



Activity ID	Activity Name	October 2017			November 2017				December 2017				January 2018				February 2018		
		15	22	29	05	12	19	26	03	10	17	24	31	07	14	21	28	04	11
C8 - 3 Month Rolling Programme, 01 Dec-17 Stated																			
PROGRAMME SUMMARY																			
Fire Service Inspection Schedule Summary																			
GENERAL/PRELIMINARIES																			
DESIGN AND ENGINEERING																			
PROCUREMENT, MANUFACTURING & DELIVERIES																			
CONSTRUCTION																			
Building 021 - C&ED Dangerous Goods Store																			
Raft																			
Structure																			
ABWF/E&M																			
Internal Finishes																			
Degree 1																			
Degree 2																			
RAB-21-0450	021 - Louver & Door Frame																		
RAB-21-0410	021 - Power On																		
Degree 3																			
RAB-21-0330	021 - MEP Final Fix																		
RAB-21-0430	021 - Door Panel & Ironmongery																		
RAB-21-0460	021 - Floor Painting																		
RAB-21-0340	021 - Snagging and Remedials (Bldg. Internal)																		
RAB-21-0520	021 - MEP Balance of Works																		
RAB-21-0345	KD4C - Projected achievement of Stage 4C of the Works																		
RAB-KD4C10	021 - End Users and MoM handover inspection																		
Roof Finishes																			
RAB-21-0270	021 - Install Railing 50m																		
External Finishes																			
Facade																			
RAB-21-0190	021 - Install External Louvers /Windows/Doors																		
At Grade																			
RAB-21-380	021 - Prepare Sub Grade																		
RAB-21-390	021 - Lay Granular Sub-Base																		
RAB-21-360	021 - Concrete Block Paving																		
Utilities and Drainage																			
Testing & Commissioning																			
RAB-TC21-1000	021 - T&C (HVAC, FS, P&D, OTHERS)																		
Statutory Submissions & Approvals (Day 670 Completion)																			
Dangerous Goods Licence																			
RAB-21-0350	021 - DG Licence Iprocessing & Inspection																		
RAB-21-0360	021 - Issue DG Licence																		
Fire Services Department (VAC)																			
RAB-FSD-810	021 - Submit Form 314 to FSD																		
RAB-FSD-820	021 - Submit Form 501 to FSD																		
RAB-FSD-300	021 - FSD Inspection Period																		
RAB-FSD-310	021 - Fire Certificate Obtained (Form 172) Handover																		
Engineer (AECOM)																			
RAB-21-2190	021 - Submit As-Built Drawings to the Engineer																		
Building 022 - Customs Detective Dog Base Building																			
Excavation																			
Raft Foundations																			

█ Remaining Level of Effort
 █ Actual Work
 █ Critical Re...
█ Actual Level of Effort
 █ Remaining Work
 ◁ Finish Con...

3-Month Rolling Programme, Stated 01 Dec-17 Page 1 of 21

Date	Revision	Checked	Approved
01-Dec-17	3-Month Rolling Programme Stated 01 D...	SGJ	

Activity ID	Activity Name	October 2017			November 2017				December 2017				January 2018				February 2018		
		15	22	29	05	12	19	26	03	10	17	24	31	07	14	21	28	04	11
Structure																			
Walls & Columns																			
Roof Slab																			
North Structure																			
Cure and Strip																			
Middle Structure																			
Cure and Strip																			
South Structure																			
Cure and Strip																			
ABWF/E&M																			
Internal Finishes																			
North																			
Degree 1																			
RAB-22-8665	022 - Screeding																		
Degree 2																			
RAB-22-0885	022 - Door/Window Frame & Louvers																		
RAB-22-0910	022 - Power On																		
Degree 3																			
RAB-22-0865	022 - Ceiling Frame & Board Panel																		
RAB-22-8395	022 - Wall Tiling & Painting																		
RAB-22-8275	022 - MEP Final Fix																		
RAB-22-8365	022 - Floor Finish Other Than Early Handovr Rooms																		
RAB-22-8245	022 - Glazing																		
RAB-22-8265	022 - Door Panel & Ironmongery																		
RAB-22-0870	022 - MEP Balance of Works																		
RAB-22-8295	022 - Snagging and Remedials (Bldg. Internal)																		
RAB-22-0980	022 - End Users and MOM Handover Inspection																		
RAB-22-0950	022 - ABWF and MEP works to Degree 3 (KD5C)																		
External Finishes																			
Facade																			
RAB-22-0470	022 - External Painting, Tiling & Cladding																		
RAB-22-0710	Snag Listing - Bldg. External & External Works																		
At Grade																			
RAB-22-2120	022 - Lay Granular Sub-Base																		
RAB-22-2100	022 - Prepare Sub Grade																		
RAB-22-2140	022 - Concrete Block Paving																		
Roof Finishes - North																			
RAB-22-0540	022 - Install Cat Ladder and Roof Hatch																		
RAB-22-0530	022 - Install Railing																		
RAB-22-0720	022 - Make good external surfaces																		
Specialist Installations																			
RAB-22-0990	022 - Kennels Installation (42No)																		
Window Wall																			
RAB-22-7030	022 - Install Primary Steelwork for Window Wall																		
RAB-22-7040	022 - Install Secondary Steelwork for Window Wall																		
RAB-22-7050	022 - Glazing to Window Wall																		
Dog Swimming Pool																			
RAB-22-0480	022 - Waterproofing																		
RAB-22-0600	022 - Tiling to Dog Swimming Pool																		
RAB-22-0490	022 - Backfill to ground level at Dog Swimming Pool																		
RAB-22-0640	022 - Plumbing and filtration systems																		
Utilities and Drainage																			
RAB-22-8095	022 - Construct Permanent Drainage and Manholes																		
RAB-22-8125	022 - Utilites and Common Telecom Ducting																		

█ Remaining Level of Effort
█ Actual Work
█ Critical Re...
█ Actual Level of Effort
█ Remaining Work
△ Finish Con...

Date	Revision	Checked	Approved
01-Dec-17	3-Month Rolling Programme Stated 01 D...	SGJ	

Activity ID	Activity Name	October 2017			November 2017				December 2017				January 2018				February 2018	
		15	22	29	05	12	19	26	03	10	17	24	31	07	14	21	28	04
RAB-22-8115	022 - Install Flushing Water Mains	[Gantt bar: Oct 15 - Oct 22]																
RAB-22-8105	022 - Install Fresh Water Mains	[Gantt bar: Oct 15 - Oct 22]																
RAB-22-8135	022 - Install FS Water main	[Gantt bar: Oct 15 - Oct 22]																
Testing & Commissioning																		
RAB-TC22-1000	022 - T&C (HVAC, FS, P&D, OTHERS)	[Gantt bar: Nov 26 - Nov 26]																
Statutory Submissions & Approvals (Day 670 Completion)																		
BBEO																		
RAB-BEE-120	022 - Registered Energy Assessor Inspection & Certification	[Gantt bar: Dec 03 - Dec 03]																
RAB-BEE-130	022 - Submit REA Certification to EDMS	[Gantt bar: Dec 10 - Dec 10]																
RAB-BEE-140	022 - EDMS Issue of Cert of Compliance Registration (COCR)	[Gantt bar: Dec 17 - Dec 17]																
Water Supplies Department (WSD)																		
Commencement																		
Completion																		
RAB-WSD-804	022 - Submit WWO 46 Pt. IV	[Gantt bar: Dec 24 - Dec 24]																
RAB-WSD-254	022 - WSD's Processing/Inspection/Meter Connection	[Gantt bar: Dec 31 - Dec 31]																
RAB-WSD-264	022 - Permanent Water ON/WSD Issue WWO 46 Part V Cert & Wa	[Gantt bar: Jan 07 - Jan 07]																
Fire Services Department (VAC)																		
RAB-FSD-860	022 - Submit Form 501	[Gantt bar: Nov 12 - Nov 12]																
Fire Services Water (FS)																		
RAB-FSD-320	022 - Submit Form 501, FS	[Gantt bar: Dec 10 - Dec 10]																
RAB-FSD-330	022 - FSD Inspection Period, FS	[Gantt bar: Dec 17 - Dec 17]																
RAB-FSD-590	022 - Issuance of FS 172, FS Certificate of Compliance, FS	[Gantt bar: Dec 24 - Dec 24]																
Engineer (AECOM)																		
RAB-22-2220	022 - Submit Building 022 As Built Drawings to Engineer	[Gantt bar: Dec 24 - Dec 24]																
Building 023 - C&ED Outbound Cargo Examination Building and Examination Pla																		
Excavation																		
Raft Foundations - Inspection Platform																		
Raft Foundations - Main Building																		
Structure																		
Ground Floor																		
Planters																		
RAB-23-6140	023 - Construct North Planter Box and Ramp	[Gantt bar: Dec 24 - Dec 24]																
RAB-23-6230	023 - Construct South Planter Box and Ramp	[Gantt bar: Dec 24 - Dec 24]																
Supporting Walls and Columns to +12.85mPD																		
First Floor																		
Cure and Strip																		
Supporting Walls and Columns to +17.1mPD																		
Roof																		
Cure and Strip																		
Supporting Walls and Columns to +19.1mPD																		
Lift Doghouse																		
Cure and Strip																		
ABWF/E&M																		
Internal Finishes																		
Ground Floor																		
Degree 1																		
Degree 2																		
RAB-23-5860	023 - MEP 2nd Fix, G/F	[Gantt bar: Dec 24 - Dec 24]																
RAB-23-5610	023 - Frame for Wall Panel & Cladding + Louver, G/F	[Gantt bar: Dec 24 - Dec 24]																
RAB-23-5670	023 - Access to C3, C6 & C7 For Equip. Installation***, G/F	[Gantt bar: Dec 24 - Dec 24]																
RAB-23-5790	023 - ABWF and MEP works to Degree 2 for others (KD3B) G/F	[Gantt bar: Dec 24 - Dec 24]																
Degree 3																		
RAB-23-5930	023 - Wall Finish - Paint & Tile, G/F	[Gantt bar: Dec 24 - Dec 24]																
RAB-23-6220	023 - Floor Finish Other Than Carpet, G/F	[Gantt bar: Dec 24 - Dec 24]																
RAB-23-5760	023 - Ceiling Frame, G/F	[Gantt bar: Dec 24 - Dec 24]																

█ Remaining Level of Effort
█ Actual Work
█ Critical Re...
█ Actual Level of Effort
█ Remaining Work
△ Finish Con...

Date	Revision	Checked	Approved
01-Dec-17	3-Month Rolling Programme Stated 01 D...	SGJ	

Activity ID	Activity Name	October 2017		November 2017				December 2017				January 2018				February 2018			
		15	22	29	05	12	19	26	03	10	17	24	31	07	14	21	28	04	11
RAB-23-6380	023 - MEP Final Fix, G/F	[Actual Work]		[Actual Work]				[Actual Work]				[Actual Work]				[Actual Work]			
RAB-23-5660	023 - Door Frame/Panel & Ironmongery, G/F	[Actual Work]		[Actual Work]				[Actual Work]				[Actual Work]				[Actual Work]			
RAB-23-6080	023 - Glazing, G/F	[Actual Work]		[Actual Work]				[Actual Work]				[Actual Work]				[Actual Work]			
RAB-23-6410	023 - Ceiling Plaster Board, G/F	[Actual Work]		[Actual Work]				[Actual Work]				[Actual Work]				[Actual Work]			
RAB-23-6180	023 - Floor Carpet Finish, G/F	[Actual Work]		[Actual Work]				[Actual Work]				[Actual Work]				[Actual Work]			
RAB-23-6190	023 - Access to End Users, KD3C' - C3, C6 & C7	[Actual Work]		[Actual Work]				[Actual Work]				[Actual Work]				[Actual Work]			
First Floor																			
Degree 1																			
RAB-23-8065	023 - Plastering & Undercoat, 1/F	[Actual Work]		[Actual Work]				[Actual Work]				[Actual Work]				[Actual Work]			
Degree 2																			
RAB-23-8125	023 - MEP 2nd Fix, 1/F	[Actual Work]		[Actual Work]				[Actual Work]				[Actual Work]				[Actual Work]			
RAB-23-8085	023 - Frame for Wall Panel & Cladding + Louver, 1/F	[Actual Work]		[Actual Work]				[Actual Work]				[Actual Work]				[Actual Work]			
RAB-23-8235	023 - Power On	[Actual Work]		[Actual Work]				[Actual Work]				[Actual Work]				[Actual Work]			
RAB-23-8115	023 - Access for C3 for Equip. Instln***, 1/F, KD3D Target to Achieve	[Actual Work]		[Actual Work]				[Actual Work]				[Actual Work]				[Actual Work]			
Degree 3																			
RAB-23-8175	023 - Wall Finish - Paint & Tile, 1/F	[Actual Work]		[Actual Work]				[Actual Work]				[Actual Work]				[Actual Work]			
RAB-23-8105	023 - Ceiling Frame, 1/F	[Actual Work]		[Actual Work]				[Actual Work]				[Actual Work]				[Actual Work]			
RAB-23-8165	023 - MEP Final Fix, 1/F	[Actual Work]		[Actual Work]				[Actual Work]				[Actual Work]				[Actual Work]			
RAB-23-8205	023 - Floor Finish Other Than Carpet, 1/F	[Actual Work]		[Actual Work]				[Actual Work]				[Actual Work]				[Actual Work]			
RAB-23-8145	023 - Glazing, 1/F	[Actual Work]		[Actual Work]				[Actual Work]				[Actual Work]				[Actual Work]			
RAB-23-8155	023 - Door Panel/Ironmongery & Glass Baluster, 1/F	[Actual Work]		[Actual Work]				[Actual Work]				[Actual Work]				[Actual Work]			
RAB-23-8185	023 - Ceiling Plaster Board, 1/F	[Actual Work]		[Actual Work]				[Actual Work]				[Actual Work]				[Actual Work]			
RAB-23-8195	023 - Floor Carpet Finish, 1/F	[Actual Work]		[Actual Work]				[Actual Work]				[Actual Work]				[Actual Work]			
RAB-23-8265	023 - MEP Balance of Works	[Actual Work]		[Actual Work]				[Actual Work]				[Actual Work]				[Actual Work]			
RAB-23-2290	023 - Snag Listing & Remedial Works - Building Internal	[Actual Work]		[Actual Work]				[Actual Work]				[Actual Work]				[Actual Work]			
RAB-23-8225	023 - Handover Rooms Ready to End Users***, KD3C Target to Ach	[Actual Work]		[Actual Work]				[Actual Work]				[Actual Work]				[Actual Work]			
RAB-23-8255	023 - ABWF and MEP works to Degree 3 - Remaining Area- 1/F	[Actual Work]		[Actual Work]				[Actual Work]				[Actual Work]				[Actual Work]			
RAB-23-6040	023 - End Users and MOM Handover Inspection	[Actual Work]		[Actual Work]				[Actual Work]				[Actual Work]				[Actual Work]			
RAB-23-5970	023 - ABWF and MEP works to Degree 3 (KD3E)	[Actual Work]		[Actual Work]				[Actual Work]				[Actual Work]				[Actual Work]			
Roof Level Dog House																			
RAB-23-6280	023 - ABWF and MEP works to Degree 2 R/F	[Actual Work]		[Actual Work]				[Actual Work]				[Actual Work]				[Actual Work]			
RAB-23-6340	023 - ABWF and MEP works to Degree 3 R/F	[Actual Work]		[Actual Work]				[Actual Work]				[Actual Work]				[Actual Work]			
External Finishes																			
Facade																			
RAB-23-5650	023 - External Painting	[Actual Work]		[Actual Work]				[Actual Work]				[Actual Work]				[Actual Work]			
RAB-23-5990	023 - Dismantle Scaffolding	[Actual Work]		[Actual Work]				[Actual Work]				[Actual Work]				[Actual Work]			
At Grade																			
RAB-23-5740	023 - Prepare Sub Grade	[Actual Work]		[Actual Work]				[Actual Work]				[Actual Work]				[Actual Work]			
RAB-23-5820	023 - Laying Geo Textile	[Actual Work]		[Actual Work]				[Actual Work]				[Actual Work]				[Actual Work]			
RAB-23-5910	023 - Lay Granular Sub-Base	[Actual Work]		[Actual Work]				[Actual Work]				[Actual Work]				[Actual Work]			
RAB-23-5940	023 - Laying Course	[Actual Work]		[Actual Work]				[Actual Work]				[Actual Work]				[Actual Work]			
RAB-23-6050	023 - Concrete Block Paving	[Actual Work]		[Actual Work]				[Actual Work]				[Actual Work]				[Actual Work]			
Curtain Wall																			
East																			
RAB-23-6810	023 - Install Primary Steelwork for Curtain Wall (Bracket Support) - I	[Actual Work]		[Actual Work]				[Actual Work]				[Actual Work]				[Actual Work]			
RAB-23-6820	023 - Install Secondary Steelwork for Curtain Wall (Mullion, etc) - E	[Actual Work]		[Actual Work]				[Actual Work]				[Actual Work]				[Actual Work]			
RAB-23-6830	023 - Glazing to Window Wall - E	[Actual Work]		[Actual Work]				[Actual Work]				[Actual Work]				[Actual Work]			
West																			
RAB-23-6840	023 - Install Primary Steelwork for Window Wall (Bracket Support) - W	[Actual Work]		[Actual Work]				[Actual Work]				[Actual Work]				[Actual Work]			
RAB-23-6850	023 - Install Secondary Steelwork for Window Wall (Mullion, etc) - W	[Actual Work]		[Actual Work]				[Actual Work]				[Actual Work]				[Actual Work]			
RAB-23-6860	023 - Glazing to Window Wall - W	[Actual Work]		[Actual Work]				[Actual Work]				[Actual Work]				[Actual Work]			
Roof Finishes																			
RAB-23-5620	023 - Top Screed	[Actual Work]		[Actual Work]				[Actual Work]				[Actual Work]				[Actual Work]			

█ Remaining Level of Effort
█ Actual Work
█ Critical Re...
█ Actual Level of Effort
█ Remaining Work
△ Finish Con...

Date	Revision	Checked	Approved
01-Dec-17	3-Month Rolling Programme Stated 01 D...	SGJ	

Activity ID	Activity Name	October 2017			November 2017				December 2017				January 2018				February 2018		
		15	22	29	05	12	19	26	03	10	17	24	31	07	14	21	28	04	11
RAB-23-5640	023 - Roof Tiling	[Gantt bar: Oct 15 - Dec 3]																	
RAB-23-5920	023 - Install Railing	[Gantt bar: Oct 15 - Dec 3]																	
Green Roof																			
RAB-23-5720	023 - Install green Roof Irrigation Systems	[Gantt bar: Oct 15 - Nov 12]																	
RAB-23-5900	023 - Complete Green Roofing Works	[Gantt bar: Nov 12 - Dec 3]																	
Specialist Installations																			
RAB-23-6270	023 - Install Lift (1 nos)																		
RAB-23-7310	023 - Install Glazed Entrance Canopy (Sky Light)																		
RAB-23-6010	023 - Installation of Roller Shutter Header Boxes (x 3)	[Gantt bar: Oct 15 - Nov 12]																	
RAB-23-6250	023 - Installation of Roller Shutter Curtain (x3)	[Gantt bar: Nov 12 - Dec 3]																	
PV Installation																			
RAB-23-6350	023 - Install Supporting Frame and PV panel	[Gantt bar: Oct 22 - Nov 12]																	
RAB-23-6360	023 - Cable containment and grid cable wiring	[Gantt bar: Nov 12 - Dec 3]																	
RAB-23-6390	023 - Sub-array junction box installation & Connection	[Gantt bar: Dec 3 - Dec 10]																	
RAB-23-6400	023 - DC cable wiring from PV panel to EL room	[Gantt bar: Dec 10 - Dec 17]																	
Steel Canopy																			
RAB-23-6240	023 - Install Secondary Steelwork																		
RAB-23-6290	023 - Install Metal Cladding Panels																		
RAB-23-6310	023 - Install Misc Metalworks	[Gantt bar: Dec 3 - Dec 24]																	
Utilities and Drainage																			
RAB-23-7975	023 - Construct Permanent Drainage, Manholes & Draw Pits	[Gantt bar: Oct 15 - Dec 3]																	
RAB-23-7985	023 - Utilities and Common Telecom Ducting	[Gantt bar: Oct 15 - Dec 3]																	
RAB-23-7995	023 - Install Flushing Water Mains	[Gantt bar: Oct 15 - Nov 12]																	
RAB-23-8005	023 - Install Fresh Water Mains	[Gantt bar: Oct 15 - Nov 12]																	
RAB-23-8015	023 - Install FS Water Mains	[Gantt bar: Oct 15 - Nov 12]																	
Testing & Commissioning																			
RAB-TC23-1000	023 - T&C (HVAC, FS, P&D, OTHERS)	[Gantt bar: Nov 12 - Dec 3]																	
RAB-TC23-1010	023 - T&C (Lift)	[Gantt bar: Nov 19 - Nov 19]																	
RAB-TC23-1015	023 - PV Self-test with Engineer	[Gantt bar: Dec 24 - Dec 24]																	
Statutory Submissions & Approvals (Day 610 Completion)																			
BBEO																			
RAB-BEE-150	023 - Registered Energy Assessor Inspection & Certification	[Gantt bar: Dec 3 - Dec 3]																	
RAB-BEE-160	023 - Submit REA Certification to EDMS	[Gantt bar: Dec 10 - Dec 10]																	
RAB-BEE-170	023 - EDMS Issue of Cert of Compliance Registration (COCR)	[Gantt bar: Dec 10 - Dec 31]																	
EMSD - Building 023 Lift Inspection																			
RAB-FSD-180	023 - Submit EMSD Form 5 (Completion of Lift Installation)	[Milestone: Nov 12]																	
RAB-FSD-190	023 - EMSD Lift Inspection	[Gantt bar: Dec 3 - Dec 24]																	
RAB-FSD-106	023 - EMSD Lift Certificate Issued - Building 023	[Milestone: Dec 24]																	
Water Supplies Department (WSD)																			
Commencement																			
Completion																			
RAB-WSD-774	023 - Submit WWO 46 Pt. IV for Building 023	[Milestone: Dec 3]																	
RAB-WSD-107	023 - WSD Inspection/Meter Connection	[Gantt bar: Dec 3 - Dec 24]																	
RAB-WSD-109	023 - Permanent Water ON/WSD Issue WWO 46 Part V - Water C	[Milestone: Dec 24]																	
Fire Services Department (VAC)																			
RAB-FSD-900	023 - Submit Form 501	[Milestone: Nov 19]																	
RAB-FSD-110	023 - FSD Inspection Period For Building 023	[Gantt bar: Dec 10 - Dec 17]																	
RAB-FSD-290	023 - Issuance of FS 172, FS Certificate of Compliance	[Milestone: Dec 17]																	
Engineer (AECOM)																			
RAB-23-2250	023 - Submit Building 023 As Built Drawings to Engineer	[Milestone: Dec 10]																	
Building 025 - Inbound Private Car Annexure																			
Excavation																			
Raft Foundations																			
Structure																			

■ Remaining Level of Effort
■ Actual Work
■ Critical Re...
■ Actual Level of Effort
■ Remaining Work
◆ Finish Con...

Date	Revision	Checked	Approved
01-Dec-17	3-Month Rolling Programme Stated 01 D...	SGJ	

Activity ID	Activity Name	October 2017			November 2017				December 2017				January 2018				February 2018		
		15	22	29	05	12	19	26	03	10	17	24	31	07	14	21	28	04	11
Walls & Columns																			
Roof Slab																			
Cure and Strip																			
ABWF/E&M INTERNAL FINISHES																			
INTERNAL FINISHING WORKS																			
Degree 1																			
Degree 2																			
RAB-25-7430	025 - MEP 2nd Fix																		
RAB-25-7570	025 - Raised Floor Pedestal																		
RAB-25-7450	025 - Frame for Doors/Windows, Wall Panel & Cladding																		
RAB-25-7350	025 - Power On Available																		
RAB-25-7560	025 - Access C3, C6 & C7 Equip. Installation***																		
Degree 3																			
RAB-25-7470	025 - Ceiling Painting & Ceiling Sub-Frame																		
RAB-25-7620	025 - Ceiling Panel																		
RAB-25-7600	025 - Wall Paint Finish Coat																		
RAB-25-7610	025 - Wall Tiling																		
RAB-25-7480	025 - Floor Tiling																		
RAB-25-7460	025 - MEP Final Fix																		
RAB-25-7440	025 - Door Frame/Panel																		
RAB-25-7580	025 - Floor Painting																		
RAB-25-7590	025 - Floor Carpet																		
RAB-25-7510	025 - Plaster Board																		
RAB-25-7520	025 - Glazing																		
RAB-25-7550	025 - MEP Balance of Works																		
RAB-25-7370	025 - Snagging and Remedials																		
RAB-25-7375	KD6C - Projected achievement of Stage 6C of the Works																		
RAB-KD6C10	025 - End Users and MoM handover inspection																		
RAB-25-7630	025 - Early Handover Rooms Ready to End Users***, Target to Achieve																		
External Finishes																			
Facade																			
RAB-25-0360	025 - Install External Louvers /Windows/Doors																		
RAB-25-0580	025 - Make good external surfaces																		
At Grade																			
RAB-25-6400	025 - Prepare Sub Grade																		
RAB-25-6390	025 - Laying Geo Textile																		
RAB-25-6410	025 - Lay Granular Sub-Base																		
RAB-25-6420	025 - Laying Course																		
RAB-25-6380	025 - Concrete Block Paving																		
RAB-25-0600	025 - Snagging and Remedials																		
Roof Finishes																			
RAB-25-0540	025 - Install Cat Ladders and Roof Hatch																		
RAB-25-0550	025 - Install Railing (222m)																		
Green Roof																			
RAB-25-0700	025 - Install Green Roof Irrigation Systems																		
RAB-25-0710	025 - Complete Green Roof Works																		
Specialist Installations																			
RAB-25-620	025 - Construct Health Department Screening Station x 1																		
RAB-25-610	025 - Construct Immigration Counters x 3																		
Glazed Canopy																			
RAB-25-0520	025 - Install Glazed Panels																		
IMMD Kiosk																			
RAB-25-0380	025 - Internal ABWF and MEP of IMMD Kiosk																		
RAB-25-0350	025 - External Finishes to IMMD Kiosk																		

■ Remaining Level of Effort
■ Actual Work
■ Critical Re...
■ Actual Level of Effort
■ Remaining Work
△ Finish Con...

Date	Revision	Checked	Approved
01-Dec-17	3-Month Rolling Programme Stated 01 D...	SGJ	

Activity ID	Activity Name	October 2017			November 2017				December 2017				January 2018				February 2018		
		15	22	29	05	12	19	26	03	10	17	24	31	07	14	21	28	04	11
RAB-25-0430	025 - Erect Kiosk Canopy @ +10.17mPD																		
Utilities and Drainage																			
RAB-25-7250	025 - Construct Permanent Drainage, Manholes & Draw Pits																		
RAB-25-7260	025 - Utilites and Common Telecom Ducting																		
RAB-25-7270	025 - Install Flushing Water Mains																		
RAB-25-7280	025 - Install Fresh Water Mains																		
RAB-25-7290	025 - Install FS Water Main																		
Testing & Commissioning																			
RAB-TC25-1000	025 - T&C (HVAC, FS, P&D, OTHERS)																		
Statutory Submissions & Approvals (Day 670 Completion)																			
BBEO																			
RAB-BEE-180	025 - Registered Energy Assessor Inspection & Certification																		
RAB-BEE-190	025 - Submit REA Certification to EDMS																		
RAB-BEE-200	025 - EDMS Issue of Cert of Compliance Registration (COCR)																		
Water Supplies Department (WSD)																			
Commencement																			
Completion																			
RAB-WSD-744	025 - Submit WWO 46 Pt. IV																		
RAB-WSD-374	025 - WSD Inspection/Meter Connection																		
RAB-WSD-384	025 - WSD Issue Water Certificate WWO 46 Part V																		
Fire Servives Department (VAC)																			
RAB-FSD-940	025 - Submit Form 501, VAC																		
Fire Service Water (FS)																			
RAB-FSD-730	025 - Submit Form 501, FS																		
RAB-FSD-790	025 - Submit Form 314, FS																		
RAB-FSD-360	025 - FSD Inspection Period, FS																		
Engineer (AECOM)																			
RAB-25-7220	025 - Submit Building 025 As Built Drawings to Engineer																		
Building 032 - Outbound Private Car Annexure																			
Excavation																			
Raft Foundations																			
Structure																			
Walls & Columns																			
Roof Slab																			
Cure and Strip																			
ABWF/E&M																			
Internal Finishes																			
Degree 1																			
RAB-32-0700	032 - Floor Screed																		
RAB-32-0510	032 - MEP 1st Fix																		
Degree 2																			
RAB-32-0560	032 - MEP 2nd Fix																		
RAB-32-0760	032 - Door & Windor Frame + Louver																		
RAB-32-0660	032 - Power On																		
Degree 3																			
RAB-32-0830	032 - Wall Painting																		
RAB-32-0750	032 - Ceiling Frame & Ceiling Paint																		
RAB-32-0745	032 - Raised Floor																		
RAB-32-0880	032 - Wall Tiling																		
RAB-32-0870	032 - Ceiling Panel																		
RAB-32-0860	032 - Floor Painting & Remaining Floor Tiling																		
RAB-32-0590	032 - MEP Final Fix																		
RAB-32-0800	032 - Door Panel & Ironmongery																		
RAB-32-0790	032 - Glazing																		

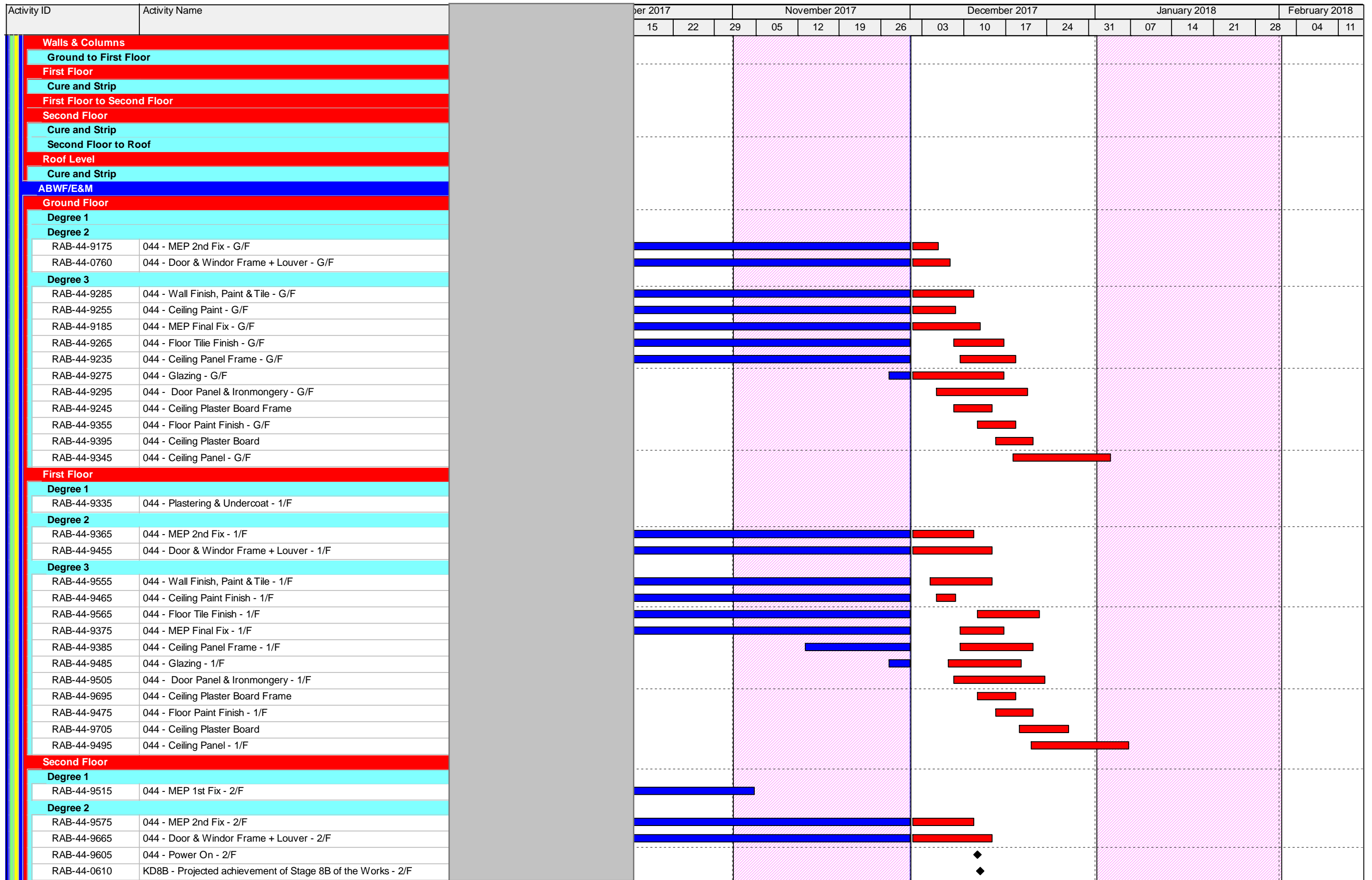
█ Remaining Level of Effort
█ Actual Work
█ Critical Re...
█ Actual Level of Effort
█ Remaining Work
◆ Finish Con...

Date	Revision	Checked	Approved
01-Dec-17	3-Month Rolling Programme Stated 01 D...	SGJ	

Activity ID	Activity Name	October 2017			November 2017				December 2017				January 2018				February 2018		
		15	22	29	05	12	19	26	03	10	17	24	31	07	14	21	28	04	11
RAB-32-0850	032 - Early Handover Rooms Ready to End Users***																		
RAB-32-0680	32 - Snagging and Remedials																		
RAB-32-0740	032 - MEP Balance of Work																		
RAB-32-0670	032 - End Users and MoM handover inspection																		
RAB-KD7C10	KD7C - Projected achievement of Stage 7C of the Works																		
Roof Finishes																			
RAB-32-0540	032 - Install Cat Ladders and Roof Hatch																		
RAB-32-0550	032 - Install Railing																		
Green Roof																			
RAB-32-0620	032 - Install Green Roof Irrigation Systems																		
RAB-32-0650	032 - Complete Green Roof Works																		
External Finishes																			
Facade																			
RAB-32-0360	032 - Install External Louvers /Windows/Doors																		
RAB-32-0570	032 - Dismantle Scaffolding																		
RAB-32-0580	032 - Make good external surfaces																		
At Grade																			
RAB-32-6460	032 - Prepare Sub Grade																		
RAB-32-6450	032 - Laying Geo Textile																		
RAB-32-6470	032 - Lay Granular Sub-Base																		
RAB-32-6480	032 - Laying Course																		
RAB-32-6440	032 - Concrete Block Paving																		
Specialist Installations																			
RAB-32-630	032 - Construct Immigration Counters x 3																		
RAB-32-640	032 - Construct Health Department Screening Station X 1																		
IMMD Kiosk																			
RAB-32-0380	032 - Internal ABWF and MEP of IMMD Kiosk																		
RAB-32-0350	032 - External Finishes to IMMD Kiosk																		
RAB-32-0430	032 - Erect Kiosk Canopy @ +10.17mPD																		
Glazed Canopy																			
Utilities and Drainage																			
RAB-32-7290	032 - Construct Permanent Drainage and Manholes (Approx 150m)																		
RAB-32-7300	032 - Utilites and Common Telecom Ducting																		
RAB-32-7310	032 - Install Flushing Water Mains																		
RAB-32-7320	032 - Install Fresh Water Mains																		
RAB-32-7330	032 - Install FS Water Main																		
Testing & Commissioning																			
RAB-TC32-1000	032 - T&C (HVAC, FS, P&D, OTHERS)																		
Statutory Submissions & Approvals (Day 670 Completion)																			
BBEO																			
Water Supplies Department (WSD)																			
Commencement																			
Completion																			
RAB-WSD-714	032 - Submit WWO 46 Pt. IV																		
RAB-WSD-354	032 - WSD Issue WWO 46 Part V - Completion Cert of Plumbing & I																		
RAB-WSD-344	032 - WSD Inspection/Meter Connection																		
Fire Services Department (HVAC)																			
Fire Water Service (FS)																			
Engineer (AECOM)																			
RAB-32-7250	032 - Submit Building 032 As Built Drawings to Engineer																		
Building 044 - E&M Maintenance Building																			
Excavation																			
Raft																			
Structure																			

█ Remaining Level of Effort
█ Actual Work
█ Critical Re...
█ Actual Level of Effort
█ Remaining Work
◊ Finish Con...

Date	Revision	Checked	Approved
01-Dec-17	3-Month Rolling Programme Stated 01 D...	SGJ	



■ Remaining Level of Effort
■ Actual Work
■ Critical Re...
■ Actual Level of Effort
■ Remaining Work
△ Finish Con...

Date	Revision	Checked	Approved
01-Dec-17	3-Month Rolling Programme Stated 01 D...	SGJ	

Activity ID	Activity Name	October 2017			November 2017				December 2017				January 2018				February 2018		
		15	22	29	05	12	19	26	03	10	17	24	31	07	14	21	28	04	11
Degree 3																			
RAB-44-9635	044 - Ceiling Paint Finish - 2/F	[Gantt bar: Oct 15-22, Nov 05-12, Dec 03-10]																	
RAB-44-9595	044 - Wall Finish, Paint & Tile - 2/F	[Gantt bar: Oct 15-22, Nov 05-12, Dec 03-10]																	
RAB-44-9585	044 - MEP Final Fix - 2/F	[Gantt bar: Nov 19-26, Dec 10-17]																	
RAB-44-9675	044 - Glazing - 2/F	[Gantt bar: Nov 26-Dec 03]																	
RAB-44-9725	044 - Ceiling Plaster Board Frame - 2/F	[Gantt bar: Dec 10-17]																	
RAB-44-9715	044 - Door Panel & Ironmongery - 2/F	[Gantt bar: Dec 17-24]																	
RAB-44-9735	044 - Ceiling Plaster Board	[Gantt bar: Dec 24-31]																	
RAB-44-9795	044 - MEP Balance of Works	[Gantt bar: Dec 24-31, Jan 07-14]																	
Roof Finishes																			
RAB-44-0520	044 - Install Roof Tiles - (242m²)	[Gantt bar: Dec 03-10]																	
RAB-44-0550	044 - Install Cat Ladder and Roof Hatch	[Gantt bar: Dec 03-10]																	
RAB-44-0540	044 - Install Railing	[Gantt bar: Dec 24-31]																	
Green Roof																			
RAB-44-0350	044 - Leveling screed - (242m²)	[Gantt bar: Nov 19-26]																	
RAB-44-0360	044 - Waterproof membrane - (242m²)	[Gantt bar: Nov 19-26]																	
RAB-44-0390	044 - Top Screed - (242m²)	[Gantt bar: Nov 19-26]																	
RAB-44-0400	044 - Install Green Roof Irrigation Systems	[Gantt bar: Nov 19-26]																	
RAB-44-0500	044 - Complete Green Roofing Works	[Gantt bar: Nov 19-26]																	
External Finishes																			
Facade																			
RAB-44-0490	044 - External Tiling	[Gantt bar: Oct 15-22]																	
RAB-44-0530	044 - External Painting	[Gantt bar: Oct 15-22]																	
RAB-44-0430	044 - Install External Louvers /Windows/Doors	[Gantt bar: Dec 03-10]																	
RAB-44-0570	044 - Dismantle Scaffolding	[Gantt bar: Oct 15-22]																	
RAB-44-0590	044 - Make good external surfaces	[Gantt bar: Dec 17-24]																	
At Grade																			
RAB-44-6520	044 - Prepare Sub Grade	[Gantt bar: Dec 03-10]																	
RAB-44-6510	044 - Laying Geo Textile	[Gantt bar: Dec 10-17]																	
RAB-44-6530	044 - Lay Granular Sub-Base	[Gantt bar: Dec 17-24]																	
Specialist Installations																			
RAB-44-0600	044 - Install Lift (1 nos)	[Gantt bar: Oct 15-22]																	
RAB-44-1100	044 - Installation of Roller Shutter Header Box	[Gantt bar: Oct 15-22]																	
RAB-44-1090	044 - Installation of Roller Shutter Steel Curtain	[Gantt bar: Nov 05-12]																	
RAB-44-2250	044 - Small Glass Canopy North Elevation	[Gantt bar: Dec 03-10]																	
Curtain Wall																			
East																			
RAB-44-6880	044 - Install Primary Steelwork for Window Wall - East	[Gantt bar: Nov 19-26]																	
RAB-44-6890	044 - Install Secondary Steelwork for Window Wall - East	[Gantt bar: Dec 10-17]																	
RAB-44-6900	044 - Glazing to Window Wall - East	[Gantt bar: Dec 17-24]																	
West																			
RAB-44-6920	044 - Install Primary Steelwork for Window Wall - West	[Gantt bar: Nov 19-26]																	
RAB-44-6930	044 - Install Secondary Steelwork for Window Wall - West	[Gantt bar: Dec 10-17]																	
RAB-44-6940	044 - Glazing to Window Wall - West	[Gantt bar: Dec 17-24]																	
Utilities and Drainage																			
RAB-44-7895	044 - Construct Permanent Drainage and Manholes (Approx 100m)	[Gantt bar: Oct 15-22, Nov 05-12, Dec 03-10]																	
RAB-44-7905	044 - Utilites and Common Telecom Ducting	[Gantt bar: Oct 15-22, Nov 05-12, Dec 03-10]																	
RAB-44-7915	044 - Install Flushing Water Mains	[Gantt bar: Oct 15-22, Nov 05-12, Dec 03-10]																	
RAB-44-7925	044 - Install Fresh Water Mains	[Gantt bar: Oct 15-22, Nov 05-12, Dec 03-10]																	
RAB-44-7935	044 - Install FS Water Main	[Gantt bar: Oct 15-22, Nov 05-12, Dec 03-10]																	
Testing & Commissioning																			
RAB-TC44-1010	044 - T&C, Lift	[Gantt bar: Nov 19-26]																	
RAB-TC44-1000	044 - T&C (HVAC, FS, P&D, OTHERS)	[Gantt bar: Dec 10-17, Dec 24-31, Jan 07-14]																	

■ Remaining Level of Effort
■ Actual Work
■ Critical Re...
■ Actual Level of Effort
■ Remaining Work
△ Finish Con...

Date	Revision	Checked	Approved
01-Dec-17	3-Month Rolling Programme Stated 01 D...	SGJ	

Activity ID	Activity Name	October 2017			November 2017				December 2017				January 2018				February 2018	
		15	22	29	05	12	19	26	03	10	17	24	31	07	14	21	28	04
Statutory Submissions & Approvals																		
BBE0																		
RAB-BEE-240	044 - Registered Energy Assessor Inspection & Certification																	
RAB-BEE-250	044 - Submit REA Certification to EDMS																	
RAB-BEE-260	044 - EDMS Issue of Cert of Compliance Registration (COCR)																	
EMSD - Building 044 Lift Inspection																		
RAB-FSD-210	044 - Submit EMSD Form 5 (Completion of Lift Installation)																	
RAB-FSD-220	044 - EMSD Lift Inspection																	
Water Supplies Department (WSD)																		
Commencement																		
Completion																		
Fire Services Department (HVAC)																		
RAB-FSD-1020	044 - Submit Form 314 to FSD, HVAC																	
Fire Water Services (FS)																		
Engineer (AECOM)																		
RAB-44-7280	044 - Submit Building 044 As Built Drawings to Engineer																	
Building 045 - Highways Depot & Administration Building																		
Raft Foundation																		
Diesel Fuel Chamber																		
Structure G/F to R/F																		
G/F to 1/F Walls & Columns																		
1/F Slab																		
Cure and Strip																		
1/F to 2/F Walls & Columns																		
2/F Slab																		
Cure and Strip																		
2/f to R/F Walls & Columns																		
Roof Level Slab																		
Cure and Strip																		
ABWF/E&M																		
Ground Floor, South - G/F																		
Degree 1, G/F																		
Degree 2, G/F																		
RAB-45-9805	045 - MEP 2nd Fix - G/F																	
RAB-45-9895	045 - Door & Windor Frame + Louver - G/F																	
RAB-45-9905	045 - Access for C3 to Install Equipment																	
RAB-45-10075	045 - Projeted achievement of Stage 8B of the Works - G/F																	
Degree 3, G/F																		
RAB-45-9935	045 - Wall Finish, Paint & Tile - G/F																	
RAB-45-9915	045 - Floor Finish (Paint & Tile) - G/F																	
RAB-45-10035	045 - Ceiling Plaster Board Frame & Ceiling Panel Frame - G/F																	
RAB-45-9815	045 - MEP Final Fix - G/F																	
RAB-45-9925	045 - Glazing - G/F																	
RAB-45-9945	045 - Door Panel & Ironmongery - G/F																	
RAB-45-10055	045 - Ceiling Plaster Board & Ceiling Panel- G/F																	
First Floor, 1/F																		
Degree 1, 1/F																		
Degree 2, 1/F																		
RAB-45-10015	045 - MEP 2nd Fix - 1/F																	
RAB-45-10105	045 - Door & Windor Frame + Louver - 1/F																	
RAB-45-10065	045 - Access to C3 Equipment Instalaltion***																	
Degree 3, 1/F																		
RAB-45-10145	045 - Wall Finish, Paint & Tile - 1/F																	
RAB-45-10125	045 - Floor Finish (Paint & Tile) - 1/F																	
RAB-45-10205	045 - Ceiling Plaster Board Frame Ceiling Panel Frame- 1/F																	

■ Remaining Level of Effort
■ Actual Work
■ Critical Re...
■ Actual Level of Effort
■ Remaining Work
△ Finish Con...

Date	Revision	Checked	Approved
01-Dec-17	3-Month Rolling Programme Stated 01 D...	SGJ	

Activity ID	Activity Name	October 2017			November 2017				December 2017				January 2018				February 2018		
		15	22	29	05	12	19	26	03	10	17	24	31	07	14	21	28	04	11
RAB-45-10025	045 - MEP Final Fix - 1/F																		
RAB-45-10155	045 - Door Panel & Ironmongery - 1/F																		
RAB-45-10285	045 - Glazing - 1/F																		
RAB-45-10245	045 - Ceiling Plaster Board & Ceiling Panel - 1/F																		
RAB-45-10275	045 - Handover to End users***																		
Second Floor, 2/F																			
Degree 1, 2/F																			
RAB-45-10195	045 - Plastering & Undercoat - 2/F																		
RAB-45-10185	045 - Screed - 2/F																		
RAB-45-10165	045 - MEP 1st Fix - 2/F																		
Degree 2, 2/F																			
RAB-45-10225	045 - MEP 2nd Fix - 2/F																		
RAB-45-10315	045 - Door & Window Frame + Louver - 2/F																		
RAB-45-10295	045 - Access for C3 Equip. Installation, 2/F***																		
RAB-45-0950	KD8B - Projected achievement of Stage 8B of the Works - 2/F, 045																		
RAB-45-10255	045 - Power On - 2/F																		
Degree 3, 2/F																			
RAB-45-10355	045 - Wall Finish, Paint & Tile - 2/F																		
RAB-45-10235	045 - MEP Final Fix - 2/F																		
RAB-45-10345	045 - Glazing - 2/F																		
RAB-45-10375	045 - Ceiling Plaster Board Frame & Ceiling Panel Frame - 2/F																		
RAB-45-10335	045 - Floor Finish (Paint & Tile) - 2/F																		
RAB-45-10365	045 - Door Panel & Ironmongery - 2/F																		
RAB-45-10385	045 - Ceiling Plaster Board & Ceiling Panel - 2/F																		
RAB-45-0980	045 - Snagging and Remedials - 2/F																		
RAB-45-10305	045 - MEP Balance of Works																		
RAB-45-10265	045 - End Users and MoM handover inspection																		
RAB-45-0970	KD8C - Projected achievement of Stage 8C of the Works - 2/F, 045																		
External Finishes																			
Bldg. External Finishes																			
Facade																			
RAB-45-0710	045 - External Tiling																		
RAB-45-0620	045 - Install External Louvers /Windows/Doors																		
RAB-45-0690	045 - External Painting																		
RAB-45-0720	045 - Dismantle Scaffolding																		
RAB-45-0760	045 - Make good external surfaces																		
At Grade																			
RAB-45-6580	045 - Prepare Sub Grade																		
RAB-45-6570	045 - Laying Geo Textile																		
RAB-45-6590	045 - Lay Granular Sub-Base																		
RAB-45-6600	045 - Laying Course																		
Roof Finishes -																			
RAB-45-0910	045 - Install Roof Tiles																		
RAB-45-0930	045 - Install Cat Ladder and Roof Hatch																		
RAB-45-0920	045 - Install Railing																		
Green Roof - Noth Side, 2/F Level																			
RAB-45-0600	045 - Leveling screed																		
RAB-45-0650	045 - Waterproof membrane																		
RAB-45-0670	045 - Top Screed																		
RAB-45-0680	045 - Install green Roof Irrigation Systems																		
RAB-45-0740	045 - Complete Green Roofing Works																		
Specialist Installations																			
RAB-45-0590	045 - Install Lift (1 nos)																		

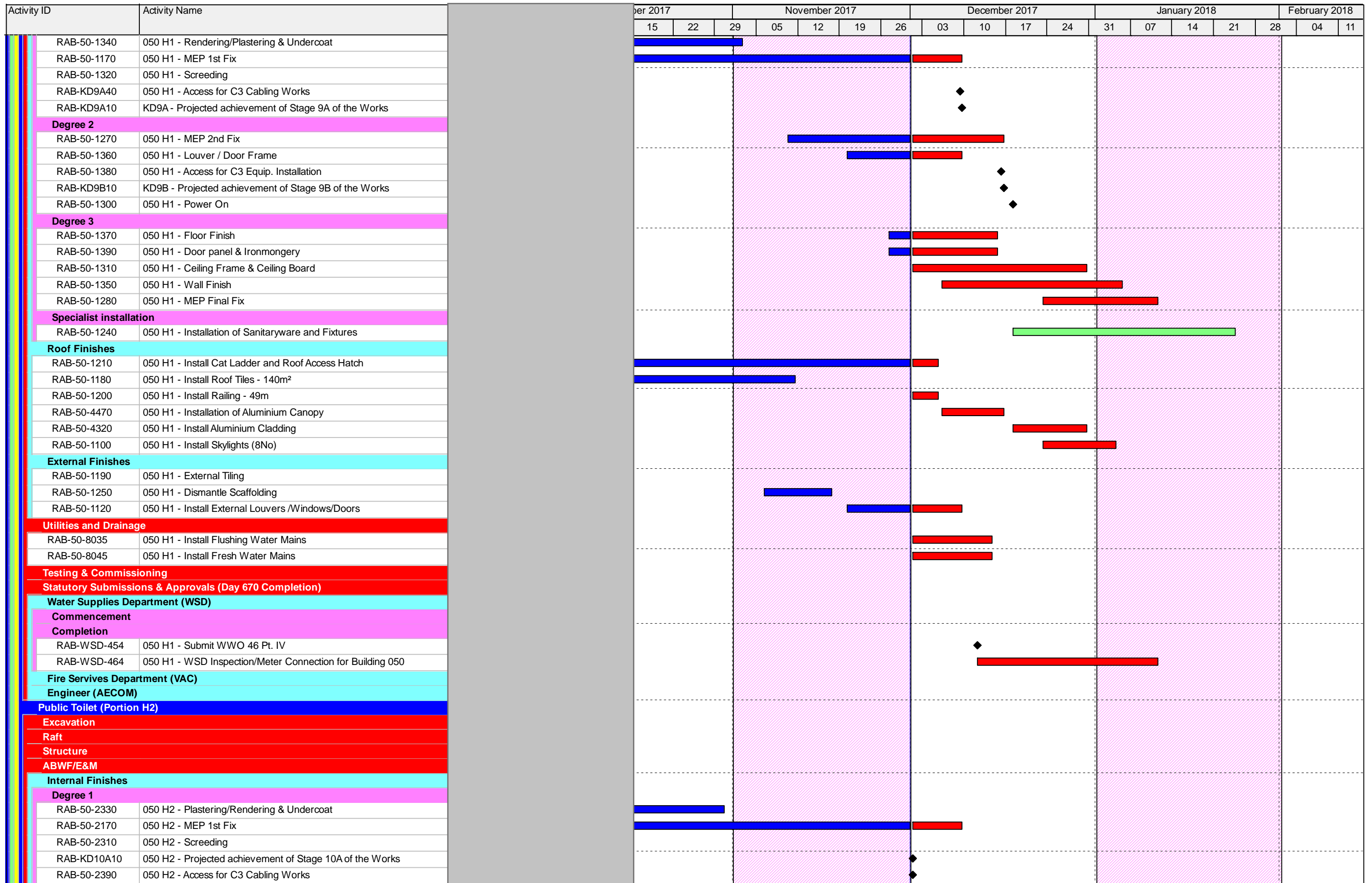
■ Remaining Level of Effort
■ Actual Work
■ Critical Re...
■ Actual Level of Effort
■ Remaining Work
◆ Finish Con...

Date	Revision	Checked	Approved
01-Dec-17	3-Month Rolling Programme Stated 01 D...	SGJ	

Activity ID	Activity Name	October 2017			November 2017				December 2017				January 2018				February 2018		
		15	22	29	05	12	19	26	03	10	17	24	31	07	14	21	28	04	11
RAB-45-1125	045 - Install Genset and switch board G/F																		
RAB-45-6000	045 - Small Glass Canopy North Elevation																		
Window Wall																			
East																			
RAB-45-6960	045 - Install Primary Steelwork for Window Wall																		
RAB-45-6970	045 - Install Secondary Steelwork for Window Wall																		
RAB-45-6980	045 - Glazing to Window Wall																		
West																			
RAB-45-6990	045 - Install Primary Steelwork for Window Wall																		
RAB-45-7000	045 - Install Secondary Steelwork for Window Wall																		
RAB-45-7010	045 - Glazing to Window Wall																		
Utilities and Drainage																			
RAB-45-7935	045 - Construct Permanent Drainage and Manholes (Approx 180m)																		
RAB-45-7945	045 - Utilities and Common Telecom Ducting																		
RAB-45-7955	045 - Install Flushing Water Mains																		
RAB-45-7965	045 - Install Fresh Water Mains																		
RAB-45-7975	045 - Install FS Water Main																		
Testing & Commissioning																			
RAB-TC45-1030	045 - T&C, Lift																		
RAB-TC45-1020	045 - T&C (HVAC, FS, P&D, OTHERS)																		
Statutory Submissions & Approvals (Day 670 Completion)																			
BBE0																			
RAB-BEE-270	045 - Registered Energy Assessor Inspection & Certification																		
RAB-BEE-280	045 - Submit REA Certification to EDMS																		
RAB-BEE-290	045 - EDMS Issue of Cert of Compliance Registration (COCR)																		
EMSD - Building 045 Lift Inspection																			
RAB-FSD-240	045 - Submit EMSD Form 5 (Completion of Lift Installation)																		
RAB-FSD-250	045 - EMSD Lift Inspection																		
RAB-FSD-130	045 - EMSD Lift Certificate Issued - Building 045																		
Fuel Tank - DG License																			
RAB-FSD-660	045 - FSD Inspection & Approval																		
RAB-FSD-680	045 - FSD Issue License																		
Generator Set - EPD Permit																			
Generator Set - DG Licence																			
RAB-FSD-690	045 - Genset Ready for DG Inspection																		
RAB-FSD-700	045 - Notify FSD for DG Inspection																		
RAB-FSD-710	045 - FSD (Vent) /FS Inspection/Process License																		
RAB-FSD-720	045 - DG Licence Issued																		
Water Supplies Department (WSD)																			
Commencement																			
Completion																			
RAB-WSD-654	045 - Submit WWO 46 Pt. IV																		
RAB-WSD-284	045 - WSD's Processing/Inspection/Meter Connection																		
HVAC																			
FSD																			
Engineer (AECOM)																			
RAB-45-7310	045 - Submit Building 045 As Built Drawings to Engineer																		
Building 050 - Public Toilets Type 2																			
Public Toilet (Portion H1)																			
Excavation																			
Raft																			
Structure																			
ABWF/E&M																			
Internal Finishes																			
Degree 1																			

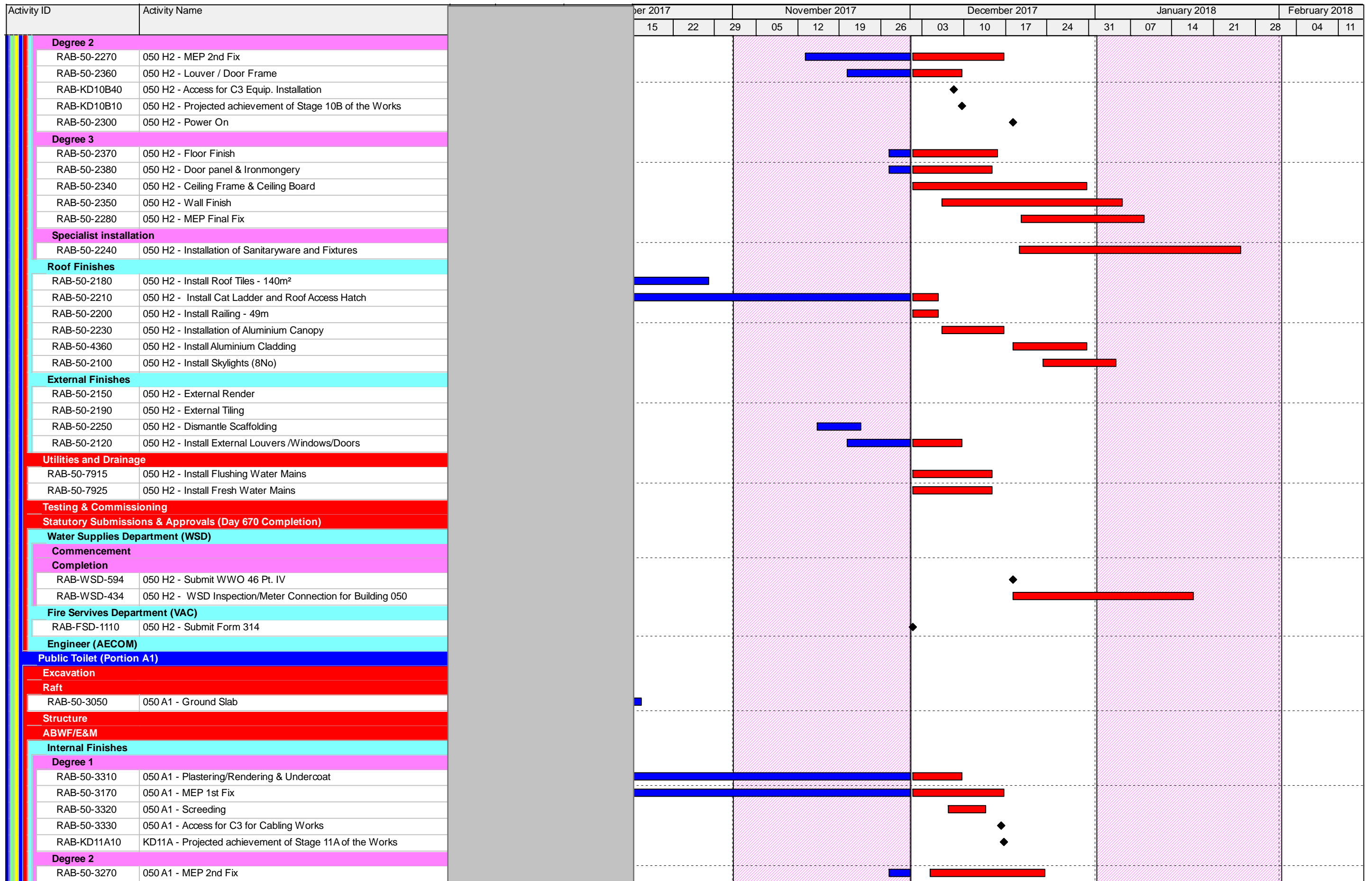
█ Remaining Level of Effort
█ Actual Work
█ Critical Re...
█ Actual Level of Effort
█ Remaining Work
█ Finish Con...

Date	Revision	Checked	Approved
01-Dec-17	3-Month Rolling Programme Stated 01 D...	SGJ	



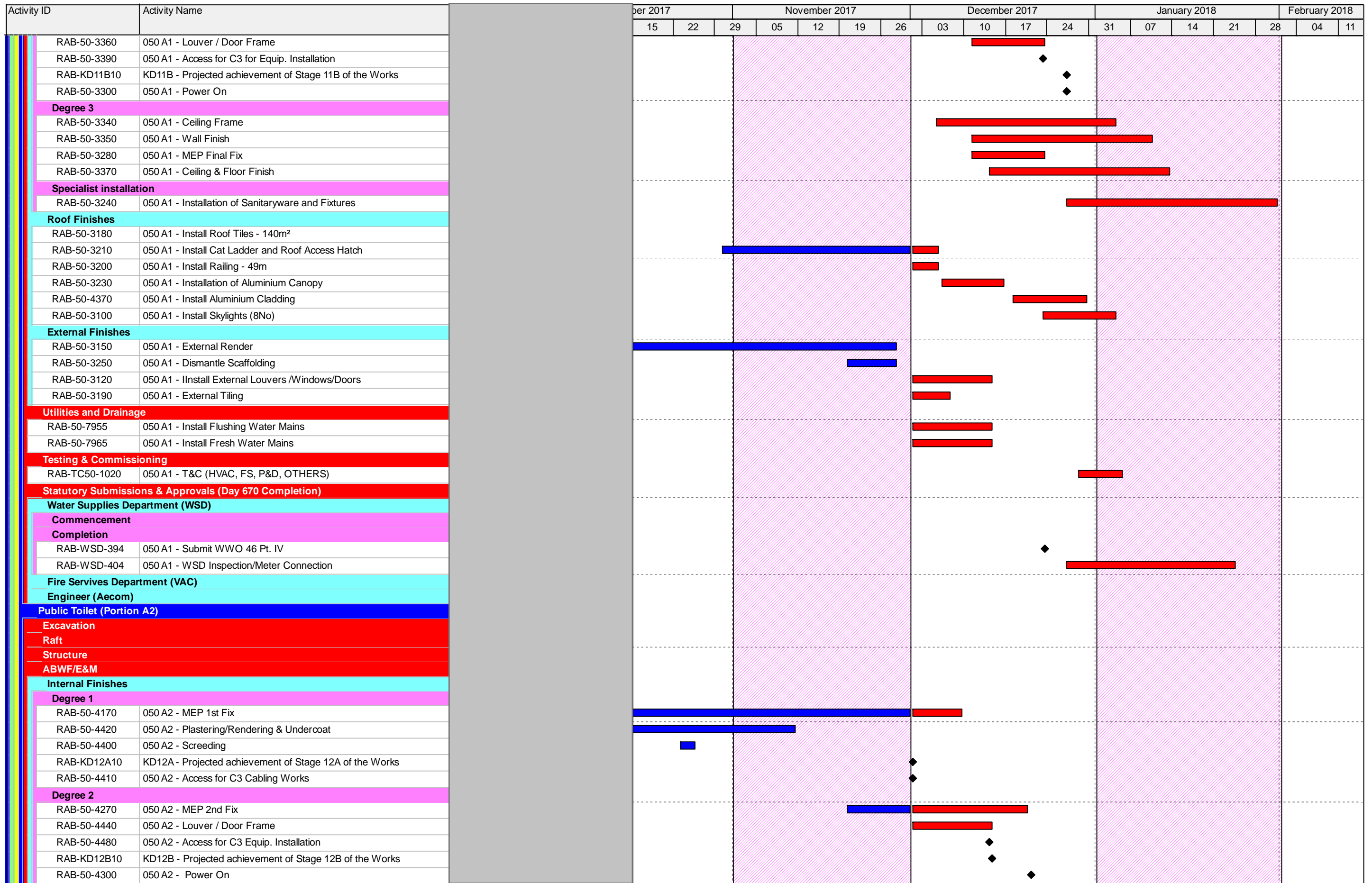
█ Remaining Level of Effort
█ Actual Work
█ Critical Re...
█ Actual Level of Effort
█ Remaining Work
◆ Finish Con...

Date	Revision	Checked	Approved
01-Dec-17	3-Month Rolling Programme Stated 01 D...	SGJ	



■ Remaining Level of Effort
■ Actual Work
■ Critical Re...
■ Actual Level of Effort
■ Remaining Work
◆ Finish Con...

Date	Revision	Checked	Approved
01-Dec-17	3-Month Rolling Programme Stated 01 D...	SGJ	



█ Remaining Level of Effort
█ Actual Work
█ Critical Re...
█ Actual Level of Effort
█ Remaining Work
◆ Finish Con...

Date	Revision	Checked	Approved
01-Dec-17	3-Month Rolling Programme Stated 01 D...	SGJ	

Activity ID	Activity Name	October 2017			November 2017				December 2017				January 2018				February 2018	
		15	22	29	05	12	19	26	03	10	17	24	31	07	14	21	28	04
Degree 3																		
RAB-50-4390	050 A2 - Ceiling Frame	[Red bar: Dec 03 - Dec 17]																
RAB-50-4430	050 A2 - Wall Finish	[Red bar: Dec 10 - Dec 24]																
RAB-50-4280	050 A2 - MEP Final Fix	[Red bar: Dec 17 - Dec 31]																
RAB-50-4450	050 A2 - Ceiling & Floor Finish	[Red bar: Dec 24 - Jan 07]																
RAB-50-4290	050 A2 - Snagging and Remedials	[Red bar: Jan 07 - Jan 14]																
Specialist installation																		
RAB-50-4240	050 A2 - Installation of Sanitaryware and Fixtures	[Red bar: Dec 17 - Jan 07]																
Roof Finishes																		
RAB-50-4180	050 A2 - Install Roof Tiles - 140m²	[Blue bar: Oct 15 - Oct 22]																
RAB-50-4210	050 A2 - Install Cat Ladder and Roof Access Hatch	[Blue bar: Oct 15 - Oct 22]																
RAB-50-4200	050 A2 - Install Railing - 49m	[Red bar: Dec 03 - Dec 10]																
RAB-50-4230	050 A2 - Installation of Aluminium Canopy	[Red bar: Dec 10 - Dec 17]																
RAB-50-4380	050 A2 - Install Aluminium Cladding	[Red bar: Dec 17 - Dec 24]																
RAB-50-4100	050 A2 - Install Skylights (8No)	[Red bar: Dec 24 - Jan 07]																
External Finishes																		
RAB-50-4150	050 A2 - External Render	[Blue bar: Oct 15 - Oct 22]																
RAB-50-4190	050 A2 - External Tiling	[Red bar: Dec 03 - Dec 10]																
RAB-50-4250	050 A2 - Dismantle Scaffolding	[Blue bar: Nov 12 - Nov 19]																
RAB-50-4120	050 A2 - Install External Louvers /Windows/Doors	[Red bar: Dec 03 - Dec 10]																
Utilities and Drainage																		
RAB-50-7975	050 A2 - Construct Permanent Drainage and Manholes (Approx 20m	[Blue bar: Oct 15 - Oct 22]																
RAB-50-7985	050 A2 - Utilites and Common Telecom Ducting	[Blue bar: Oct 15 - Oct 22]																
RAB-50-7995	050 A2 - Install Flushing Water Mains	[Green bar: Dec 03 - Dec 10]																
RAB-50-8005	050 A2 - Install Fresh Water Mains	[Green bar: Dec 03 - Dec 10]																
Testing & Commissioning																		
Statutory Submissions & Approvals (Day 670 Completion)																		
Water Supplies Department (WSD)																		
Commencement																		
Completion																		
RAB-WSD-124	050 A2 - Submit WWO 46 Pt. IV	[Red diamond: Dec 03]																
RAB-WSD-134	050 A2 - WSD Inspection/Meter Connection for Building 050	[Red bar: Jan 07 - Jan 14]																
Fire Servives Department (VAC)																		
RAB-FSD-260	050 A2 - Submit Form 314	[Red diamond: Dec 03]																
Engineer (AECOM)																		
Building 053 - Outbound X-Ray Building																		
Excavation																		
Raft																		
Structure																		
External Walls																		
To First Floor Level																		
Internal Structures																		
First Floor																		
Slabs																		
Cure and Strip																		
1/F - Roof Level																		
Staircases																		
Roof Floor																		
Slabs																		
Cure and Strip																		
ABWF/E&M																		
Ground Floor																		
Degree 1 - G/F																		
Degree 2 - G/F																		
RAB-53-7895	053 - Door/Window frame, frame for Wall Panel & Cladding, G/F																	

█ Remaining Level of Effort
█ Actual Work
█ Critical Re...
█ Actual Level of Effort
█ Remaining Work
◆ Finish Con...

Date	Revision	Checked	Approved
01-Dec-17	3-Month Rolling Programme Stated 01 D...	SGJ	

Activity ID	Activity Name	October 2017			November 2017				December 2017				January 2018				February 2018		
		15	22	29	05	12	19	26	03	10	17	24	31	07	14	21	28	04	11
Degree 3 - G/F																			
RAB-53-0660	053 - Wall Tiling & Wall Painting Final Coat (2), G/F																		
RAB-53-0730	053 - MEP Final Fix, G/F																		
RAB-53-8205	053 - Floor Painting & Tiling, G/F																		
RAB-53-7915	053 - Ceiling Plaster Board, G/F																		
RAB-53-0710	053 - Door Panel & Ironmongery, G/F																		
RAB-53-0700	053 - Glazing, G/F																		
First Floor																			
Degree 1 - 1/F																			
Degree 2 - 1/F																			
RAB-53-8015	053 - Door/Window frame and frame, 1/F																		
RAB-53-8065	053 - Power On, 1/F																		
Degree 3 - 1/F																			
RAB-53-8155	053 - Wall Tiling & Wall Painting Final Coat (2), 1/F																		
RAB-53-8105	053 - MEP Final Fix, 1/F																		
RAB-53-8215	053 - Floor Painting & Tiling, 1/F																		
RAB-53-7995	053 - Ceiling Plaster Board, 1/F																		
RAB-53-8085	053 - Door Panel & Ironmongery, 1/F																		
RAB-53-8075	053 - Glazing, 1/F																		
RAB-53-8195	053 - MEP Balance of Works																		
RAB-53-8125	053 - Snagging and Remedials, 1/F																		
RAB-53-8095	053 - Projected Achievement of Stage 1C, 1/F																		
External Finishes																			
External Facade																			
RAB-53-0500	053 - External Painting																		
RAB-53-0570	053 - Dismantle Scaffolding																		
RAB-53-0640	053 - Make good external surfaces																		
At Grade																			
RAB-53-7615	053 - Prepare Sub Grade																		
RAB-53-7885	053 - Laying Geo Textile																		
RAB-53-7625	053 - Lay Granular Sub-Base																		
RAB-53-7635	053 - Laying Course																		
Roof Finishes																			
RAB-53-0530	053 - Install Railing - 105m																		
RAB-53-0520	053 - Install Roof Tiles - (490m²)																		
Spacialist Installations																			
RAB-53-0600	053 - Install Lift (1 nos)																		
Glazed Canopy																			
RAB-53-0620	053 - Construct high level Canopy at +9.95mPD																		
Utilities and Drainage																			
RAB-53-7595	053 - Construct Permanent Drainage and Manholes (Approx 135m)																		
RAB-53-7610	053 - Install Flushing Water Mains																		
RAB-53-7620	053 - Install Fresh Water Mains																		
RAB-53-7655	053 - Install FS Water Main																		
Testing & Commissioning																			
RAB-TC53-1040	053 - T&C (HVAC, FS, P&D, OTHERS)																		
RAB-TC53-1050	053 - T&C, Lift																		
Statutory Submissions & Approvals (Day 470 Completion)																			
BEO																			
RAB-BEE-420	053 - Registered Energy Assessor Inspection & Certification																		
RAB-BEE-430	053 - Submit REA Certification to EDMS																		
RAB-BEE-440	053 - EDMS Issue of Cert of Compliance Registration (COCR)																		
EMSD - Building 053 Lift Inspection																			
RAB-FSD-150	053 - Submit EMSD Form 5 (Completion of Lift Installation)																		

■ Remaining Level of Effort
■ Actual Work
■ Critical Re...
■ Actual Level of Effort
■ Remaining Work
◆ Finish Con...

Date	Revision	Checked	Approved
01-Dec-17	3-Month Rolling Programme Stated 01 D...	SGJ	

Activity ID	Activity Name	October 2017			November 2017				December 2017				January 2018				February 2018		
		15	22	29	05	12	19	26	03	10	17	24	31	07	14	21	28	04	11
RAB-FSD-160	053 - EMSD Lift Inspection																		
RAB-FSD-090	053 - EMSD Lift Certificate Issued (Fire Lift)																		
Water Supplies Department (WSD)																			
Commencement																			
Completion																			
RAB-WSD-100	053 - Submit WWO 46 Pt. IV																		
RAB-WSD-102	053 - WSD's Processing/Inspection/Meter Connection																		
RAB-WSD-104	053 - WSD Issue WWO 046 Part V, Plumbing Compl. Cert & Water																		
VAC																			
RAB-FSD-1140	053 - Submit Form 314																		
RAB-FSD-1150	053 - Submit Form 501																		
FSD																			
RAB-FSD-410	053 - Submit Form 314																		
RAB-FSD-670	053 - Submit Form 501																		
RAB-FSD-420	053 - FSD Inspection Period																		
RAB-FSD-430	053 - Issue Form 172, FS Compliance Cert.																		
Engineer (AECOM)																			
RAB-53-7460	053 - Submit Building 053 As Built Drawings to Engineer																		
RAB-53-7470	053 - Engineer Inspection Period																		
Building 058 - Outbound X-Ray Scan Tunnel																			
Excavation																			
Raft																			
Structure																			
Walls																			
South																			
North																			
Roof Slabs																			
Cure and Strip																			
ABWF/E&M																			
Internal Finishes																			
Degree 1																			
Degree 2																			
RAB-58-0640	058 - Power On																		
Degree 3																			
RAB-58-0700	058 - Floor Finish (Epoxy Paint)																		
RAB-58-0660	058 - Snagging and Remedials, Bldg. Internal																		
RAB-58-7520	058 - End Users and MoM handover inspection																		
Roof Finishes																			
RAB-58-0540	058 - Install Railing - 152m																		
External Finishes																			
Facade																			
RAB-58-0470	058 - External Painting																		
RAB-58-0620	058 - Make good external surfaces																		
At Grade																			
RAB-58-6760	058 - Prepare Sub Grade																		
RAB-58-6750	058 - Laying Geo Textile																		
RAB-58-6770	058 - Lay Granular Sub-Base																		
RAB-58-6780	058 - Laying Course																		
Glazed Canopy																			
RAB-58-0600	058 - Construct high level canopy at +13.231mPD																		
Utilities and Drainage																			
RAB-58-7570	058 - Install Flushing Water Mains																		
RAB-58-7580	058 - Install Fresh Water Mains																		
RAB-58-7590	058 - Install FS Water main																		
Testing & Commissioning																			

■ Remaining Level of Effort
■ Actual Work
■ Critical Re...
■ Actual Level of Effort
■ Remaining Work
◆ Finish Con...

Date	Revision	Checked	Approved
01-Dec-17	3-Month Rolling Programme Stated 01 D...	SGJ	

Activity ID	Activity Name	October 2017			November 2017				December 2017				January 2018				February 2018		
		15	22	29	05	12	19	26	03	10	17	24	31	07	14	21	28	04	11
RAB-TC58-1060	058 - T&C (HVAC, FS, P&D, OTHERS)																		
Statutory Submissions & Approvals (Day 470 Completion)																			
VAC (FSD)																			
RAB-FSD-100	058 - Submit Form 501 to FSD																		
RAB-FSD-102	058 - FSD Inspection Period For Building 058																		
RAB-FSD-104	058 - Fire Certificate Obtained (Form 172) Handover For Building 058																		
Engineer (AECOM)																			
RAB-58-7490	058 - Submit Building 058 As Built Drawings to Engineer																		
RAB-58-7500	058 - Engineer Inspection Period																		
Building 059 - Inbound X-Ray Scan Tunnel																			
Excavation																			
Raft Foundations																			
Structure																			
Walls																			
West																			
East																			
Roof Slabs																			
Cure and Strip																			
ABWF/E&M																			
Internal Finishes																			
Degree 1																			
Degree 2																			
Degree 3																			
RAB-59-0700	059 - Floor Finish (Epoxy Paint)																		
RAB-59-7560	059 - Snagging and Remedials																		
RAB-59-7550	059 - End Users and MoM handover inspection																		
Roof Finishes																			
RAB-59-0560	059 - Install Railing - 152m																		
External Finishes																			
Facade																			
RAB-59-0480	059 - External Painting																		
RAB-59-0650	059 - Make good external surfaces																		
At Grade																			
RAB-59-6700	059 - Prepare Sub Grade																		
RAB-59-6690	059 - Laying Geo Textile																		
RAB-59-6710	059 - Lay Granular Sub-Base																		
RAB-59-6720	059 - Laying Course																		
RAB-59-6680	059 - Concrete Block Paving																		
RAB-59-0670	059 - Snagging and Remedials																		
Glazed Canopy																			
RAB-59-0610	059 - Construct high level glazed canopy at +13.406mPD North																		
Utilities and Drainage																			
RAB-59-7350	059 - Install Flushing Water Mains																		
RAB-59-7360	059 - Install Fresh Water Mains																		
RAB-59-7370	059 - Install FS Water Main																		
Testing & Commissioning																			
RAB-TC59-1000	059 - T&C (HVAC, FS, P&D, OTHERS)																		
Statutory Submissions & Approvals (Day 470 Completion)																			
VAC																			
RAB-FSD-560	059 - Submit Form 501																		
Fire Services Department (FSD)																			
Commencement																			
Completion																			
Bldg. 059 Ready for FS Inspection (C8 Requirement)																			
RAB-FSD-760	059 - Submit Form 501 to FSD for FS Inspection For Building 059																		

█ Remaining Level of Effort
█ Actual Work
█ Critical Re...
█ Actual Level of Effort
█ Remaining Work
█ Finish Con...

Date	Revision	Checked	Approved
01-Dec-17	3-Month Rolling Programme Stated 01 D...	SGJ	





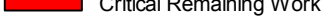


Activity ID	Activity Name	October 2017			November 2017				December 2017				January 2018				February 2018		
		15	22	29	05	12	19	26	03	10	17	24	31	07	14	21	28	04	11
RAB-FSD-740	059 - FSD Inspection Period For Building 059																		
RAB-FSD-750	059 - Fire Certificate Obtained (Form 172) Handover For Building 059																		
Bldg. 059 for FS Inspection (Due to C3 Work Interface)																			
RAB-FSD-470	059 - Submit Form 501 to FSD for FS Inspection For Building 059																		
RAB-FSD-480	059 - FSD Inspection Period For Building 059																		
RAB-FSD-490	059 - Fire Certificate Obtained (Form 172) Handover For Building 059																		
Engineer (AECOM)																			
RAB-59-7520	059 - Submit Building 059 As Built Drawings to Engineer																		
Bldg. 059 Ready for Engineer Inspection (C8 Requirement)																			
RAB-59-7570	059 - Engineer Inspection Period																		
RAB-59-7580	059 - Engineer Issue Occupation Permit																		
RAB-59-7590	KD2 - Projected Completion of Section II of the Works (470 days) Bu																		
Bldg. 059 Ready for Engineer Inspection (Due to C3 Work Interface)																			
RAB-59-7530	059 - Engineer Inspection Period																		
RAB-59-7540	059 - Engineer Issue Occupation Permit																		
RAB-KD24	KD2 - Projected Completion of Section II of the Works (470 days) Bu																		

█ Remaining Level of Effort
█ Actual Work
█ Critical Re...
█ Actual Level of Effort
█ Remaining Work
█ Finish Con...

Date	Revision	Checked	Approved
01-Dec-17	3-Month Rolling Programme Stated 01 D...	SGJ	

Activity ID	Activity Name	2015			2016				2017				2018				2019		
		Q2	Q3	Q4	Q1	Q2	Q3	Q4	Q1	Q2	Q3	Q4	Q1	Q2	Q3	Q4	Q1	Q2	Q3
Hong Kong-Zhuhai_Macao Bridge Hong Kong Boundary Crossing F		<p>22-Oct-17, Hong Kong-Zhuhai_Macao Bridge</p> <p>23-Jun-17, Site and Facility Inspection</p> <p>24-Aug-17, Access Dates</p>																	
Key Dates																			
Interface Activities																			
Site and Facility Inspection																			
JS1200	Pre Site and Facility Inspection by Contractor at Location 4 - Deg2																		
JS1210	Joint Site and Facility Inspection with Interface Contractor at Location 4 - Deg2																		
JS1620	Pre Site and Facility Inspection by Contractor at Location 14 - Deg2																		
JS1630	Joint Site and Facility Inspection with Interface Contractor at Location 14 - Deg2																		
JS1760	Pre Site and Facility Inspection by Contractor at Location 18 - Deg1																		
JS1770	Joint Site and Facility Inspection with Interface Contractor at Location 18 - Deg1																		
JS1780	Pre Site and Facility Inspection by Contractor at Location 18 - Deg2																		
JS1790	Joint Site and Facility Inspection with Interface Contractor at Location 18 - Deg2																		
Access Dates																			
AD1000	Location 1(PCB (001) Basement)-Deg1 (270d)																		
AD1010	Location 1(PCB (001) Basement)-Deg2 (380d)																		
AD1020	Location 1(PCB (001) ELV Room (Grid Line E3))-Deg1 (270d)																		
AD1030	Location 1(PCB (001) ELV Room (Grid Line E3))-Deg2 (380d)																		
AD1040	Location 2(PCB (001) First Floor Main Server Room)-Deg1 (330d)																		
AD1050	Location 2(PCB (001) First Floor Main Server Room)-Deg2 (380d)																		
AD1060	Location 2(PCB (001) First Floor Main Server Room) - For Server Installation - Deg2 (330d)																		
AD1070	Location 2(PCB (001) Ground Floor ELV Room (Grid Line E3)) - Deg1 (330d)																		
AD1080	Location 2(PCB (001) Ground Floor DOH Port Health Control Room (Grid Line BD5)) - Deg1 (330d)																		
AD1090	Location 2(PCB (001) Ground Floor DOH Port Health Control Room (Grid Line BD5)) - Deg2 (380d)																		
AD1130	Location 3(Inbd Cargo Exam Bldg (037) Platform Control Room)-Deg2 (500d)																		
AD1150	Location 3(Inbd Cargo Exam Bldg (037) Inspector Offices 128,129,130,131,128,129,14)																		
AD1170	Location 3a(Inbd Cargo Exam Bldg (037) ROCARS Room)-Deg2 (480d)																		
AD1190	Location 3a(Inbd Cargo Exam Bldg (037) Main Server Room)-Deg2 (480d)																		
AD1200	Location 3a(Inbd Cargo Exam Bldg (037) Main Server Room) - For Server installation - Deg2 (480d)																		
AD1220	Location 4(Outbd Cargo Exam Bldg (023))-Deg2 (680d)																		
AD1240	Location 4a(Outbd Cargo Exam Bldg (023))-Deg2 (630d)																		
AD1270	Location 6(Common Utility Enclosure & Staff Subway)-Deg1 (400d)																		
AD1290	Location 7(Common Utility Enclosure & Staff Subway)-Deg1 (270d)																		
AD1300	Location 8(Inbd Private Car Annex (025))-Deg1 (430d)																		
AD1310	Location 8(Inbd Private Car Annex (025))-Deg2 (580d)																		
AD1320	Location 8(Inbd Private Car Annex (025) Canopy)-Deg1 (430d)																		
AD1330	Location 8(Inbd Private Car Annex (025) Canopy)-Deg2 (580d)																		
AD1340	Location 9(Outbd Private Car Annex (032))-Deg1 (520d)																		
AD1350	Location 9(Outbd Private Car Annex (032))-Deg2 (660d)																		
AD1360	Location 9(Outbd Private Car Annex (032) Canopy)-Deg1 (520d)																		
AD1370	Location 9(Outbd Private Car Annex (032) Canopy)-Deg2 (660d)																		
AD1501	Location 12(Inbd Private Car Kiosks(027))-Deg1 (400d) Phase 2																		
AD1510	Location 12(Inbd Private Car Kiosks(027))-Deg2 (480d) Phase 1																		
AD1511	Location 12(Inbd Private Car Kiosks(027))-Deg2 (480d) Phase 2																		
AD1521	Location 12(Inbd Private Car Kiosks(027) Canopy)-Deg1 (400d) Phase 2																		

Programme No.: HZMB-DWP
Data Date: 14-Aug-15

-  Actual Level of Effort
-  Primary Baseline
-  Actual Work
-  Remaining Work
-  Critical Remaining Work
-  Baseline Milestone
-  Milestone

Hong Kong-Zhuhai-Macao Bridge
Hong Kong Boundary Crossing
Facilities - Automatic Vehicle
Clearance Support System (AVCSS)

Date	Revision	Checked	Approved
14-Nov-16	Rev.: 0	WC	LC
10-Mar-17	Rev.: 1.0a	WC	LC
5-May-17	Rev.: 1.0b	WC	LC

Activity ID	Activity Name	2015			2016				2017				2018				2019		
		Q2	Q3	Q4	Q1	Q2	Q3	Q4	Q1	Q2	Q3	Q4	Q1	Q2	Q3	Q4	Q1	Q2	Q3
AD1530	Location 12(Inbd Private Car Kiosks(027) Canopy)-Deg2 (480d) Phase 1																		
AD1531	Location 12(Inbd Private Car Kiosks(027) Canopy)-Deg2 (480d) Phase 2																		
AD1540	Location 12(Inbd GV Kiosks (028))-Deg1 (400d) Phase 1																		
AD1541	Location 12(Inbd GV Kiosks (028))-Deg1 (400d) Phase 2																		
AD1550	Location 12(Inbd GV Kiosks (028))-Deg2 (480d) Phase 1																		
AD1551	Location 12(Inbd GV Kiosks (028))-Deg2 (480d) Phase 2																		
AD1560	Location 12(Inbd GV Kiosks (028) Canopy)-Deg1 (400d) Phase 1																		
AD1561	Location 12(Inbd GV Kiosks (028) Canopy)-Deg1 (400d) Phase 2																		
AD1570	Location 12(Inbd GV Kiosks (028) Canopy)-Deg2 (480d) Phase 1																		
AD1571	Location 12(Inbd GV Kiosks (028) Canopy)-Deg2 (480d) Phase 2																		
AD1580	Location 12(Outbd GV Kiosks (029))-Deg1 (400d) Phase 1																		
AD1581	Location 12(Outbd GV Kiosks (029))-Deg1 (400d) Phase 2																		
AD1590	Location 12(Outbd GV Kiosks (029))-Deg2 (480d) Phase 1																		
AD1591	Location 12(Outbd GV Kiosks (029))-Deg2 (480d) Phase 2																		
AD1600	Location 12(Outbd GV Kiosks (029) Canopy)-Deg1 (400d) Phase 1																		
AD1601	Location 12(Outbd GV Kiosks (029) Canopy)-Deg1 (400d) Phase 2																		
AD1610	Location 12(Outbd GV Kiosks (029) Canopy)-Deg2 (480d) Phase 1																		
AD1611	Location 12(Outbd GV Kiosks (029) Canopy)-Deg2 (480d) Phase 2																		
AD1620	Location 13(Outbd Private Car Kiosks (030))-Deg1 (480d) Phase 1																		
AD1630	Location 13(Outbd Private Car Kiosks (030))-Deg2 (550d) Phase 1																		
AD1640	Location 13(Outbd Private Car Kiosks (030) Canopy)-Deg1 (480d) Phase 1																		
AD1650	Location 13(Outbd Private Car Kiosks (030) Canopy)-Deg2 (550d) Phase 1																		
AD1660	Location 14(Future-Outbd/Inbd Private Car Kiosks)-Deg1 (610d)																		
AD1670	Location 14(Future-Outbd/Inbd Private Car Kiosks)-Deg2 (680d)																		
AD1700	Location 16(Outbd Traffic Control Kiosk (101))-Deg1 (400d)																		
AD1710	Location 16(Outbd Traffic Control Kiosk (101))-Deg2 (480d)																		
AD1740	Location 18(Outbd Private Car Exam Bldg(024))-Deg1 (-)																		
AD1750	Location 18(Outbd Private Car Exam Bldg(024))-Deg2 (670d)																		
AD1780	(by C03) Underground Ducting (UUD1.1) between CUE and Inbd Cargo Exam Bldg (0																		
AD1790	(by C03) (UUD1.2) between Inbd Cargo Exam Bldg South (037[S]) and DOH Cargo C																		
AD1800	(by C03) (UUD2) between Inbd Cargo Exam Bldg North (037[N]) and Inbd Vehicle Cle																		
AD1810	(by C03) (UUD9.1) btw Inbd Cargo Exam Bldg S.(037[S]) & Inbd PC Exam Bldg(033) &																		
AD1820	(by C03) (UUD9.3) between Inbd Private Car Exam Bldg (033) and Inbd Vehicle Clear																		
AD1830	(by C03) (UUD9.2) between Inbd Private Car Exam Bldg (033) and Inbd Vehicle Clear																		
AD1840	(by C03) Underground Ducting (UUD3.1) between CUE to Outbd Cargo Exam Bldg (0																		
AD1850	(by C03) (UUD3.2) btw Outbd Car Exam Bldg (023) and Outbd PC Exam Bldg (024) a																		
AD1860	(byC03) (UUD4.1) between Outbd Private Car Exam Bldg (024) and Outbd Vehicle Cle																		
AD1870	(byC03) (UUD5) between Outbd Car Exam Bldg South (023[S]) and Outbd Vehicle Cle																		
AD1880	(by C03) Underground Ducting (UUD8) between CUE and Outbd PCA (032)																		
AD1910	(by C03) Inbound Vehicle Clearance Plaza																		
AD1920	(by C03) Outbound Vehicle Clearance Plaza																		
Interfaces Provisions Mobilization Provisions WA4 Site Erection & Servicing																			

Location 12(Inbd Private Car Kiosks(027) Canopy)-Deg2 (480d) Phase 1
 Location 12(Inbd Private Car Kiosks(027) Canopy)-Deg2 (480d) Phase 2
 Location 12(Inbd GV Kiosks (028))-Deg1 (400d) Phase 1
 Location 12(Inbd GV Kiosks (028))-Deg1 (400d) Phase 2
 Location 12(Inbd GV Kiosks (028))-Deg2 (480d) Phase 1
 Location 12(Inbd GV Kiosks (028))-Deg2 (480d) Phase 2
 Location 12(Inbd GV Kiosks (028) Canopy)-Deg1 (400d) Phase 1
 Location 12(Inbd GV Kiosks (028) Canopy)-Deg1 (400d) Phase 2
 Location 12(Inbd GV Kiosks (028) Canopy)-Deg2 (480d) Phase 1
 Location 12(Inbd GV Kiosks (028) Canopy)-Deg2 (480d) Phase 2
 Location 12(Outbd GV Kiosks (029))-Deg1 (400d) Phase 1
 Location 12(Outbd GV Kiosks (029))-Deg1 (400d) Phase 2
 Location 12(Outbd GV Kiosks (029))-Deg2 (480d) Phase 1
 Location 12(Outbd GV Kiosks (029))-Deg2 (480d) Phase 2
 Location 12(Outbd GV Kiosks (029) Canopy)-Deg1 (400d) Phase 1
 Location 12(Outbd GV Kiosks (029) Canopy)-Deg1 (400d) Phase 2
 Location 12(Outbd GV Kiosks (029) Canopy)-Deg2 (480d) Phase 1
 Location 12(Outbd GV Kiosks (029) Canopy)-Deg2 (480d) Phase 2
 Location 13(Outbd Private Car Kiosks (030))-Deg1 (480d) Phase 1
 Location 13(Outbd Private Car Kiosks (030))-Deg2 (550d) Phase 1
 Location 13(Outbd Private Car Kiosks (030) Canopy)-Deg1 (480d) Phase 1
 Location 13(Outbd Private Car Kiosks (030) Canopy)-Deg2 (550d) Phase 1
 Location 14(Future-Outbd/Inbd Private Car Kiosks)-Deg1 (610d)
 Location 14(Future-Outbd/Inbd Private Car Kiosks)-Deg2 (680d)
 Location 16(Outbd Traffic Control Kiosk (101))-Deg1 (400d)
 Location 16(Outbd Traffic Control Kiosk (101))-Deg2 (480d)
 Location 18(Outbd Private Car Exam Bldg(024))-Deg1 (-)
 Location 18(Outbd Private Car Exam Bldg(024))-Deg2 (670d)
 (by C03) Underground Ducting (UUD1.1) between CUE and Inbd Cargo Exam Bldg (0
 (by C03) (UUD1.2) between Inbd Cargo Exam Bldg South (037[S]) and DOH Cargo C
 (by C03) (UUD2) between Inbd Cargo Exam Bldg North (037[N]) and Inbd Vehicle Cle
 (by C03) (UUD9.1) btw Inbd Cargo Exam Bldg S.(037[S]) & Inbd PC Exam Bldg(033) &
 (by C03) (UUD9.3) between Inbd Private Car Exam Bldg (033) and Inbd Vehicle Clear
 (by C03) (UUD9.2) between Inbd Private Car Exam Bldg (033) and Inbd Vehicle Clear
 (by C03) Underground Ducting (UUD3.1) between CUE to Outbd Cargo Exam Bldg (0
 (by C03) (UUD3.2) btw Outbd Car Exam Bldg (023) and Outbd PC Exam Bldg (024) a
 (byC03) (UUD4.1) between Outbd Private Car Exam Bldg (024) and Outbd Vehicle Cle
 (byC03) (UUD5) between Outbd Car Exam Bldg South (023[S]) and Outbd Vehicle Cle
 (by C03) Underground Ducting (UUD8) between CUE and Outbd PCA (032)
 (by C03) Inbound Vehicle Clearance Plaza
 (by C03) Outbound Vehicle Clearance Plaza

12-Aug-17, Interfaces Provisions
 22-Oct-17, Mobilization Provisions

Programme No.: HZMB-DWP Data Date: 14-Aug-15		Hong Kong-Zhuhai-Macao Bridge Hong Kong Boundary Crossing Facilities - Automatic Vehicle Clearance Support System (AVCSS)	<table border="1"> <thead> <tr> <th>Date</th> <th>Revision</th> <th>Checked</th> <th>Approved</th> </tr> </thead> <tbody> <tr> <td>14-Nov-16</td> <td>Rev.: 0</td> <td>WC</td> <td>LC</td> </tr> <tr> <td>10-Mar-17</td> <td>Rev.: 1.0a</td> <td>WC</td> <td>LC</td> </tr> <tr> <td>5-May-17</td> <td>Rev.: 1.0b</td> <td>WC</td> <td>LC</td> </tr> </tbody> </table>	Date	Revision	Checked	Approved	14-Nov-16	Rev.: 0	WC	LC	10-Mar-17	Rev.: 1.0a	WC	LC	5-May-17	Rev.: 1.0b	WC	LC
Date	Revision	Checked	Approved																
14-Nov-16	Rev.: 0	WC	LC																
10-Mar-17	Rev.: 1.0a	WC	LC																
5-May-17	Rev.: 1.0b	WC	LC																

Activity ID	Activity Name	2015												2016				2017				2018				2019		
		Q2	Q3	Q4	Q1	Q2	Q3	Q4	Q1	Q2	Q3	Q4	Q1	Q2	Q3	Q4	Q1	Q2	Q3	Q1	Q2	Q3						
	Detailed Design Specification																											
	Construction Design and Management																											
	Supply/Manufacture Mock-up items																											
	Supply/Manufacture prototypes																											
	Software Design, Coding and Testing																											
	Coding																											
	Software System Inetgration																											
	Prototype & Software Simulation Tests																											
	Procurement - Phase 1 / Section I																											
	Supply/Manufacture products for FAT																											
	Factory Acceptance Test (FAT)																											
	Supply/Manufacture Equipment																											
	Delivery and Bench Acceptance Test for Phase 1/ Section I																											
	Installation - Phase 1 / Section I																											
	Location 1(PCB (001) Basement)																											
	EM1920 L1(001)B/F - Cable Laying and termination at Location 1 and Location 2																											
	Location 1(PCB (001) ELV Room (Grid Line E3))																											
	EM1940 L1(001)ELV Rm - Cable Laying and termination at Location 1 and Location 2																											
	Location 2(PCB (001) Ground Floor ELV Room (Grid Line E3))																											
	EM1960 L2(001)ELV Rm - Cable Laying and termination at Location 1 and Location 2																											
	Location 2(PCB (001) Ground Floor DOH Port Health Control Room (Grid Line BD5))																											
	EM1080 L2(001)Heath Ctrl Rm - Cable Laying and termination at Location 1 and Location 2																											
	EM1100 L2(001)Heath Ctrl Rm - Cable Splicing and Testing and Labeling																											
	EM1120 L2(001)Health Ctrl Rm - Intercom and PA system Installation																											
	EM1140 L2(001)Heath Ctrl Rm - Intercom and PA system tuning																											
	Location 2(PCB (001) First Floor Main Server Room)																											
	EM1000 L2(001)Main Server Rm - Cable Laying and termination at Location 1 and Location 2																											
	EM1020 L2(001)Main Server Rm - Cable Splicing and Testing and Labeling																											
	EM1040 L2(001)Main Server Rm - AVCSS Network and Server Installation																											
	EM1060 L2(001)Main Server Rm - AVCSS Network and Server Tuning																											
	Location 3(Inbd Cargo Exam Bldg (037) MDF Room)																											
	Location 3(Inbd Cargo Exam Bldg (037) ELV Room)																											
	Location 3(Inbd Cargo Exam Bldg (037) Inspector Offices 128,129,130,131,128,129,141)																											
	EM2020 L3(037)Inspec Offices - Cable Laying and termination in Location 3 and Location 3a																											
	EM2040 L3(037)Inspec Offices - Cable Splicing and Testing and Labeling																											
	EM2060 L3(037)Inspec Offices - AVCSS SURCON WS and 55" LCD Installation																											
	EM2080 L3(037)Inspec Offices - VTS WS Installation																											
	EM2100 L3(037)Inspec Offices - SURCON and WS Tuning																											
	Location 3(Inbd Cargo Exam Bldg (037) Platform Control Room)																											
	EM1160 L3(037)PLF Ctrl Rm - Cable Laying and termination in Location 3 and Location 3a																											
	EM1180 L3(037)PLF Ctrl Rm - Cable Splicing and Testing and Labeling																											
	EM1200 L3(037)PLF Ctrl Rm - AVCSS SYSCON WS and 55" TV Wall Installation																											
	EM1220 L3(037)PLF Ctrl Rm - AVCSS SYSCON WS Tuning																											

01-Sep-17; Installation - Phase 1 / Section I
 22-Jun-17; Location:1(PCB (001);Basement)
 L1(001)B/F - Cable Laying and termination at Location
 22-Jun-17; Location:1(PCB (001);ELV Room (Grid Line
 L1(001)ELV Rm - Cable Laying and termination at Loca
 22-Jun-17; Location:2(PCB (001);Ground Floor ELV R
 L2(001)ELV Rm - Cable Laying and termination at Loca
 18-Aug-17; Location:2(PCB (001);Ground Floor DO
 L2(001)Heath Ctrl Rm - Cable Laying and termination
 L2(001)Heath Ctrl Rm - Cable Splicing and Testing and
 L2(001)Health Ctrl Rm - Intercom and PA system In
 L2(001)Health Ctrl Rm - Intercom and PA system tu
 21-Aug-17; Location:2(PCB (001); First Floor Main
 L2(001)Main Server Rm - Cable Laying and terminatio
 L2(001)Main Server Rm - Cable Splicing and Testing
 L2(001)Main Server Rm - AVCSS Network and Ser
 L2(001)Main Server Rm - AVCSS Network and Se
 07-Aug-17; Location:3(Inbd Cargo Exam Bldg (037)
 L3(037)Inspec Offices - Cable Laying and termination in
 L3(037)Inspec Offices - Cable Splicing and Testing and
 L3(037)Inspec Offices - AVCSS SURCON WS and 5
 L3(037)Inspec Offices - VTS WS Installation
 L3(037)Inspec Offices - SURCON and WS Tuning
 07-Aug-17; Location:3(Inbd Cargo Exam Bldg (037)
 L3(037)PLF Ctrl Rm - Cable Laying and termination in
 L3(037)PLF Ctrl Rm - Cable Splicing and Testing and
 L3(037)PLF Ctrl Rm - AVCSS SYSCON WS and 55
 L3(037)PLF Ctrl Rm - AVCSS SYSCON WS Tuning

Programme No.: HZMB-DWP Data Date: 14-Aug-15	Actual Level of Effort	summary	Hong Kong-Zhuhai-Macao Bridge Hong Kong Boundary Crossing Facilities - Automatic Vehicle Clearance Support System (AVCSS)	Date	Revision	Checked	Approved
	Primary Baseline			14-Nov-16	Rev.: 0	WC	LC
	Actual Work			10-Mar-17	Rev.: 1.0a	WC	LC
	Remaining Work Critical Remaining Work			5-May-17	Rev.: 1.0b	WC	LC
	Baseline Milestone Milestone						

Activity ID	Activity Name	2015															2016				2017				2018				2019																										
		Q2			Q3			Q4			Q1			Q2			Q3			Q4			Q1			Q2			Q3																										
Outbd Vehicle Clearance Plaza - 8 nos VID, 6 nos VTS, 4 nos TLS																													▼ 02-Aug-17, Outbd Vehicle Clearance Plaza - 8 nos V																										
EM3160	Outbound VID cabling from pillar box to VID field equipment																												■ Outbound VID cabling from pillar box to VID field equipr																										
EM3180	Outbound VTS cabling from pillar box to VTS field equipment																												■ Outbound VTS cabling from pillar box to VTS field equi																										
EM3200	Outbound TLS cabling from pillar box to TLS field equipment																												■ Outbound TLS cabling from pillar box to TLS field equ																										
EM3220	Outbound VID field equipment installation (8 VID)																												■ Outbound VID field equipment installation (8 VID)																										
EM3240	Outbound VTS field equipment installation (3 RFID + 3 Cameras)																												■ Outbound VTS field equipment installation (3 RFID +																										
EM3260	Outbound TLS field equipment installation (4 TLS)																												■ Outbound TLS field equipment installation (4 TLS)																										
EM3280	Outbound VID and VTS and TLS field equipment tuning																												■ Outbound VID and VTS and TLS field equipment tun																										
Underground Ducting (UUD1.1) between CUE and Inbd Cargo Exam Bldg (037)																													▼ 13-Jun-17, Underground Ducting (UUD1.1) between C																										
UD1000	(UUD1.1 [CUE-037]) - Cable laying and termination																												■ (UUD1.1 [CUE-037]) - Cable laying and termination;																										
(UUD1.2) between Inbd Cargo Exam Bldg South (037[S]) and DOH Cargo Clearance Bldg (037[S])																													▼ 27-Jun-17, (UUD1.2) between Inbd Cargo Exam Bldg																										
UD1060	(UUD1.2 [037[S]-043]) - Cable laying and termination																												■ (UUD1.2 [037[S]-043]) - Cable laying and termination																										
Underground Ducting (UUD6) between CUE and Shuttle Bus Kiosk (006) and Inbd Private Car Exam Bldg (033)																																																							
(UUD9.1) btw IB Cargo Exam Bldg South(037[S]) & IB PC Exam Bldg(033) & IB Traffic Control Bldg (033)																													▼ 12-Jul-17, (UUD9.1) btw IB Cargo Exam Bldg South(
UD1040	(UUD9.1 [037[S]-033-100]) - Cable laying and termination																												■ (UUD9.1 [037[S]-033-100]) - Cable laying and termina																										
(UUD2) between Inbd Cargo Exam Bldg North (037[N]) to Inbd VCP																													▼ 26-Jul-17, (UUD2) between Inbd Cargo Exam Bldg I																										
UD1010	(UUD2 [037[N]-IB VCP]) - Cable laying and termination																												■ (UUD2 [037[N]-IB VCP]) - Cable laying and terminat																										
(UUD9.3) between Inbd Private Car Exam Bldg (033) and Inbd Vehicle Clearance Plaza																													▼ 09-Aug-17, (UUD9.3) between Inbd Private Car Ex																										
UD1070	(UUD9.3 [033-IB VCP[W]]) - Cable laying and termination																												■ (UUD9.3 [033-IB VCP[W]]) - Cable laying and termi																										
(UUD9.2) between Inbd Private Car Exam Bldg (033) and Inbd Vehicle Clearance Plaza																													▼ 23-Aug-17, (UUD9.2) between Inbd Private Car E																										
UD1020	(UUD9.2 [033-IB VCP[E]]) - Cable laying and termination																												■ (UUD9.2 [033-IB VCP[E]]) - Cable laying and termi																										
Underground Ducting (UUD7) between PCB(001) and Inbd Coach Kiosks(010)																																																							
Underground Ducting (UUD3.1) between CUE and Outbd Cargo Exam Bldg (023)																													▼ 14-Jun-17, Underground Ducting (UUD3.1) between C																										
UD1030	(UUD3.1 [CUE-023]) - Cable laying and termination																												■ (UUD3.1 [CUE-023]) - Cable laying and termination;																										
(UUD3.2) btw OB Car Exam Bldg(023) & OB PC Exam Bldg(024) & OB Traffic Control Bldg (023)																													▼ 28-Jun-17, (UUD3.2) btw OB Car Exam Bldg(023) & C																										
UD1050	(UUD3.2 [023-024-101]) - Cable laying and termination																												■ (UUD3.2 [023-024-101]) - Cable laying and termination																										
Underground Ducting (UUD8) between CUE and Outbd PCA (032)																													▼ 13-Jun-17, Underground Ducting (UUD8) between CUE																										
UD1100	(UUD8 [CUE-032]) - Cable laying and termination																												■ (UUD8 [CUE-032]) - Cable laying and termination																										
(UUD4.1) between Outbd PC Exam Bldg (024) and Outbd Vehicle Clearance Plaza																													▼ 13-Jul-17, (UUD4.1) between Outbd PC Exam Bldg(
UD1080	(UUD4.1 [024-OB VCP]) - Cable laying and termination																												■ (UUD4.1 [024-OB VCP]) - Cable laying and terminat																										
(UUD5) between Outbd Car Exam Bldg (023[S]) and Outbd Vehicle Clearance Plaza																													▼ 27-Jun-17, (UUD5) between Outbd Car Exam Bldg (02																										
UD1090	(UUD5 [023[S]-OB VCP]) - Cable laying and termination																												■ (UUD5 [023[S]-OB VCP]) - Cable laying and terminat																										
Initial On-Site Test and Commissioning / Pre-SAT (Phase 1 / Section I)																																																							
Site Acceptance Test (Phase 1 / Section I)																																																							
Security Risk Assessment and Audit																																																							
Operability Period Test (Phase 1 / Section I)																																																							
Completion (Phase 1 /Section I)																																																							
Training and Document (Phase 1 /Section I)																																																							
Operation (Phase 1 /Section I)																																																							
Engineering Support for Phase 1 / Section I																																																							
Procurement - Phase 2 / Section II																																																							
Delivery and Bench Acceptance Test for Phase 2/Section II																																																							
Installation - Phase 2 / Section II																													▼ 30-Aug-17, Installation -Phase 2 / Section II																										








Programme No.: HZMB-DWP Data Date: 14-Aug-15		Hong Kong-Zhuhai-Macao Bridge Hong Kong Boundary Crossing Facilities - Automatic Vehicle Clearance Support System (AVCSS)	Date	Revision	Checked	Approved
			14-Nov-16	Rev.: 0	WC	LC
			10-Mar-17	Rev.: 1.0a	WC	LC
			5-May-17	Rev.: 1.0b	WC	LC

Activity ID	Activity Name	2015			2016				2017				2018				2019			
		Q2	Q3	Q4	Q1	Q2	Q3	Q4	Q1	Q2	Q3	Q4	Q1	Q2	Q3	Q4	Q1	Q2	Q3	
Location 8(Inbd Private Car Annex (025)) (Phase 2)		▼ 30-Aug-17; Location 8(Inbd Private Car Annex (025)) (Phase 2)																		
EM3370	L8(025) - Cable Containment in Kiosks																			▼ L8(025) - Cable Containment in Kiosks
EM3380	L8(025) - Cable Laying and termination																			▼ L8(025) - Cable Laying and termination
EM3400	L8(025) - Cable Splicing and Testing and Labeling																			▼ L8(025) - Cable Splicing and Testing and Labeling
Location 9(Outbd Private Car Annex (032)) (Phase 2)		▼ 30-Aug-17; Location 9(Outbd Private Car Annex (032)) (Phase 2)																		
EM3500	L9(032) - Cable Containment in Kiosks																			▼ L9(032) - Cable Containment in Kiosks
EM3520	L9(032) - Cable Laying and termination																			▼ L9(032) - Cable Laying and termination
Initial On-Site Test and Commissioning / Pre-SAT (Phase 2 / Section II)																				
Site Acceptance Test (Phase 2 / Section II)																				
Operability Period Test (Phase 2 / Section II)																				
Completion (Phase 2 / Section II)																				
Engineering Support for Phase 2 / Section II																				
Procurement for Phase2 / Section III																				
Delivery and Bench Acceptance Test for Phase2 / Section III																				
Installation - Phase 2 / Section III																				
Location 10,11,12,13 (Vehicle Clearance Kiosks)		▼ 09-Oct-17; Installation - Phase 2/ Section III																		
Location 12 Inbd Private Car Kiosks (027) - 12 nos (Phase 2)		▼ 09-Oct-17; Location 10,11,12,13 (Vehicle Clearance Kiosks)																		
EM4440	L12(027)(12nos P2) - Cable Laying and termination																			▼ 09-Oct-17; Location 12 Inbd Private Car Kiosks
EM4460	L12(027)(12nos P2) - Cable Splicing and Testing and Labeling																			▼ L12(027)(12nos P2) - Cable Laying and termination
EM4480	L12(027)(12nos P2) - AVCSS/DOH/MOM Kiosk Equipment Installation (12 nos)																			▼ L12(027)(12nos P2) - Cable Splicing and Testing and Labeling
Location 13 Outbd Private Car Kiosks (030) - 12 nos (Phase 2)		▼ 01-Sep-17; Location 13 Outbd Private Car Kiosks																		
EM4560	L13(030)(12nos P2) - Cable Containment in Kiosks																			▼ L13(030)(12nos P2) - Cable Containment in Kiosk
Location 12 Outbd Goods Vehicle Kiosks (029) - 3 nos (Phase 2)		▼ 31-Aug-17; Location 12 Outbd Goods Vehicle Kiosks																		
EM4880	L12(029)(3nos P2) - Cable Laying and termination																			▼ L12(029)(3nos P2) - Cable Laying and termination
EM4900	L12(029)(3nos P2) - Cable Splicing and Testing and Labeling																			▼ L12(029)(3nos P2) - Cable Splicing and Testing and
EM4920	L12(029)(3nos P2) - AVCSS/DOH/MOM Kiosk Equipment Installation (3 nos)																			▼ L12(029)(3nos P2) - AVCSS/DOH/MOM Kiosk Equip
EM4940	L12(029)(3nos P2) - ODB & XDB Installation (3 nos)																			▼ L12(029)(3nos P2) - ODB & XDB Installation (3 nos
EM4960	L12(029)(3nos P2) - AIOP Installation (3 nos)																			▼ L12(029)(3nos P2) - AIOP Installation (3 nos)
EM4980	L12(029)(3nos P2) - Loop Installation (15 nos)																			▼ L12(029)(3nos P2) - Loop Installation (15 nos)
Location 11 Outbd Coach Kiosks (009) - 4 nos (Phase 2)																				
Location 12 Inbd Goods Vehicle Kiosks (028) - 3 nos (Phase 2)		▼ 24-Aug-17; Location 12 Inbd Goods Vehicle Kiosks																		
EM4720	L12(028)(3nos P2) - Cable Laying and termination																			▼ L12(028)(3nos P2) - Cable Laying and termination
EM4740	L12(028)(3nos P2) - Cable Splicing and Testing and Labeling																			▼ L12(028)(3nos P2) - Cable Splicing and Testing and
EM4760	L12(028)(3nos P2) - AVCSS/DOH/MOM Kiosk Equipment Installation (3 nos)																			▼ L12(028)(3nos P2) - AVCSS/DOH/MOM Kiosk Equip
EM4780	L12(028)(3nos P2) - ODB & XDB Installation (3 nos)																			▼ L12(028)(3nos P2) - ODB & XDB Installation (3 nos
EM4800	L12(028)(3nos P2) - AIOP Installation (3 nos)																			▼ L12(028)(3nos P2) - AIOP Installation (3 nos)
EM4820	L12(028)(3nos P2) - Loop Installation (15 nos)																			▼ L12(028)(3nos P2) - Loop Installation (15 nos)
EM4840	L12(028)(3nos P2) - Kiosk Equipment Configuration (3 nos)																			▼ L12(028)(3nos P2) - Kiosk Equipment Configurati
EM5120	L12(028)(3nos P2) - Inbd Goods Vehicle Kiosks Installation Complete																			▼ L12(028)(3nos P2) - Inbd Goods Vehicle Kiosks Ins
Location 10 Shuttle Bus Kiosks (006) - 4 nos (Phase 2)		▼ 30-Aug-17; Location 10 Shuttle Bus Kiosks (006) -																		
EM4000	L10(006)(4nos P2) - Cable Containment in Kiosks																			▼ L10(006)(4nos P2) - Cable Containment in Kiosks
Location 11 Inbd Coach Kiosks (010) - 2 nos (Phase 2)-1																				
Location 11 Inbd Coach Kiosks (010) - 2 nos (Phase 2)-2																				
Initial On-Site Test and Commissioning / Pre-SAT (Phase 2 / Section III)																				

Programme No.: HZMB-DWP Data Date: 14-Aug-15		Hong Kong-Zhuhai-Macao Bridge Hong Kong Boundary Crossing Facilities - Automatic Vehicle Clearance Support System (AVCSS)	Date	Revision	Checked	Approved
			14-Nov-16	Rev.: 0	WC	LC
			10-Mar-17	Rev.: 1.0a	WC	LC
			5-May-17	Rev.: 1.0b	WC	LC

Activity ID	Activity Name	2015			2016				2017				2018				2019			
		Q2	Q3	Q4	Q1	Q2	Q3	Q4	Q1	Q2	Q3	Q4	Q1	Q2	Q3	Q4	Q1	Q2	Q3	
	<ul style="list-style-type: none">  Site Acceptance Test (Phase 2 / Section III)  Operability Period Test (Phase 2 / Section III)  Completion (Phase 2 / Section III)  Operation (Phase 2 / Section III)  Defect Liability Period (DLP)  Document Submission (Phase 2 / Section III) 																			

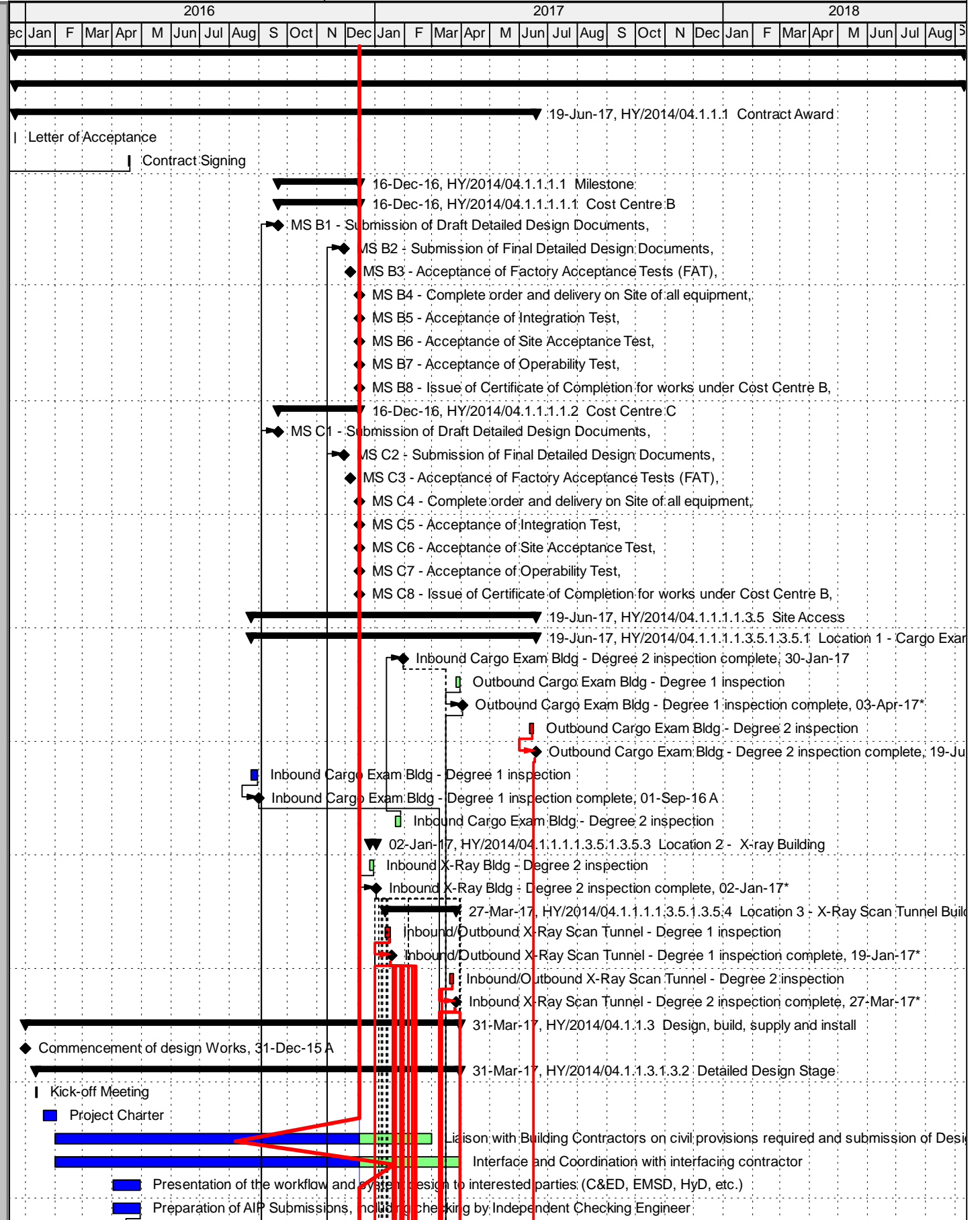
Programme No.: HZMB-DWP
Data Date: 14-Aug-15

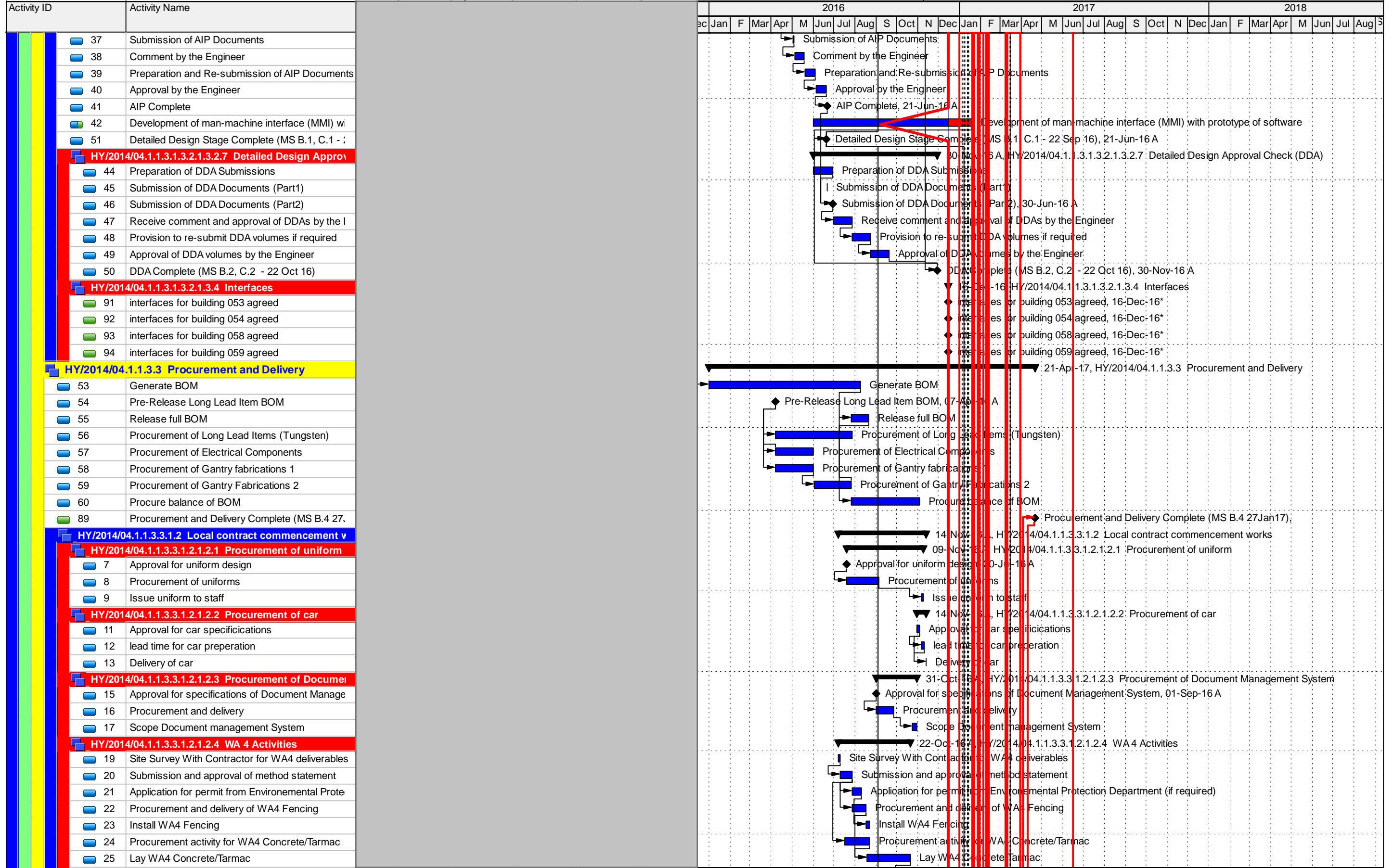
-  Actual Level of Effort
-  Primary Baseline
-  Actual Work
-  Remaining Work
-  Critical Remaining Work
-  Baseline Milestone
-  Milestone

Hong Kong-Zhuhai-Macao Bridge
Hong Kong Boundary Crossing
Facilities - Automatic Vehicle
Clearance Support System (AVCSS)

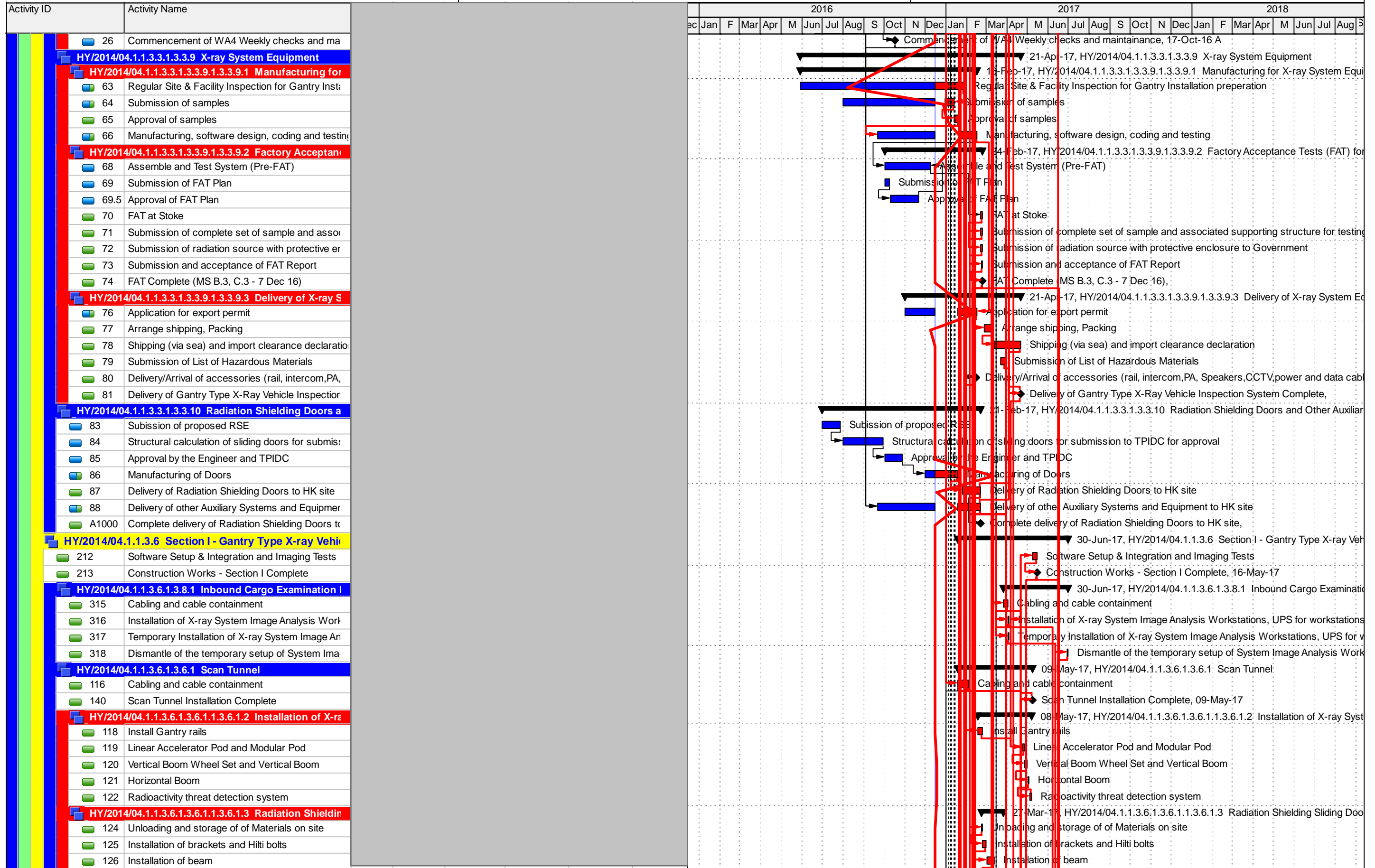
Date	Revision	Checked	Approved
14-Nov-16	Rev.: 0	WC	LC
10-Mar-17	Rev.: 1.0a	WC	LC
5-May-17	Rev.: 1.0b	WC	LC

Activity ID	Activity Name
HY/2014/04 Hong Kong-Zhuhai-Macao Bridge	
HY/2014/04.1 Contract No. HY/2014/04 Hong Kong-Zhuhai-Macao Bridge	
HY/2014/04.1.1.1 Contract Award	
3	Letter of Acceptance
4	Contract Signing
HY/2014/04.1.1.1.1 Milestone	
HY/2014/04.1.1.1.1.1 Cost Centre B	
A1C	MS B1 - Submission of Draft Detailed Design Documents
A1C	MS B2 - Submission of Final Detailed Design Documents
A1C	MS B3 - Acceptance of Factory Acceptance Tests (FAT)
A1C	MS B4 - Complete order and delivery on Site of all equipment
A1C	MS B5 - Acceptance of Integration Test
A1C	MS B6 - Acceptance of Site Acceptance Test
A1C	MS B7 - Acceptance of Operability Test
A1C	MS B8 - Issue of Certificate of Completion for works under Cost Centre B
HY/2014/04.1.1.1.1.2 Cost Centre C	
A1C	MS C1 - Submission of Draft Detailed Design Documents
A11	MS C2 - Submission of Final Detailed Design Documents
A11	MS C3 - Acceptance of Factory Acceptance Tests (FAT)
A11	MS C4 - Complete order and delivery on Site of all equipment
A11	MS C5 - Acceptance of Integration Test
A11	MS C6 - Acceptance of Site Acceptance Test
A11	MS C7 - Acceptance of Operability Test
A11	MS C8 - Issue of Certificate of Completion for works under Cost Centre C
HY/2014/04.1.1.1.3.5 Site Access	
HY/2014/04.1.1.1.3.5.1.3.5.1 Location 1 - Cargo Exam Bldg - Degree 2 inspection	
100	Inbound Cargo Exam Bldg - Degree 2 inspection
102	Outbound Cargo Exam Bldg - Degree 1 inspection
103	Outbound Cargo Exam Bldg - Degree 1 inspection
104	Outbound Cargo Exam Bldg - Degree 2 inspection
105	Outbound Cargo Exam Bldg - Degree 2 inspection
97	Inbound Cargo Exam Bldg - Degree 1 inspection
98	Inbound Cargo Exam Bldg - Degree 1 inspection
99	Inbound Cargo Exam Bldg - Degree 2 inspection
HY/2014/04.1.1.1.3.5.1.3.5.3 Location 2 - X-ray Building	
107	Inbound X-Ray Bldg - Degree 2 inspection
108	Inbound X-Ray Bldg - Degree 2 inspection complete
HY/2014/04.1.1.1.3.5.1.3.5.4 Location 3 - X-Ray Scan Tunnel Building	
110	Inbound/Outbound X-Ray Scan Tunnel - Degree 1 inspection
111	Inbound/Outbound X-Ray Scan Tunnel - Degree 1 inspection
112	Inbound/Outbound X-Ray Scan Tunnel - Degree 2 inspection
113	Inbound X-Ray Scan Tunnel - Degree 2 inspection
HY/2014/04.1.1.3 Design, build, supply and install	
28	Commencement of design Works
HY/2014/04.1.1.3.1.3.2 Detailed Design Stage	
30	Kick-off Meeting
31	Project Charter
32	Liaison with Building Contractors on civil provisions required and submission of Design
33	Interface and Coordination with interfacing contractor
35	Presentation of the workflow and system design to interested parties (C&ED, EMSD, HyD, etc.)
36	Preparation of AIP Submissions, including check by Independent Checking Engineer





█ Actual Level of Effort █ Remaining Work ◆ Milestone
█ Actual Work █ Critical Remaining Work ▼ summary



Legend for Gantt chart symbols:

- Actual Level of Effort (Blue bar)
- Remaining Work (Green bar)
- Milestone (Diamond)
- Actual Work (Blue bar)
- Critical Remaining Work (Red bar)
- Summary (Black bar)

