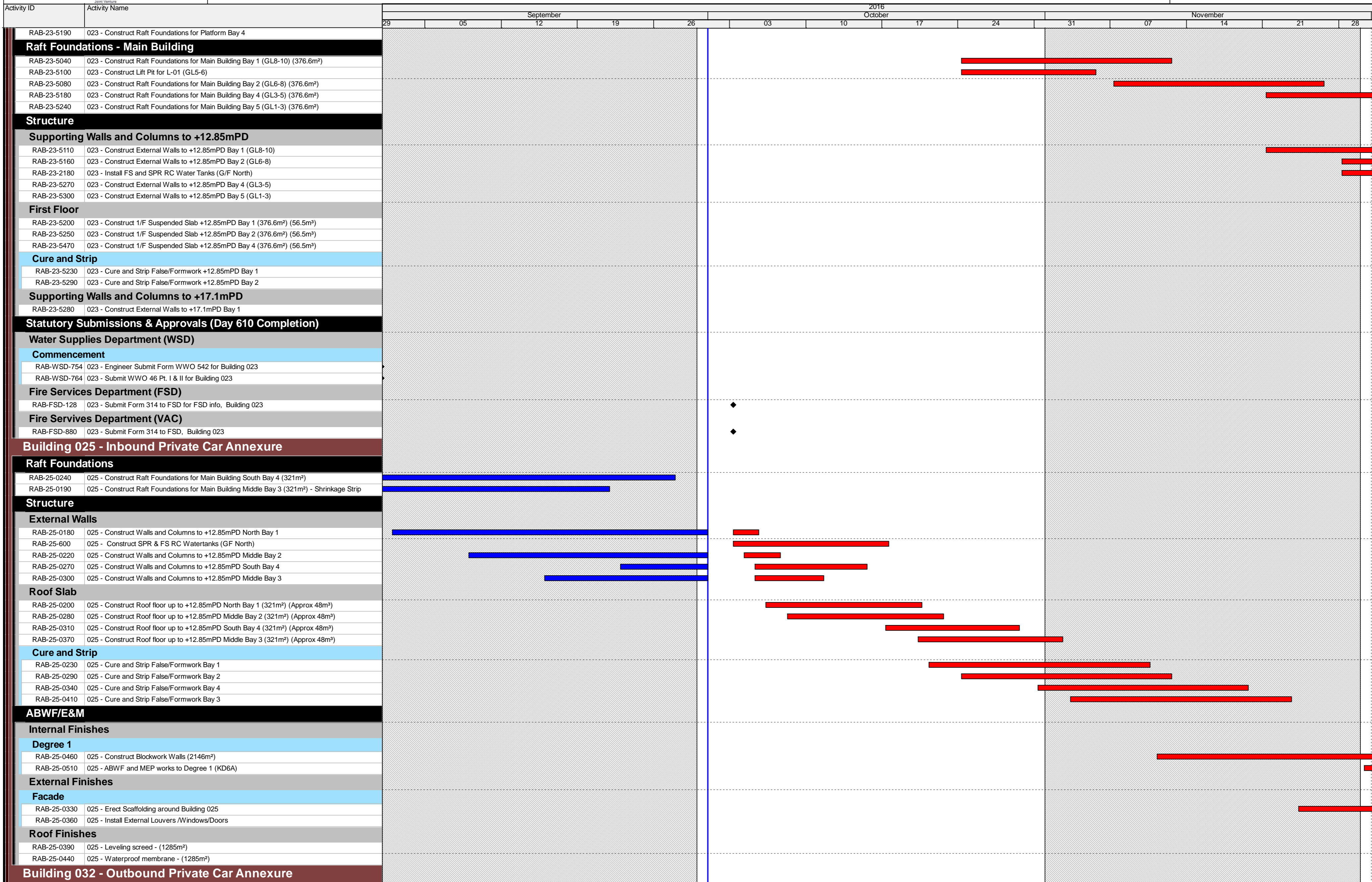


█ Remaining Level of Effort
 █ Actual Work
 █ Critical Remaining Work
█ Actual Work
 █ Remaining Work
 ◆ Milestone
 ◆ Milestone

3 - MONTH ROLLING PROGRAMME , SEP. to NOV 2016

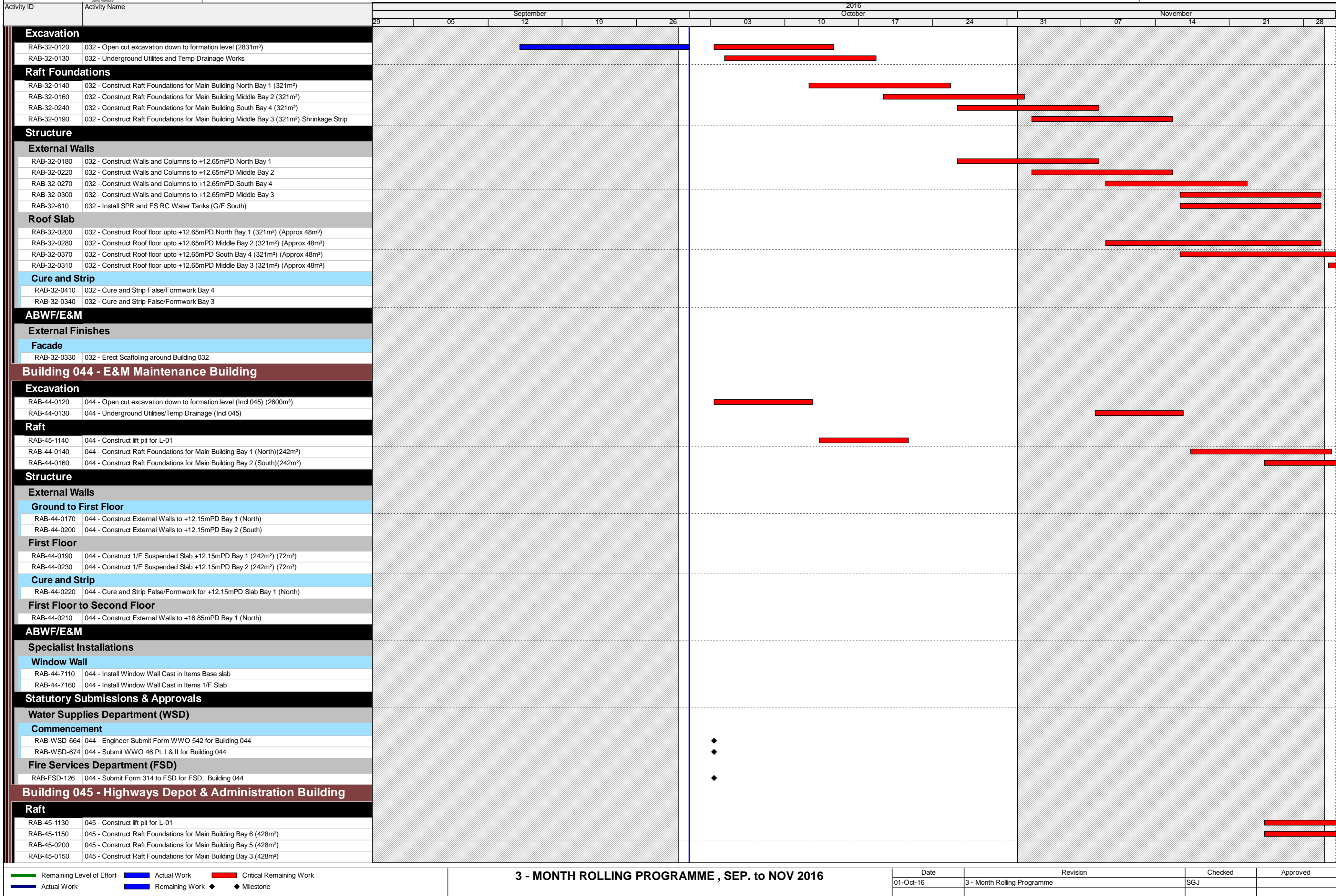
Date	Revision	Checked	Approved
01-Oct-16	3 - Month Rolling Programme	SGJ	



█ Remaining Level of Effort
 █ Actual Work
 █ Critical Remaining Work
█ Actual Work
 █ Remaining Work
 ◆ Milestone
 ◆ Milestone

3 - MONTH ROLLING PROGRAMME , SEP. to NOV 2016

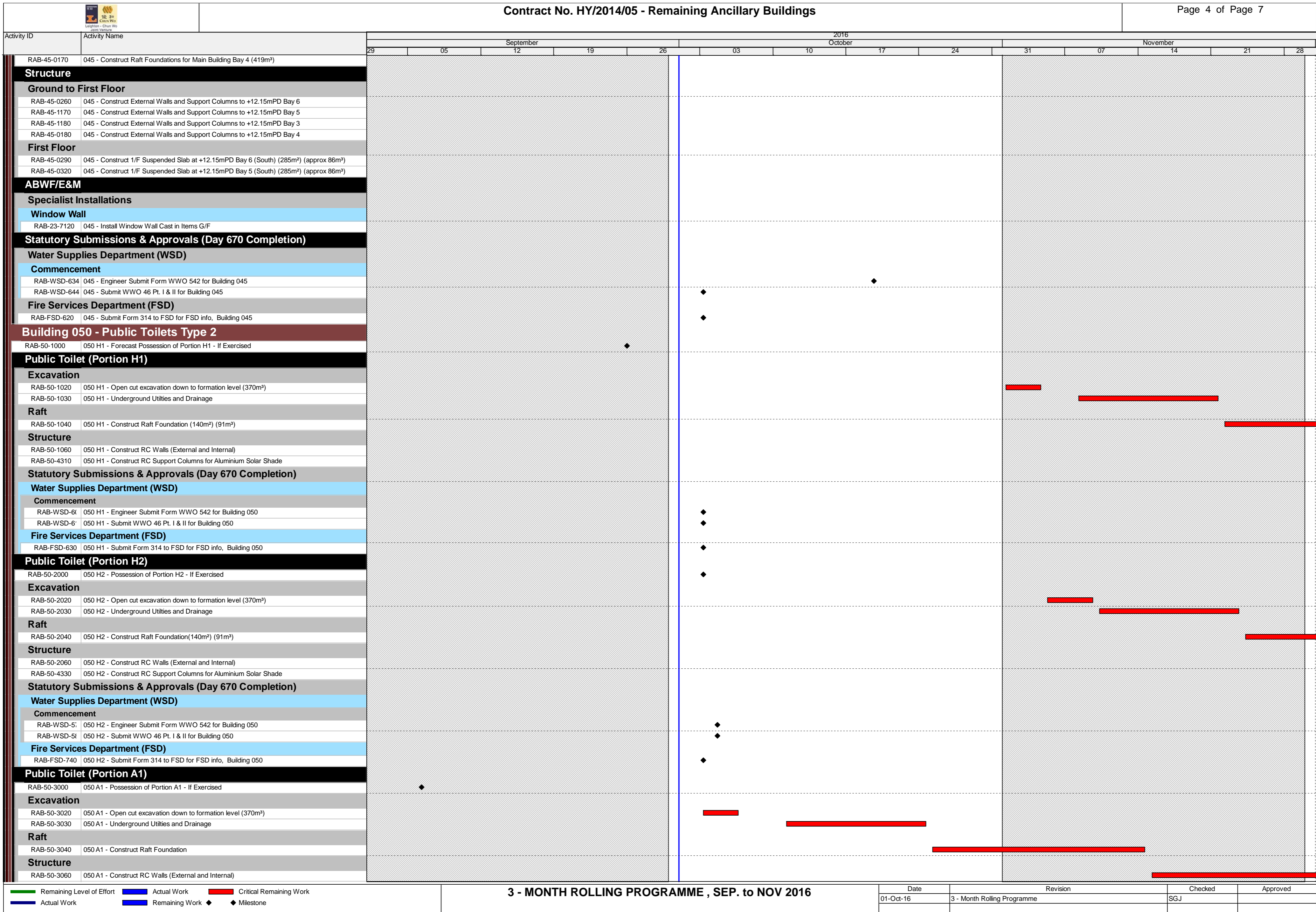
Date	Revision	Checked	Approved
01-Oct-16	3 - Month Rolling Programme	SGJ	



█ Remaining Level of Effort
 █ Actual Work
 █ Critical Remaining Work
█ Actual Work
 █ Remaining Work
 ◆ ◆ Milestone

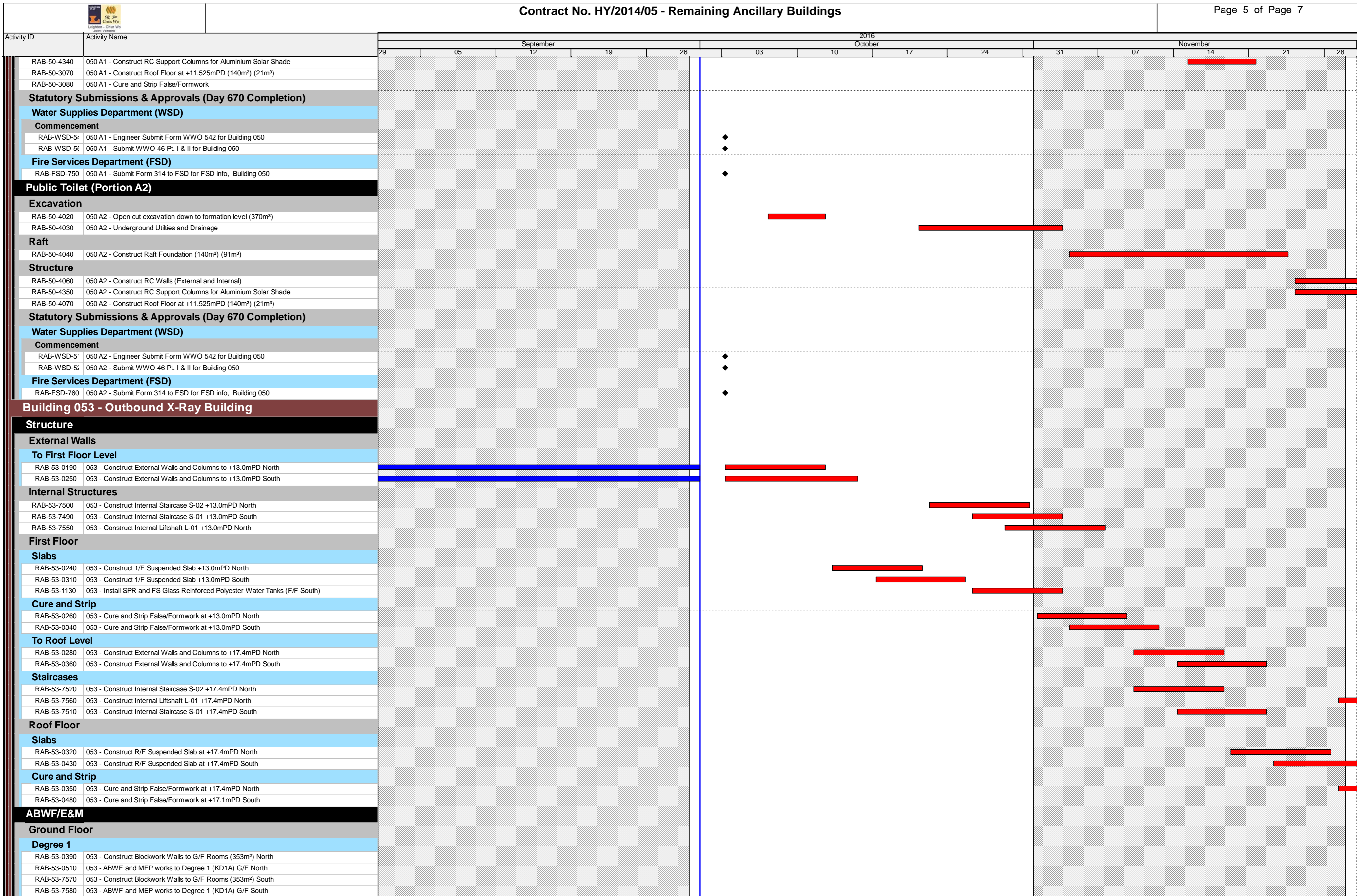
3 - MONTH ROLLING PROGRAMME , SEP. to NOV 2016

Date	Revision	Checked	Approved
01-Oct-16	3 - Month Rolling Programme	SGJ	



█ Remaining Level of Effort
 █ Actual Work
 █ Critical Remaining Work
█ Actual Work
 █ Remaining Work
 ◆ Milestone
 ◆ Milestone

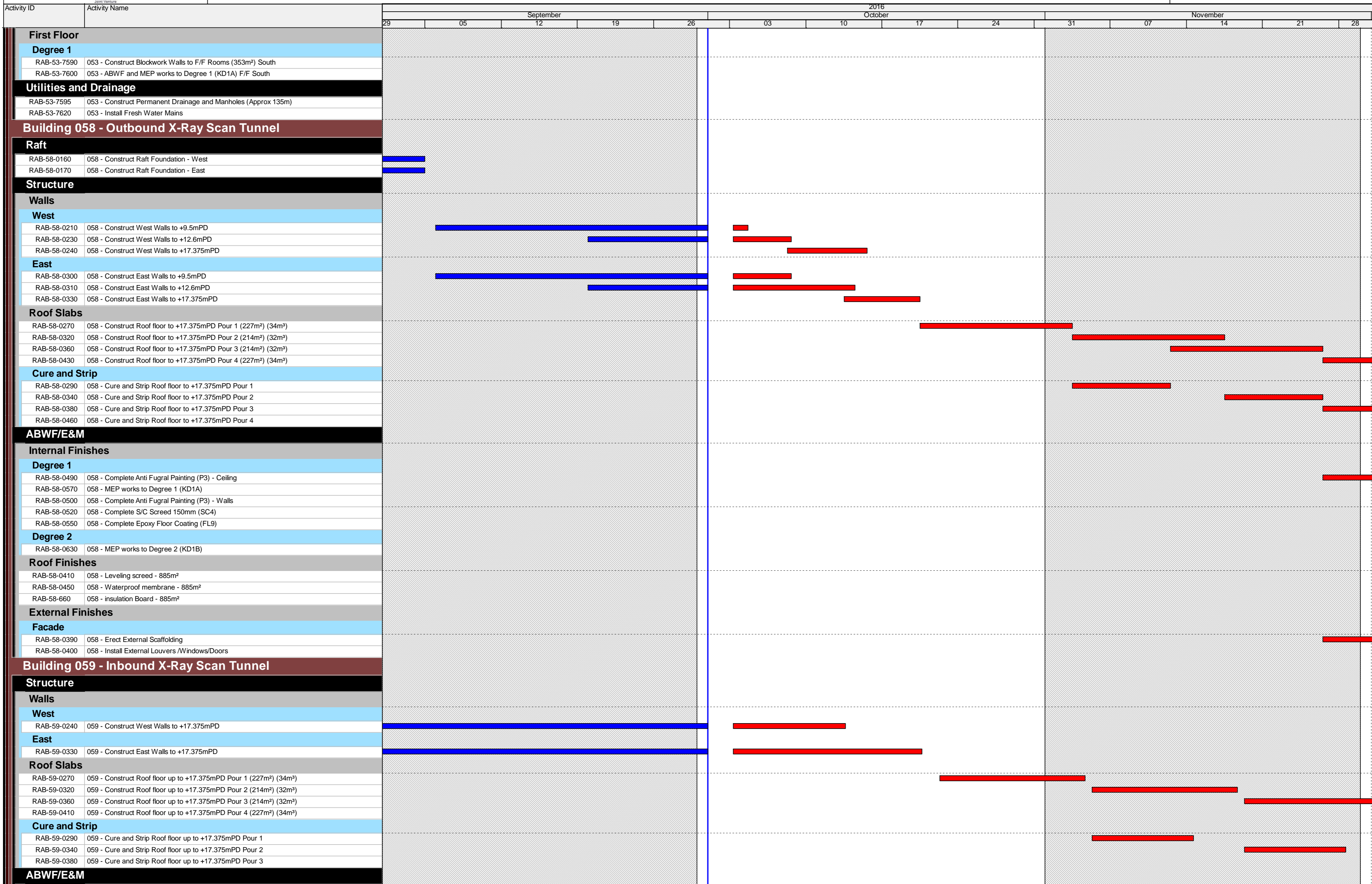
Date	Revision	Checked	Approved
01-Oct-16	3 - Month Rolling Programme	SGJ	



█ Remaining Level of Effort
 █ Actual Work
 █ Critical Remaining Work
█ Actual Work
 █ Remaining Work
 ◆ Milestone
 ◆ Milestone

3 - MONTH ROLLING PROGRAMME , SEP. to NOV 2016

Date	Revision	Checked	Approved
01-Oct-16	3 - Month Rolling Programme	SGJ	



█ Remaining Level of Effort
 █ Actual Work
 █ Critical Remaining Work
█ Actual Work
 █ Remaining Work
 ◆ Milestone

3 - MONTH ROLLING PROGRAMME , SEP. to NOV 2016

Date	Revision	Checked	Approved
01-Oct-16	3 - Month Rolling Programme	SGJ	



Activity ID	Activity Name	2016													
		September				October				November					
		29	05	12	19	26	03	10	17	24	31	07	14	21	28
External Finishes															
Facade															
RAB-59-0390	059 - Erect External Scaffolding														
RAB-59-0400	059 - Install External Louvers /Windows/Doors														
RAB-59-0430	059 - External Render (630m ²)														