

1-hour TSP Monitoring Result for Hong Kong-Zhuhai-Macao Bridge Hong Kong Boundary Crossing Facilities – Phase 2 and Other Works

AMS2 - Tung Chung Development Pier

Date	Weather Condition	Start Time	1-hour TSP ($\mu\text{g}/\text{m}^3$)			Action Level ($\mu\text{g}/\text{m}^3$)	Limit Level ($\mu\text{g}/\text{m}^3$)
			1st Measurement	2nd Measurement	3rd Measurement		
5-Feb-20	Fine	08:30	79	88	84	374	500
11-Feb-20	Fine	12:11	179	162	166		
17-Feb-20	Fine	11:52	62	73	79		
22-Feb-20	Fine	09:53	103	118	111		
28-Feb-20	Fine	13:17	61	61	63		
		Min	61				
		Max	179				
		Average	99				

AMS3C - Ying Tung Estate Market Rooftop

Date	Weather Condition	Start Time	1-hour TSP ($\mu\text{g}/\text{m}^3$)			Action Level ($\mu\text{g}/\text{m}^3$)	Limit Level ($\mu\text{g}/\text{m}^3$)
			1st Measurement	2nd Measurement	3rd Measurement		
5-Feb-20	Fine	08:42	61	67	69	368	500
11-Feb-20	Fine	11:20	174	180	167		
17-Feb-20	Fine	12:20	68	72	65		
22-Feb-20	Fine	10:07	90	86	77		
28-Feb-20	Fine	13:34	53	70	64		
		Min	53				
		Max	180				
		Average	91				

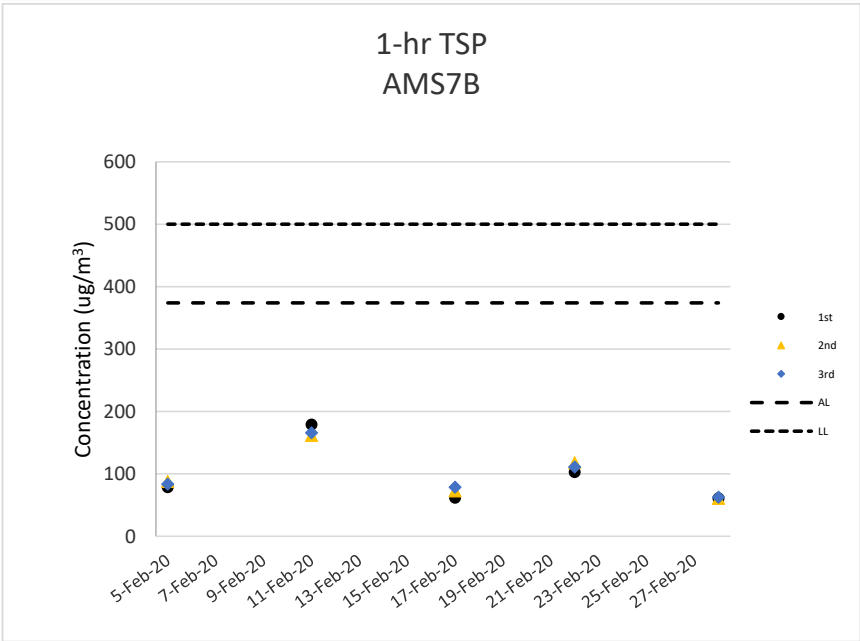
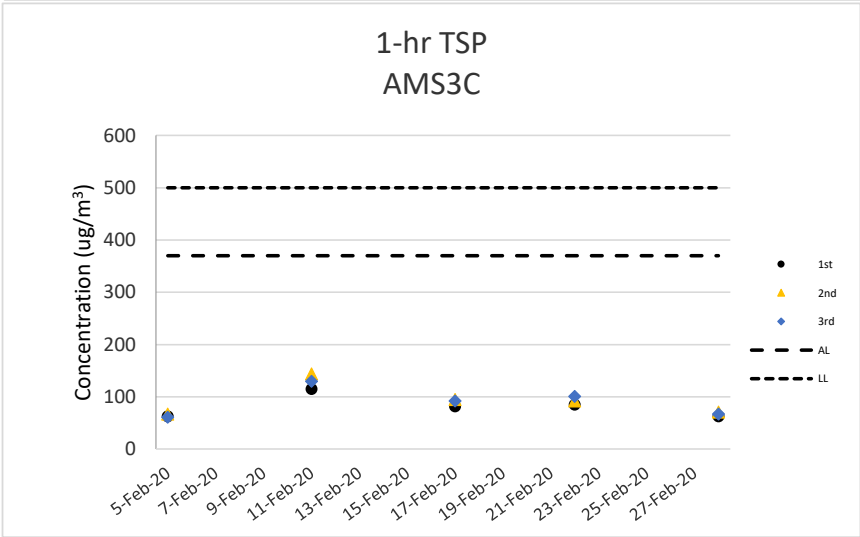
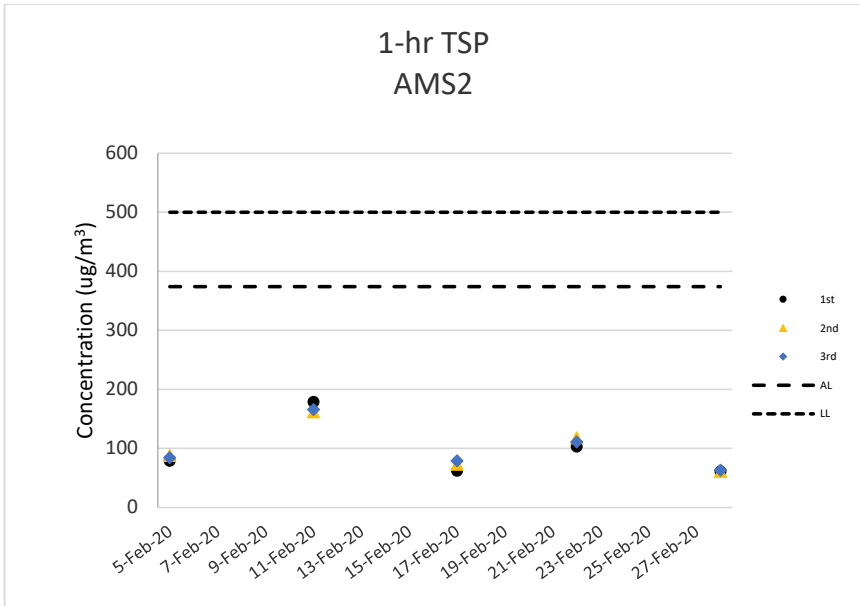
AMS7B - 3RS Site Offices

Date	Weather Condition	Start Time	1-hour TSP ($\mu\text{g}/\text{m}^3$)			Action Level ($\mu\text{g}/\text{m}^3$)	Limit Level ($\mu\text{g}/\text{m}^3$)
			1st Measurement	2nd Measurement	3rd Measurement		
5-Feb-20	Fine	09:00	63	67	61	370	500
11-Feb-20	Fine	11:48	115	144	130		
17-Feb-20	Fine	11:36	82	95	92		
22-Feb-20	Fine	09:33	85	92	101		
28-Feb-20	Fine	13:02	63	71	67		
		Min	61				
		Max	144				
		Average	89				

Note:

Underline: Exceedance of Action Level

Underline and Bold: Exceedance of Limit Level



**24-hour TSP Monitoring Result for
Hong Kong-Zhuhai-Macao Bridge
Hong Kong Boundary Crossing Facilities – Phase 2 and Other Works**

AMS2 - Tung Chung Development Pier

Start Date	Weather Condition	Air Temperature (K)	Atmospheric Pressure, Pa (mmHg)	Filter Weight (g)		Particulate weight (g)	Sampling Time(hrs)	Flow Rate (m ³ /min.)		Average flow (m ³ /min.)	Total volume (m ³)	Conc. (ug/m ³)	Action Level (ug/m ³)	Limit Level (ug/m ³)
				Initial	Final			Initial	Final					
5-Feb-20	Fine	290.5	765.5	2.7024	2.7605	0.0581	24	1.28	1.25	1.26	1821.5	32	176	260
11-Feb-20	Fine	290.6	765.4	2.7517	2.8698	0.1181	24	1.28	1.25	1.26	1821.2	65		
17-Feb-20	Fine	286.6	769.7	2.7360	2.7759	0.0399	24	1.29	1.25	1.27	1832.7	22		
22-Feb-20	Fine	293.1	769.3	2.7046	2.8474	0.1428	24	1.60	1.57	1.59	2284.1	63		
28-Feb-20	Fine	293.8	763.6	2.7028	2.7695	0.0667	24	1.27	1.25	1.26	1813.4	37		
													Max	65
													Average	44

AMS3C - Ying Tung Estate Market Rooftop

Start Date	Weather Condition	Air Temperature (K)	Atmospheric Pressure, Pa (mmHg)	Filter Weight (g)		Particulate weight (g)	Sampling Time(hrs)	Flow Rate (m ³ /min.)		Average flow (m ³ /min.)	Total volume (m ³)	Conc. (ug/m ³)	Action Level (ug/m ³)	Limit Level (ug/m ³)
				Initial	Final			Initial	Final					
5-Feb-20	Fine	290.5	765.5	2.7062	2.7698	0.0636	24	1.38	1.35	1.36	1961.5	32	167	260
11-Feb-20	Fine	290.6	765.4	2.7279	2.8597	0.1318	24	1.37	1.35	1.36	1961.3	67		
17-Feb-20	Fine	286.6	769.7	2.7313	2.7651	0.0338	24	1.39	1.35	1.37	1972.7	17		
22-Feb-20	Fine	293.1	769.3	2.6945	2.8245	0.1300	24	1.70	1.67	1.68	2422.0	54		
28-Feb-20	Fine	293.8	763.6	2.6731	2.7334	0.0603	24	1.36	1.35	1.36	1953.5	31		
													Max	67
													Average	40

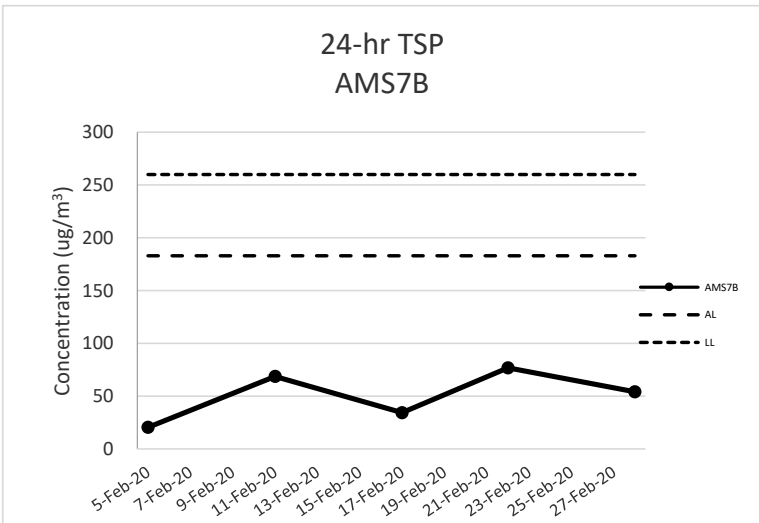
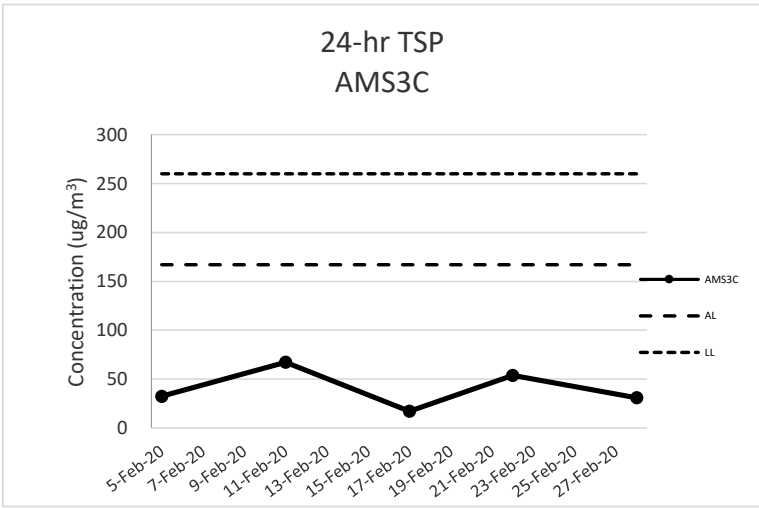
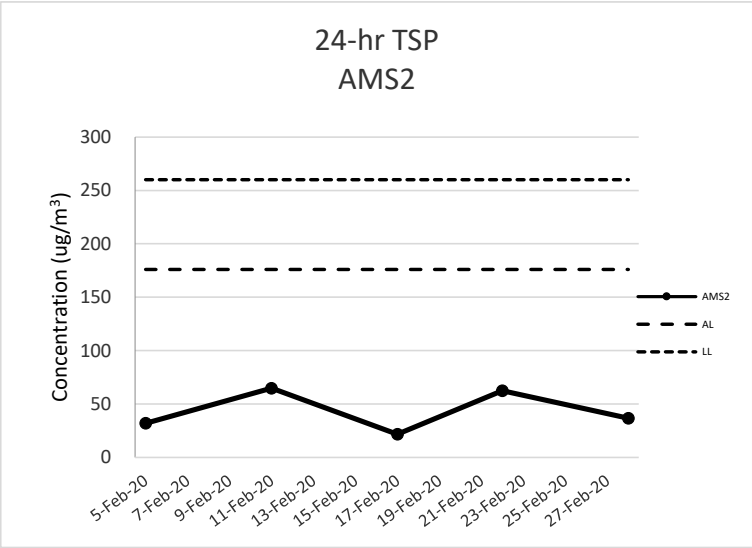
AMS7B - 3RS Site Offices

Start Date	Weather Condition	Air Temperature (K)	Atmospheric Pressure, Pa (mmHg)	Filter Weight (g)		Particulate weight (g)	Sampling Time(hrs)	Flow Rate (m ³ /min.)		Average flow (m ³ /min.)	Total volume (m ³)	Conc. (ug/m ³)	Action Level (ug/m ³)	Limit Level (ug/m ³)
				Initial	Final			Initial	Final					
5-Feb-20	Fine	290.5	765.5	2.7073	2.7529	0.0456	24	1.56	1.54	1.55	2230.3	20	183	260
11-Feb-20	Fine	290.6	765.4	2.7384	2.8917	0.1533	24	1.56	1.54	1.55	2230.1	69		
17-Feb-20	Fine	286.6	769.7	2.7320	2.8088	0.0768	24	1.58	1.54	1.56	2241.6	34		
22-Feb-20	Fine	293.1	769.3	2.6917	2.8778	0.1861	24	1.63	1.74	1.68	2421.9	77		
28-Feb-20	Fine	293.8	763.6	2.6829	2.8136	0.1307	24	1.69	1.67	1.68	2416.3	54		
													Max	77
													Average	51

Note:

Underline: Exceedance of Action Level

Underline and Bold: Exceedance of Limit Level



**Noise Impact Monitoring Result for
Hong Kong-Zhuhai-Macao Bridge
Hong Kong Boundary Crossing Facilities – Phase 2 and Other Works**

NMS2 - Seaview Crescent

Date	Start Time	L _{eq} 30min dB(A)	L ₁₀ dB(A)	L ₉₀ dB(A)	Wind Speed (m/s)	Weather	Limit Level dB(A)
7-Feb-20	12:19	62	66	58	0.2	Fine	75
11-Feb-20	13:25	60	63	56	0.8	Fine	75
17-Feb-20	10:40	63	65	57	0.4	Fine	75
28-Feb-20	14:15	62	64	58	2.5	Fine	75
	Max	63					
	Min	60					

NMS3C - Ying Tung Estate Refuse Collection Point

Date	Start Time	L _{eq} 30min dB(A)	L ₁₀ dB(A)	L ₉₀ dB(A)	Wind Speed (m/s)	Weather	Limit Level dB(A)
7-Feb-20	10:19	64	67	62	0.3	Fine	70
11-Feb-20	10:43	67	70	63	3.2	Fine	70
17-Feb-20	13:41	62	64	60	0.3	Fine	70
28-Feb-20	13:35	66	69	60	0.8	Fine	70
	Max	67					
	Min	62					

Note:

NMS2: Façade Measurement

NMS3C: Free-field measurement (+3dB(A) correction has been applied), reduction to 65dB(A) during school examination periods will be applied.

No raining or wind with speed over 5 m/s was observed during noise monitoring according to the onsite observation.

