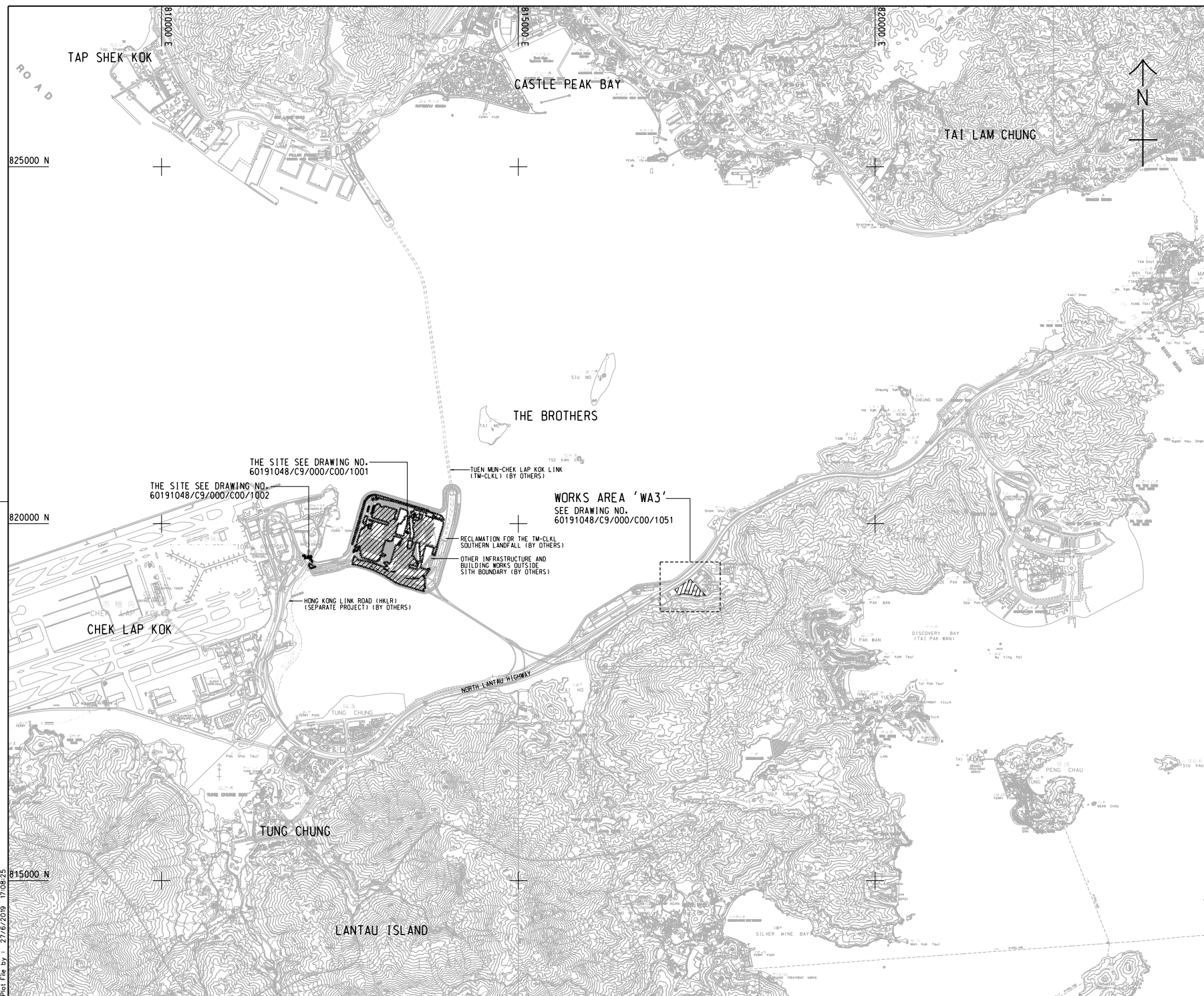


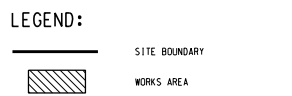
# Figure 1

---

The Site Layout Plan of the Contract



- NOTES:**
- COORDINATES ARE RELATED TO HONG KONG METRIC GRID (1980).
  - DIMENSIONS ARE IN MILLIMETER AND CHAINAGE ARE IN METRES UNLESS OTHERWISE SHOWN.



THE SITE SEE DRAWING NO. 60191048/C9/000/C00/1001

THE SITE SEE DRAWING NO. 60191048/C9/000/C00/1002

WORKS AREA 'WA3'  
SEE DRAWING NO. 60191048/C9/000/C00/1051

TUEN MUN-CHEK LAP KOK LINK (TM-CKLK) (BY OTHERS)

RECLAMATION FOR THE TM-CKLK SOUTHERN LANDFALL (BY OTHERS)

OTHER INFRASTRUCTURE AND BUILDING WORKS OUTSIDE SITE BOUNDARY (BY OTHERS)

HONG KONG LINK ROAD (HKLR) (SEPARATE PROJECT) (BY OTHERS)

REV. NO.	DESCRIPTION	BY	DATE
-	TENDER DRAWING	TTHK	06 JUL 19

**香港高速公路局**  
**HIGHWAYS DEPARTMENT**  
 主要工程管理處 (傳真與函)  
 Major Works Project Management Office (Special Duties)

**HONG KONG-ZHUHAI-MACAO BRIDGE**  
**HONG KONG BOUNDARY CROSSING FACILITIES**  
 - PHASE 2 AND OTHER WORKS

**SITE LOCATION PLAN**

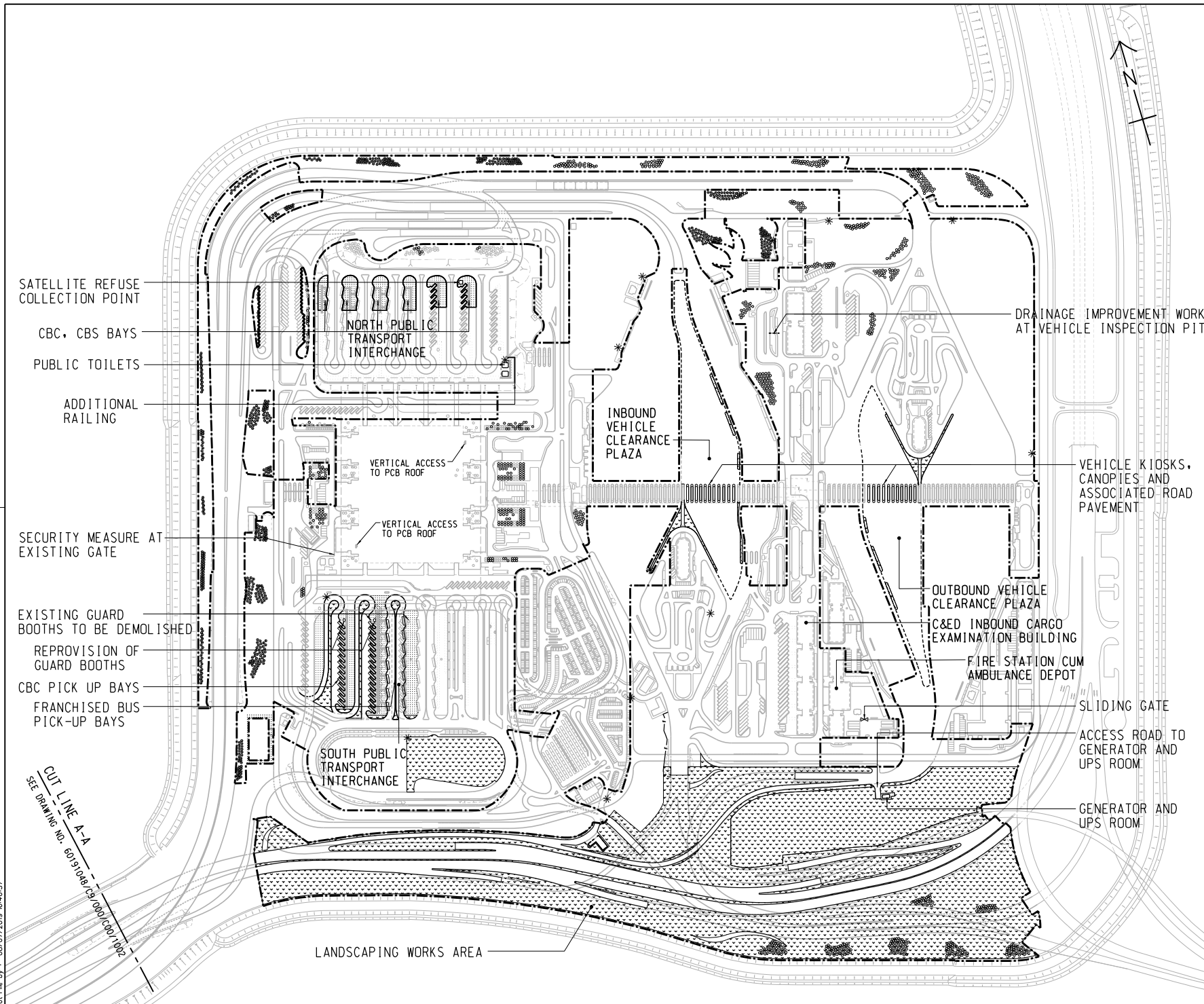
**AECOM** +  
 Rogers Stirk Harbour + Partners  
**Aedas** +  
 BURO HAPPOLD ATKINS ADI +

DRG. NO. 圖紙編號 **60191048/C9/000/C00/1000**

DESIGNED BY 設計	TTHK	CONTRACT NO. 合約編號	HY/2019/01	APPROVED BY 核准	SC1
DRAWN BY 繪圖	JC	STATUS 狀態			
SCALE 比例	A1 1 : 25000				
UNIT OF MEASUREMENT 量度單位	METRES				

© COPYRIGHT RESERVED 版權所有

Plot File by : 27/6/2019 17:08:25



**REMARKS:**

- IN SPT1:
  - DEMOLISH 2 NOS. EXISTING GUARD BOOTHS AND RE-PROVISION TO REVISED LOCATIONS AS SHOWN
  - CONSTRUCT COVERED WALKWAYS FOR THE NEW FB AND CBC PICK UP BAYS
  - MODIFY EXISTING DUCTING AND POLES FOR ELV SYSTEM, ROAD LIGHTING AND PILLAR BOXES, AND THE ASSOCIATED CABLING WORKS
  - RELOCATE AND REINSTATE 3 NOS. OF EXISTING BUS OPERATOR OFFICES AND FOOD TRUCK
  - REPLACEMENT OF DRAWPIT COVERS
- IN NPT1:
  - CONSTRUCT COVERED WALKWAYS FOR THE NEW CBC, CBS PICK UP BAYS AND PUBLIC TOILETS
  - PROVIDE AUTOMATIC IRRIGATION SYSTEM AT SLOPES
  - MODIFY EXISTING COVERED WALKWAY AND PROVISION OF LIGHTING
  - REPLACEMENT OF DRAWPIT COVERS
- LANDSCAPING WORKS AREA:
  - CONSTRUCT IRRIGATION SYSTEM WITH 13 NOS. OF NEW WATER POINT AND THE AUTOMATIC IRRIGATION SYSTEM AND PROVIDE MAINTENANCE WORKS
  - LANDSCAPE SOFTWORK, ESTABLISHMENT AND MAINTENANCE WORKS
  - CONSTRUCT RIVER WASHED STONE SWATHE AND MAINTENANCE WORKS
  - PROTECT EXISTING PLANTING AND HARD STRUCTURES
- PASSENGER CLEARANCE BUILDING
  - VERTICAL ACCESS
  - IMPROVEMENT WORKS FOR WATER FEATURE
  - MINOR REMAINING WORKS
  - PROVISION OF NEW CENTRAL AVSS EQUIPMENT WITH SUFFICIENT CAPACITY, PROCESSING POWER AND STORAGE TO ACCOMMODATE BOTH THE EXISTING AND NEW AVSS
- VEHICLE KIOSKS AT INBOUND & OUTBOUND VCP
  - PROVISION OF AVSS AT NEW KIOSKS TO SERVE 24 NOS. VEHICULAR LANES
  - REPLACEMENT OF BARRIER GATE WITH SKIRTING AT 72 NOS. EXISTING KIOSK
- C&E INBOUND CARGO EXAMINATION BUILDING
  - PROVISION OF NEW CENTRAL AVSS EQUIPMENT WITH SUFFICIENT CAPACITY, PROCESSING POWER AND STORAGE TO ACCOMMODATE BOTH THE EXISTING AND NEW AVSS

**ABBREVIATION:**

SPT1 - SOUTH PUBLIC TRANSPORT INTERCHANGE  
 NPT1 - NORTH PUBLIC TRANSPORT INTERCHANGE  
 VCP - VEHICLE CLEARANCE PLAZA  
 PCB - PASSENGER CLEARANCE BUILDING  
 FB - FRANCHISED BUS  
 CBC - CROSS BOUNDARY COACH  
 CBS - CROSS BOUNDARY SHUTTLE  
 ELV - EXTRA LOW VOLTAGE  
 AVSS - AUTOMATIC VEHICLE CLEARANCE SUPPORT SYSTEM

**NOTE:**

1. THIS DRAWING TO BE READ IN CONJUNCTION WITH DRAWING NOS. 60191048/C9/000/C00/1002

**LEGEND:**

- SITE BOUNDARY
- AMENITY AREA
- FOOTPATH
- COVERED WALKWAY
- SECURITY FENCE
- TREE PLANTING
- IRRIGATION POINT

NO.	DESCRIPTION	DATE
-	TENDER DRAWING	TTHK/000 JUL 19

**HONG KONG HIGHWAYS DEPARTMENT**  
 Major Works Project Management Office (Special Duties)

**HONG KONG-ZHUIHAI-MACAO BRIDGE**  
 HONG KONG BOUNDARY CROSSING FACILITIES  
 PHASE 2 AND OTHER WORKS

**GENERAL ARRANGEMENT**

SHEET 1 OF 2

**AECOM** +  
 Rogers Stirk Harbour + Partners  
 BURO HAPPOLD ATKINS ADI +

**Aedas**

DRGNO 60191048/C9/000/C00/1001  
 圖紙編號

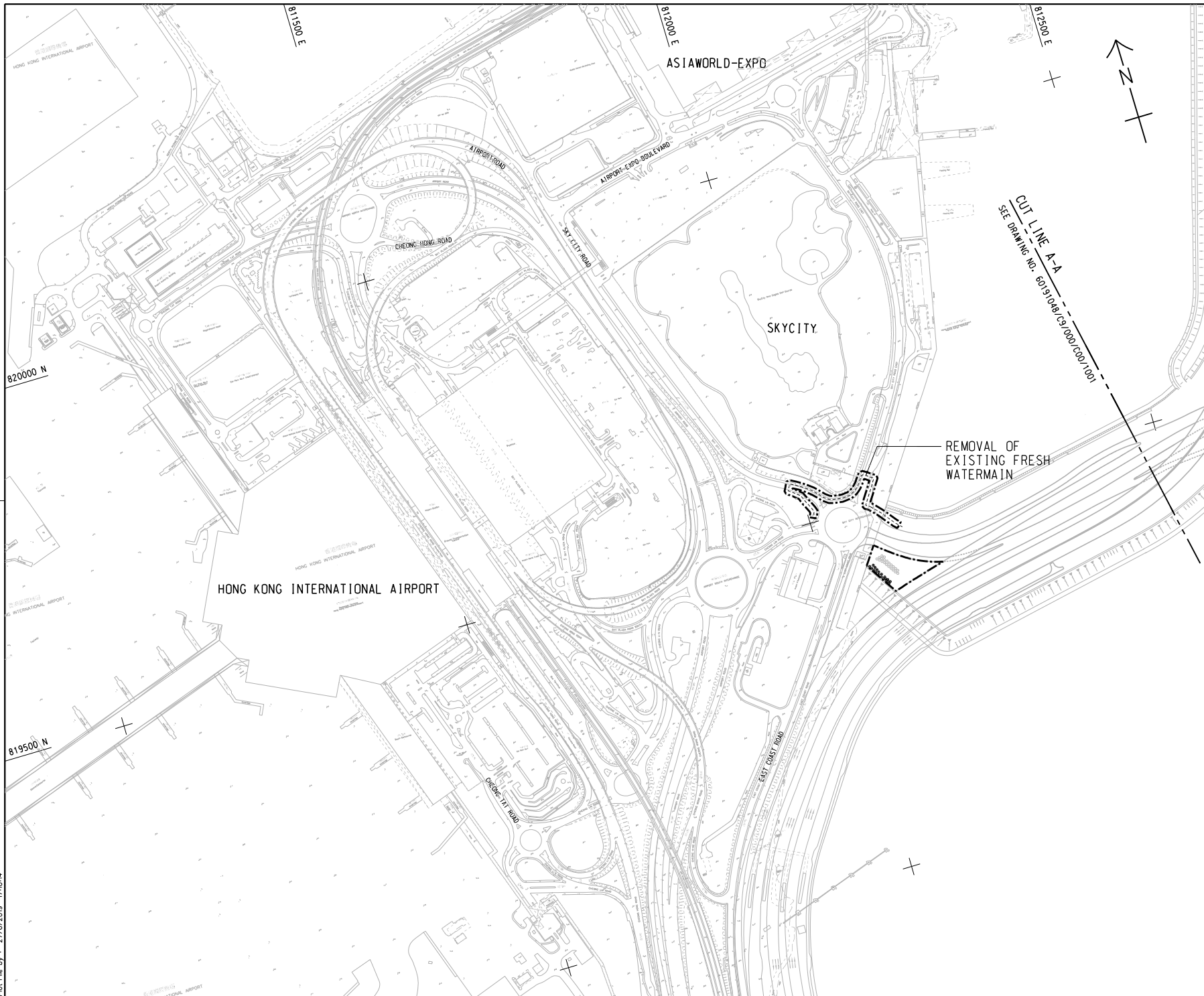
DESIGNED BY TTHK CONTRACT NO. HY/2019/01 P. Dir. APPROVED  
 CHECKED BY JC STATUS  
 SCALE AT 1 : 2500  
 DIMENSIONS ARE IN METRES

© COPYRIGHT RESERVED  
 版權所有

Plot File by : 09/07/2019 B-4657

CUT LINE A-A  
 SEE DRAWING NO. 60191048/C9/000/C00/1002

LANDSCAPING WORKS AREA



**NOTE:**  
 1. THIS DRAWING TO BE READ IN CONJUNCTION WITH DRAWING NOS. 60191048/C9/000/C00/1001.

CUT LINE A-A  
 SEE DRAWING NO. 60191048/C9/000/C00/1001

REV. NO.	DESCRIPTION	DATE
1	TENDER DRAWING	JUL 19

香港路政處  
 HIGHWAYS DEPARTMENT  
 主要工程管理處 (傳真專組)  
 Major Works Project Management Office (Special Duties)

HONG KONG-ZHUHAI-MACAO BRIDGE  
 HONG KONG BOUNDARY CROSSING FACILITIES  
 - PHASE 2 AND OTHER WORKS

GENERAL ARRANGEMENT  
 SHEET 2 OF 2

Rogers Strik Harbour + Partners  

 Aedas  
 BURO HAPPOLD   ATKINS   ADI

DRG. NO. 60191048/C9/000/C00/1002  
 圖紙編號

DESIGNED BY 設計	CONTRACT NO. 合約編號	P. Dir. APPROVED 核准
TTHK	HY/2019/01	SC1 ↓

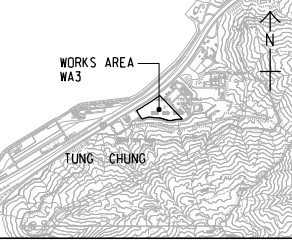
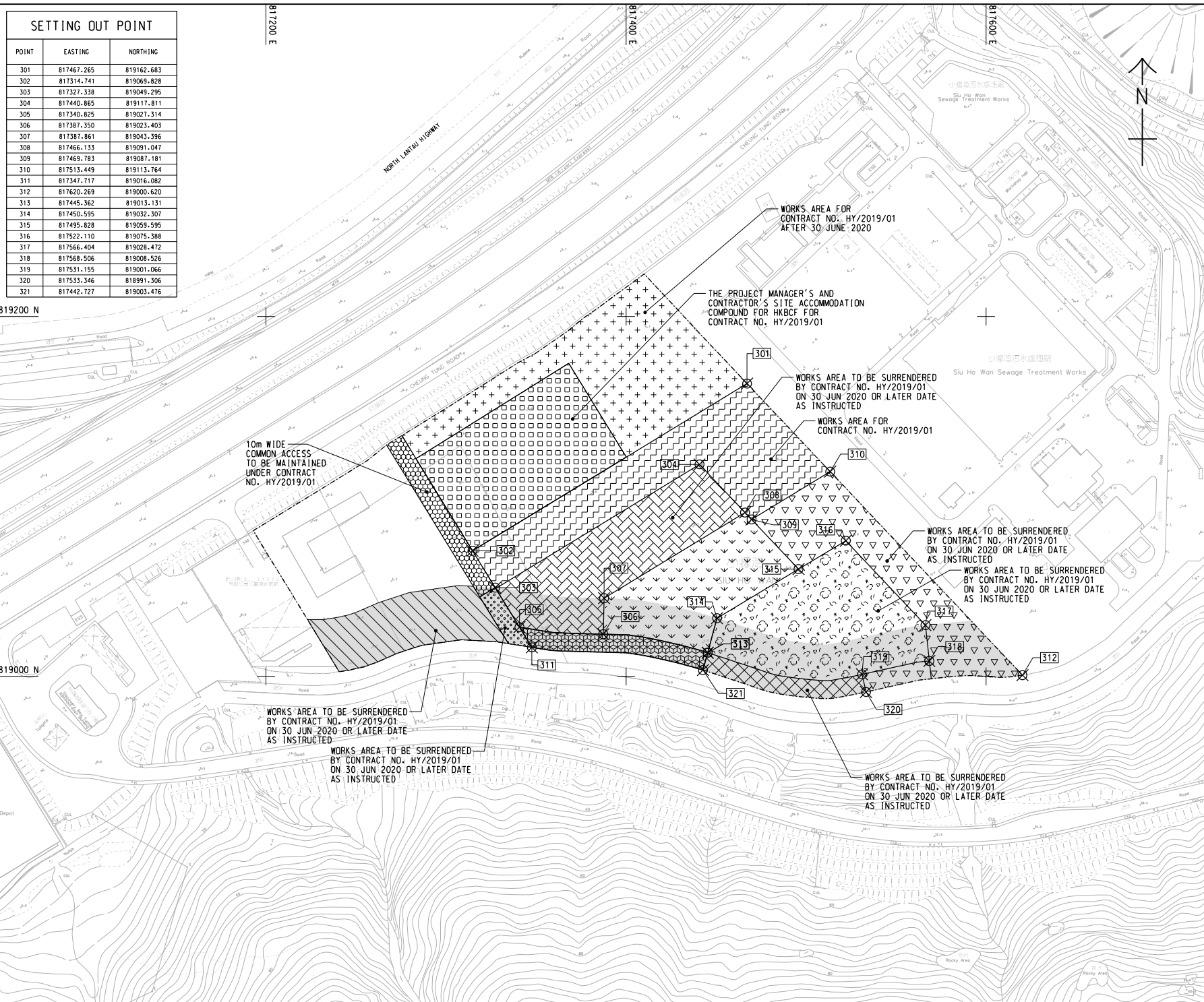
SCALE  
 比例尺  
 A1 1 : 2500  
 DIMENSIONING UNIT IN METRES  
 尺寸單位為公尺

© COPYRIGHT RESERVED  
 版權所有

Plot File by : 27/6/2019 17:02:4



SETTING OUT POINT		
POINT	EASTING	NORTHING
301	817467.265	819162.683
302	817314.741	819069.828
303	817327.338	819049.295
304	817440.865	819117.811
305	817340.825	819027.314
306	817387.350	819023.403
307	817387.861	819043.396
308	817466.133	819091.047
309	817469.783	819087.181
310	817513.449	819113.764
311	817347.717	819016.082
312	817620.269	819000.620
313	817445.362	819013.131
314	817450.595	819032.307
315	817495.828	819059.595
316	817522.110	819075.388
317	817566.404	819028.472
318	817568.506	819008.526
319	817531.155	819001.066
320	817533.346	818991.306
321	817442.727	819003.476



LOCATION PLAN  
SCALE 1 : 25000

NOTES:  
 1. COORDINATES ARE RELATED TO HONG KONG METRIC GRID (1980).  
 2. DIMENSIONS ARE IN MILLIMETER AND CHAINAGE ARE IN METRES UNLESS OTHERWISE SHOWN.

LEGEND:

	WORKS AREA BOUNDARY
	PORTION 3.1
	PORTION 3.2
	PORTION 3.3
	PORTION 3.4
	PORTION 3.5
	PORTION 3.6
	PORTION 3.7
	PORTION 3.8
	PORTION 3.9
	PORTION 3.10
	PORTION 3.11
	PORTION 3.12
	NON-BUILDING AREA 8200m <sup>2</sup> (WHOLE)

REV. NO.	DESCRIPTION	DATE
1	TENDER DRAWING	TTHK 06/2019

HIGHWAYS DEPARTMENT  
 Major Works Project Management Office (Special Duties)  
 HONG KONG-ZHUSHI-MACAO BRIDGE  
 HONG KONG BOUNDARY CROSSING FACILITIES  
 - PHASE 2 AND OTHER WORKS

WORKS AREA WA3

**AECOM** +  
 Rogers Stirk Harbour + Partners  
 BURO HAPPOLD ATKINS ADI +  
**Aedas**

DRGNO. 60191048/C9/000/C00/1051  
 圖紙編號

DESIGNED BY TTHK	CONTRACT NO. HY/2019/01	P. Dir. APPROVED SCL
DRAWN BY JC	STATUS REV	

SCALE: 1 : 1000  
 DIMENSIONS ARE IN METRES  
 © COPYRIGHT RESERVED  
 版權所有

Plot File by : 2019/06/29 9:34:39