

Annex I. HKLR03 Survey Effort Database (February 2013)

(Abbreviations: BEAU = Beaufort Sea State; P = Primary Line Effort; S = Secondary Line Effort)

DATE	AREA	BEAU	EFFORT	SEASON	VESSEL	TYPE	P/S
1-Feb-13	NW LAUTAU	1	6.2	WINTER	STANDARD31516	HKLR	P
1-Feb-13	NW LAUTAU	2	29.7	WINTER	STANDARD31516	HKLR	P
1-Feb-13	NW LAUTAU	3	3.7	WINTER	STANDARD31516	HKLR	P
1-Feb-13	NW LAUTAU	2	12.8	WINTER	STANDARD31516	HKLR	S
1-Feb-13	NE LANTAU	1	9.1	WINTER	STANDARD31516	HKLR	P
1-Feb-13	NE LANTAU	2	9.5	WINTER	STANDARD31516	HKLR	P
1-Feb-13	NE LANTAU	1	3.4	WINTER	STANDARD31516	HKLR	S
1-Feb-13	NE LANTAU	2	5.4	WINTER	STANDARD31516	HKLR	S
6-Feb-13	NE LANTAU	1	10.9	WINTER	STANDARD31516	HKLR	P
6-Feb-13	NE LANTAU	2	9.9	WINTER	STANDARD31516	HKLR	P
6-Feb-13	NE LANTAU	1	5.5	WINTER	STANDARD31516	HKLR	S
6-Feb-13	NE LANTAU	2	5.1	WINTER	STANDARD31516	HKLR	S
6-Feb-13	NW LANTAU	1	3.3	WINTER	STANDARD31516	HKLR	P
6-Feb-13	NW LANTAU	2	17.9	WINTER	STANDARD31516	HKLR	P
6-Feb-13	NW LANTAU	3	10.1	WINTER	STANDARD31516	HKLR	P
6-Feb-13	NW LANTAU	1	1.8	WINTER	STANDARD31516	HKLR	S
6-Feb-13	NW LANTAU	2	4.3	WINTER	STANDARD31516	HKLR	S
18-Feb-13	NE LANTAU	1	11.6	WINTER	STANDARD31516	HKLR	P
18-Feb-13	NE LANTAU	2	4.7	WINTER	STANDARD31516	HKLR	P
18-Feb-13	NE LANTAU	3	1.7	WINTER	STANDARD31516	HKLR	P
18-Feb-13	NE LANTAU	1	8.7	WINTER	STANDARD31516	HKLR	S
18-Feb-13	NE LANTAU	2	1.1	WINTER	STANDARD31516	HKLR	S
18-Feb-13	NW LANTAU	1	1.3	WINTER	STANDARD31516	HKLR	P
18-Feb-13	NW LANTAU	2	40.1	WINTER	STANDARD31516	HKLR	P
18-Feb-13	NW LANTAU	1	2.5	WINTER	STANDARD31516	HKLR	S
18-Feb-13	NW LANTAU	2	10.5	WINTER	STANDARD31516	HKLR	S
20-Feb-13	NW LANTAU	2	24.0	WINTER	STANDARD31516	HKLR	P
20-Feb-13	NW LANTAU	3	10.1	WINTER	STANDARD31516	HKLR	P
20-Feb-13	NW LANTAU	2	6.7	WINTER	STANDARD31516	HKLR	S
20-Feb-13	NE LANTAU	1	3.9	WINTER	STANDARD31516	HKLR	P
20-Feb-13	NE LANTAU	2	16.8	WINTER	STANDARD31516	HKLR	P
20-Feb-13	NE LANTAU	1	1.9	WINTER	STANDARD31516	HKLR	S
20-Feb-13	NE LANTAU	2	8.5	WINTER	STANDARD31516	HKLR	S

Annex II. HKLR03 Chinese White Dolphin Sighting Database (February 2013)

(Abbreviations: STG# = Sighting Number; HRD SZ = Dolphin Herd Size; BEAU = Beaufort Sea State; PSD = Perpendicular Distance; BOAT ASSOC. = Fishing Boat Association; P/S: Sighting Made on Primary/Secondary Line§)

DATE	STG #	TIME	HRD SZ	AREA	BEAU	PSD	EFFORT	TYPE	NORTHING	EASTING	SEASON	BOAT ASSOC.	P/S
01-Feb-13	1	1049	3	NW LANTAU	2	148	ON	HKLR	824207	804659	WINTER	NONE	P
01-Feb-13	2	1057	6	NW LANTAU	2	ND	OFF	HKLR	825038	804455	WINTER	NONE	N/A
01-Feb-13	3	1159	4	NW LANTAU	2	368	ON	HKLR	827647	806458	WINTER	NONE	P
01-Feb-13	4	1222	4	NW LANTAU	2	273	ON	HKLR	827215	806457	WINTER	NONE	P
01-Feb-13	5	1241	7	NW LANTAU	2	626	ON	HKLR	825676	806464	WINTER	NONE	P
01-Feb-13	6	1258	9	NW LANTAU	2	318	ON	HKLR	824679	806473	WINTER	NONE	P
01-Feb-13	7	1322	6	NW LANTAU	2	95	ON	HKLR	823274	806048	WINTER	NONE	S
01-Feb-13	8	1337	3	NW LANTAU	1	502	ON	HKLR	820560	806465	WINTER	NONE	P
01-Feb-13	9	1401	2	NW LANTAU	2	603	ON	HKLR	821962	808507	WINTER	NONE	P
01-Feb-13	10	1503	3	NW LANTAU	2	153	ON	HKLR	822180	810506	WINTER	NONE	P
01-Feb-13	11	1700	1	NE LANTAU	1	98	ON	HKLR	822147	818573	WINTER	NONE	P
06-Feb-13	1	1334	5	NW LANTAU	2	21	ON	HKLR	823769	807522	WINTER	NONE	P
06-Feb-13	2	1353	2	NW LANTAU	2	467	ON	HKLR	826527	807537	WINTER	NONE	P
06-Feb-13	3	1508	3	NW LANTAU	3	32	ON	HKLR	821813	805437	WINTER	NONE	P
18-Feb-13	1	1213	1	NW LANTAU	2	53	ON	HKLR	820861	811194	WINTER	NONE	S
18-Feb-13	2	1445	1	NW LANTAU	2	14	ON	HKLR	831028	804694	WINTER	NONE	P
18-Feb-13	3	1514	2	NW LANTAU	2	63	ON	HKLR	825296	804661	WINTER	NONE	P
18-Feb-13	4	1525	5	NW LANTAU	2	133	ON	HKLR	823243	804667	WINTER	NONE	P
20-Feb-13	1	1052	1	NW LANTAU	3	193	ON	HKLR	824471	805453	WINTER	NONE	P
20-Feb-13	2	1122	2	NW LANTAU	2	182	ON	HKLR	828646	805461	WINTER	NONE	P

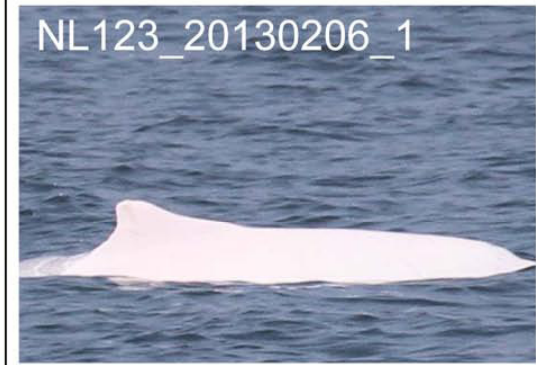
Annex III. Individual dolphins identified during HKLR03 monitoring surveys in February 2013

ID#	DATE	STG#	AREA
CH34	1/2/2013	5	NW LANTAU
CH98	20/2/2013	1	NW LANTAU
NL24	18/2/2013	4	NW LANTAU
NL104	18/2/2013	4	NW LANTAU
NL112	18/2/2013	2	NW LANTAU
NL118	1/2/2013	4	NW LANTAU
NL123	6/2/2013	1	NW LANTAU
NL136	6/2/2013	3	NW LANTAU
NL139	6/2/2013	3	NW LANTAU
NL156	18/2/2013	4	NW LANTAU
NL165	1/2/2013	5	NW LANTAU
	6/2/2013	3	NW LANTAU
NL179	1/2/2013	5	NW LANTAU
NL182	6/2/2013	1	NW LANTAU
NL191	20/2/2013	2	NW LANTAU
NL202	18/2/2013	3	NW LANTAU
NL210	20/2/2013	2	NW LANTAU
NL212	1/2/2013	1	NW LANTAU
NL220	18/2/2013	4	NW LANTAU
NL226	18/2/2013	4	NW LANTAU
NL246	1/2/2013	5	NW LANTAU
NL259	18/2/2013	4	NW LANTAU
NL260	1/2/2013	6	NW LANTAU
NL278	1/2/2013	6	NW LANTAU
	1/2/2013	7	NW LANTAU
NL284	6/2/2013	1	NW LANTAU
NL285	6/2/2013	1	NW LANTAU
NL286	1/2/2013	3	NW LANTAU
	18/2/2013	3	NW LANTAU
NL296	1/2/2013	6	NW LANTAU
WL28	1/2/2013	2	NW LANTAU
WL46	1/2/2013	2	NW LANTAU
WL179	1/2/2013	1	NW LANTAU

*Annex IV: Photographs of Identified
Individual Dolphins in February 2013
(HKLR03)*



Annex IV: Photographs of Identified Individual Dolphins in February 2013 (HKLR03)



Annex IV (cont'd).



Annex IV (cont'd).



Annex IV (cont'd).

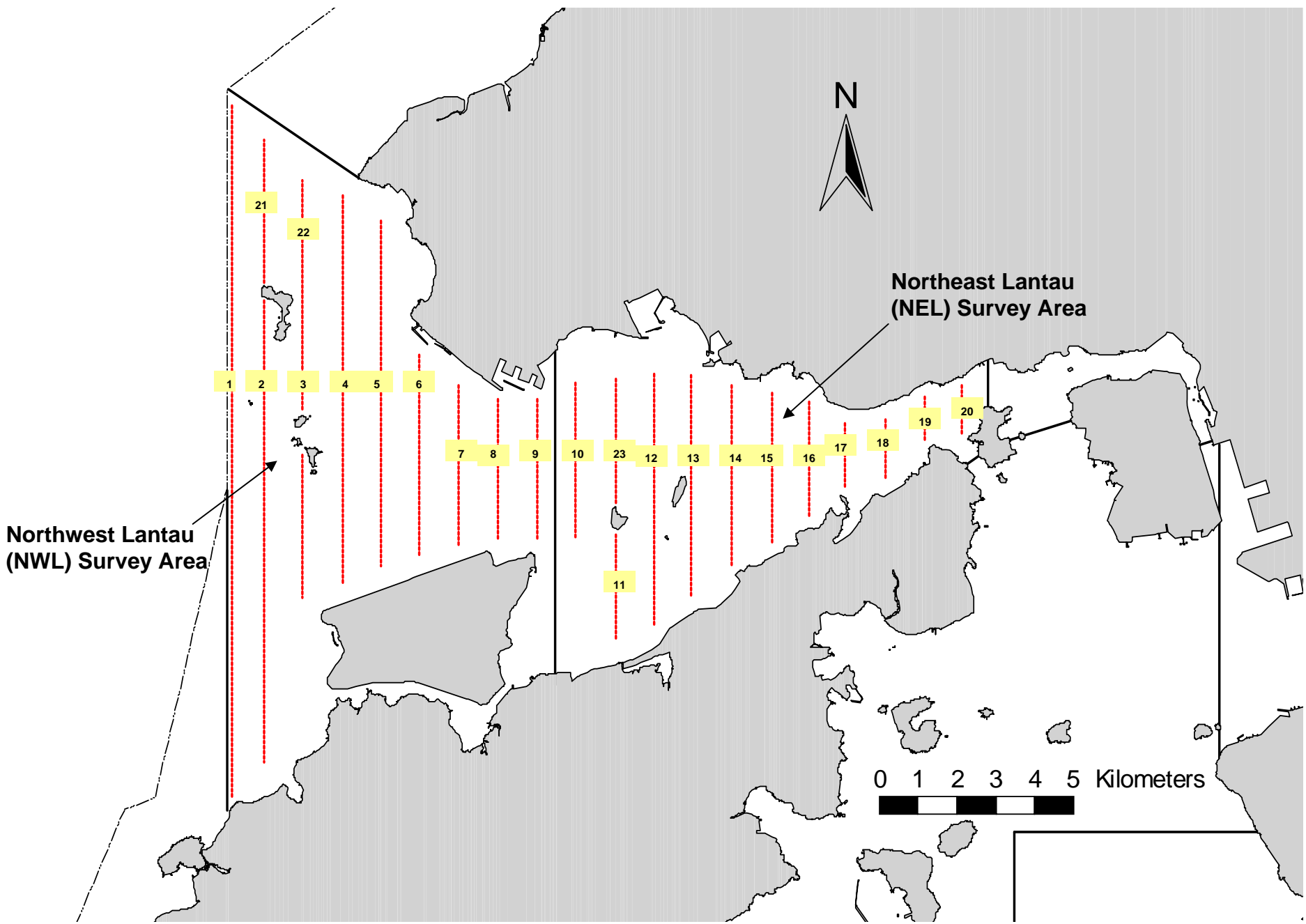


Figure 1. Transect Line Layout in Northwest and Northeast Lantau Survey Areas

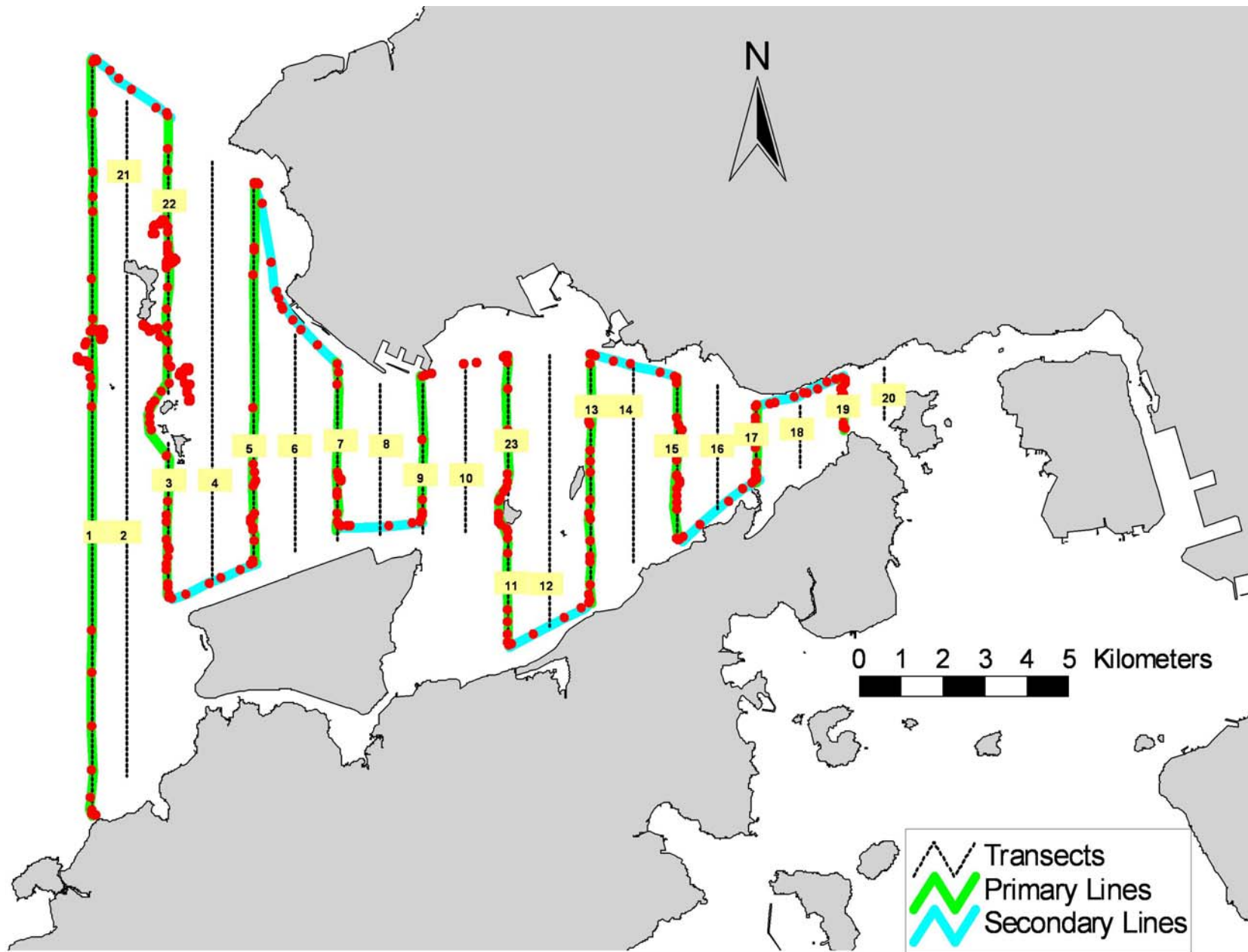


Figure 2. Survey Route on February 1st, 2013

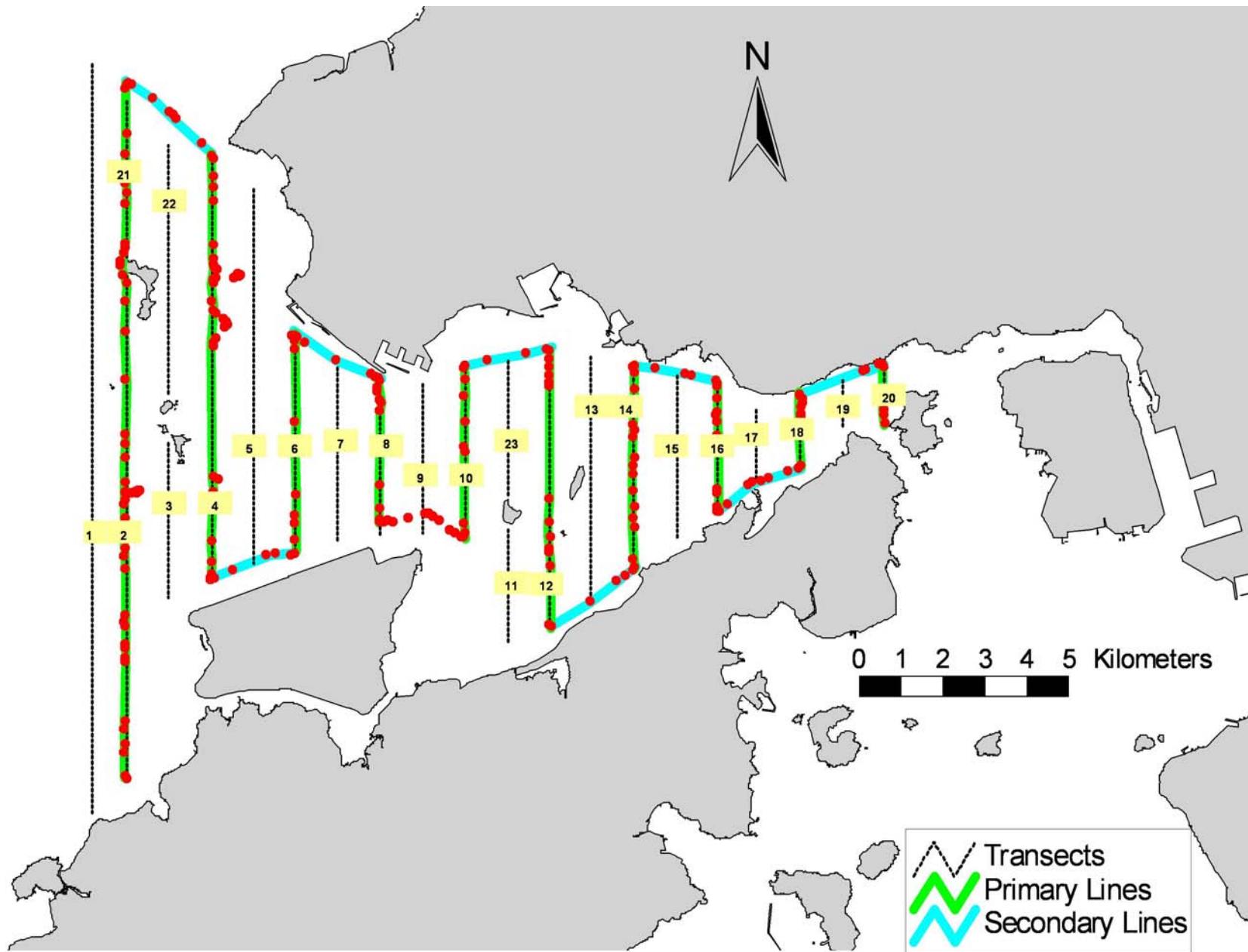


Figure 3. Survey Route on February 6th, 2013

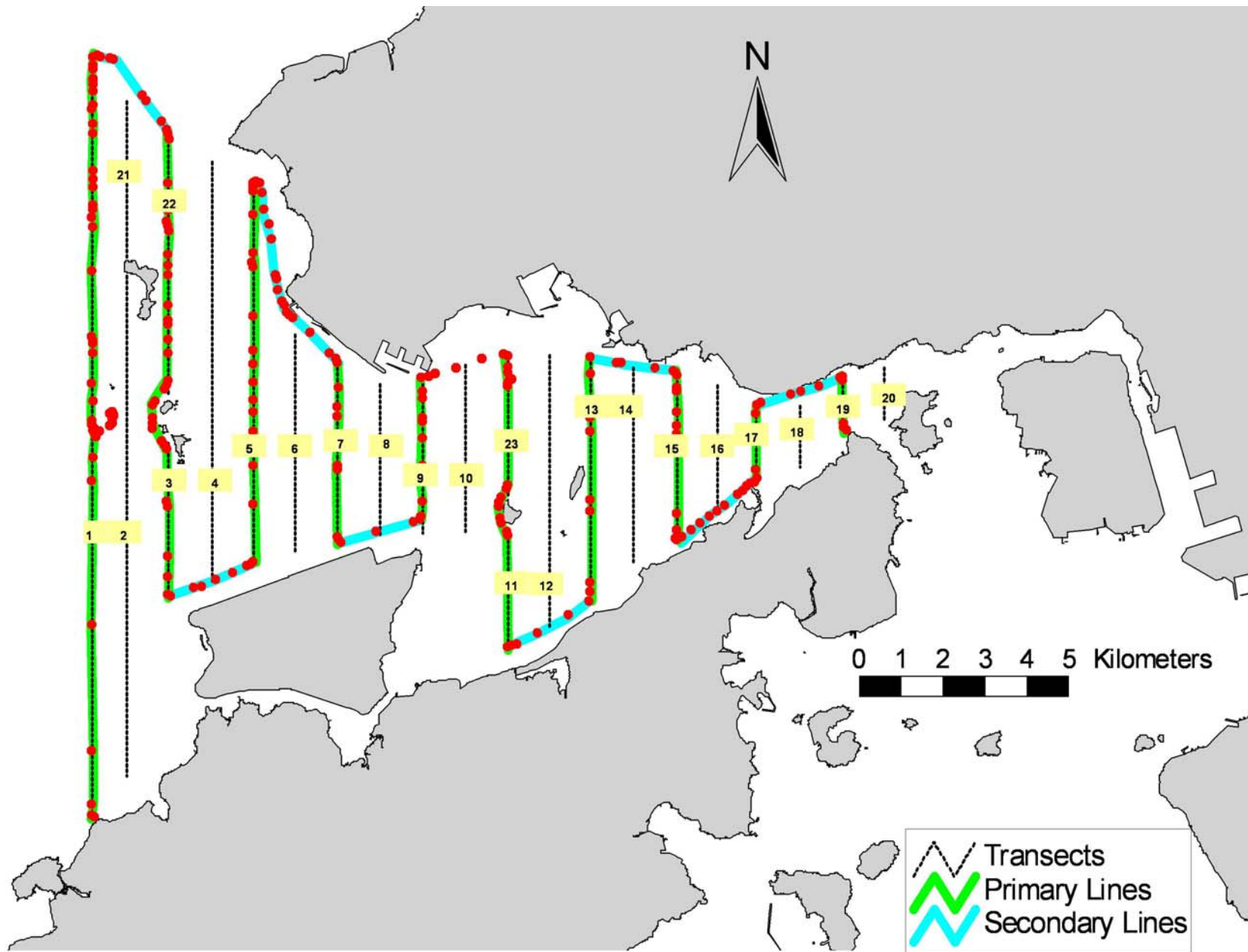


Figure 4. Survey Route on February 18th, 2013

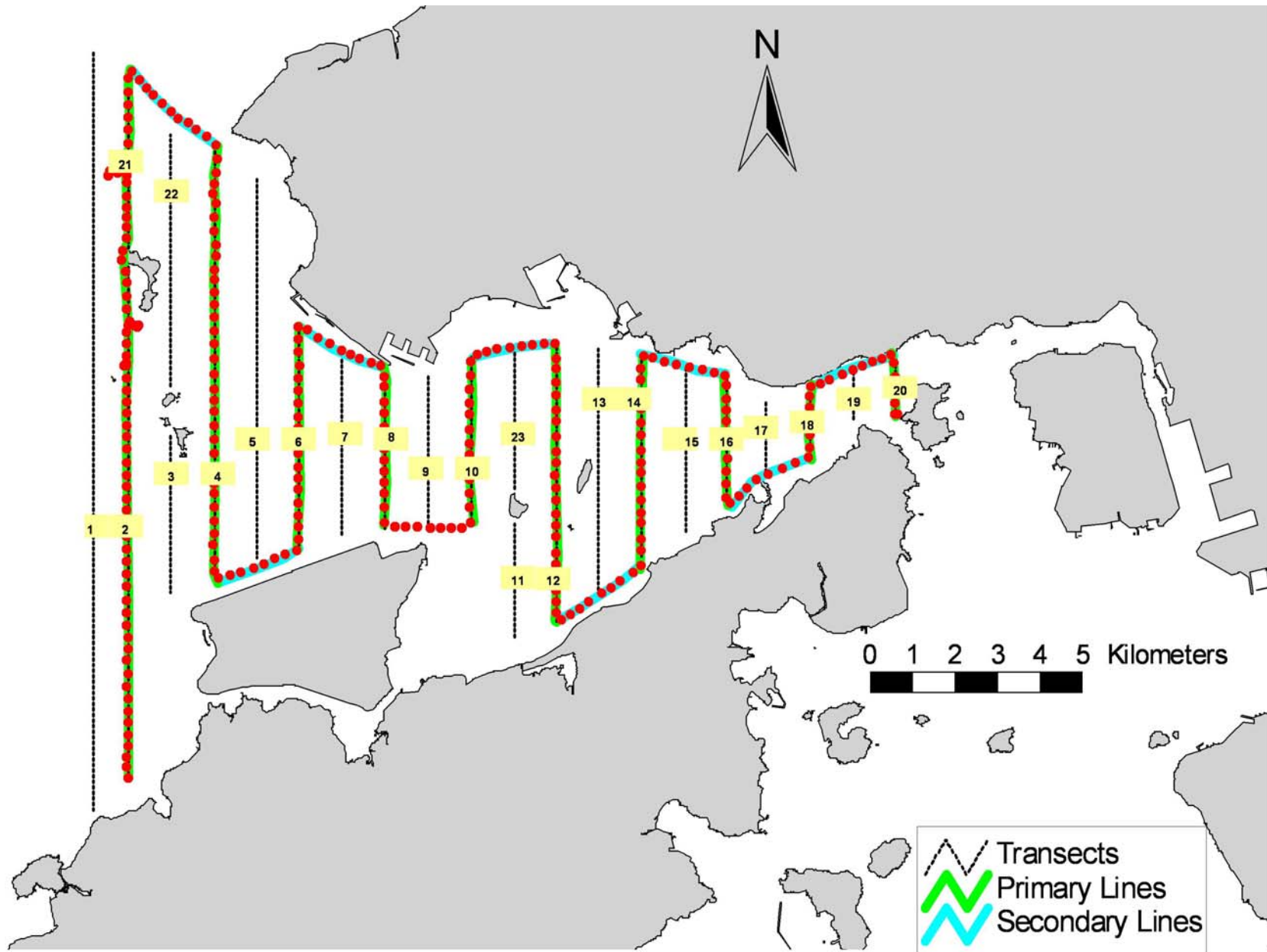


Figure 5. Survey Route on February 20th, 2013

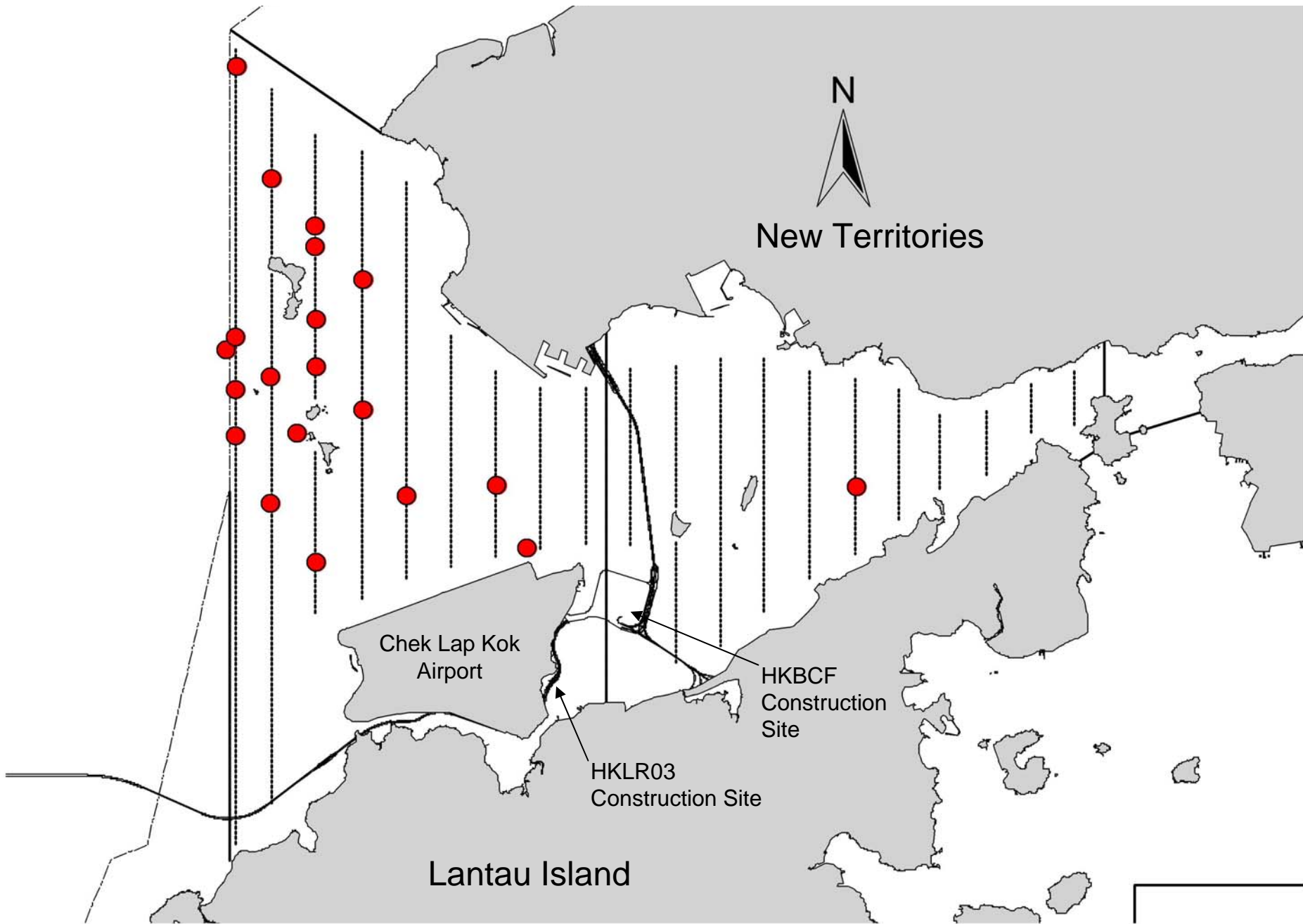


Figure 6. Distribution of Chinese White Dolphin Sightings During February 2013 HKLR03 Monitoring Surveys