

Figure 1. Transect Line Layout in Northwest and Northeast Lantau Survey Areas

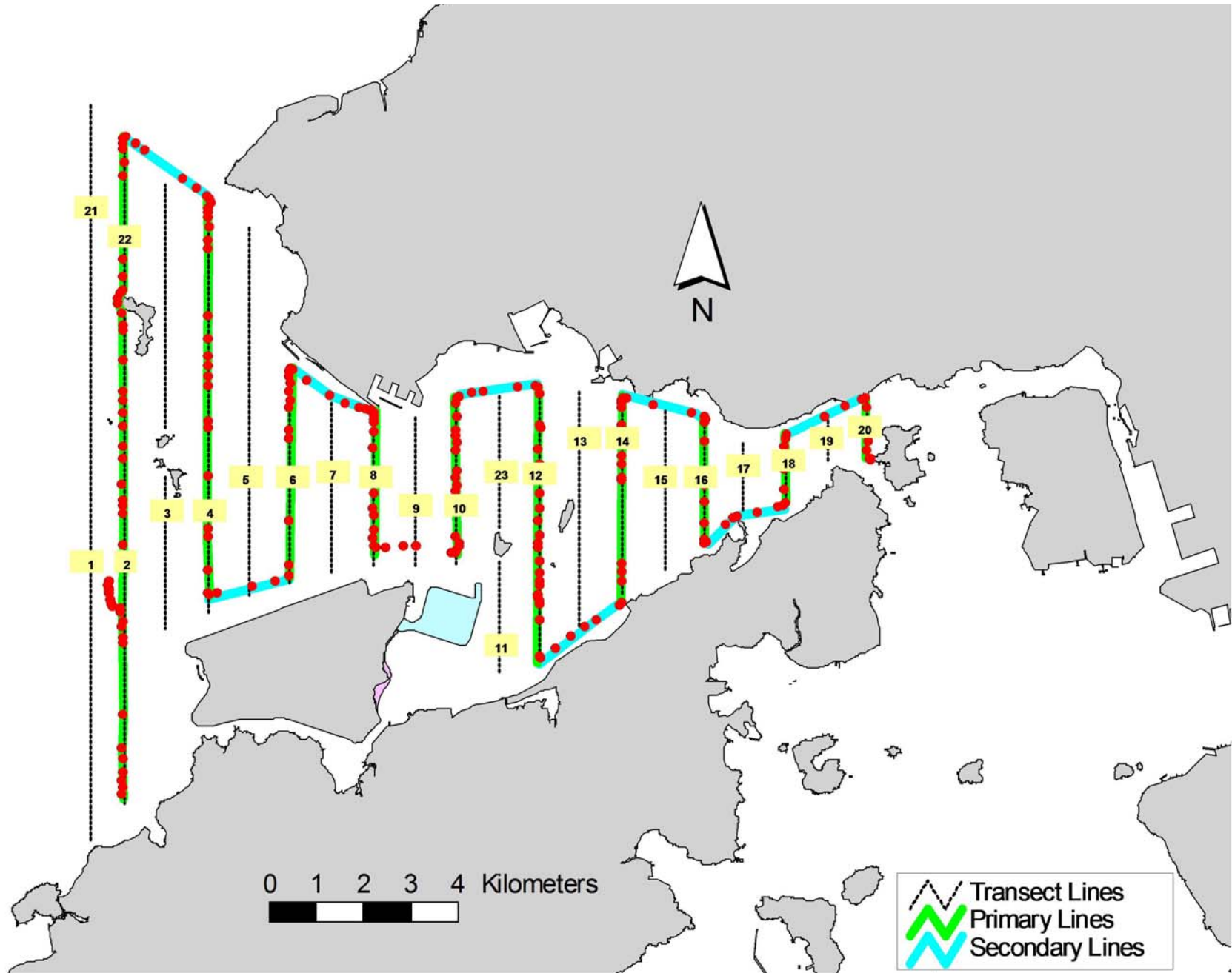


Figure 2. Survey Route on April 4th, 2014

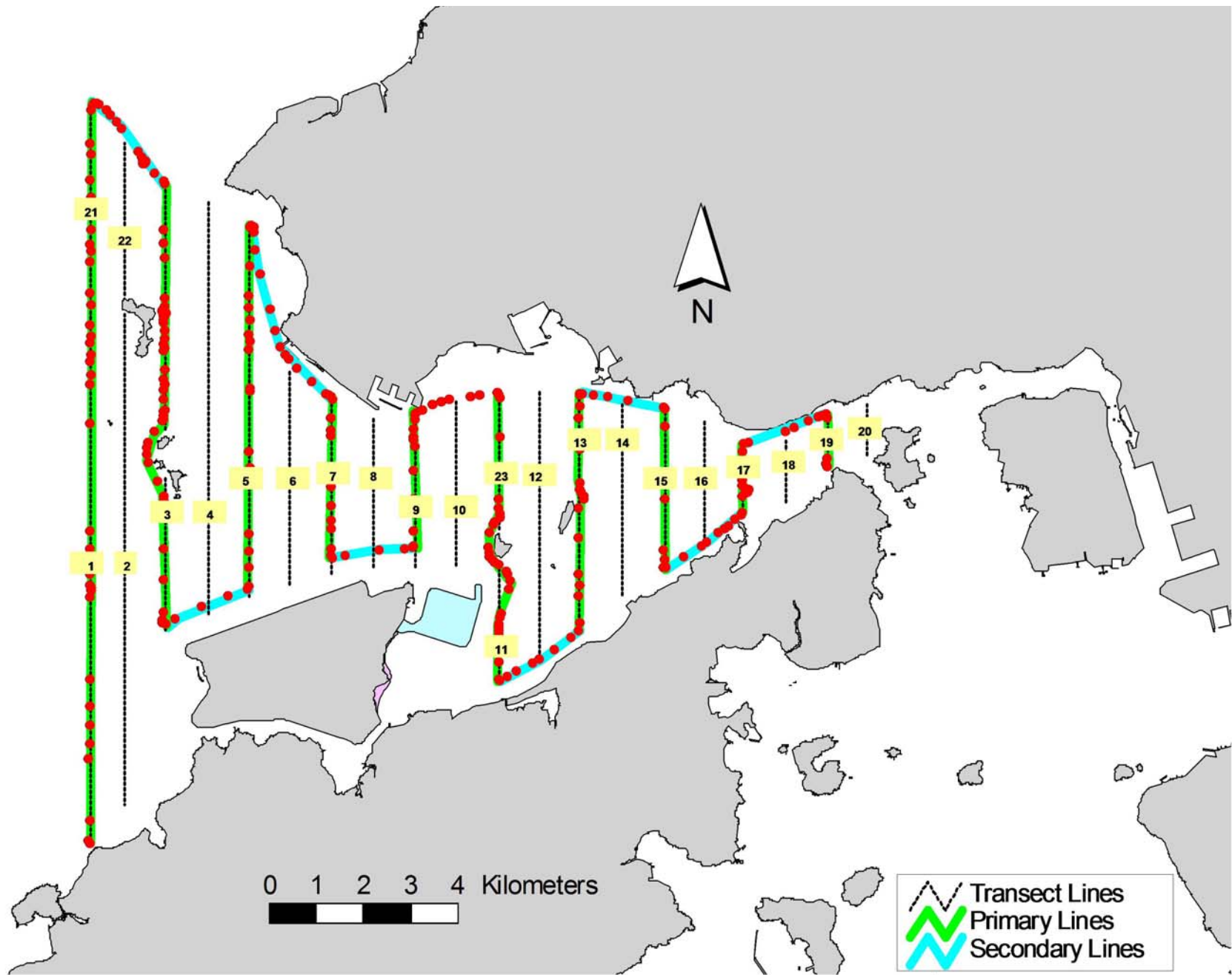


Figure 3. Survey Route on April 14th, 2014

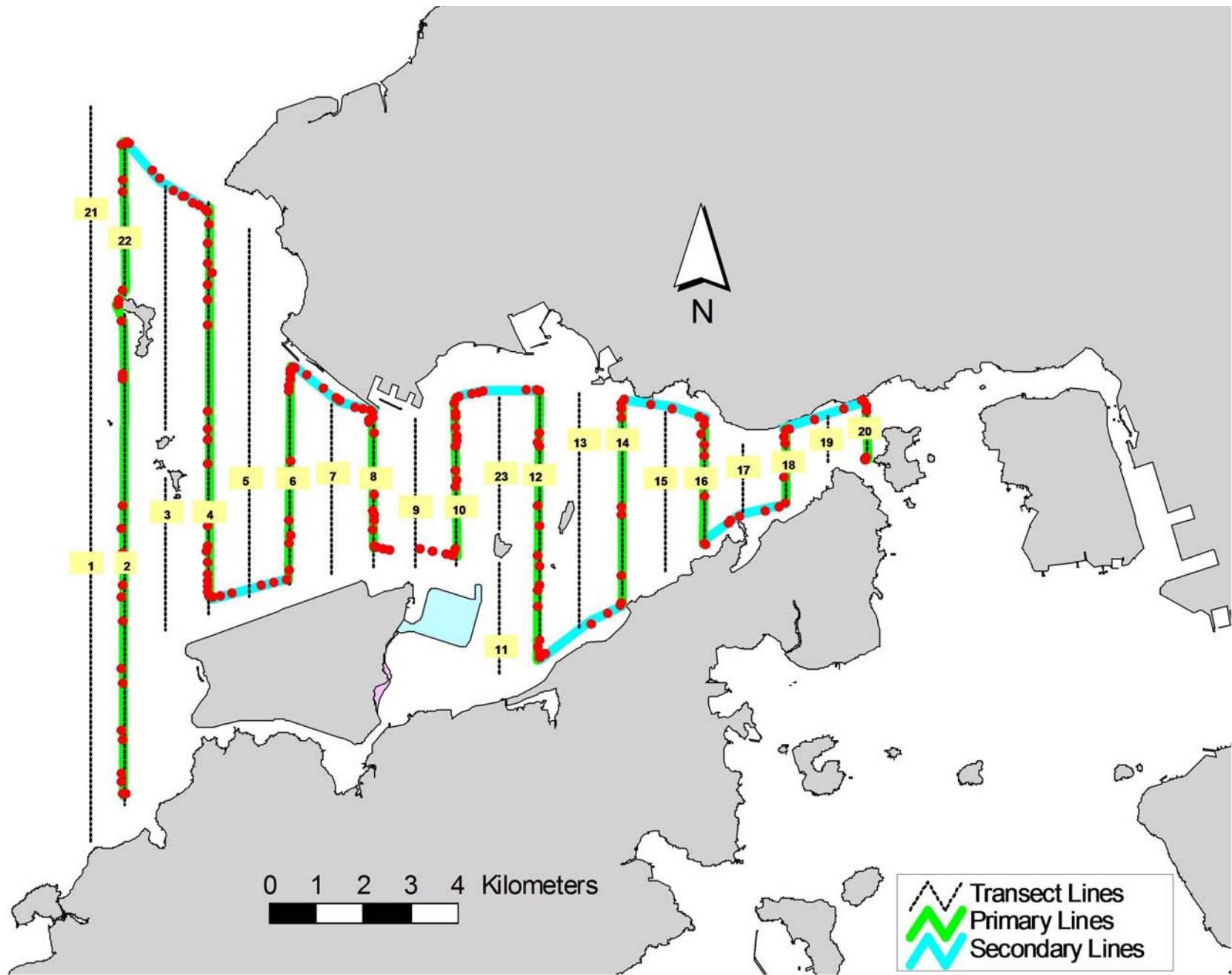


Figure 4. Survey Route on April 16th, 2014

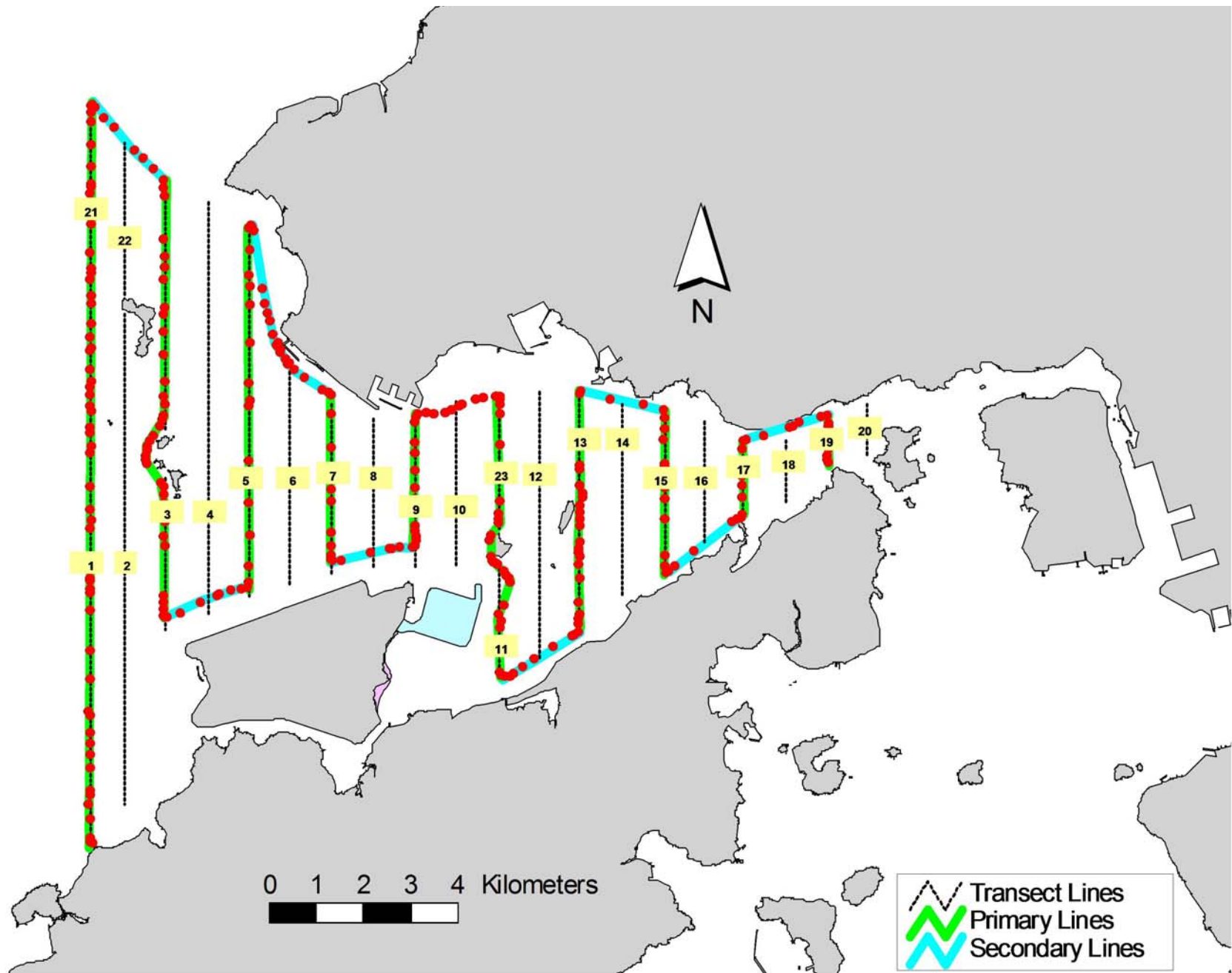


Figure 5. Survey Route on April 24th, 2014

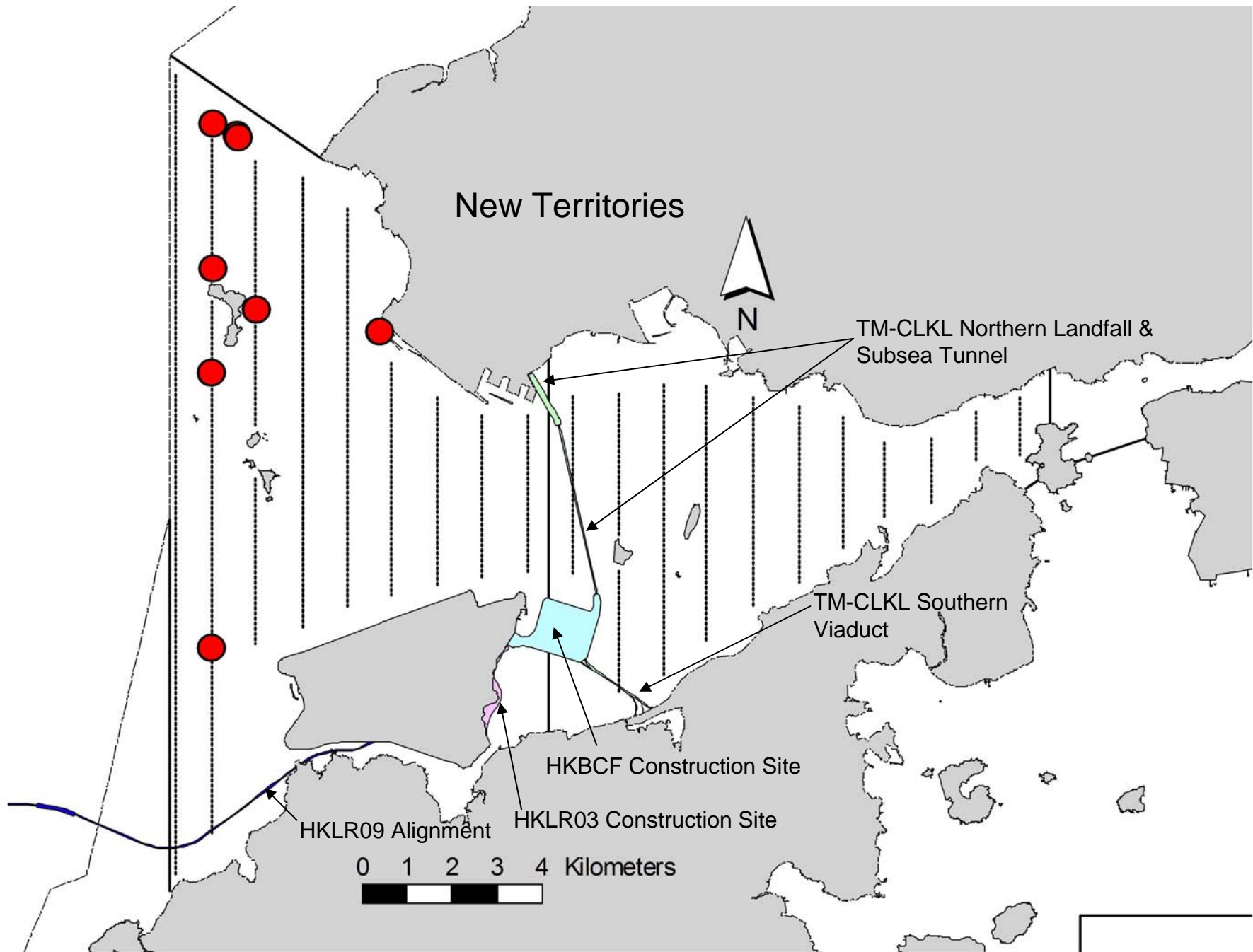


Figure 6. Distribution of Chinese White Dolphin Sightings During April 2014 HKLR03 Monitoring Surveys

Annex I. HKLR03 Survey Effort Database (April 2014)

(Abbreviations: BEAU = Beaufort Sea State; P = Primary Line Effort; S = Secondary Line Effort)

DATE	AREA	BEAU	EFFORT	SEASON	VESSEL	TYPE	P/S
4-Apr-14	NW LANTAU	1	1.41	SPRING	STANDARD31516	HKLR	P
4-Apr-14	NW LANTAU	2	8.57	SPRING	STANDARD31516	HKLR	P
4-Apr-14	NW LANTAU	3	14.93	SPRING	STANDARD31516	HKLR	P
4-Apr-14	NW LANTAU	4	3.00	SPRING	STANDARD31516	HKLR	P
4-Apr-14	NW LANTAU	2	3.16	SPRING	STANDARD31516	HKLR	S
4-Apr-14	NW LANTAU	3	3.00	SPRING	STANDARD31516	HKLR	S
4-Apr-14	NW LANTAU	4	1.00	SPRING	STANDARD31516	HKLR	S
4-Apr-14	NE LANTAU	2	0.80	SPRING	STANDARD31516	HKLR	P
4-Apr-14	NE LANTAU	3	15.53	SPRING	STANDARD31516	HKLR	P
4-Apr-14	NE LANTAU	4	4.16	SPRING	STANDARD31516	HKLR	P
4-Apr-14	NE LANTAU	2	2.20	SPRING	STANDARD31516	HKLR	S
4-Apr-14	NE LANTAU	3	8.51	SPRING	STANDARD31516	HKLR	S
14-Apr-14	NE LANTAU	2	0.90	SPRING	STANDARD31516	HKLR	P
14-Apr-14	NE LANTAU	3	9.61	SPRING	STANDARD31516	HKLR	P
14-Apr-14	NE LANTAU	4	6.20	SPRING	STANDARD31516	HKLR	P
14-Apr-14	NE LANTAU	2	1.80	SPRING	STANDARD31516	HKLR	S
14-Apr-14	NE LANTAU	3	6.39	SPRING	STANDARD31516	HKLR	S
14-Apr-14	NE LANTAU	4	2.90	SPRING	STANDARD31516	HKLR	S
14-Apr-14	NW LANTAU	2	1.40	SPRING	STANDARD31516	HKLR	P
14-Apr-14	NW LANTAU	3	14.62	SPRING	STANDARD31516	HKLR	P
14-Apr-14	NW LANTAU	4	23.91	SPRING	STANDARD31516	HKLR	P
14-Apr-14	NW LANTAU	2	2.10	SPRING	STANDARD31516	HKLR	S
14-Apr-14	NW LANTAU	3	7.86	SPRING	STANDARD31516	HKLR	S
14-Apr-14	NW LANTAU	4	2.99	SPRING	STANDARD31516	HKLR	S
16-Apr-14	NW LANTAU	2	4.27	SPRING	STANDARD31516	HKLR	P
16-Apr-14	NW LANTAU	3	24.56	SPRING	STANDARD31516	HKLR	P
16-Apr-14	NW LANTAU	4	2.91	SPRING	STANDARD31516	HKLR	P
16-Apr-14	NW LANTAU	2	2.45	SPRING	STANDARD31516	HKLR	S
16-Apr-14	NW LANTAU	3	4.20	SPRING	STANDARD31516	HKLR	S
16-Apr-14	NE LANTAU	2	3.94	SPRING	STANDARD31516	HKLR	P
16-Apr-14	NE LANTAU	3	15.37	SPRING	STANDARD31516	HKLR	P
16-Apr-14	NE LANTAU	4	1.10	SPRING	STANDARD31516	HKLR	P
16-Apr-14	NE LANTAU	2	1.20	SPRING	STANDARD31516	HKLR	S
16-Apr-14	NE LANTAU	3	9.49	SPRING	STANDARD31516	HKLR	S
24-Apr-14	NW LANTAU	2	1.91	SPRING	STANDARD31516	HKLR	P
24-Apr-14	NW LANTAU	3	29.94	SPRING	STANDARD31516	HKLR	P
24-Apr-14	NW LANTAU	4	8.44	SPRING	STANDARD31516	HKLR	P
24-Apr-14	NW LANTAU	2	0.80	SPRING	STANDARD31516	HKLR	S
24-Apr-14	NW LANTAU	3	9.72	SPRING	STANDARD31516	HKLR	S
24-Apr-14	NW LANTAU	4	2.20	SPRING	STANDARD31516	HKLR	S
24-Apr-14	NE LANTAU	2	5.03	SPRING	STANDARD31516	HKLR	P
24-Apr-14	NE LANTAU	3	10.14	SPRING	STANDARD31516	HKLR	P
24-Apr-14	NE LANTAU	4	1.31	SPRING	STANDARD31516	HKLR	P
24-Apr-14	NE LANTAU	2	7.37	SPRING	STANDARD31516	HKLR	S
24-Apr-14	NE LANTAU	3	3.65	SPRING	STANDARD31516	HKLR	S

Annex II. HKLR03 Chinese White Dolphin Sighting Database (April 2014)

(Abbreviations: STG# = Sighting Number; HRD SZ = Dolphin Herd Size; BEAU = Beaufort Sea State; PSD = Perpendicular Distance; BOAT ASSOC. = Fishing Boat Association; P/S: Sighting Made on Primary/Secondary Line\$)

DATE	STG #	TIME	HRD SZ	AREA	BEAU	PSD	EFFORT	TYPE	NORTHING	EASTING	SEASON	BOAT ASSOC.	P/S
4-Apr-14	1	1021	3	NW LANTAU	3	43	ON	HKLR	819355	805442	SPRING	NONE	P
14-Apr-14	1	1438	8	NW LANTAU	3	94	ON	HKLR	826451	806445	SPRING	NONE	P
14-Apr-14	2	1517	2	NW LANTAU	4	273	ON	HKLR	830117	806010	SPRING	NONE	S
16-Apr-14	1	1048	4	NW LANTAU	2	541	ON	HKLR	825124	805454	SPRING	NONE	P
16-Apr-14	2	1113	1	NW LANTAU	2	385	ON	HKLR	827306	805458	SPRING	NONE	P
16-Apr-14	3	1137	2	NW LANTAU	2	17	ON	HKLR	830362	805465	SPRING	NONE	P
16-Apr-14	4	1150	9	NW LANTAU	2	49	ON	HKLR	830073	806051	SPRING	NONE	S
24-Apr-14	1	1328	1	NW LANTAU	3	123	ON	HKLR	825992	809184	SPRING	NONE	S

Annex III. Individual dolphins identified during HKLR03 monitoring surveys in April 2014

ID#	DATE	STG#	AREA
EL01	16/04/14	2	NW LANTAU
NL24	14/04/14	1	NW LANTAU
NL48	16/04/14	4	NW LANTAU
NL104	16/04/14	4	NW LANTAU
NL120	14/04/14	1	NW LANTAU
NL145	16/04/14	1	NW LANTAU
NL182	24/04/14	1	NW LANTAU
NL202	16/04/14	4	NW LANTAU
NL214	16/04/14	3	NW LANTAU
NL224	16/04/14	3	NW LANTAU
NL226	04/04/14	1	NW LANTAU
NL259	04/04/14	1	NW LANTAU
	16/04/14	4	NW LANTAU
NL261	16/04/14	4	NW LANTAU
NL262	16/04/14	4	NW LANTAU
NL286	16/04/14	4	NW LANTAU
NL287	16/04/14	1	NW LANTAU
NL306	16/04/14	1	NW LANTAU
WL179	16/04/14	1	NW LANTAU



Annex IV. Photographs of Identified Individual Dolphins in April 2014 (HKLR03)

NL214_20140416_3



NL224_20140416_3



NL48_20140416_4



NL104_20140416_4



NL202_20140416_4



NL259_20140416_4



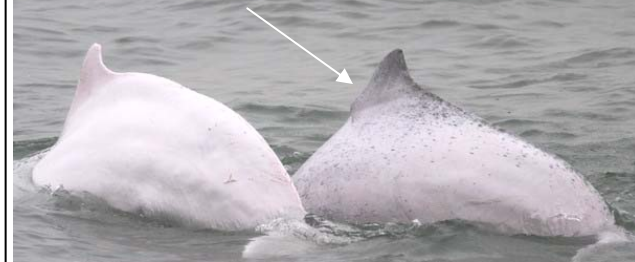
NL261_20140416_4



NL262_20140416_4



NL286_20140416_4





Annex IV. (cont'd)