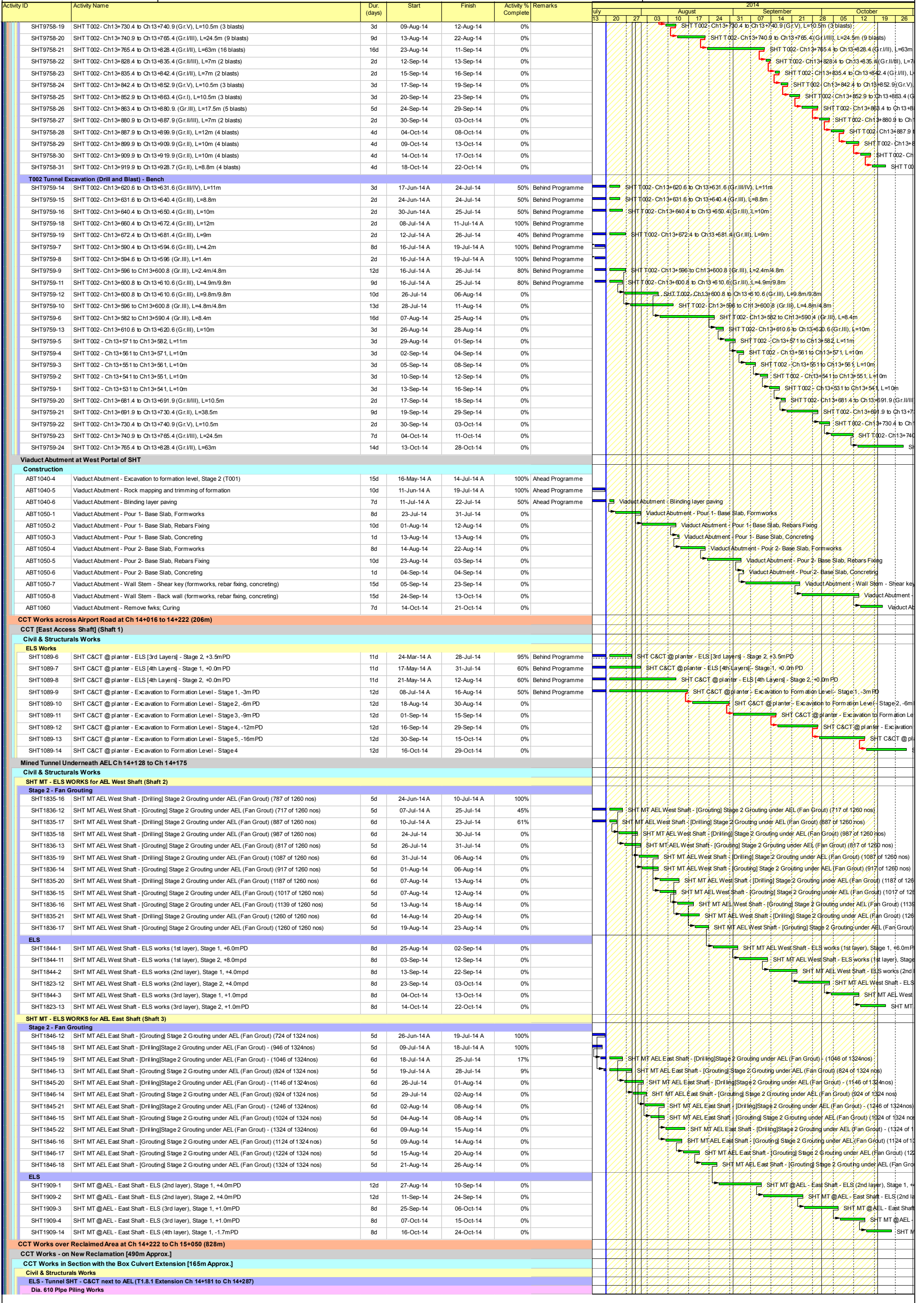


Activity ID	Activity Name	Dur (days)	Start	Finish	Activity % Complete	Remarks	2014											
							July 13	20	27	03	10	17	24	31	07	14	21	28
<b>3 MONTHS PROGRAMME HY/2011/03 (August 2014 to October 2014)(Rev0)</b>																		
<b>WORKS IN SOUTH AREA - CH 13+516 to CH 15+050 (SCENIC HILL TUNNEL, MT &amp; CCT)</b>																		
<b>Reclamation Works</b>																		
<b>Reclamation Works - SWCH0+000 to SWCH 0+570</b>																		
<b>Seawall Construction (South Area) - CH. 0+430 to CH 0+600 - 70m</b>																		
SW1110	South Area - Seawall, Underlayer Rock	11d	12-Jun-14 A	01-Aug-14	20%	Behind Programme	South Area - Seawall, Underlayer Rock											
SW1120	South Area - Seawall, Rock armour (1st layer)	11d	02-Aug-14	14-Aug-14	0%		South Area - Seawall, Rock armour (1st layer)											
<b>Reclamation Works - SWCH0+570 to SWCH 0+960</b>																		
<b>Band Drains</b>																		
RSC1076-6	Band drain installation (10,000 nos. of 12,792 nos)	10d	25-Jun-14 A	17-Jul-14 A	100%	Behind Programme	Band drain installation (12,792 nos. of 12,792 nos)											
RSC1076-7	Band drain installation (12,792 nos. of 12,792 nos)	10d	17-Jul-14 A	31-Jul-14	14%	Behind Programme												
<b>General Fill to Formation +5.5mPD</b>																		
RSC1077-1	Type B fill from +2.5 to formation [14,000 of 59,954m <sup>3</sup> ]	9d	04-Apr-14 A	01-Aug-14	64%	Behind Programme	Type B fill from +2.5 to formation [14,000 of 59,954m <sup>3</sup> ]											
RSC1077-2	Type B fill from +2.5 to formation [28,000 of 59,954m <sup>3</sup> ]	9d	02-Aug-14	12-Aug-14	0%		Type B fill from +2.5 to formation [28,000 of 59,954m <sup>3</sup> ]											
RSC1077-3	Type B fill from +2.5 to formation [42,000 of 59,954m <sup>3</sup> ]	9d	13-Aug-14	22-Aug-14	0%		Type B fill from +2.5 to formation [42,000 of 59,954m <sup>3</sup> ]											
RSC1077-4	Type B fill from +2.5 to formation [59,954 of 59,954m <sup>3</sup> ]	9d	23-Aug-14	02-Sep-14	0%		Type B fill from +2.5 to formation [59,954 of 59,954m <sup>3</sup> ]											
<b>Seawall Construction (South Area) - CH 0+600 to CH 0+980</b>																		
<b>SWCH 0+600 to SWCH 0+640 - 40m</b>																		
SW0920	South Area - Seawall, Underlayer Rock	6d	19-Jun-14 A	26-Jul-14	20%	Behind Programme	South Area - Seawall, Underlayer Rock											
SW0930	South Area - Seawall, Rock armour (1st layer)	6d	28-Jul-14	02-Aug-14	0%		South Area - Seawall, Rock armour (1st layer)											
<b>SWCH 0+640 to SWCH 0+720 - 80m</b>																		
SW1210	South Area - Seawall, Rockfill Core	9d	13-Jun-14 A	30-Jul-14	50%	Behind Programme	South Area - Seawall, Rockfill Core											
SW1220	South Area - Seawall, Underlayer Rock	6d	31-Jul-14	06-Aug-14	0%		South Area - Seawall, Underlayer Rock											
SW1230	South Area - Seawall, Rock armour (1st layer)	6d	07-Aug-14	13-Aug-14	0%		South Area - Seawall, Rock armour (1st layer)											
<b>SWCH 0+720 to SWCH 0+780 - 60m</b>																		
SW1310	South Area - Seawall, Rockfill Core	9d	07-Jul-14 A	30-Jul-14	10%	Behind Programme	South Area - Seawall, Rockfill Core											
SW1320	South Area - Seawall, Underlayer Rock	6d	31-Jul-14	06-Aug-14	0%		South Area - Seawall, Underlayer Rock											
SW1330	South Area - Seawall, Rock armour (1st layer)	7d	07-Aug-14	14-Aug-14	0%		South Area - Seawall, Rock armour (1st layer)											
<b>SWCH 0+780 to SWCH 0+850 - 70m</b>																		
SW1410	South Area - Seawall, Rockfill Core	9d	05-Jul-14 A	30-Jul-14	10%	Behind Programme	South Area - Seawall, Rockfill Core											
SW1420	South Area - Seawall, Underlayer Rock	7d	31-Jul-14	07-Aug-14	0%		South Area - Seawall, Underlayer Rock											
SW1430	South Area - Seawall, Rock armour (1st layer)	6d	08-Aug-14	14-Aug-14	0%		South Area - Seawall, Rock armour (1st layer)											
<b>SWCH 0+850 to SWCH 0+900 - 50m</b>																		
SW1500	South Area - Seawall, Trimming & Laying Geotextile along seawall line	8d	26-May-14 A	28-Jul-14	95%	Behind Programme	South Area - Seawall, Trimming & Laying Geotextile along seawall line											
SW1510	South Area - Seawall, Rockfill Core	8d	29-Jul-14	06-Aug-14	0%		South Area - Seawall, Rockfill Core											
SW1520	South Area - Seawall, Underlayer Rock	6d	07-Aug-14	13-Aug-14	0%		South Area - Seawall, Underlayer Rock											
SW1530	South Area - Seawall, Rock armour (1st layer)	6d	14-Aug-14	20-Aug-14	0%		South Area - Seawall, Rock armour (1st layer)											
<b>SWCH 0+900 to SWCH 0+960 - 60m</b>																		
SW1600	South Area - Seawall, Trimming & Laying Geotextile along seawall line	15d	03-Jun-14 A	31-Jul-14	50%	Behind Programme	South Area - Seawall, Trimming & Laying Geotextile along seawall line											
SW1610	South Area - Seawall, Rockfill Core	8d	01-Aug-14	09-Aug-14	0%		South Area - Seawall, Rockfill Core											
SW1620	South Area - Seawall, Underlayer Rock	6d	11-Aug-14	16-Aug-14	0%		South Area - Seawall, Underlayer Rock											
SW1630	South Area - Seawall, Rock armour (1st layer)	7d	18-Aug-14	25-Aug-14	0%		South Area - Seawall, Rock armour (1st layer)											
<b>Surcharge</b>																		
RSC1167-1	Forming surcharge, Sub-zone 2-2 [15,000 of 50,000m <sup>3</sup> ]	12d	03-Sep-14	17-Sep-14	0%		Forming surcharge, Sub-zone 2-2 [15,000 of 50,000m <sup>3</sup> ]											
RSC1167-2	Forming surcharge, Sub-zone 2-2 [30,000 of 50,000m <sup>3</sup> ]	15d	18-Sep-14	07-Oct-14	0%		Forming surcharge, Sub-zone 2-2 [30,000 of 50,000m <sup>3</sup> ]											
RSC1167-3	Forming surcharge, Sub-zone 2-2 [50,000 of 50,000m <sup>3</sup> ]	15d	08-Oct-14	24-Oct-14	0%		Forming surcharge, Sub-zone 2-2 [50,000 of 50,000m <sup>3</sup> ]											
<b>SHT Mined Tunnel Works at Scenic Hill</b>																		
<b>Mined Tunnel West Portal Works</b>																		
<b>Site Formation</b>																		
<b>Temp. Transformer Room</b>																		
SHT9792-16	Installation CLP cables, equipment, transformer for Transformer Rooms, Stage 2	12d	25-Jun-14 A	08-Aug-14	20%	Behind Programme	Installation CLP cables, equipment, transformer for Transformer Rooms, Stage 2											
SHT9792-26	Installation CLP cables, equipment, transformer for Transformer Rooms, Stage 3	12d	09-Aug-14	22-Aug-14	0%		Installation CLP cables, equipment, transformer for Transformer Rooms, Stage 3											
<b>Mined Tunnel through Scenic Hill [480m Approx.]</b>																		
<b>To Zhuhai-Macao [4-Lane] Carriageway - T001</b>																		
<b>From West-end</b>																		
<b>T001 Tunnel Excavation (Drill &amp; Blast) - Heading</b>																		
SHT9742-10	SHT T001 - Ch13+670.6 to Ch13+670.4 (Gr.IV), L=19.8m (9 blasts)	9d	13-Jun-14 A	17-Jul-14 A	100%	Behind Programme	SHT T001 - Ch13+670.6 to Ch13+670.4 (Gr.IV), L=19.8m (9 blasts)											
SHT9742-11	SHT T001 - Ch13+670.4 to Ch13+680.4 (Gr.III), L=10m (4 blasts)	4d	19-Jul-14 A	22-Jul-14	47%	Behind Programme	SHT T001 - Ch13+670.4 to Ch13+680.4 (Gr.III), L=10m (4 blasts)											
SHT9742-12	SHT T001 - Ch13+680.4 to Ch13+690.4 (Gr.I), L=10m (4 blasts)	4d	23-Jul-14	26-Jul-14	0%		SHT T001 - Ch13+680.4 to Ch13+690.4 (Gr.I), L=10m (4 blasts)											
SHT9742-13	SHT T001 - Ch13+690.4 to Ch13+700.9 (Gr.III), L=10.5m (3 blasts)	3d	28-Jul-14	30-Jul-14	0%		SHT T001 - Ch13+690.4 to Ch13+700.9 (Gr.III), L=10.5m (3 blasts)											
SHT9742-14	SHT T001 - Ch13+700.9 to Ch13+711.4 (Gr.I), L=10.5m (3 blasts)	3d	31-Jul-14	02-Aug-14	0%		SHT T001 - Ch13+700.9 to Ch13+711.4 (Gr.I), L=10.5m (3 blasts)											
SHT9742-15	SHT T001 - Ch13+711.4 to Ch13+721.9 (Gr.V), L=10.5m (3 blasts)	3d	04-Aug-14	06-Aug-14	0%		SHT T001 - Ch13+711.4 to Ch13+721.9 (Gr.V), L=10.5m (3 blasts)											
SHT9742-16	SHT T001 - Ch13+721.9 to Ch13+732.4 (Gr.III), L=10.5m (3 blasts)	3d	07-Aug-14	09-Aug-14	0%		SHT T001 - Ch13+721.9 to Ch13+732.4 (Gr.III), L=10.5m (3 blasts)											
SHT9742-17	SHT T001 - Ch13+732.4 to Ch13+798.9 (Gr.III), L= 33m/66.5m (9 blasts)	9d	11-Aug-14	20-Aug-14	0%		SHT T001 - Ch13+732.4 to Ch13+798.9 (Gr.III), L= 33m/66.5m (9 blasts)											
SHT9742-18	SHT T001 - Ch13+732.4 to Ch13+798.9 (Gr.III), L= 66.5m/66.5m (10 blasts)	10d	21-Aug-14	01-Sep-14	0%		SHT T001 - Ch13+732.4 to Ch13+798.9 (Gr.III), L= 66.5m/66.5m (10 blasts)											
SHT9742-19	SHT T001 - Ch13+798.9 to Ch13+805.9 (Gr.IV), L= 7m (2 blasts)	2d	02-Sep-14	03-Sep-14	0%		SHT T001 - Ch13+798.9 to Ch13+805.9 (Gr.IV), L= 7m (2 blasts)											
SHT9742-20	SHT T001 - Ch13+805.9 to Ch13+826.9 (Gr.III), L= 21m (6 blasts)	6d	04-Sep-14	11-Sep-14	0%		SHT T001 - Ch13+805.9 to Ch13+826.9 (Gr.III), L= 21m (6 blasts)											
SHT9742-21	SHT T001 - Ch13+826.9 to Ch13+875.9 (Gr.IV), L= 49m (14 blasts)	14d	12-Sep-14	27-Sep-14	0%		SHT T001 - Ch13+826.9 to Ch13+875.9 (Gr.IV), L= 49m (14 blasts)											
SHT9742-22	SHT T001 - Ch13+875.9 to Ch13+889.9 (Gr.III), L= 14m (4 blasts)	4d	29-Sep-14	04-Oct-14	0%		SHT T001 - Ch13+875.9 to Ch13+889.9 (Gr.III), L= 14m (4 blasts)											
SHT9742-23	SHT T001 - Ch13+889.9 to Ch13+899.9 (Gr.III), L= 10m (4 blasts)	4d	06-Oct-14	09-Oct-14	0%		SHT T001 - Ch13+889.9 to Ch13+899.9 (Gr.III), L= 10m (4 blasts)											
SHT9742-24	SHT T001 - Ch13+899.9 to Ch13+909.9 (Gr.III), L= 10m (4 blasts)	4d	10-Oct-14	14-Oct-14	0%		SHT T001 - Ch13+899.9 to Ch13+909.9 (Gr.III), L= 10m (4 blasts)											
SHT9742-25	SHT T001 - Ch13+909.9 to Ch13+918.7 (Gr.III), L= 8.8m (4 blasts)	4d	13-Oct-14	18-Oct-14	0%		SHT T001 - Ch13+909.9 to Ch13+918.7 (Gr.III), L= 8.8m (4 blasts)											
SHT9742-26	SHT T001 - Ch13+918.7 to Ch13+920.9 (Gr.III), L= 2.2m (1 blast)	4d	20-Oct-14	23-Oct-14	0%		SHT T001 - Ch13+918.7 to Ch13+920.9 (Gr.III), L= 2.2m (1 blast)											
<b>T001 Tunnel Excavation (Drill &amp; Blast) - Bench</b>																		
SHT9743-2	SHT T001 - Ch13+577 to Ch13+591 (Gr.III), L=7m/14m	14d	26-Jun-14 A	11-Jul-14 A	100%	Behind Programme	SHT T001 - Ch13+577 to Ch13+591 (Gr.III), L=7m/14m											
SHT9743-21	SHT T001 - Ch13+567 to Ch13+575, L=8m	3d	08-Jul-14 A	10-Jul-14 A	100%	Behind Programme	SHT T001 - Ch13+567 to Ch13+575, L=8m											
SHT9743-31	SHT T001 - Ch13+557 to Ch13+567, L=10m	3d	09-Jul-14 A	11-Jul-14 A	100%	Behind Programme	SHT T001 - Ch13+557 to Ch13+567, L=10m											
SHT9743-3	SHT T001 - Ch13+577 to Ch13+591 (Gr.III), L=14m/14m	14d	12-Jul-14 A	19-Jul-14 A	100%	Behind Programme	SHT T001 - Ch13+577 to Ch13+591 (Gr.III), L=14m/14m											
SHT9743-10	SHT T001 - Ch13+650.6 to Ch13+670.4 (Gr.IV), L=19.8m	7d	21-Jul-14	28-Jul-14	0%		SHT T001 - Ch13+650.6 to Ch13+670.4 (Gr.IV), L=19.8m											
SHT9743-11	SHT T001 - Ch13+670.4 to Ch13+680.4 (Gr.III), L=10m	2d	29-Jul-14	30-Jul-14	0%		SHT T001 - Ch13+670.4 to Ch13+680.4 (Gr.III), L=10m											
SHT9743-12	SHT T001 - Ch13+680.4 to Ch13+690.4 (Gr.I), L=10m	2d	31-Jul-14	01-Aug-14	0%		SHT T001 - Ch13+680.4 to Ch13+690.4 (Gr.I), L=10m											
SHT9743-13	SHT T001 - Ch13+690.4 to Ch13+700.9 (Gr.III), L=10.5m	2d	02-Aug-14	04-Aug-14	0%		SHT T001 - Ch13+690.4 to Ch13+700.9 (Gr.III), L=10.5m											
SHT9743-14	SHT T001 - Ch13+700.9 to Ch13+711.4 (Gr.I), L=10.5m	2d	05-Aug-14	06-Aug-14	0%		SHT T001 - Ch13+700.9 to Ch13+711.4 (Gr.I), L=10.5m											
SHT9743-15	SHT T001 - Ch13+711.4 to Ch13+721.9 (Gr.V), L=10.5m	2d	07-Aug-14	08-Aug-14	0%		SHT T001 - Ch13+711.4 to Ch13+721.9 (Gr.V), L=10.5m											
SHT9743-16	SHT T001 - Ch13+721.9 to Ch13+732.4 (Gr.III), L=10.5m	2d	09-Aug-14	11-Aug-14	0%		SHT T001 - Ch13+721.9 to Ch13+732.4 (Gr.III), L=10.5m											
SHT9743-17	SHT T001 - Ch13+732.4 to Ch13+798.9 (Gr.III), L= 33m/66.5m	8d	12-Aug-14	20-Aug-14	0%		SHT T001 - Ch13+732.4 to Ch13+798.9 (Gr.III), L= 33m/66.5m											
SHT9743-37	SHT T001 - Ch13+732.4 to Ch13+798.9 (Gr.III), L= 66.5m/66.5m	9d	21-Aug-14	30-Aug-14	0%		SHT T001 - Ch13+732.4 to Ch13+798.9 (Gr.III), L= 66.5m/66.5m											
SHT9743-47	SHT T001 - Ch13+798.9 to Ch13+805.9 (Gr.IV), L= 7m	2d	01-Sep-14	02-Sep-14	0%		SHT T001 - Ch13+798.9 to Ch13+805.9 (Gr.IV), L= 7m											
SHT9743-57	SHT T001 - Ch13+805.9 to Ch13+826.9 (Gr.III), L= 21m	4d	03-Sep-14	06-Sep-14	0%		SHT T001 - Ch13+805.9 to Ch13+826.9 (Gr.III), L= 21m											
SHT9743-67	SHT T001 - Ch13+826.9 to Ch13+875.9 (Gr.IV), L= 49m	13d	08-Sep-14	23-Sep-14	0%		SHT T001 - Ch13+826.9 to Ch13+875.9 (Gr.IV), L= 49m											
SHT9743-77	SHT T001 - Ch13+875.9 to Ch13+889.9 (Gr.III), L= 14m	3d	24-Sep-14	26-Sep-14	0%		SHT T001 - Ch13+875.9 to Ch13+889.9 (Gr.III), L= 14m											
SHT9743-87	SHT T001 - Ch13+889.9 to Ch13+899.9 (Gr.III), L= 10m	3d	27-Sep-14	30-Sep-14	0%		SHT T001 - Ch13+889.9 to Ch13+899.9 (Gr.III), L= 10m											
SHT9743-97	SHT T001 - Ch13+899.9 to Ch13+909.9 (Gr.III), L= 10m	3d	03-Oct-14	06-Oct-14	0%		SHT T001 - Ch13+899.9 to Ch13+909.9 (Gr.III), L= 10m											
SHT9743-107	SHT T001 - Ch13+909.9 to Ch13+918.7 (Gr.III), L= 8.8m	3d	07-Oct-14	09-Oct-14	0%		SHT T001 - Ch13+909.9 to Ch13+918.7 (Gr.III), L= 8.8m											
SHT9743-117	SHT T001 - Ch13+918.7 to Ch13+920.9 (Gr.III), L= 2.2m	2d	10-Oct-14	11-Oct-14	0%		SHT T001 - Ch13+918.7 to Ch13+920.9 (Gr.III), L= 2.2m											
SHT9743-127	SHT T001 - Ch13+920.9 to Ch13+930.7 (Gr.III), L= 4.9m/9.8m	10d	13-Oct-14	23-Oct-14	0%		SHT T001 - Ch13+920.9 to Ch13+930.7 (Gr.III), L= 4.9m/9.8m											
<b>To HKBCF [3-Lane] Carriageway - T002</b>																		
<b>From West-end - 250m Approx.</b>																		
<b>T002 Tunnel Excavation (Drill and Blast) - Heading</b>																		
SHT9758-15	SHT T002 - Ch13+660.4 to Ch13+672.4 (Gr.III), L=12m (4 blasts)	4d	08-Jul-14 A	12-Jul-14 A	100%	Behind Programme	SHT T002 - Ch13+660.4 to Ch13+672.4 (Gr.III), L=12m (4 blasts)											
SHT9758-16	SHT T002 - Ch13+672.4 to Ch13+681.4 (Gr.III), L=9m (3 blasts)	3d	12-Jul-14 A	23-Jul-14	41%	Behind Programme	SHT T002 - Ch13+672.4 to Ch13+681.4 (Gr.III), L=9m (3 blasts)											
SHT9758-17	SHT T002 - Ch13+681.4 to Ch13+691.9 (Gr.III), L=10.5m (3 blasts)	3d	24-Jul-14	26-Jul-14	0%		SHT T002 - Ch13+681.4 to Ch13+691.9 (Gr.III), L=10.5m (3 blasts)											
SHT9758-18	SHT T002 - Ch13+691.9 to Ch13+730.4 (Gr.II), L=38.5m (11 blasts)	11d	28-Jul-14	08-Aug-14	0%		SHT T002 - Ch13+691.9 to Ch13+730.4 (Gr.II), L=38.5m (11 blasts)											

- █ Works Programme
- █ Works Programme
- ◆ Works Programme
- ◆ Milestone
- ◆ Milestone
- █ Works Programme

**China State Construction Engineering (Hong Kong) Ltd**

**Contract No. HY/2011/03 - HZMB, Hong Kong Link Road**















Activity ID	Activity Name	Dur (days)	Start	Finish	Activity % Complete	Remarks	2014																														
							July 13	20	27	03	10	17	24	31	07	14	21	28	05	12	19	26	02	09	16	23	30	06	13	20	27	03	10	17	24	31	07
<b>Pier A2</b>																																					
<b>Footings</b>																																					
BA1.1012-1	BA1 Pier A2-Footing - Blinding Layer	3d	07-Aug-14	09-Aug-14	0%		BA1 Pier A2-Footing - Blinding Layer																														
BA1.1012-2	BA1 Pier A2-Footing - Rebar Fixing	4d	11-Aug-14	14-Aug-14	0%		BA1 Pier A2-Footing - Rebar Fixing																														
BA1.1012-3	BA1 Pier A2-Footing - Formwork Erection	8d	15-Aug-14	23-Aug-14	0%		BA1 Pier A2-Footing - Formwork Erection																														
BA1.1012-4	BA1 Pier A2-Footing - Concreting	1d	25-Aug-14	25-Aug-14	0%		BA1 Pier A2-Footing - Concreting																														
BA1.1012-5	BA1 Pier A2-Footing - Formwork Removal	3d	26-Aug-14	28-Aug-14	0%		BA1 Pier A2-Footing - Formwork Removal																														
<b>Pier Column</b>																																					
BA1.1012-6	BA1 Pier A2-Column - Falsework Erection	9d	29-Aug-14	06-Sep-14	0%		BA1 Pier A2-Column - Falsework Erection																														
BA1.1012-7	BA1 Pier A2-Column - Rebar Fixing	10d	10-Sep-14	20-Sep-14	0%		BA1 Pier A2-Column - Rebar Fixing																														
BA1.1012-8	BA1 Pier A2-Column - Formwork Erection	10d	22-Sep-14	04-Oct-14	0%		BA1 Pier A2-Column - Formwork Erection																														
BA1.1012-9	BA1 Pier A2-Column - Concreting	1d	06-Oct-14	06-Oct-14	0%		BA1 Pier A2-Column - Concreting																														
BA1.1012-10	BA1 Pier A2-Column - Formwork Removal	3d	07-Oct-14	09-Oct-14	0%		BA1 Pier A2-Column - Formwork Removal																														
<b>Bridge A1 - Bridge Deck Construction (Stage 2 &amp; Stage 3)</b>																																					
<b>Stage 2</b>																																					
<b>Base Slab and Web</b>																																					
BA1.1260-1	BA1 Bridge Deck - Base Slab Scaffold Erection	28d	10-Oct-14	11-Nov-14	0%		BA1 Bridge Deck - Base Slab Scaffold Erection																														
<b>Bridge A1 - Abutment Construction</b>																																					
<b>South Abutment</b>																																					
<b>Base Slab Construction</b>																																					
BA1.1030-1	BA1 South Abut. - Base Slab, Formwork Erection	5d	10-Oct-14	15-Oct-14	0%		BA1 South Abut. - Base Slab, Formwork Erection																														
BA1.1030-2	BA1 South Abut. - Base Slab, Rebar Fixing	10d	16-Oct-14	27-Oct-14	0%		BA1 South Abut. - Base Slab, Rebar Fixing																														
<b>Modification of Retaining Wall (at South of Tung Fai Road)</b>																																					
<b>Construction of New Retaining Wall (PART A)</b>																																					
RW1355	New retaining wall - Preparation Works for Base slab construction	12d	15-Aug-14*	28-Aug-14	0%		New retaining wall - Preparation Works for Base slab construction																														
RW1360	New retaining wall - Excavation for base slab construction	12d	29-Aug-14*	12-Sep-14	0%		New retaining wall - Excavation for base slab construction																														
<b>Bay 1</b>																																					
RW1050	New retaining wall - Construction of Base Slab	6d	13-Sep-14	19-Sep-14	0%		New retaining wall - Construction of Base Slab																														
RW1060	New retaining wall - Construction of Wall Stem	6d	20-Sep-14	26-Sep-14	0%		New retaining wall - Construction of Wall Stem																														
RW1070	New retaining wall - Construction of Parapet	4d	27-Sep-14	03-Oct-14	0%		New retaining wall - Construction of Parapet																														
<b>Bay 2</b>																																					
RW1080	New retaining wall - Construction of Base Slab	6d	20-Sep-14	26-Sep-14	0%		New retaining wall - Construction of Base Slab																														
RW1090	New retaining wall - Construction of Wall Stem	6d	27-Sep-14	06-Oct-14	0%		New retaining wall - Construction of Wall Stem																														
RW1100	New retaining wall - Construction of Parapet	4d	07-Oct-14	10-Oct-14	0%		New retaining wall - Construction of Parapet																														
<b>Bay 3</b>																																					
RW1110	New retaining wall - Construction of Base Slab	6d	13-Sep-14	19-Sep-14	0%		New retaining wall - Construction of Base Slab																														
RW1120	New retaining wall - Construction of Wall Stem	8d	20-Sep-14	29-Sep-14	0%		New retaining wall - Construction of Wall Stem																														
RW1130	New retaining wall - Construction of Parapet	4d	30-Sep-14	06-Oct-14	0%		New retaining wall - Construction of Parapet																														
<b>Bay 4</b>																																					
RW1140	New retaining wall - Construction of Base Slab	6d	20-Sep-14	26-Sep-14	0%		New retaining wall - Construction of Base Slab																														
RW1150	New retaining wall - Construction of Wall Stem	8d	27-Sep-14	08-Oct-14	0%		New retaining wall - Construction of Wall Stem																														
RW1160	New retaining wall - Construction of Parapet	4d	09-Oct-14	13-Oct-14	0%		New retaining wall - Construction of Parapet																														
<b>Modification of Retaining Wall (Part B)</b>																																					
RW1400	Modification of retaining wall - Excavation to demolish the wall stems of Retaining Wall	6d	05-Sep-14	12-Sep-14	0%		Modification of retaining wall - Excavation to demolish the wall stems of Retaining Wall																														
RW1370	Modification of retaining wall - Excavation for Base Slab Construction	4d	13-Sep-14	17-Sep-14	0%		Modification of retaining wall - Excavation for Base Slab Construction																														
<b>Bay 5</b>																																					
RW1170	Modification of retaining wall - Demolish Wall Stems of Existing Retaining Wall	4d	18-Sep-14	22-Sep-14	0%		Modification of retaining wall - Demolish Wall Stems of Existing Retaining Wall																														
RW1190	Modification of retaining wall - Base Slab	4d	23-Sep-14	26-Sep-14	0%		Modification of retaining wall - Base Slab																														
RW1200	Modification of retaining wall - Wall Stem	12d	27-Sep-14	13-Oct-14	0%		Modification of retaining wall - Wall Stem																														
RW1210	Modification of retaining wall - Top Slab	6d	14-Oct-14	20-Oct-14	0%		Modification of retaining wall - Top Slab																														
<b>Bay 6</b>																																					
RW1230	Modification of retaining wall - Demolish Wall Stems of Existing Retaining Wall	4d	13-Sep-14	17-Sep-14	0%		Modification of retaining wall - Demolish Wall Stems of Existing Retaining Wall																														
RW1250	Modification of retaining wall - Base Slab	4d	18-Sep-14	22-Sep-14	0%		Modification of retaining wall - Base Slab																														
RW1260	Modification of retaining wall - Wall Stem	12d	23-Sep-14	08-Oct-14	0%		Modification of retaining wall - Wall Stem																														
RW1270	Modification of retaining wall - Top Slab	6d	09-Oct-14	15-Oct-14	0%		Modification of retaining wall - Top Slab																														
RW1280	Modification of retaining wall - Parapet	4d	16-Oct-14	20-Oct-14	0%		Modification of retaining wall - Parapet																														
<b>Utility Culvert No.1</b>																																					
<b>Utility Culvert No. 1 Ext. across the road leading to Cheong Hong Road [48m Approx.]</b>																																					
UC1.1090	Util. Culvert No. 1 Ext. - Culvert structure, base slab	15d	31-Jul-14	16-Aug-14	0%		Util. Culvert No. 1 Ext. - Culvert structure, base slab																														
UC1.1091	Util. Culvert No. 1 Ext. - Culvert structure, installation of watermain inside UC1	15d	18-Aug-14	03-Sep-14	0%		Util. Culvert No. 1 Ext. - Culvert structure, installation of watermain inside UC1																														
UC1.1092	Util. Culvert No. 1 Ext. - Culvert structure, installation of other utilities inside UC1	15d	04-Sep-14	25-Sep-14	0%		Util. Culvert No. 1 Ext. - Culvert structure, installation of other utilities inside UC1																														
UC1.1101	Util. Culvert No. 1 Ext. - Culvert structure, removal/breaking of concrete structure inside UC1	8d	22-Sep-14	30-Sep-14	0%		Util. Culvert No. 1 Ext. - Culvert structure, removal/breaking of concrete structure inside UC1																														
UC1.1111	Util. Culvert No. 1 Ext. - Culvert structure, wall	15d	03-Oct-14	20-Oct-14	0%		Util. Culvert No. 1 Ext. - Culvert structure, wall																														