

Figure 1. Transect Line Layout in Northwest and Northeast Lantau Survey Areas

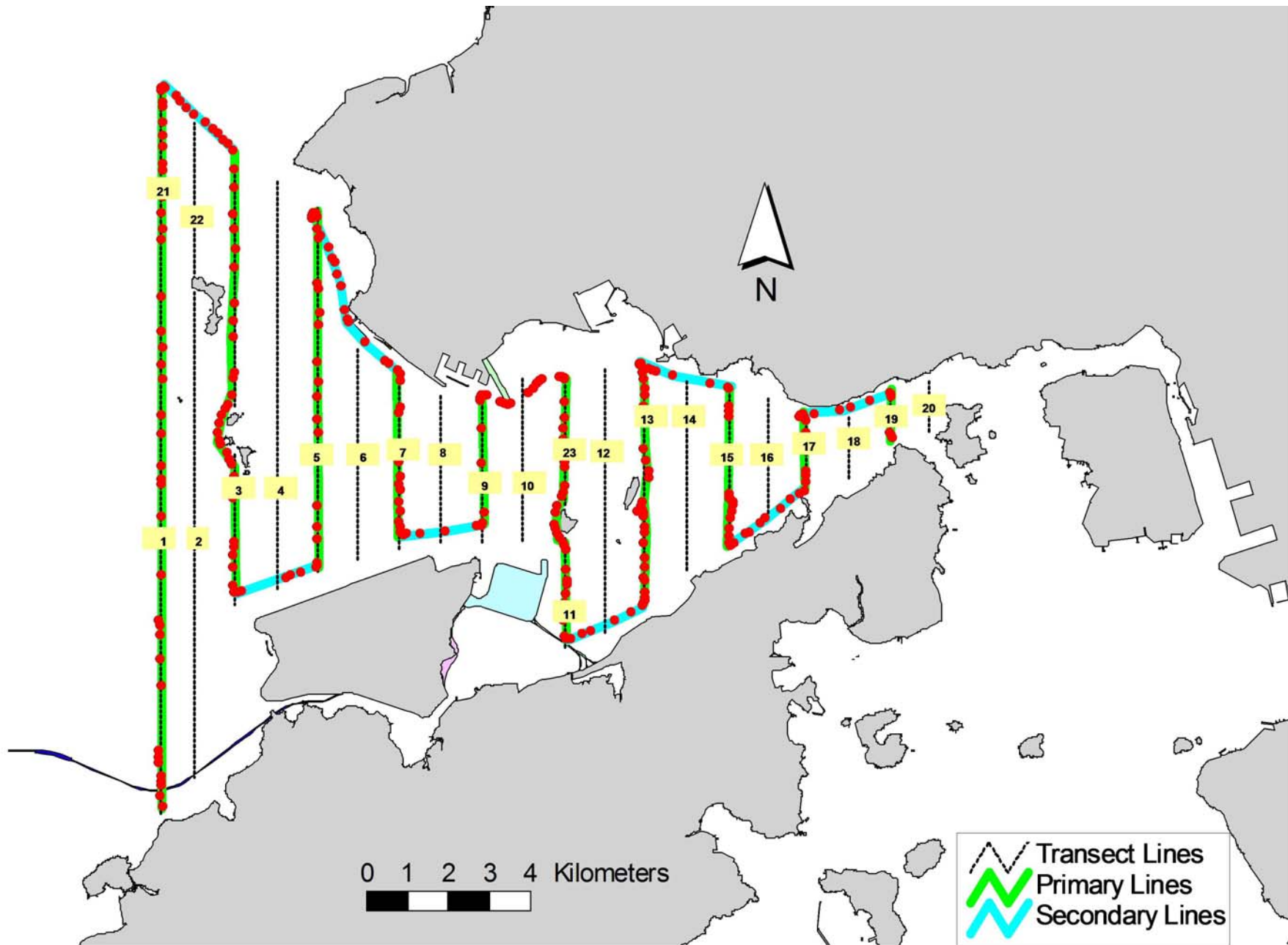


Figure 2. Survey Route on March 4<sup>th</sup>, 2015

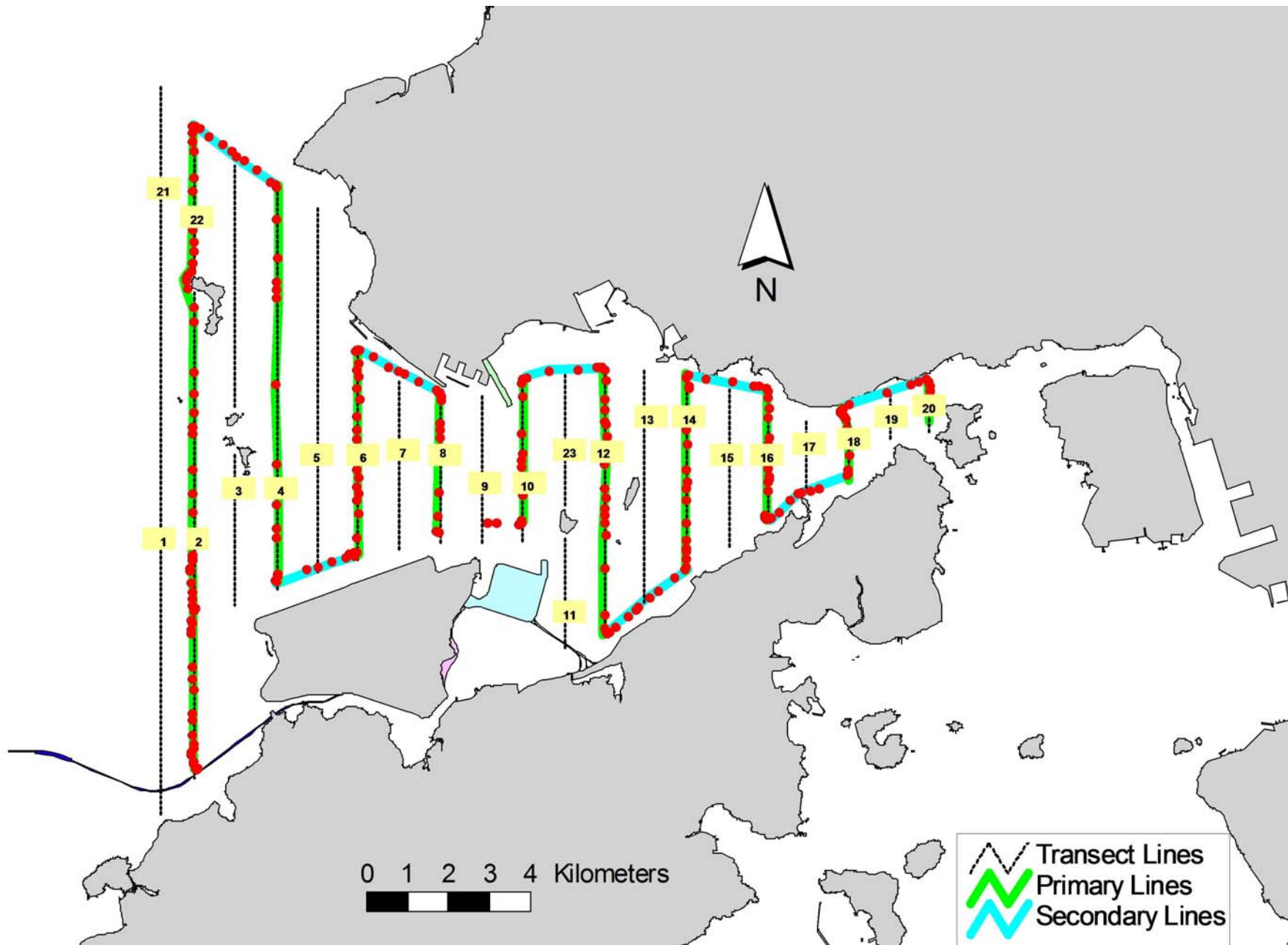


Figure 3. Survey Route on March 11<sup>th</sup>, 2015

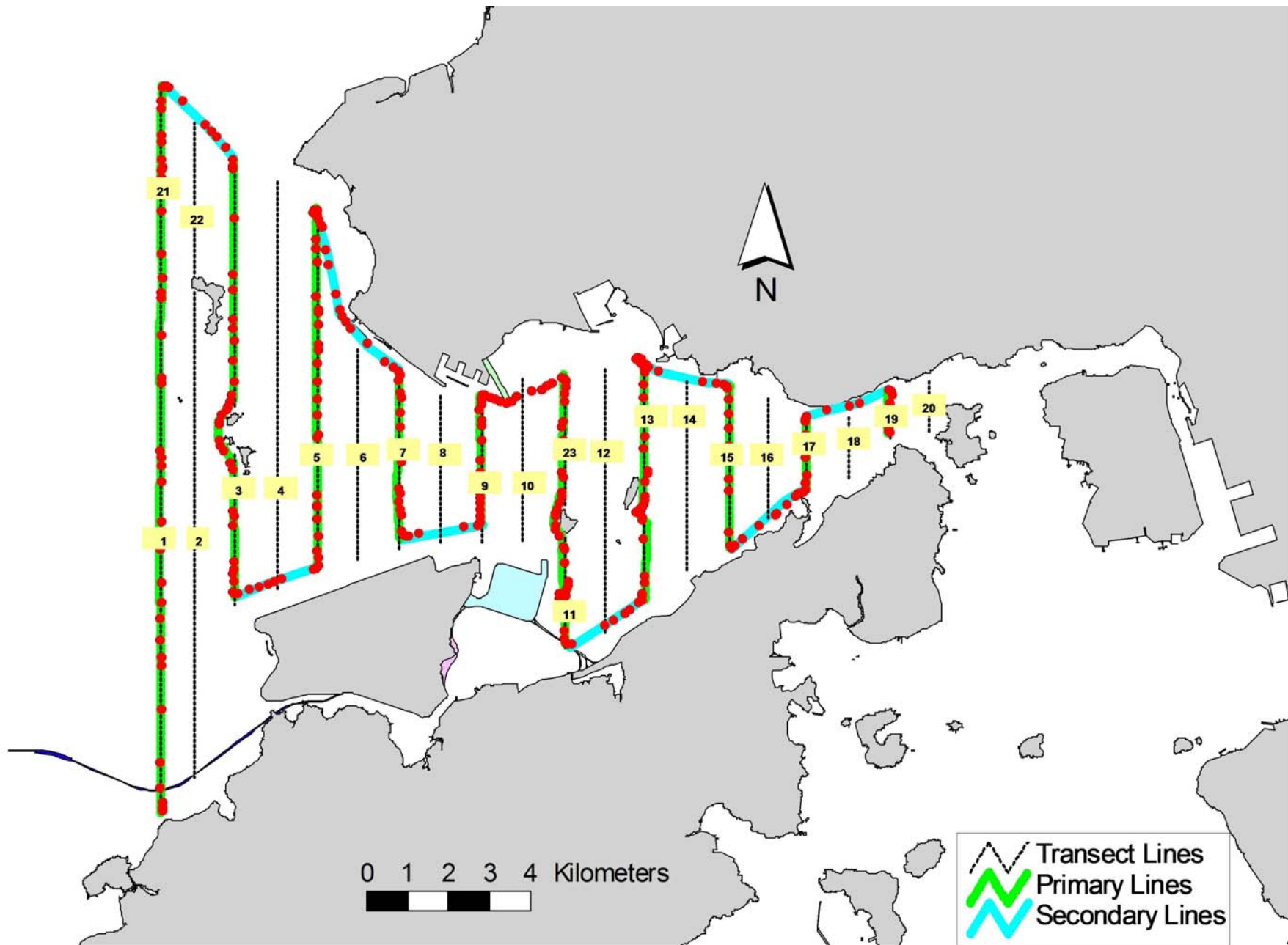


Figure 4. Survey Route on March 17<sup>th</sup>, 2015

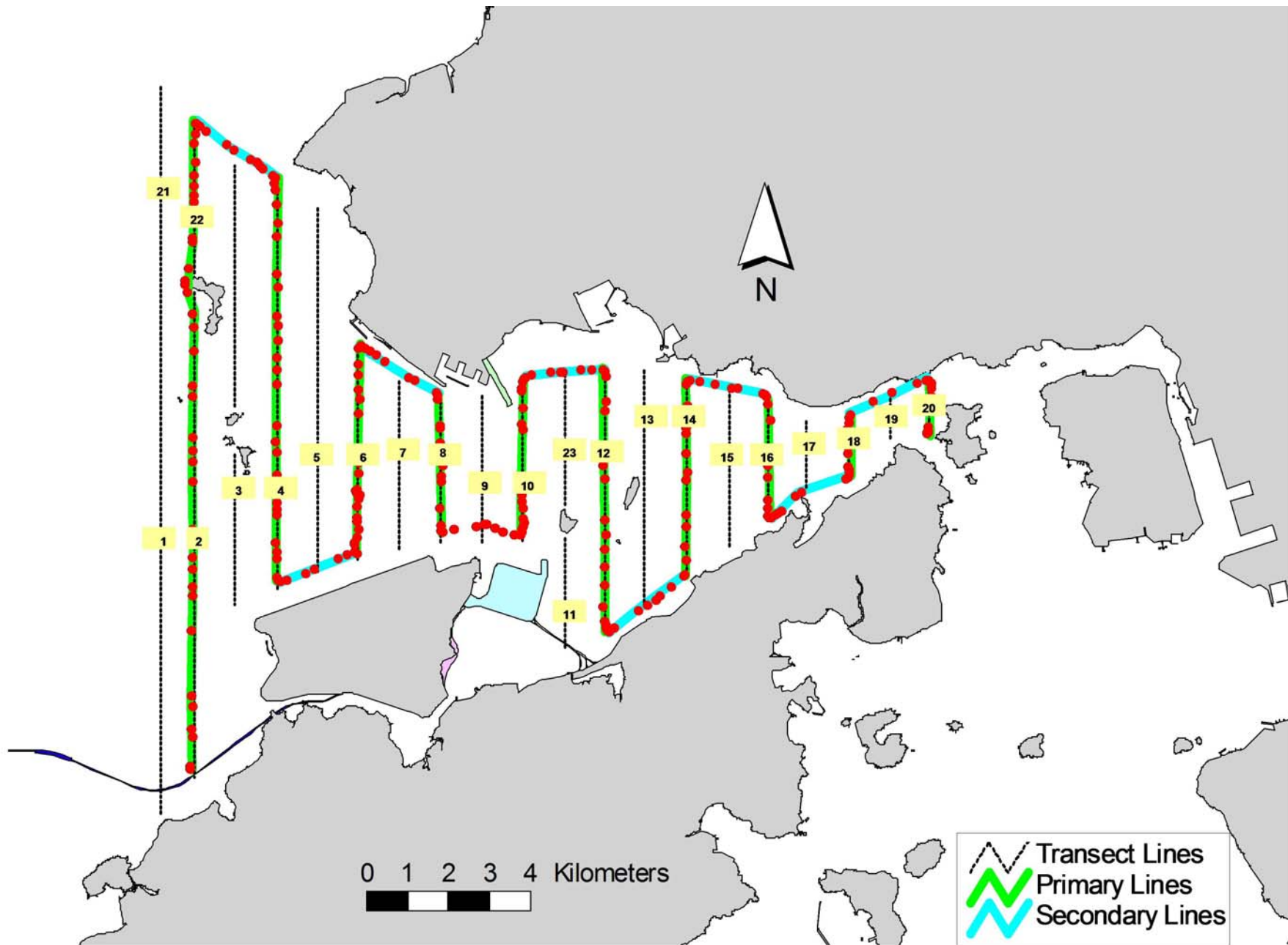


Figure 5. Survey Route on March 26<sup>th</sup>, 2015



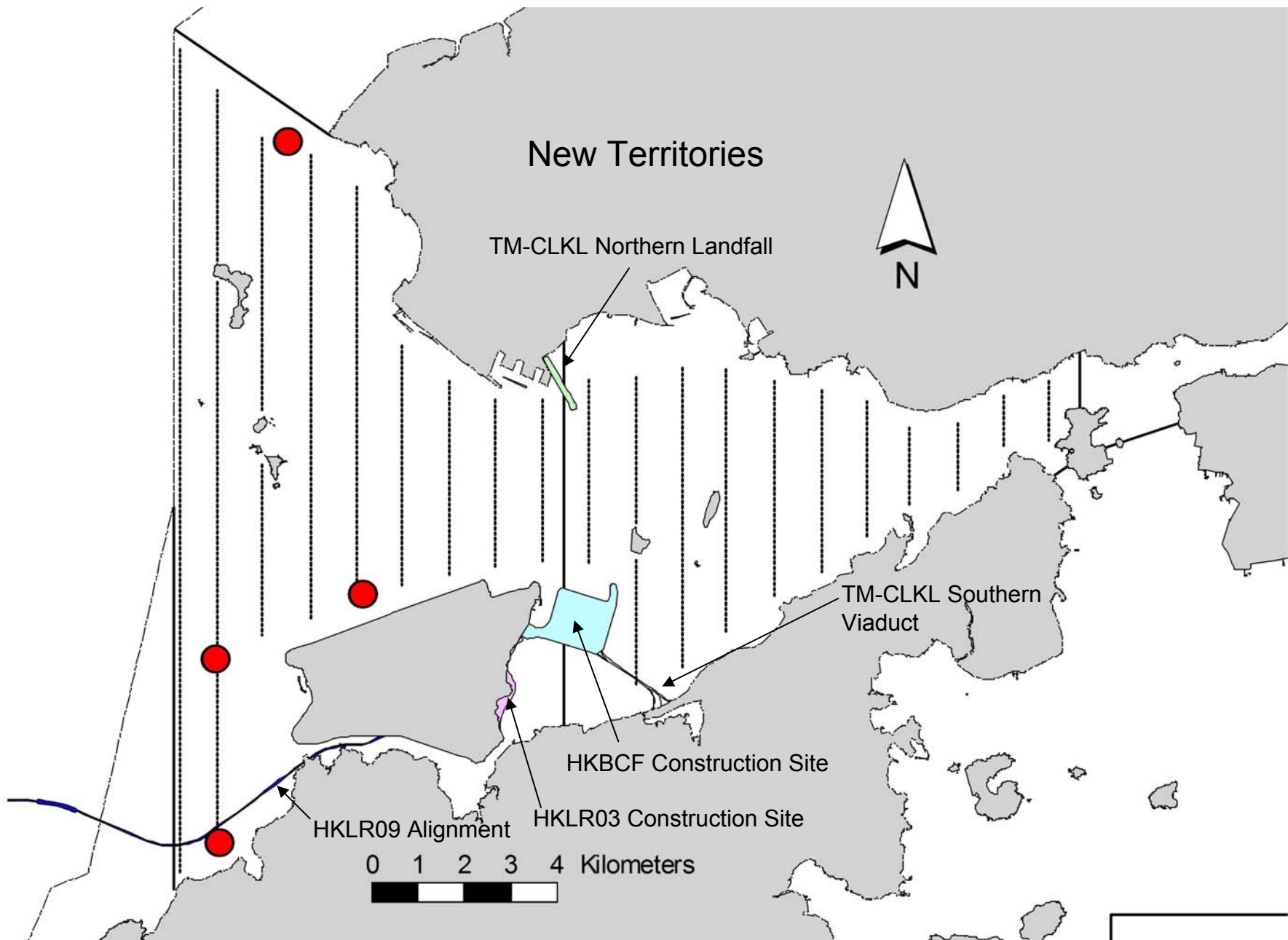


Figure 6. Distribution of Chinese White Dolphin Sightings During March 2015 HKLR03 Monitoring Surveys

## Annex I. HKLR03 Survey Effort Database (March 2015)

(Abbreviations: BEAU = Beaufort Sea State; P = Primary Line Effort; S = Secondary Line Effort)

DATE	AREA	BEAU	EFFORT	SEASON	VESSEL	TYPE	P/S
4-Mar-15	NW LANTAU	1	1.07	SPRING	STANDARD31516	HKLR	P
4-Mar-15	NW LANTAU	2	12.71	SPRING	STANDARD31516	HKLR	P
4-Mar-15	NW LANTAU	3	25.62	SPRING	STANDARD31516	HKLR	P
4-Mar-15	NW LANTAU	4	1.40	SPRING	STANDARD31516	HKLR	P
4-Mar-15	NW LANTAU	2	8.00	SPRING	STANDARD31516	HKLR	S
4-Mar-15	NW LANTAU	3	3.30	SPRING	STANDARD31516	HKLR	S
4-Mar-15	NW LANTAU	4	1.00	SPRING	STANDARD31516	HKLR	S
4-Mar-15	NE LANTAU	2	5.38	SPRING	STANDARD31516	HKLR	P
4-Mar-15	NE LANTAU	3	12.87	SPRING	STANDARD31516	HKLR	P
4-Mar-15	NE LANTAU	2	3.40	SPRING	STANDARD31516	HKLR	S
4-Mar-15	NE LANTAU	3	5.39	SPRING	STANDARD31516	HKLR	S
11-Mar-15	NW LANTAU	2	25.99	SPRING	STANDARD31516	HKLR	P
11-Mar-15	NW LANTAU	3	5.09	SPRING	STANDARD31516	HKLR	P
11-Mar-15	NW LANTAU	2	7.53	SPRING	STANDARD31516	HKLR	S
11-Mar-15	NE LANTAU	2	20.05	SPRING	STANDARD31516	HKLR	P
11-Mar-15	NE LANTAU	2	10.95	SPRING	STANDARD31516	HKLR	S
17-Mar-15	NW LANTAU	2	3.26	SPRING	STANDARD31516	HKLR	P
17-Mar-15	NW LANTAU	3	36.14	SPRING	STANDARD31516	HKLR	P
17-Mar-15	NW LANTAU	4	0.80	SPRING	STANDARD31516	HKLR	P
17-Mar-15	NW LANTAU	2	2.20	SPRING	STANDARD31516	HKLR	S
17-Mar-15	NW LANTAU	3	10.40	SPRING	STANDARD31516	HKLR	S
17-Mar-15	NE LANTAU	2	14.63	SPRING	STANDARD31516	HKLR	P
17-Mar-15	NE LANTAU	3	1.97	SPRING	STANDARD31516	HKLR	P
17-Mar-15	NE LANTAU	1	1.94	SPRING	STANDARD31516	HKLR	S
17-Mar-15	NE LANTAU	2	7.69	SPRING	STANDARD31516	HKLR	S
17-Mar-15	NE LANTAU	3	0.68	SPRING	STANDARD31516	HKLR	S
26-Mar-15	NW LANTAU	1	20.26	SPRING	STANDARD31516	HKLR	P
26-Mar-15	NW LANTAU	2	10.63	SPRING	STANDARD31516	HKLR	P
26-Mar-15	NW LANTAU	2	6.76	SPRING	STANDARD31516	HKLR	S
26-Mar-15	NE LANTAU	1	11.38	SPRING	STANDARD31516	HKLR	P
26-Mar-15	NE LANTAU	2	8.40	SPRING	STANDARD31516	HKLR	P
26-Mar-15	NE LANTAU	1	4.32	SPRING	STANDARD31516	HKLR	S
26-Mar-15	NE LANTAU	2	6.20	SPRING	STANDARD31516	HKLR	S

**Annex II. HKLR03 Chinese White Dolphin Sighting Database (March 2015)**

(Abbreviations: STG# = Sighting Number; HRD SZ = Dolphin Herd Size; BEAU = Beaufort Sea State; PSD = Perpendicular Distance; BOAT ASSOC. = Fishing Boat Association; P/S: Sighting Made on Primary/Secondary Line)

DATE	STG #	TIME	HRD SZ	AREA	BEAU	PSD	EFFORT	TYPE	NORTHING	EASTING	SEASON	BOAT ASSOC.	P/S
04-Mar-15	1	1009	1	NW LANTAU	2	ND	OFF	HKLR	815213	805485	SPRING	NONE	N/A
11-Mar-15	1	1347	1	NW LANTAU	2	ND	OFF	HKLR	829495	806976	SPRING	NONE	N/A
11-Mar-15	2	1519	7	NW LANTAU	2	258	ON	HKLR	818956	805421	SPRING	NONE	P
26-Mar-15	1	1201	3	NW LANTAU	2	21	ON	HKLR	820290	808597	SPRING	NONE	S

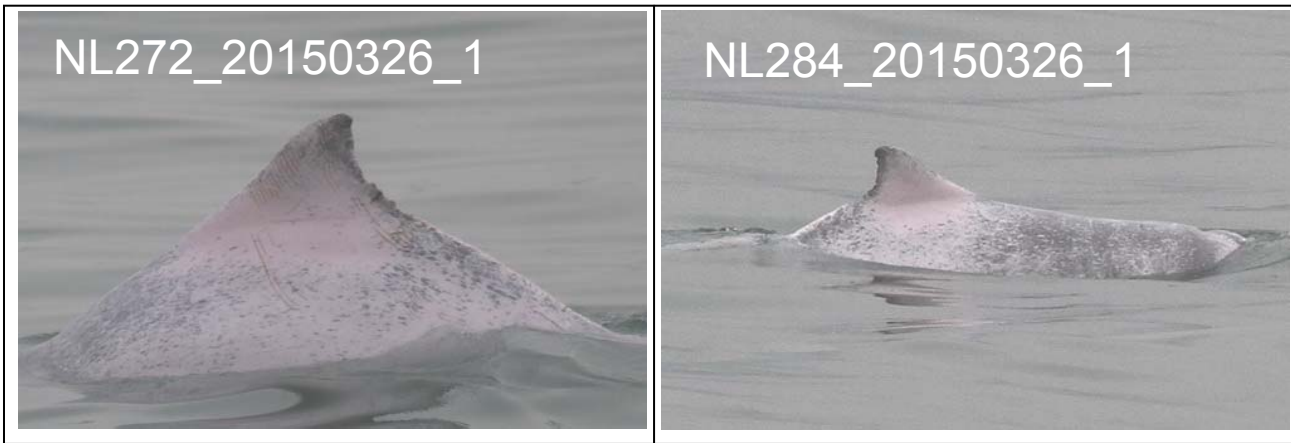


**Annex III. Individual dolphins identified during HKLR03 monitoring surveys in March 2015**

<b>ID#</b>	<b>DATE</b>	<b>STG#</b>	<b>AREA</b>
CH34	11/03/15	1	NW LANTAU
NL49	11/03/15	2	NW LANTAU
NL123	11/03/15	2	NW LANTAU
NL136	11/03/15	2	NW LANTAU
NL165	11/03/15	2	NW LANTAU
NL261	26/03/15	1	NW LANTAU
NL272	26/03/15	1	NW LANTAU
NL284	11/03/15	2	NW LANTAU
	26/03/15	1	NW LANTAU
NL285	11/03/15	2	NW LANTAU
WL178	04/03/15	1	NW LANTAU



Annex IV. Photographs of Identified Individual Dolphins in March 2015 (HKLR03)



Annex IV. (cont'd)