

Figure 1. Transect Line Layout in Northwest and Northeast Lantau Survey Areas

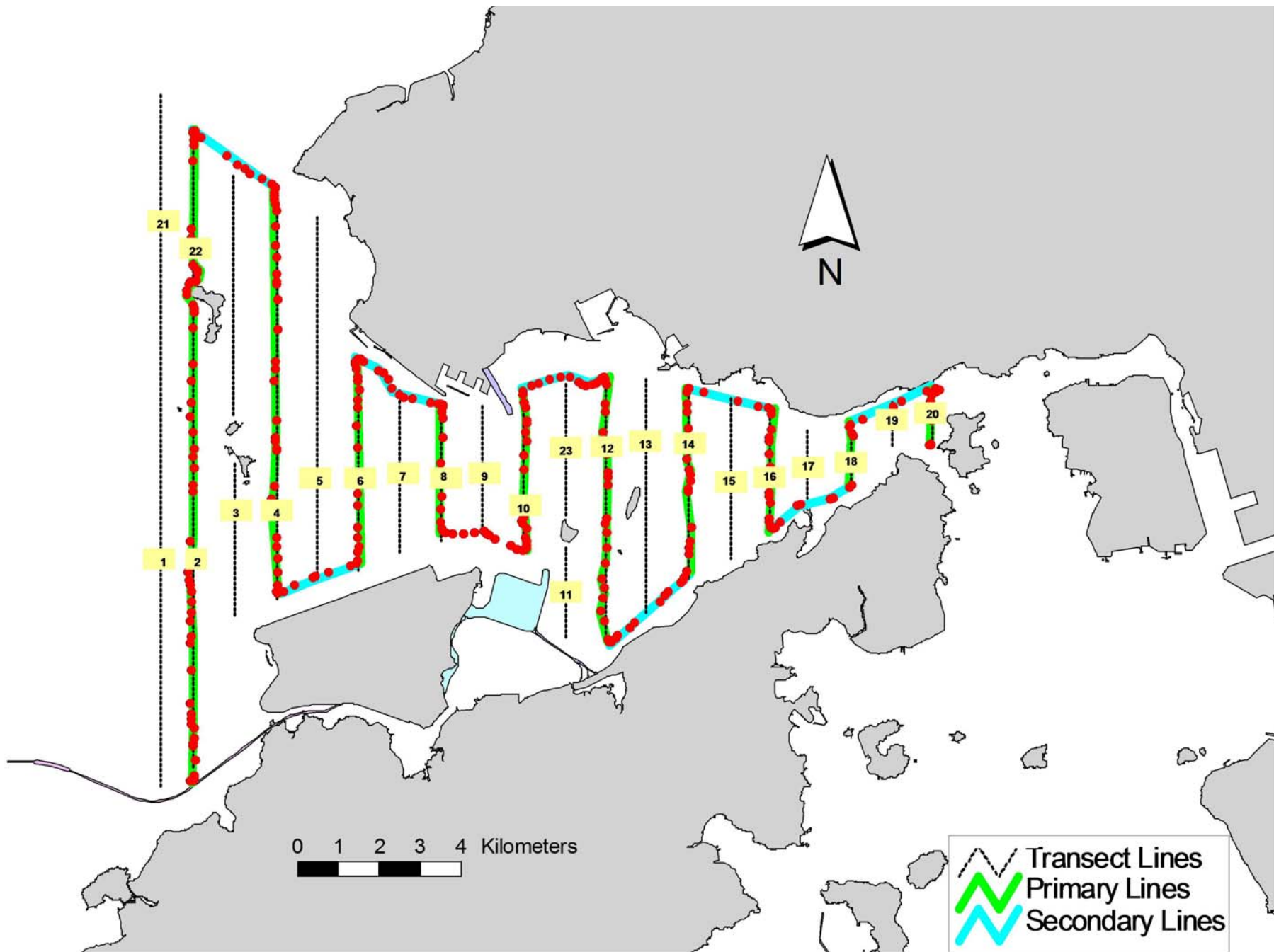


Figure 2. Survey Route on November 2nd, 2016

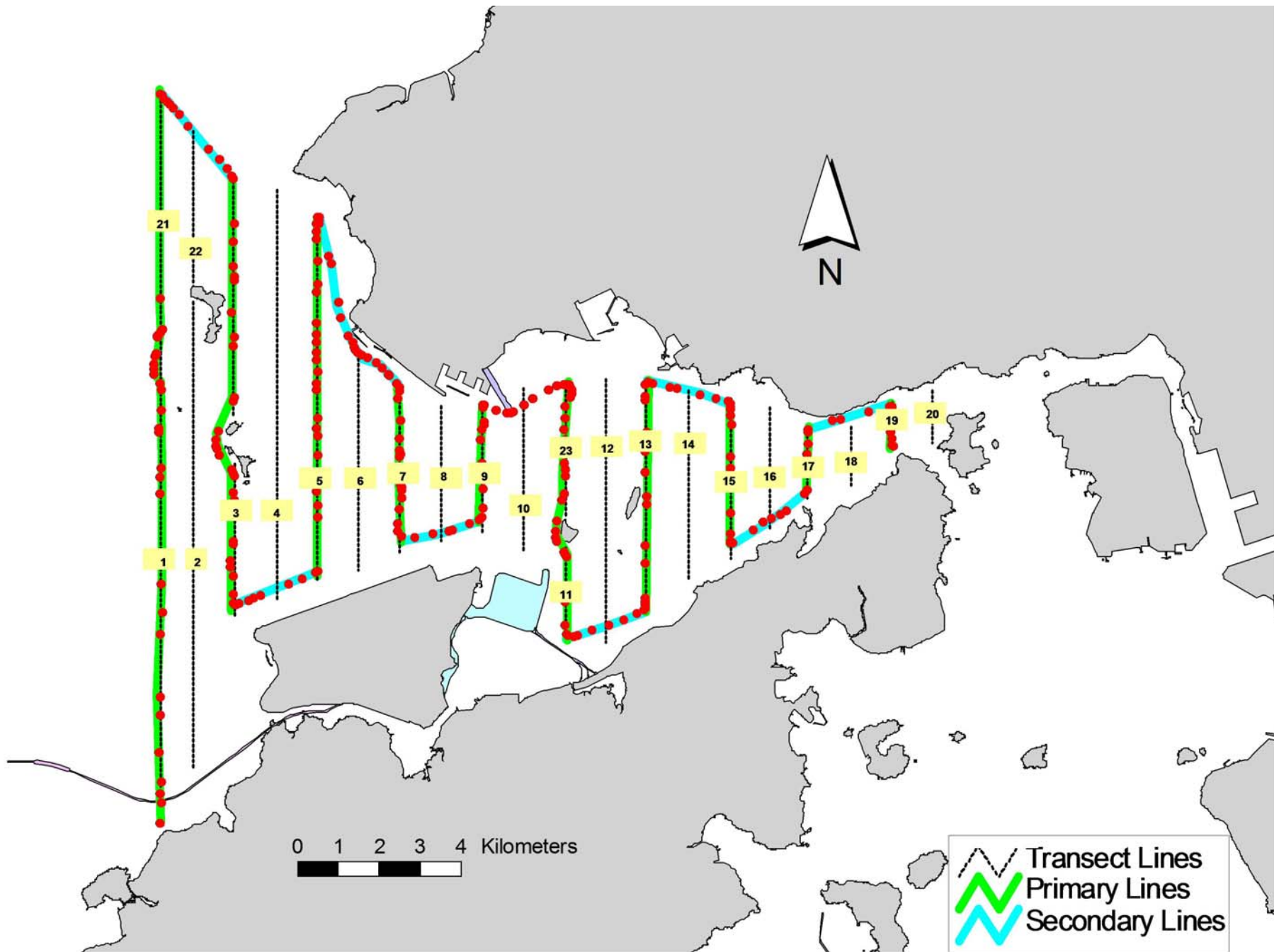


Figure 3. Survey Route on November 7th, 2016

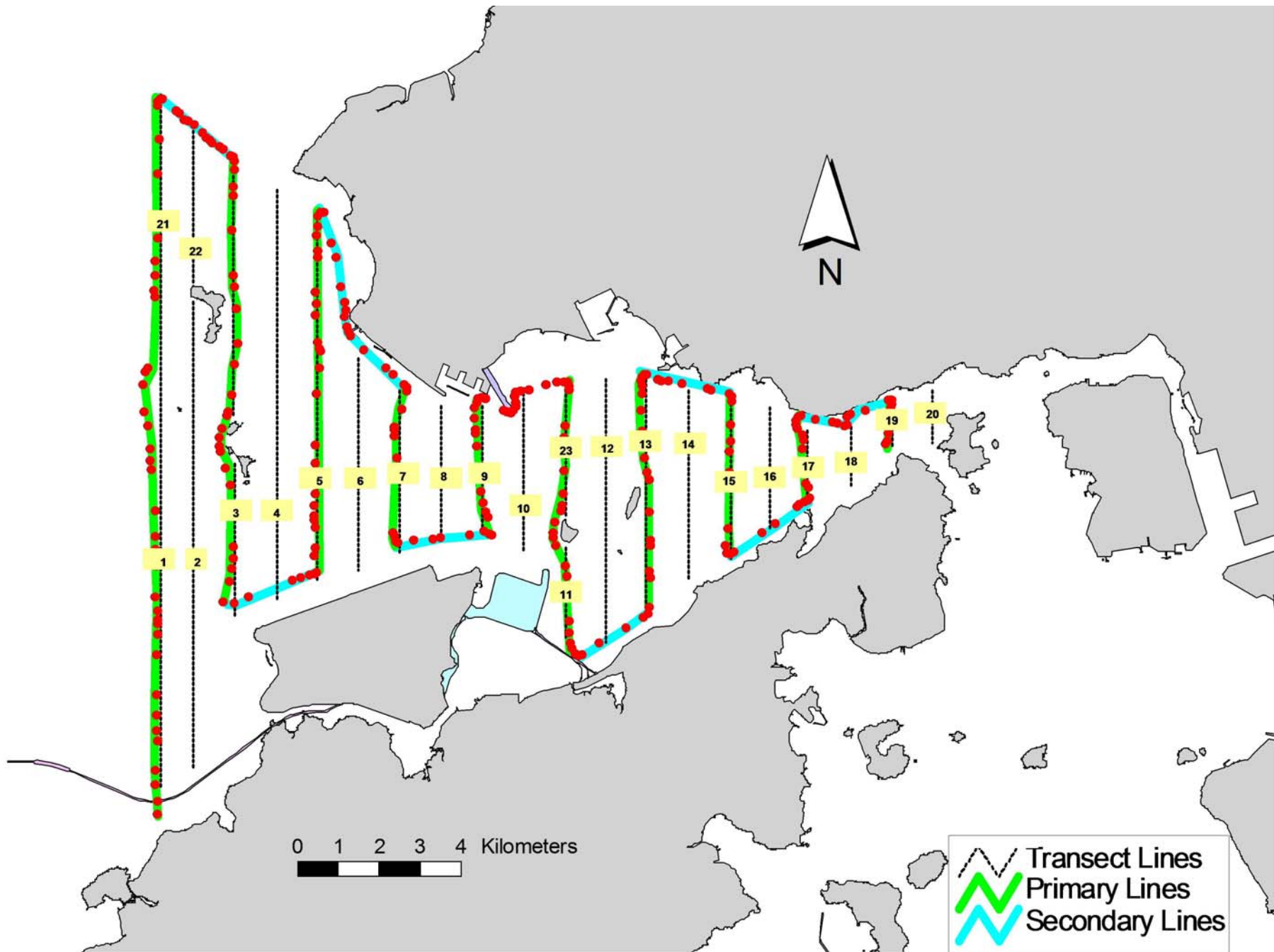


Figure 4. Survey Route on November 18th, 2016

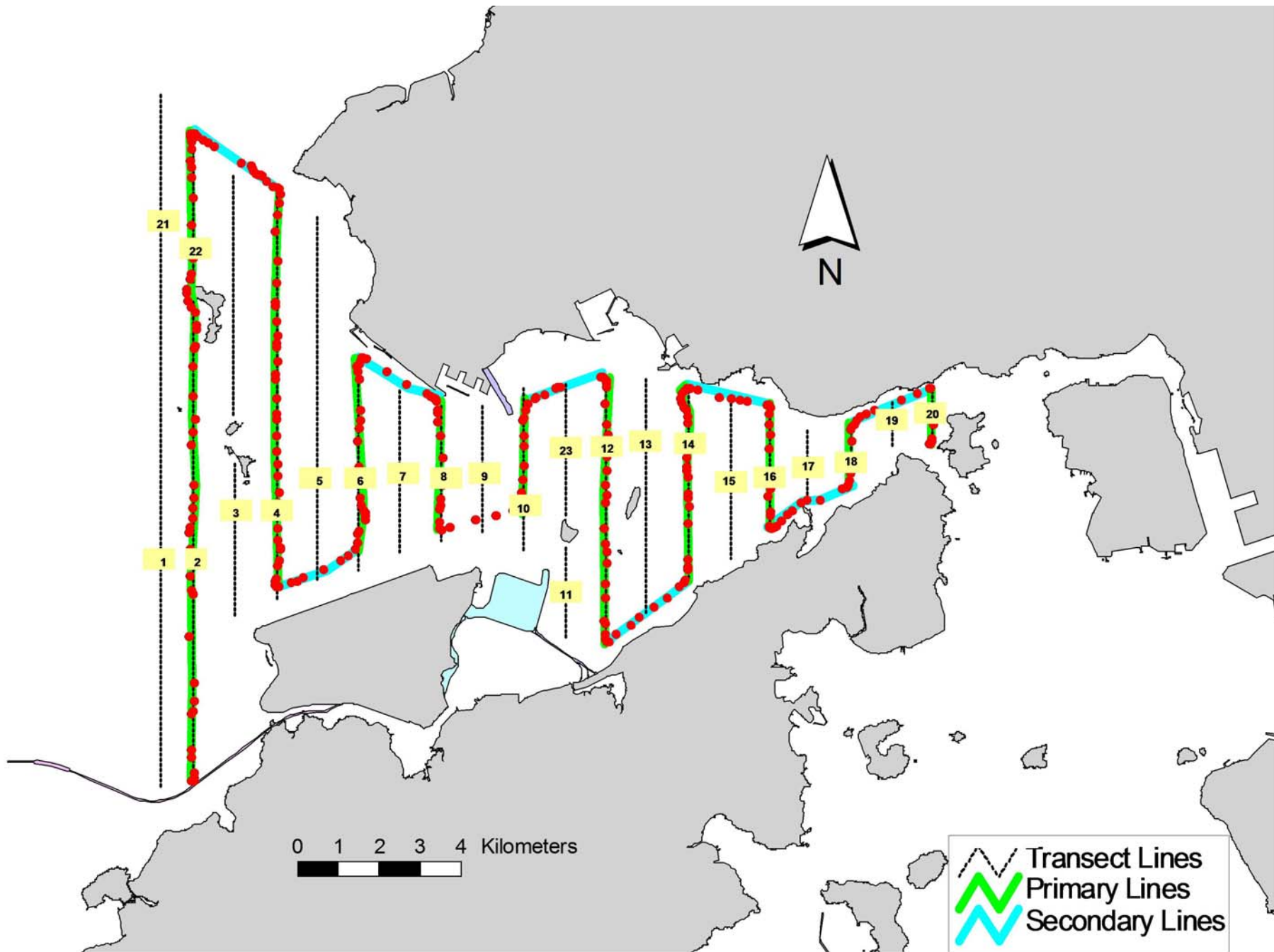


Figure 5. Survey Route on November 22nd, 2016

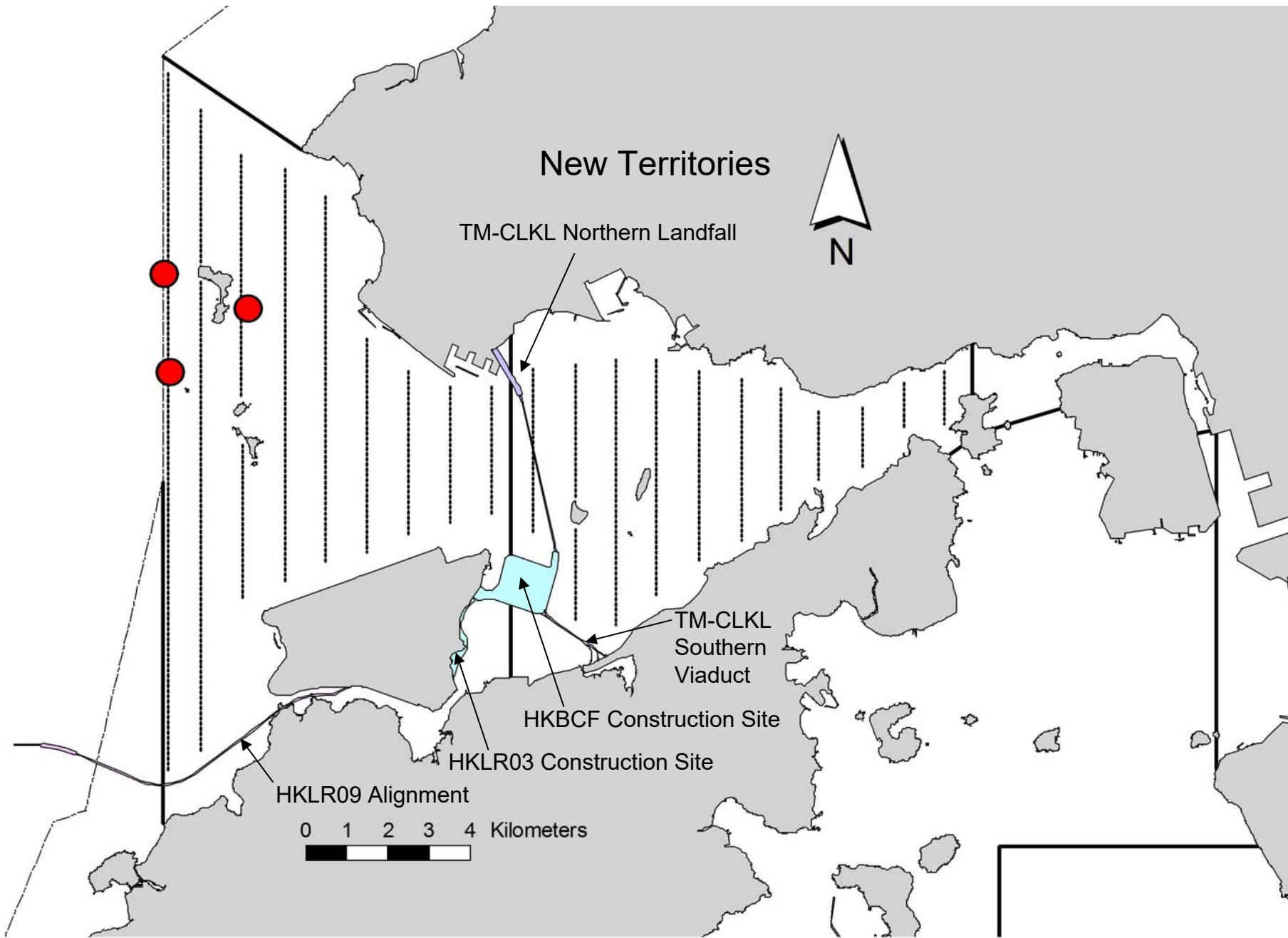


Figure 6. Distribution of Chinese White Dolphin Sightings during November 2016 HKLR03 Monitoring Surveys

Annex I. HKLR03 Survey Effort Database (November 2016)

(Abbreviations: BEAU = Beaufort Sea State; P = Primary Line Effort; S = Secondary Line Effort)

DATE	AREA	BEAU	EFFORT	SEASON	VESSEL	TYPE	P/S
2-Nov-16	NW LANTAU	2	3.00	AUTUMN	STANDARD36826	HKLR	P
2-Nov-16	NW LANTAU	3	19.06	AUTUMN	STANDARD36826	HKLR	P
2-Nov-16	NW LANTAU	4	9.44	AUTUMN	STANDARD36826	HKLR	P
2-Nov-16	NW LANTAU	2	2.50	AUTUMN	STANDARD36826	HKLR	S
2-Nov-16	NW LANTAU	3	5.40	AUTUMN	STANDARD36826	HKLR	S
2-Nov-16	NE LANTAU	2	4.13	AUTUMN	STANDARD36826	HKLR	P
2-Nov-16	NE LANTAU	3	15.46	AUTUMN	STANDARD36826	HKLR	P
2-Nov-16	NE LANTAU	2	4.21	AUTUMN	STANDARD36826	HKLR	S
2-Nov-16	NE LANTAU	3	7.40	AUTUMN	STANDARD36826	HKLR	S
7-Nov-16	NW LANTAU	2	37.21	AUTUMN	STANDARD31516	HKLR	P
7-Nov-16	NW LANTAU	3	0.90	AUTUMN	STANDARD31516	HKLR	P
7-Nov-16	NW LANTAU	2	13.39	AUTUMN	STANDARD31516	HKLR	S
7-Nov-16	NE LANTAU	2	14.34	AUTUMN	STANDARD31516	HKLR	P
7-Nov-16	NE LANTAU	3	1.00	AUTUMN	STANDARD31516	HKLR	P
7-Nov-16	NE LANTAU	2	7.66	AUTUMN	STANDARD31516	HKLR	S
7-Nov-16	NE LANTAU	3	0.80	AUTUMN	STANDARD31516	HKLR	S
18-Nov-16	NW LANTAU	1	1.90	AUTUMN	STANDARD31516	HKLR	P
18-Nov-16	NW LANTAU	2	38.57	AUTUMN	STANDARD31516	HKLR	P
18-Nov-16	NW LANTAU	1	1.70	AUTUMN	STANDARD31516	HKLR	S
18-Nov-16	NW LANTAU	2	11.23	AUTUMN	STANDARD31516	HKLR	S
18-Nov-16	NE LANTAU	2	17.54	AUTUMN	STANDARD31516	HKLR	P
18-Nov-16	NE LANTAU	2	10.66	AUTUMN	STANDARD31516	HKLR	S
22-Nov-16	NE LANTAU	2	17.43	AUTUMN	STANDARD36826	HKLR	P
22-Nov-16	NE LANTAU	3	1.32	AUTUMN	STANDARD36826	HKLR	P
22-Nov-16	NE LANTAU	2	10.95	AUTUMN	STANDARD36826	HKLR	S
22-Nov-16	NW LANTAU	2	29.12	AUTUMN	STANDARD36826	HKLR	P
22-Nov-16	NW LANTAU	3	2.10	AUTUMN	STANDARD36826	HKLR	P
22-Nov-16	NW LANTAU	2	7.58	AUTUMN	STANDARD36826	HKLR	S

Annex II. HKLR03 Chinese White Dolphin Sighting Database (November 2016)

(Abbreviations: STG# = Sighting Number; HRD SZ = Dolphin Herd Size; BEAU = Beaufort Sea State; PSD = Perpendicular Distance; BOAT ASSOC. = Fishing Boat Association; P/S: Sighting Made on Primary/Secondary Line)

DATE	STG #	TIME	HRD SZ	AREA	BEAU	PSD	EFFORT	TYPE	NORTHING	EASTING	SEASON	BOAT ASSOC.	P/S
7-Nov-16	1	1103	1	NW LANTAU	2	211	ON	HKLR	824583	804711	AUTUMN	NONE	P
18-Nov-16	1	1352	7	NW LANTAU	1	99	ON	HKLR	826019	806609	AUTUMN	GILLNET	P
18-Nov-16	2	1459	4	NW LANTAU	2	440	ON	HKLR	826820	804551	AUTUMN	NONE	P

Annex III. Individual dolphins identified during HKLR03 monitoring surveys in November 2016

ID#	DATE	STG#	AREA
CH34	18/11/16	1	NW LANTAU
	18/11/16	2	NW LANTAU
NL136	18/11/16	1	NW LANTAU
	18/11/16	2	NW LANTAU
NL202	18/11/16	1	NW LANTAU
NL220	18/11/16	1	NW LANTAU
NL269	18/11/16	1	NW LANTAU
	18/11/16	2	NW LANTAU
NL320	18/11/16	1	NW LANTAU

CH34_20161118_1



NL136_20161118_1



NL202_20161118_1



NL220_20161118_1



NL269_20161118_1



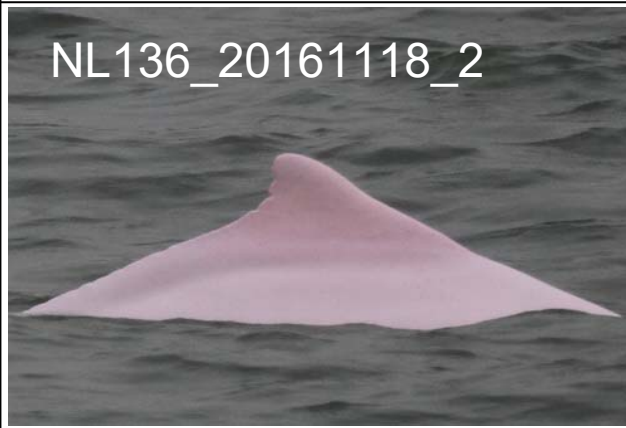
NL320_20161118_1



CH34_20161118_2



NL136_20161118_2



NL269_20161118_2



Annex IV. Photographs of Identified Individual Dolphins in November 2016 (HKLR03)