

- Works Programme
- Works Programme
- Works Programme
- Milestone
- Milestone
- Works Programme

China State Construction Engineering (Hong Kong) Ltd -

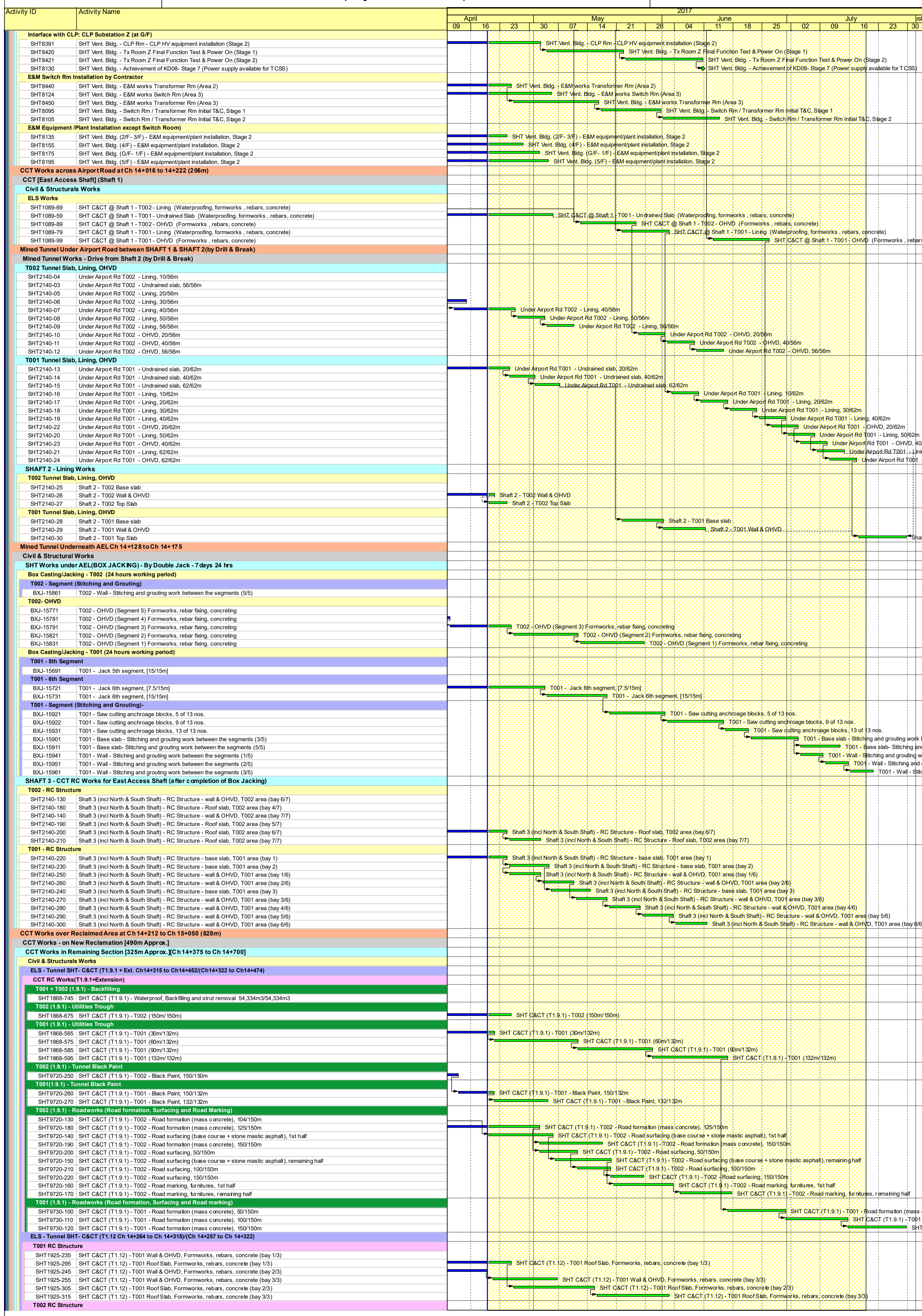
Contract No. HY/2011/03 - HZMB, Hong Kong Link Road

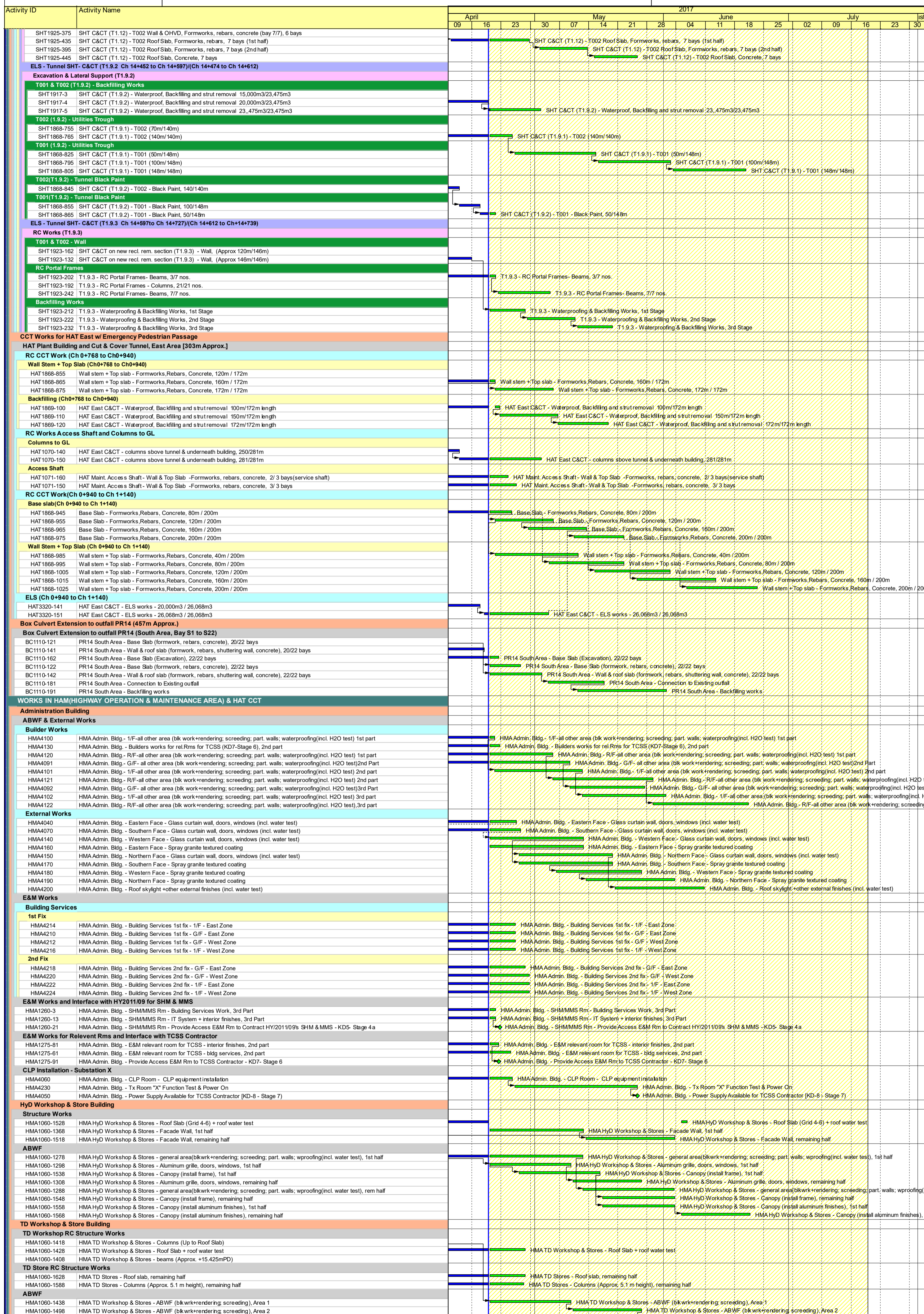
, Section between Scenic Hill and HKBCF

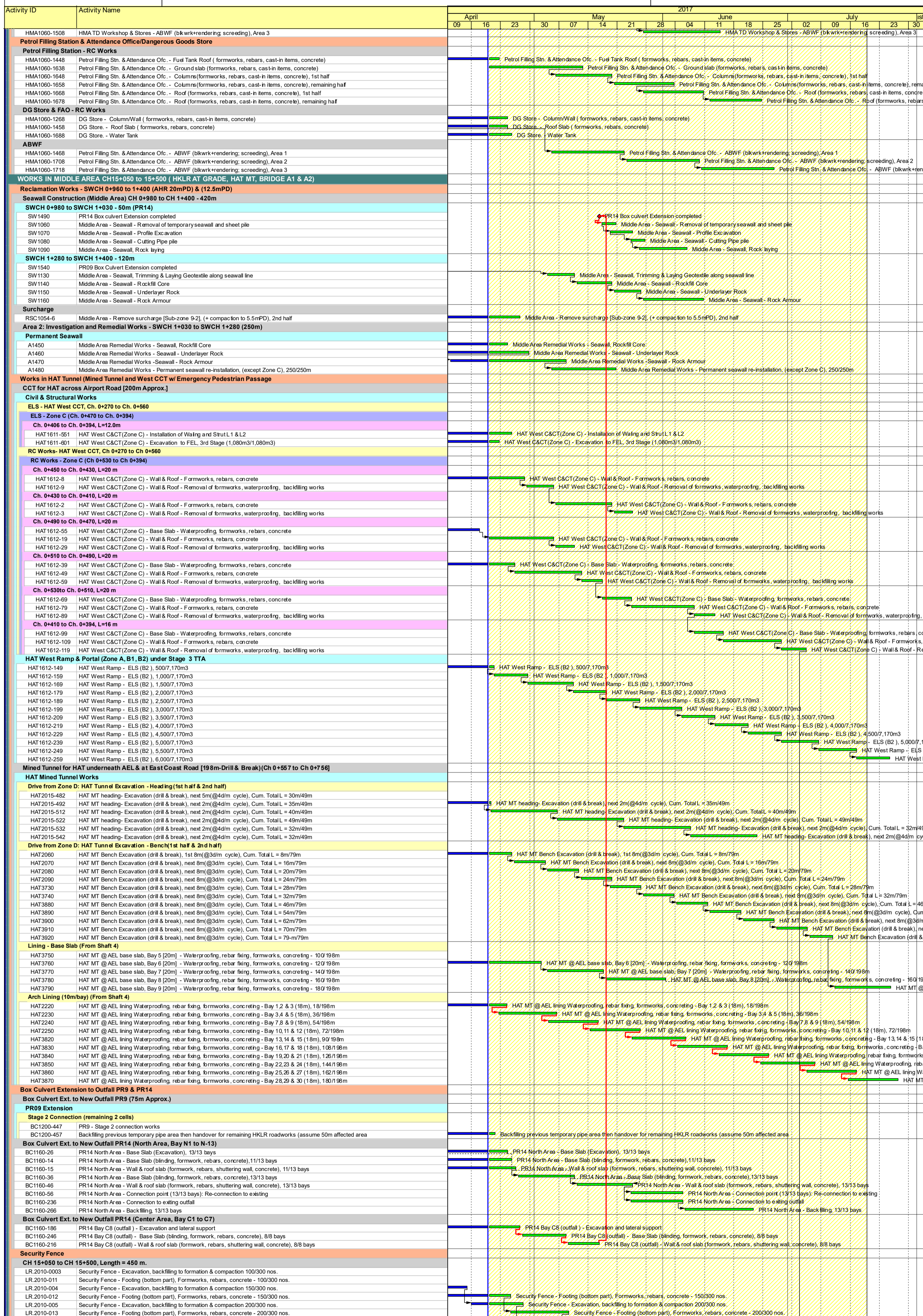
Date	Revision	Checked	Approved
10-May-17		WC	SYT

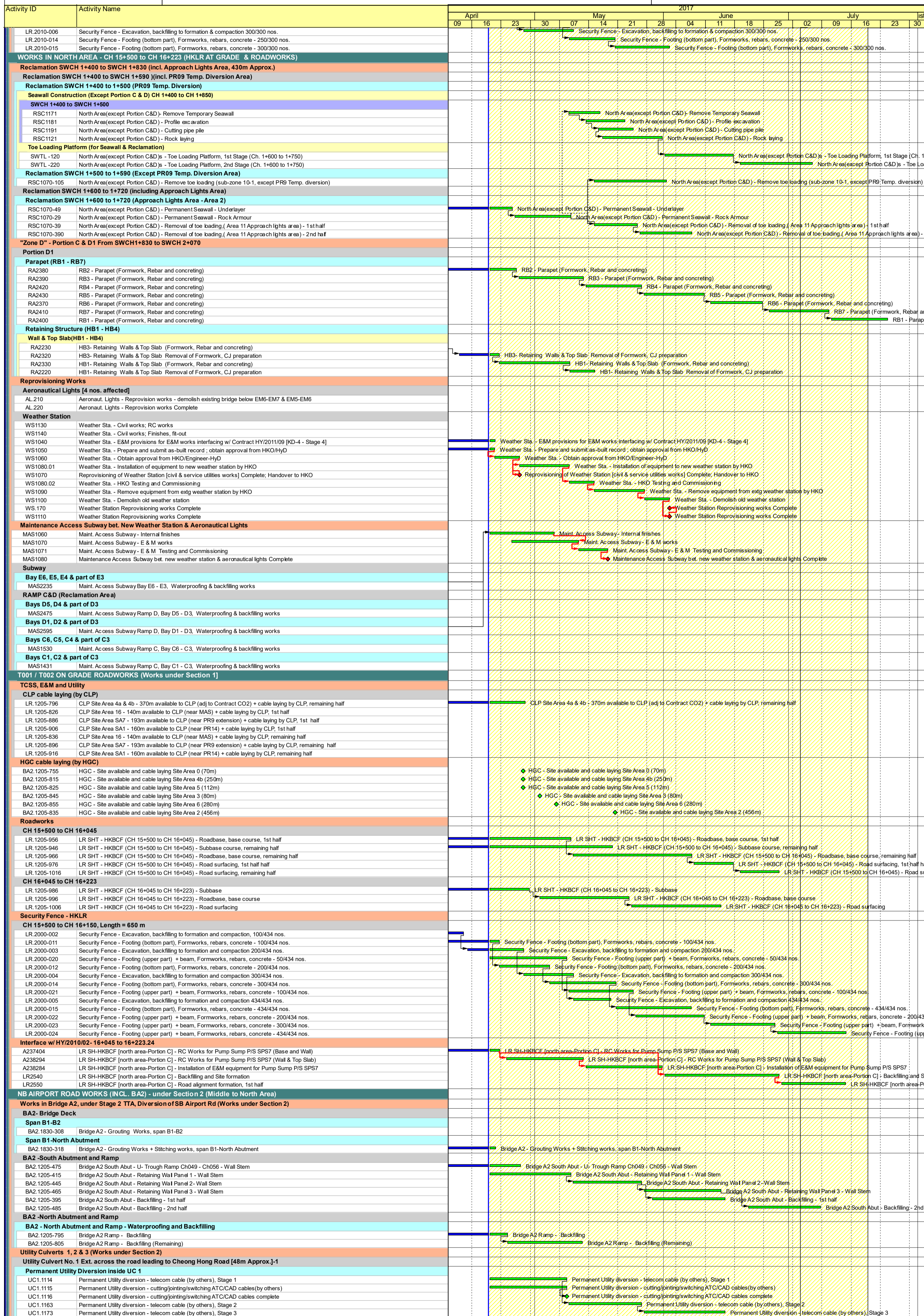
中國建築工程(香港)有限公司

CHINA STATE CONSTRUCTION ENGRG. (HONG KONG) LTD.









Activity ID	Activity Name	2017																	
		April			May					June					July				
		09	16	23	30	07	14	21	28	04	11	18	25	02	09	16	23	30	
Utility Culvert No. 2 Ext. near Bridge A2 [15m Approx.] (Works under Section 2)																			
Permanent Utility Diversion inside UC2																			
UC2.1058	Permanent Utility Diversion - TCSS (by others), Stage 1	[Gantt bar: April 16 - May 14]																	
UC2.1059	Permanent Utility Diversion - CAD/ATC cables (by others), Stage 1	[Gantt bar: April 16 - May 14]																	
UC2.10591	Permanent Utility Diversion - CAD/ATC cables (by others), Stage 2	[Gantt bar: April 23 - May 21]																	
UC2.10581	Permanent Utility Diversion - TCSS (by others), Stage 2	[Gantt bar: April 23 - May 21]																	
UC2.10592	Permanent Utility Diversion - CAD/ATC cables (by others), Stage 2	[Gantt bar: April 23 - May 21]																	
UC2.1061	Complete permanent utility diversion of CAD/ATC cables (by others) - 30 Nov 2013	[Gantt bar: May 28 - June 4]																	
UC2.10582	Permanent Utility Diversion - TCSS (by others), Stage 3	[Gantt bar: June 11 - June 18]																	
UC2.105241	Permanent Utility Diversion - TCSS (by others), Stage 4	[Gantt bar: June 18 - July 6]																	
Roadworks to be constructed under Stage 2 TTA																			
M003 Ch 0+400 to 0+800 (Permanent), L=400m																			
A2860-24	200mm dia Watermain utilities [250m] + connection	[Gantt bar: April 16 - May 14]																	
A2870	Road formation, subbase, road base and precast kerbs, road lighting poles - 1st half	[Gantt bar: April 16 - May 14]																	
A237824	Road formation, subbase, road base and precast kerbs, road lighting poles - 2nd half	[Gantt bar: May 14 - June 11]																	
A2880	Final wearing course and road marking and traffic signs, road lighting lamps & T&C	[Gantt bar: June 11 - June 18]																	
M004 (from BA2) Ch 0+600 to 0+730 (Permanent), L=130m																			
A3370	Drainage works +Underground utilities (watermain, TCSS, telecoms etc.), Stage 2	[Gantt bar: April 16 - May 14]																	
A3460	Drainage works +Underground utilities (watermain, TCSS, telecoms etc.), Stage 3	[Gantt bar: May 14 - June 11]																	
A2920	Drainage works +Underground utilities (watermain, TCSS, telecoms etc.), Stage 4	[Gantt bar: June 11 - June 18]																	
Roadworks to be constructed under Stage 3 TTA																			
M003 Ch 0+800 to 1+200																			
A3050	Drainage works +Underground utilities (watermain, TCSS, telecoms etc.), 100/400m	[Gantt bar: April 16 - May 14]																	
A3340	Road formation, subbase, road base and precast kerbs, road lighting poles, Stage 1	[Gantt bar: April 16 - May 14]																	
A3051	Drainage works +Underground utilities (watermain, TCSS, telecoms etc.), 200/400m	[Gantt bar: May 14 - June 11]																	
A3350	Road formation, subbase, road base and precast kerbs, road lighting poles, Stage 2	[Gantt bar: May 14 - June 11]																	
A3052	Drainage works +Underground utilities (watermain, TCSS, telecoms etc.), 300/400m	[Gantt bar: June 11 - June 18]																	
A3060	Road formation, subbase, road base and precast kerbs, road lighting poles, Stage 3	[Gantt bar: June 11 - June 18]																	
A3053	Drainage works +Underground utilities (watermain, TCSS, telecoms etc.), 400/400m	[Gantt bar: June 18 - July 6]																	
A3470	Final wearing course and road marking and traffic signs, road lighting lamps & T&C, 1st half	[Gantt bar: July 6 - July 13]																	
M005 Ch 0+000 to 0+200, (Permanent) L= 200m (after HAT Ramp)																			
A2950	Drainage works +Underground utilities (watermain, TCSS, telecoms etc.), 50/200m	[Gantt bar: July 13 - July 20]																	
Permanent Slip Road (going NB Airport Rd to T1 & T2)																			
A3010	Drainage works	[Gantt bar: April 16 - May 14]																	
A3020	Underground utilities (watermain, TCSS, telecoms etc.)	[Gantt bar: May 14 - June 11]																	
A3030	Road formation, subbase, road base and precast kerbs, road lighting poles	[Gantt bar: June 11 - June 18]																	
A3040	Final wearing course and road marking and traffic signs, road lighting lamps & T&C	[Gantt bar: June 18 - July 6]																	
Remaining Permanent Roadworks under diff. TTA Schemes																			
M002 connection to existing road																			
A3080	Implement TTA (exact alignment TBC)	[Gantt bar: April 16 - May 14]																	
A3090	Drainage works +Underground utilities (watermain, TCSS, telecoms etc.), 1st half	[Gantt bar: May 14 - June 11]																	
A3091	Drainage works +Underground utilities (watermain, TCSS, telecoms etc.), remaining half	[Gantt bar: June 11 - June 18]																	
A3100	Road formation, subbase, road base and precast kerbs, road lighting poles	[Gantt bar: June 18 - July 6]																	
EAST COAST ROAD WORKS (INCL. BA1 & DEP. RD.) - under Section 2 (Middle to North Area)																			
Works to be constructed under Stage 3 TTA (divert traffic to BA1 & ex. ECR SB RD/ Future M009)																			
Construct M006 (except entrance to ex. Tung Fai Rd)																			
A4610	M006: Drainage works +Underground utilities (watermain, TCSS, telecoms etc.), 2nd half	[Gantt bar: April 16 - May 14]																	
A4620	M006: Road formation, subbase, road base and precast kerbs, road lighting poles	[Gantt bar: May 14 - June 11]																	
A4621	M006: Road formation, subbase, road base and precast kerbs, road lighting poles	[Gantt bar: June 11 - June 18]																	
A4630	M006: Final wearing course and road marking and traffic signs, road lighting lamps & T&C	[Gantt bar: June 18 - July 6]																	
Stage 2 ELS - Permanent Soldier Pile Wall along AEL																			
Utilities Permanent Diversion at BA1/Depressed Rd Area																			
A3840	Permanent utility diversion - telecom cable / CAD cable (by others), 1st Stage	[Gantt bar: April 16 - May 14]																	
A4200	Permanent utility diversion - CLP cable (by CLP), 3rd part	[Gantt bar: April 16 - May 14]																	
A4230	Permanent utility diversion - CLP cable (by CLP), 4th part	[Gantt bar: May 14 - June 11]																	
A3880	Permanent utility diversion - fresh water main (by CSHK), 1st Stage	[Gantt bar: April 16 - May 14]																	
A3900	Permanent utility diversion - gas main (by others), 1st Stage	[Gantt bar: April 16 - May 14]																	
A3850	Permanent utility diversion - TCSS cable (by others), 1st Stage	[Gantt bar: April 16 - May 14]																	
A4240	Permanent utility diversion - CLP cable (by CLP), 5th part	[Gantt bar: May 14 - June 11]																	
A3911	Permanent utility diversion - telecom cable / CAD cable (by others), 2nd Stage	[Gantt bar: May 14 - June 11]																	
A3891	Permanent utility diversion - fresh water main (by CSHK), 2nd Stage	[Gantt bar: May 14 - June 11]																	
A3930	Permanent utility diversion - gas main (by others), 2nd Stage	[Gantt bar: May 14 - June 11]																	
A3921	Permanent utility diversion - TCSS cable (by others), 2nd Stage	[Gantt bar: May 14 - June 11]																	
A3841	Permanent utility diversion - telecom cable / CAD cable (by others), 3rd Stage	[Gantt bar: June 11 - June 18]																	
A4260	Permanent utility diversion - CLP cable (by CLP), 6th part	[Gantt bar: June 11 - June 18]																	
A3901	Permanent utility diversion - gas main (by others), 3rd Stage	[Gantt bar: June 11 - June 18]																	
A3851	Permanent utility diversion - TCSS cable (by others), 3rd Stage	[Gantt bar: June 11 - June 18]																	
A3861	Permanent utility diversion - fresh water main (by CSHK), 3rd Stage	[Gantt bar: June 11 - June 18]																	
A3961	Permanent utility diversion - telecom cable / CAD cable (by others), 4th Stage	[Gantt bar: June 18 - July 6]																	
A3941	Permanent utility diversion - fresh water main (by CSHK), 4th Stage	[Gantt bar: June 18 - July 6]																	
A3951	Permanent utility diversion - gas main (by others), 4th Stage	[Gantt bar: June 18 - July 6]																	
A3971	Permanent utility diversion - TCSS cable (by others), 4th Stage	[Gantt bar: July 6 - July 13]																	
Construction - Permanent Soldier Pile Wall																			
A3960	Permanent soldier pile wall (AEL side) - excavation to formation stage 3/3	[Gantt bar: April 16 - May 14]																	
A4010	Permanent soldier pile wall (AEL side) - capping beam & lagging wall, 1st part	[Gantt bar: May 14 - June 11]																	
A4030	Permanent soldier pile wall (AEL side) - capping beam & lagging wall, 2nd part	[Gantt bar: June 11 - June 18]																	
A4050	Permanent soldier pile wall (AEL side) - capping beam & lagging wall, 3rd part	[Gantt bar: June 18 - July 6]																	
Construct M008, Ch 0+100 to Ch 0+787, L=687m (except Depressed Rd. Area)																			
A4370	M008: Drainage works - 1st 50m	[Gantt bar: April 16 - May 14]																	
A4371	M008: Drainage works - 2nd 50m	[Gantt bar: May 14 - June 11]																	
A4372	M008: Drainage works - 3rd 50m	[Gantt bar: June 11 - June 18]																	
A4373	M008: Drainage works - 4th 50m	[Gantt bar: June 18 - July 6]																	
A4374	M008: Drainage works - 5th 50m	[Gantt bar: July 6 - July 13]																	
Underground utilities																			
A237934	M008: Underground utilities (watermain, CLP), 1st 50m	[Gantt bar: April 16 - May 14]																	
A237974	M008: Underground utilities (watermain, CLP), 2nd 50m	[Gantt bar: May 14 - June 11]																	
A237984	M008: Underground utilities (watermain, CLP), 3rd 50m	[Gantt bar: June 11 - June 18]																	
A237994	M008: Underground utilities (watermain, CLP), 4th 50m	[Gantt bar: June 18 - July 6]																	
A238004	M008: Underground utilities (watermain, CLP), 5th 50m	[Gantt bar: July 6 - July 13]																	
Construct M007 Ch. 0+100 to Ch. 0+483, L=383m																			
A4720	M007: 1st Half: Drainage works +Underground utilities (watermain), 2nd 50m	[Gantt bar: April 16 - May 14]																	
A4730	M007: 1st Half: Drainage works +Underground utilities (watermain), 3rd 50m	[Gantt bar: May 14 - June 11]																	
A4900	M007: 1st Half: Drainage works +Underground utilities (watermain), 4th 50m	[Gantt bar: June 11 - June 18]																	
Construct Remaining M009 and M010 (at North Area)																			
Construct M009 Ch 0+700 to Ch 1+050, L= 350m																			
A4790	M009: Drainage works 60m/350m	[Gantt bar: April 16 - May 14]																	
A238054	M009: Drainage works 120m/350m	[Gantt bar: May 14 - June 11]																	
A238064	M009: Drainage works 180m/350m	[Gantt bar: June 11 - June 18]																	
A238074	M009: Drainage works 240m/350m	[Gantt bar: June 18 - July 6]																	
A238084	M009: Drainage works 300m/350m	[Gantt bar: July 6 - July 13]																	
A238094	M009: Drainage works 350m/350m	[Gantt bar: July 13 - July 20]																	
Construct M009 Ch 1+050 to Ch 1+415, L= 365m																			
A238104	M009: Drainage works 350m/365m	[Gantt bar: July 20 - July 27]																	
Construct M010 Ch 0+700 to Ch 1+050, L= 350m																			
A4750	M010: Drainage works 60m/350m	[Gantt bar: April 16 - May 14]																	
A238164	M010: Drainage works 120m/350m	[Gantt bar: May 14 - June 11]																	
A238174	M010: Drainage works 180m/350m	[Gantt bar: June 11 - June 18]																	
A238184	M010: Drainage works 240m/350m	[Gantt bar: June 18 - July 6]																	
A238194	M010: Drainage works 300m/350m	[Gantt bar: July 6 - July 13]																	
A238204	M010: Drainage works 350m/350m	[Gantt bar: July 13 - July 20]																	