

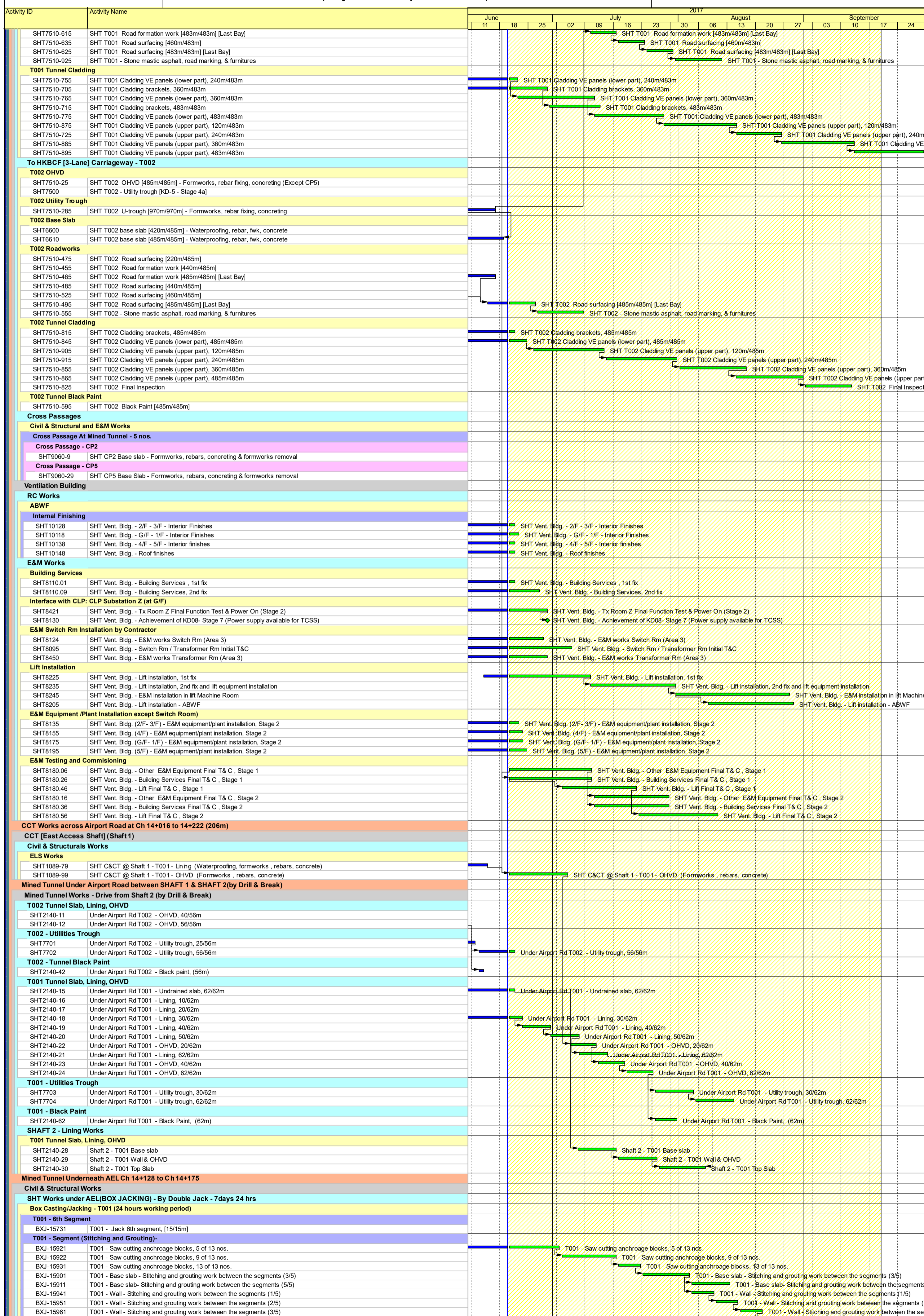
■	Works Programme
■	Works Programme
■	Works Programme
◆	Milestone
◆	Milestone
◆	Milestone

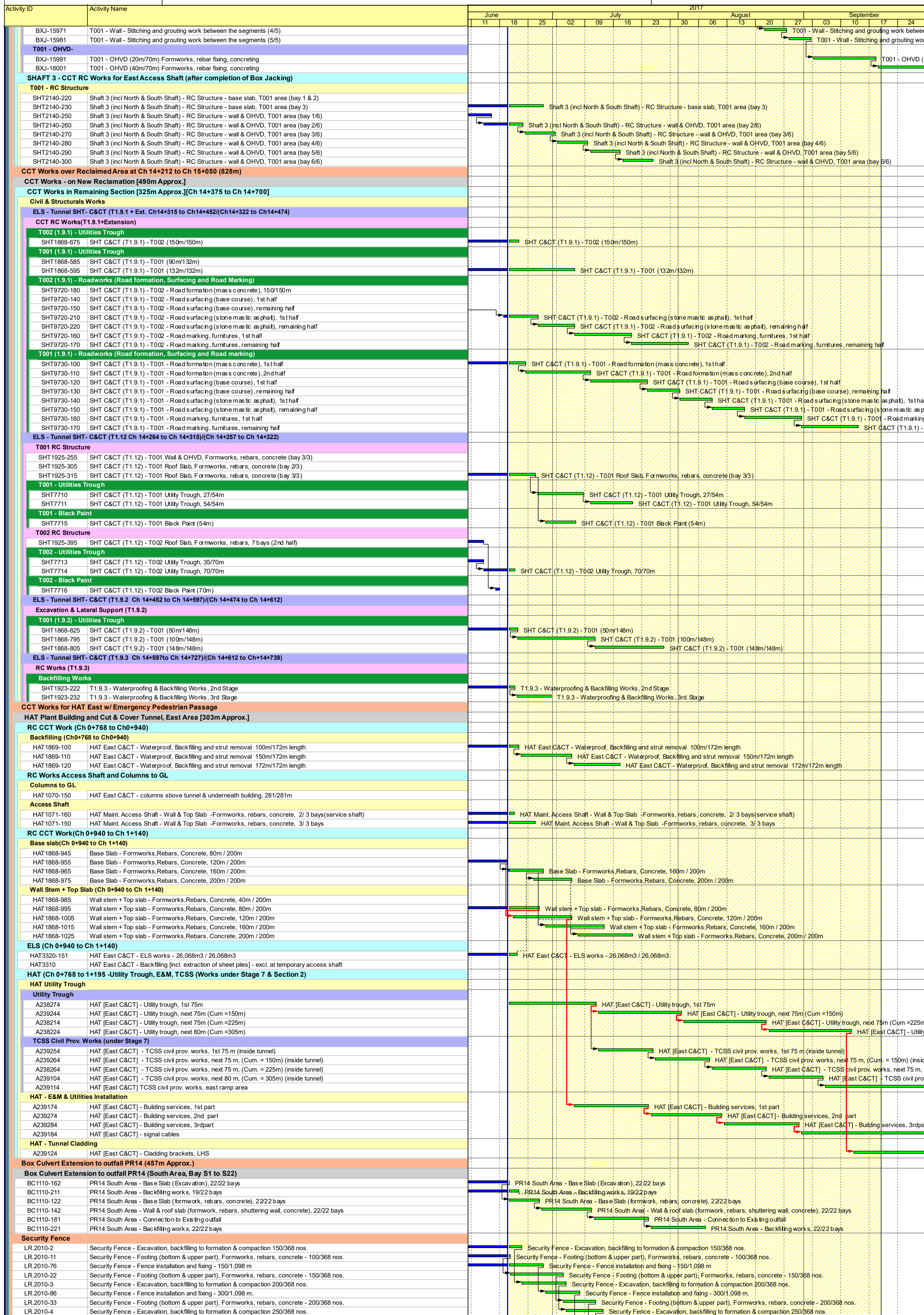
China State Construction Engineering (Hong Kong) Ltd -
Contract No. HY/2011/03 - HZMB, Hong Kong Link Road
, Section between Scenic Hill and HKBCF

Prepared by MM			
Date	Revision	Checked	Approved
08-Jul-17		WC	SYT

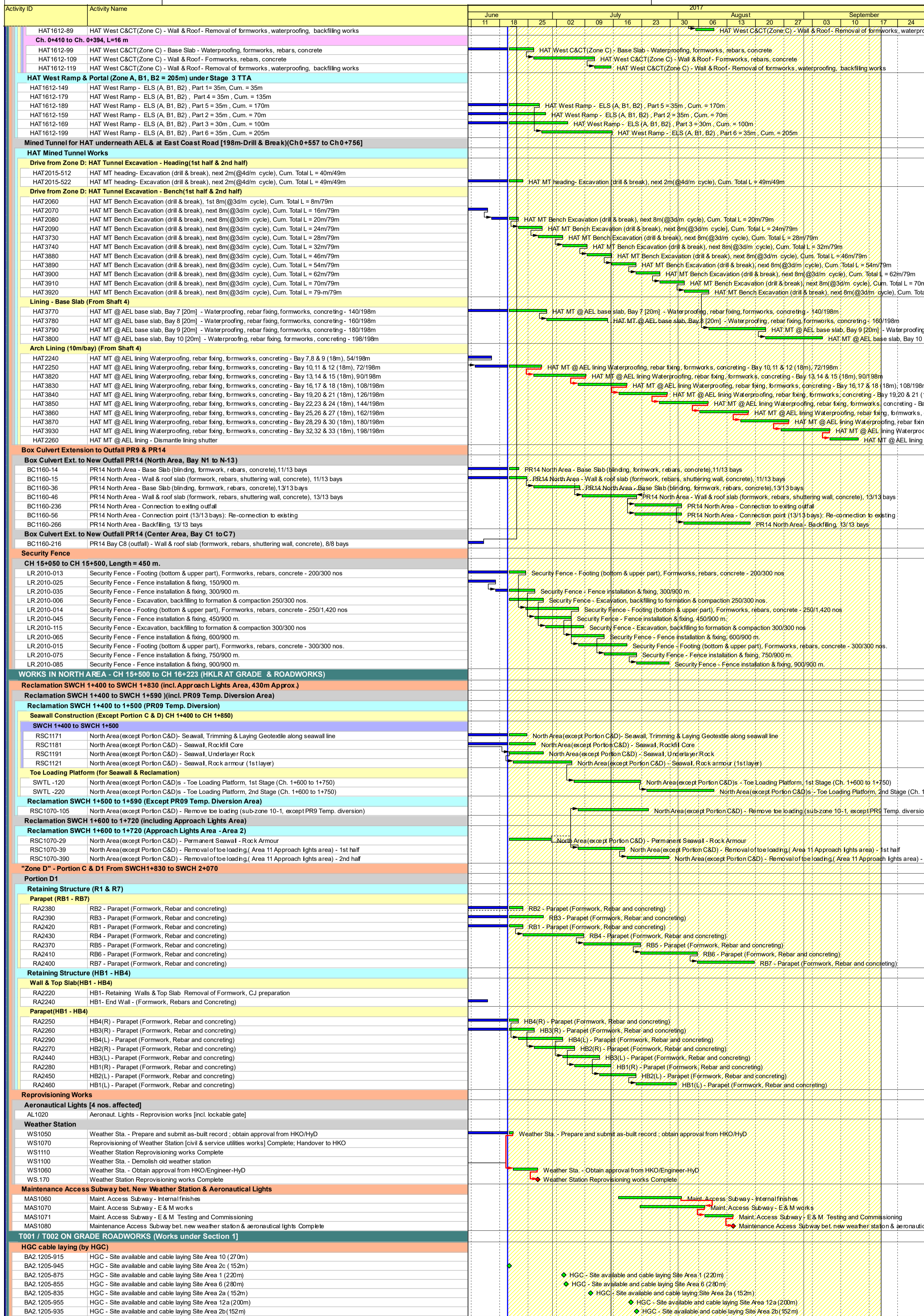


(July 2017 to September 2017)





(July 2017 to September 2017)



Activity ID	Activity Name	2017															
		June			July			August			September						
		11	18	25	02	09	16	23	30	06	13	20	27	03	10	17	24
BA2.1205-825	HGC - Site available and cable laying Site Area 5 (112m)																
BA2.1205-905	HGC - Site available and cable laying Site Area 9 (165m)																
BA2.1205-965	HGC - Site available and cable laying Site Area 12b (237m)																
BA2.1205-975	HGC - Site available and cable laying Site Area 12c (240m)																
BA2.1205-925	HGC - Site available and cable laying Site Area 11 (142m)																
BA2.1205-885	HGC - Site available and cable laying Site Area 7 (110m)																
BA2.1205-895	HGC - Site available and cable laying Site Area 8 (110m)																
BA2.1205-845	HGC - Site available and cable laying Site Area 3 (80m)																
Roadworks																	
CH 15+500 to CH 16+045																	
LR.1205-956	LR SHT - HKBCF (CH 15+500 to CH 16+045) - Roadbase, base course, 1st half																
LR.1205-946	LR SHT - HKBCF (CH 15+500 to CH 16+045) - Subbase course, remaining half																
LR.1205-966	LR SHT - HKBCF (CH 15+500 to CH 16+045) - Roadbase, base course, remaining half																
LR.1205-976	LR SHT - HKBCF (CH 15+500 to CH 16+045) - Road surfacing, 1st half																
LR.1205-1016	LR SHT - HKBCF (CH 15+500 to CH 16+045) - Road surfacing, remaining half																
CH 16+045 to CH 16+223																	
LR.1205-996	LR SHT - HKBCF (CH 16+045 to CH 16+223) - Roadbase, base course																
LR.1205-1006	LR SHT - HKBCF (CH 16+045 to CH 16+223) - Road surfacing																
Security Fence - HKLR																	
CH 15+500 to CH 16+150, Length = 650 m																	
LR.2000-011	Security Fence - Footing (bottom part), Formworks, rebar, concrete - 100/434 nos.																
LR.2000-003	Security Fence - Excavation, backfilling to formation and compaction 200/434 nos.																
LR.2000-034	Security Fence - Fence installation and fixing, 150/1,296 m																
LR.2000-020	Security Fence - Footing (upper part) + beam, Formworks, rebar, concrete - 50/434 nos.																
LR.2000-012	Security Fence - Footing (bottom part), Formworks, rebar, concrete - 200/434 nos.																
LR.2000-044	Security Fence - Fence installation and fixing, 300/1,296 m																
LR.2000-004	Security Fence - Excavation, backfilling to formation and compaction 300/434 nos.																
LR.2000-014	Security Fence - Footing (bottom part), Formworks, rebar, concrete - 300/434 nos.																
LR.2000-054	Security Fence - Fence installation and fixing, 450/1,296 m																
LR.2000-021	Security Fence - Footing (upper part) + beam, Formworks, rebar, concrete - 100/434 nos.																
LR.2000-005	Security Fence - Excavation, backfilling to formation and compaction 434/434 nos.																
LR.2000-064	Security Fence - Fence installation and fixing, 600/1,296 m																
LR.2000-015	Security Fence - Footing (bottom part), Formworks, rebar, concrete - 434/434 nos.																
LR.2000-074	Security Fence - Fence installation and fixing, 750/1,296 m																
LR.2000-022	Security Fence - Footing (upper part) + beam, Formworks, rebar, concrete - 200/434 nos.																
LR.2000-084	Security Fence - Fence installation and fixing, 900/1,296 m																
LR.2000-094	Security Fence - Fence installation and fixing, 1,050/1,296 m																
LR.2000-023	Security Fence - Footing (upper part) + beam, Formworks, rebar, concrete - 300/434 nos.																
LR.2000-104	Security Fence - Fence installation and fixing, 1,296/1,296 m																
LR.2000-024	Security Fence - Footing (upper part) + beam, Formworks, rebar, concrete - 434/434 nos.																
Interface w/ HY/2010/02-16+045 to 16+223.24																	
A237404	LR SH-HKBCF [north area-Portion C] - RC Works for Pump Sump P/S SPS7 (Base and Wall)																
A238294	LR SH-HKBCF [north area-Portion C] - RC Works for Pump Sump P/S SPS7 (Wall & Top Slab)																
A238284	LR SH-HKBCF [north area-Portion C] - Installation of E&M equipment for Pump Sump P/S SPS7																
LR2540	LR SH-HKBCF [north area-Portion C] - Backfilling and Site formation																
LR2550	LR SH-HKBCF [north area-Portion C] - Road alignment formation, 1st half																
NB AIRPORT ROAD WORKS (INCL. BA2) - under Section 2 (Middle to North Area)																	
Works in Bridge A2, under Stage 2 TTA, Diversion of SB Airport Rd (Works under Section 2)																	
BA2 - South Abutment and Ramp																	
BA2.1205-415	Bridge A2 South Abut - Retaining Wall Panel 1 - Wall Stem																
BA2.1205-445	Bridge A2 South Abut - Retaining Wall Panel 2 - Wall Stem																
BA2.1205-465	Bridge A2 South Abut - Retaining Wall Panel 3 - Wall Stem																
BA2.1205-495	Bridge A2 South Abut - Retaining Wall Panel 4 - Wall Stem																
BA2.1205-395	Bridge A2 South Abut - Backfilling - 1st half																
BA2.1205-485	Bridge A2 South Abut - Backfilling - 2nd half																
BA2 - North Abutment and Ramp																	
BA2 - North Abutment and Ramp - Waterproofing and Backfilling																	
BA2.1205-1005	Bridge A2 Ramp - North Abut. Parapet, 40nos/80 nos.																
BA2.1205-1015	Bridge A2 Ramp - North Abut. Parapet, 60nos/80 nos.																
BA2.1205-805	Bridge A2 Ramp - Backfilling (Remaining)																
BA2.1205-1025	Bridge A2 Ramp - North Abut. Parapet, 80nos/80 nos.																
BA2.1205-1035	Bridge A2 Ramp - North Abut. Road lighting, 1st half																
BA2.1205-1045	Bridge A2 Ramp - North Abut. Road lighting, remaining half																
Utility Culverts 1, 2 & 3 (Works under Section 2)																	
Utility Culvert No. 1 Ext. across the road leading to Cheong Hong Road [48m Approx.] -1																	
Permanent Utility Diversion inside UC 1																	
UC1.1114	Permanent Utility diversion - telecom cable (by others), Stage 1																
UC1.1115	Permanent Utility diversion - cutting/jointing/switching ATC/CAD cables (by others)																
UC1.1116	Permanent Utility diversion - cutting/jointing/switching ATC/CAD cables complete																
UC1.1163	Permanent Utility diversion - telecom cable (by others), Stage 2																
UC1.1173	Permanent Utility diversion - telecom cable (by others), Stage 3																
Utility Culvert No. 2 Ext. near Bridge A2 [15m Approx.] (Works under Section 2)																	
Permanent Utility Diversion inside UC2																	
UC2.1059	Permanent Utility Diversion - CAD/ATC cables (by others), Stage 1																
UC2.1058	Permanent Utility Diversion - TCSS (by others), Stage 1																
UC2.10591	Permanent Utility Diversion - CAD/ATC cables (by others), Stage 2																
UC2.10581	Permanent Utility Diversion - TCSS (by others), Stage 2																
UC2.10592	Permanent Utility Diversion - CAD/ATC cables (by others), Stage 2																
UC2.1061	Complete permanent utility diversion of CAD/ATC cables (by others) -30 Nov 2013																
UC2.10582	Permanent Utility Diversion - TCSS (by others), Stage 3																
UC2.105241	Permanent Utility Diversion - TCSS (by others), Stage 4																
Roadworks to be constructed under Stage 2 TTA																	
M003 Ch 0+400 to 0+800 (Permanent), L=400m																	
A2860-24	200mm dia Watermain utilities [250m] + connection																
A2870	Road formation, subbase, road base and precast kerbs, road lighting poles - 1st half																
A237824	Road formation, subbase, road base and precast kerbs, road lighting poles - 2nd half																
A2880	Final wearing course and road marking and traffic signs, road lighting lamps & T&C																
M004 (from BA2) Ch 0+600 to 0+730 (Permanent), L=130m																	
A3370	Drainage works +Underground utilities (watermain, TCSS, telecoms etc.), Stage 2																
A3460	Drainage works +Underground utilities (watermain, TCSS, telecoms etc.), Stage 3																
A2920	Drainage works +Underground utilities (watermain, TCSS, telecoms etc.), Stage 4																
Roadworks to be constructed under Stage 3 TTA																	
M003 Ch 0+800 to 1+200																	
A3050	Drainage works +Underground utilities (watermain, TCSS, telecoms etc.), 100/400m																
A3340	Road formation, subbase, road base and precast kerbs, road lighting poles, Stage 1																
A3051	Drainage works +Underground utilities (watermain, TCSS, telecoms etc.), 200/400m																
A3350	Road formation, subbase, road base and precast kerbs, road lighting poles, Stage 2																
A3052	Drainage works +Underground utilities (watermain, TCSS, telecoms etc.), 300/400m																
A3060	Road formation, subbase, road base and precast kerbs, road lighting poles, Stage 3																
A3053	Drainage works +Underground utilities (watermain, TCSS, telecoms etc.), 400/400m																
A3470	Final wearing course and road marking and traffic signs, road lighting lamps & T&C, 1st half																
M005 Ch 0+000 to 0+200, (Permanent) L= 200m (after HAT Ramp)																	
A2950	Drainage works +Underground utilities (watermain, TCSS, telecoms etc.), 50/200m																
A2960	Road formation, subbase, road base and precast kerbs, road lighting poles																
A2951	Drainage works +Underground utilities (watermain, TCSS, telecoms etc.), 50/200m																
A2952	Drainage works +Underground utilities (watermain, TCSS, telecoms etc.), 50/200m																
A2953	Drainage works +Underground utilities (watermain, TCSS, telecoms etc.), 50/200m																
M011 Ch 0+350 to 0+546, (Permanent) L= 196m																	
A2980	Drainage works +Underground utilities (watermain, TCSS, telecoms etc.), 50/196m																
A2990	Road formation, subbase, road base and precast kerbs, road lighting poles																
A2981	Drainage works +Underground utilities (watermain, TCSS, telecoms etc.), 50/196m																
Permanent Slip Road (going NB Airport Rd to T1 & T2)																	
A3010	Drainage works																
A3020	Underground utilities (watermain, TCSS, telecoms etc.)																
A3030	Road formation, subbase, road base and precast kerbs, road lighting poles																
A3040	Final wearing course and road marking and traffic signs, road lighting lamps & T&C																
Remaining Permanent Roadworks under diff. TTA Schemes																	
M002 connection to existing road																	
A3080	Implement TTA (exact alignment TBC)																
A3090	Drainage works +Underground utilities (watermain, TCSS, telecoms etc.), 1st half																
A3091	Drainage works +Underground utilities (watermain, TCSS, telecoms etc.), remaining half																
A3100	Road formation, subbase, road base and precast kerbs, road lighting poles																

