

**Contract No. HY/2011/03 -
 Hong Kong- Zhuhai- Macao Bridge
 Hong Kong Link Road Section between Scenic Hill and Hong Kong Boundary Crossing Facilities
 Notifications of Environmental Quality Limits Exceedances** Notification No.: 278a ver 1

Date of Notification: 13 June 2018

Works Inspected: 24-hr TSP monitoring was undertaken on 1 June 2018 and the test report was issued on 11 June 2018.

Monitoring Location: AMS6 – Dragonair Building

Parameter: 24-hour TSP monitoring

Action & Limit Level (AL & LL) / Measured Level:

PARAMETER	STATION	AL ($\mu\text{g}/\text{m}^3$)	LL ($\mu\text{g}/\text{m}^3$)	MEASURED LEVEL, $\mu\text{g}/\text{m}^3$
1 June 2018, 24-hr TSP (8:00 – 8:00 hours)	Dragonair Building (AMS6)	173	260	<u>382</u>

Notes: ***Bold Italic*** means AL exceedance
Bold Italic with underline means LL exceedance

Possible reason for Limit Level Non-compliance:

A Limit Level exceedance of 24-hr TSP level was recorded at AMS6 - Dragonair Building on 1 June 2018.

According to the information provided by the Contractor, landscaping works were conducted at construction site S16 which is located near AMS6 during the sampling period on 1 June 2018. Figure 1 shows the location of construction site S16 and air monitoring station AMS6. According to information provided by the Contractor, water spraying was provided for dusty materials to maintain the entire surface in a damp condition and haul roads were sprayed with water by water trucks regularly.

During collection of filter paper at AMS6 on 4 June 2018, weed was observed on the filter paper which was used for monitoring on 1 June 2018. Also, the weed in the vicinity of station AMS6 was found to be cleared by other parties. It is noted that the weed removal work in the vicinity of station AMS6 was not carried out under the Contract No. HY/2011/03. The weed clearing activities in the vicinity of AMS6 may be one of dust sources to cause the 24-hr TSP LL exceedance on 1 June 2018. An additional monitoring was carried out on 6 June 2018 and a routine monitoring was carried out on 7 June 2018. The 24-hr TSP result on 6 and 7 June 2018 were $32 \mu\text{g}/\text{m}^3$ which were below Action and Limit Level. It was also noted that no Action and Limit Level exceedances of 1-hr TSP were recorded at air monitoring station AMS6 - Dragonair Building during the period from 1 June 2018 to 20 June 2018.

Actions taken/ to be taken:

It was noted that the Contractor has implemented dust control measure throughout the construction phase. There is no direct evidence that the exceedance is related to the Contract. No immediate actions are considered necessary. However, the Contractor is reminded to continuously implement the dust mitigation measures as specified in Environmental Mitigation Implementation Schedule (EMIS), Environmental Management Plan, Method Statements, General and Particular Specifications of this Contract throughout the construction phase.

Reviewed by : Claudine Lee Title : ET Leader



Date : 6 July 2018

Copied to : Supervising Officer, IEC, EPD, Contractor, ENPO

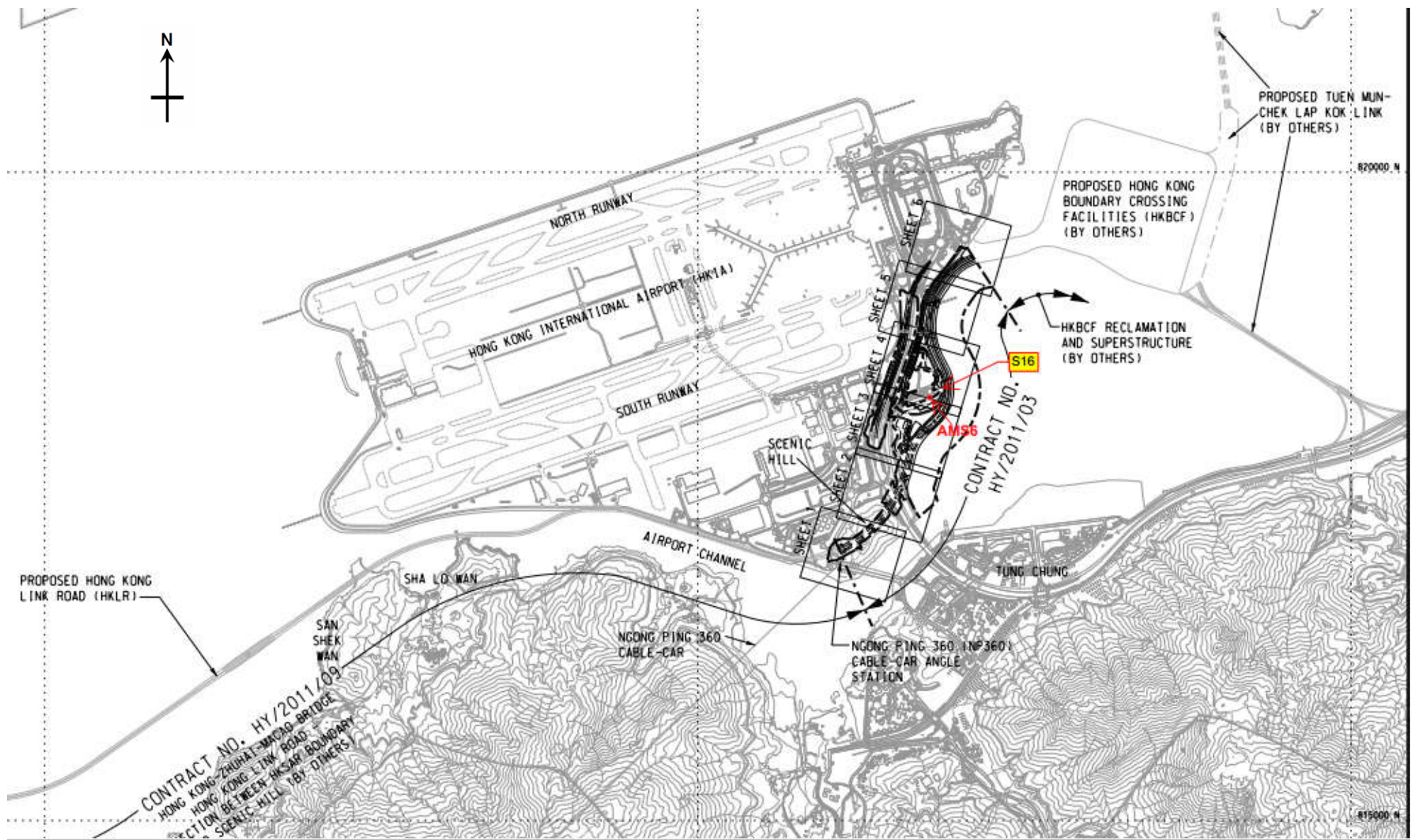


Figure 1 - Location of Construction Site S16 and Air Monitoring Station AMS6

**Contract No. HY/2011/03 -
 Hong Kong- Zhuhai- Macao Bridge
 Hong Kong Link Road Section between Scenic Hill and Hong Kong Boundary Crossing Facilities**
Notifications of Environmental Quality Limits Exceedances Notification No.: 279 ver0

Date of Notification: 6 July 2018

Works Inspected: Data collected from water sampling works on 29 June 2018 and the test report was issued on 6 July 2018.

Monitoring Location: Water Quality Monitoring Stations

Parameter: Dissolved Oxygen (DO)/ ~~Suspended Solids (SS)~~/ Turbidity (TURB)

Action & Limit Level (AL & LL) / Measured Level:

PARAM	STATION	DEPTH	AL (mg/L)	LL (mg/L)	MEASURED AT MID-EBB TIDE (mg/L)	MEASURED AT MID-FLOOD TIDE (mg/L)
DO	IS5	Bottom	4.7	3.6	4.6	4.9

Notes:
Bold Italic means AL exceedances.
Bold Italic with underline means LL exceedances.

Possible reasons for Action Level Non-compliance:

On 29 June 2018, an Action Level exceedance of dissolved oxygen was recorded at station IS5 during the mid-ebb tide. The exceedance has been investigated and is considered unlikely to be related to contract works due to the following reasons:

1. According to Contractor's information, there was no marine transportation near station IS5 during sampling period and no marine works were conducted near station IS5 which is located outside the site boundary of HKLR03 Contract. No abnormality or malpractice for the contract works was observed during the sampling exercise.
2. The range of dissolved oxygen for bottom level at station IS5 during the baseline monitoring is shown as below:

Station	Depth	Range of Dissolved Oxygen (mg/L) Mid-Ebb Tide		Range of Dissolved Oxygen (mg/L) Mid-Flood Tide	
IS5	Bottom	3.3	to 8.6	2.9	to 9.4

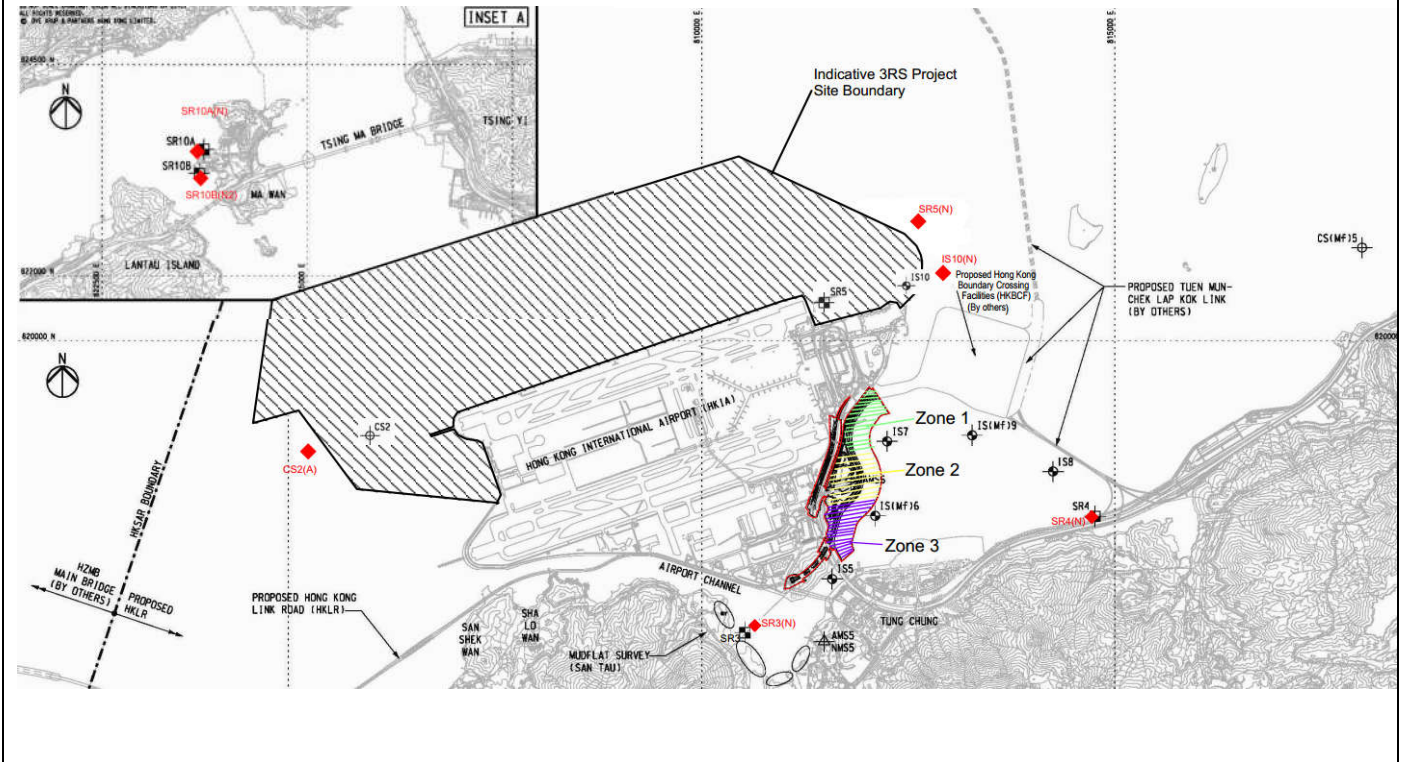
On 29 June 2018, the measured value of dissolved oxygen for bottom level at station IS5 during the mid-ebb tide was within the range of the baseline monitoring.

3. There were no specific activities recorded during the monitoring period that would cause any significant impact on the monitoring results. As such, the exceedance in DO level is considered to be attributed to other external factors rather than the contract works.

Actions taken/ to be taken:

As the DO level recorded beyond the water quality criteria was not related to contract works, no immediate actions are considered necessary. However, the Contractor is reminded to ensure the silt curtain is fully maintained throughout the construction works and construction works are under stringer supervision to prevent any water quality impacts to the seawater.

Location Plan:



Reviewed by : Claudine Lee

Title : ET Leader

Date : 9 July 2018

Copied to : Supervising Officer, IEC, EPD, Contractor, ENPO

Summary of Notifications of Summons and Prosecutions

Total No. of Notifications of Summons / Prosecutions Received	No. of Notifications of Summons / Prosecutions Received during Reporting Period	Status of Notifications of Summons / Prosecutions
0	0	N/A