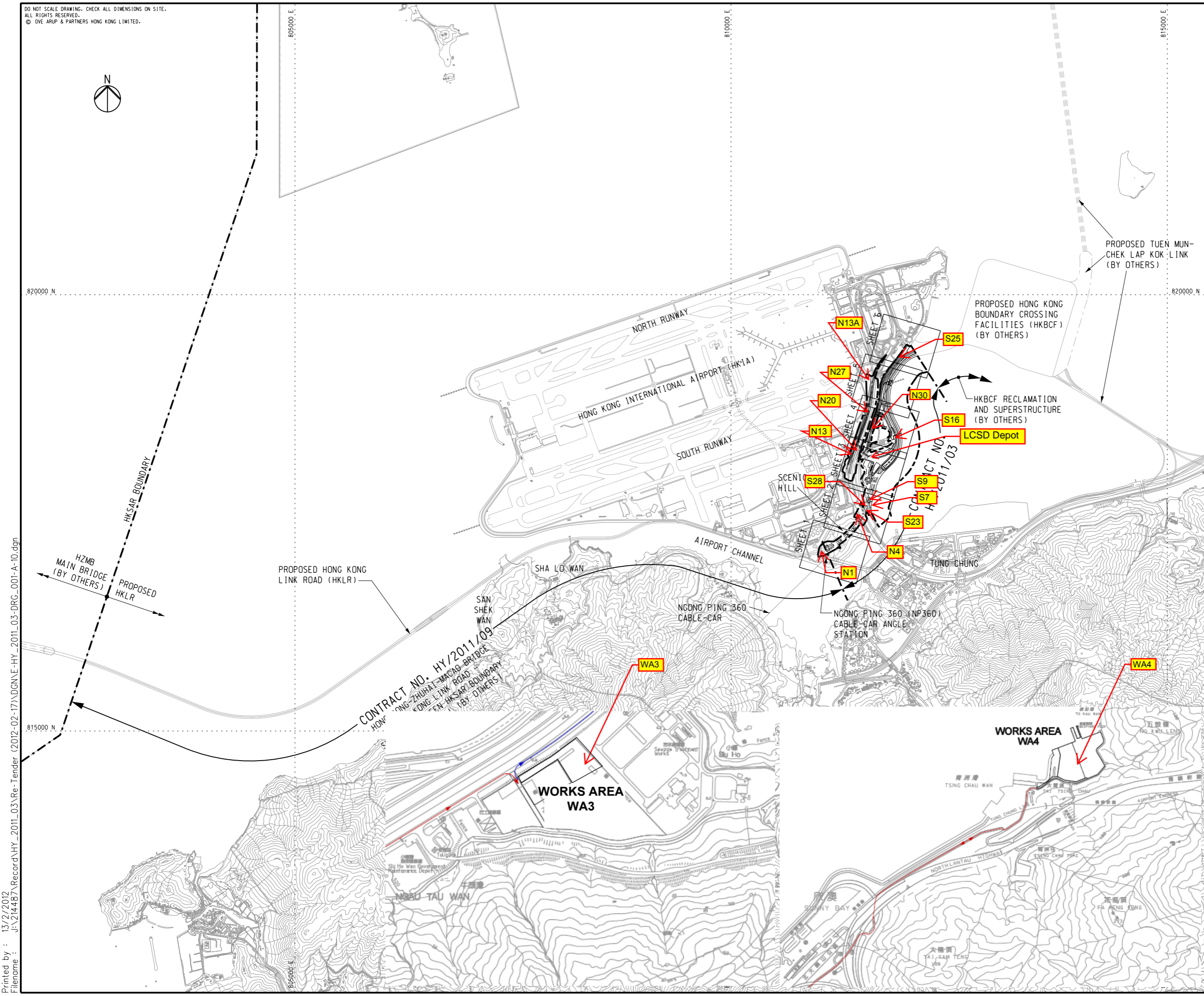


DO NOT SCALE DRAWING. CHECK ALL DIMENSIONS ON SITE.
ALL RIGHTS RESERVED.
© OVE ARUP & PARTNERS HONG KONG LIMITED.



NOTES

1. THIS DRAWING SHALL BE READ IN CONJUNCTION WITH DRG. NOS. 214487/2/T/002 - 007.

LEGEND

--- SITE BOUNDARY

A	TENDER ISSUE	IL	02/12
Rev	Description	By	Date

Consultant
ARUP 奧雅納工程顧問
Ove Arup & Partners Hong Kong Limited

Contract No. and Title:
Contract No. HY/2011/03
Hong Kong-Zhuhai-Macao Bridge
Hong Kong Link Road -
Section Between Scenic Hill and
Hong Kong Boundary Crossing Facilities

Drawing title
**GENERAL LAYOUT
KEY PLAN**

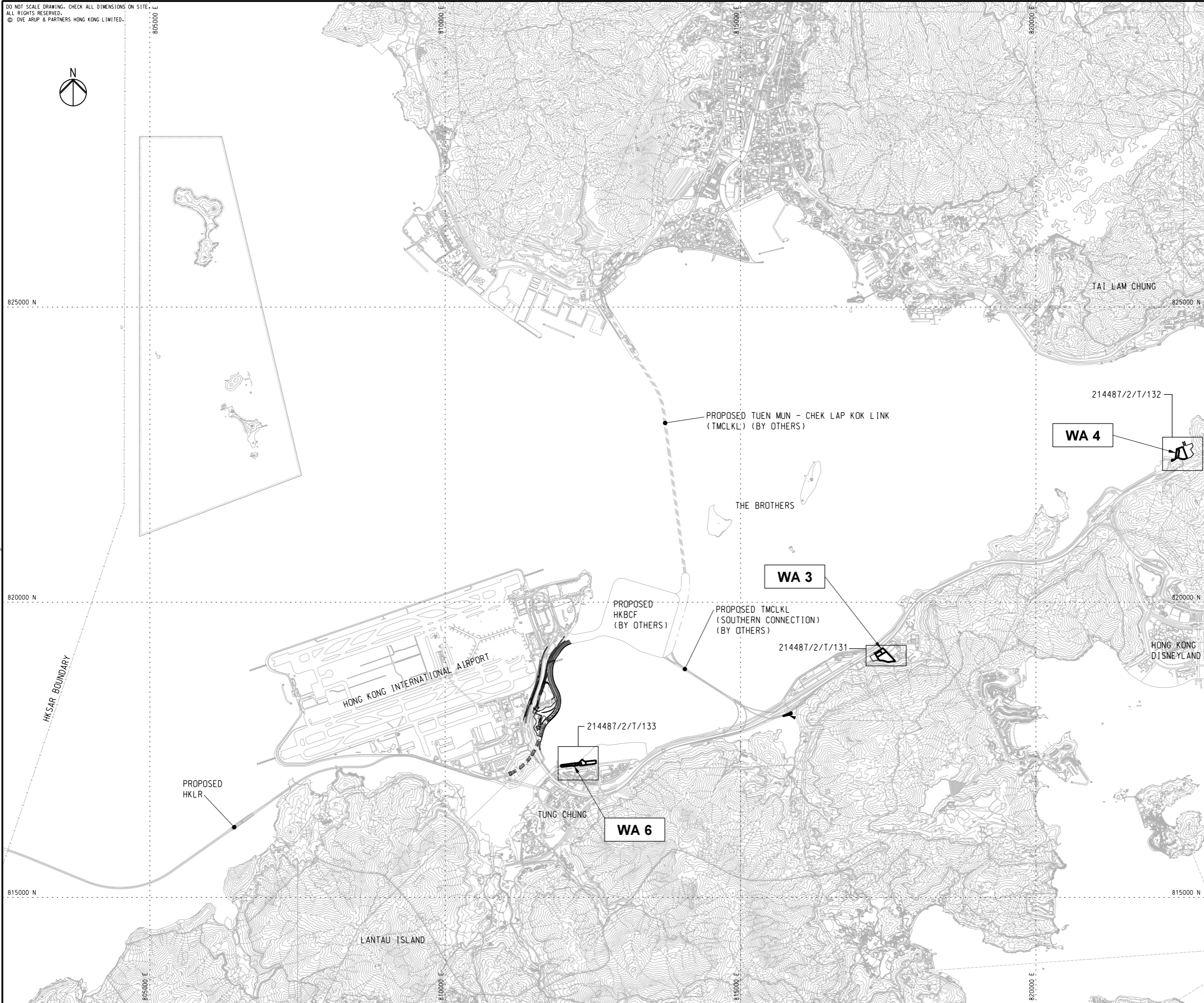
Drawing no.	214487/2/T/001	Rev.	A
Drawn	RY	Date	02/12
Checked	IL	Approved	SK
Scale	1:20000 @A1	Status	TENDER

COPYRIGHT RESERVED

路政署
HIGHWAYS DEPARTMENT
港珠澳大橋香港工程管理局
Hong Kong - Zhuhai - Macao Bridge
Hong Kong Project Management Office

Printed by : 13/2/2012
Filename : J:\214487\Record\HY_2011_03\Re-Tender (2012-02-17)\DGN\E-HY_2011_03-DRG_001-A-10.dgn

DO NOT SCALE DRAWING. CHECK ALL DIMENSIONS ON SITE.
 ALL RIGHTS RESERVED.
 © OVE ARUP & PARTNERS HONG KONG LIMITED.



NOTES

1. THIS DRAWING SHALL BE READ IN CONJUNCTION WITH DRG. NOS. 214487/2/T/131 - 133.

A	TENDER ISSUE	IL	02/12
Rev	Description	By	Date

Consultant
ARUP 奧雅納工程顧問
 Ove Arup & Partners Hong Kong Limited

Contract No. and Title:
 Contract No. HY/2011/03
Hong Kong-Zhuhai-Macao Bridge
Hong Kong Link Road -
Section Between Scenic Hill and
Hong Kong Boundary Crossing Facilities

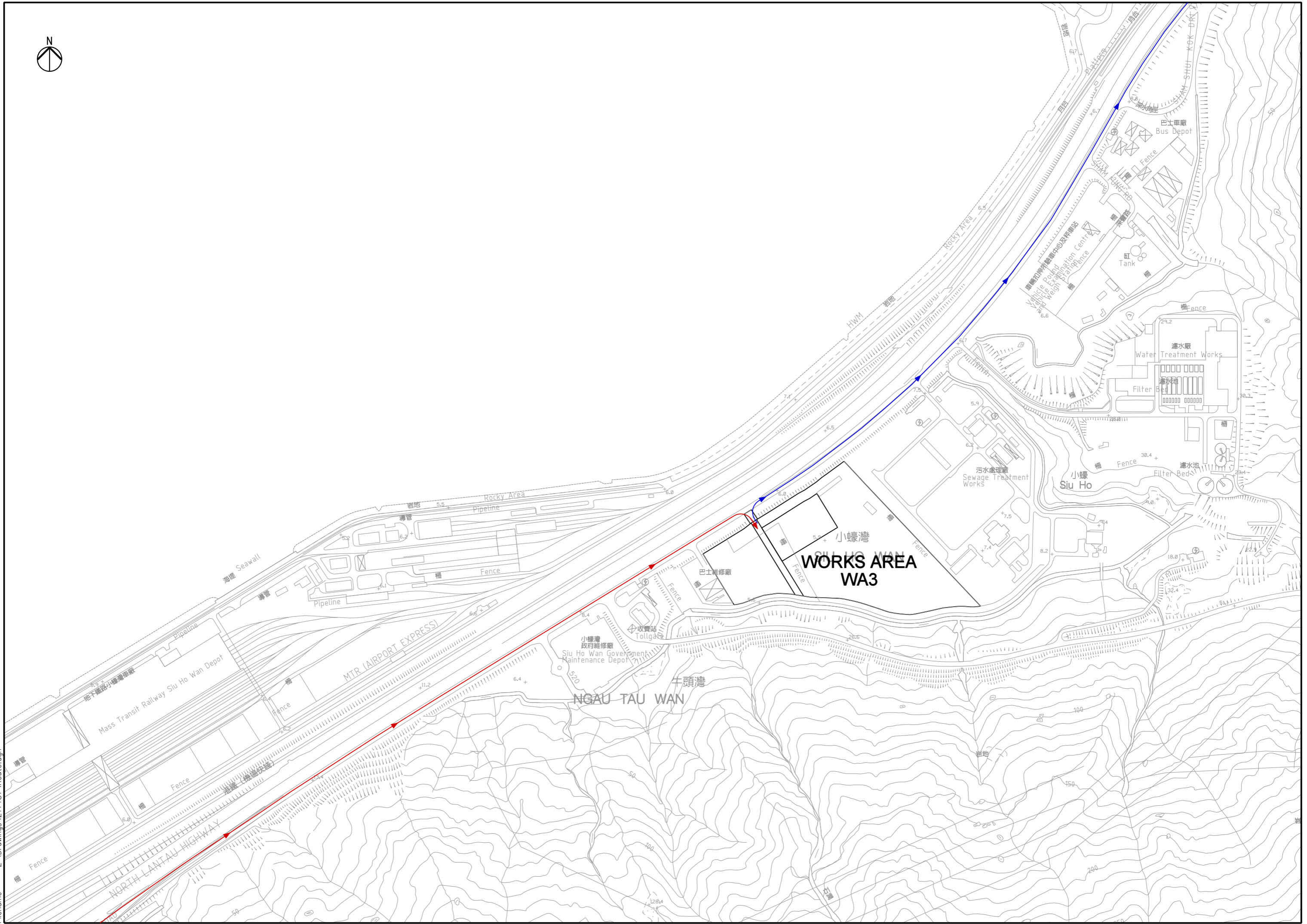
Drawing title
WORKS AREAS
KEY PLAN

Drawing no.		214487/2/T/130		Rev.	A
Drawn	Date	Checked	Approved		
RY	02/12	IL	SK		
Scale	1:30000 @A1		Status	TENDER	

COPYRIGHT RESERVED

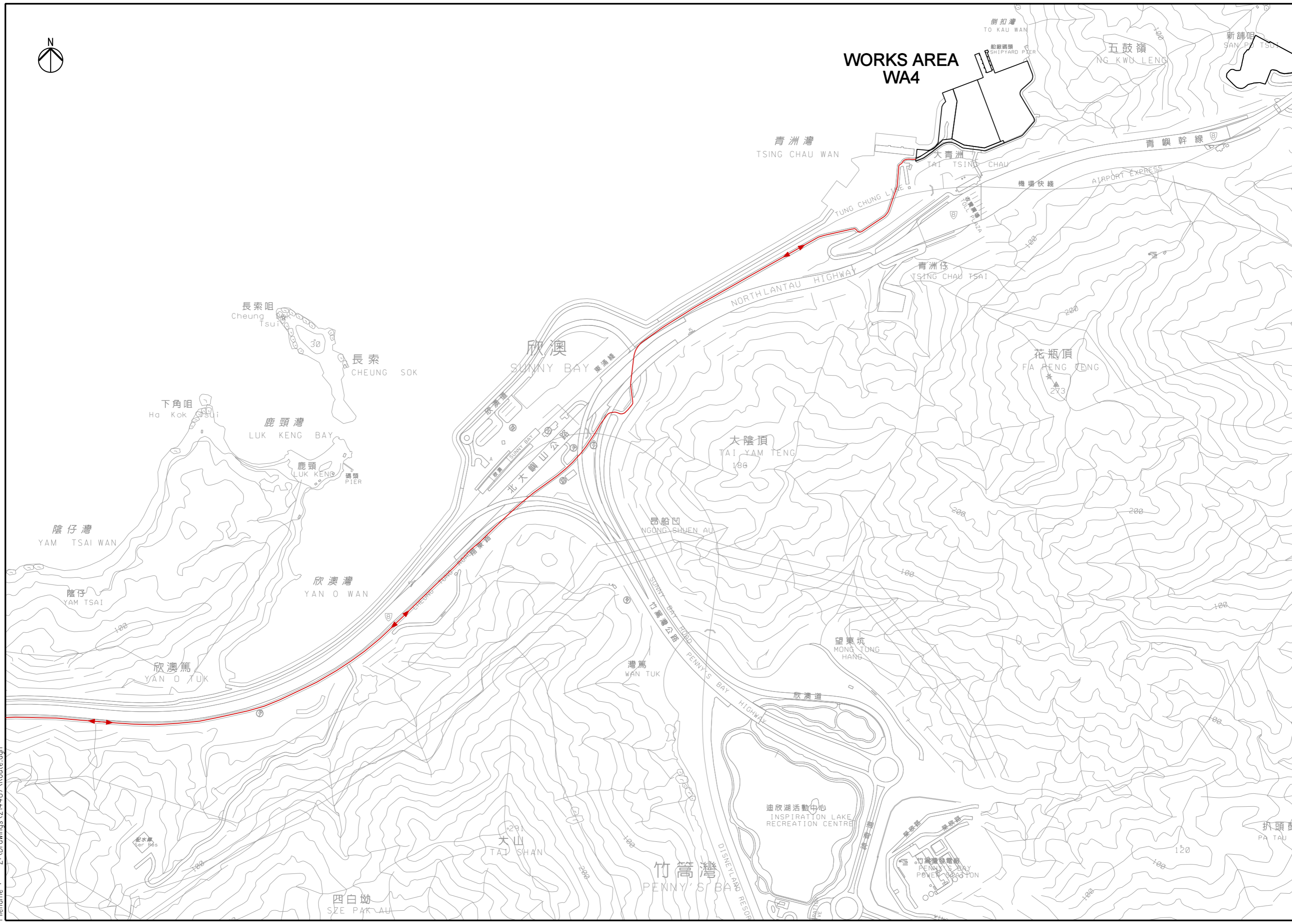


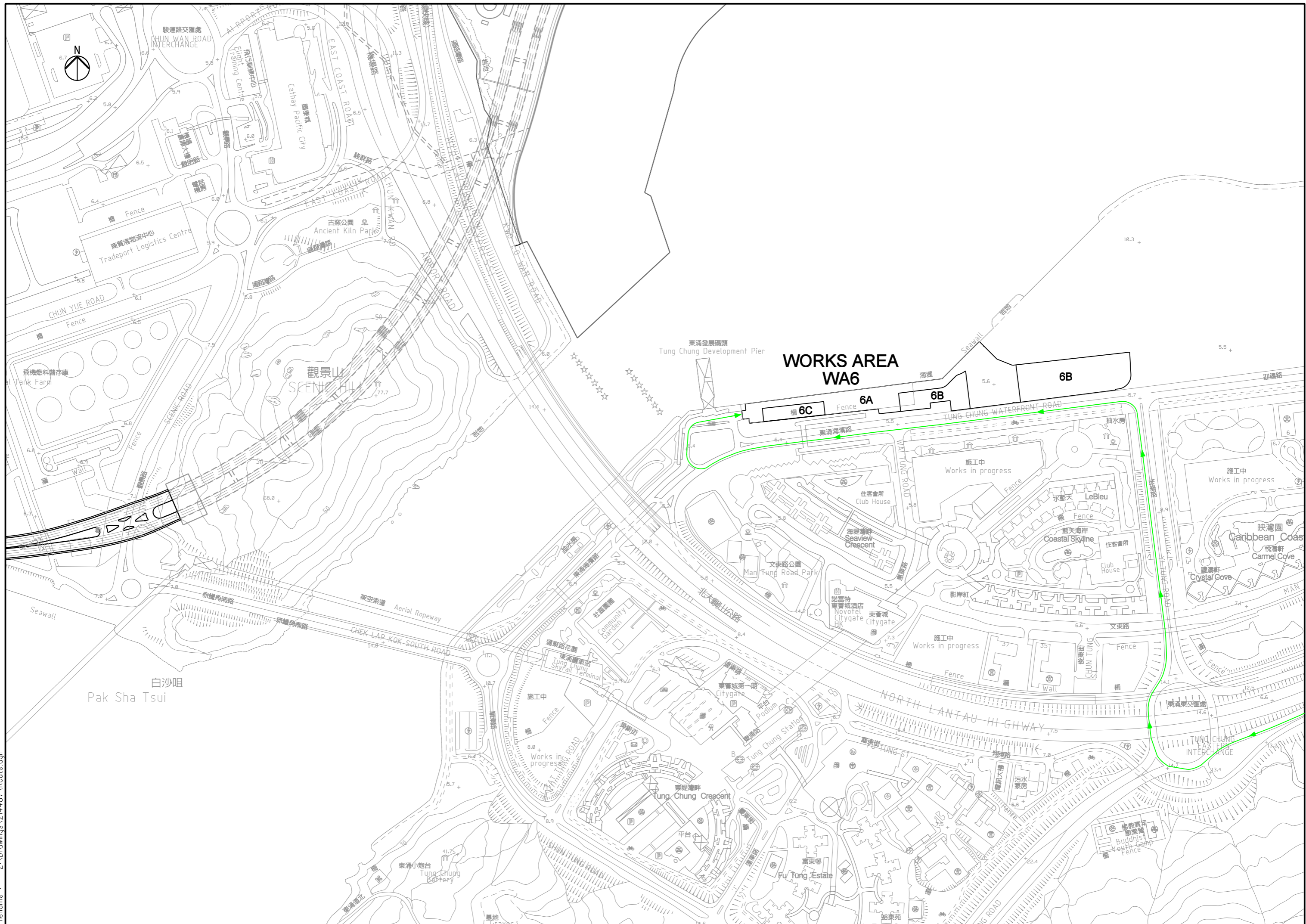
Printed by : 13/2/2012
 Filename : J:\214487\Record\HY_2011_03\Re-Tender (2012-02-17)\DGN\HY_2011_03-DRG_130-A-10.dgn





WORKS AREA WA4





WORKS AREA WA6

6B

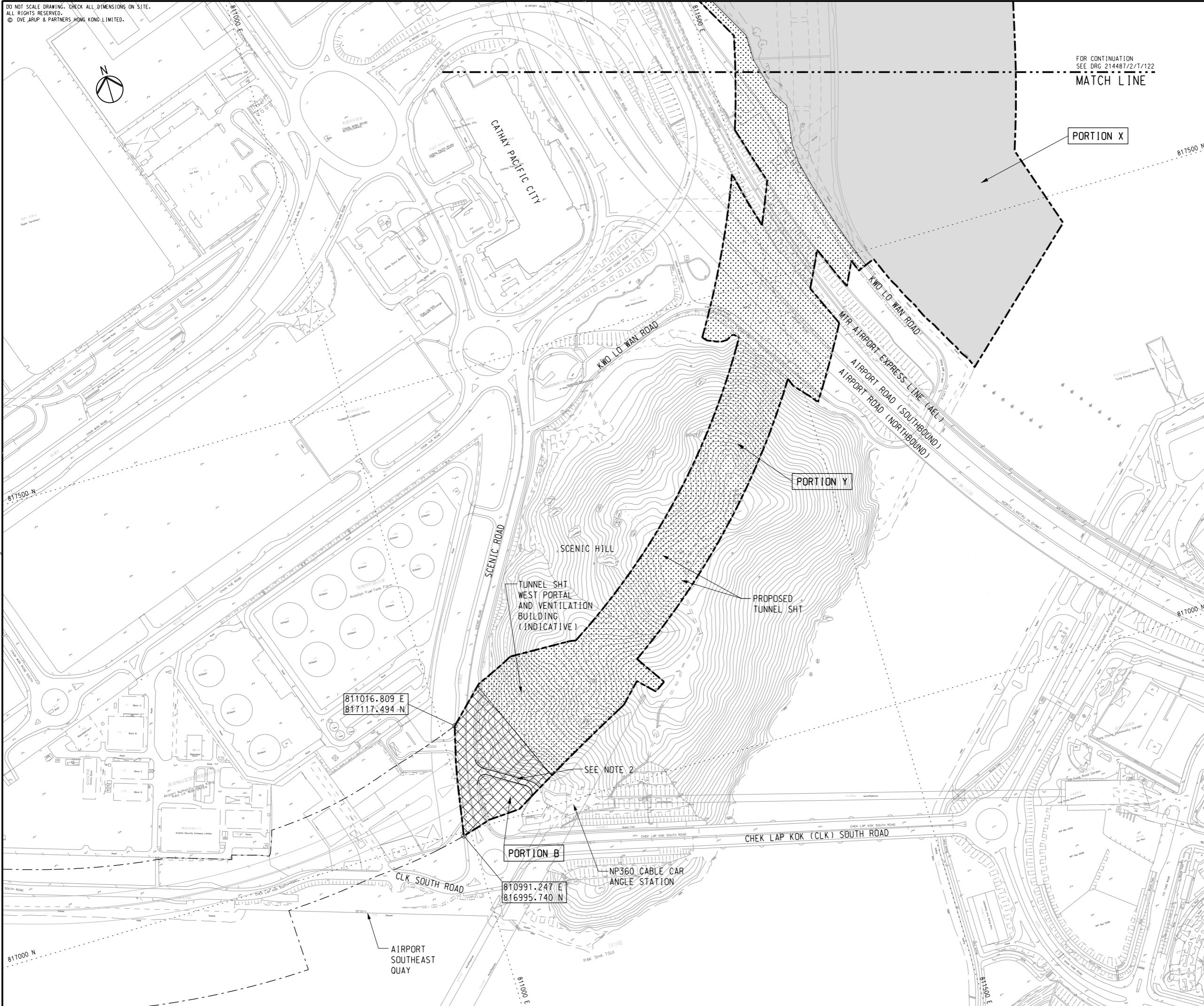
6C

6A

6B

白沙咀
Pak Sha Tsui

DO NOT SCALE DRAWING. CHECK ALL DIMENSIONS ON SITE.
ALL RIGHTS RESERVED.
© OVE ARUP & PARTNERS HONG KONG LIMITED.



NOTES

- FOR DETAILED DESCRIPTION OF PORTION OF SITE, REFER TO ER PART 2 GENERAL SITE DATA.
- ACCESS ROAD TO NP360 CABLE CAR ANGLE STATION SHALL BE MAINTAINED AT ALL TIMES.

LEGEND

- SITE BOUNDARY
- PORTION X
- PORTION Y
- PORTION B
- PORTION C
- PORTION D1

Printed by : 13/2/2012
 Filename : J:\214487\Record\HY_2011_03\Re-Tender (2012-02-17)\DGN\E-HY_2011_03-DRG-121-A-10.dgn

A	TENDER ISSUE	IL	02/12
Rev	Description	By	Date

Consultant
ARUP 奧雅納工程顧問
 Ove Arup & Partners Hong Kong Limited

Contract No. and Title:
 Contract No. HY/2011/03
 Hong Kong-Zhuhai-Macao Bridge
 Hong Kong Link Road -
 Section Between Scenic Hill and
 Hong Kong Boundary Crossing Facilities

Drawing title
**PORTION OF SITE
 (SHEET 1 OF 3)**

Drawing no. 214487/2/T/121		Rev. A	
Drawn RY	Date 02/12	Checked IL	Approved SK
Scale 1:2000 @A1	Status	TENDER	

COPYRIGHT RESERVED

路政署
HIGHWAYS DEPARTMENT
 港珠澳大橋香港工程管理局
 Hong Kong - Zhuhai - Macao Bridge
 Hong Kong Project Management Office

DO NOT SCALE DRAWING. CHECK ALL DIMENSIONS ON SITE.
ALL RIGHTS RESERVED.
© OVE ARUP & PARTNERS HONG KONG LIMITED.



HONG KONG INTERNATIONAL AIRPORT
SOUTH RUNWAY

PORTION Y

CIVIL AVIATION DEPARTMENT
(CAD) NEW HEADQUARTERS

EXISTING DRAGONAIR HEADQUARTERS
EXISTING CNAC TOWER

FOR CONTINUATION
SEE DRG 214487/2/T/123
MATCH LINE

PORTION X

MATCH LINE
FOR CONTINUATION
SEE DRG 214487/2/T/121

NOTES

1. FOR GENERAL NOTES AND LEGEND, REFER TO DRG. NO. 214487/2/T/121.

Printed by : 13/2/2012
Filename : J:\214487\Record\HY_2011_03\Re-Tender (2012-02-17)\DGN\HY_2011_03-DRG_122-A-10.dgn

A	TENDER ISSUE	IL	02/12
Rev	Description	By	Date

Consultant
ARUP 奧雅納工程顧問
Ove Arup & Partners Hong Kong Limited

Contract No. and Title:
Contract No. HY/2011/03
Hong Kong-Zhuhai-Macao Bridge
Hong Kong Link Road -
Section Between Scenic Hill and
Hong Kong Boundary Crossing Facilities

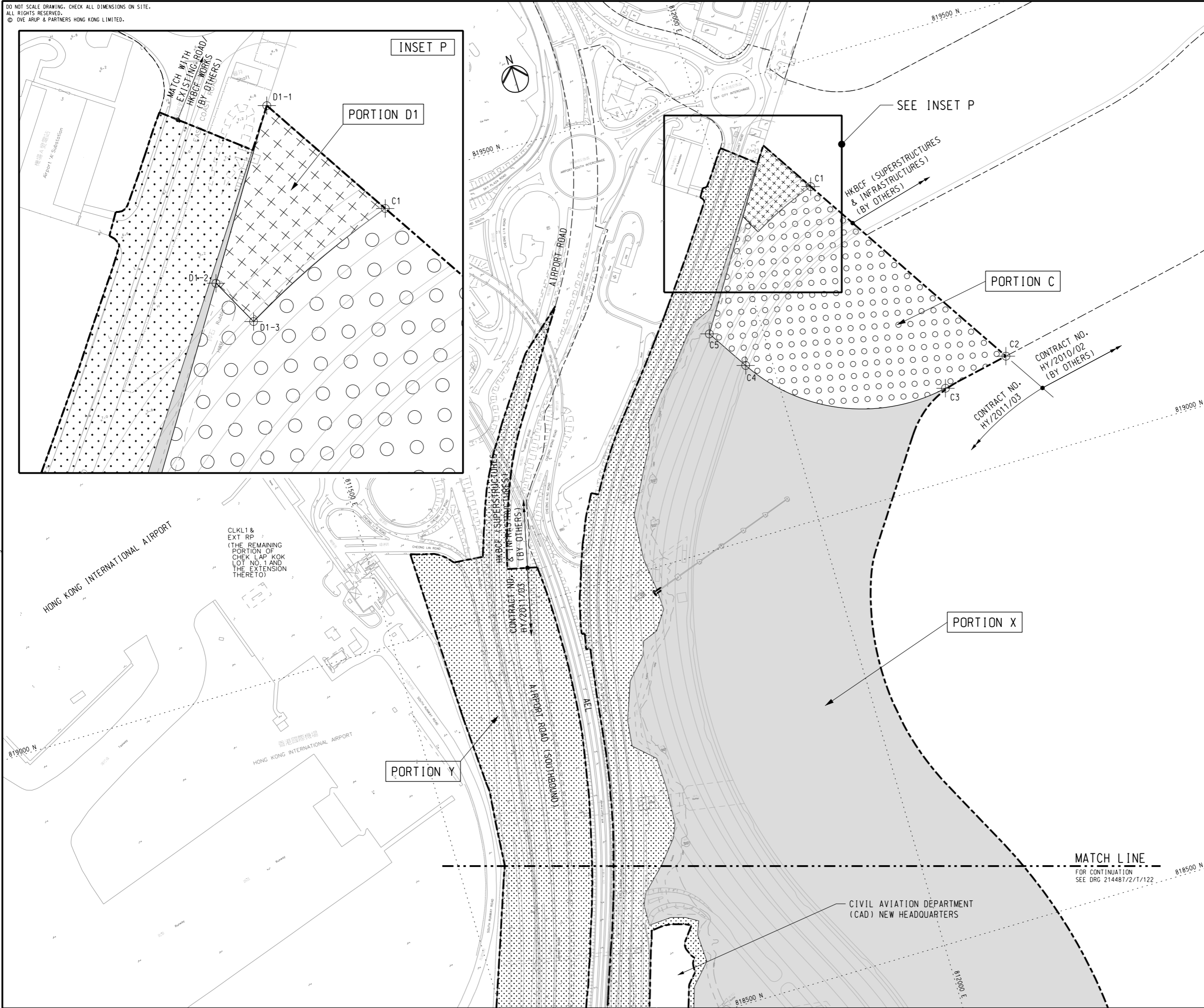
Drawing title
**PORTION OF SITE
(SHEET 2 OF 3)**

Drawing no. 214487/2/T/122		Rev. A	
Drawn RY	Date 02/12	Checked IL	Approved SK
Scale 1:2000 @A1	Status	TENDER	

COPYRIGHT RESERVED

路政署
HIGHWAYS DEPARTMENT
港珠澳大橋香港工程管理處
Hong Kong - Zhuhai - Macao Bridge
Hong Kong Project Management Office

DO NOT SCALE DRAWING. CHECK ALL DIMENSIONS ON SITE.
 ALL RIGHTS RESERVED.
 © OVE ARUP & PARTNERS HONG KONG LIMITED.



NOTES
 1. FOR GENERAL NOTES AND LEGEND, REFER TO DRG. NO. 214487/2/T/121.

SETTING OUT CO-ORDINATES OF SITE PORTION C

POINT	CO-ORDINATES	
	EASTING	NORTHING
C1	812097.481	819361.966
C2	812254.199	819116.562
C3	812178.695	819101.208
C4	811970.282	819189.551
C5	811941.125	819235.206

SETTING OUT CO-ORDINATES OF SITE PORTION D1

POINT	CO-ORDINATES	
	EASTING	NORTHING
D1-1	812059.460	819421.497
D1-2	812014.853	819351.273
D1-3	812026.200	819329.938

Rev	Description	By	Date
A	TENDER ISSUE	IL	02/12

Consultant
ARUP 奧雅納工程顧問
 Ove Arup & Partners Hong Kong Limited

Contract No. and Title:
 Contract No. HY/2011/03
 Hong Kong-Zhuhai-Macao Bridge
 Hong Kong Link Road -
 Section Between Scenic Hill and
 Hong Kong Boundary Crossing Facilities

Drawing title
 PORTION OF SITE
 (SHEET 3 OF 3)

Drawing no. 214487/2/T/123		Rev. A	
Drawn RY	Date 02/12	Checked IL	Approved SK
Scale 1:2000 @A1	Status TENDER		

COPYRIGHT RESERVED

路政署
HIGHWAYS DEPARTMENT
 港珠澳大橋香港工程處
 Hong Kong - Zhuhai - Macao Bridge
 Hong Kong Project Management Office

Printed by : 13/2/2012
 Filename : J:\214487\Record\HY_2011_03\Re-Tender (2012-02-17)\DGN\HY_2011_03-DRG-123-A-10.dgn