

Date of Notification: 5 September 2019

Works Inspected: Data collected from water sampling works on 30 August 2019 and the results were issued on 4 September 2019

Monitoring Location: Water Quality Monitoring Stations

Parameter: Dissolved Oxygen (DO)/ ~~Suspended Solids (SS)~~/ Turbidity (TURB)

Action & Limit Level (AL & LL) / Measured Level:

PARAM	STATION	DEPTH	AL (mg/L)	LL (mg/L)	MEASURED AT MID-EBB TIDE (mg/L)	MEASURED AT MID-FLOOD TIDE (mg/L)
DO	IS10(N)	Surface and Middle	5.0	4.2	4.8	4.6
DO	SR5(N)	Surface and Middle	5.0	4.2	4.9	4.6
DO	SR10A(N)	Surface and Middle	5.0	5.0	<u>4.8</u>	<u>4.4</u>
DO	SR10B(N2)	Surface and Middle	5.0	5.0	<u>4.9</u>	<u>4.5</u>
DO	IS10(N)	Bottom	4.7	3.6	4.7	4.6
DO	SR5(N)	Bottom	4.7	3.6	4.9	4.5
DO	SR10A(N)	Bottom	4.7	3.6	4.8	4.2
DO	SR10B(N2)	Bottom	4.7	3.6	4.8	4.3

Notes:

- 1) ***Bold Italic*** means AL exceedances.
- 2) ***Bold Italic with underline*** means LL exceedances.

Possible reasons for Action Level / Limit Level Non-compliance:

On 30 August 2019, 2 Action Level exceedances of dissolved oxygen at stations IS10(N), SR5(N) and 2 Limit Level exceedances of dissolved oxygen were recorded at SR10A(N), SR10B(N2) at surface and middle level during mid-ebb tide. 2 Action Level exceedances of dissolved oxygen at stations IS10(N), SR5(N) and 2 Limit Level exceedances of dissolved oxygen were recorded at SR10A(N), SR10B(N2) at surface and middle level during mid-flood tide. 4 Action Level exceedances of dissolved oxygen were recorded at IS10(N), SR5(N), SR10A(N) and SR10B(N2) at bottom level during mid-flood tide. The exceedances have been investigated and are considered unlikely to be related to contract works due to the following reasons:

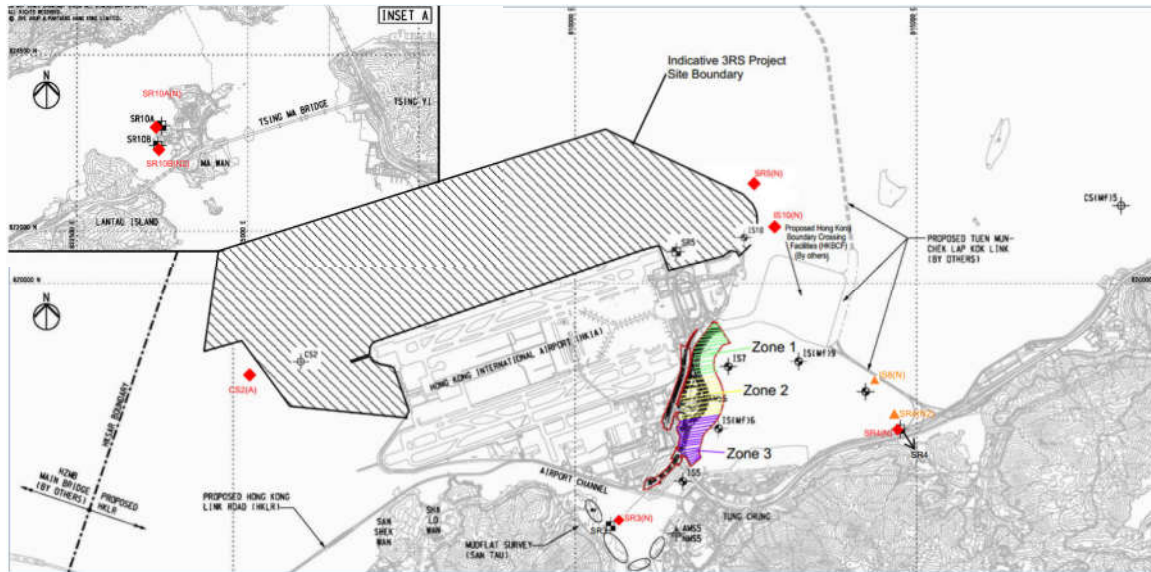
1. Land-based work including construction of maintenance access at Zone 3 were carried out on 30 August 2019. No wastewater was discharged from work areas of this Contract to the open water on 30 August 2019. It is also noted that exceedances were not recorded at stations IS5, IS(Mf)6 and IS7 which are located close to the site boundary of this Contract. As confirmed by the Contractor of this Contract, there were no marine based works and no marine transportation in the vicinity of stations IS10(N), SR5(N), SR10A(N) and SR10B(N2) on 30 August 2019 which are located far away the site boundary of this Contract (over 1.5 km).

2. Water appearance was observed clear at stations IS10(N), SR5(N), SR10A(N) and SR10B(N2) during sampling exercise. No silt plume and no abnormality or malpractice for the contract works were observed in the vicinity of the stations during the sampling exercise.
3. There were no specific activities recorded during the monitoring period that would cause any significant impacts on the monitoring results. As such, the exceedances in DO level are considered to be attributed to other external factors such as sea condition, rather than the contract works.

Actions taken/ to be taken:

As the DO level recorded beyond the water quality criteria was not related to contract works, no immediate actions are considered necessary. However, the Contractor is reminded to ensure the silt curtain is fully maintained throughout the construction works and construction works are under stringer supervision to prevent any water quality impacts to the seawater.

Location Plan:



Reviewed by : Claudine Lee

Title : ET Leader

Date : 10 September 2019

Copied to : Supervising Officer, IEC, EPD, Contractor, ENPO

Summary of Notifications of Summons and Prosecutions

Total No. of Notifications of Summons / Prosecutions Received	No. of Notifications of Summons / Prosecutions Received during Reporting Period	Status of Notifications of Summons / Prosecutions
0	0	N/A