

Figure 1. Transect Line Layout in Northwest and Northeast Lantau Survey Areas

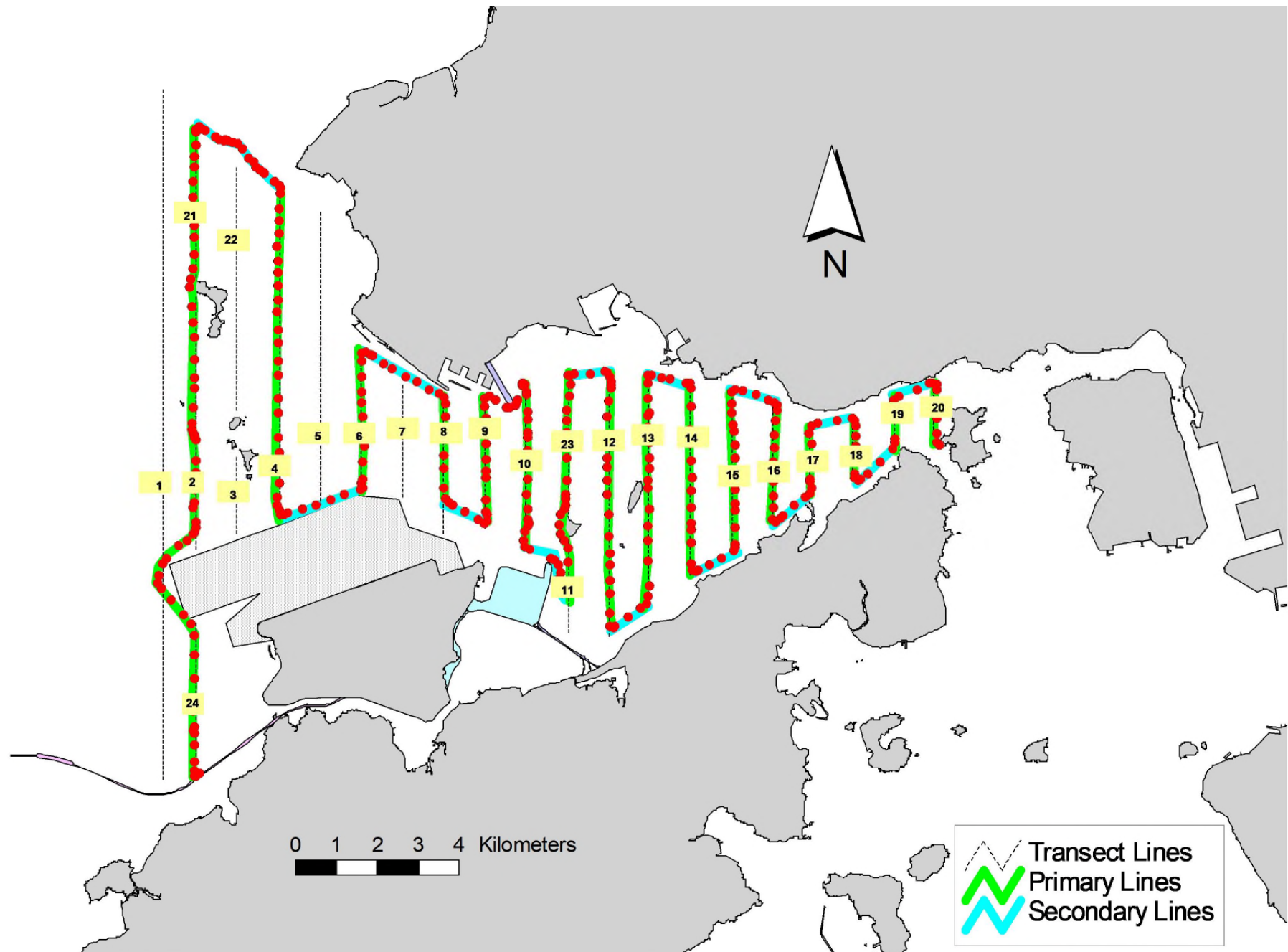


Figure 2. Survey Route on September 4th, 2019

Remark: There were some construction boats working close to southern end of transect line no. 11 during dolphin monitoring on 4 September 2019. Due to safety reason, the southern end of transect line no. 11 cannot be travelled at all on 4 September 2019.

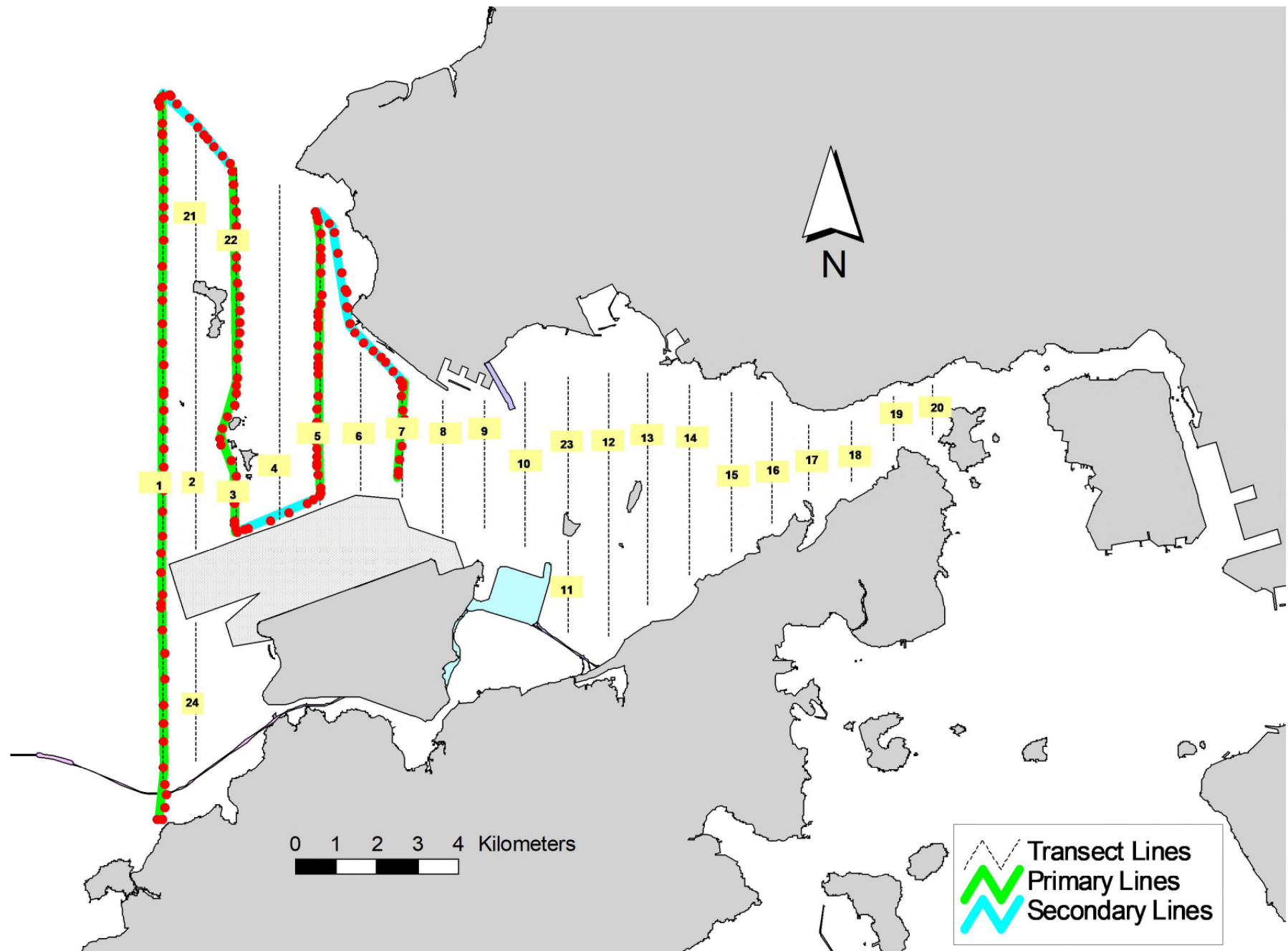


Figure 3. Survey Route on September 11th, 2019

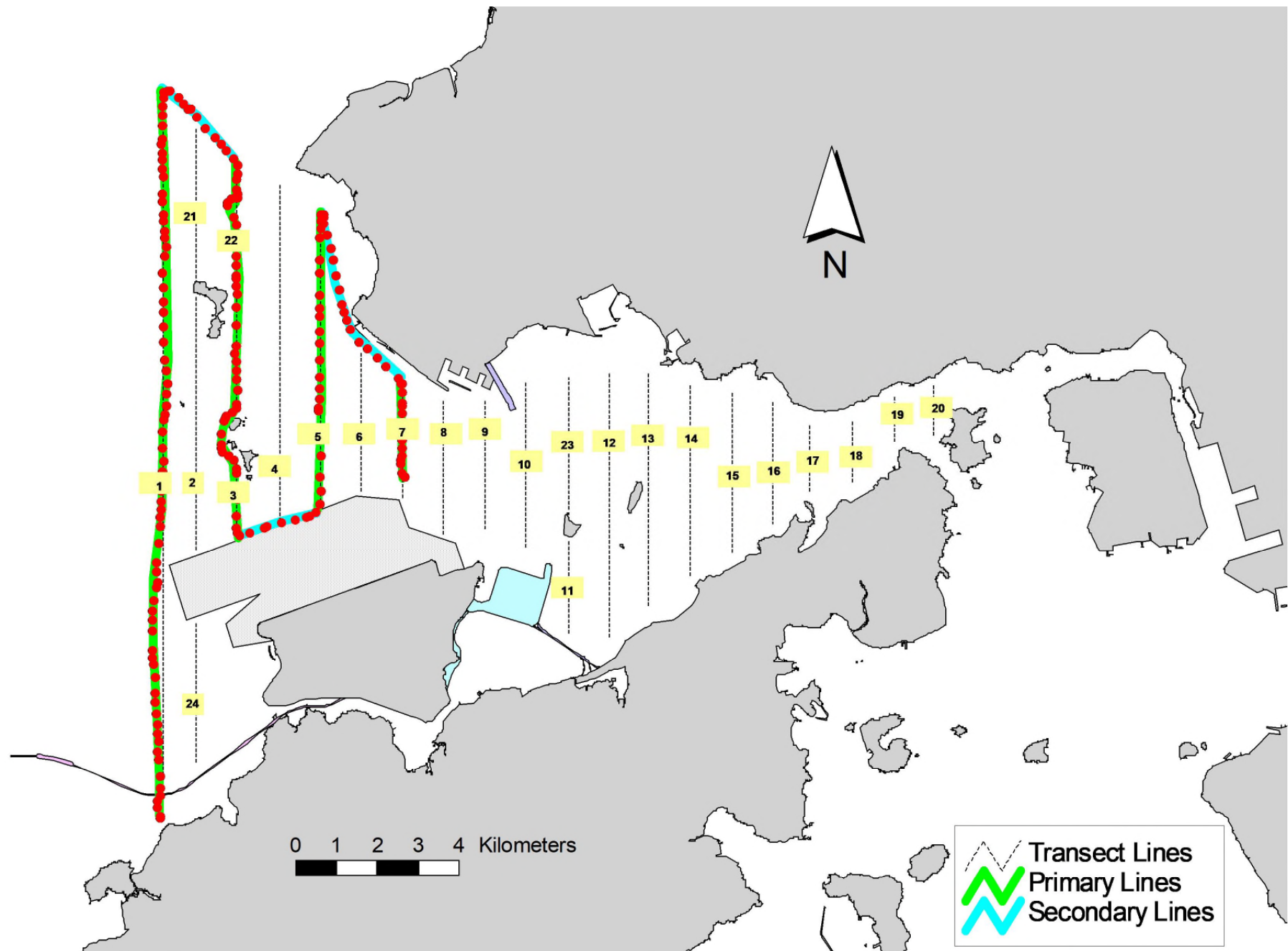


Figure 4. Survey Route on September 17th, 2019

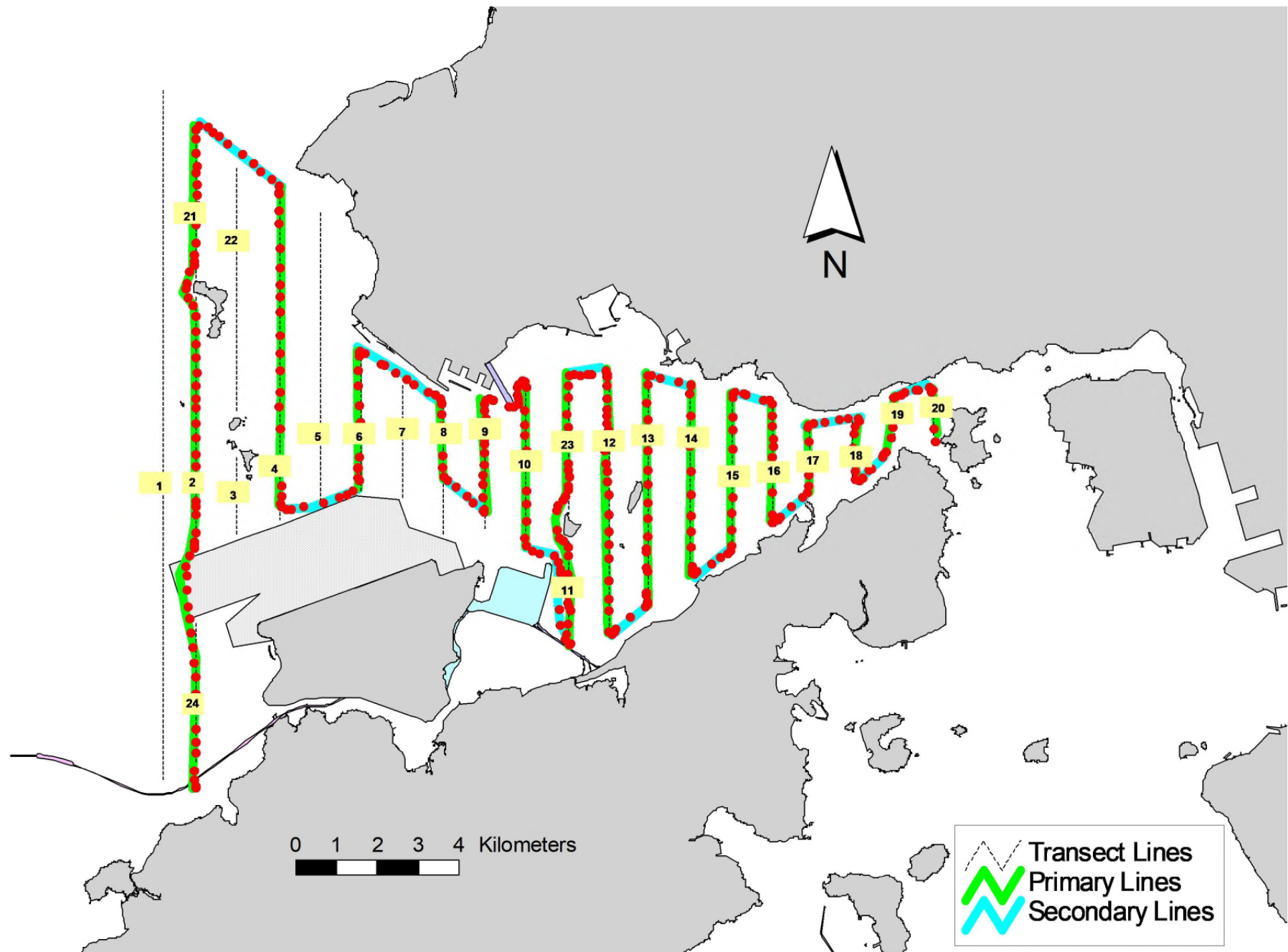


Figure 5. Survey Route on September 23rd, 2019

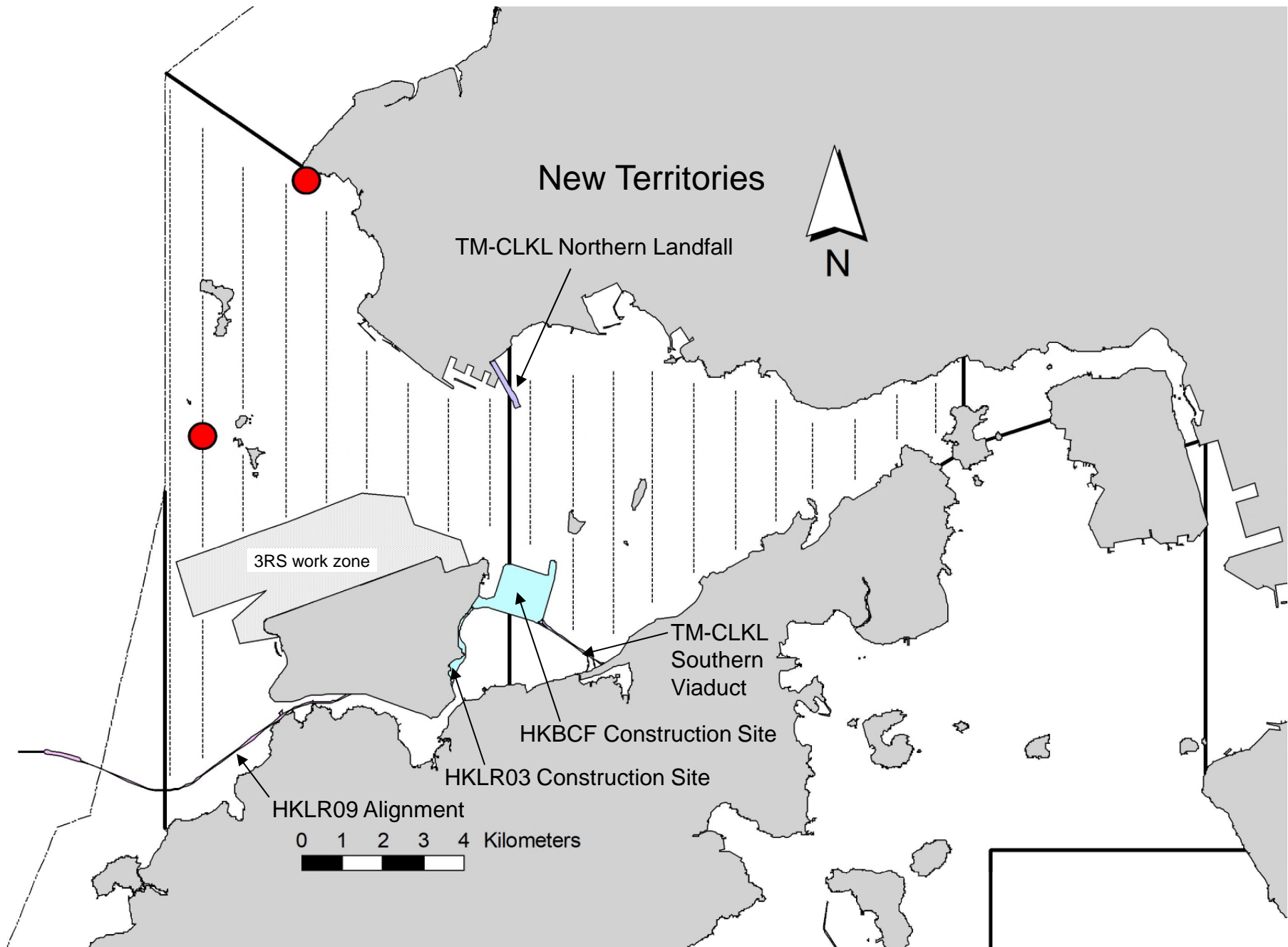


Figure 6. Distribution of Chinese White Dolphin Sightings during September 2019 HKLR03 Monitoring Surveys

Annex I. HKLR03 Survey Effort Database (September 2019)

(Abbreviations: BEAU = Beaufort Sea State; P = Primary Line Effort; S = Secondary Line Effort)

DATE	AREA	BEAU	EFFORT	SEASON	VESSEL	TYPE	P/S
4-Sep-19	NW LANTAU	2	21.38	AUTUMN	STANDARD36826	HKLR	P
4-Sep-19	NW LANTAU	3	6.40	AUTUMN	STANDARD36826	HKLR	P
4-Sep-19	NW LANTAU	2	9.12	AUTUMN	STANDARD36826	HKLR	S
4-Sep-19	NW LANTAU	3	2.52	AUTUMN	STANDARD36826	HKLR	S
4-Sep-19	NE LANTAU	2	16.70	AUTUMN	STANDARD36826	HKLR	P
4-Sep-19	NE LANTAU	3	18.83	AUTUMN	STANDARD36826	HKLR	P
4-Sep-19	NE LANTAU	2	7.75	AUTUMN	STANDARD36826	HKLR	S
4-Sep-19	NE LANTAU	3	5.12	AUTUMN	STANDARD36826	HKLR	S
11-Sep-19	NW LANTAU	1	1.60	AUTUMN	STANDARD36826	HKLR	P
11-Sep-19	NW LANTAU	2	29.50	AUTUMN	STANDARD36826	HKLR	P
11-Sep-19	NW LANTAU	3	2.10	AUTUMN	STANDARD36826	HKLR	P
11-Sep-19	NW LANTAU	1	1.40	AUTUMN	STANDARD36826	HKLR	S
11-Sep-19	NW LANTAU	2	8.99	AUTUMN	STANDARD36826	HKLR	S
17-Sep-19	NW LANTAU	2	8.96	AUTUMN	STANDARD36826	HKLR	P
17-Sep-19	NW LANTAU	3	22.90	AUTUMN	STANDARD36826	HKLR	P
17-Sep-19	NW LANTAU	4	1.90	AUTUMN	STANDARD36826	HKLR	P
17-Sep-19	NW LANTAU	2	4.54	AUTUMN	STANDARD36826	HKLR	S
17-Sep-19	NW LANTAU	3	4.90	AUTUMN	STANDARD36826	HKLR	S
17-Sep-19	NW LANTAU	4	1.20	AUTUMN	STANDARD36826	HKLR	S
23-Sep-19	NW LANTAU	2	19.22	AUTUMN	STANDARD36826	HKLR	P
23-Sep-19	NW LANTAU	3	7.79	AUTUMN	STANDARD36826	HKLR	P
23-Sep-19	NW LANTAU	2	9.84	AUTUMN	STANDARD36826	HKLR	S
23-Sep-19	NW LANTAU	3	4.25	AUTUMN	STANDARD36826	HKLR	S
23-Sep-19	NE LANTAU	1	11.30	AUTUMN	STANDARD36826	HKLR	P
23-Sep-19	NE LANTAU	2	25.35	AUTUMN	STANDARD36826	HKLR	P
23-Sep-19	NE LANTAU	1	3.61	AUTUMN	STANDARD36826	HKLR	S
23-Sep-19	NE LANTAU	2	10.74	AUTUMN	STANDARD36826	HKLR	S

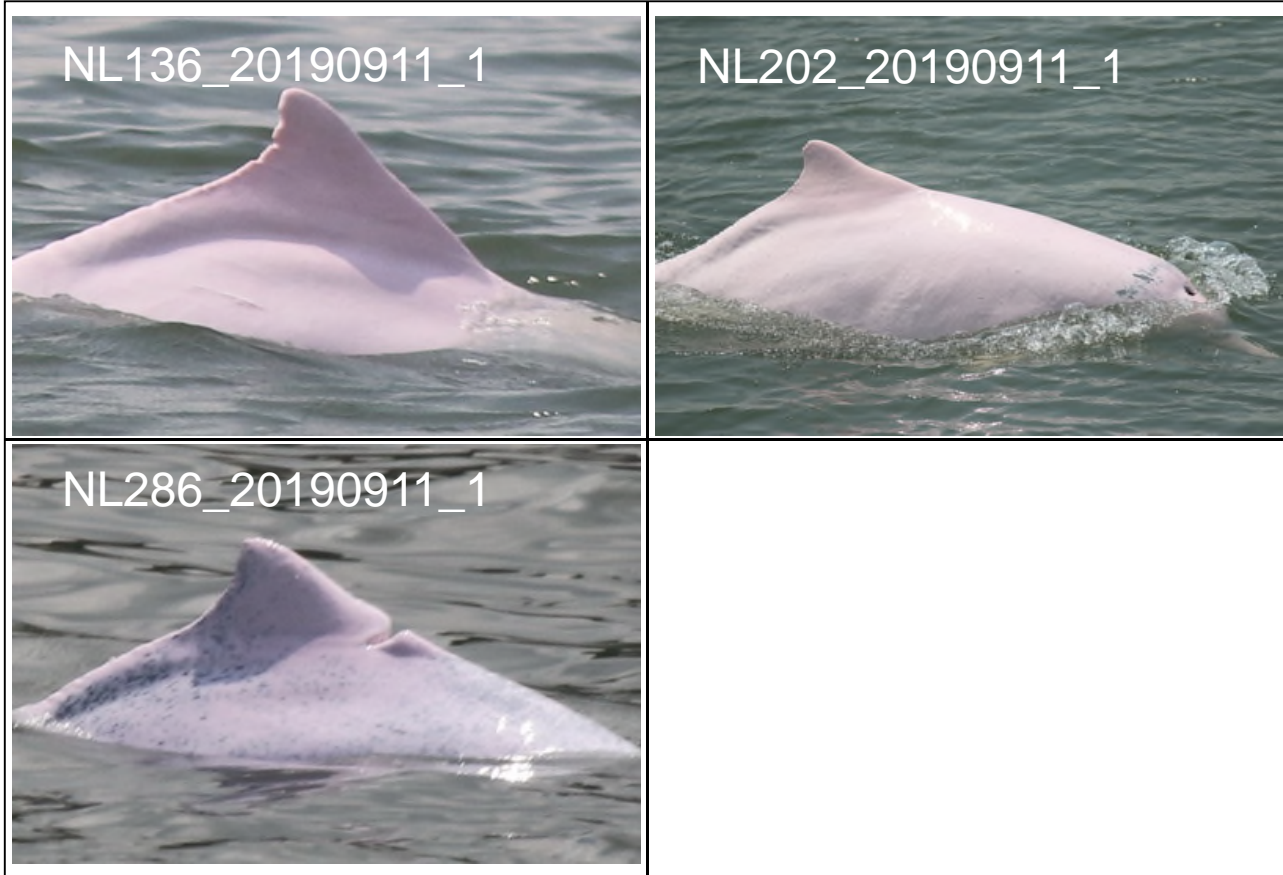
Annex II. HKLR03 Chinese White Dolphin Sighting Database (September 2019)

(Abberviations: STG# = Sighting Number; HRD SZ = Dolphin Herd Size; BEAU = Beaufort Sea State; PSD = Perpendicular Distance; BOAT ASSOC. = Fishing Boat Association; P/S: Sighting Made on Primary/Secondary Lines)

DATE	STG #	TIME	HRD SZ	AREA	BEAU	PSD	EFFORT	TYPE	NORTHING	EASTING	SEASON	BOAT ASSOC.	P/S
4-Sep-19	1	1046	2	NW LANTAU	2	311	ON	HKLR	823375	805440	AUTUMN	NONE	P
11-Sep-19	1	1058	3	NW LANTAU	2	430	ON	HKLR	829316	807975	AUTUMN	NONE	S

Annex III. Individual dolphins identified during HKLR03 monitoring surveys in (September 2019)

ID#	DATE	STG#	AREA
NL136	11/09/19	1	NW LANTAU
NL202	11/09/19	1	NW LANTAU
NL286	11/09/19	1	NW LANTAU



Annex IV. Photographs of Identified Individual Dolphins in September 2019 (HKLR03)