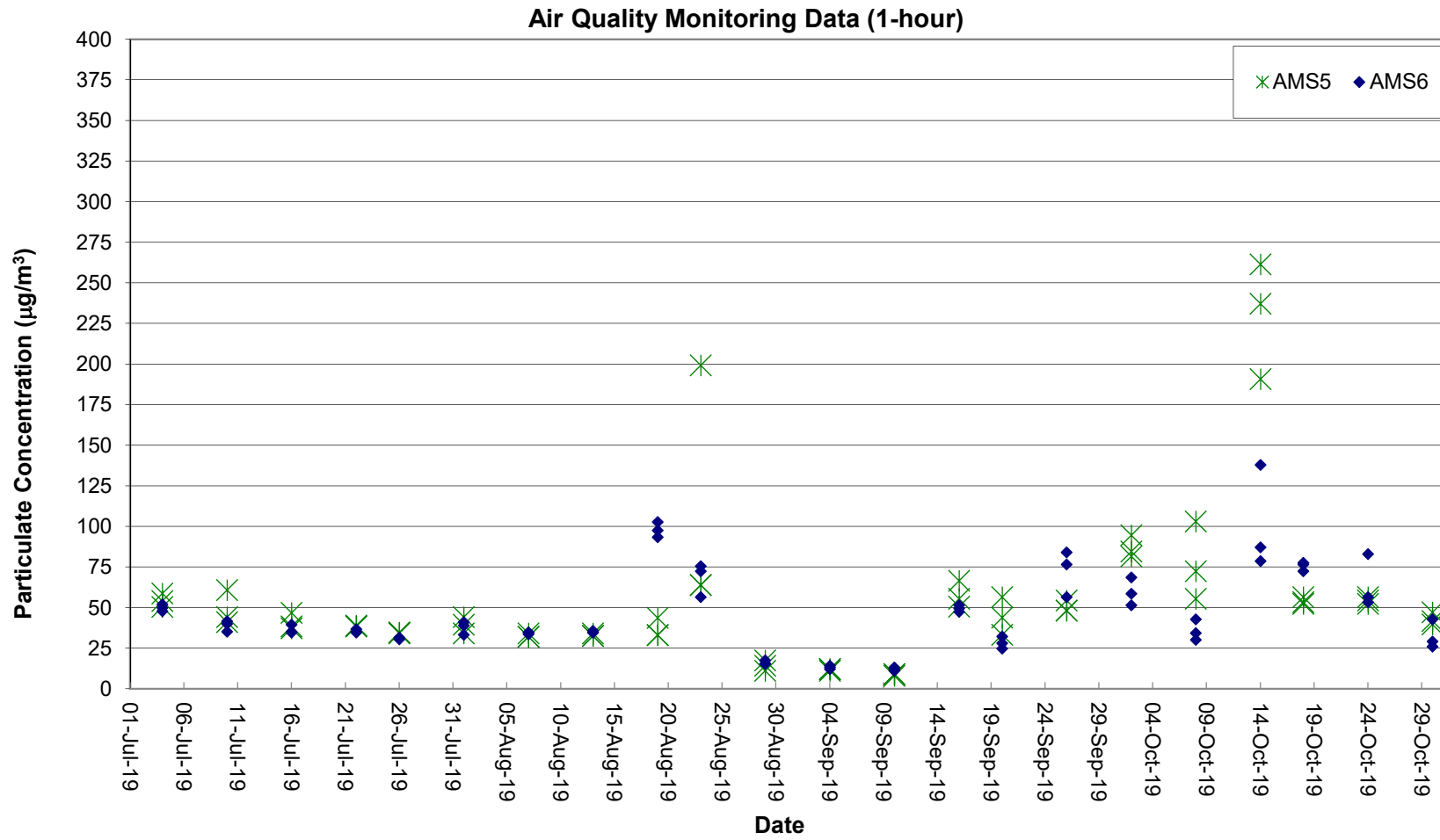


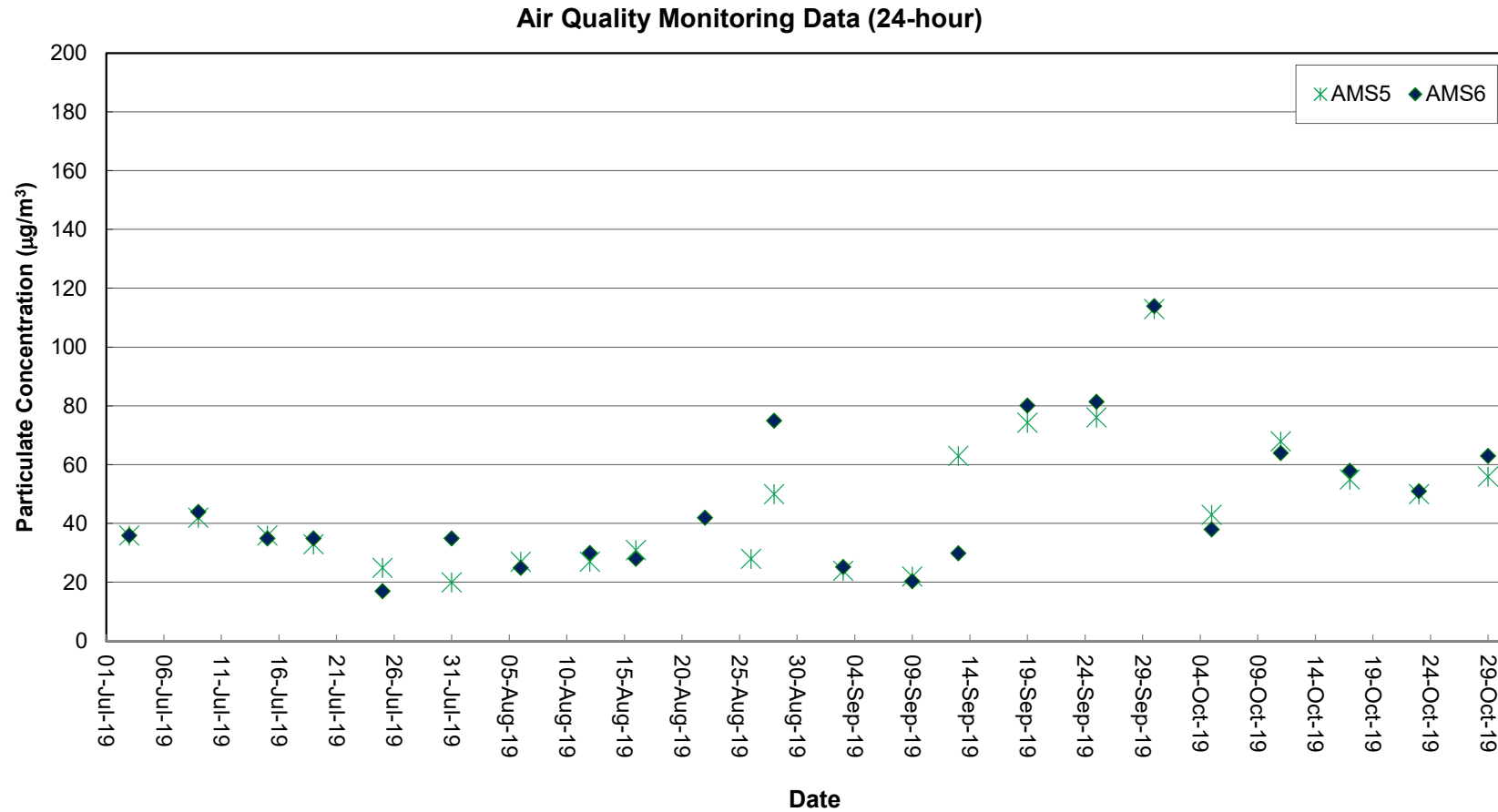
## Air Quality Monitoring Data

Project	Works	Date (yyyy-mm-dd)	Station	Time	Parameter	Results	Unit
HKLR	HY/2011/03	2019-10-02	AMS5	08:41	1-hr TSP	85	µg/m <sup>3</sup>
HKLR	HY/2011/03	2019-10-02	AMS5	09:41	1-hr TSP	82	µg/m <sup>3</sup>
HKLR	HY/2011/03	2019-10-02	AMS5	10:41	1-hr TSP	95	µg/m <sup>3</sup>
HKLR	HY/2011/03	2019-10-08	AMS5	09:00	1-hr TSP	103	µg/m <sup>3</sup>
HKLR	HY/2011/03	2019-10-08	AMS5	10:00	1-hr TSP	72	µg/m <sup>3</sup>
HKLR	HY/2011/03	2019-10-08	AMS5	11:00	1-hr TSP	56	µg/m <sup>3</sup>
HKLR	HY/2011/03	2019-10-14	AMS5	09:00	1-hr TSP	237	µg/m <sup>3</sup>
HKLR	HY/2011/03	2019-10-14	AMS5	10:00	1-hr TSP	262	µg/m <sup>3</sup>
HKLR	HY/2011/03	2019-10-14	AMS5	11:00	1-hr TSP	191	µg/m <sup>3</sup>
HKLR	HY/2011/03	2019-10-18	AMS5	09:00	1-hr TSP	52	µg/m <sup>3</sup>
HKLR	HY/2011/03	2019-10-18	AMS5	10:00	1-hr TSP	53	µg/m <sup>3</sup>
HKLR	HY/2011/03	2019-10-18	AMS5	11:00	1-hr TSP	57	µg/m <sup>3</sup>
HKLR	HY/2011/03	2019-10-24	AMS5	09:00	1-hr TSP	54	µg/m <sup>3</sup>
HKLR	HY/2011/03	2019-10-24	AMS5	10:00	1-hr TSP	52	µg/m <sup>3</sup>
HKLR	HY/2011/03	2019-10-24	AMS5	11:00	1-hr TSP	57	µg/m <sup>3</sup>
HKLR	HY/2011/03	2019-10-30	AMS5	09:00	1-hr TSP	40	µg/m <sup>3</sup>
HKLR	HY/2011/03	2019-10-30	AMS5	10:00	1-hr TSP	42	µg/m <sup>3</sup>
HKLR	HY/2011/03	2019-10-30	AMS5	11:00	1-hr TSP	47	µg/m <sup>3</sup>
HKLR	HY/2011/03	2019-10-05	AMS5	08:00	24-hr TSP	43	µg/m <sup>3</sup>
HKLR	HY/2011/03	2019-10-11	AMS5	08:00	24-hr TSP	68	µg/m <sup>3</sup>
HKLR	HY/2011/03	2019-10-17	AMS5	08:00	24-hr TSP	55	µg/m <sup>3</sup>
HKLR	HY/2011/03	2019-10-23	AMS5	08:00	24-hr TSP	50	µg/m <sup>3</sup>
HKLR	HY/2011/03	2019-10-29	AMS5	08:00	24-hr TSP	56	µg/m <sup>3</sup>
HKLR	HY/2011/03	2019-10-02	AMS6	13:01	1-hr TSP	69	µg/m <sup>3</sup>
HKLR	HY/2011/03	2019-10-02	AMS6	14:01	1-hr TSP	59	µg/m <sup>3</sup>
HKLR	HY/2011/03	2019-10-02	AMS6	15:01	1-hr TSP	52	µg/m <sup>3</sup>
HKLR	HY/2011/03	2019-10-08	AMS6	13:00	1-hr TSP	43	µg/m <sup>3</sup>
HKLR	HY/2011/03	2019-10-08	AMS6	14:00	1-hr TSP	34	µg/m <sup>3</sup>
HKLR	HY/2011/03	2019-10-08	AMS6	15:00	1-hr TSP	30	µg/m <sup>3</sup>
HKLR	HY/2011/03	2019-10-14	AMS6	13:00	1-hr TSP	138	µg/m <sup>3</sup>
HKLR	HY/2011/03	2019-10-14	AMS6	14:00	1-hr TSP	87	µg/m <sup>3</sup>
HKLR	HY/2011/03	2019-10-14	AMS6	15:00	1-hr TSP	79	µg/m <sup>3</sup>
HKLR	HY/2011/03	2019-10-18	AMS6	13:00	1-hr TSP	77	µg/m <sup>3</sup>
HKLR	HY/2011/03	2019-10-18	AMS6	14:00	1-hr TSP	72	µg/m <sup>3</sup>
HKLR	HY/2011/03	2019-10-18	AMS6	15:00	1-hr TSP	78	µg/m <sup>3</sup>
HKLR	HY/2011/03	2019-10-24	AMS6	13:00	1-hr TSP	53	µg/m <sup>3</sup>
HKLR	HY/2011/03	2019-10-24	AMS6	14:00	1-hr TSP	57	µg/m <sup>3</sup>
HKLR	HY/2011/03	2019-10-24	AMS6	15:00	1-hr TSP	83	µg/m <sup>3</sup>
HKLR	HY/2011/03	2019-10-30	AMS6	13:00	1-hr TSP	43	µg/m <sup>3</sup>
HKLR	HY/2011/03	2019-10-30	AMS6	14:00	1-hr TSP	29	µg/m <sup>3</sup>
HKLR	HY/2011/03	2019-10-30	AMS6	15:00	1-hr TSP	26	µg/m <sup>3</sup>
HKLR	HY/2011/03	2019-10-05	AMS6	08:00	24-hr TSP	38	µg/m <sup>3</sup>
HKLR	HY/2011/03	2019-10-11	AMS6	08:00	24-hr TSP	64	µg/m <sup>3</sup>
HKLR	HY/2011/03	2019-10-17	AMS6	08:00	24-hr TSP	58	µg/m <sup>3</sup>
HKLR	HY/2011/03	2019-10-23	AMS6	08:00	24-hr TSP	51	µg/m <sup>3</sup>
HKLR	HY/2011/03	2019-10-29	AMS6	08:00	24-hr TSP	63	µg/m <sup>3</sup>

Graphical Plot of 1-hour TSP at AMS5 and AMS6



Graphical Plot of 24-hour TSP at AMS5 and AMS6



Remark:

1) Due to malfunction of the high volume sampler (HVS), monitoring time for 24-hr TSP monitoring on 22 August 2019 at AMS5 (Ma Wan Chung Village) was less than 24 hours. The 24-hr TSP monitoring on 22 August 2019 at AMS5 was rescheduled to 26 August 2019.

Noise Monitoring Data

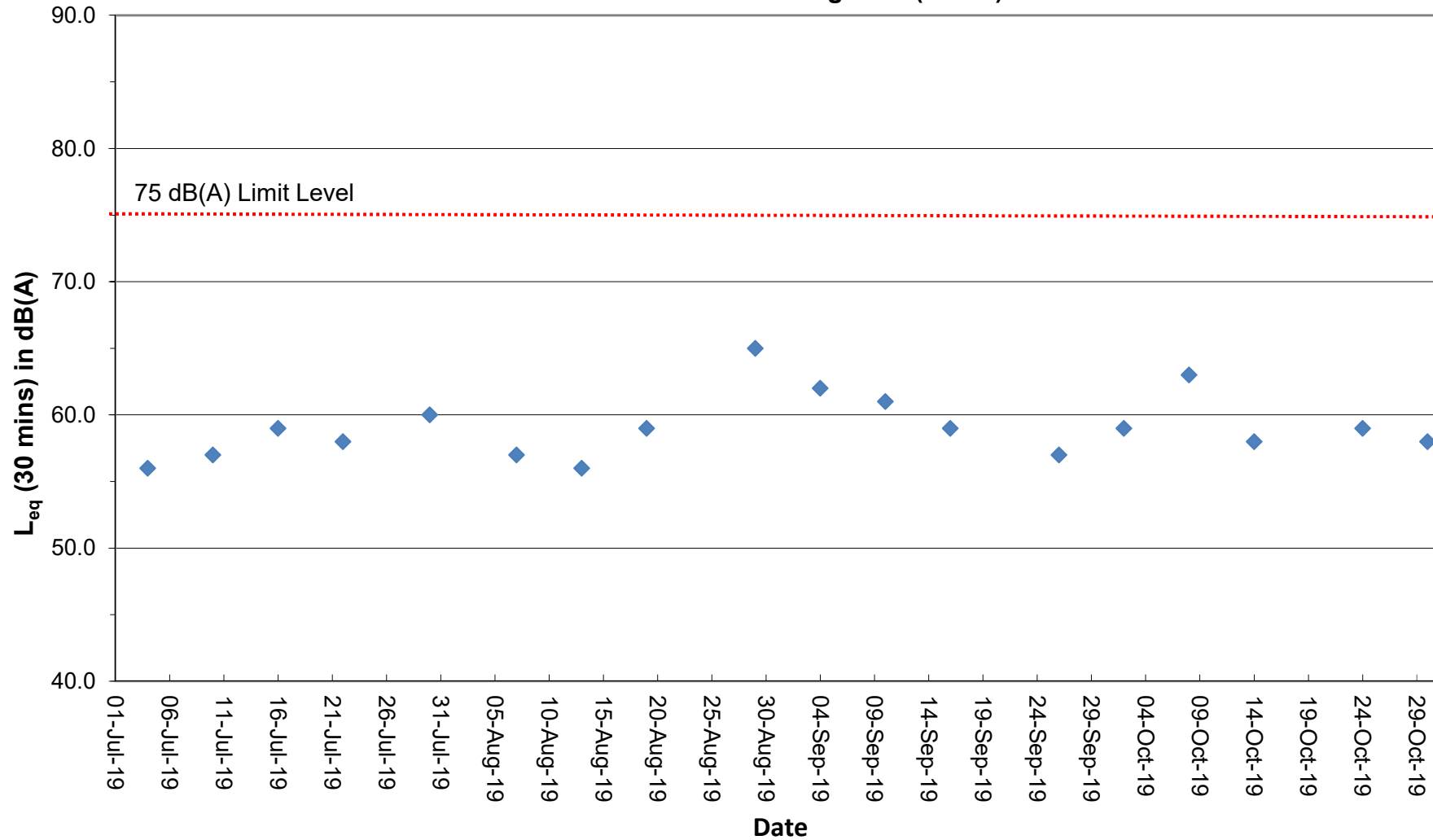
Project	Works	Date (yyyy-mm-dd)	Station	Start Time	Wind Speed, m/s	1st set 5mins		2nd set 5mins		3rd set 5mins		4th set 5mins		5th set 5mins		6th set 5mins		Overall (30mins)*	Unit	
						Leq:	L10:	L90:	Leq:	L10:	L90:	Leq:	L10:	L90:	Leq:	L10:	L90:			Leq:
HKLR	HY/2011/03	2019-10-02	NMS5	09:19	<5	Leq:	52.4	Leq:	53.6	Leq:	52.0	Leq:	52.9	Leq:	60.9	Leq:	51.8	Leq:	59	dB(A)
						L10:	53.0	L10:	57.0	L10:	53.5	L10:	55.5	L10:	60.0	L10:	53.5	L10:	59	
						L90:	49.5	L90:	49.0	L90:	49.5	L90:	49.5	L90:	50.0	L90:	49.5	L90:	53	
HKLR	HY/2011/03	2019-10-08	NMS5	09:40	<5	Leq:	54.8	Leq:	52.2	Leq:	56.3	Leq:	61.5	Leq:	63.3	Leq:	60.5	Leq:	63	dB(A)
						L10:	57.5	L10:	54.5	L10:	59.5	L10:	63.5	L10:	60.0	L10:	62.5	L10:	64	
						L90:	50.5	L90:	49.0	L90:	49.5	L90:	62.0	L90:	53.0	L90:	54.0	L90:	59	
HKLR	HY/2011/03	2019-10-14	NMS5	09:15	<5	Leq:	56.0	Leq:	53.6	Leq:	54.5	Leq:	53.0	Leq:	53.7	Leq:	57.1	Leq:	58	dB(A)
						L10:	60.0	L10:	56.0	L10:	57.0	L10:	56.0	L10:	57.0	L10:	60.5	L10:	61	
						L90:	49.0	L90:	49.0	L90:	49.5	L90:	48.5	L90:	48.5	L90:	49.5	L90:	52	
HKLR	HY/2011/03	2019-10-24	NMS5	09:15	<5	Leq:	55.4	Leq:	55.9	Leq:	55.0	Leq:	55.5	Leq:	55.9	Leq:	56.0	Leq:	59	dB(A)
						L10:	57.0	L10:	58.0	L10:	56.0	L10:	57.0	L10:	58.0	L10:	58.5	L10:	60	
						L90:	53.0	L90:	52.5	L90:	53.0	L90:	53.0	L90:	52.5	L90:	52.5	L90:	56	
HKLR	HY/2011/03	2019-10-30	NMS5	10:36	<5	Leq:	56.6	Leq:	54.6	Leq:	54.1	Leq:	54.2	Leq:	56.3	Leq:	54.7	Leq:	58	dB(A)
						L10:	58.5	L10:	57.0	L10:	57.0	L10:	57.0	L10:	59.5	L10:	57.0	L10:	61	
						L90:	54.0	L90:	51.0	L90:	50.5	L90:	50.5	L90:	51.0	L90:	51.5	L90:	55	

Remark:

(1)\* A facade correction of +3 dB(A) was applied to the measured noise level.

# Graphical Plot of Noise Levels at NMS5

## Continuous Noise Monitoring Data (NMS5)



Remark:

(1) A facade correction of +3 dB(A) was applied to the measured noise level.