

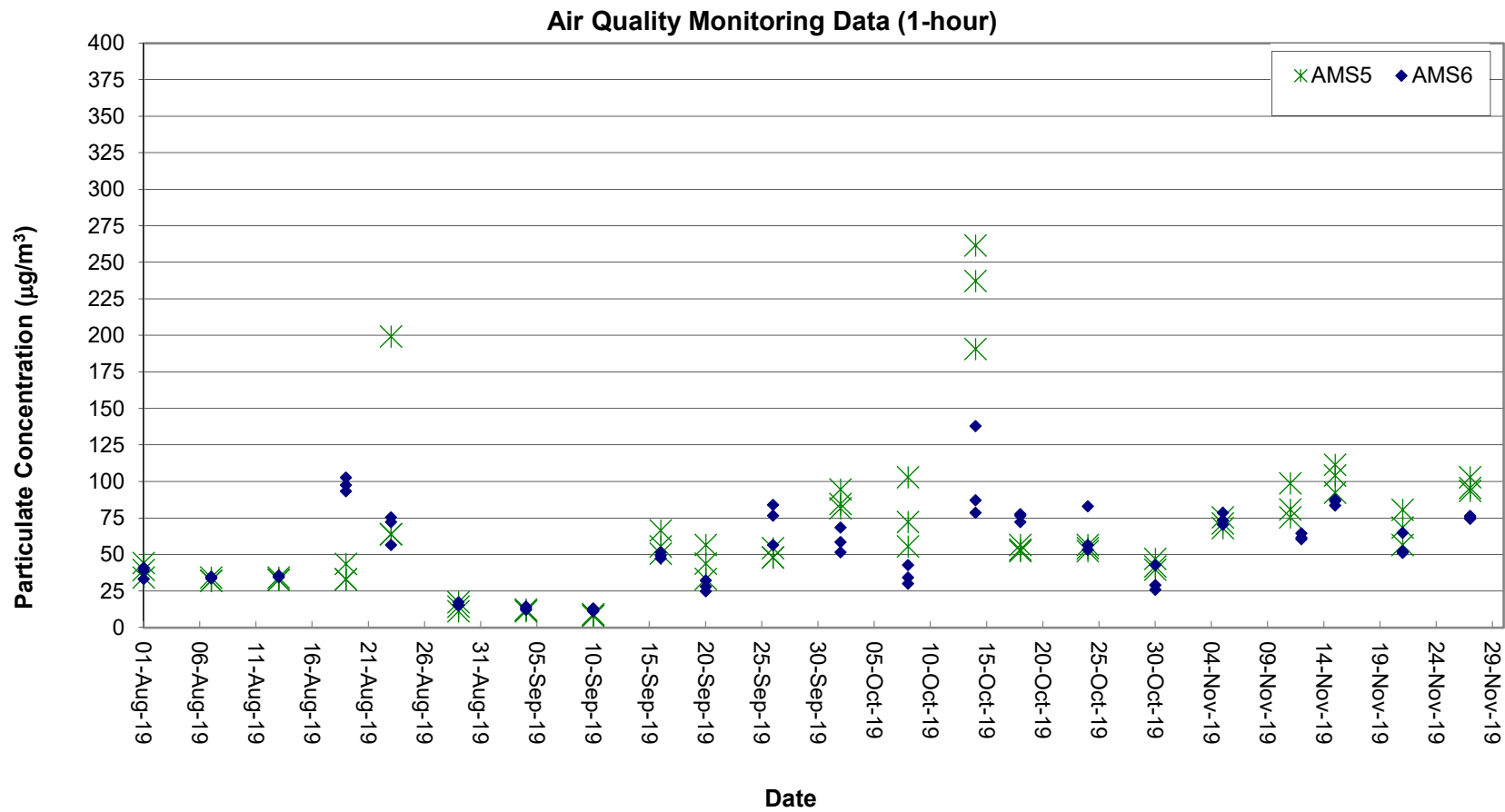
Air Quality Monitoring Data

Project	Works	Date (yyyy-mm-dd)	Station	Time	Parameter	Results	Unit
HKLR	HY/2011/03	2019-11-05	AMS5	09:00	1-hr TSP	76	µg/m ³
HKLR	HY/2011/03	2019-11-05	AMS5	10:00	1-hr TSP	71	µg/m ³
HKLR	HY/2011/03	2019-11-05	AMS5	11:00	1-hr TSP	68	µg/m ³
HKLR	HY/2011/03	2019-11-11	AMS5	09:05	1-hr TSP	99	µg/m ³
HKLR	HY/2011/03	2019-11-11	AMS5	10:05	1-hr TSP	76	µg/m ³
HKLR	HY/2011/03	2019-11-11	AMS5	11:05	1-hr TSP	81	µg/m ³
HKLR	HY/2011/03	2019-11-15	AMS5	09:00	1-hr TSP	104	µg/m ³
HKLR	HY/2011/03	2019-11-15	AMS5	10:00	1-hr TSP	112	µg/m ³
HKLR	HY/2011/03	2019-11-15	AMS5	11:00	1-hr TSP	92	µg/m ³
HKLR	HY/2011/03	2019-11-21	AMS5	09:51	1-hr TSP	69	µg/m ³
HKLR	HY/2011/03	2019-11-21	AMS5	10:51	1-hr TSP	57	µg/m ³
HKLR	HY/2011/03	2019-11-21	AMS5	13:05	1-hr TSP	81	µg/m ³
HKLR	HY/2011/03	2019-11-27	AMS5	09:05	1-hr TSP	94	µg/m ³
HKLR	HY/2011/03	2019-11-27	AMS5	10:05	1-hr TSP	103	µg/m ³
HKLR	HY/2011/03	2019-11-27	AMS5	11:05	1-hr TSP	96	µg/m ³
HKLR	HY/2011/03	2019-11-04	AMS5	08:00	24-hr TSP	105	µg/m ³
HKLR	HY/2011/03	2019-11-08	AMS5	08:00	24-hr TSP	84	µg/m ³
HKLR	HY/2011/03	2019-11-14	AMS5	08:00	24-hr TSP	97	µg/m ³
HKLR	HY/2011/03	2019-11-20	AMS5	08:00	24-hr TSP	75	µg/m ³
HKLR	HY/2011/03	2019-11-26	AMS5	08:00	24-hr TSP	67	µg/m ³
HKLR	HY/2011/03	2019-11-05	AMS6	08:00	1-hr TSP	79	µg/m ³
HKLR	HY/2011/03	2019-11-05	AMS6	09:00	1-hr TSP	74	µg/m ³
HKLR	HY/2011/03	2019-11-05	AMS6	10:00	1-hr TSP	71	µg/m ³
HKLR	HY/2011/03	2019-11-12	AMS6	13:02	1-hr TSP	61	µg/m ³
HKLR	HY/2011/03	2019-11-12	AMS6	14:02	1-hr TSP	65	µg/m ³
HKLR	HY/2011/03	2019-11-12	AMS6	15:02	1-hr TSP	62	µg/m ³
HKLR	HY/2011/03	2019-11-15	AMS6	08:30	1-hr TSP	87	µg/m ³
HKLR	HY/2011/03	2019-11-15	AMS6	09:30	1-hr TSP	84	µg/m ³
HKLR	HY/2011/03	2019-11-15	AMS6	10:30	1-hr TSP	88	µg/m ³
HKLR	HY/2011/03	2019-11-21	AMS6	09:09	1-hr TSP	65	µg/m ³
HKLR	HY/2011/03	2019-11-21	AMS6	10:09	1-hr TSP	52	µg/m ³
HKLR	HY/2011/03	2019-11-21	AMS6	11:09	1-hr TSP	51	µg/m ³
HKLR	HY/2011/03	2019-11-27	AMS6	08:20	1-hr TSP	76	µg/m ³
HKLR	HY/2011/03	2019-11-27	AMS6	09:20	1-hr TSP	77	µg/m ³
HKLR	HY/2011/03	2019-11-27	AMS6	10:20	1-hr TSP	75	µg/m ³
HKLR	HY/2011/03	2019-11-04	AMS6	08:00	24-hr TSP	120	µg/m ³
HKLR	HY/2011/03	2019-11-08	AMS6	08:00	24-hr TSP	77	µg/m ³
HKLR	HY/2011/03	2019-11-14	AMS6	08:00	24-hr TSP	102	µg/m ³
HKLR	HY/2011/03	2019-11-20	AMS6	08:00	24-hr TSP	83	µg/m ³
HKLR	HY/2011/03	2019-11-26	AMS6	08:00	24-hr TSP	61	µg/m ³

Remark:

1) Due to unexpected traffic conditions and safety reason, the 1-hr TSP monitoring at AMS6-Dragonair Building was rescheduled from 11 Nov 2019 to 12 Nov 2019.

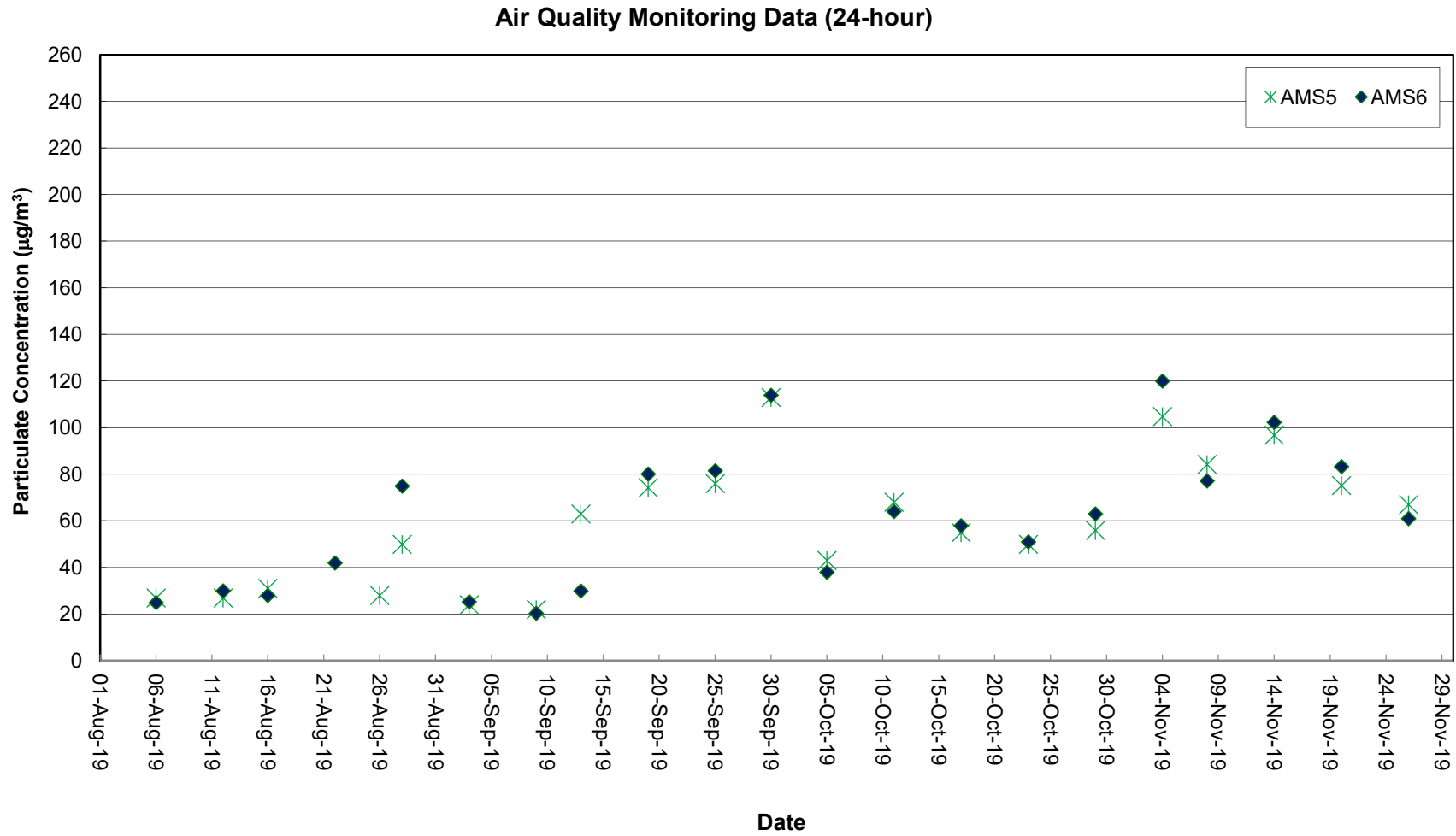
Graphical Plot of 1-hour TSP at AMS5 and AMS6



Remark:

1) Due to unexpected traffic conditions and safety reason, the 1-hr TSP monitoring at AMS6-Dragonair Building was rescheduled from 11 Nov 2019 to 12 Nov 2019.

Graphical Plot of 24-hour TSP at AMS5 and AMS6



Remark:

1) Due to malfunction of the high volume sampler (HVS), monitoring time for 24-hr TSP monitoring on 22 August 2019 at AMS5 (Ma Wan Chung Village) was less than 24 hours. The 24-hr TSP monitoring on 22 August 2019 at AMS5 was rescheduled to 26 August 2019.

Noise Monitoring Data

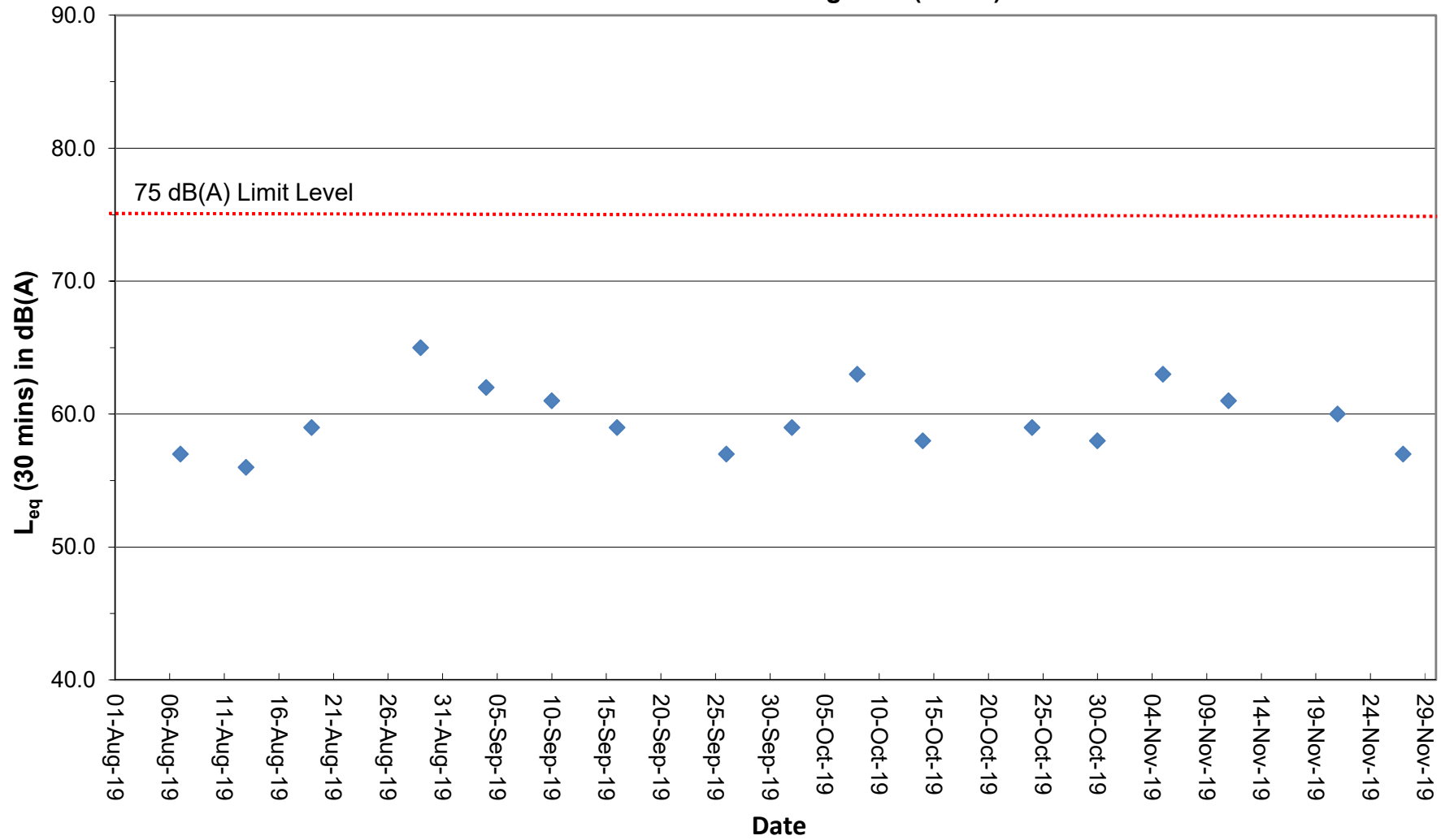
Project	Works	Date (yyyy-mm-dd)	Station	Start Time	Wind Speed, m/s	1st set 5mins		2nd set 5mins		3rd set 5mins		4th set 5mins		5th set 5mins		6th set 5mins		Overall (30mins)*	Unit	
						Leq:	L10:	L90:	Leq:	L10:	L90:	Leq:	L10:	L90:	Leq:	L10:	L90:			Leq:
HKLR	HY/2011/03	2019-11-05	NMS5	10:45	<5	Leq:	54.5	Leq:	59.5	Leq:	55.0	Leq:	62.4	Leq:	62.8	Leq:	57.7	Leq:	63	dB(A)
						L10:	56.5	L10:	60.5	L10:	58.0	L10:	68.0	L10:	67.0	L10:	60.0	L10:	67	
						L90:	52.0	L90:	51.0	L90:	51.0	L90:	54.0	L90:	52.5	L90:	52.5	L90:	55	
HKLR	HY/2011/03	2019-11-11	NMS5	09:49	<5	Leq:	54.8	Leq:	55.3	Leq:	61.0	Leq:	59.8	Leq:	54.9	Leq:	54.1	Leq:	61	dB(A)
						L10:	56.5	L10:	56.5	L10:	62.0	L10:	57.0	L10:	56.5	L10:	55.5	L10:	61	
						L90:	51.5	L90:	52.0	L90:	52.5	L90:	53.0	L90:	51.5	L90:	51.0	L90:	55	
HKLR	HY/2011/03	2019-11-21	NMS5	10:30	<5	Leq:	56.5	Leq:	57.4	Leq:	56.5	Leq:	56.7	Leq:	57.0	Leq:	57.0	Leq:	60	dB(A)
						L10:	58.5	L10:	60.5	L10:	58.0	L10:	59.0	L10:	60.0	L10:	59.0	L10:	62	
						L90:	53.5	L90:	52.5	L90:	53.0	L90:	52.5	L90:	53.0	L90:	53.5	L90:	56	
HKLR	HY/2011/03	2019-11-27	NMS5	09:38	<5	Leq:	54.2	Leq:	51.6	Leq:	54.0	Leq:	53.2	Leq:	54.3	Leq:	53.4	Leq:	57	dB(A)
						L10:	57.0	L10:	53.5	L10:	56.5	L10:	56.0	L10:	57.0	L10:	55.5	L10:	59	
						L90:	50.0	L90:	48.5	L90:	49.5	L90:	48.5	L90:	50.0	L90:	50.0	L90:	52	

Remark:

(1)* A facade correction of +3 dB(A) was applied to the measured noise level.

Graphical Plot of Noise Levels at NMS5

Continuous Noise Monitoring Data (NMS5)



Remark:

(1) A facade correction of +3 dB(A) was applied to the measured noise level.