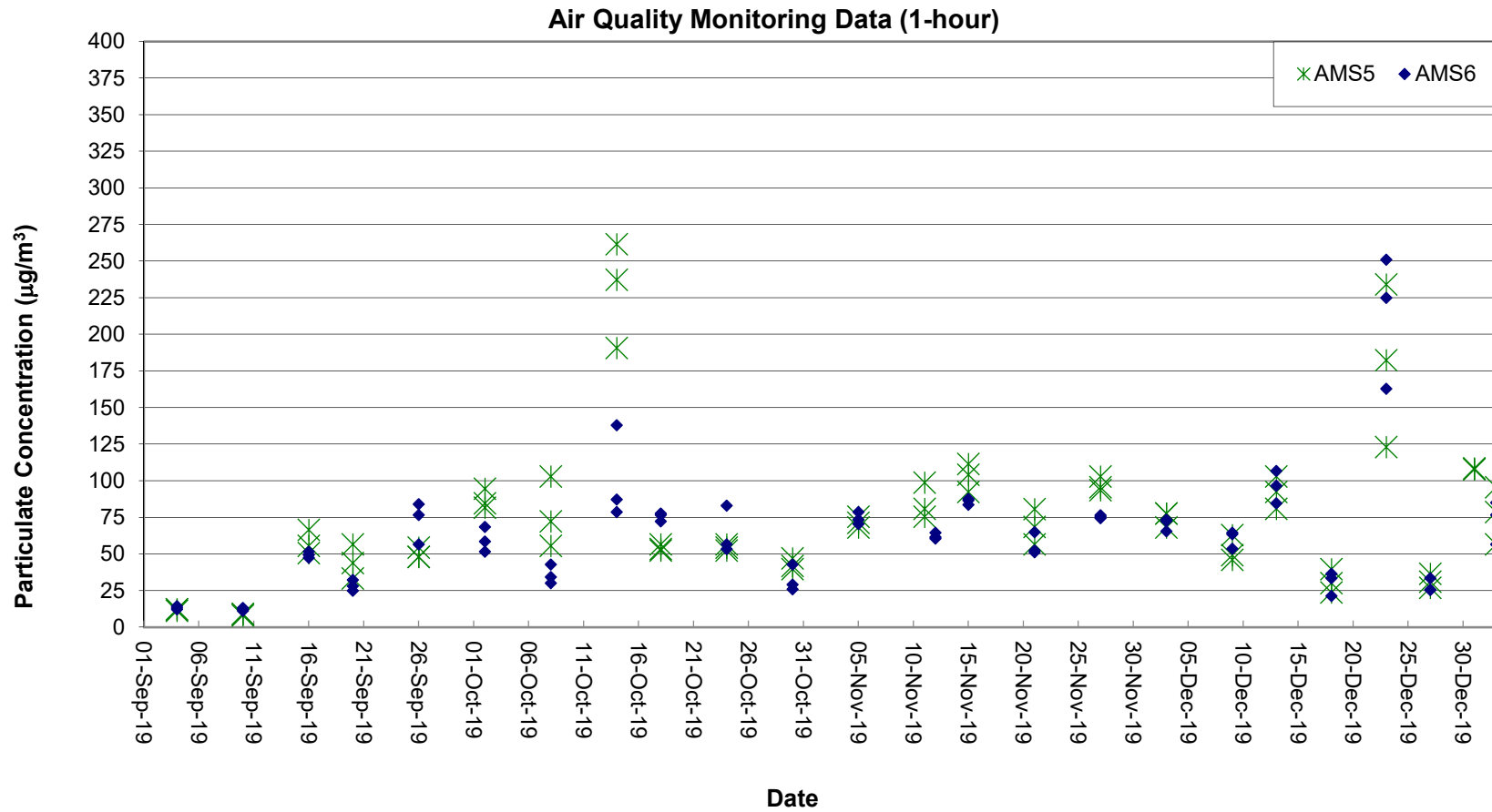


Air Quality Monitoring Data

Project	Works	Date (yyyy-mm-dd)	Station	Time	Parameter	Results	Unit
HKLR	HY/2011/03	2019-12-03	AMS5	08:45	1-hr TSP	78	µg/m ³
HKLR	HY/2011/03	2019-12-03	AMS5	09:45	1-hr TSP	78	µg/m ³
HKLR	HY/2011/03	2019-12-03	AMS5	10:45	1-hr TSP	68	µg/m ³
HKLR	HY/2011/03	2019-12-09	AMS5	09:01	1-hr TSP	63	µg/m ³
HKLR	HY/2011/03	2019-12-09	AMS5	10:01	1-hr TSP	49	µg/m ³
HKLR	HY/2011/03	2019-12-09	AMS5	11:01	1-hr TSP	46	µg/m ³
HKLR	HY/2011/03	2019-12-13	AMS5	08:18	1-hr TSP	103	µg/m ³
HKLR	HY/2011/03	2019-12-13	AMS5	09:18	1-hr TSP	92	µg/m ³
HKLR	HY/2011/03	2019-12-13	AMS5	10:18	1-hr TSP	81	µg/m ³
HKLR	HY/2011/03	2019-12-18	AMS5	09:02	1-hr TSP	40	µg/m ³
HKLR	HY/2011/03	2019-12-18	AMS5	10:02	1-hr TSP	30	µg/m ³
HKLR	HY/2011/03	2019-12-18	AMS5	11:02	1-hr TSP	24	µg/m ³
HKLR	HY/2011/03	2019-12-23	AMS5	09:05	1-hr TSP	234	µg/m ³
HKLR	HY/2011/03	2019-12-23	AMS5	10:05	1-hr TSP	182	µg/m ³
HKLR	HY/2011/03	2019-12-23	AMS5	11:05	1-hr TSP	123	µg/m ³
HKLR	HY/2011/03	2019-12-27	AMS5	08:00	1-hr TSP	27	µg/m ³
HKLR	HY/2011/03	2019-12-27	AMS5	09:00	1-hr TSP	31	µg/m ³
HKLR	HY/2011/03	2019-12-27	AMS5	10:00	1-hr TSP	37	µg/m ³
HKLR	HY/2011/03	2019-12-02	AMS5	08:00	24-hr TSP	107	µg/m ³
HKLR	HY/2011/03	2019-12-06	AMS5	08:00	24-hr TSP	110	µg/m ³
HKLR	HY/2011/03	2019-12-12	AMS5	08:00	24-hr TSP	90	µg/m ³
HKLR	HY/2011/03	2019-12-17	AMS5	08:00	24-hr TSP	65	µg/m ³
HKLR	HY/2011/03	2019-12-21	AMS5	08:00	24-hr TSP	89	µg/m ³
HKLR	HY/2011/03	2019-12-27	AMS5	11:05	24-hr TSP	114	µg/m ³
HKLR	HY/2011/03	2019-12-31	AMS5	08:00	24-hr TSP	76	µg/m ³
HKLR	HY/2011/03	2019-12-03	AMS6	08:13	1-hr TSP	74	µg/m ³
HKLR	HY/2011/03	2019-12-03	AMS6	09:13	1-hr TSP	73	µg/m ³
HKLR	HY/2011/03	2019-12-03	AMS6	10:13	1-hr TSP	66	µg/m ³
HKLR	HY/2011/03	2019-12-09	AMS6	08:17	1-hr TSP	65	µg/m ³
HKLR	HY/2011/03	2019-12-09	AMS6	09:17	1-hr TSP	64	µg/m ³
HKLR	HY/2011/03	2019-12-09	AMS6	10:17	1-hr TSP	54	µg/m ³
HKLR	HY/2011/03	2019-12-13	AMS6	08:57	1-hr TSP	107	µg/m ³
HKLR	HY/2011/03	2019-12-13	AMS6	09:57	1-hr TSP	97	µg/m ³
HKLR	HY/2011/03	2019-12-13	AMS6	10:57	1-hr TSP	85	µg/m ³
HKLR	HY/2011/03	2019-12-18	AMS6	08:11	1-hr TSP	33	µg/m ³
HKLR	HY/2011/03	2019-12-18	AMS6	09:11	1-hr TSP	37	µg/m ³
HKLR	HY/2011/03	2019-12-18	AMS6	10:11	1-hr TSP	21	µg/m ³
HKLR	HY/2011/03	2019-12-23	AMS6	08:20	1-hr TSP	251	µg/m ³
HKLR	HY/2011/03	2019-12-23	AMS6	09:20	1-hr TSP	225	µg/m ³
HKLR	HY/2011/03	2019-12-23	AMS6	10:20	1-hr TSP	163	µg/m ³
HKLR	HY/2011/03	2019-12-27	AMS6	08:37	1-hr TSP	25	µg/m ³
HKLR	HY/2011/03	2019-12-27	AMS6	09:37	1-hr TSP	25	µg/m ³
HKLR	HY/2011/03	2019-12-27	AMS6	10:37	1-hr TSP	33	µg/m ³
HKLR	HY/2011/03	2019-12-02	AMS6	08:00	24-hr TSP	101	µg/m ³
HKLR	HY/2011/03	2019-12-06	AMS6	08:00	24-hr TSP	113	µg/m ³
HKLR	HY/2011/03	2019-12-12	AMS6	08:00	24-hr TSP	81	µg/m ³
HKLR	HY/2011/03	2019-12-17	AMS6	08:00	24-hr TSP	74	µg/m ³
HKLR	HY/2011/03	2019-12-21	AMS6	08:00	24-hr TSP	96	µg/m ³
HKLR	HY/2011/03	2019-12-27	AMS6	12:05	24-hr TSP	88	µg/m ³
HKLR	HY/2011/03	2019-12-31	AMS6	08:00	24-hr TSP	73	µg/m ³

Graphical Plot of 1-hour TSP at AMS5 and AMS6

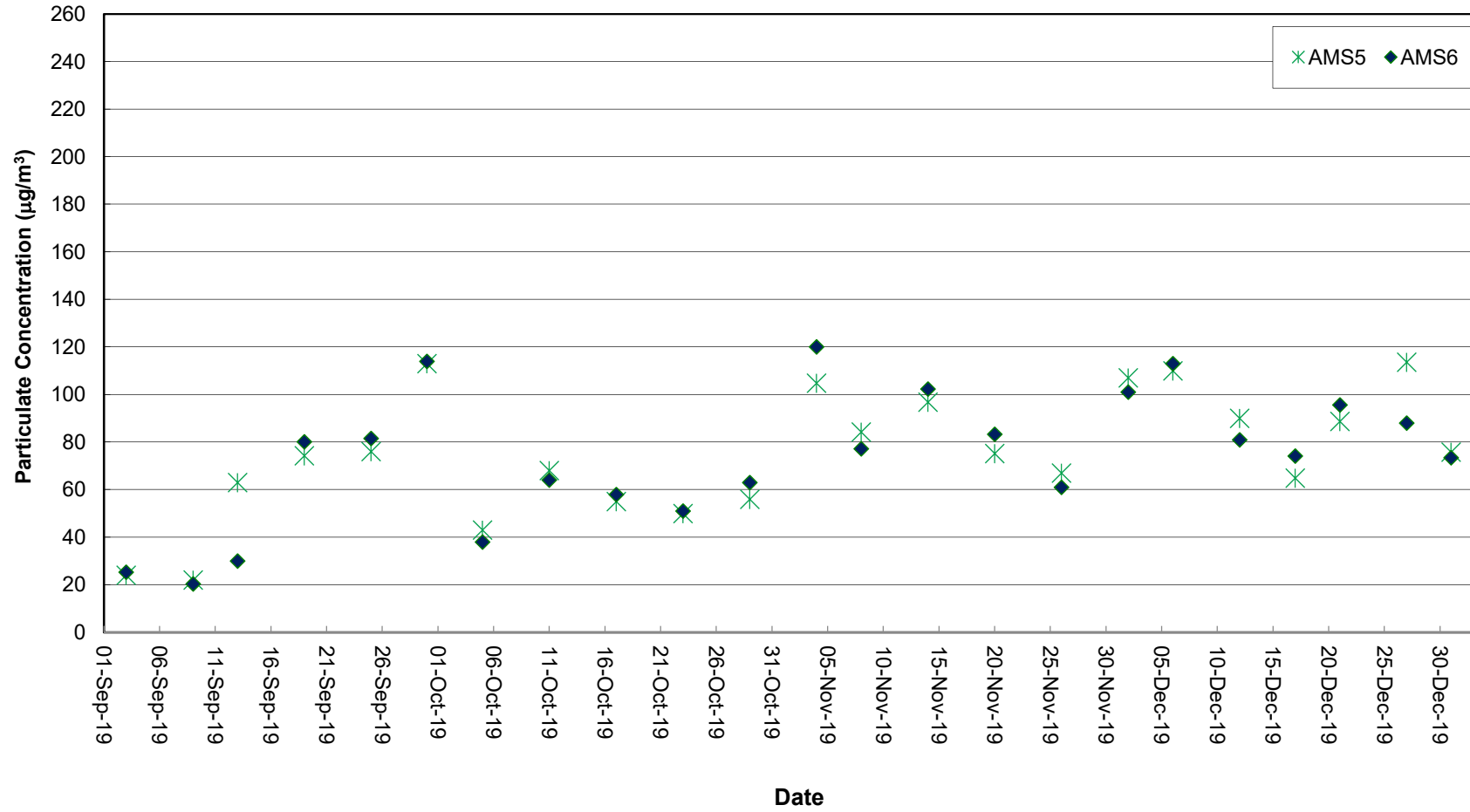


Remark:

1) Due to unexpected traffic conditions and safety reason, the 1-hr TSP monitoring at AMS6-Dragonair Building was rescheduled from 11 Nov 2019 to 12 Nov 2019.

Graphical Plot of 24-hour TSP at AMS5 and AMS6

Air Quality Monitoring Data (24-hour)



Noise Monitoring Data

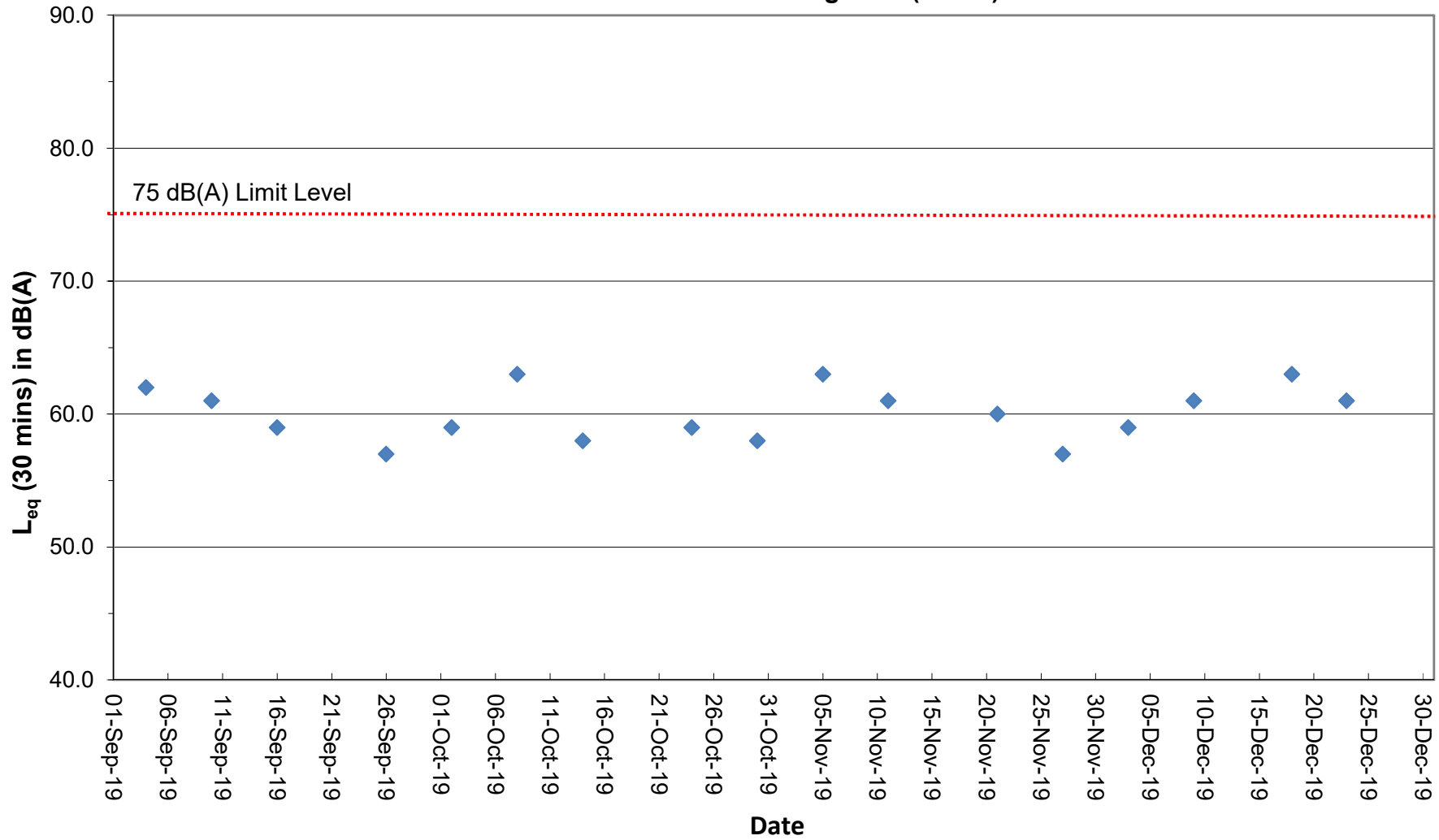
Project	Works	Date (yyyy-mm-dd)	Station	Start Time	Wind Speed, m/s	1st set 5mins		2nd set 5mins		3rd set 5mins		4th set 5mins		5th set 5mins		6th set 5mins		Overall (30mins)*	Unit	
						Leq:	L10:	L90:	Leq:	L10:	L90:	Leq:	L10:	L90:	Leq:	L10:	L90:			Leq:
HKLR	HY/2011/03	2019-12-03	NMS5	09:00	<5	Leq:	55.4	Leq:	56.5	Leq:	55.3	Leq:	55.4	Leq:	55.6	Leq:	55.6	Leq:	59	dB(A)
						L10:	57.5	L10:	59.0	L10:	57.5	L10:	57.5	L10:	58.0	L10:	57.5	L10:	61	
						L90:	52.0	L90:	52.0	L90:	52.5	L90:	52.0	L90:	51.5	L90:	53.5	L90:	55	
HKLR	HY/2011/03	2019-12-09	NMS5	13:00	<5	Leq:	56.8	Leq:	58.1	Leq:	56.6	Leq:	58.2	Leq:	58.3	Leq:	57.3	Leq:	61	dB(A)
						L10:	59.5	L10:	62.0	L10:	57.5	L10:	61.0	L10:	60.5	L10:	60.0	L10:	63	
						L90:	51.0	L90:	49.2	L90:	49.5	L90:	50.0	L90:	49.5	L90:	49.5	L90:	53	
HKLR	HY/2011/03	2019-12-18	NMS5	09:18	<5	Leq:	55.4	Leq:	57.3	Leq:	58.6	Leq:	61.8	Leq:	61.6	Leq:	61.2	Leq:	63	dB(A)
						L10:	57.5	L10:	61.0	L10:	60.0	L10:	63.5	L10:	53.5	L10:	62.5	L10:	64	
						L90:	51.5	L90:	51.0	L90:	53.0	L90:	54.0	L90:	54.0	L90:	51.5	L90:	56	
HKLR	HY/2011/03	2019-12-23	NMS5	10:58	<5	Leq:	58.9	Leq:	57.0	Leq:	60.2	Leq:	57.6	Leq:	56.6	Leq:	56.6	Leq:	61	dB(A)
						L10:	60.5	L10:	58.5	L10:	62.5	L10:	59.0	L10:	59.0	L10:	59.0	L10:	63	
						L90:	51.0	L90:	54.0	L90:	55.5	L90:	53.5	L90:	52.0	L90:	52.5	L90:	56	

Remark:

(1)* A facade correction of +3 dB(A) was applied to the measured noise level.

Graphical Plot of Noise Levels at NMS5

Continuous Noise Monitoring Data (NMS5)



Remark:

(1) A facade correction of +3 dB(A) was applied to the measured noise level.