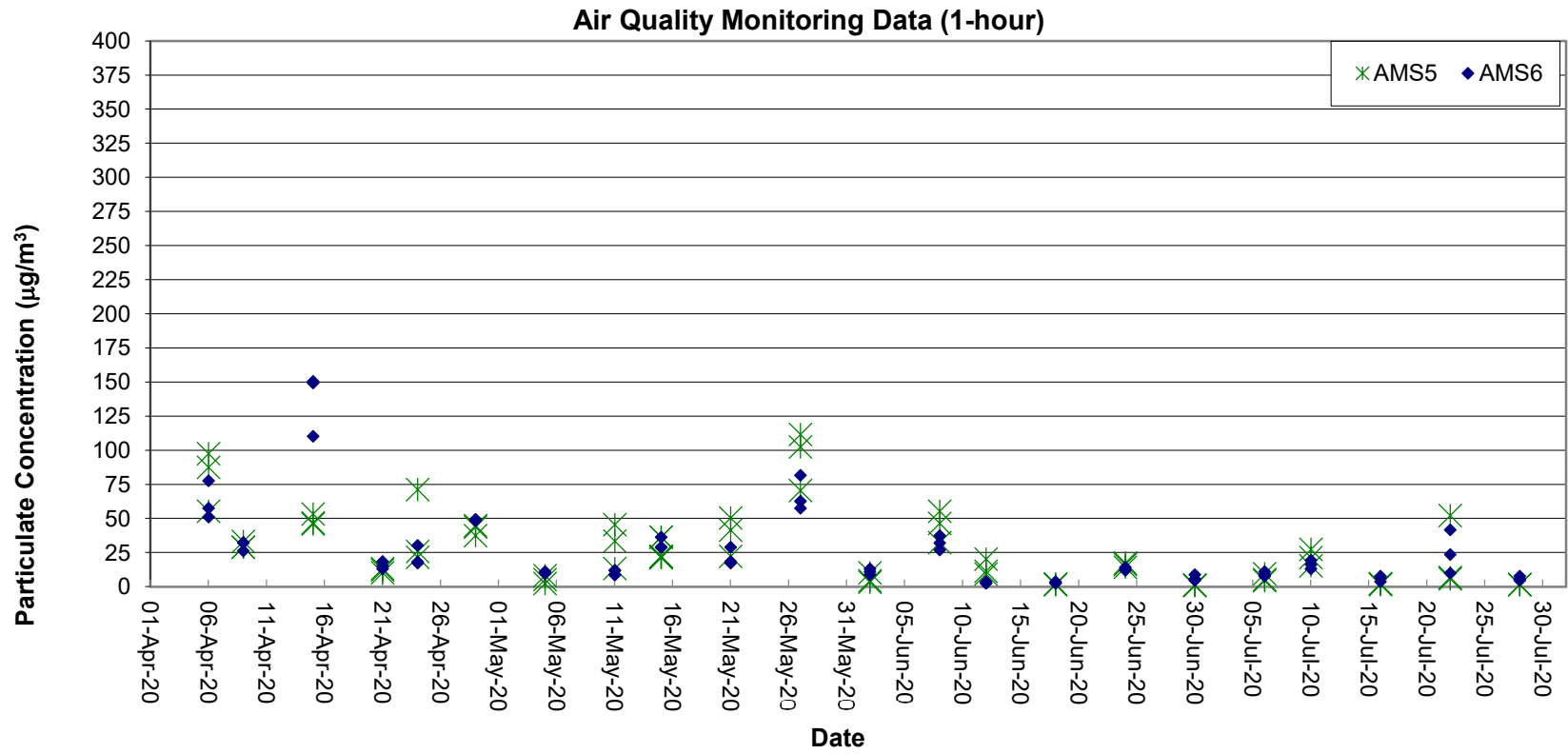


Air Quality Monitoring Data

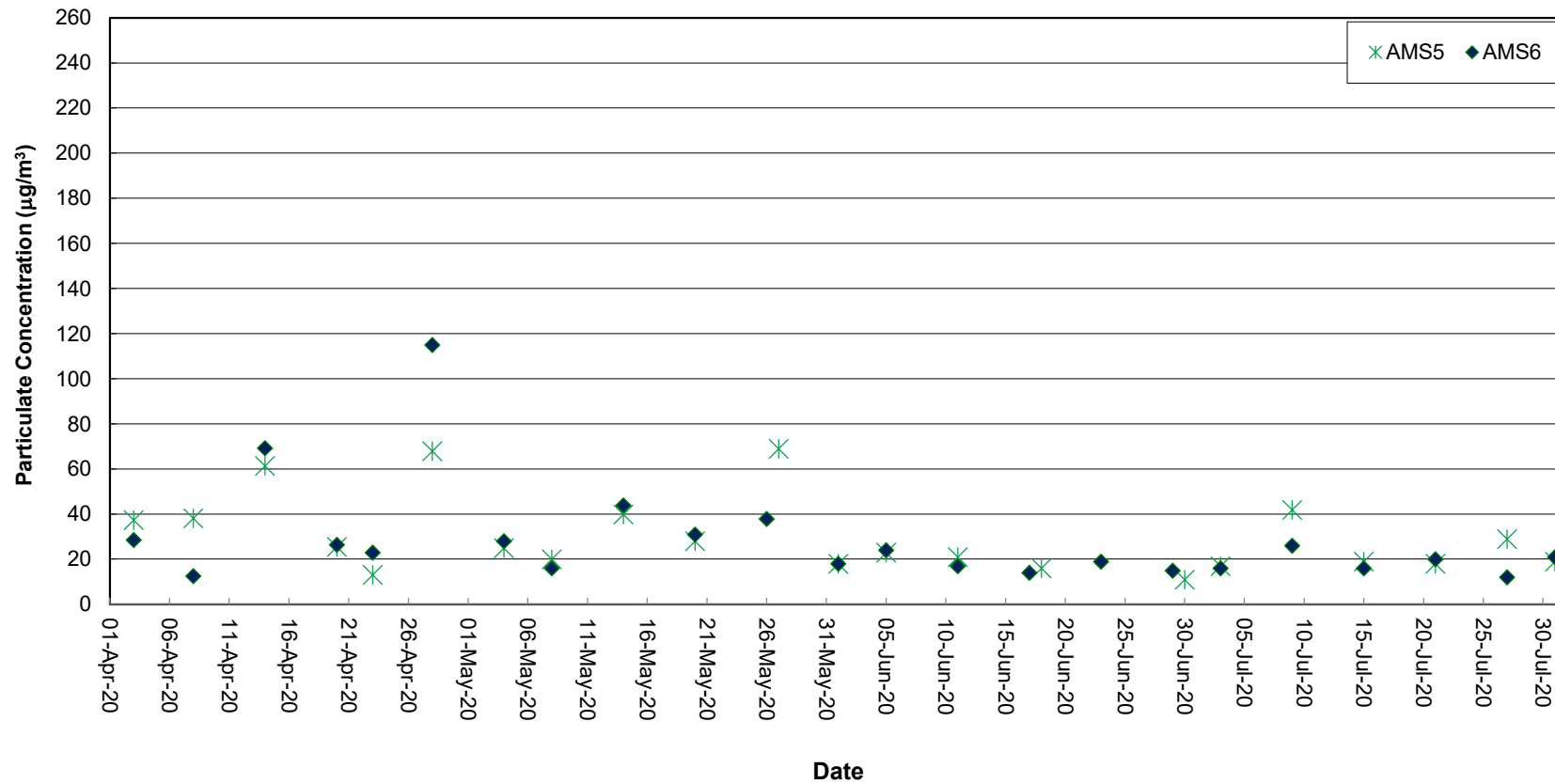
Project	Works	Date (yyyy-mm-dd)	Station	Time	Parameter	Results	Unit
HKLR	HY/2011/03	2020-07-06	AMS5	09:51	1-hr TSP	5	µg/m ³
HKLR	HY/2011/03	2020-07-06	AMS5	10:53	1-hr TSP	5	µg/m ³
HKLR	HY/2011/03	2020-07-06	AMS5	13:11	1-hr TSP	10	µg/m ³
HKLR	HY/2011/03	2020-07-10	AMS5	10:01	1-hr TSP	15	µg/m ³
HKLR	HY/2011/03	2020-07-10	AMS5	11:04	1-hr TSP	21	µg/m ³
HKLR	HY/2011/03	2020-07-10	AMS5	13:04	1-hr TSP	27	µg/m ³
HKLR	HY/2011/03	2020-07-16	AMS5	10:03	1-hr TSP	2	µg/m ³
HKLR	HY/2011/03	2020-07-16	AMS5	11:04	1-hr TSP	2	µg/m ³
HKLR	HY/2011/03	2020-07-16	AMS5	13:04	1-hr TSP	2	µg/m ³
HKLR	HY/2011/03	2020-07-22	AMS5	13:20	1-hr TSP	6	µg/m ³
HKLR	HY/2011/03	2020-07-22	AMS5	14:20	1-hr TSP	7	µg/m ³
HKLR	HY/2011/03	2020-07-22	AMS5	15:20	1-hr TSP	52	µg/m ³
HKLR	HY/2011/03	2020-07-28	AMS5	09:56	1-hr TSP	2	µg/m ³
HKLR	HY/2011/03	2020-07-28	AMS5	10:58	1-hr TSP	2	µg/m ³
HKLR	HY/2011/03	2020-07-28	AMS5	13:29	1-hr TSP	2	µg/m ³
HKLR	HY/2011/03	2020-07-03	AMS5	08:00	24-hr TSP	17	µg/m ³
HKLR	HY/2011/03	2020-07-09	AMS5	08:00	24-hr TSP	42	µg/m ³
HKLR	HY/2011/03	2020-07-15	AMS5	08:00	24-hr TSP	19	µg/m ³
HKLR	HY/2011/03	2020-07-21	AMS5	08:00	24-hr TSP	18	µg/m ³
HKLR	HY/2011/03	2020-07-27	AMS5	08:00	24-hr TSP	29	µg/m ³
HKLR	HY/2011/03	2020-07-31	AMS5	08:00	24-hr TSP	19	µg/m ³
HKLR	HY/2011/03	2020-07-06	AMS6	09:00	1-hr TSP	11	µg/m ³
HKLR	HY/2011/03	2020-07-06	AMS6	10:00	1-hr TSP	9	µg/m ³
HKLR	HY/2011/03	2020-07-06	AMS6	11:00	1-hr TSP	8	µg/m ³
HKLR	HY/2011/03	2020-07-10	AMS6	08:49	1-hr TSP	20	µg/m ³
HKLR	HY/2011/03	2020-07-10	AMS6	09:49	1-hr TSP	16	µg/m ³
HKLR	HY/2011/03	2020-07-10	AMS6	10:49	1-hr TSP	13	µg/m ³
HKLR	HY/2011/03	2020-07-16	AMS6	09:24	1-hr TSP	8	µg/m ³
HKLR	HY/2011/03	2020-07-16	AMS6	10:24	1-hr TSP	7	µg/m ³
HKLR	HY/2011/03	2020-07-16	AMS6	11:24	1-hr TSP	4	µg/m ³
HKLR	HY/2011/03	2020-07-22	AMS6	08:25	1-hr TSP	42	µg/m ³
HKLR	HY/2011/03	2020-07-22	AMS6	09:25	1-hr TSP	24	µg/m ³
HKLR	HY/2011/03	2020-07-22	AMS6	10:25	1-hr TSP	10	µg/m ³
HKLR	HY/2011/03	2020-07-28	AMS6	09:03	1-hr TSP	8	µg/m ³
HKLR	HY/2011/03	2020-07-28	AMS6	10:03	1-hr TSP	6	µg/m ³
HKLR	HY/2011/03	2020-07-28	AMS6	11:03	1-hr TSP	5	µg/m ³
HKLR	HY/2011/03	2020-07-03	AMS6	08:00	24-hr TSP	16	µg/m ³
HKLR	HY/2011/03	2020-07-09	AMS6	08:00	24-hr TSP	26	µg/m ³
HKLR	HY/2011/03	2020-07-15	AMS6	08:00	24-hr TSP	16	µg/m ³
HKLR	HY/2011/03	2020-07-21	AMS6	08:00	24-hr TSP	20	µg/m ³
HKLR	HY/2011/03	2020-07-27	AMS6	08:00	24-hr TSP	12	µg/m ³
HKLR	HY/2011/03	2020-07-31	AMS6	08:00	24-hr TSP	21	µg/m ³

Graphical Plot of 1-hour TSP at AMS5 and AMS6



Graphical Plot of 24-hour TSP at AMS5 and AMS6

Air Quality Monitoring Data (24-hour)



Remarks:

- 1) Due to power failure, 24-hr TSP monitoring on 26 May 2020 at AMS5 (Ma Wan Chung Village) was rescheduled to 27 May 2020.
- 2) Due to power failure, 24-hr TSP monitoring on 17 June 2020 at AMS5 was rescheduled to 18 June 2020.
- 3) Due to malfunction of HVS at AMS5, the 24-hr TSP monitoring on 23 June 2020 was cancelled. Competent person repaired the HVS on 30 June 2020. The 24-hr TSP monitoring on 29 June 2020 at AMS5 was rescheduled to 30 June 2020.

Noise Monitoring Data

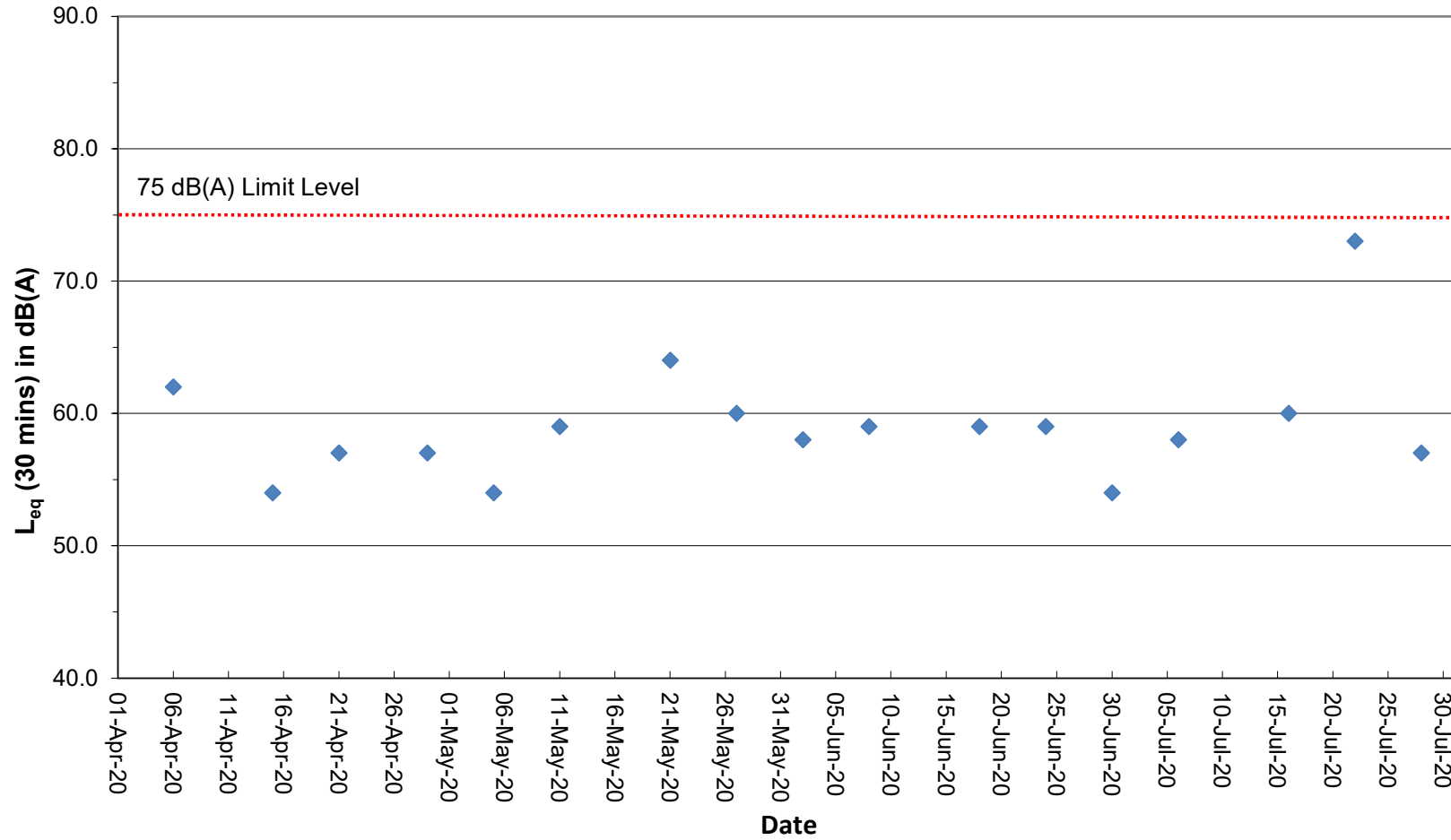
Project	Works	Date (yyyy-mm-dd)	Station	Start Time	Wind Speed, m/s	1st set 5mins			2nd set 5mins			3rd set 5mins			4th set 5mins			5th set 5mins			6th set 5mins			Overall (30mins)*	Unit
						Leq:	L10:	L90:	Leq:	L10:	L90:	Leq:	L10:	L90:	Leq:	L10:	L90:	Leq:	L10:	L90:	Leq:	L10:	L90:		
HKLR	HY/2011/03	2020-07-06	NMS5	10:18	<5	Leq:	55.4	Leq:	51.5	Leq:	54.3	Leq:	58.1	Leq:	51.8	Leq:	52.7	Leq:	58	dB(A)					
						L10:	58.0	L10:	53.5	L10:	52.0	L10:	62.5	L10:	52.5	L10:	53.5	L10:	60						
						L90:	48.5	L90:	49.0	L90:	49.0	L90:	49.5	L90:	50.0	L90:	50.5	L90:	52						
HKLR	HY/2011/03	2020-07-16	NMS5	10:17	<5	Leq:	56.4	Leq:	56.7	Leq:	57.7	Leq:	56.7	Leq:	57.3	Leq:	56.9	Leq:	60	dB(A)					
						L10:	58.0	L10:	57.0	L10:	58.5	L10:	57.0	L10:	58.5	L10:	57.5	L10:	61						
						L90:	55.5	L90:	56.0	L90:	56.5	L90:	56.0	L90:	56.0	L90:	56.0	L90:	59						
HKLR	HY/2011/03	2020-07-22	NMS5	13:08	<5	Leq:	70.5	Leq:	70.4	Leq:	70.2	Leq:	70.2	Leq:	69.2	Leq:	70.1	Leq:	73	dB(A)					
						L10:	71.5	L10:	71.5	L10:	71.0	L10:	71.0	L10:	69.5	L10:	71.0	L10:	74						
						L90:	69.5	L90:	69.0	L90:	69.0	L90:	69.0	L90:	68.5	L90:	69.0	L90:	72						
HKLR	HY/2011/03	2020-07-28	NMS5	10:08	<5	Leq:	51.5	Leq:	52.4	Leq:	51.1	Leq:	52.0	Leq:	54.7	Leq:	57.1	Leq:	57	dB(A)					
						L10:	51.5	L10:	51.0	L10:	52.5	L10:	54.0	L10:	57.5	L10:	60.0	L10:	59						
						L90:	49.0	L90:	49.0	L90:	49.0	L90:	49.0	L90:	50.5	L90:	51.0	L90:	53						

(1)* A facade correction of +3 dB(A) was applied to the measured noise level.

Noise Monitoring Data

Graphical Plot of Noise Levels at NMS5

Continuous Noise Monitoring Data (NMS5)



Remarks:

(1) A facade correction of +3 dB(A) was applied to the measured noise level.