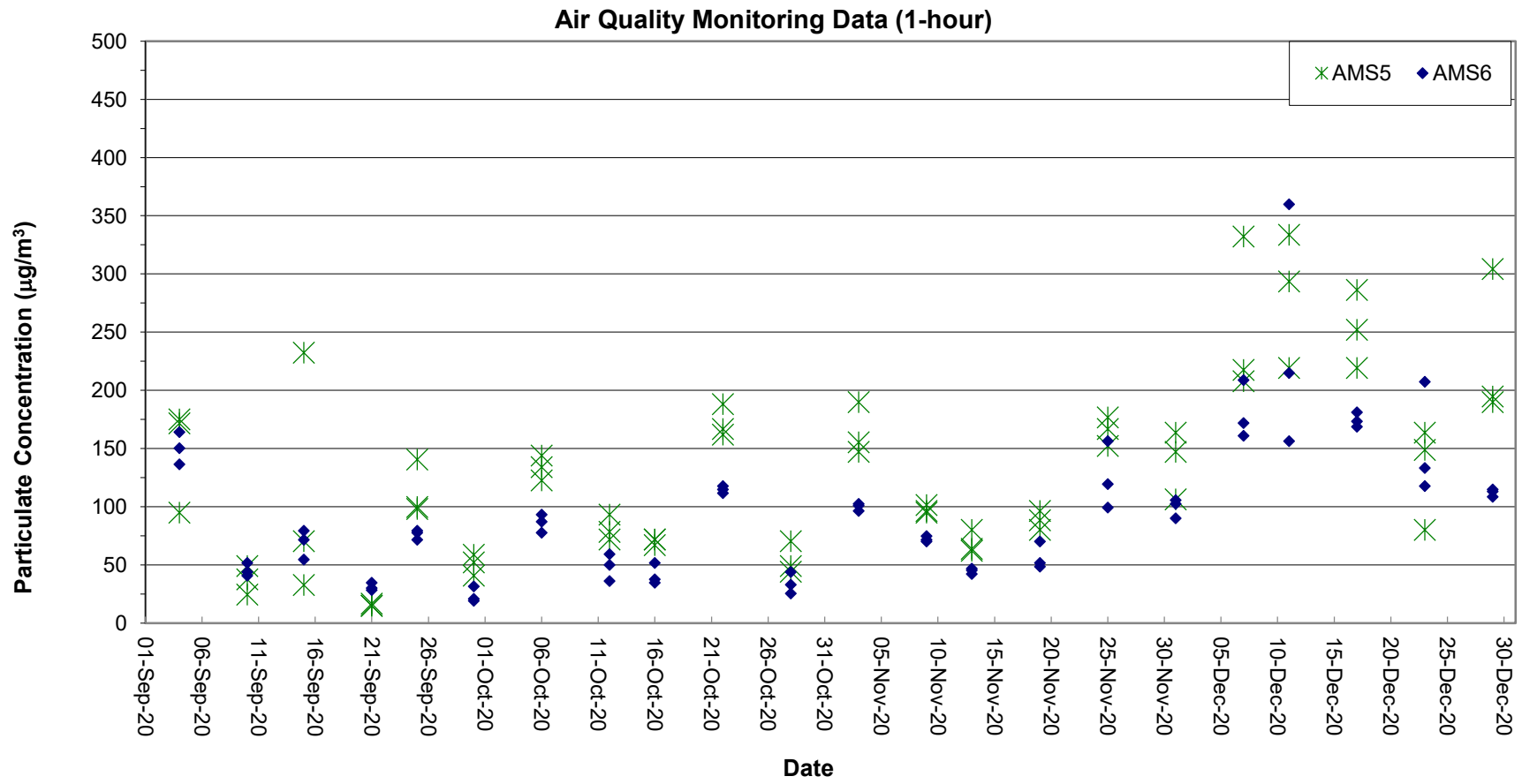


Air Quality Monitoring Data

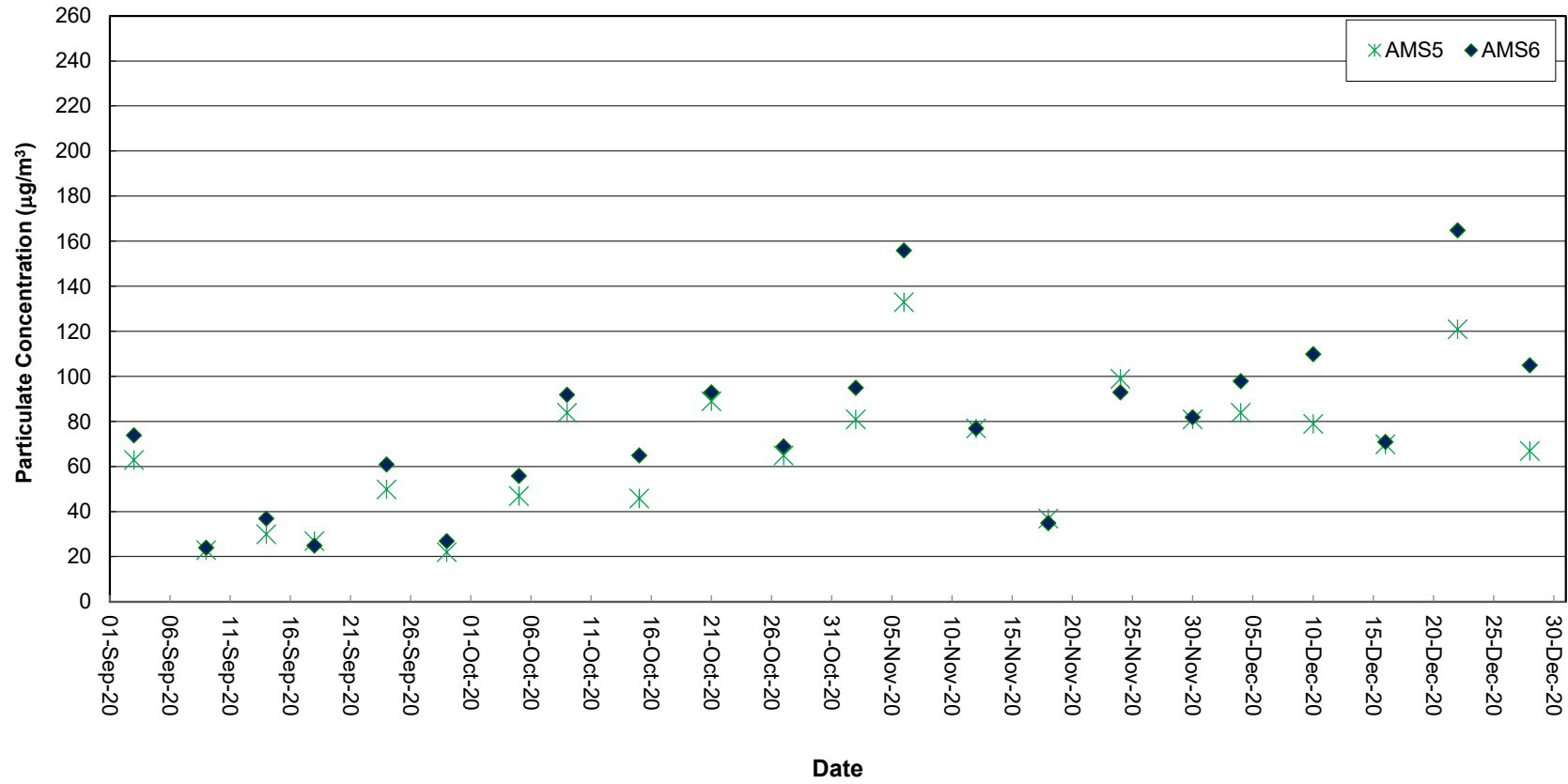
Project	Works	Date (yyyy-mm-dd)	Station	Time	Parameter	Results	Unit
HKLR	HY/2011/03	2020-12-01	AMS5	10:00	1-hr TSP	164	µg/m ³
HKLR	HY/2011/03	2020-12-01	AMS5	11:00	1-hr TSP	147	µg/m ³
HKLR	HY/2011/03	2020-12-01	AMS5	13:00	1-hr TSP	106	µg/m ³
HKLR	HY/2011/03	2020-12-07	AMS5	10:03	1-hr TSP	218	µg/m ³
HKLR	HY/2011/03	2020-12-07	AMS5	11:03	1-hr TSP	208	µg/m ³
HKLR	HY/2011/03	2020-12-07	AMS5	14:16	1-hr TSP	332	µg/m ³
HKLR	HY/2011/03	2020-12-11	AMS5	10:14	1-hr TSP	219	µg/m ³
HKLR	HY/2011/03	2020-12-11	AMS5	14:49	1-hr TSP	334	µg/m ³
HKLR	HY/2011/03	2020-12-11	AMS5	15:58	1-hr TSP	294	µg/m ³
HKLR	HY/2011/03	2020-12-17	AMS5	10:01	1-hr TSP	219	µg/m ³
HKLR	HY/2011/03	2020-12-17	AMS5	11:01	1-hr TSP	286	µg/m ³
HKLR	HY/2011/03	2020-12-17	AMS5	13:01	1-hr TSP	252	µg/m ³
HKLR	HY/2011/03	2020-12-23	AMS5	10:05	1-hr TSP	164	µg/m ³
HKLR	HY/2011/03	2020-12-23	AMS5	11:05	1-hr TSP	149	µg/m ³
HKLR	HY/2011/03	2020-12-23	AMS5	13:05	1-hr TSP	80	µg/m ³
HKLR	HY/2011/03	2020-12-29	AMS5	10:00	1-hr TSP	190	µg/m ³
HKLR	HY/2011/03	2020-12-29	AMS5	11:00	1-hr TSP	195	µg/m ³
HKLR	HY/2011/03	2020-12-29	AMS5	13:00	1-hr TSP	304	µg/m ³
HKLR	HY/2011/03	2020-12-04	AMS5	08:00	24-hr TSP	84	µg/m ³
HKLR	HY/2011/03	2020-12-10	AMS5	08:00	24-hr TSP	79	µg/m ³
HKLR	HY/2011/03	2020-12-16	AMS5	08:00	24-hr TSP	70	µg/m ³
HKLR	HY/2011/03	2020-12-22	AMS5	08:00	24-hr TSP	121	µg/m ³
HKLR	HY/2011/03	2020-12-28	AMS5	08:00	24-hr TSP	67	µg/m ³
HKLR	HY/2011/03	2020-12-01	AMS6	08:51	1-hr TSP	105	µg/m ³
HKLR	HY/2011/03	2020-12-01	AMS6	09:51	1-hr TSP	102	µg/m ³
HKLR	HY/2011/03	2020-12-01	AMS6	10:51	1-hr TSP	90	µg/m ³
HKLR	HY/2011/03	2020-12-07	AMS6	08:54	1-hr TSP	209	µg/m ³
HKLR	HY/2011/03	2020-12-07	AMS6	09:54	1-hr TSP	172	µg/m ³
HKLR	HY/2011/03	2020-12-07	AMS6	10:54	1-hr TSP	161	µg/m ³
HKLR	HY/2011/03	2020-12-11	AMS6	09:09	1-hr TSP	215	µg/m ³
HKLR	HY/2011/03	2020-12-11	AMS6	10:09	1-hr TSP	156	µg/m ³
HKLR	HY/2011/03	2020-12-11	AMS6	11:09	1-hr TSP	360	µg/m ³
HKLR	HY/2011/03	2020-12-17	AMS6	08:51	1-hr TSP	181	µg/m ³
HKLR	HY/2011/03	2020-12-17	AMS6	09:51	1-hr TSP	173	µg/m ³
HKLR	HY/2011/03	2020-12-17	AMS6	10:51	1-hr TSP	169	µg/m ³
HKLR	HY/2011/03	2020-12-23	AMS6	08:44	1-hr TSP	207	µg/m ³
HKLR	HY/2011/03	2020-12-23	AMS6	09:44	1-hr TSP	133	µg/m ³
HKLR	HY/2011/03	2020-12-23	AMS6	10:44	1-hr TSP	118	µg/m ³
HKLR	HY/2011/03	2020-12-29	AMS6	08:58	1-hr TSP	113	µg/m ³
HKLR	HY/2011/03	2020-12-29	AMS6	09:58	1-hr TSP	115	µg/m ³
HKLR	HY/2011/03	2020-12-29	AMS6	10:58	1-hr TSP	109	µg/m ³
HKLR	HY/2011/03	2020-12-04	AMS6	08:00	24-hr TSP	98	µg/m ³
HKLR	HY/2011/03	2020-12-10	AMS6	08:00	24-hr TSP	110	µg/m ³
HKLR	HY/2011/03	2020-12-16	AMS6	08:00	24-hr TSP	71	µg/m ³
HKLR	HY/2011/03	2020-12-22	AMS6	08:00	24-hr TSP	165	µg/m ³
HKLR	HY/2011/03	2020-12-28	AMS6	08:00	24-hr TSP	105	µg/m ³

Graphical Plot of 1-hour TSP at AMS5 and AMS6



Graphical Plot of 24-hour TSP at AMS5 and AMS6

Air Quality Monitoring Data (24-hour)



Noise Monitoring Data

Project	Works	Date (yyyy-mm-dd)	Station	Start Time	Wind Speed, m/s	1st set 5mins		2nd set 5mins		3rd set 5mins		4th set 5mins		5th set 5mins		6th set 5mins		Overall (30mins)*	Unit	
						Leq:	L10:	L90:	Leq:	L10:	L90:	Leq:	L10:	L90:	Leq:	L10:	L90:			Leq:
HKLR	HY/2011/03	2020-12-01	NMS5	10:04	<5	Leq:	52.0	Leq:	53.3	Leq:	51.6	Leq:	51.9	Leq:	52.8	Leq:	51.4	Leq:	55	dB(A)
						L10:	53.5	L10:	55.5	L10:	53.5	L10:	53.5	L10:	54.5	L10:	52.5	L10:	57	
						L90:	50.0	L90:	50.0	L90:	49.5	L90:	50.0	L90:	50.0	L90:	49.5	L90:	53	
HKLR	HY/2011/03	2020-12-07	NMS5	09:57	<5	Leq:	53.3	Leq:	53.1	Leq:	52.0	Leq:	51.8	Leq:	51.8	Leq:	53.0	Leq:	56	dB(A)
						L10:	55.5	L10:	55.5	L10:	54.0	L10:	53.5	L10:	54.5	L10:	52.5	L10:	57	
						L90:	49.5	L90:	49.5	L90:	49.5	L90:	49.5	L90:	49.0	L90:	49.5	L90:	52	
HKLR	HY/2011/03	2020-12-17	NMS5	10:06	<5	Leq:	57.2	Leq:	59.2	Leq:	57.0	Leq:	54.7	Leq:	56.5	Leq:	55.1	Leq:	60	dB(A)
						L10:	60.5	L10:	62.5	L10:	59.5	L10:	56.5	L10:	59.5	L10:	56.5	L10:	63	
						L90:	51.0	L90:	52.0	L90:	51.5	L90:	49.5	L90:	50.5	L90:	50.0	L90:	54	
HKLR	HY/2011/03	2020-12-23	NMS5	10:44	<5	Leq:	57.6	Leq:	61.5	Leq:	61.1	Leq:	60.2	Leq:	58.6	Leq:	59.6	Leq:	63	dB(A)
						L10:	59.0	L10:	64.5	L10:	64.5	L10:	62.5	L10:	61.0	L10:	63.0	L10:	66	
						L90:	55.5	L90:	58.0	L90:	58.0	L90:	57.5	L90:	55.0	L90:	55.0	L90:	60	
HKLR	HY/2011/03	2020-12-29	NMS5	10:01	<5	Leq:	52.1	Leq:	52.5	Leq:	52.9	Leq:	56.0	Leq:	54.1	Leq:	54.7	Leq:	57	dB(A)
						L10:	52.5	L10:	54.0	L10:	54.5	L10:	59.0	L10:	55.5	L10:	55.5	L10:	59	
						L90:	49.5	L90:	50.5	L90:	51.0	L90:	50.5	L90:	50.5	L90:	51.0	L90:	54	

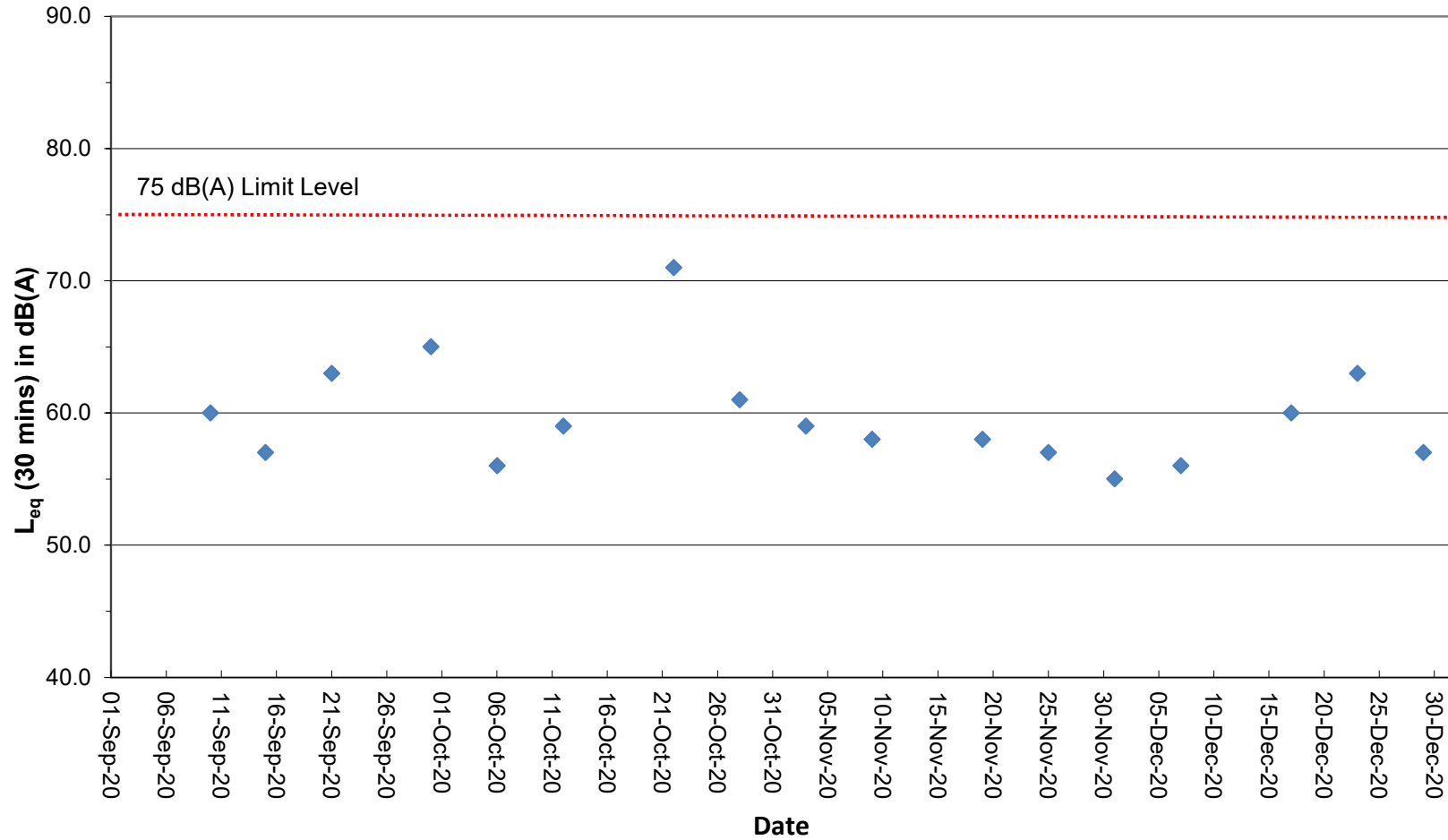
Remarks:

(1)* A facade correction of +3 dB(A) was applied to the measured noise level.

Noise Monitoring Data

Graphical Plot of Noise Levels at NMS5

Continuous Noise Monitoring Data (NMS5)



Remark:

(1) A facade correction of +3 dB(A) was applied to the measured noise level.