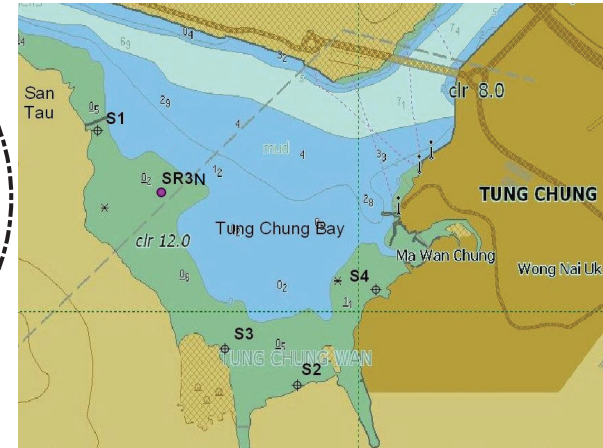


	EASTING	NORTHING
S1	810291.160	816678.727
S2	810958.272	815831.531
S3	810716.585	815953.308
S4	811221.433	816151.381
SR3N	816591	810689



LEGEND:

- WORKS BOUNDARY
- SR3N WATER QUALITY MONITORING STATION
- SAMPLING ZONE
- MEASUREMENT POINT SEDIMENTATION RATE

Rev	Description	By	Date

Supervising Officer
ARUP 奧雅納工程顧問
 Ove Arup & Partners Hong Kong Limited

Contractor
 中國建築工程(香港)有限公司
 CHINA STATE CONSTRUCTION ENGINEERING (HONG KONG) LTD.

Contractor's Designer
ATKINS 阿特金斯

Contract No. and Titles
 Contract No. HY/2011/03
 Hong Kong-Zhuhai-Macao Bridge
 Hong Kong Link Road -
 Section Between Scenic Hill and
 Hong Kong Boundary Crossing Facilities

Drawing title
MUDFLAT SURVEY AREAS

Drawing no.	FIGURE 6.1	Rev.	-
Drawn	ACL	Date	26 SEP 2012
Checked		Approved	
Scale	1 : 7500	Status	

COPYRIGHT RESERVED
 路政署 HIGHWAYS DEPARTMENT
 港珠澳大橋香港工程管理局
 Hong Kong - Zhuhai - Macao Bridge
 Hong Kong Project Management Office

