

Figure 1. Transect Line Layout in Northwest and Northeast Lantau Survey Areas

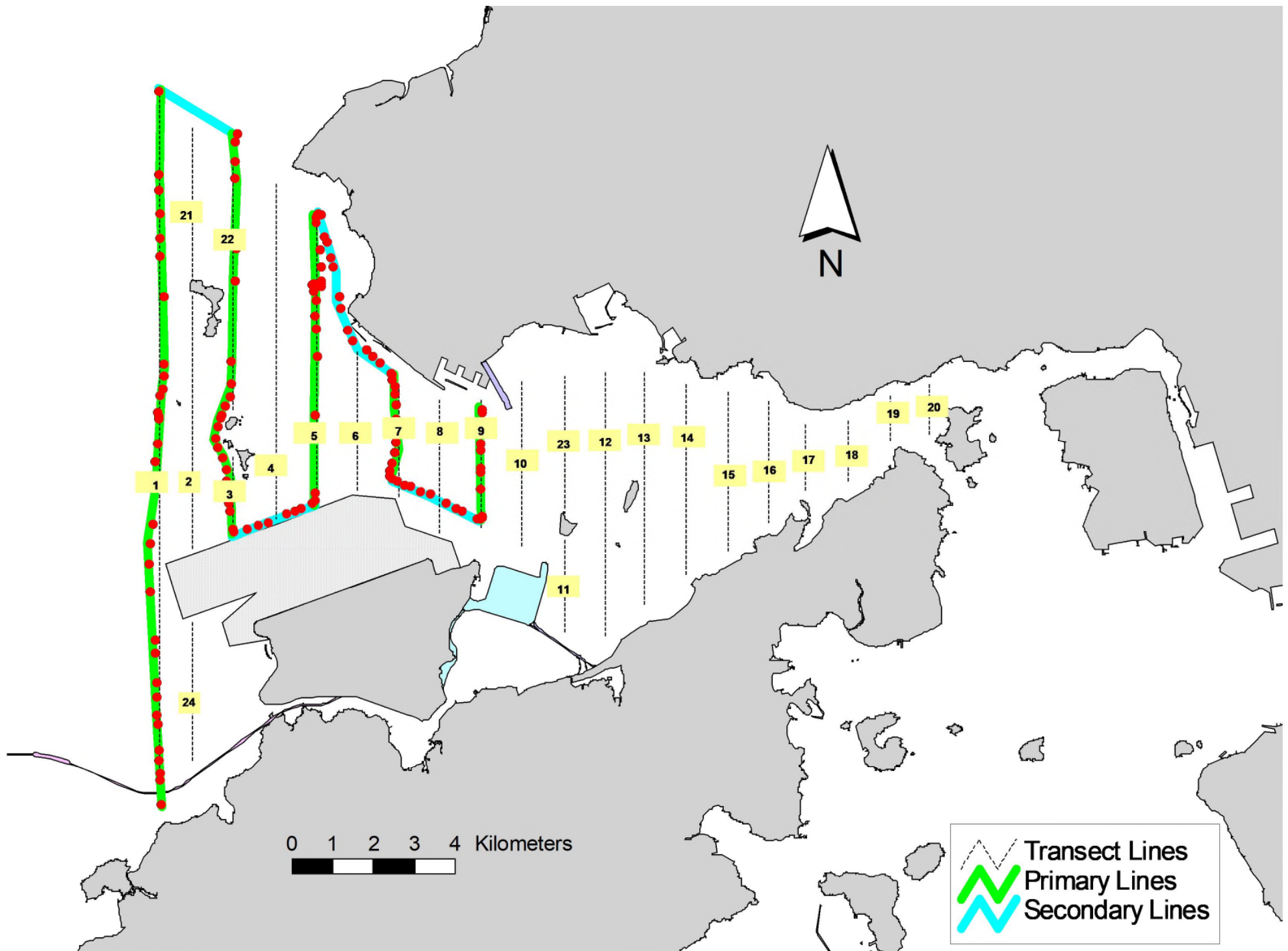


Figure 2. Survey Route on September 2nd, 2022

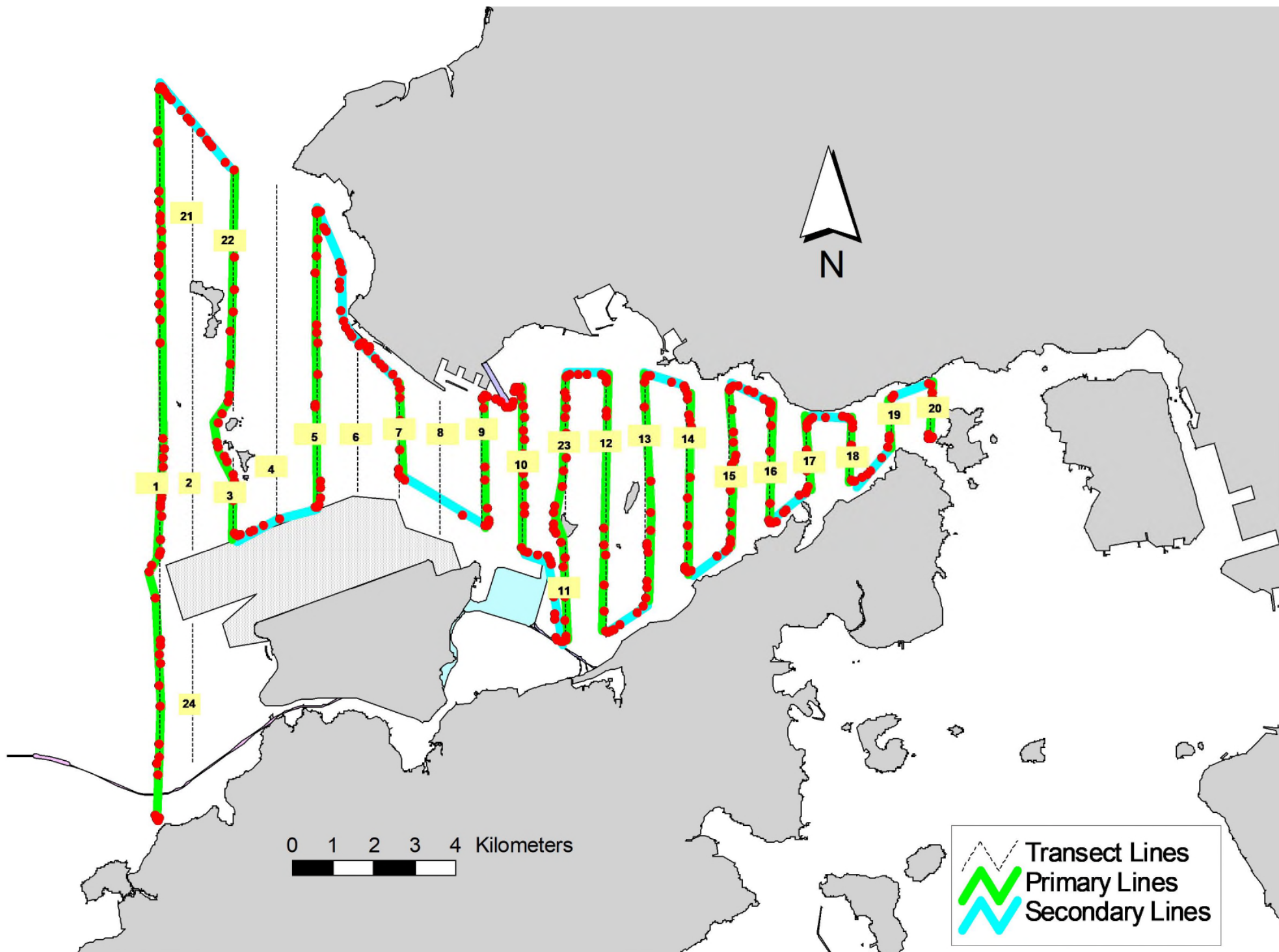


Figure 4. Survey Route on September 9th, 2022

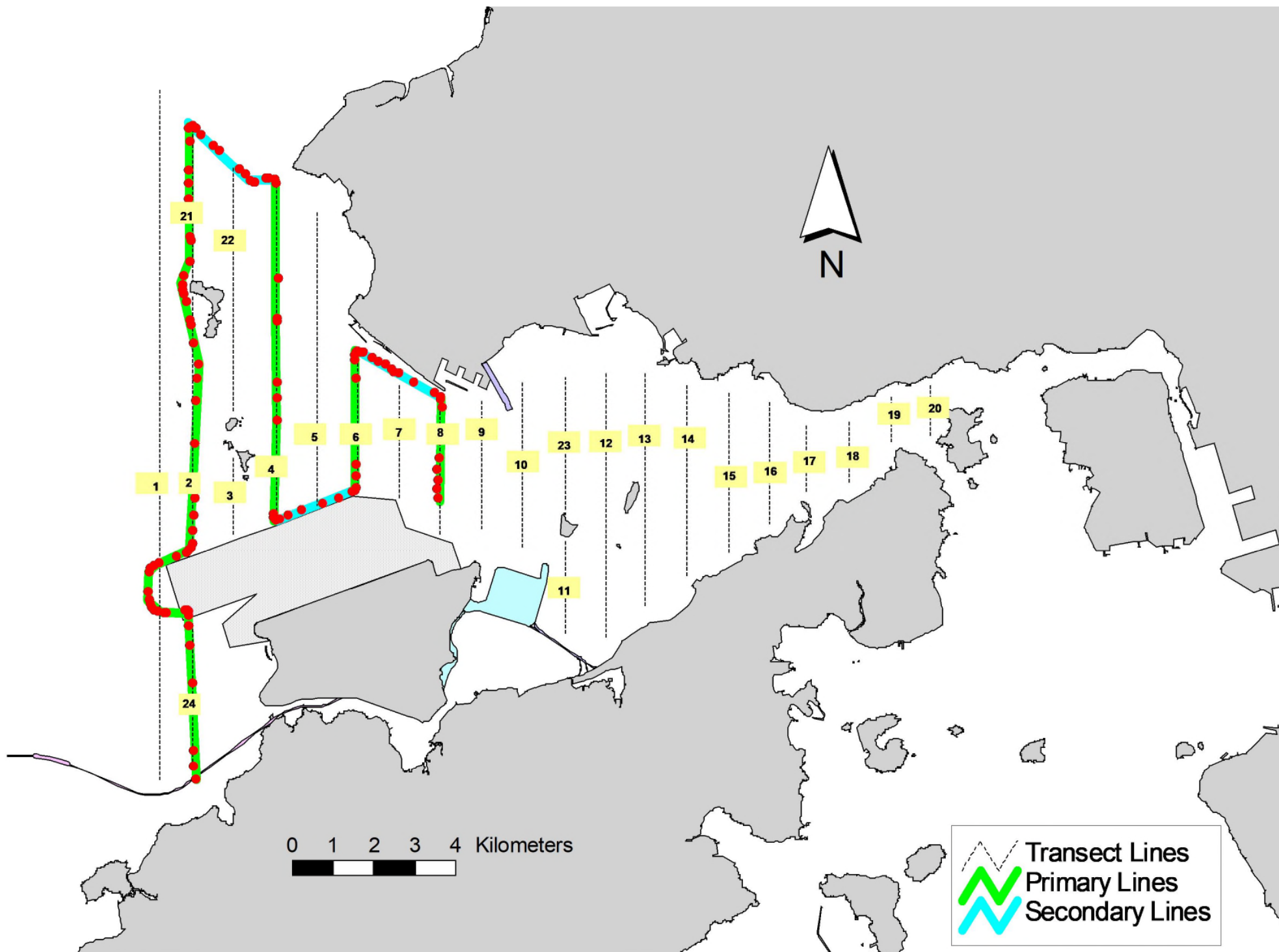


Figure 5. Survey Route on September 22nd, 2022

Annex I. HKLR03 Survey Effort Database (September 2022)

(Abbreviations: BEAU = Beaufort Sea State; P = Primary Line Effort; S = Secondary Line Effort)

DATE	AREA	BEAU	EFFORT	SEASON	VESSEL	TYPE	P/S
2-Sep-22	NW LANTAU	2	1.47	AUTUMN	STANDARD138716	HKLR	P
2-Sep-22	NW LANTAU	3	30.60	AUTUMN	STANDARD138716	HKLR	P
2-Sep-22	NW LANTAU	4	3.85	AUTUMN	STANDARD138716	HKLR	P
2-Sep-22	NW LANTAU	3	10.88	AUTUMN	STANDARD138716	HKLR	S
5-Sep-22	NW LANTAU	2	6.80	AUTUMN	STANDARD138716	HKLR	P
5-Sep-22	NW LANTAU	3	19.22	AUTUMN	STANDARD138716	HKLR	P
5-Sep-22	NW LANTAU	3	10.88	AUTUMN	STANDARD138716	HKLR	S
5-Sep-22	NE LANTAU	2	7.55	AUTUMN	STANDARD138716	HKLR	P
5-Sep-22	NE LANTAU	3	29.12	AUTUMN	STANDARD138716	HKLR	P
5-Sep-22	NE LANTAU	2	2.13	AUTUMN	STANDARD138716	HKLR	S
5-Sep-22	NE LANTAU	3	11.30	AUTUMN	STANDARD138716	HKLR	S
9-Sep-22	NW LANTAU	2	24.72	AUTUMN	STANDARD138716	HKLR	P
9-Sep-22	NW LANTAU	3	11.18	AUTUMN	STANDARD138716	HKLR	P
9-Sep-22	NW LANTAU	2	12.20	AUTUMN	STANDARD138716	HKLR	S
9-Sep-22	NW LANTAU	3	2.40	AUTUMN	STANDARD138716	HKLR	S
9-Sep-22	NE LANTAU	2	29.93	AUTUMN	STANDARD138716	HKLR	P
9-Sep-22	NE LANTAU	3	6.60	AUTUMN	STANDARD138716	HKLR	P
9-Sep-22	NE LANTAU	2	13.87	AUTUMN	STANDARD138716	HKLR	S
22-Sep-22	NW LANTAU	2	8.68	AUTUMN	STANDARD138716	HKLR	P
22-Sep-22	NW LANTAU	3	15.41	AUTUMN	STANDARD138716	HKLR	P
22-Sep-22	NW LANTAU	2	7.08	AUTUMN	STANDARD138716	HKLR	S
22-Sep-22	NW LANTAU	3	6.03	AUTUMN	STANDARD138716	HKLR	S