

Figure 1. Transect Line Layout in Northwest and Northeast Lantau Survey Areas

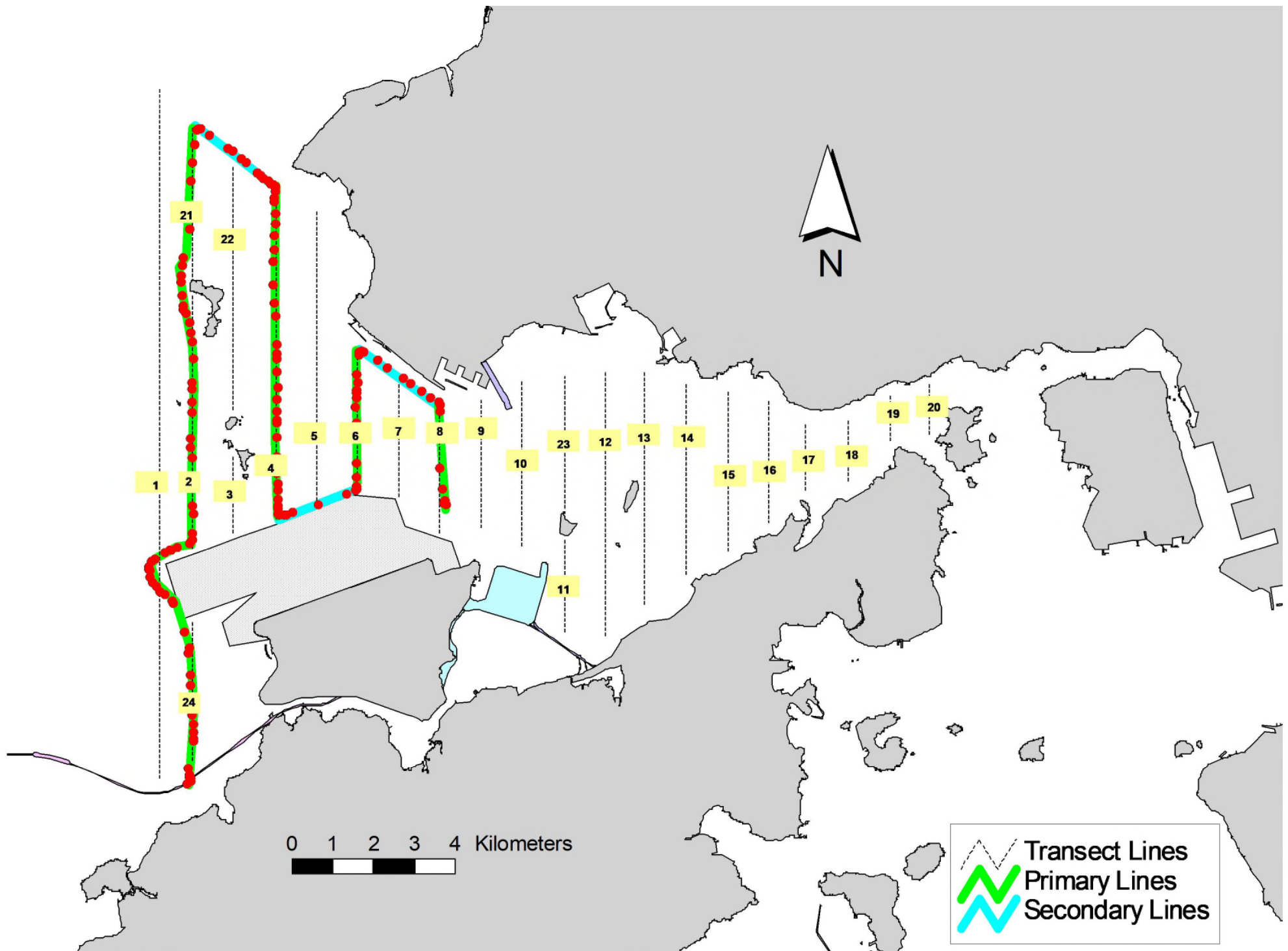


Figure 2. Survey Route on January 3<sup>rd</sup>, 2023

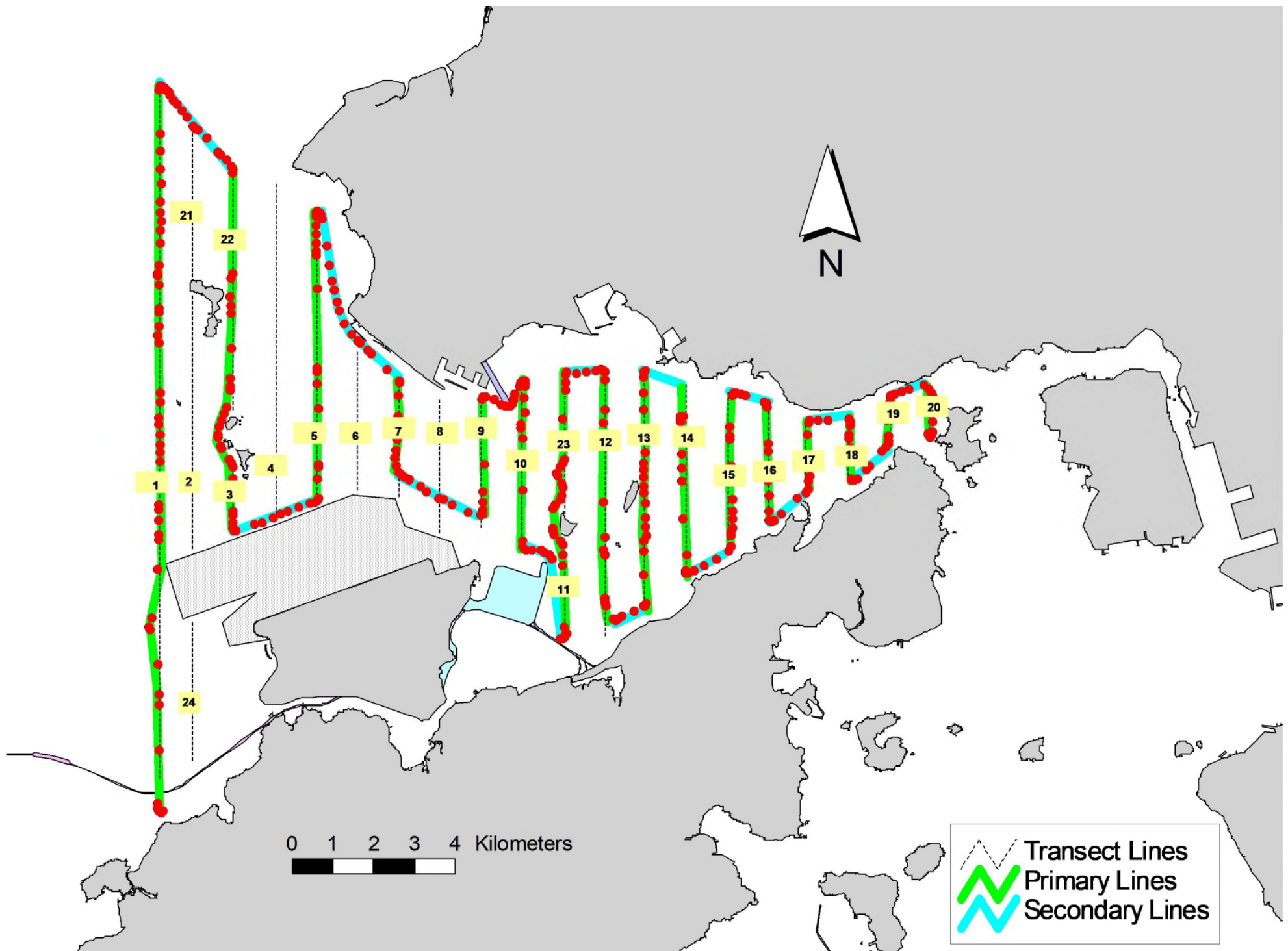


Figure 3. Survey Route on January 11<sup>th</sup>, 2023

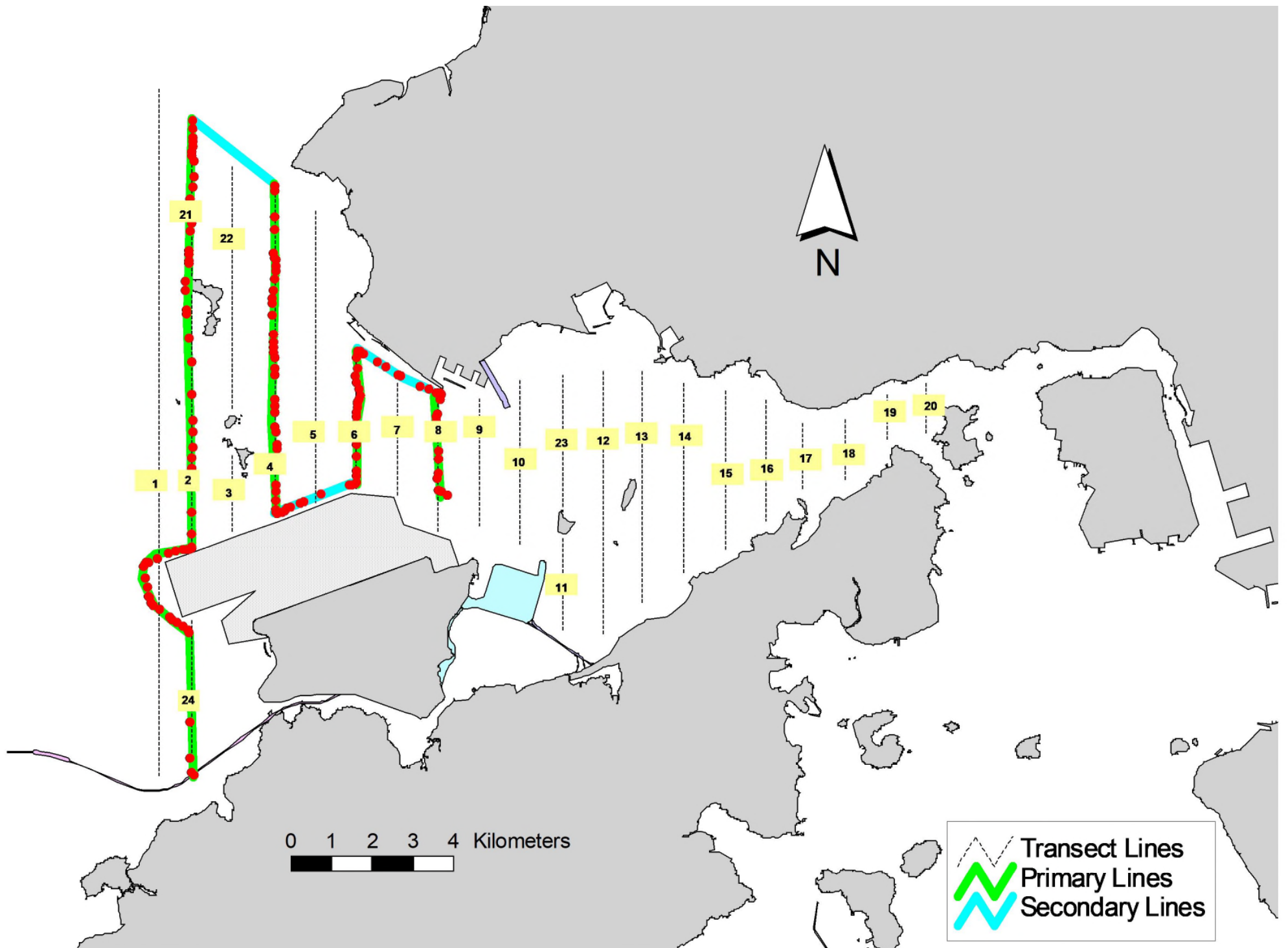


Figure 4. Survey Route on January 12<sup>th</sup>, 2023

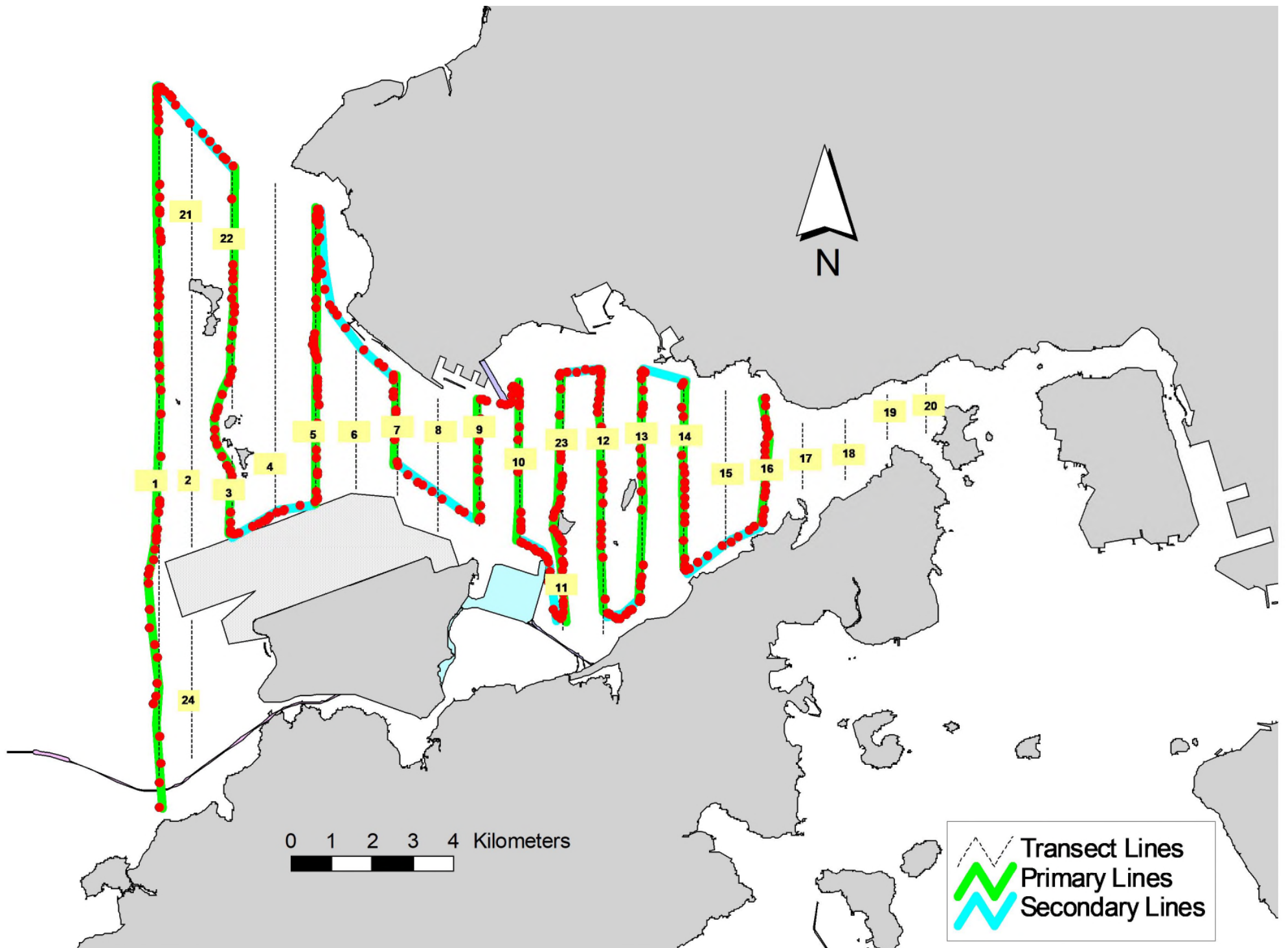


Figure 5. Survey Route on January 16<sup>th</sup>, 2023

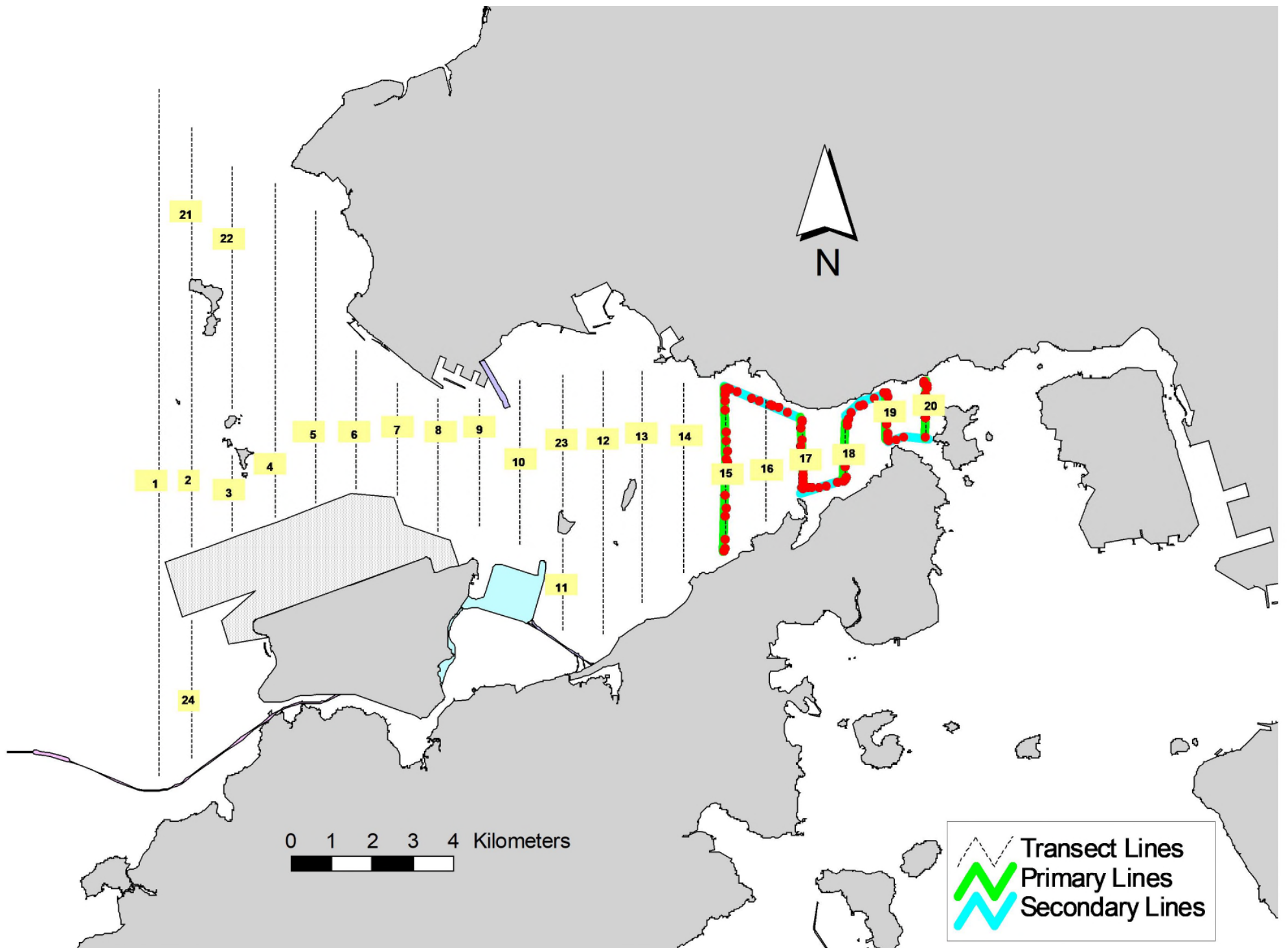


Figure 5. Survey Route on January 17<sup>th</sup>, 2023

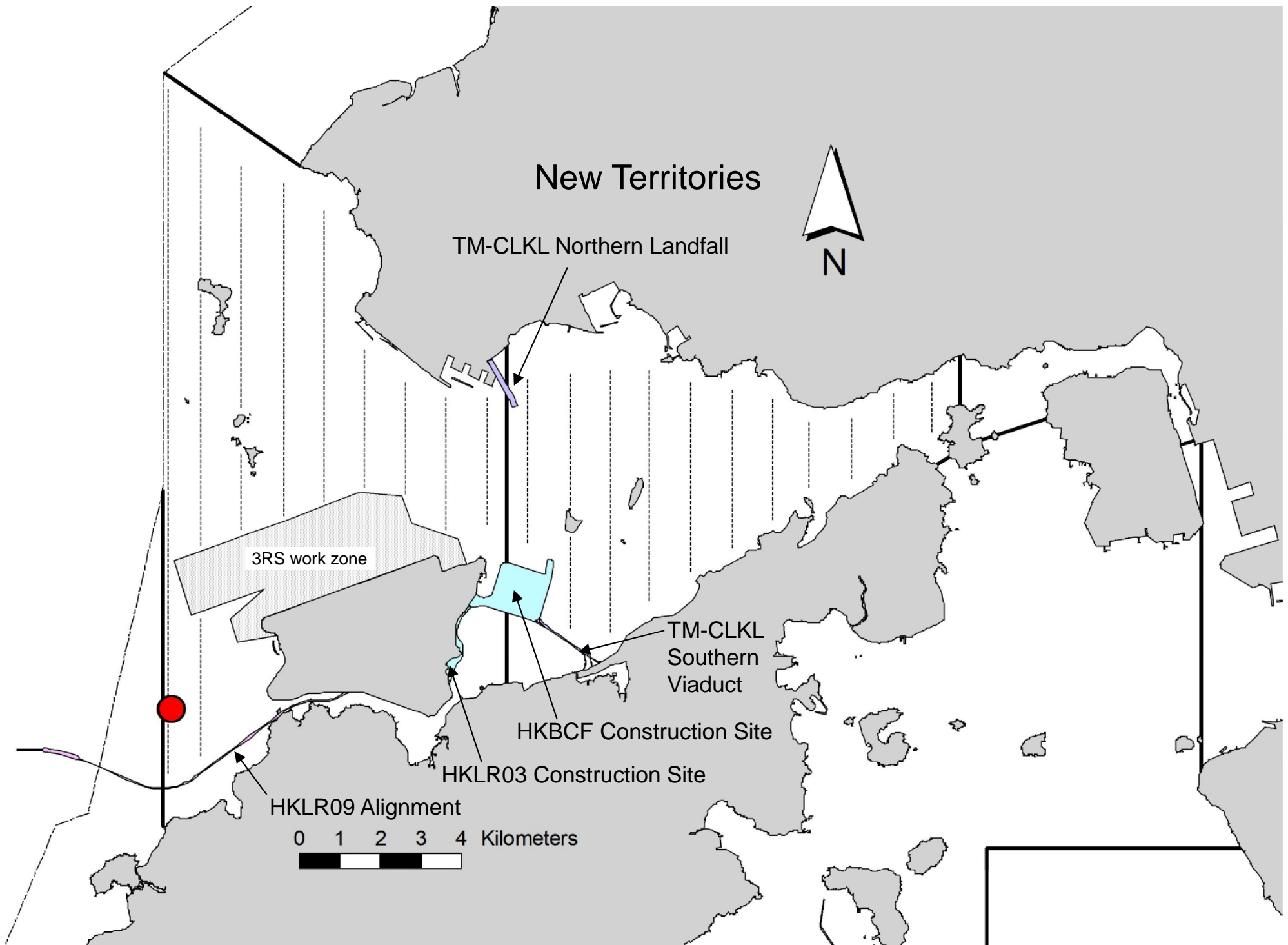


Figure 6. Distribution of Chinese White Dolphin Sightings during January 2023 HKLR03 Monitoring Surveys

## Annex I. HKLR03 Survey Effort Database (January 2023)

(Abbreviations: BEAU = Beaufort Sea State; P = Primary Line Effort; S = Secondary Line Effort)

DATE	AREA	BEAU	EFFORT	SEASON	VESSEL	TYPE	P/S
3-Jan-23	NW LANTAU	2	3.17	WINTER	STANDARD36826	HKLR	P
3-Jan-23	NW LANTAU	3	21.54	WINTER	STANDARD36826	HKLR	P
3-Jan-23	NW LANTAU	2	4.70	WINTER	STANDARD36826	HKLR	S
3-Jan-23	NW LANTAU	3	6.79	WINTER	STANDARD36826	HKLR	S
11-Jan-23	NW LANTAU	1	2.40	WINTER	STANDARD138716	HKLR	P
11-Jan-23	NW LANTAU	2	25.88	WINTER	STANDARD138716	HKLR	P
11-Jan-23	NW LANTAU	3	7.02	WINTER	STANDARD138716	HKLR	P
11-Jan-23	NW LANTAU	2	11.50	WINTER	STANDARD138716	HKLR	S
11-Jan-23	NW LANTAU	3	2.20	WINTER	STANDARD138716	HKLR	S
11-Jan-23	NE LANTAU	2	35.59	WINTER	STANDARD138716	HKLR	P
11-Jan-23	NE LANTAU	1	1.00	WINTER	STANDARD138716	HKLR	S
11-Jan-23	NE LANTAU	2	11.51	WINTER	STANDARD138716	HKLR	S
12-Jan-23	NW LANTAU	2	4.19	WINTER	STANDARD36826	HKLR	P
12-Jan-23	NW LANTAU	3	21.61	WINTER	STANDARD36826	HKLR	P
12-Jan-23	NW LANTAU	3	7.70	WINTER	STANDARD36826	HKLR	S
16-Jan-23	NW LANTAU	2	11.50	WINTER	STANDARD36826	HKLR	P
16-Jan-23	NW LANTAU	3	21.56	WINTER	STANDARD36826	HKLR	P
16-Jan-23	NW LANTAU	2	9.20	WINTER	STANDARD36826	HKLR	S
16-Jan-23	NW LANTAU	3	6.86	WINTER	STANDARD36826	HKLR	S
16-Jan-23	NE LANTAU	2	23.20	WINTER	STANDARD36826	HKLR	P
16-Jan-23	NE LANTAU	3	3.90	WINTER	STANDARD36826	HKLR	P
16-Jan-23	NE LANTAU	2	9.50	WINTER	STANDARD36826	HKLR	S
16-Jan-23	NE LANTAU	3	2.50	WINTER	STANDARD36826	HKLR	S
17-Jan-23	NE LANTAU	2	7.74	WINTER	STANDARD36826	HKLR	P
17-Jan-23	NE LANTAU	3	1.61	WINTER	STANDARD36826	HKLR	P
17-Jan-23	NE LANTAU	2	5.15	WINTER	STANDARD36826	HKLR	S



**Annex II. HKLR03 Chinese White Dolphin Sighting Database (January 2023)**

(Abberviations: STG# = Sighting Number; HRD SZ = Dolphin Herd Size; BEAU = Beaufort Sea State; PSD = Perpendicular Distance; BOAT ASSOC. = Fishing Boat Association; P/S: Sighting Made on Primary/Secondary Lines)

DATE	STG #	TIME	HRD SZ	AREA	BEAU	PSD	EFFORT	TYPE	NORTHING	EASTING	SEASON	BOAT ASSOC.	P/S
16-Jan-23	1	1032	7	NW LANTAU	3	14	ON	HKLR	817020	804726	WINTER	NONE	P

**Annex III. Individual dolphins identified during HKLR03 monitoring surveys in January 2023**

<b>ID#</b>	<b>DATE</b>	<b>STG#</b>	<b>AREA</b>
NL33	16/01/23	1	NW LANTAU
NL261	16/01/23	1	NW LANTAU
WL294	16/01/23	1	NW LANTAU
WL295	16/01/23	1	NW LANTAU
WL315	16/01/23	1	NW LANTAU
WL319	16/01/23	1	NW LANTAU



Annex IV. Photograph of Identified Individual Dolphin in January 2023 (HKLR03)