

Figure 1. Transect Line Layout in Northwest and Northeast Lantau Survey Areas

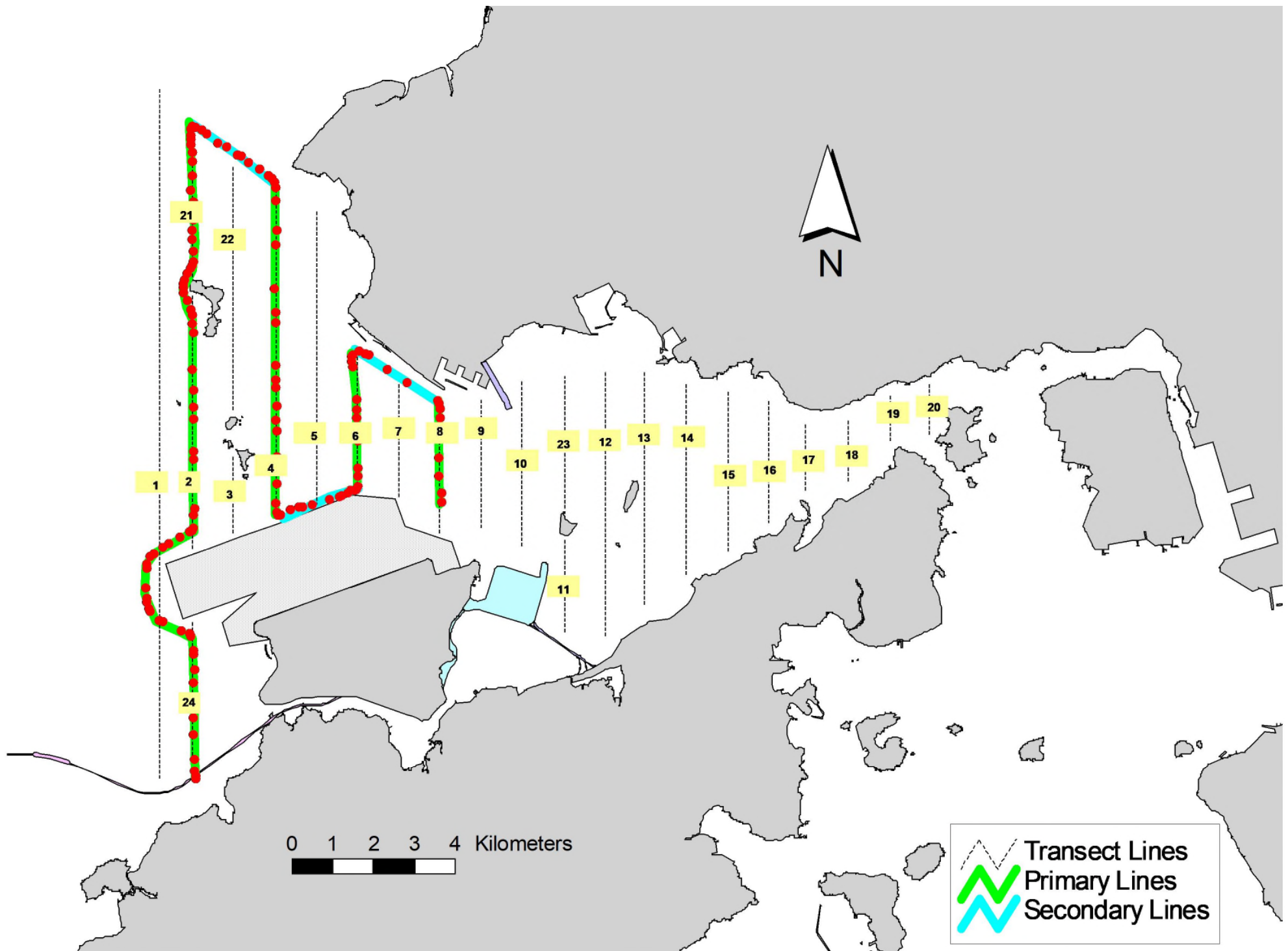


Figure 3. Survey Route on February 8th, 2023

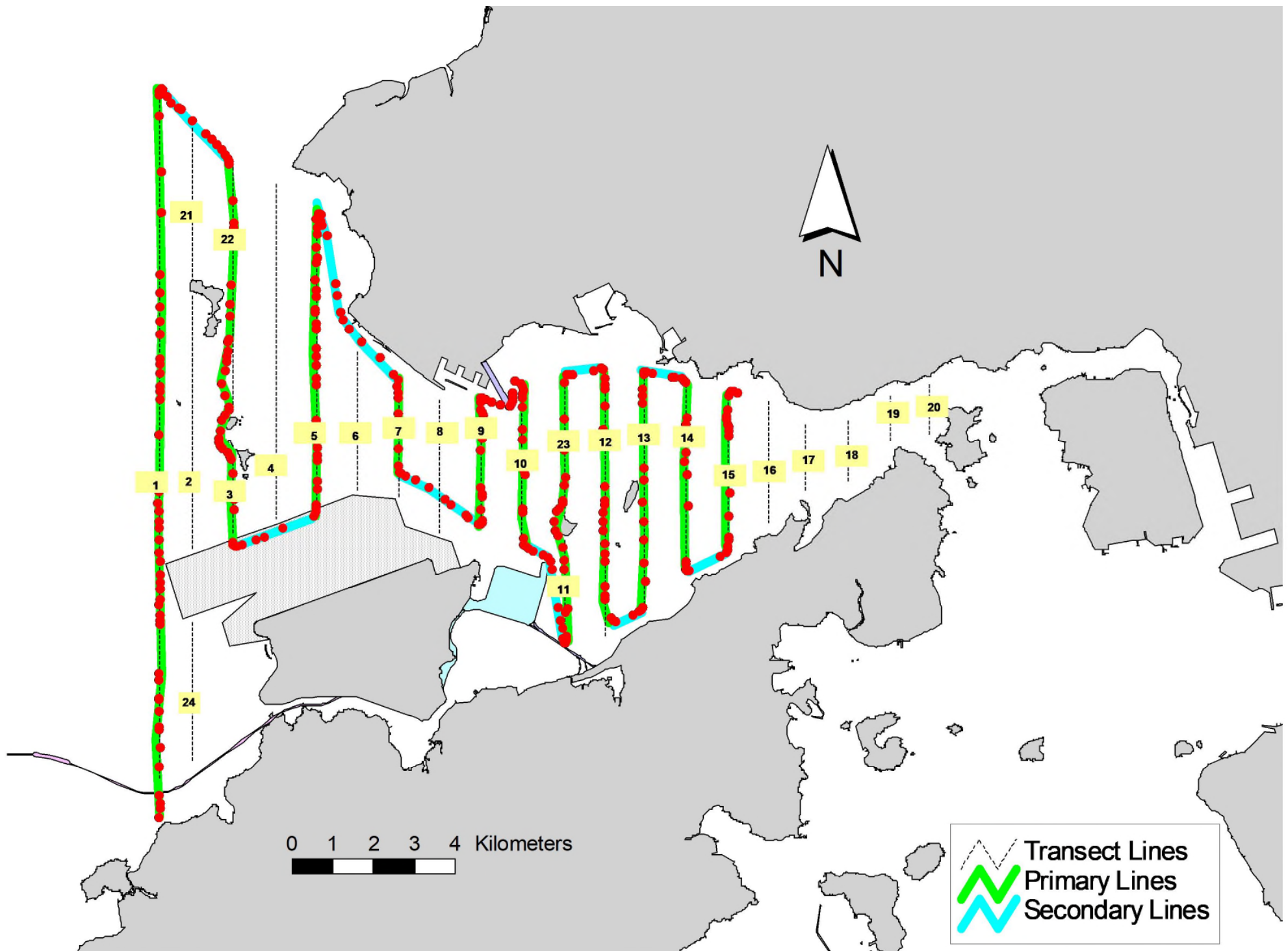


Figure 4. Survey Route on February 14th, 2023

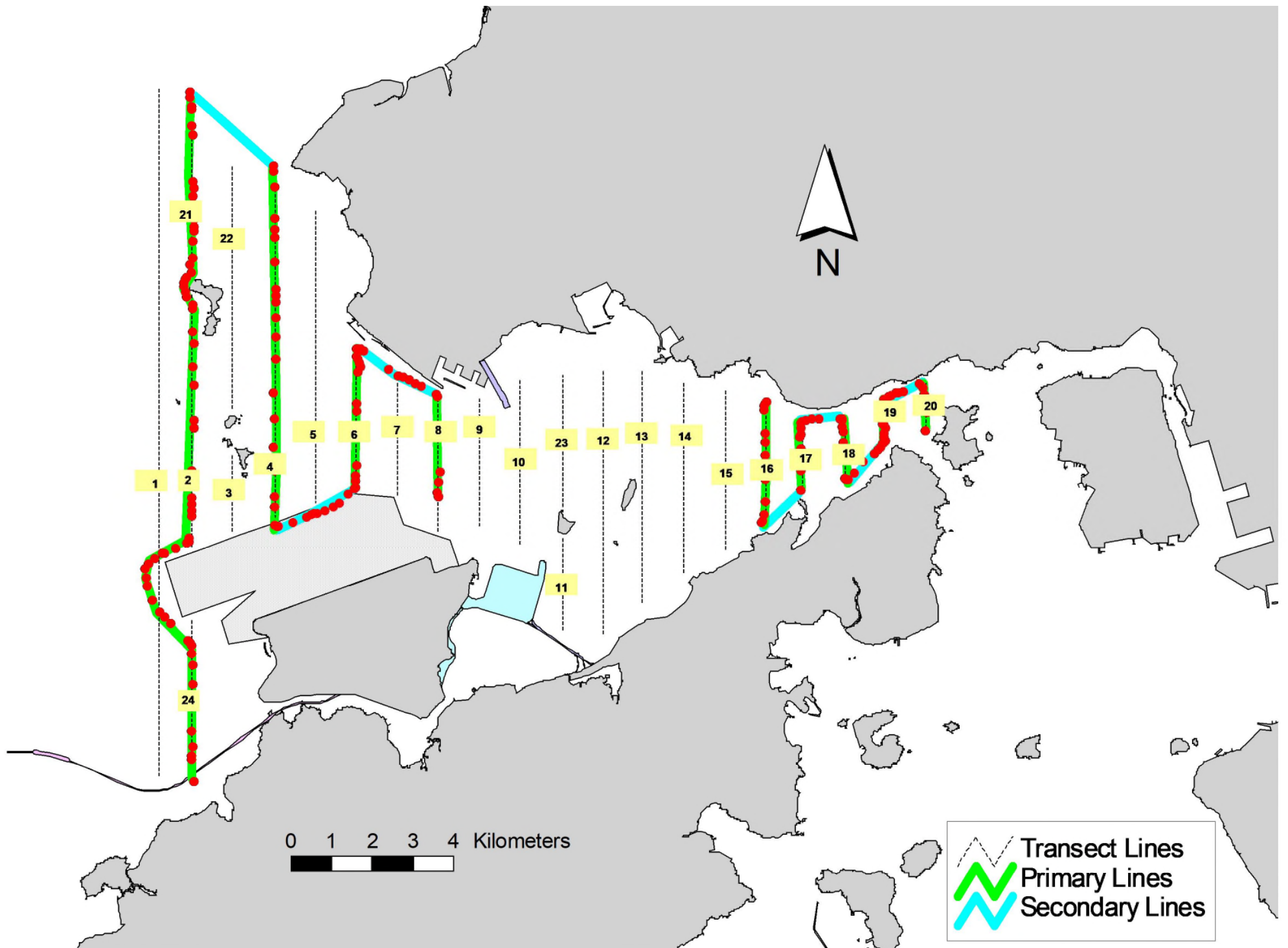


Figure 5. Survey Route on February 16th, 2023

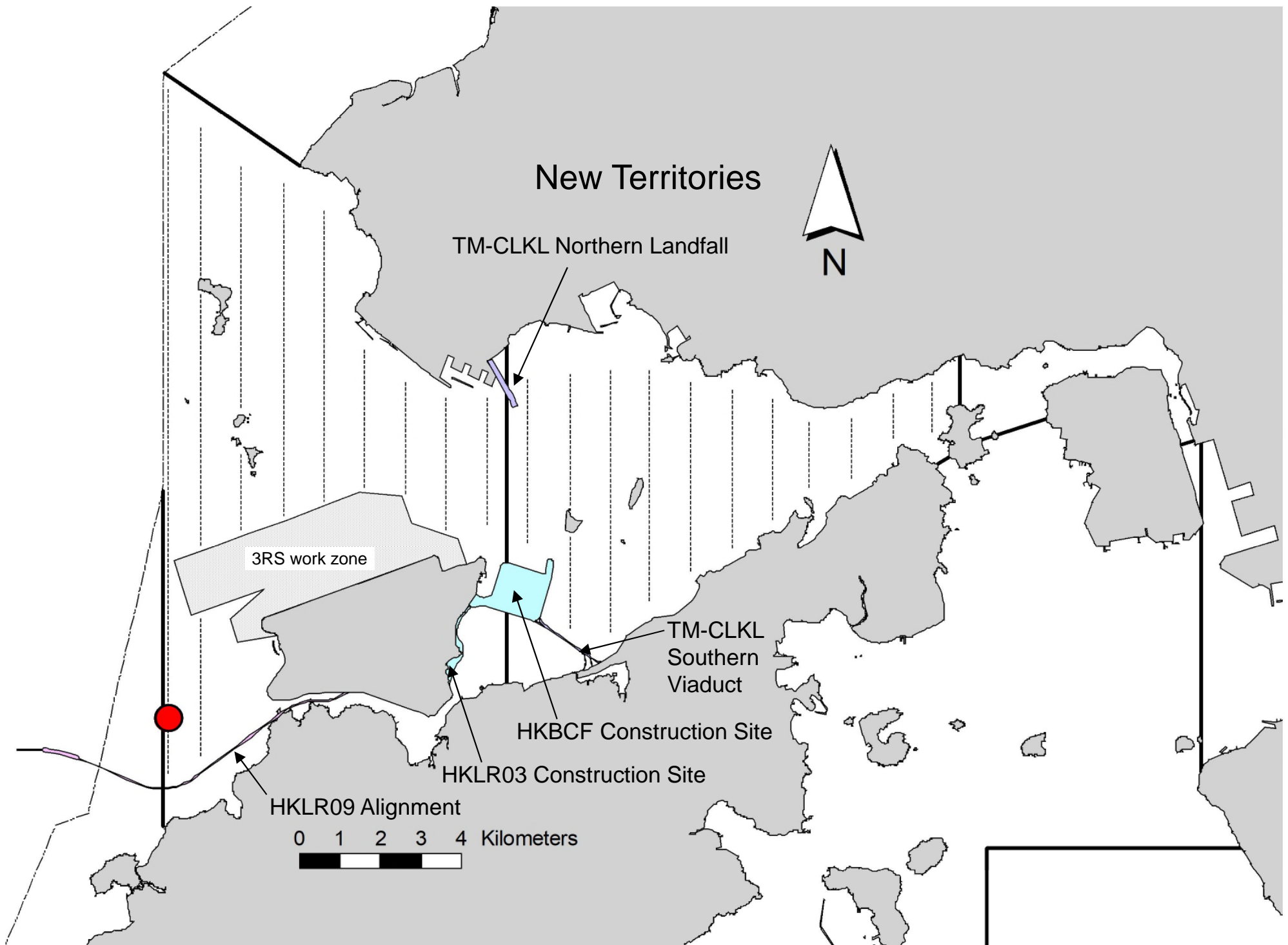


Figure 6. Distribution of Chinese White Dolphin Sightings during February 2023 HKLR03 Monitoring Surveys

Annex I. HKLR03 Survey Effort Database (February 2023)

(Abbreviations: BEAU = Beaufort Sea State; P = Primary Line Effort; S = Secondary Line Effort)

DATE	AREA	BEAU	EFFORT	SEASON	VESSEL	TYPE	P/S
3-Feb-23	NW LANTAU	1	6.09	WINTER	STANDARD138716	HKLR	P
3-Feb-23	NW LANTAU	2	25.49	WINTER	STANDARD138716	HKLR	P
3-Feb-23	NW LANTAU	3	1.20	WINTER	STANDARD138716	HKLR	P
3-Feb-23	NW LANTAU	2	11.52	WINTER	STANDARD138716	HKLR	S
3-Feb-23	NW LANTAU	3	4.80	WINTER	STANDARD138716	HKLR	S
3-Feb-23	NE LANTAU	2	32.49	WINTER	STANDARD138716	HKLR	P
3-Feb-23	NE LANTAU	3	3.30	WINTER	STANDARD138716	HKLR	P
3-Feb-23	NE LANTAU	2	9.91	WINTER	STANDARD138716	HKLR	S
3-Feb-23	NE LANTAU	3	2.40	WINTER	STANDARD138716	HKLR	S
8-Feb-23	NW LANTAU	2	10.13	WINTER	STANDARD140232	HKLR	P
8-Feb-23	NW LANTAU	3	15.11	WINTER	STANDARD140232	HKLR	P
8-Feb-23	NW LANTAU	2	7.66	WINTER	STANDARD140232	HKLR	S
8-Feb-23	NW LANTAU	3	3.70	WINTER	STANDARD140232	HKLR	S
14-Feb-23	NW LANTAU	2	7.25	WINTER	STANDARD36826	HKLR	P
14-Feb-23	NW LANTAU	3	29.93	WINTER	STANDARD36826	HKLR	P
14-Feb-23	NW LANTAU	2	6.85	WINTER	STANDARD36826	HKLR	S
14-Feb-23	NW LANTAU	3	6.20	WINTER	STANDARD36826	HKLR	S
14-Feb-23	NE LANTAU	2	24.88	WINTER	STANDARD36826	HKLR	P
14-Feb-23	NE LANTAU	3	4.00	WINTER	STANDARD36826	HKLR	P
14-Feb-23	NE LANTAU	2	6.42	WINTER	STANDARD36826	HKLR	S
14-Feb-23	NE LANTAU	3	1.10	WINTER	STANDARD36826	HKLR	S
16-Feb-23	NW LANTAU	2	11.37	WINTER	STANDARD36826	HKLR	P
16-Feb-23	NW LANTAU	3	15.02	WINTER	STANDARD36826	HKLR	P
16-Feb-23	NW LANTAU	2	1.20	WINTER	STANDARD36826	HKLR	S
16-Feb-23	NW LANTAU	3	7.51	WINTER	STANDARD36826	HKLR	S
16-Feb-23	NE LANTAU	2	7.99	WINTER	STANDARD36826	HKLR	P
16-Feb-23	NE LANTAU	2	3.24	WINTER	STANDARD36826	HKLR	S

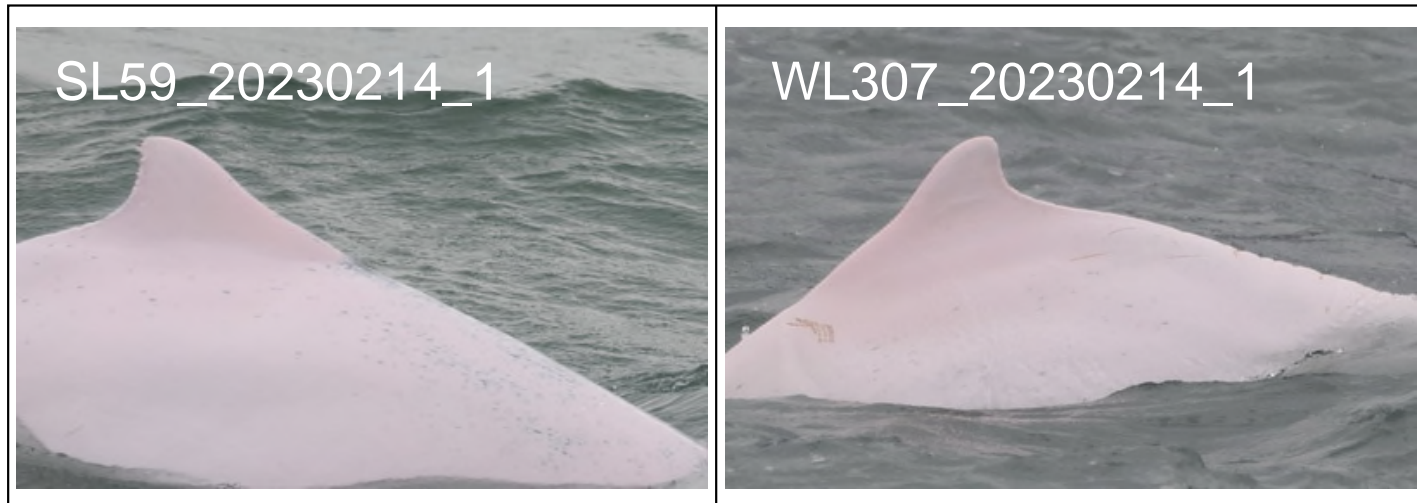
Annex II. HKLR03 Chinese White Dolphin Sighting Database (February 2023)

(Abberviations: STG# = Sighting Number; HRD SZ = Dolphin Herd Size; BEAU = Beaufort Sea State; PSD = Perpendicular Distance; BOAT ASSOC. = Fishing Boat Association; P/S: Sighting Made on Primary/Secondary Lines)

DATE	STG #	TIME	HRD SZ	AREA	BEAU	PSD	EFFORT	TYPE	NORTHING	EASTING	SEASON	BOAT ASSOC.	P/S
14-Feb-23	1	1020	4	NW LANTAU	3	78	ON	HKLR	816787	804664	WINTER	NONE	P

Annex III. Individual dolphins identified during HKLR03 monitoring surveys in February 2023

ID#	DATE	STG#	AREA
SL59	14/02/23	1	NW LANTAU
WL307	14/02/23	1	NW LANTAU



Annex IV. Photograph of Identified Individual Dolphins in February 2023 (HKLR03)