

Figure 1. Transect Line Layout in Northwest and Northeast Lantau Survey Areas

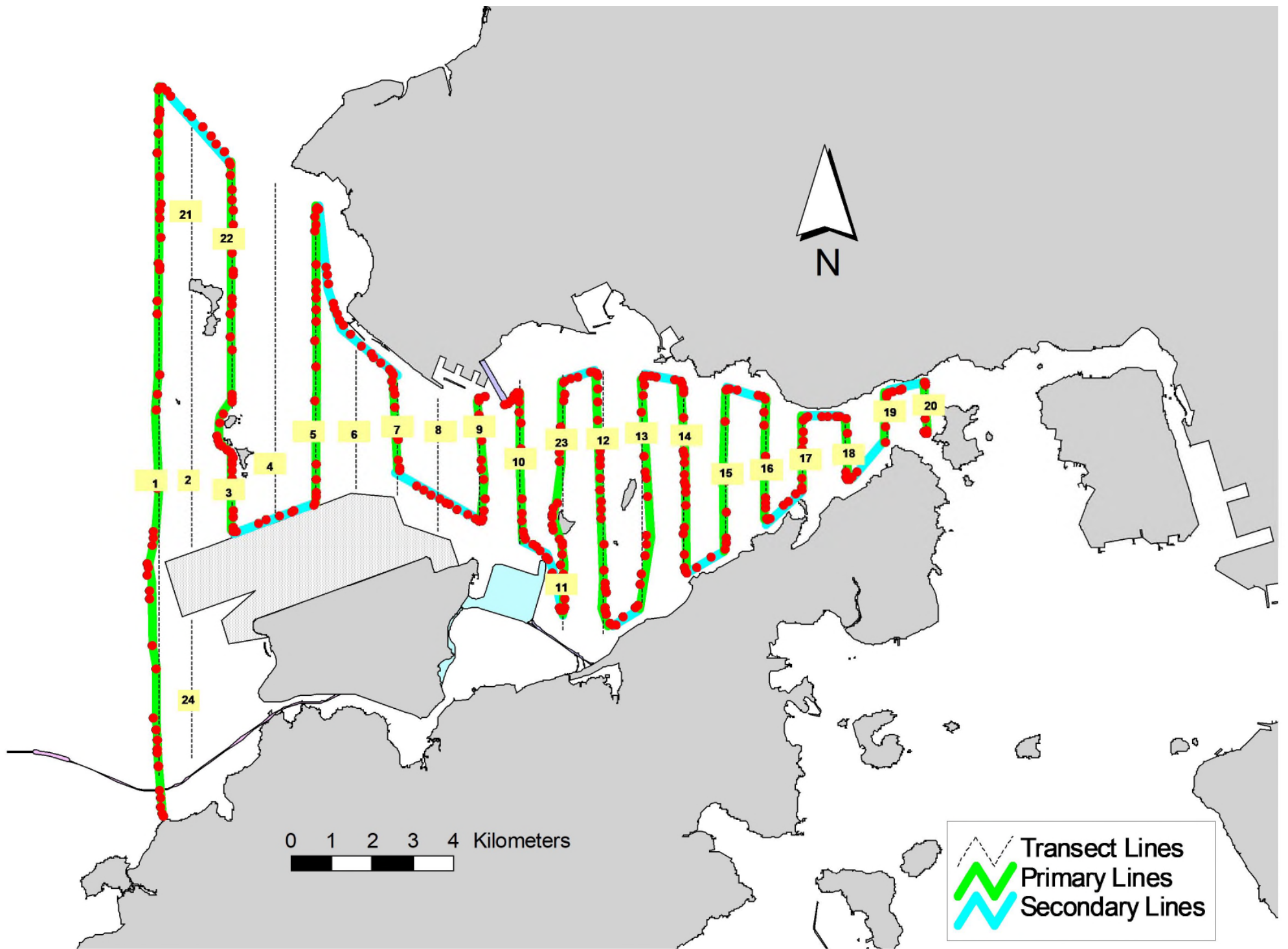


Figure 2. Survey Route on March 3rd, 2023

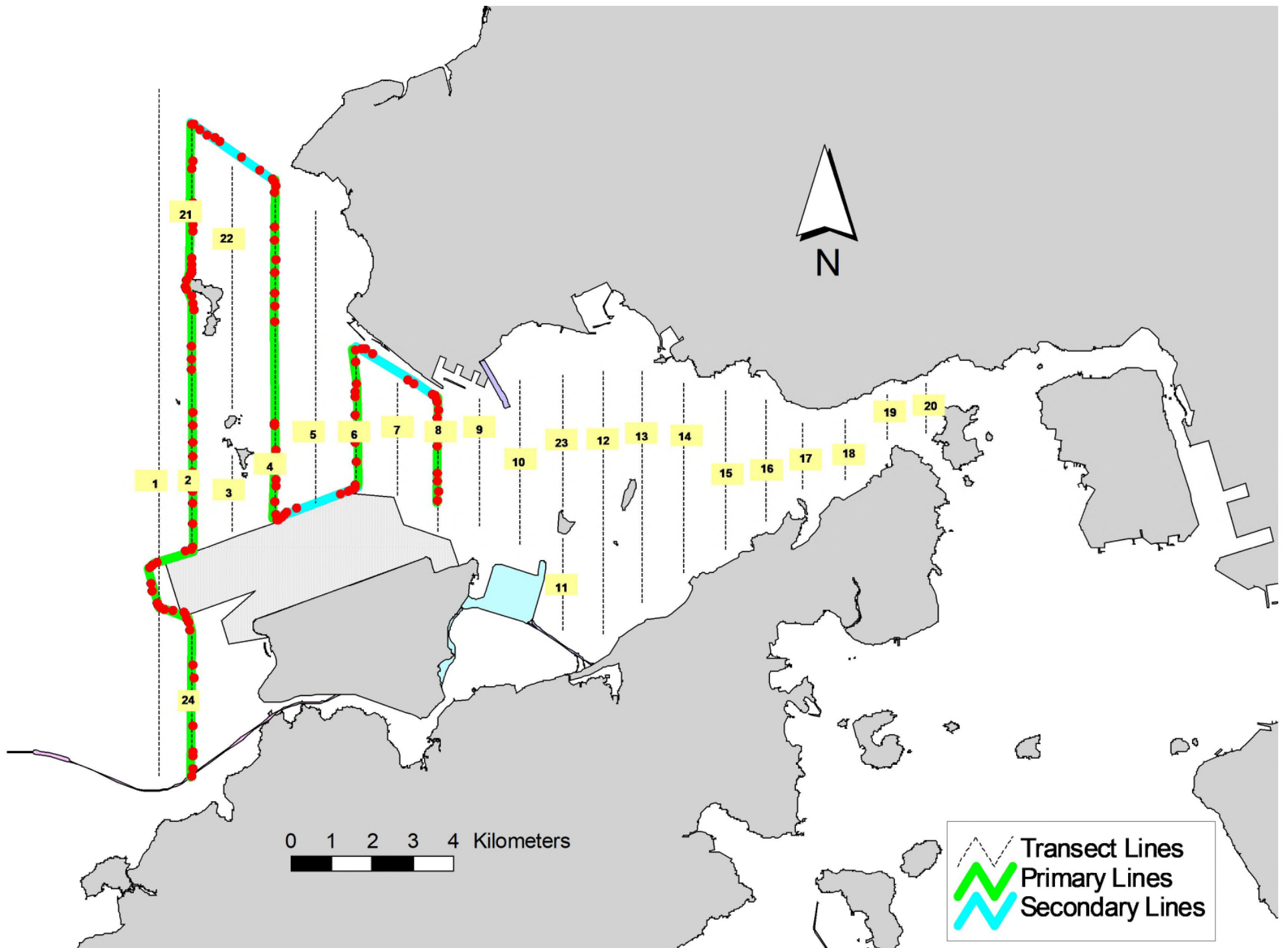


Figure 3. Survey Route on March 7th, 2023

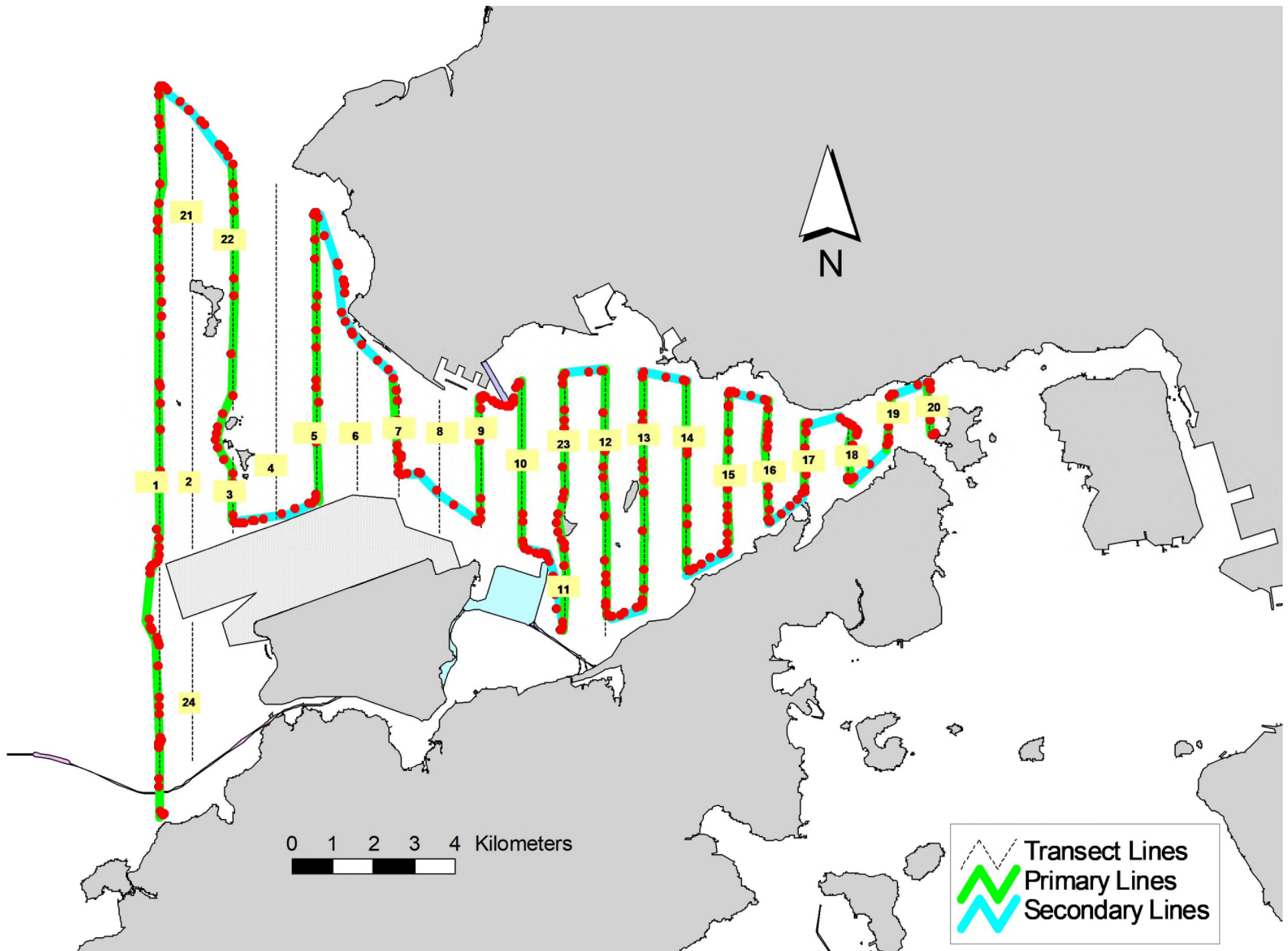


Figure 4. Survey Route on March 16th, 2023

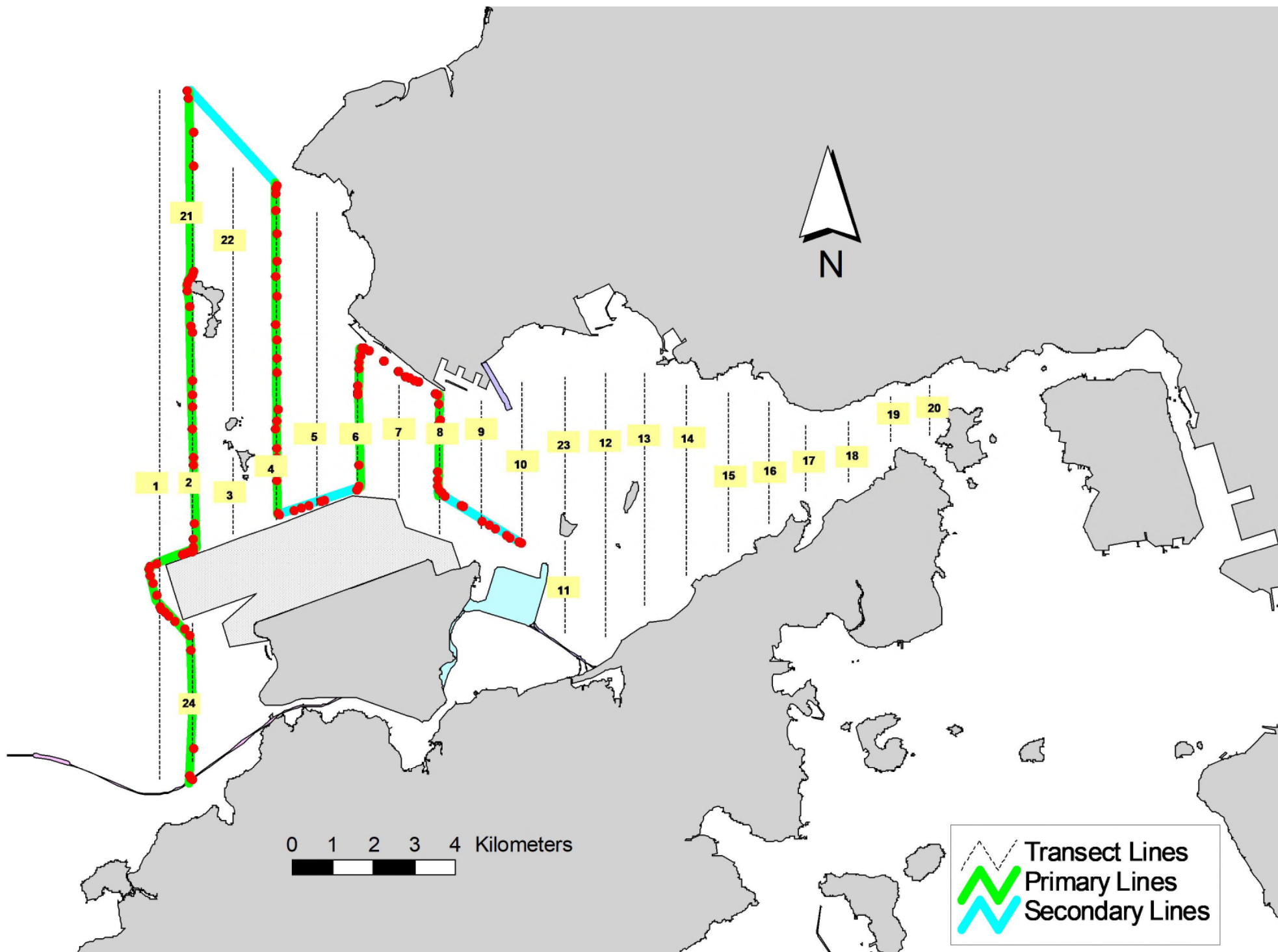


Figure 5. Survey Route on March 24th, 2023

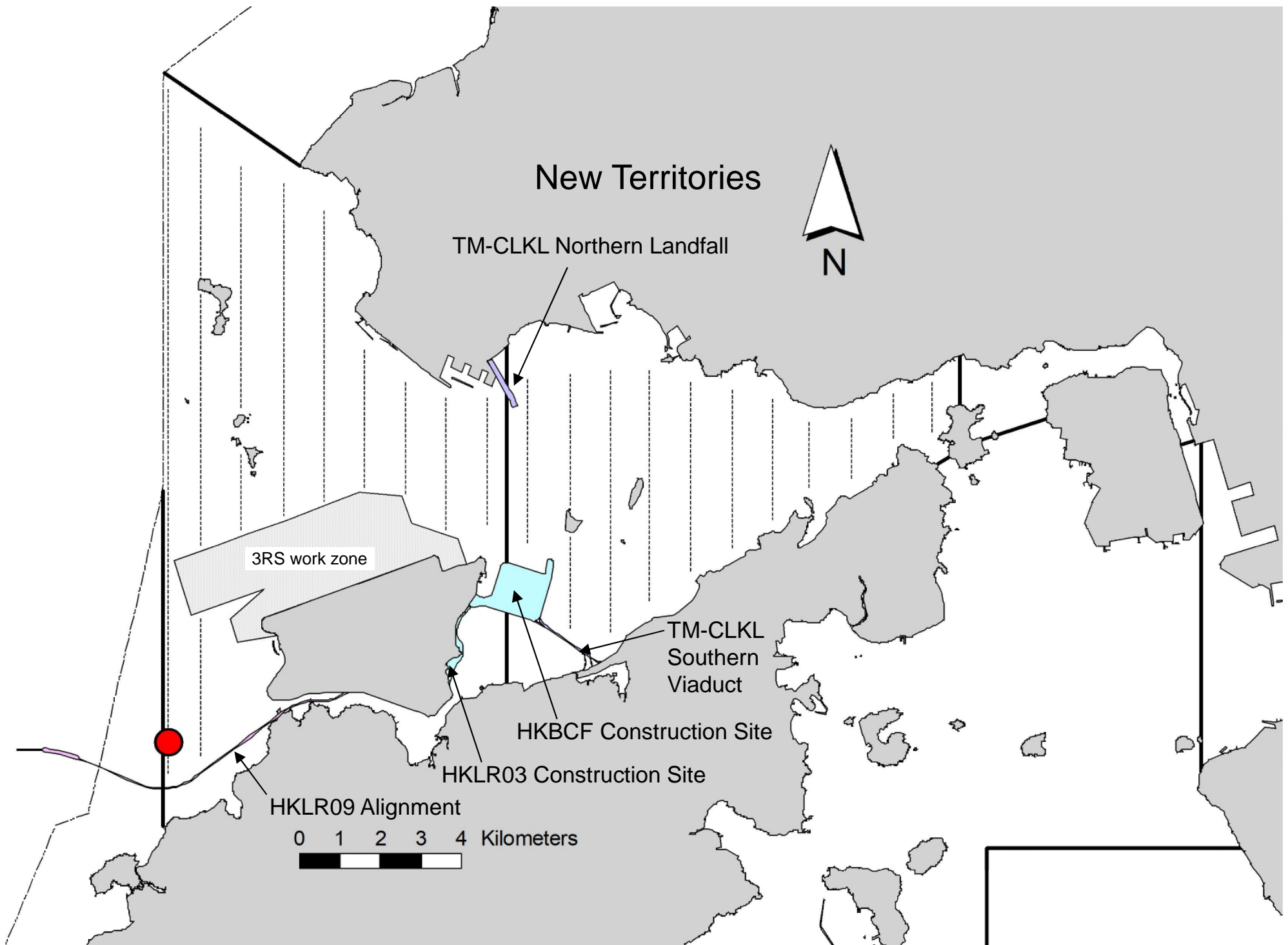


Figure 6. Distribution of Chinese White Dolphin Sightings during March 2023 HKLR03 Monitoring Surveys

Annex I. HKLR03 Survey Effort Database (March 2023)

(Abbreviations: BEAU = Beaufort Sea State; P = Primary Line Effort; S = Secondary Line Effort)

| DATE | AREA | BEAU | EFFORT | SEASON | VESSEL | TYPE | P/S |
|-----------|-----------|------|--------|--------|---------------|------|-----|
| 3-Mar-23 | NW LANTAU | 1 | 0.94 | SPRING | STANDARD36826 | HKLR | P |
| 3-Mar-23 | NW LANTAU | 2 | 16.40 | SPRING | STANDARD36826 | HKLR | P |
| 3-Mar-23 | NW LANTAU | 3 | 18.70 | SPRING | STANDARD36826 | HKLR | P |
| 3-Mar-23 | NW LANTAU | 2 | 10.20 | SPRING | STANDARD36826 | HKLR | S |
| 3-Mar-23 | NW LANTAU | 3 | 2.90 | SPRING | STANDARD36826 | HKLR | S |
| 3-Mar-23 | NE LANTAU | 2 | 35.62 | SPRING | STANDARD36826 | HKLR | P |
| 3-Mar-23 | NE LANTAU | 2 | 12.18 | SPRING | STANDARD36826 | HKLR | S |
| 7-Mar-23 | NW LANTAU | 2 | 22.93 | SPRING | STANDARD36826 | HKLR | P |
| 7-Mar-23 | NW LANTAU | 3 | 3.70 | SPRING | STANDARD36826 | HKLR | P |
| 7-Mar-23 | NW LANTAU | 2 | 8.27 | SPRING | STANDARD36826 | HKLR | S |
| 7-Mar-23 | NW LANTAU | 3 | 2.00 | SPRING | STANDARD36826 | HKLR | S |
| 16-Mar-23 | NW LANTAU | 2 | 14.28 | SPRING | STANDARD36826 | HKLR | P |
| 16-Mar-23 | NW LANTAU | 3 | 18.00 | SPRING | STANDARD36826 | HKLR | P |
| 16-Mar-23 | NW LANTAU | 2 | 5.45 | SPRING | STANDARD36826 | HKLR | S |
| 16-Mar-23 | NW LANTAU | 3 | 11.20 | SPRING | STANDARD36826 | HKLR | S |
| 16-Mar-23 | NE LANTAU | 2 | 13.96 | SPRING | STANDARD36826 | HKLR | P |
| 16-Mar-23 | NE LANTAU | 3 | 22.86 | SPRING | STANDARD36826 | HKLR | P |
| 16-Mar-23 | NE LANTAU | 2 | 7.23 | SPRING | STANDARD36826 | HKLR | S |
| 16-Mar-23 | NE LANTAU | 3 | 5.05 | SPRING | STANDARD36826 | HKLR | S |
| 24-Mar-23 | NW LANTAU | 2 | 18.51 | SPRING | STANDARD36826 | HKLR | P |
| 24-Mar-23 | NW LANTAU | 3 | 7.45 | SPRING | STANDARD36826 | HKLR | P |
| 24-Mar-23 | NW LANTAU | 2 | 5.84 | SPRING | STANDARD36826 | HKLR | S |
| 24-Mar-23 | NW LANTAU | 3 | 2.10 | SPRING | STANDARD36826 | HKLR | S |

Annex II. HKLR03 Chinese White Dolphin Sighting Database (March 2023)

(Abberviations: STG# = Sighting Number; HRD SZ = Dolphin Herd Size; BEAU = Beaufort Sea State; PSD = Perpendicular Distance; BOAT ASSOC. = Fishing Boat Association; P/S: Sighting Made on Primary/Secondary Lines)

| DATE | STG # | TIME | HRD SZ | AREA | BEAU | PSD | EFFORT | TYPE | NORTHING | EASTING | SEASON | BOAT ASSOC. | P/S |
|-----------|-------|------|--------|-----------|------|-----|--------|------|----------|---------|--------|-------------|-----|
| 16-Mar-23 | 1 | 1012 | 1 | NW LANTAU | 2 | 103 | ON | HKLR | 816234 | 804653 | SPRING | NONE | P |

Annex III. Individual dolphins identified during HKLR03 monitoring surveys in March 2023

| ID# | DATE | STG# | AREA |
|------------|-------------|-------------|-------------|
| WL79 | 16/03/23 | 1 | NW LANTAU |



Annex IV. Photograph of Identified Individual Dolphin in March 2023 (HKLR03)