

Figure 1. Transect Line Layout in Northwest and Northeast Lantau Survey Areas

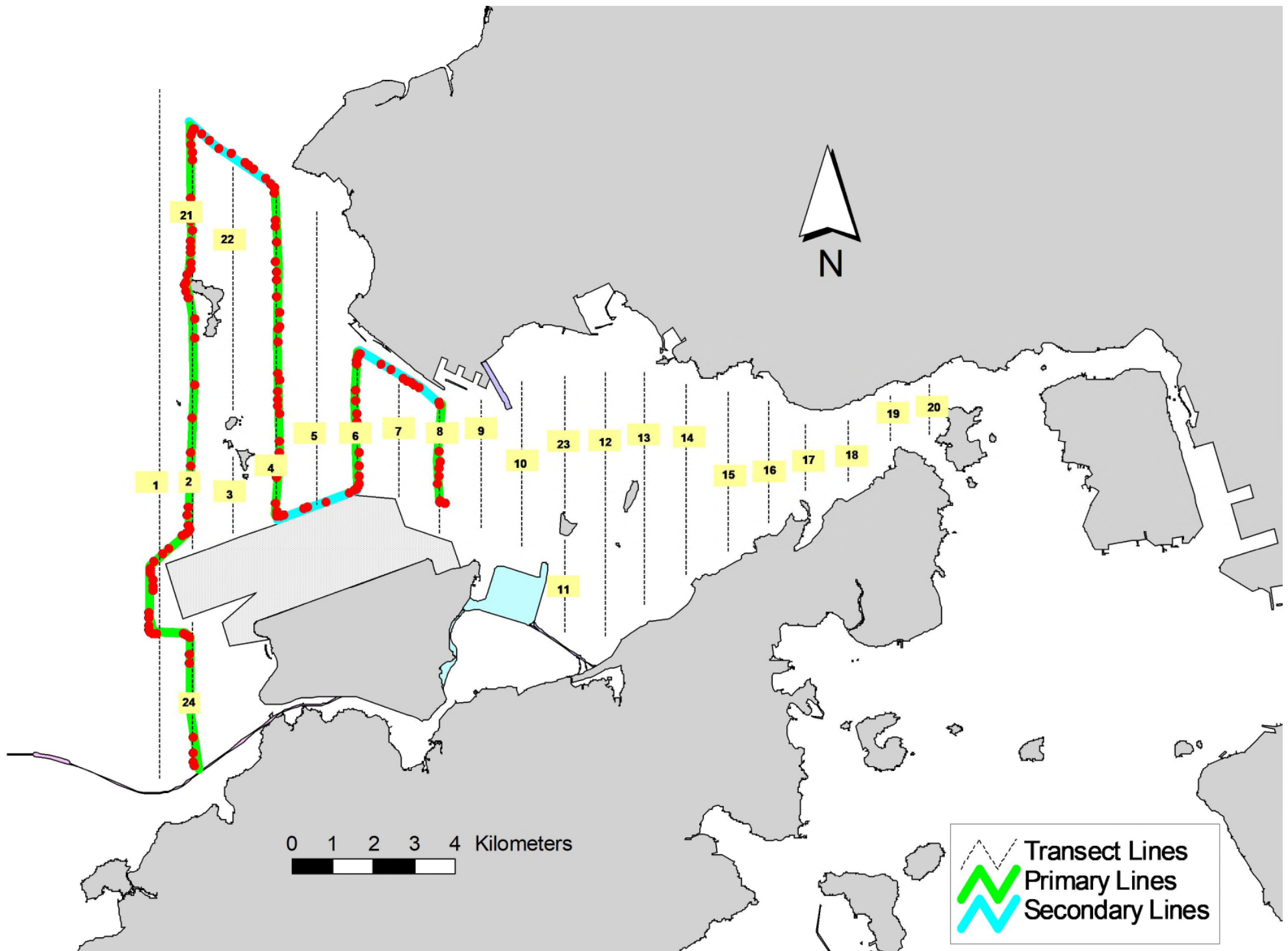


Figure 3. Survey Route on April 6th, 2023

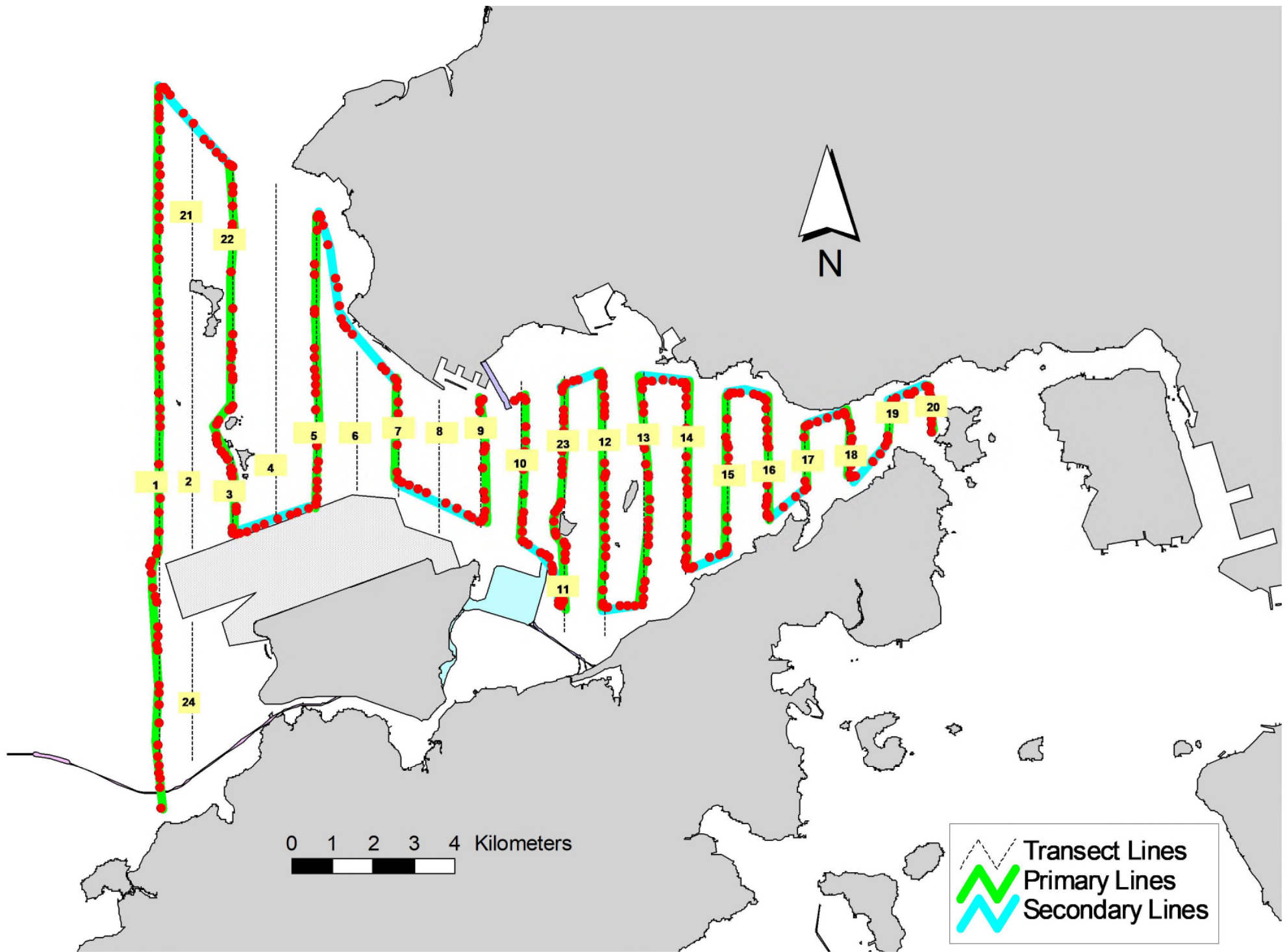


Figure 4. Survey Route on April 11th, 2023

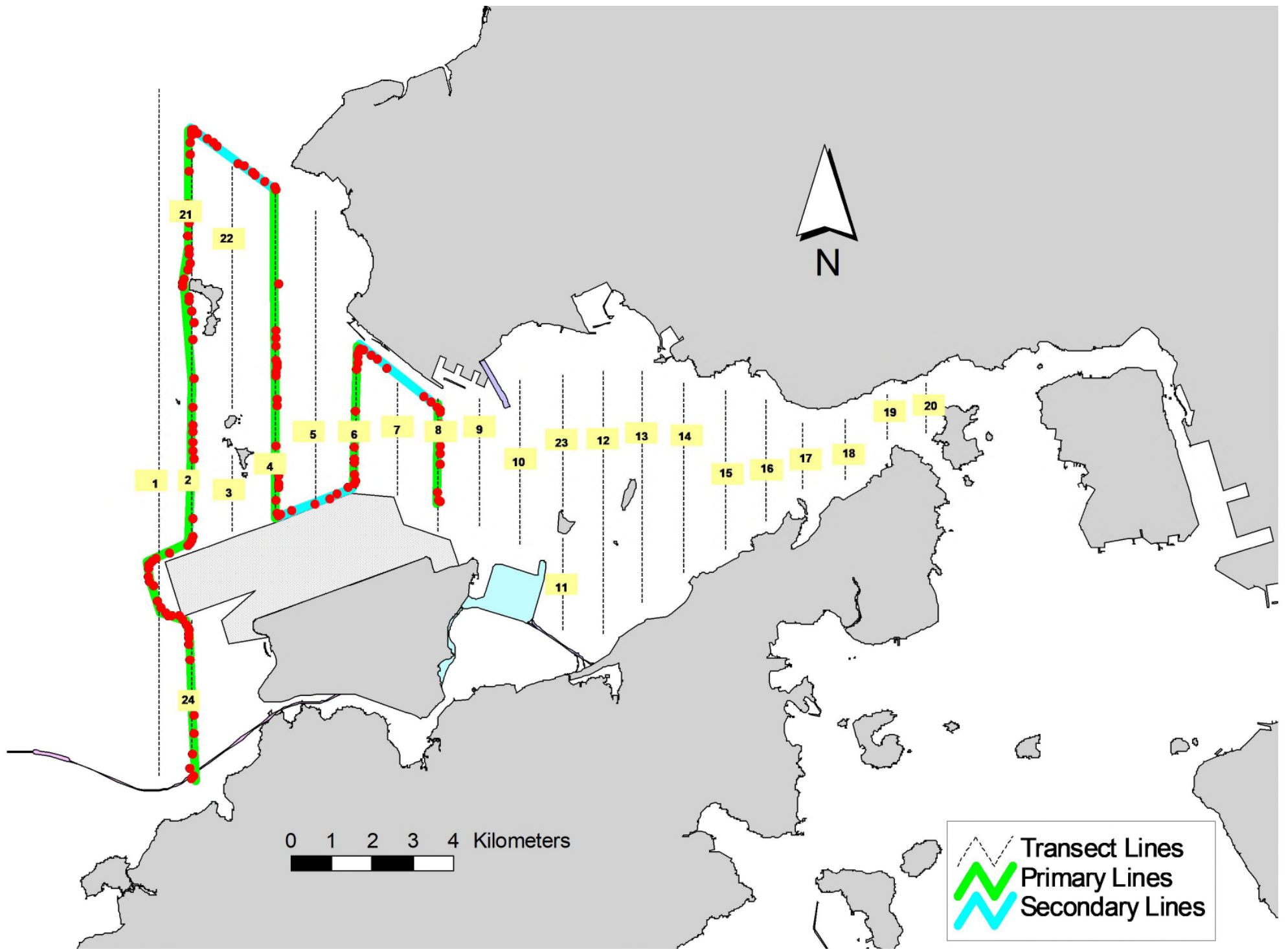


Figure 5. Survey Route on April 27th, 2023

Annex I. HKLR03 Survey Effort Database (April 2023)

(Abbreviations: BEAU = Beaufort Sea State; P = Primary Line Effort; S = Secondary Line Effort)

DATE	AREA	BEAU	EFFORT	SEASON	VESSEL	TYPE	P/S
3-Apr-23	NW LANTAU	3	24.99	SPRING	STANDARD138716	HKLR	P
3-Apr-23	NW LANTAU	4	8.29	SPRING	STANDARD138716	HKLR	P
3-Apr-23	NW LANTAU	3	11.40	SPRING	STANDARD138716	HKLR	S
3-Apr-23	NW LANTAU	4	4.72	SPRING	STANDARD138716	HKLR	S
3-Apr-23	NE LANTAU	2	5.80	SPRING	STANDARD138716	HKLR	P
3-Apr-23	NE LANTAU	3	17.29	SPRING	STANDARD138716	HKLR	P
3-Apr-23	NE LANTAU	4	13.10	SPRING	STANDARD138716	HKLR	P
3-Apr-23	NE LANTAU	2	2.80	SPRING	STANDARD138716	HKLR	S
3-Apr-23	NE LANTAU	3	4.70	SPRING	STANDARD138716	HKLR	S
3-Apr-23	NE LANTAU	4	5.11	SPRING	STANDARD138716	HKLR	S
6-Apr-23	NW LANTAU	2	14.43	SPRING	STANDARD138716	HKLR	P
6-Apr-23	NW LANTAU	3	9.17	SPRING	STANDARD138716	HKLR	P
6-Apr-23	NW LANTAU	2	6.77	SPRING	STANDARD138716	HKLR	S
6-Apr-23	NW LANTAU	3	5.83	SPRING	STANDARD138716	HKLR	S
11-Apr-23	NW LANTAU	2	28.78	SPRING	STANDARD138716	HKLR	P
11-Apr-23	NW LANTAU	3	6.03	SPRING	STANDARD138716	HKLR	P
11-Apr-23	NW LANTAU	2	14.29	SPRING	STANDARD138716	HKLR	S
11-Apr-23	NE LANTAU	2	26.40	SPRING	STANDARD138716	HKLR	P
11-Apr-23	NE LANTAU	3	7.90	SPRING	STANDARD138716	HKLR	P
11-Apr-23	NE LANTAU	2	11.20	SPRING	STANDARD138716	HKLR	S
11-Apr-23	NE LANTAU	3	1.00	SPRING	STANDARD138716	HKLR	S
27-Apr-23	NW LANTAU	2	2.90	SPRING	STANDARD138716	HKLR	P
27-Apr-23	NW LANTAU	3	21.30	SPRING	STANDARD138716	HKLR	P
27-Apr-23	NW LANTAU	2	2.50	SPRING	STANDARD138716	HKLR	S
27-Apr-23	NW LANTAU	3	9.40	SPRING	STANDARD138716	HKLR	S