

Figure 1. Transect Line Layout in Northwest and Northeast Lantau Survey Areas

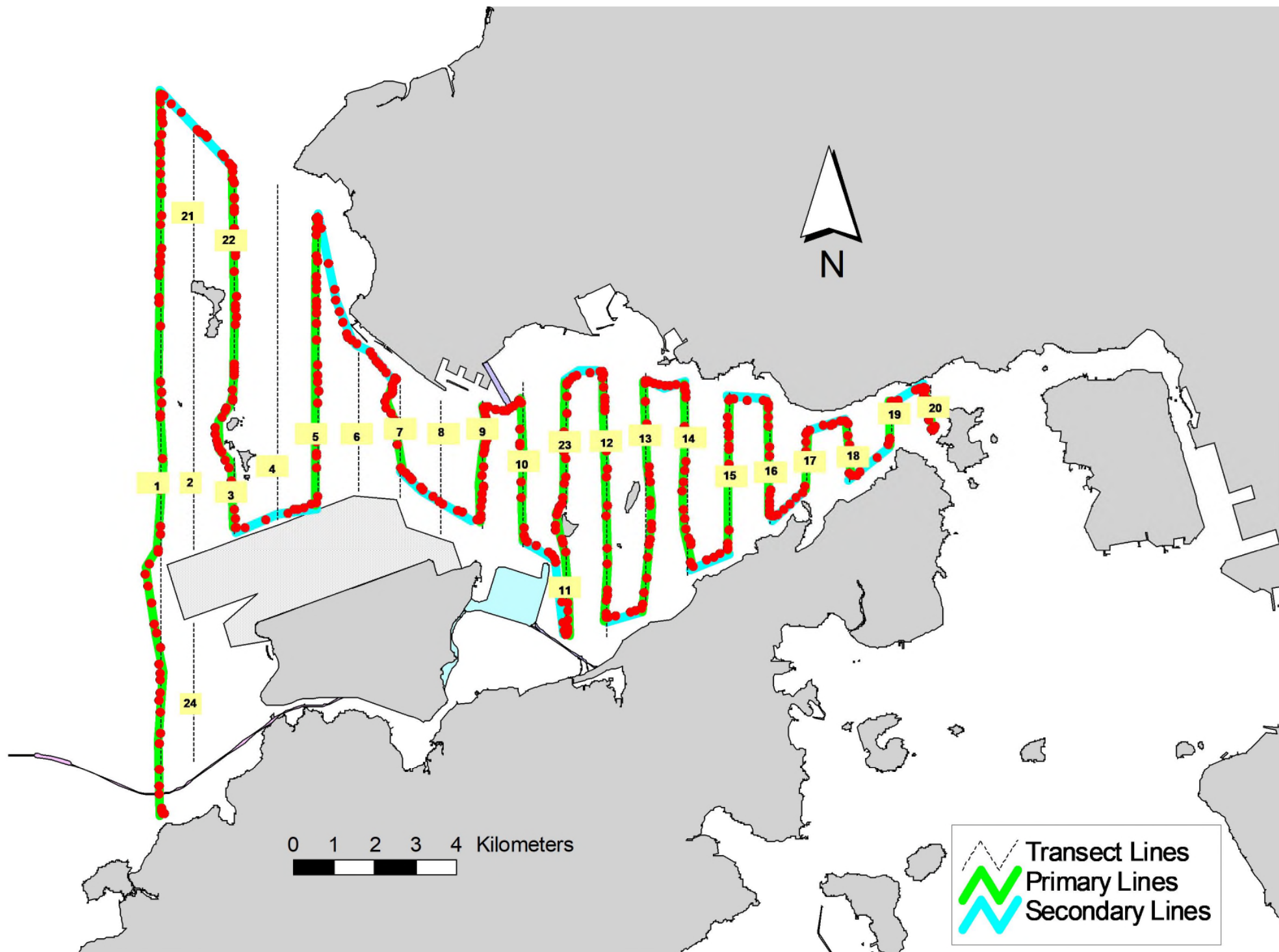


Figure 2. Survey Route on May 2nd, 2023

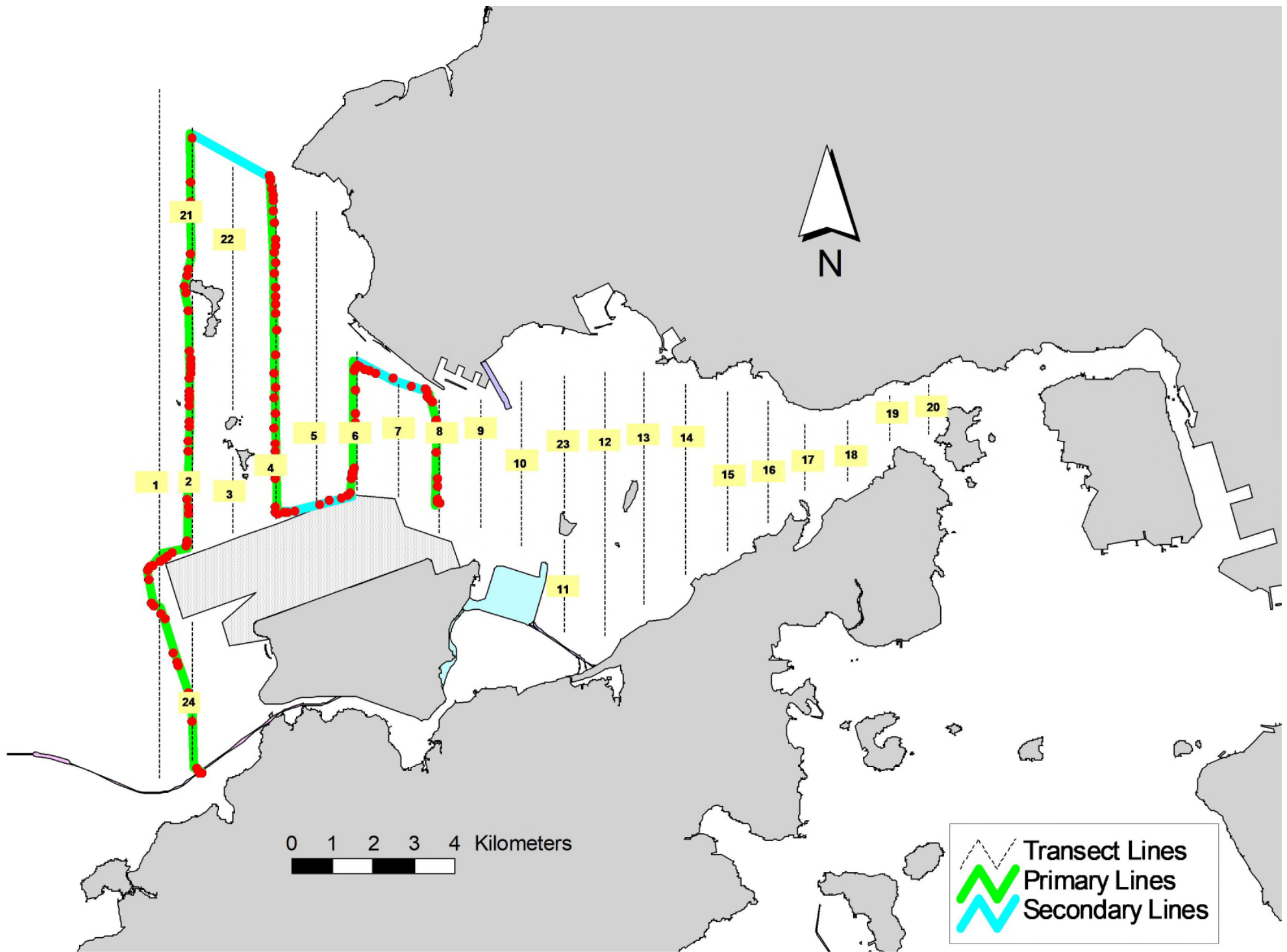


Figure 3. Survey Route on May 5th, 2023

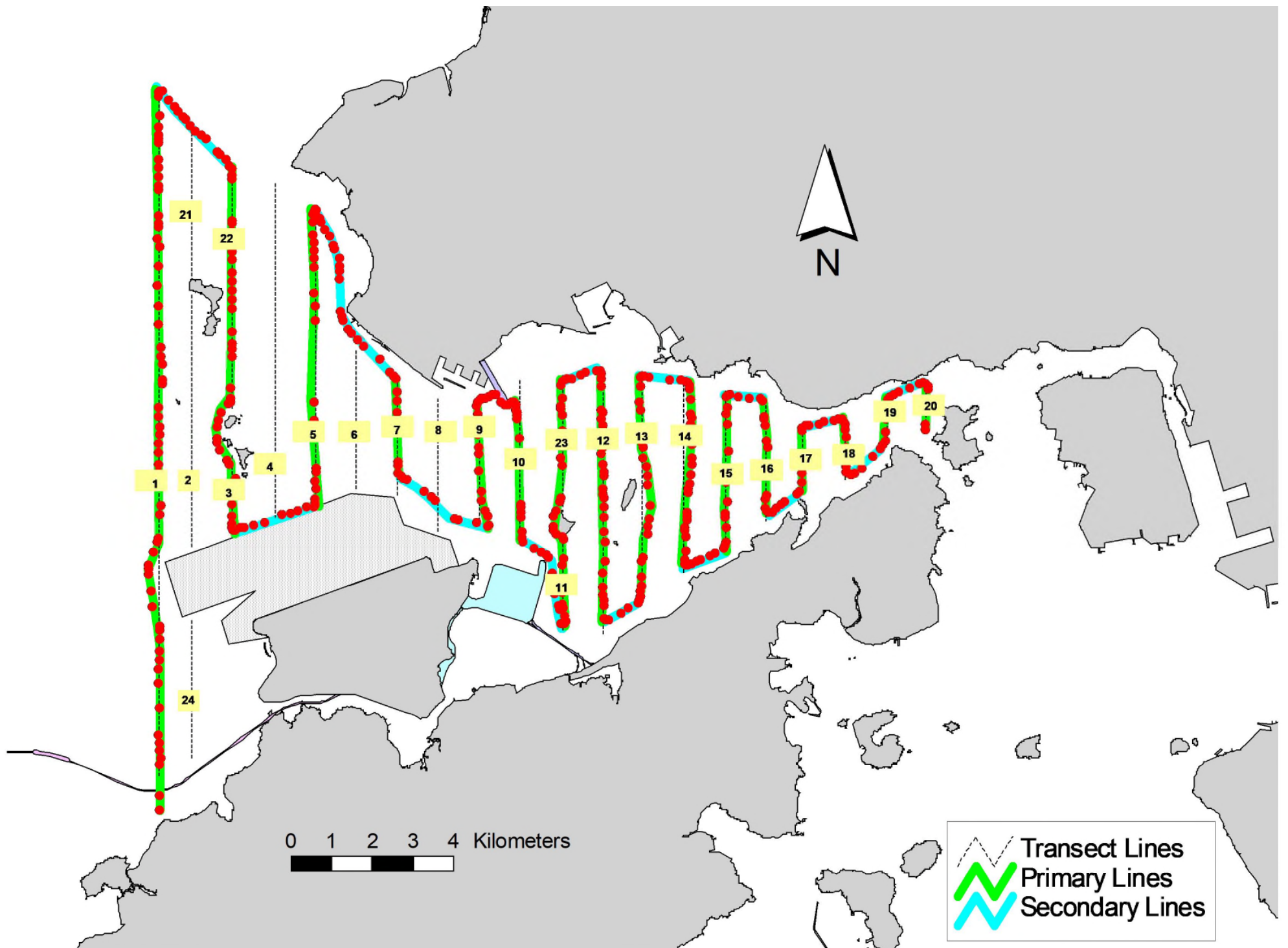


Figure 4. Survey Route on May 9th, 2023

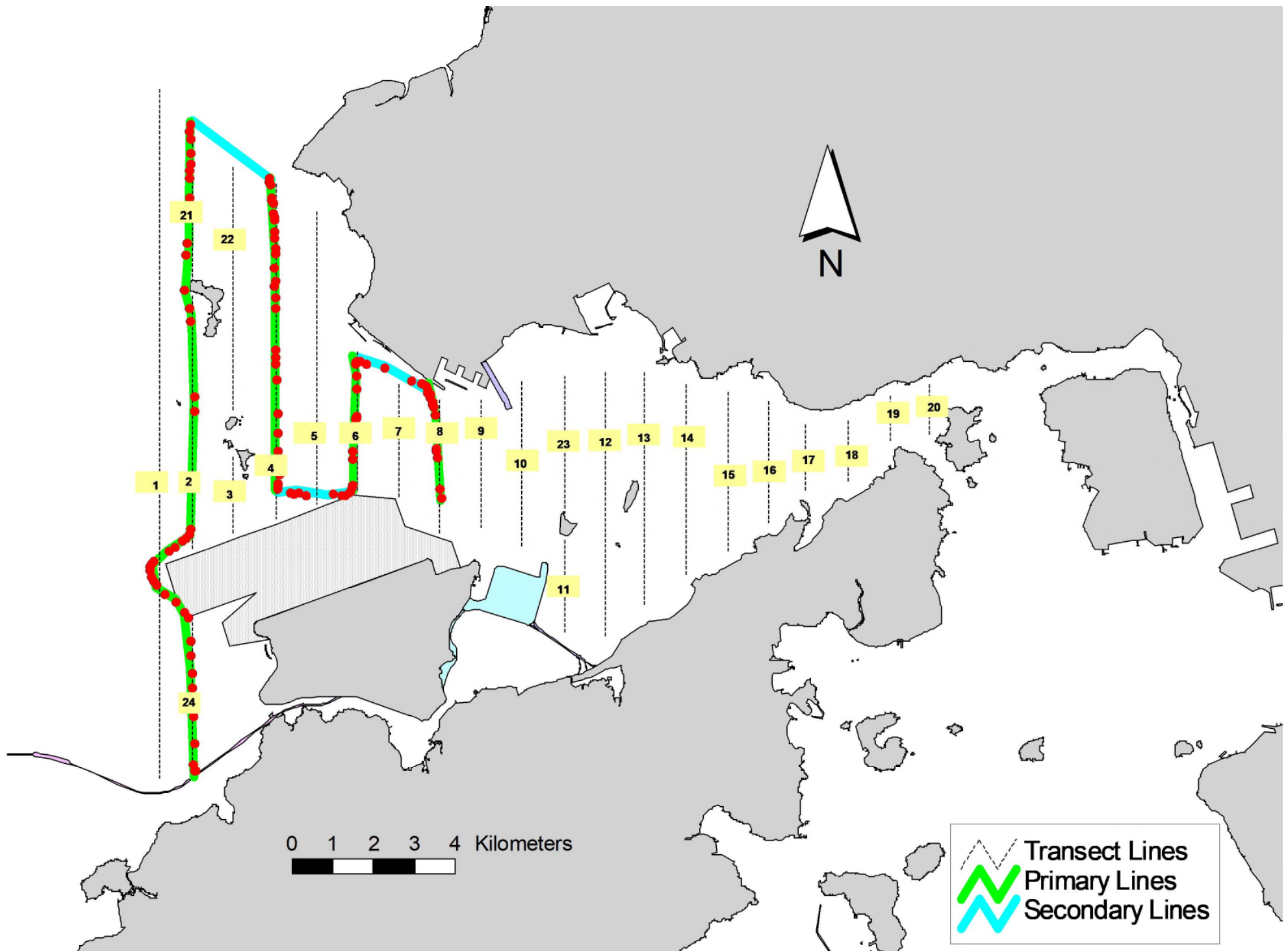


Figure 5. Survey Route on May 10th, 2023

Annex I. HKLR03 Survey Effort Database (May 2023)

(Abbreviations: BEAU = Beaufort Sea State; P = Primary Line Effort; S = Secondary Line Effort)

DATE	AREA	BEAU	EFFORT	SEASON	VESSEL	TYPE	P/S
2-May-23	NW LANTAU	2	7.99	SPRING	STANDARD25686	HKLR	P
2-May-23	NW LANTAU	3	27.41	SPRING	STANDARD25686	HKLR	P
2-May-23	NW LANTAU	2	4.40	SPRING	STANDARD25686	HKLR	S
2-May-23	NW LANTAU	3	8.70	SPRING	STANDARD25686	HKLR	S
2-May-23	NE LANTAU	2	31.87	SPRING	STANDARD25686	HKLR	P
2-May-23	NE LANTAU	3	2.40	SPRING	STANDARD25686	HKLR	P
2-May-23	NE LANTAU	2	12.53	SPRING	STANDARD25686	HKLR	S
5-May-23	NW LANTAU	2	24.20	SPRING	STANDARD25686	HKLR	P
5-May-23	NW LANTAU	3	8.80	SPRING	STANDARD25686	HKLR	S
9-May-23	NW LANTAU	2	4.76	SPRING	STANDARD25686	HKLR	P
9-May-23	NW LANTAU	3	28.95	SPRING	STANDARD25686	HKLR	P
9-May-23	NW LANTAU	2	7.70	SPRING	STANDARD25686	HKLR	S
9-May-23	NW LANTAU	3	8.29	SPRING	STANDARD25686	HKLR	S
9-May-23	NE LANTAU	3	35.11	SPRING	STANDARD25686	HKLR	P
9-May-23	NE LANTAU	3	12.19	SPRING	STANDARD25686	HKLR	S
10-May-23	NW LANTAU	2	4.10	SPRING	STANDARD25686	HKLR	P
10-May-23	NW LANTAU	3	21.04	SPRING	STANDARD25686	HKLR	P
10-May-23	NW LANTAU	2	0.70	SPRING	STANDARD25686	HKLR	S
10-May-23	NW LANTAU	3	6.76	SPRING	STANDARD25686	HKLR	S