

Figure 1. Transect Line Layout in Northwest and Northeast Lantau Survey Areas

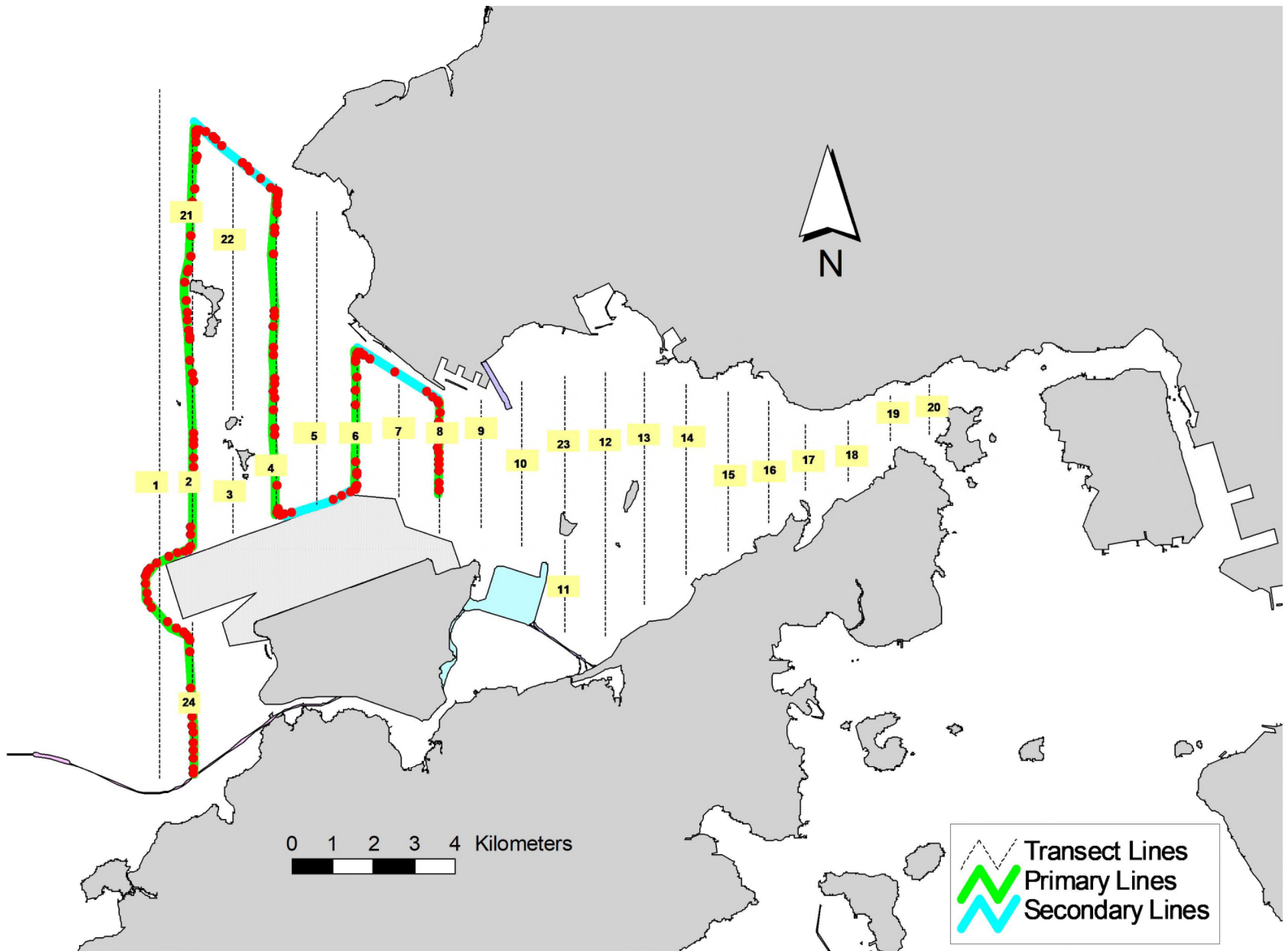


Figure 2. Survey Route on June 5th, 2023

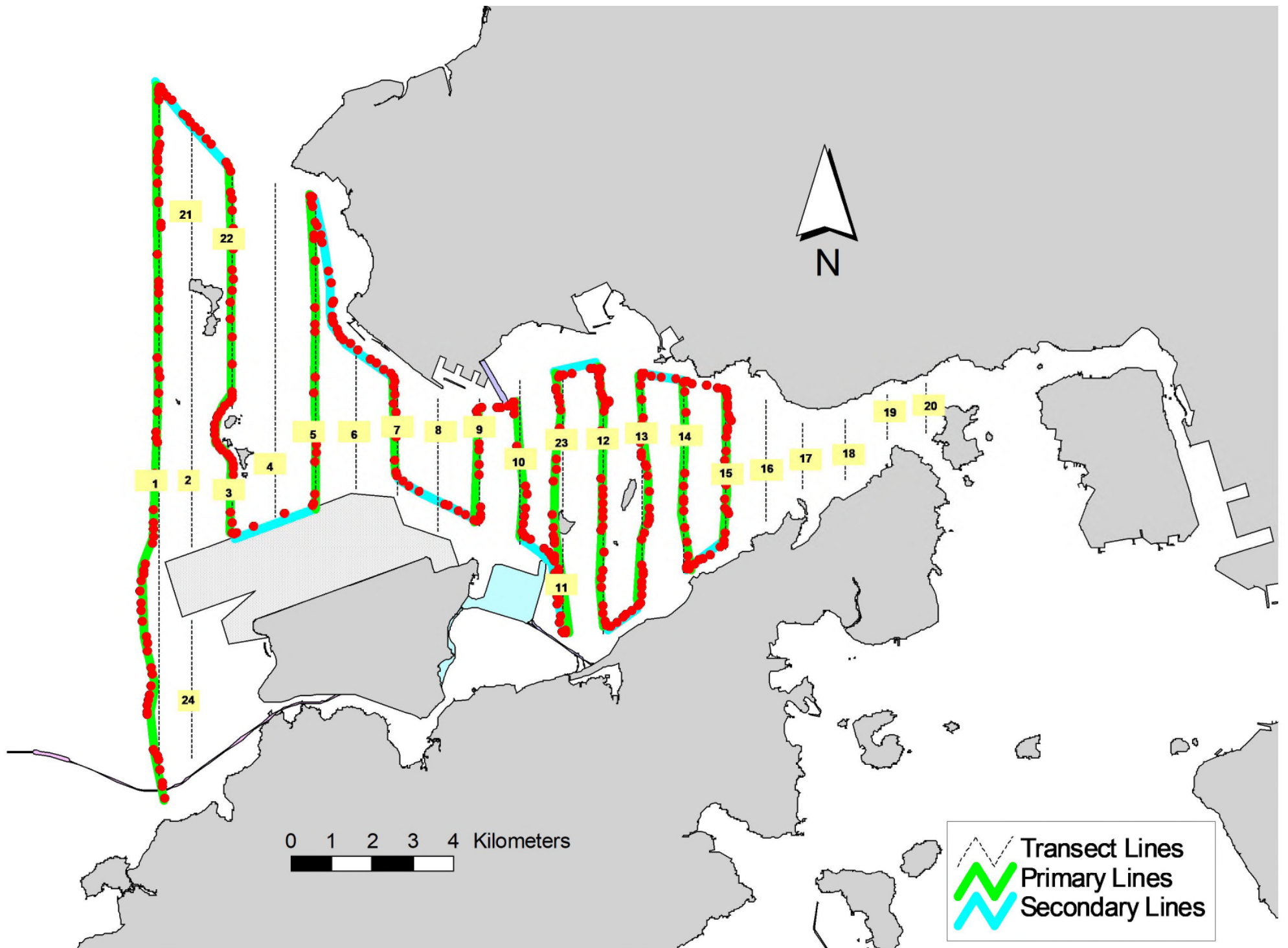


Figure 3. Survey Route on June 6th, 2023

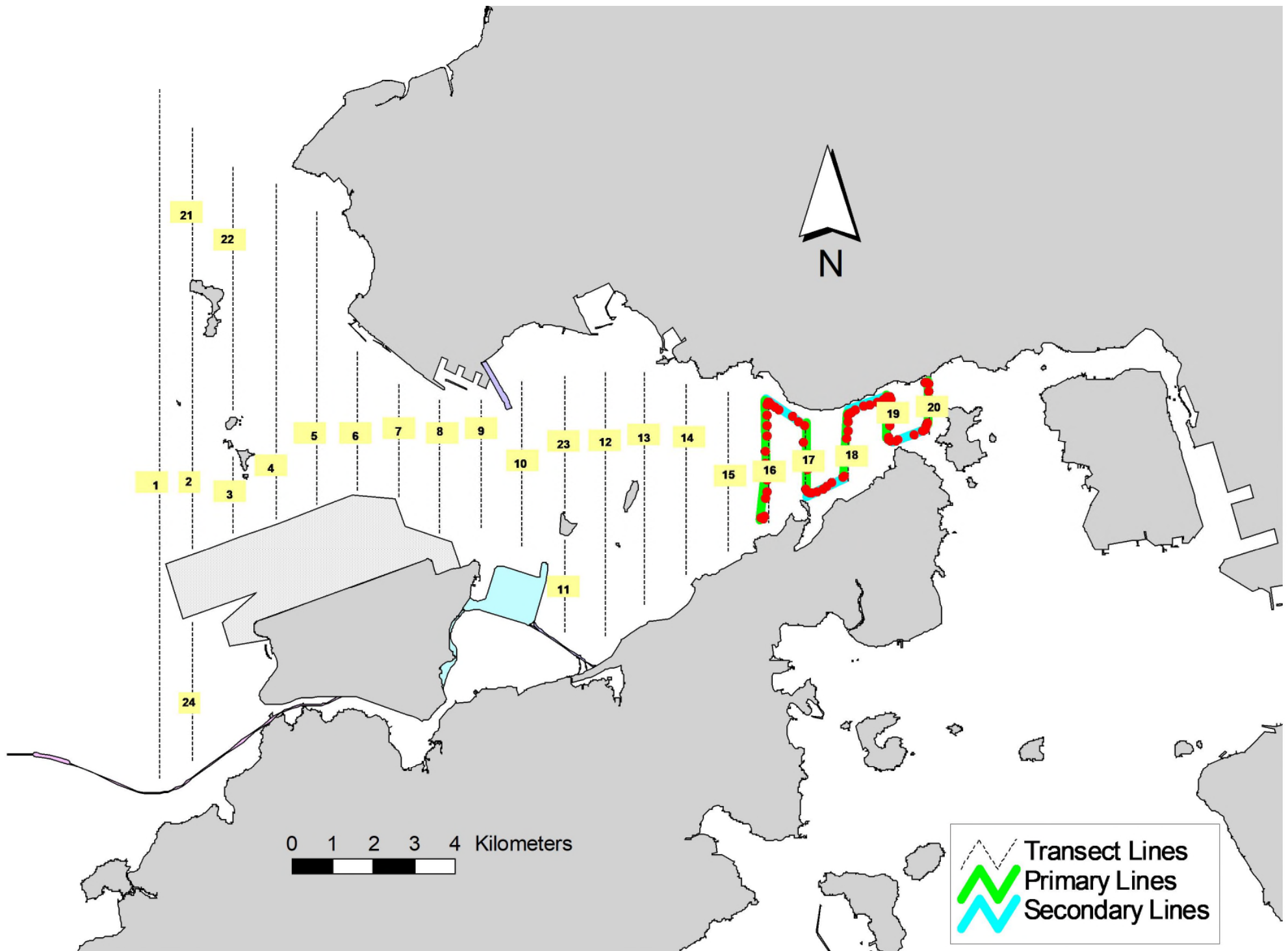


Figure 4. Survey Route on June 12th, 2023

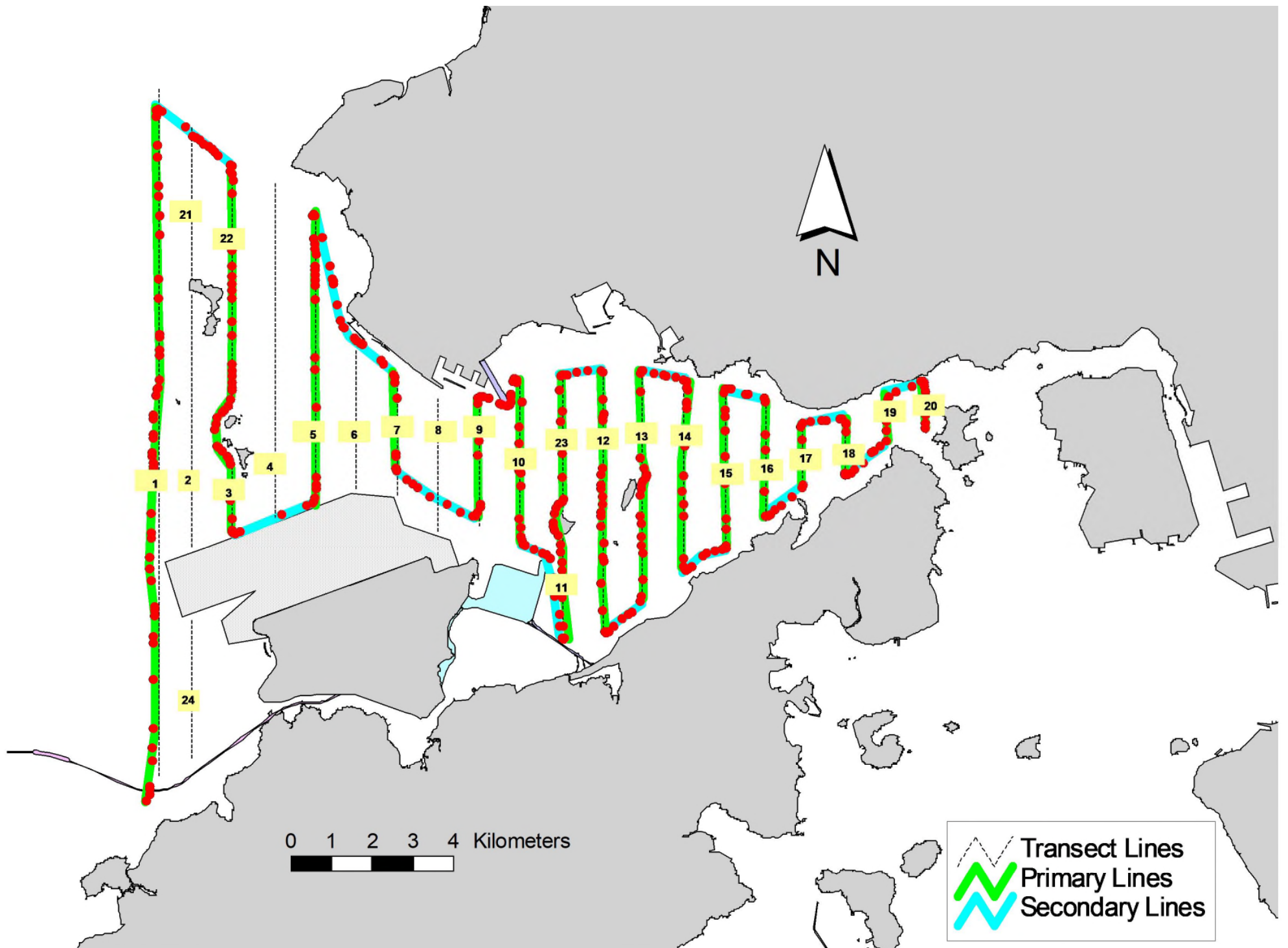


Figure 5. Survey Route on June 19th, 2023

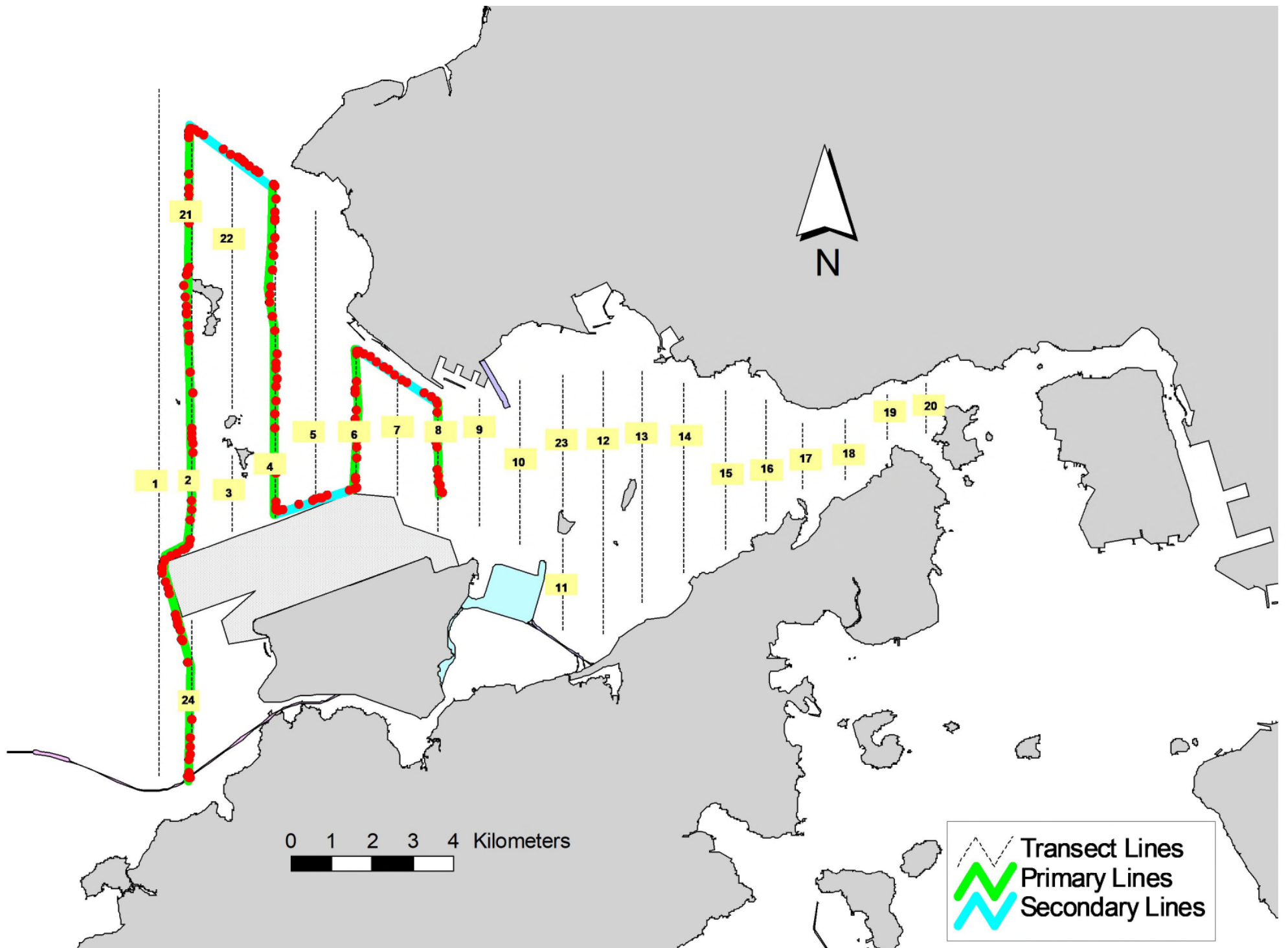


Figure 6. Survey Route on June 20th, 2023

Appendix I. HKLR03 Survey Effort Database (June 2023)

(Abbreviations: BEAU = Beaufort Sea State; P = Primary Line Effort; S = Secondary Line Effort)

| DATE | AREA | BEAU | EFFORT | SEASON | VESSEL | TYPE | P/S |
|-----------|-----------|------|--------|--------|---------------|------|-----|
| 5-Jun-23 | NW LANTAU | 2 | 1.40 | SUMMER | STANDARD36826 | HKLR | P |
| 5-Jun-23 | NW LANTAU | 3 | 24.03 | SUMMER | STANDARD36826 | HKLR | P |
| 5-Jun-23 | NW LANTAU | 2 | 1.85 | SUMMER | STANDARD36826 | HKLR | S |
| 5-Jun-23 | NW LANTAU | 3 | 8.62 | SUMMER | STANDARD36826 | HKLR | S |
| 6-Jun-23 | NW LANTAU | 2 | 18.29 | SUMMER | STANDARD25686 | HKLR | P |
| 6-Jun-23 | NW LANTAU | 3 | 16.79 | SUMMER | STANDARD25686 | HKLR | P |
| 6-Jun-23 | NW LANTAU | 2 | 10.38 | SUMMER | STANDARD25686 | HKLR | S |
| 6-Jun-23 | NW LANTAU | 3 | 1.80 | SUMMER | STANDARD25686 | HKLR | S |
| 6-Jun-23 | NE LANTAU | 2 | 24.96 | SUMMER | STANDARD25686 | HKLR | P |
| 6-Jun-23 | NE LANTAU | 3 | 0.71 | SUMMER | STANDARD25686 | HKLR | P |
| 6-Jun-23 | NE LANTAU | 2 | 10.19 | SUMMER | STANDARD25686 | HKLR | S |
| 12-Jun-23 | NE LANTAU | 2 | 8.03 | SUMMER | STANDARD25686 | HKLR | P |
| 12-Jun-23 | NE LANTAU | 2 | 4.07 | SUMMER | STANDARD25686 | HKLR | S |
| 19-Jun-23 | NW LANTAU | 2 | 8.38 | SUMMER | STANDARD25686 | HKLR | P |
| 19-Jun-23 | NW LANTAU | 3 | 26.52 | SUMMER | STANDARD25686 | HKLR | P |
| 19-Jun-23 | NW LANTAU | 2 | 2.20 | SUMMER | STANDARD25686 | HKLR | S |
| 19-Jun-23 | NW LANTAU | 3 | 10.70 | SUMMER | STANDARD25686 | HKLR | S |
| 19-Jun-23 | NE LANTAU | 2 | 27.00 | SUMMER | STANDARD25686 | HKLR | P |
| 19-Jun-23 | NE LANTAU | 3 | 9.90 | SUMMER | STANDARD25686 | HKLR | P |
| 19-Jun-23 | NE LANTAU | 2 | 12.30 | SUMMER | STANDARD25686 | HKLR | S |
| 19-Jun-23 | NE LANTAU | 3 | 1.00 | SUMMER | STANDARD25686 | HKLR | S |
| 20-Jun-23 | NW LANTAU | 2 | 5.22 | SUMMER | STANDARD36826 | HKLR | P |
| 20-Jun-23 | NW LANTAU | 3 | 20.45 | SUMMER | STANDARD36826 | HKLR | P |
| 20-Jun-23 | NW LANTAU | 2 | 4.19 | SUMMER | STANDARD36826 | HKLR | S |
| 20-Jun-23 | NW LANTAU | 3 | 3.94 | SUMMER | STANDARD36826 | HKLR | S |
| 20-Jun-23 | NW LANTAU | 4 | 1.50 | SUMMER | STANDARD36826 | HKLR | S |