

Figure 1. Transect Line Layout in Northwest and Northeast Lantau Survey Areas

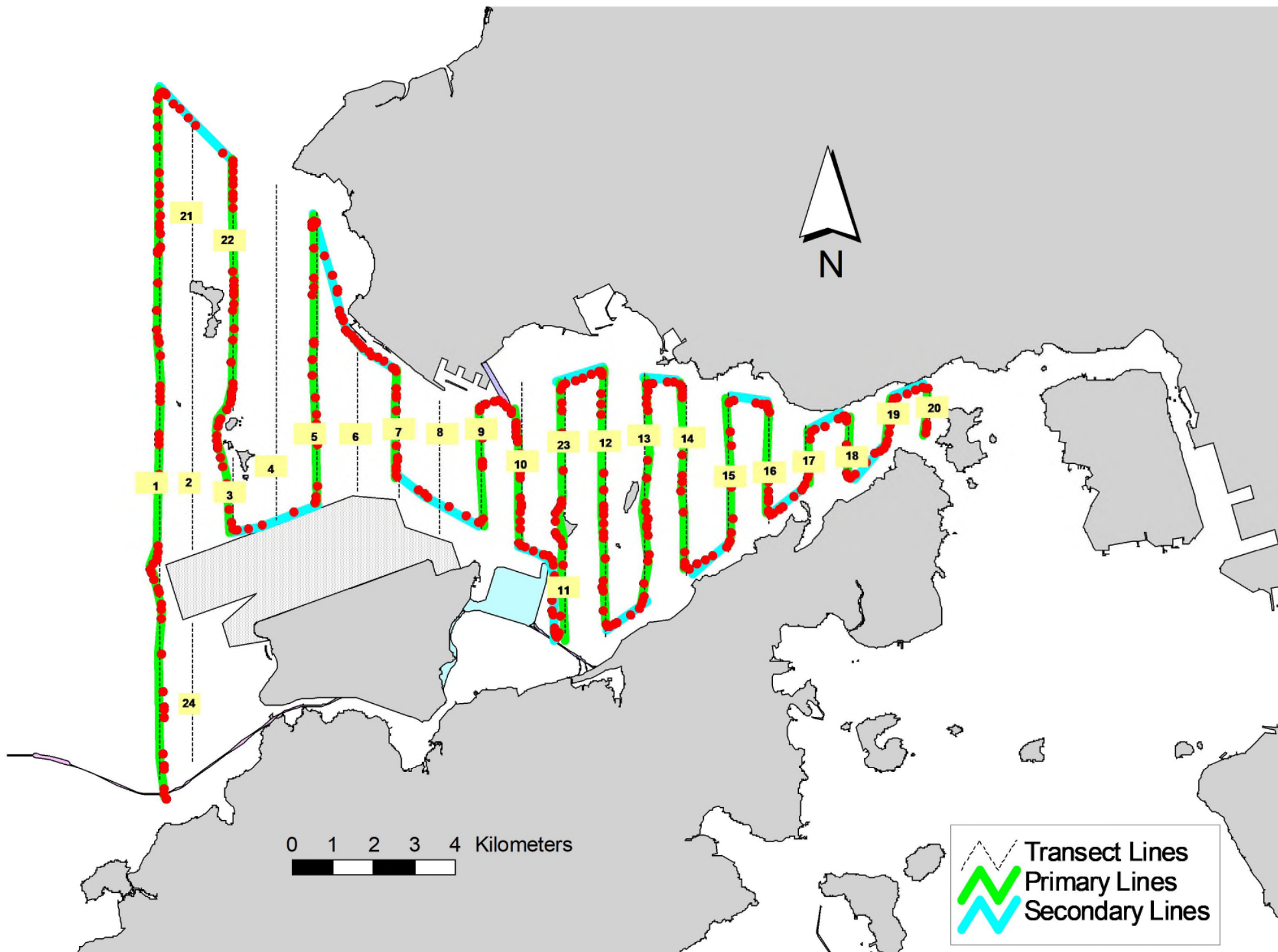


Figure 2. Survey Route on July 5th, 2023

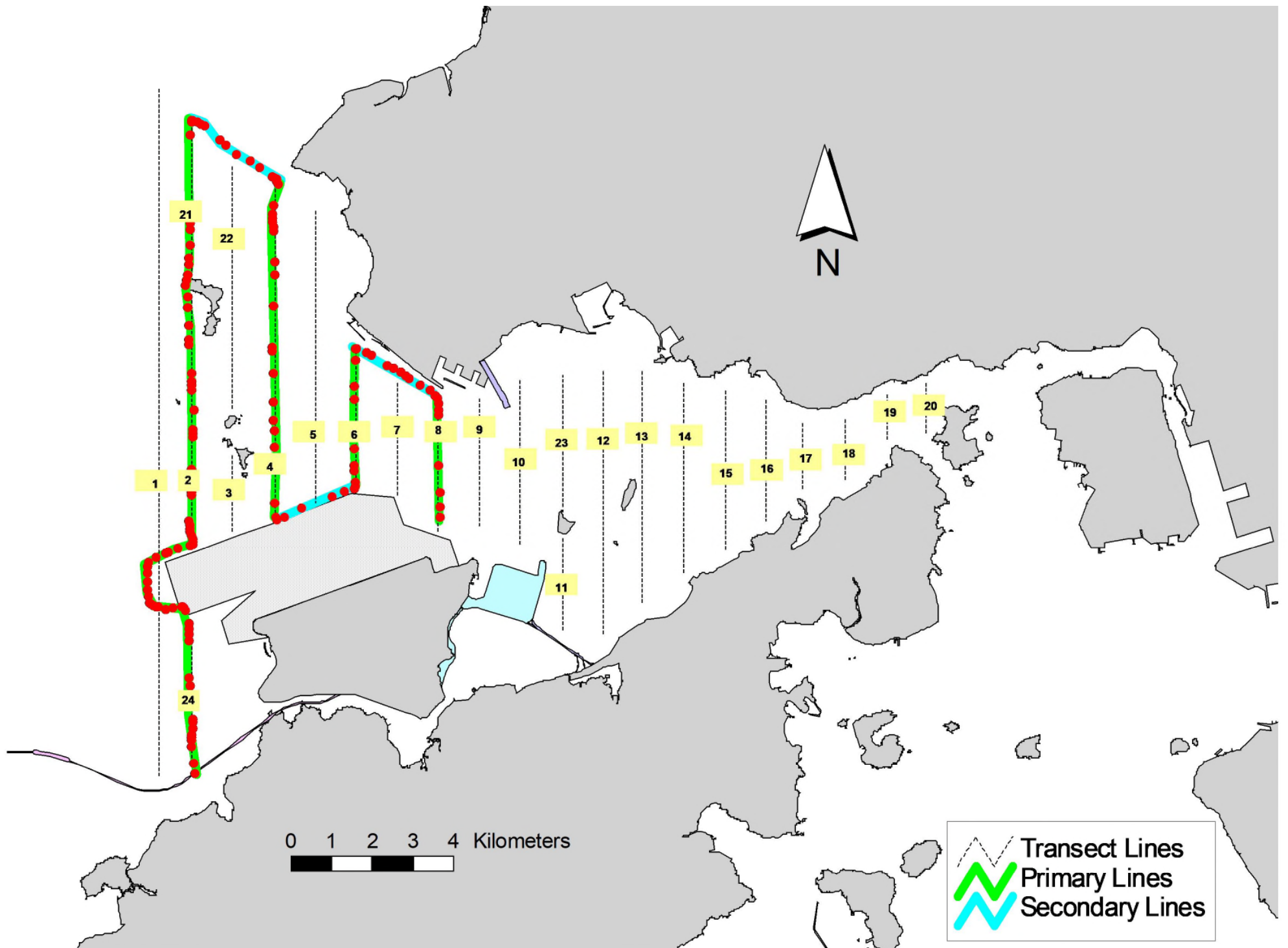


Figure 3. Survey Route on July 7th, 2023

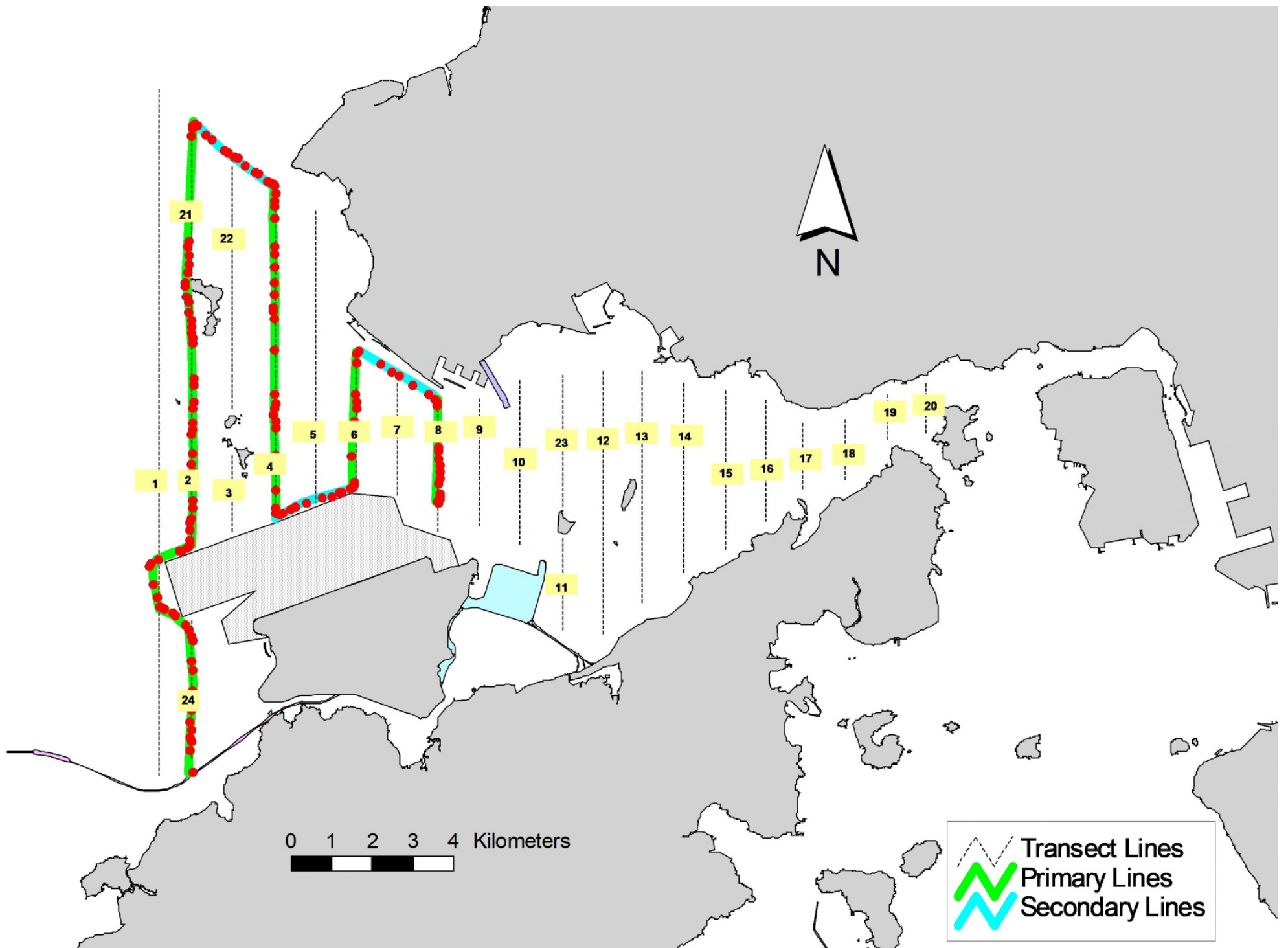


Figure 4. Survey Route on July 25th, 2023

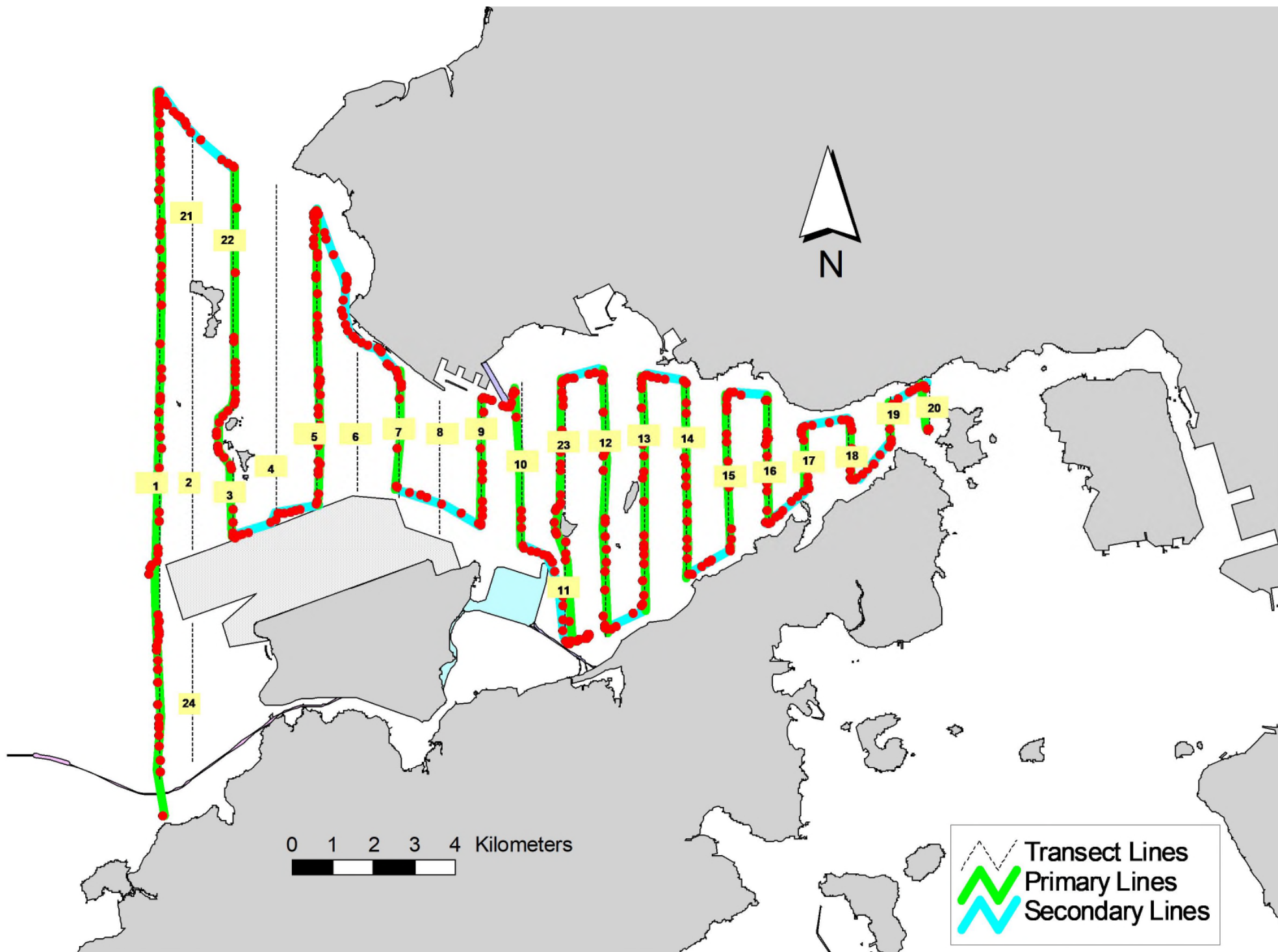


Figure 5. Survey Route on July 26th, 2023

Appendix I. HKLR03 Survey Effort Database (July 2023)

(Abbreviations: BEAU = Beaufort Sea State; P = Primary Line Effort; S = Secondary Line Effort)

DATE	AREA	BEAU	EFFORT	SEASON	VESSEL	TYPE	P/S
5-Jul-23	NW LANTAU	2	8.79	SUMMER	STANDARD25686	HKLR	P
5-Jul-23	NW LANTAU	3	25.14	SUMMER	STANDARD25686	HKLR	P
5-Jul-23	NW LANTAU	2	1.17	SUMMER	STANDARD25686	HKLR	S
5-Jul-23	NW LANTAU	3	13.10	SUMMER	STANDARD25686	HKLR	S
5-Jul-23	NE LANTAU	2	27.47	SUMMER	STANDARD25686	HKLR	P
5-Jul-23	NE LANTAU	3	6.77	SUMMER	STANDARD25686	HKLR	P
5-Jul-23	NE LANTAU	2	10.73	SUMMER	STANDARD25686	HKLR	S
5-Jul-23	NE LANTAU	3	2.13	SUMMER	STANDARD25686	HKLR	S
7-Jul-23	NW LANTAU	2	3.50	SUMMER	STANDARD25686	HKLR	P
7-Jul-23	NW LANTAU	3	23.70	SUMMER	STANDARD25686	HKLR	P
7-Jul-23	NW LANTAU	3	10.40	SUMMER	STANDARD25686	HKLR	S
25-Jul-23	NW LANTAU	1	7.40	SUMMER	STANDARD36826	HKLR	P
25-Jul-23	NW LANTAU	2	18.25	SUMMER	STANDARD36826	HKLR	P
25-Jul-23	NW LANTAU	1	1.90	SUMMER	STANDARD36826	HKLR	S
25-Jul-23	NW LANTAU	2	8.65	SUMMER	STANDARD36826	HKLR	S
26-Jul-23	NW LANTAU	2	37.15	SUMMER	STANDARD25686	HKLR	P
26-Jul-23	NW LANTAU	2	12.85	SUMMER	STANDARD25686	HKLR	S
26-Jul-23	NE LANTAU	2	36.02	SUMMER	STANDARD25686	HKLR	P
26-Jul-23	NE LANTAU	2	14.78	SUMMER	STANDARD25686	HKLR	S