

Figure 2. Survey Route on August 7th, 2023

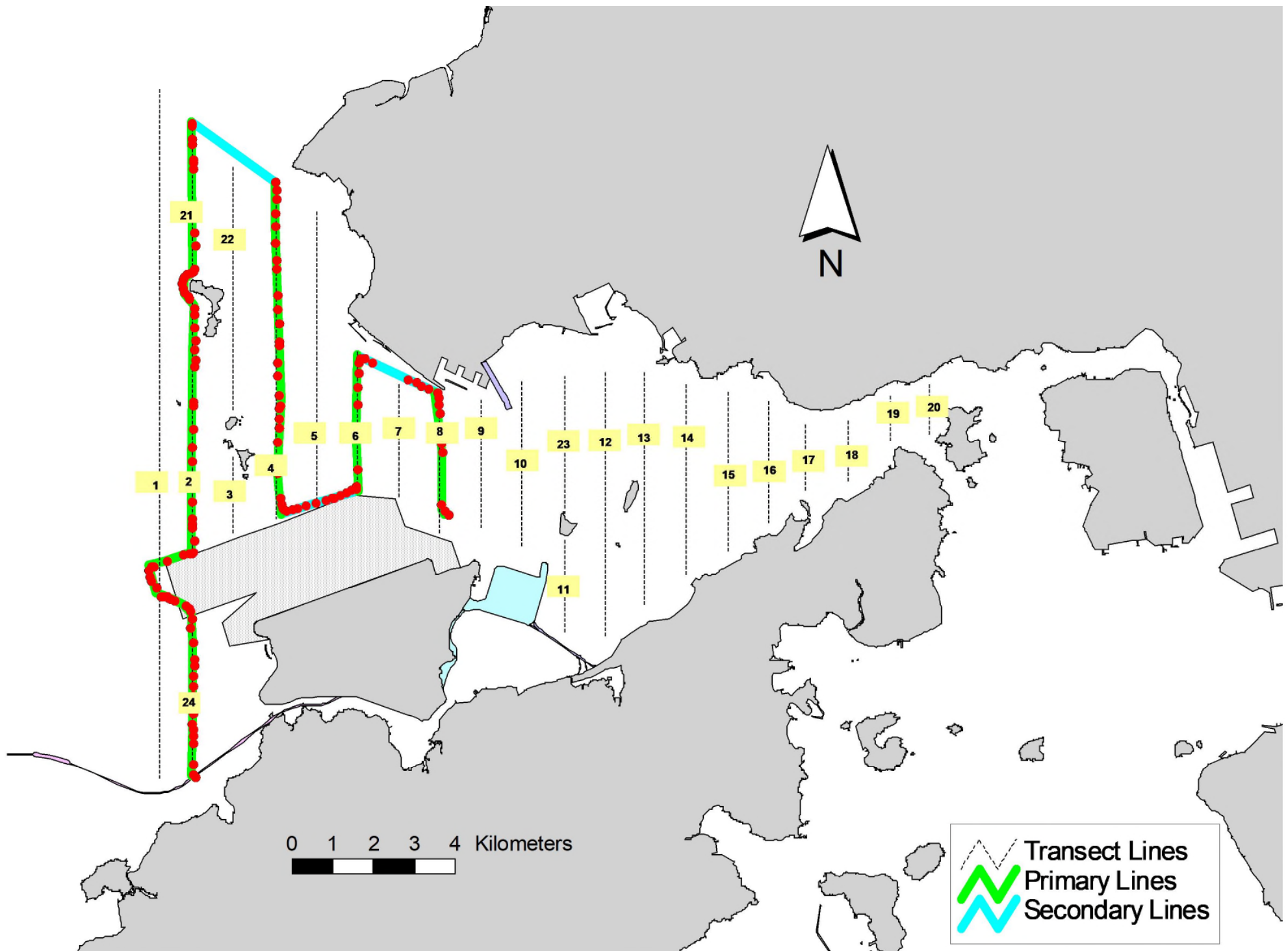


Figure 3. Survey Route on August 11th, 2023

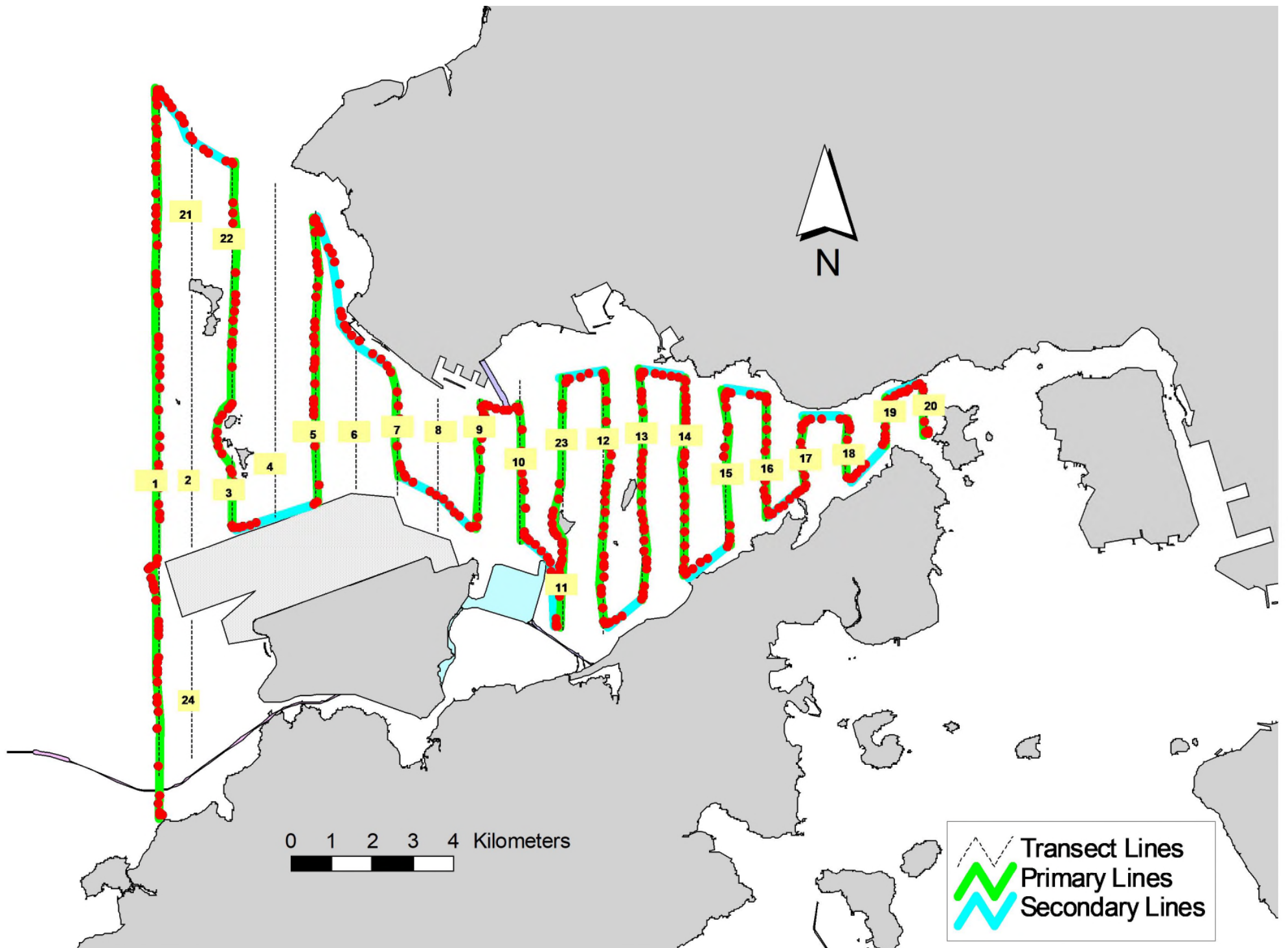


Figure 4. Survey Route on August 14th, 2023

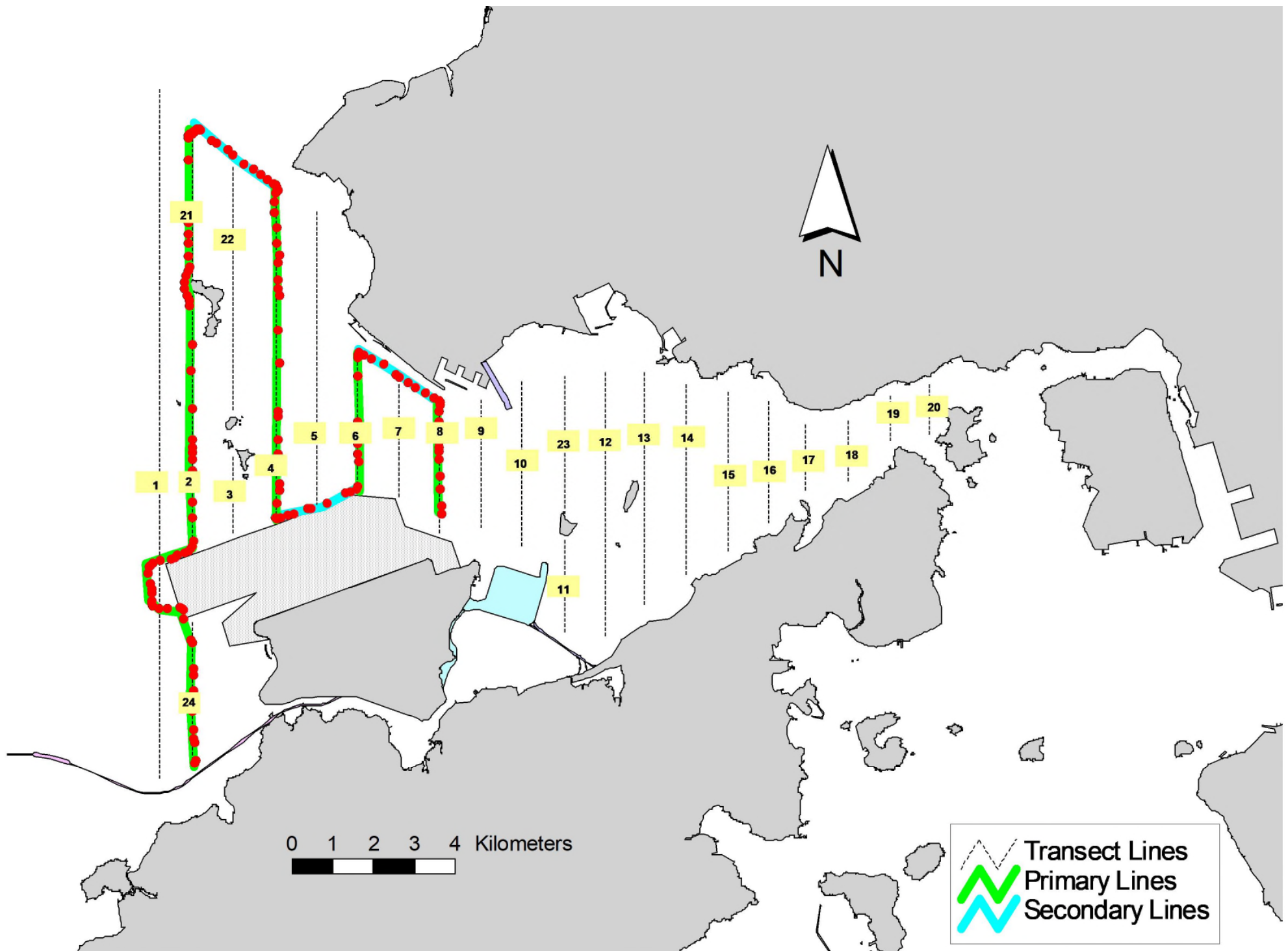


Figure 5. Survey Route on August 24th, 2023

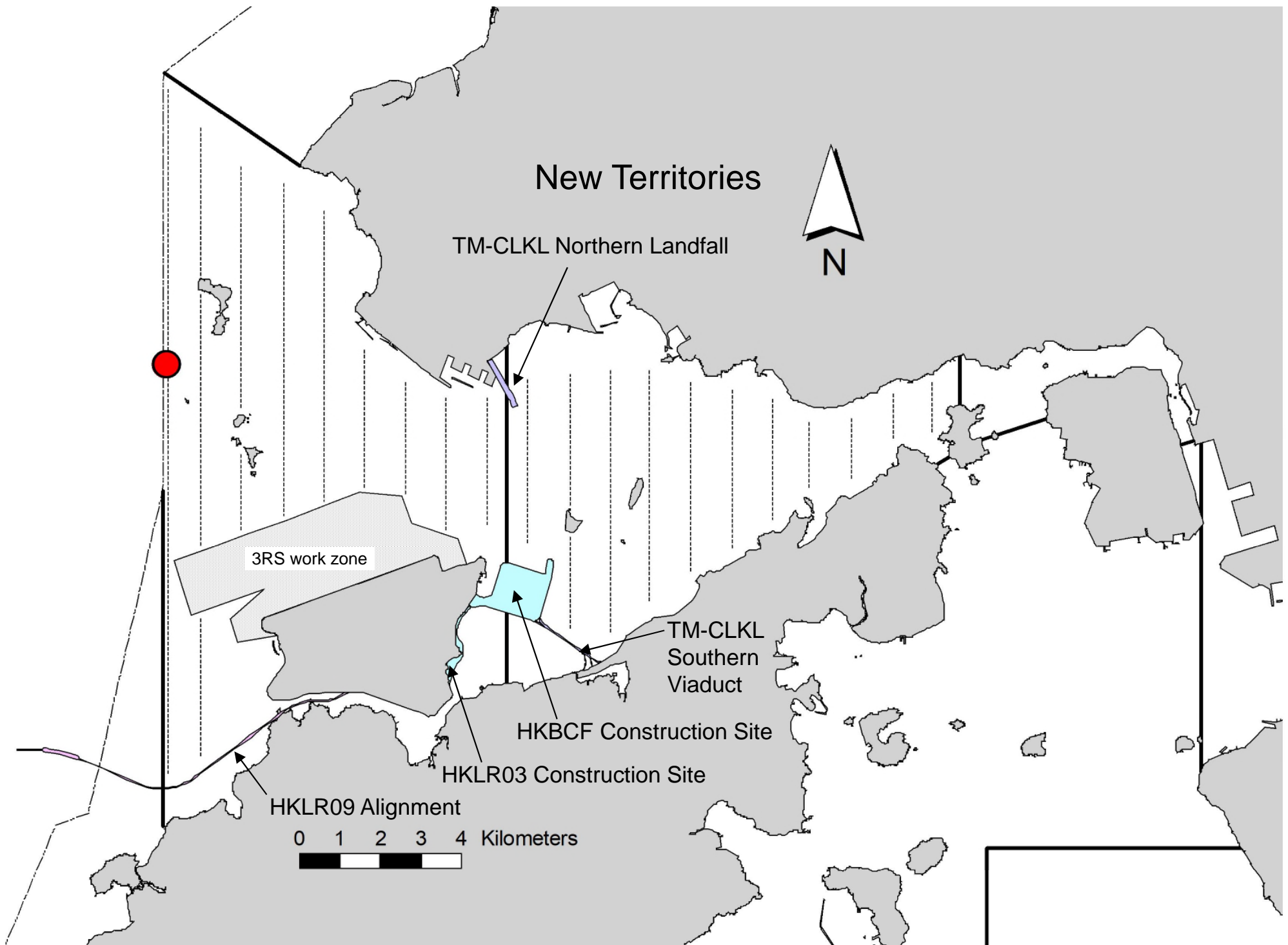


Figure 6. Distribution of Chinese White Dolphin Sightings during August 2023 HKLR03 Monitoring Surveys

Annex I. HKLR03 Survey Effort Database (August 2023)

(Abbreviations: BEAU = Beaufort Sea State; P = Primary Line Effort; S = Secondary Line Effort)

DATE	AREA	BEAU	EFFORT	SEASON	VESSEL	TYPE	P/S
7-Aug-23	NW LANTAU	1	8.30	SUMMER	STANDARD25686	HKLR	P
7-Aug-23	NW LANTAU	2	27.06	SUMMER	STANDARD25686	HKLR	P
7-Aug-23	NW LANTAU	1	2.70	SUMMER	STANDARD25686	HKLR	S
7-Aug-23	NW LANTAU	2	11.34	SUMMER	STANDARD25686	HKLR	S
7-Aug-23	NE LANTAU	2	35.53	SUMMER	STANDARD25686	HKLR	P
7-Aug-23	NE LANTAU	2	13.47	SUMMER	STANDARD25686	HKLR	S
11-Aug-23	NW LANTAU	2	14.25	SUMMER	STANDARD25686	HKLR	P
11-Aug-23	NW LANTAU	3	12.21	SUMMER	STANDARD25686	HKLR	P
11-Aug-23	NW LANTAU	4	0.31	SUMMER	STANDARD25686	HKLR	P
11-Aug-23	NW LANTAU	2	3.10	SUMMER	STANDARD25686	HKLR	S
11-Aug-23	NW LANTAU	3	1.83	SUMMER	STANDARD25686	HKLR	S
11-Aug-23	NW LANTAU	4	2.60	SUMMER	STANDARD25686	HKLR	S
14-Aug-23	NW LANTAU	2	23.38	SUMMER	STANDARD25686	HKLR	P
14-Aug-23	NW LANTAU	3	11.76	SUMMER	STANDARD25686	HKLR	P
14-Aug-23	NW LANTAU	2	10.60	SUMMER	STANDARD25686	HKLR	S
14-Aug-23	NW LANTAU	3	3.26	SUMMER	STANDARD25686	HKLR	S
14-Aug-23	NE LANTAU	1	8.80	SUMMER	STANDARD25686	HKLR	P
14-Aug-23	NE LANTAU	2	23.14	SUMMER	STANDARD25686	HKLR	P
14-Aug-23	NE LANTAU	3	2.89	SUMMER	STANDARD25686	HKLR	P
14-Aug-23	NE LANTAU	1	3.50	SUMMER	STANDARD25686	HKLR	S
14-Aug-23	NE LANTAU	2	7.82	SUMMER	STANDARD25686	HKLR	S
14-Aug-23	NE LANTAU	3	2.05	SUMMER	STANDARD25686	HKLR	S
24-Aug-23	NW LANTAU	2	20.00	SUMMER	STANDARD25686	HKLR	P
24-Aug-23	NW LANTAU	3	6.93	SUMMER	STANDARD25686	HKLR	P
24-Aug-23	NW LANTAU	2	6.92	SUMMER	STANDARD25686	HKLR	S
24-Aug-23	NW LANTAU	3	2.75	SUMMER	STANDARD25686	HKLR	S

Annex II. HKLR03 Chinese White Dolphin Sighting Database (August 2023)

(Abberviations: STG# = Sighting Number; HRD SZ = Dolphin Herd Size; BEAU = Beaufort Sea State; PSD = Perpendicular Distance; BOAT ASSOC. = Fishing Boat Association; P/S: Sighting Made on Primary/Secondary Lines)

DATE	STG #	TIME	HRD SZ	AREA	BEAU	PSD	EFFORT	TYPE	NORTHING	EASTING	SEASON	BOAT ASSOC.	P/S
7-Aug-23	1	1053	1	NW LANTAU	2	138	ON	HKLR	825004	804609	SUMMER	NONE	P

Annex III. Individual dolphins identified during HKLR03 monitoring surveys in August 2023

ID#	DATE	STG#	AREA
NL261	07/08/23	1	NW LANTAU



Annex IV. Photograph of Identified Individual Dolphin in August 2023 (HKLR03)