

Figure 1. Transect Line Layout in Northwest and Northeast Lantau Survey Areas

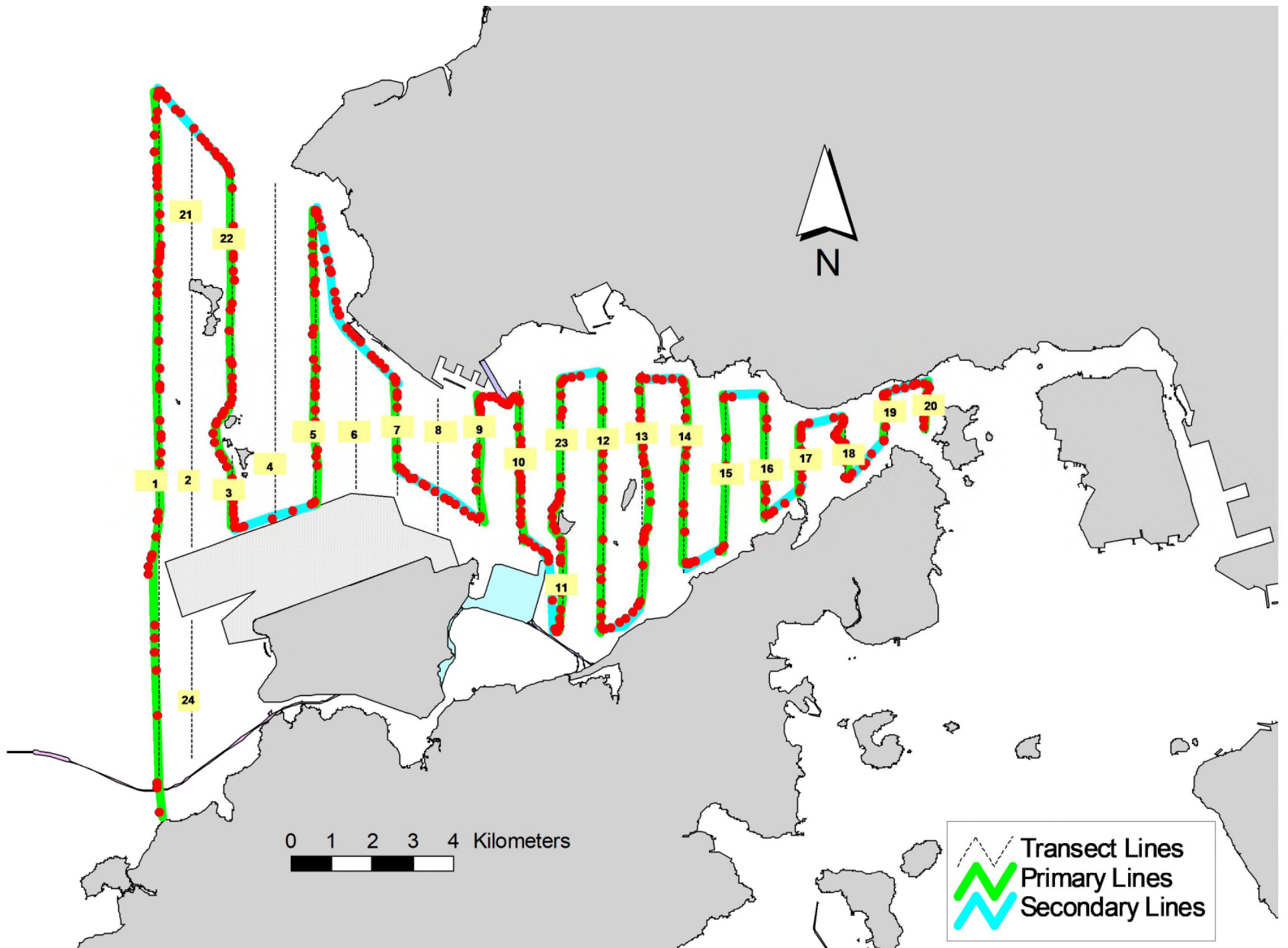


Figure 2. Survey Route on September 5th, 2023

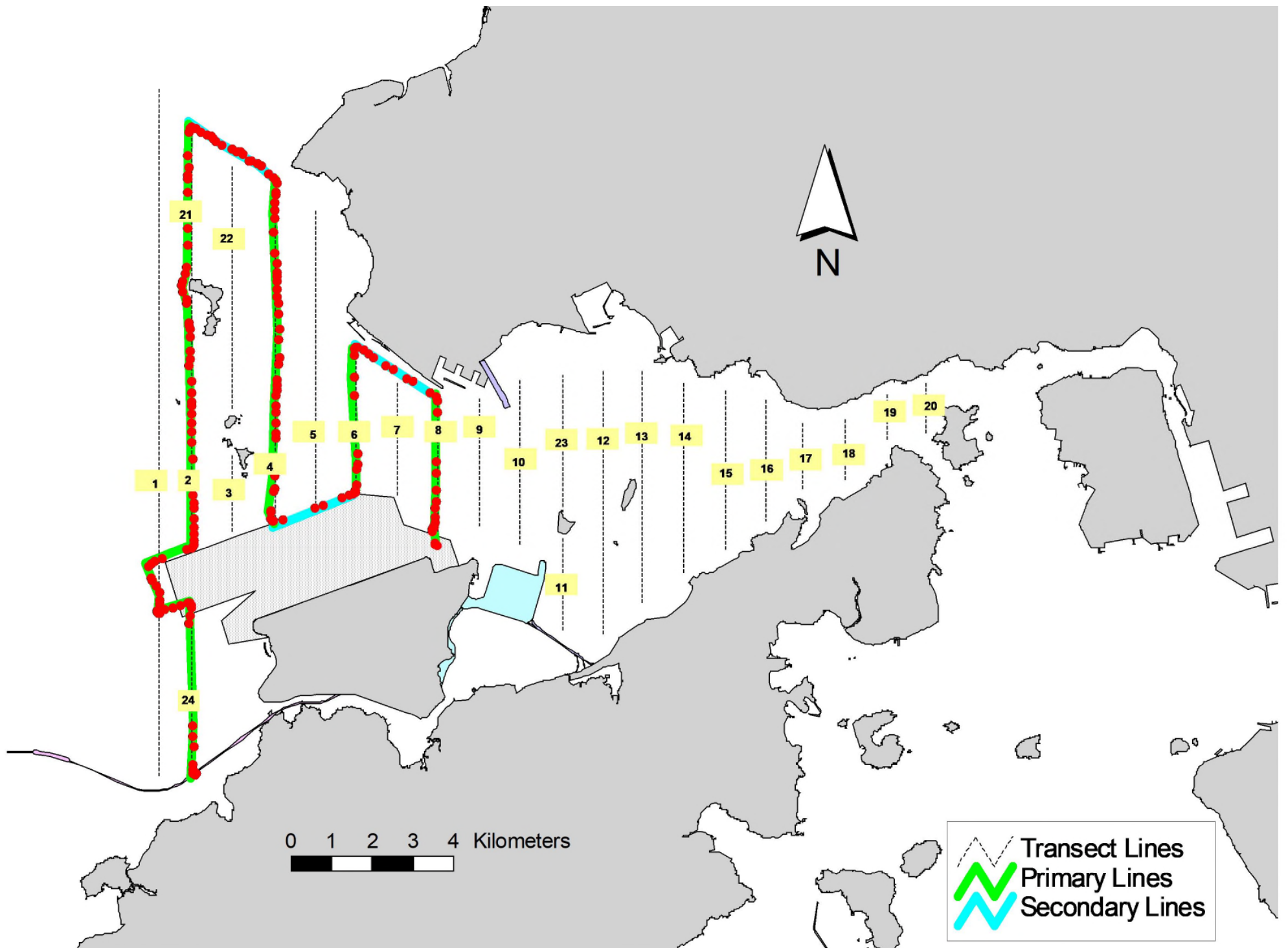


Figure 3. Survey Route on September 11th, 2023

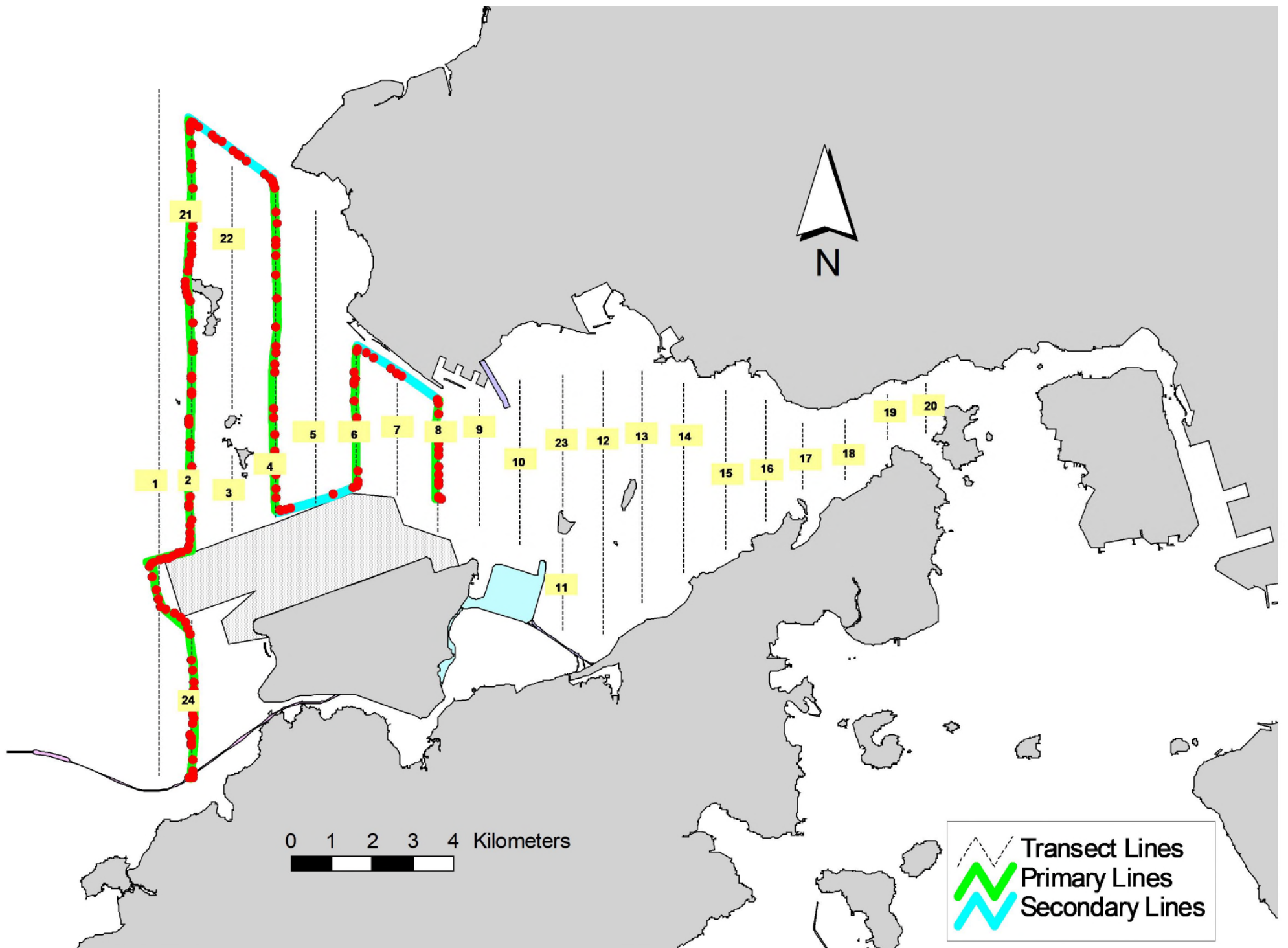


Figure 4. Survey Route on September 19th, 2023

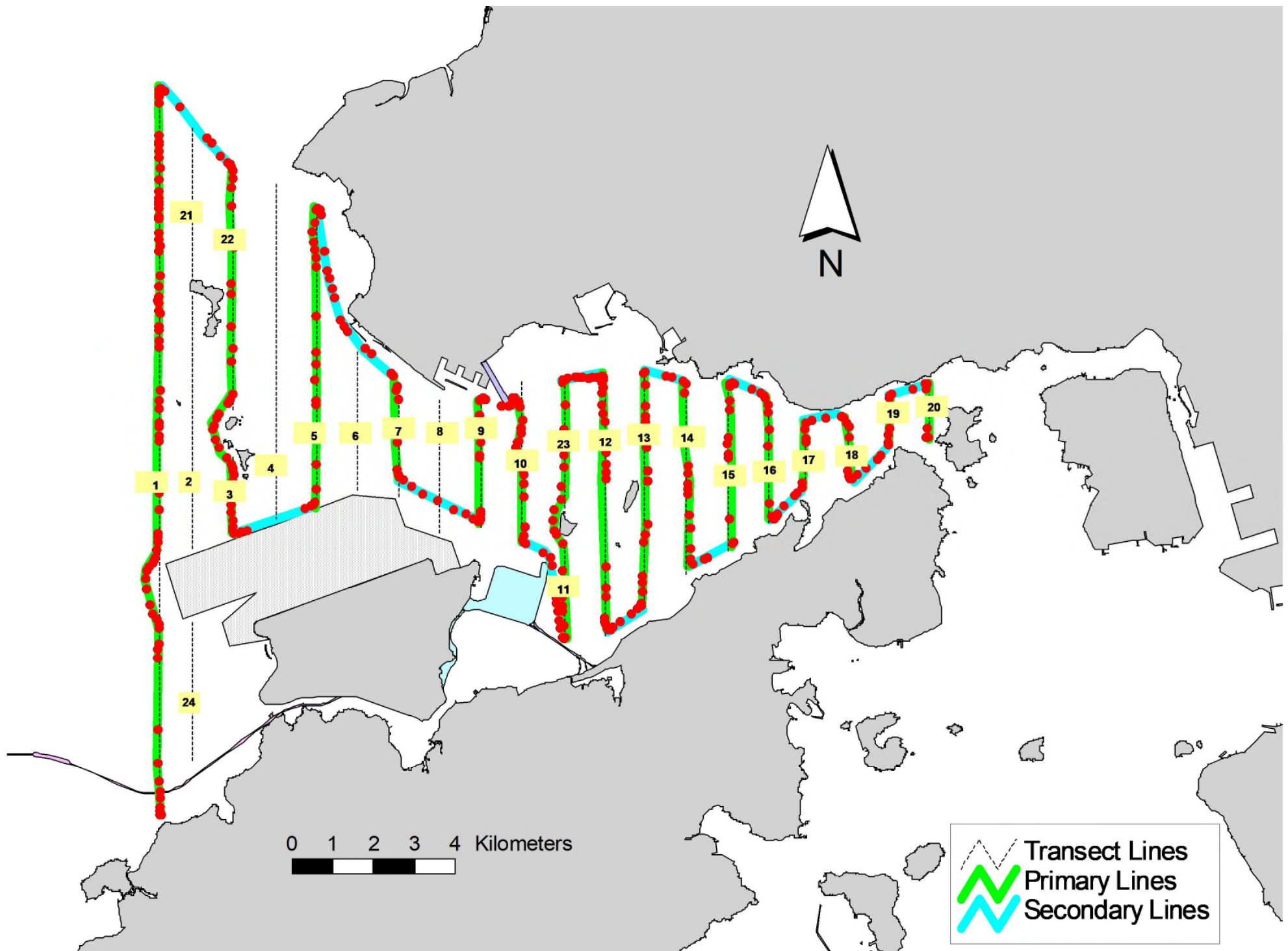


Figure 5. Survey Route on September 26th, 2023

Annex I. HKLR03 Survey Effort Database (September 2023)

(Abbreviations: BEAU = Beaufort Sea State; P = Primary Line Effort; S = Secondary Line Effort)

DATE	AREA	BEAU	EFFORT	SEASON	VESSEL	TYPE	P/S
5-Sep-23	NW LANTAU	2	12.97	AUTUMN	STANDARD36826	HKLR	P
5-Sep-23	NW LANTAU	3	20.99	AUTUMN	STANDARD36826	HKLR	P
5-Sep-23	NW LANTAU	2	7.00	AUTUMN	STANDARD36826	HKLR	S
5-Sep-23	NW LANTAU	3	7.94	AUTUMN	STANDARD36826	HKLR	S
5-Sep-23	NE LANTAU	2	27.42	AUTUMN	STANDARD36826	HKLR	P
5-Sep-23	NE LANTAU	3	5.68	AUTUMN	STANDARD36826	HKLR	P
5-Sep-23	NE LANTAU	2	15.40	AUTUMN	STANDARD36826	HKLR	S
11-Sep-23	NW LANTAU	2	17.00	AUTUMN	STANDARD25686	HKLR	P
11-Sep-23	NW LANTAU	3	11.47	AUTUMN	STANDARD25686	HKLR	P
11-Sep-23	NW LANTAU	2	8.08	AUTUMN	STANDARD25686	HKLR	S
11-Sep-23	NW LANTAU	3	2.35	AUTUMN	STANDARD25686	HKLR	S
19-Sep-23	NW LANTAU	2	25.91	AUTUMN	STANDARD36826	HKLR	P
19-Sep-23	NW LANTAU	2	10.49	AUTUMN	STANDARD36826	HKLR	S
26-Sep-23	NW LANTAU	2	10.90	AUTUMN	STANDARD36826	HKLR	P
26-Sep-23	NW LANTAU	3	23.56	AUTUMN	STANDARD36826	HKLR	P
26-Sep-23	NW LANTAU	2	7.10	AUTUMN	STANDARD36826	HKLR	S
26-Sep-23	NW LANTAU	3	7.94	AUTUMN	STANDARD36826	HKLR	S
26-Sep-23	NE LANTAU	2	11.70	AUTUMN	STANDARD36826	HKLR	P
26-Sep-23	NE LANTAU	3	23.69	AUTUMN	STANDARD36826	HKLR	P
26-Sep-23	NE LANTAU	2	8.60	AUTUMN	STANDARD36826	HKLR	S
26-Sep-23	NE LANTAU	3	5.11	AUTUMN	STANDARD36826	HKLR	S