

Figure 1. Transect Line Layout in Northwest and Northeast Lantau Survey Areas

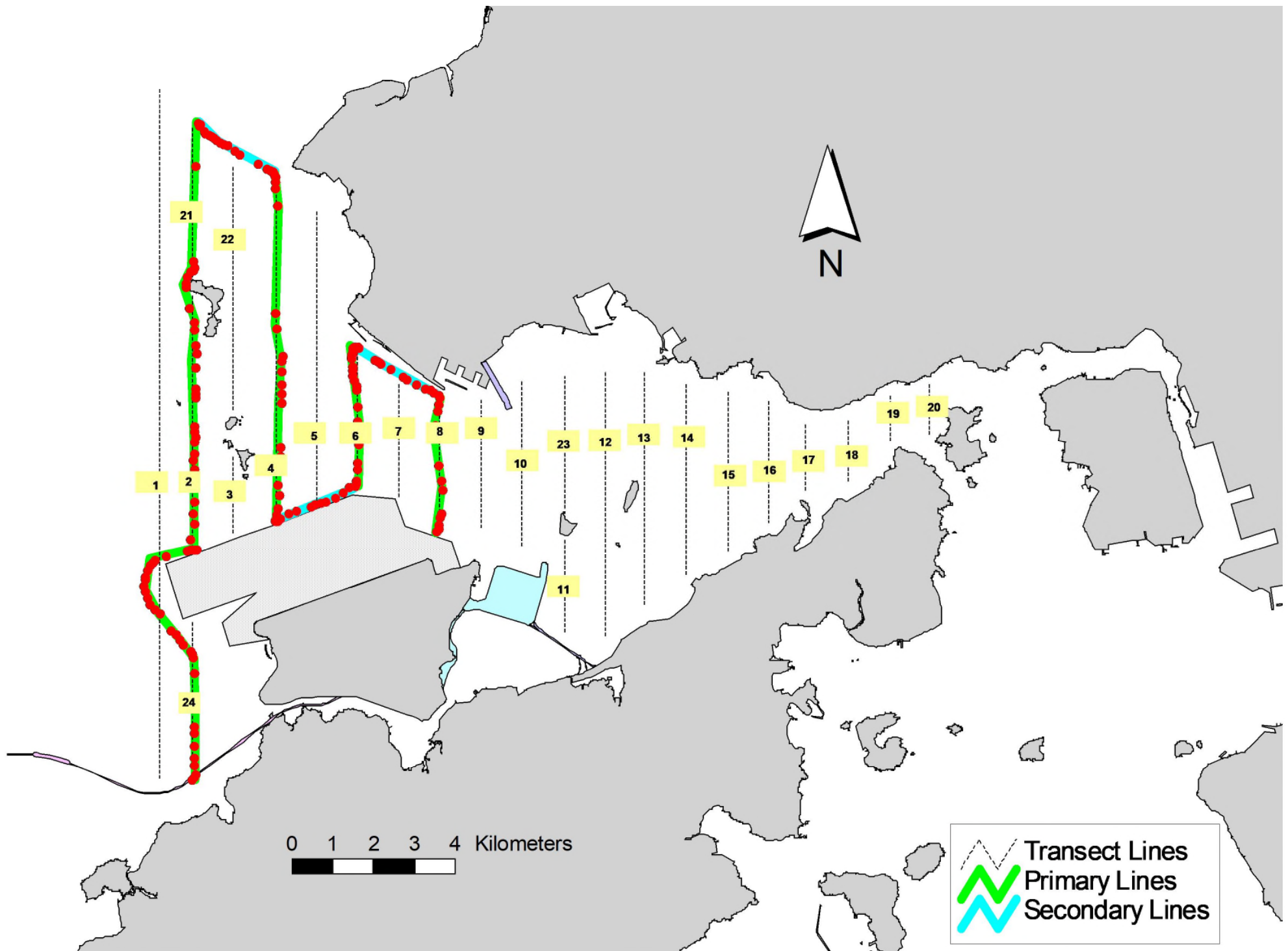


Figure 3. Survey Route on October 19th, 2023

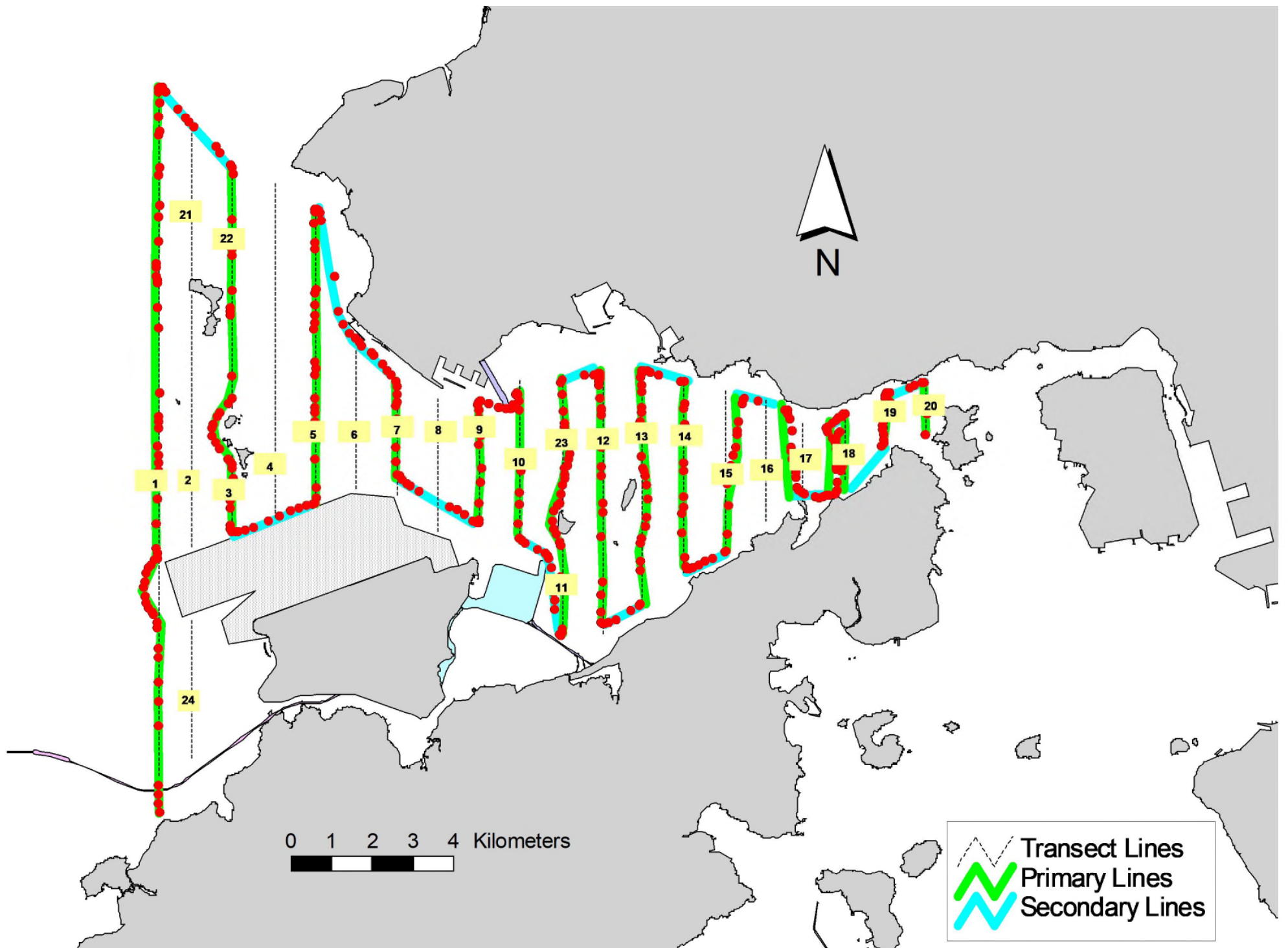


Figure 4. Survey Route on October 24th, 2023

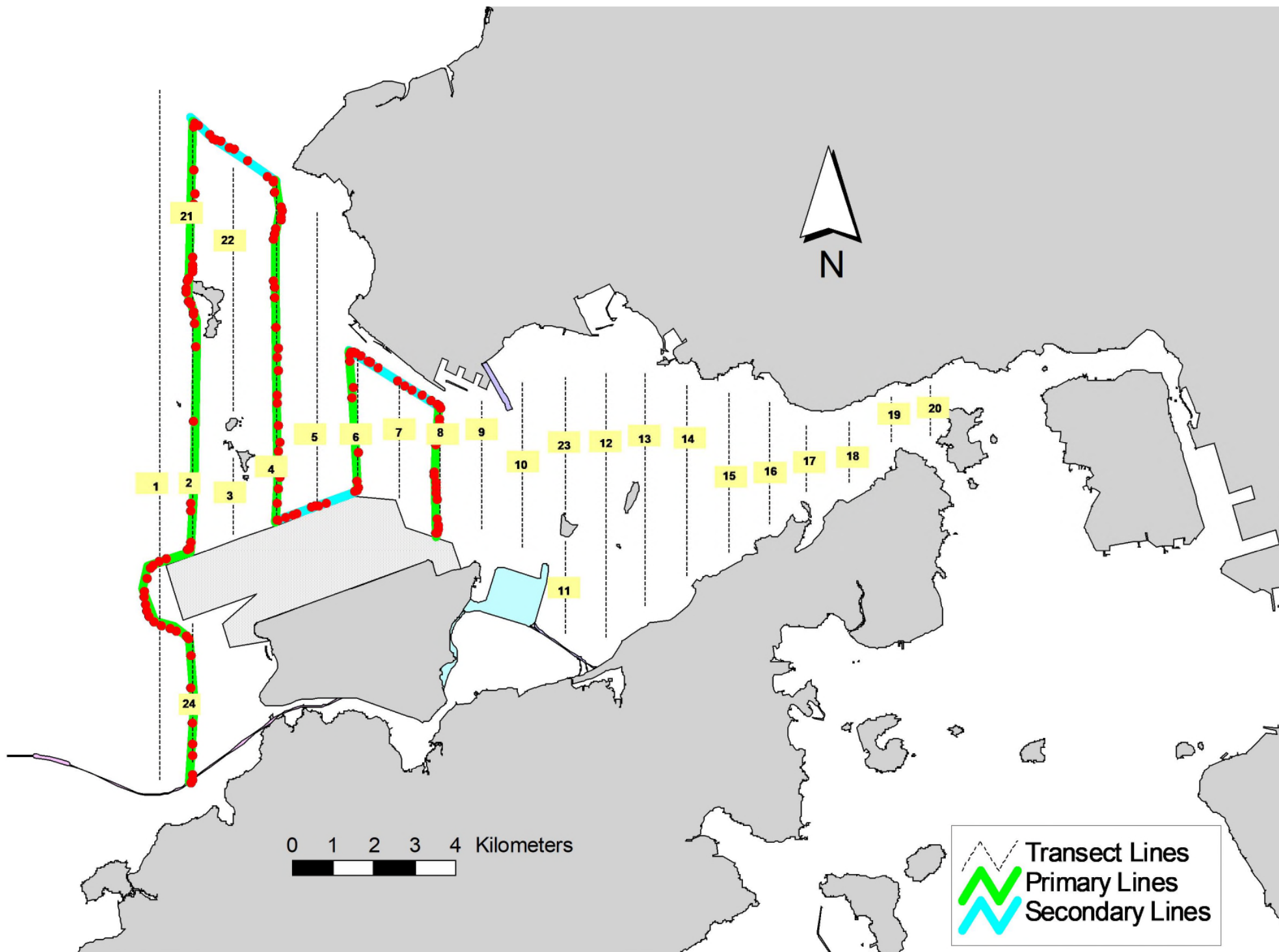


Figure 5. Survey Route on October 25th, 2023

Appendix I. HKLR03 Survey Effort Database (October 2023)

(Abbreviations: BEAU = Beaufort Sea State; P = Primary Line Effort; S = Secondary Line Effort)

DATE	AREA	BEAU	EFFORT	SEASON	VESSEL	TYPE	P/S
5-Oct-23	NW LANTAU	3	32.51	AUTUMN	STANDARD25686	HKLR	P
5-Oct-23	NW LANTAU	4	2.28	AUTUMN	STANDARD25686	HKLR	P
5-Oct-23	NW LANTAU	3	15.21	AUTUMN	STANDARD25686	HKLR	S
5-Oct-23	NE LANTAU	2	16.04	AUTUMN	STANDARD25686	HKLR	P
5-Oct-23	NE LANTAU	3	20.27	AUTUMN	STANDARD25686	HKLR	P
5-Oct-23	NE LANTAU	2	6.90	AUTUMN	STANDARD25686	HKLR	S
5-Oct-23	NE LANTAU	3	6.59	AUTUMN	STANDARD25686	HKLR	S
19-Oct-23	NW LANTAU	3	25.88	AUTUMN	STANDARD25686	HKLR	P
19-Oct-23	NW LANTAU	3	12.52	AUTUMN	STANDARD25686	HKLR	S
24-Oct-23	NE LANTAU	2	34.99	AUTUMN	STANDARD36826	HKLR	P
24-Oct-23	NE LANTAU	2	13.07	AUTUMN	STANDARD36826	HKLR	S
24-Oct-23	NW LANTAU	1	0.70	AUTUMN	STANDARD36826	HKLR	P
24-Oct-23	NW LANTAU	2	33.63	AUTUMN	STANDARD36826	HKLR	P
24-Oct-23	NW LANTAU	2	15.27	AUTUMN	STANDARD36826	HKLR	S
25-Oct-23	NW LANTAU	2	14.92	AUTUMN	STANDARD25686	HKLR	P
25-Oct-23	NW LANTAU	3	11.76	AUTUMN	STANDARD25686	HKLR	P
25-Oct-23	NW LANTAU	2	10.22	AUTUMN	STANDARD25686	HKLR	S
25-Oct-23	NW LANTAU	3	0.90	AUTUMN	STANDARD25686	HKLR	S