

Figure 1. Transect Line Layout in Northwest and Northeast Lantau Survey Areas

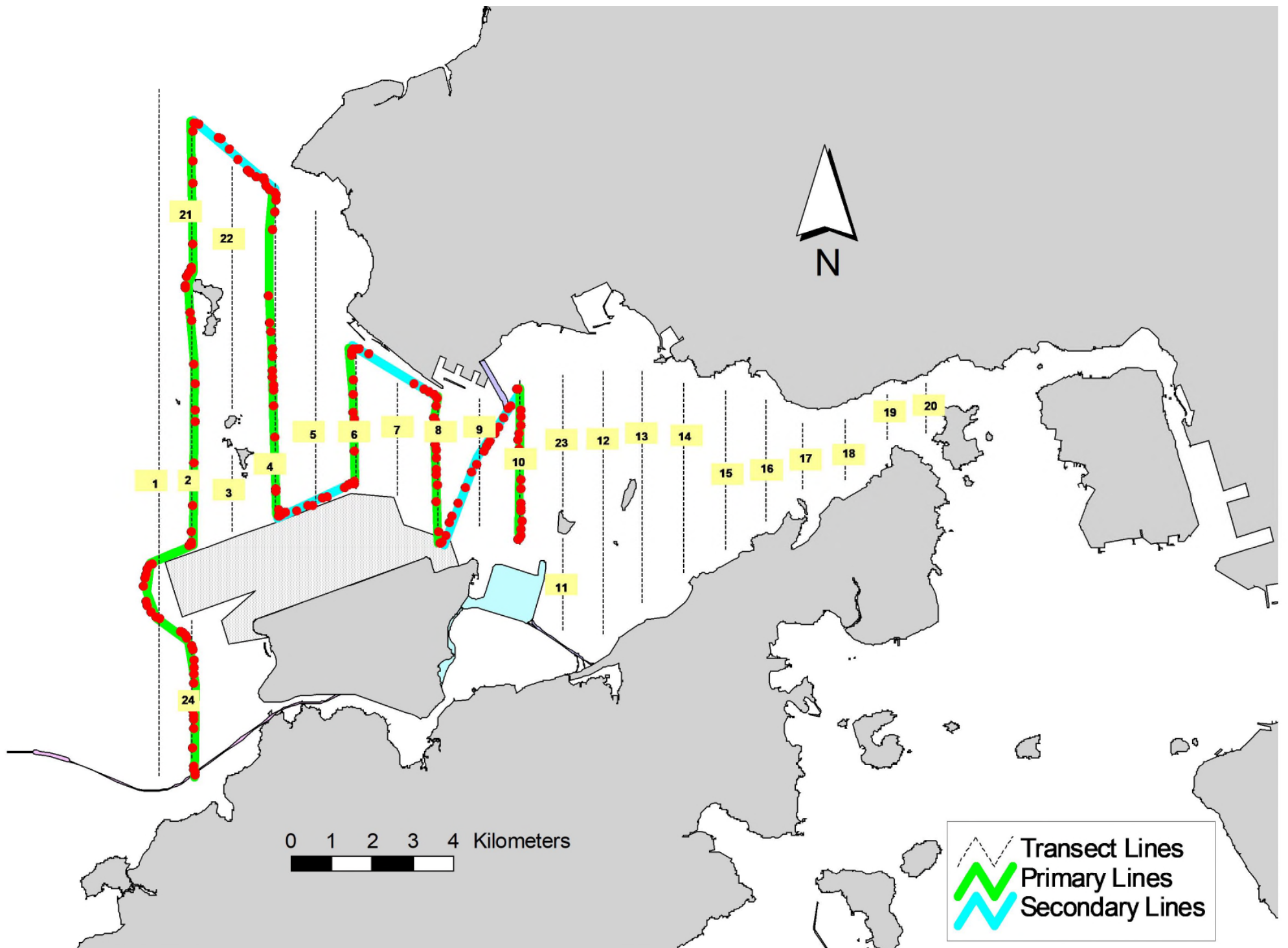


Figure 3. Survey Route on November 13th, 2023

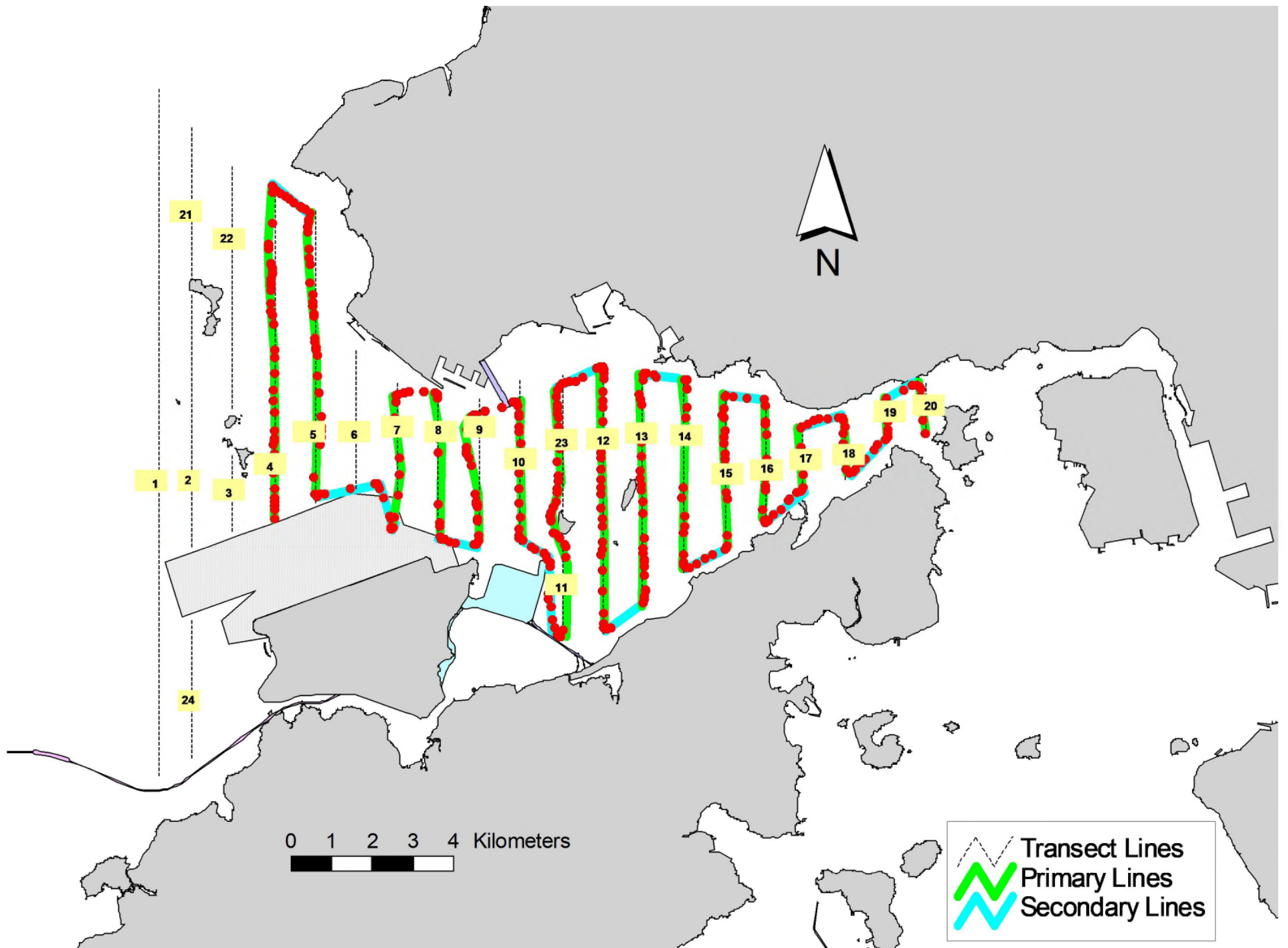


Figure 4. Survey Route on November 16th, 2023

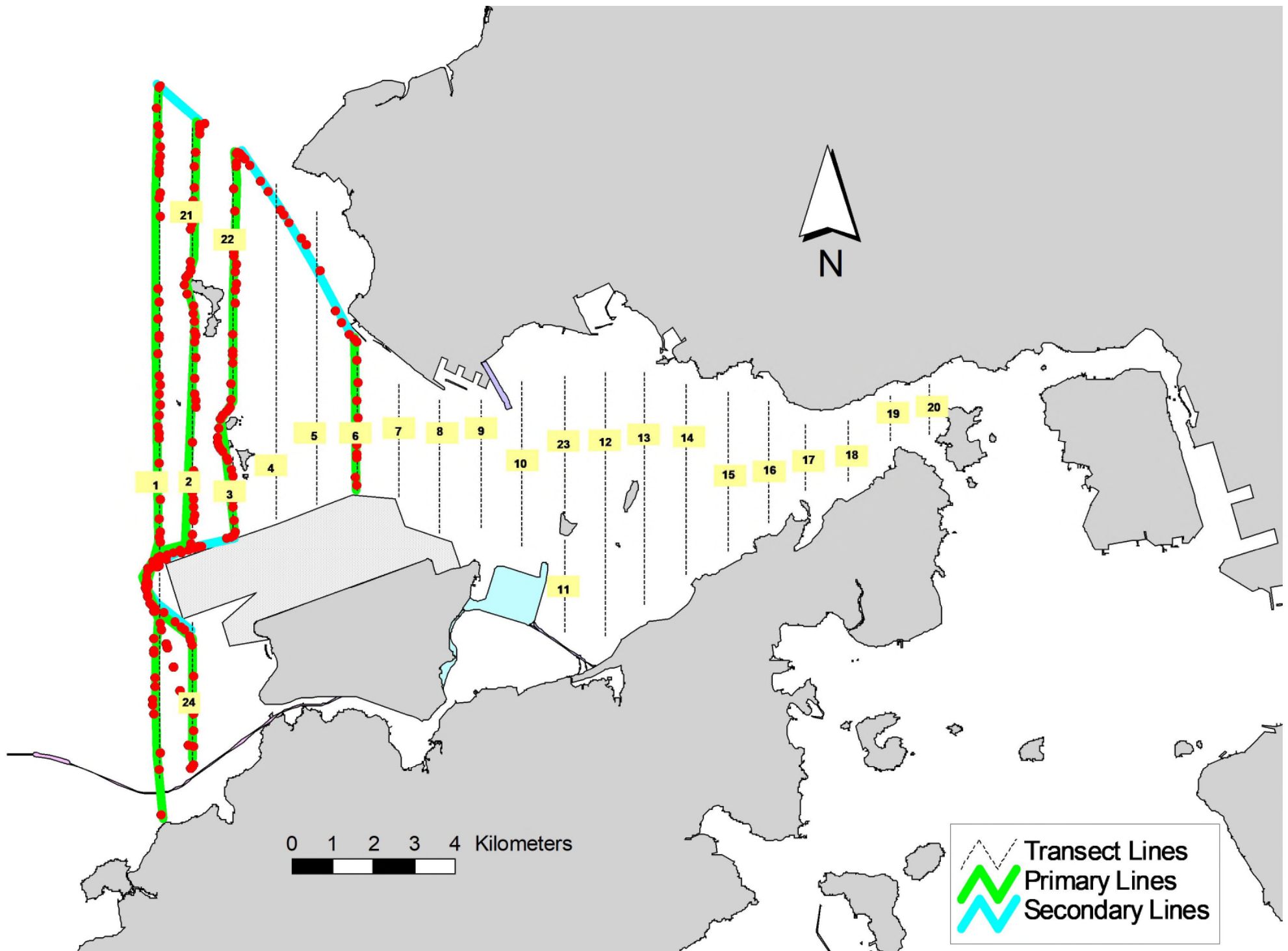


Figure 5. Survey Route on November 20th, 2023

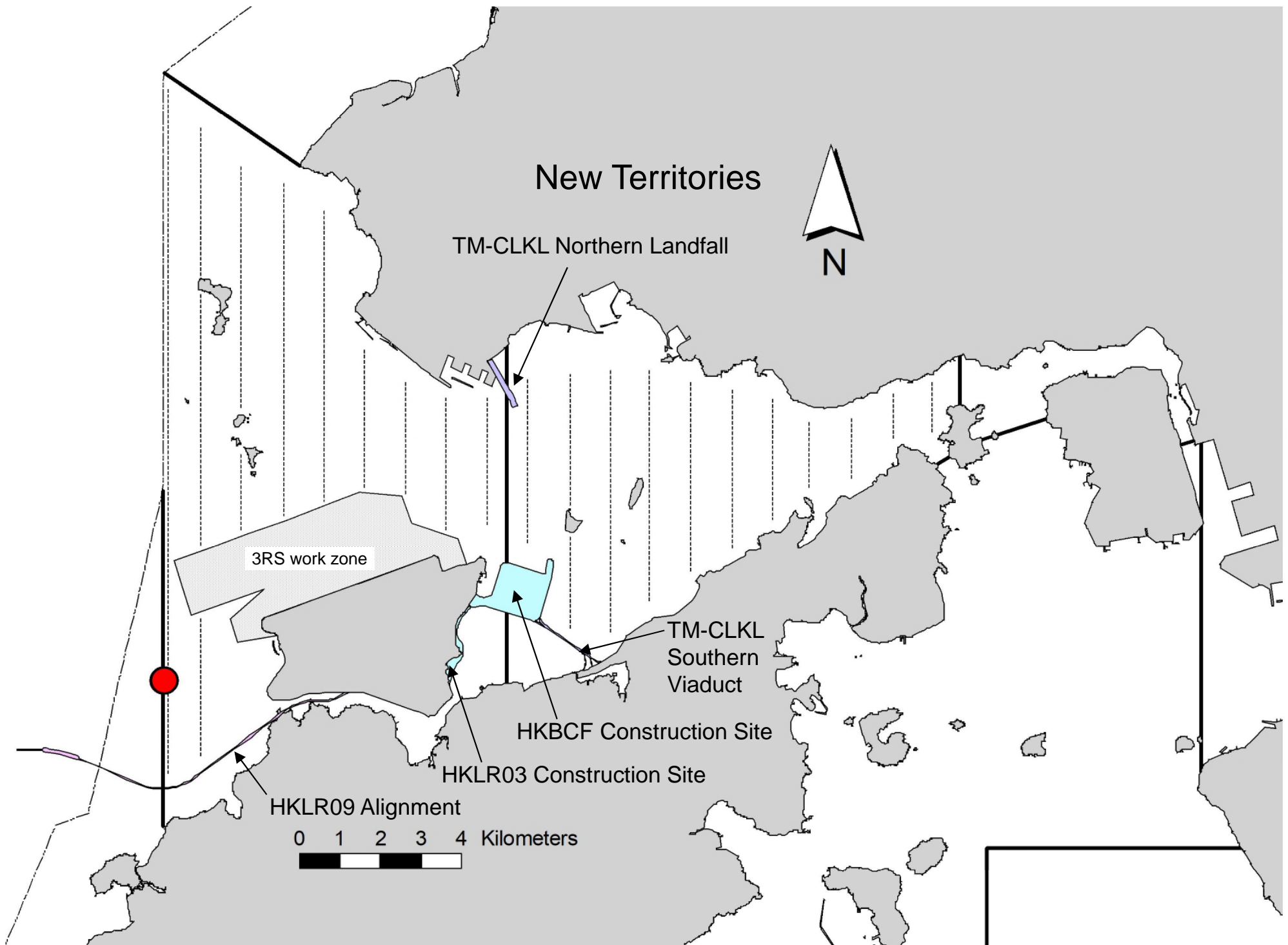


Figure 6. Distribution of Chinese White Dolphin Sightings during November 2023 HKLR03 Monitoring Surveys

Annex I. HKLR03 Survey Effort Database (November 2023)

(Abbreviations: BEAU = Beaufort Sea State; P = Primary Line Effort; S = Secondary Line Effort)

DATE	AREA	BEAU	EFFORT	SEASON	VESSEL	TYPE	P/S
1-Nov-23	NW LANTAU	2	26.59	AUTUMN	STANDARD25686	HKLR	P
1-Nov-23	NW LANTAU	3	8.67	AUTUMN	STANDARD25686	HKLR	P
1-Nov-23	NW LANTAU	2	14.53	AUTUMN	STANDARD25686	HKLR	S
1-Nov-23	NE LANTAU	2	32.90	AUTUMN	STANDARD25686	HKLR	P
1-Nov-23	NE LANTAU	2	12.10	AUTUMN	STANDARD25686	HKLR	S
13-Nov-23	NE LANTAU	3	3.51	AUTUMN	STANDARD25686	HKLR	P
13-Nov-23	NW LANTAU	2	8.22	AUTUMN	STANDARD25686	HKLR	P
13-Nov-23	NW LANTAU	3	18.14	AUTUMN	STANDARD25686	HKLR	P
13-Nov-23	NW LANTAU	2	2.31	AUTUMN	STANDARD25686	HKLR	S
13-Nov-23	NW LANTAU	3	8.93	AUTUMN	STANDARD25686	HKLR	S
16-Nov-23	NW LANTAU	3	6.80	AUTUMN	STANDARD25686	HKLR	P
16-Nov-23	NW LANTAU	4	16.10	AUTUMN	STANDARD25686	HKLR	P
16-Nov-23	NW LANTAU	5	1.54	AUTUMN	STANDARD25686	HKLR	P
16-Nov-23	NW LANTAU	3	1.10	AUTUMN	STANDARD25686	HKLR	S
16-Nov-23	NW LANTAU	4	4.00	AUTUMN	STANDARD25686	HKLR	S
16-Nov-23	NW LANTAU	5	0.36	AUTUMN	STANDARD25686	HKLR	S
16-Nov-23	NE LANTAU	2	5.10	AUTUMN	STANDARD25686	HKLR	P
16-Nov-23	NE LANTAU	3	28.24	AUTUMN	STANDARD25686	HKLR	P
16-Nov-23	NE LANTAU	4	1.76	AUTUMN	STANDARD25686	HKLR	P
16-Nov-23	NE LANTAU	2	1.90	AUTUMN	STANDARD25686	HKLR	S
16-Nov-23	NE LANTAU	3	10.83	AUTUMN	STANDARD25686	HKLR	S
16-Nov-23	NE LANTAU	4	1.17	AUTUMN	STANDARD25686	HKLR	S
20-Nov-23	NW LANTAU	2	31.51	AUTUMN	STANDARD25686	HKLR	P
20-Nov-23	NW LANTAU	3	7.57	AUTUMN	STANDARD25686	HKLR	P
20-Nov-23	NW LANTAU	2	12.82	AUTUMN	STANDARD25686	HKLR	S

Annex II. HKLR03 Chinese White Dolphin Sighting Database (November 2023)

(Abberviations: STG# = Sighting Number; HRD SZ = Dolphin Herd Size; BEAU = Beaufort Sea State; PSD = Perpendicular Distance; BOAT ASSOC. = Fishing Boat Association; P/S: Sighting Made on Primary/Secondary Lines)

DATE	STG #	TIME	HRD SZ	AREA	BEAU	PSD	EFFORT	TYPE	NORTHING	EASTING	SEASON	BOAT ASSOC.	P/S
1-Nov-23	1	1026	6	NW LANTAU	2	272	ON	HKLR	817662	804542	AUTUMN	NONE	P

Annex III. Individual dolphins identified during HKLR03 monitoring surveys in November 2023

ID#	DATE	STG#	AREA
WL28	01/11/23	1	NW LANTAU
WL284	01/11/23	1	NW LANTAU
WL304	01/11/23	1	NW LANTAU
WL321	01/11/23	1	NW LANTAU
WL326	01/11/23	1	NW LANTAU



Annex IV. Photograph of Identified Individual Dolphin in November 2023 (HKLR03)