

Figure 1. Transect Line Layout in Northwest and Northeast Lantau Survey Areas

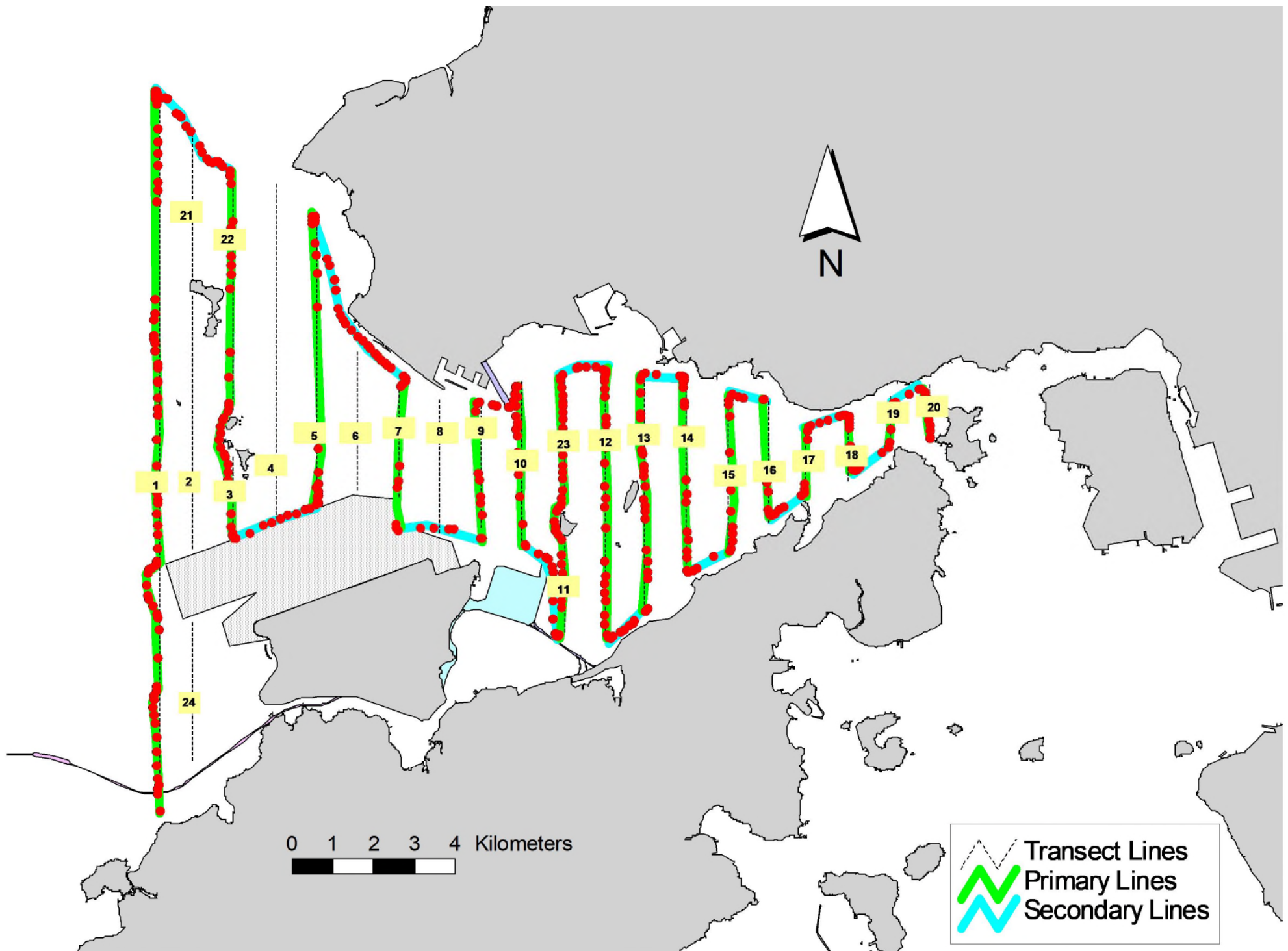


Figure 2. Survey Route on December 4th, 2023

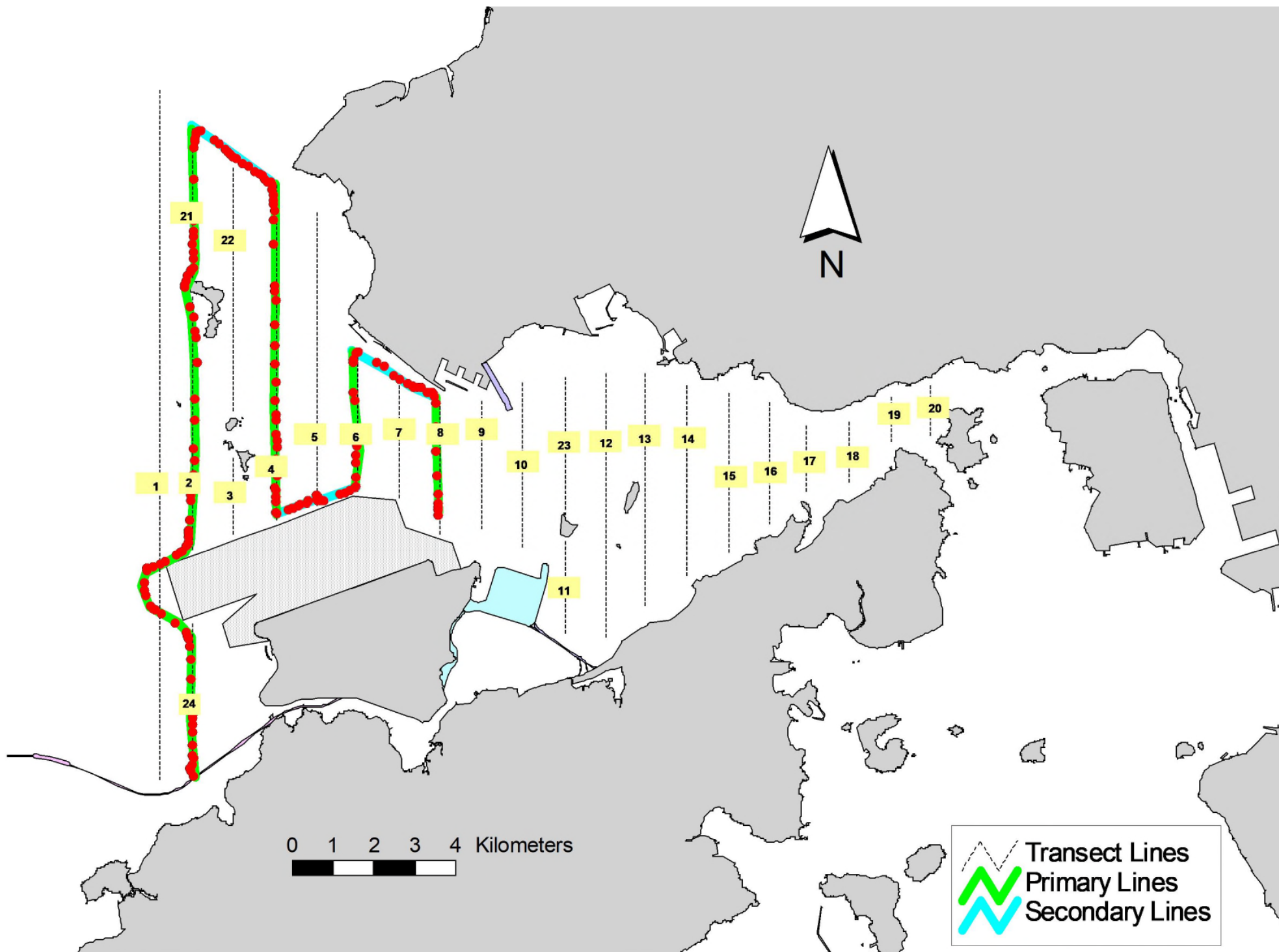


Figure 3. Survey Route on December 6th, 2023

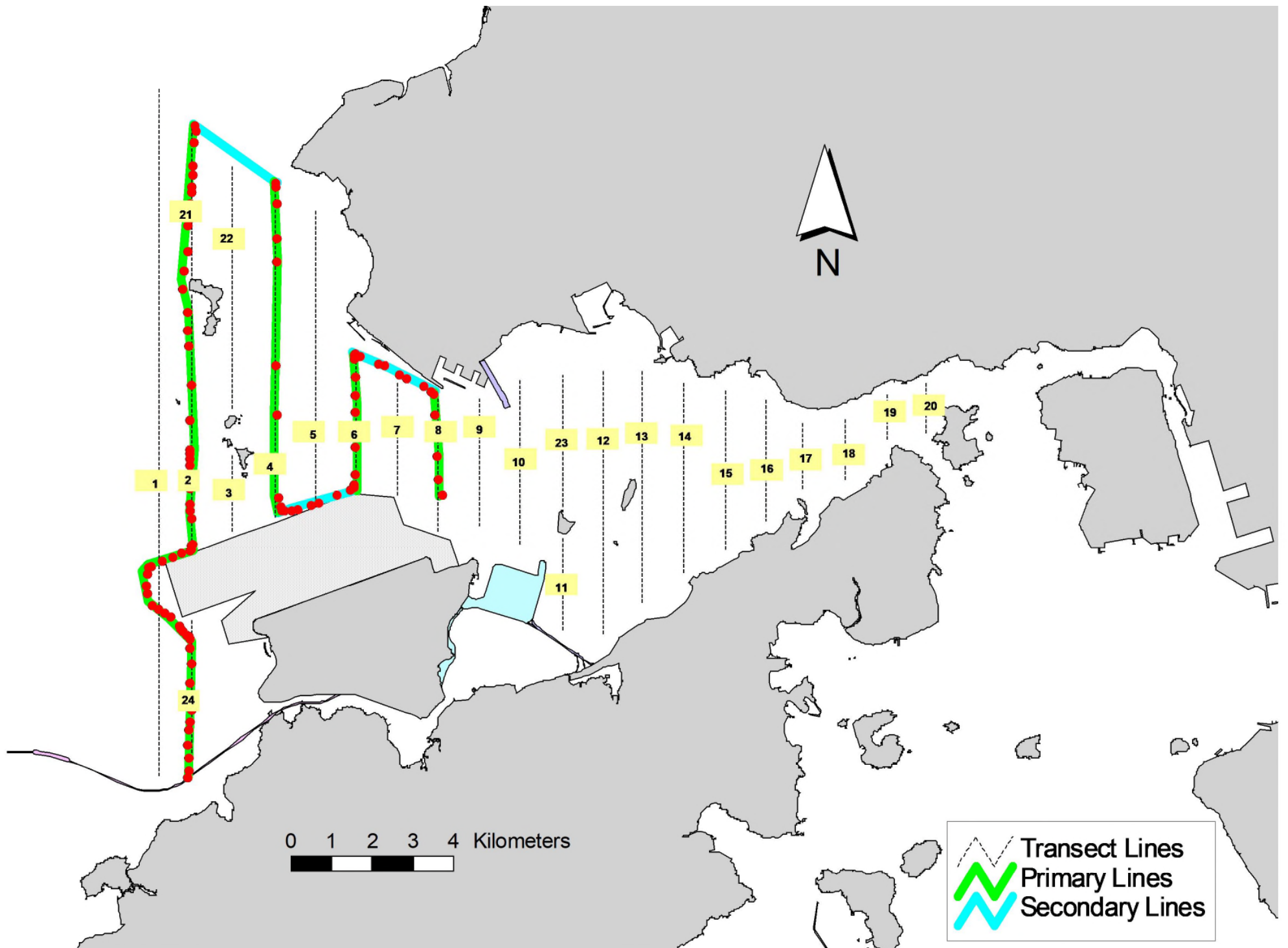


Figure 4. Survey Route on December 8th, 2023

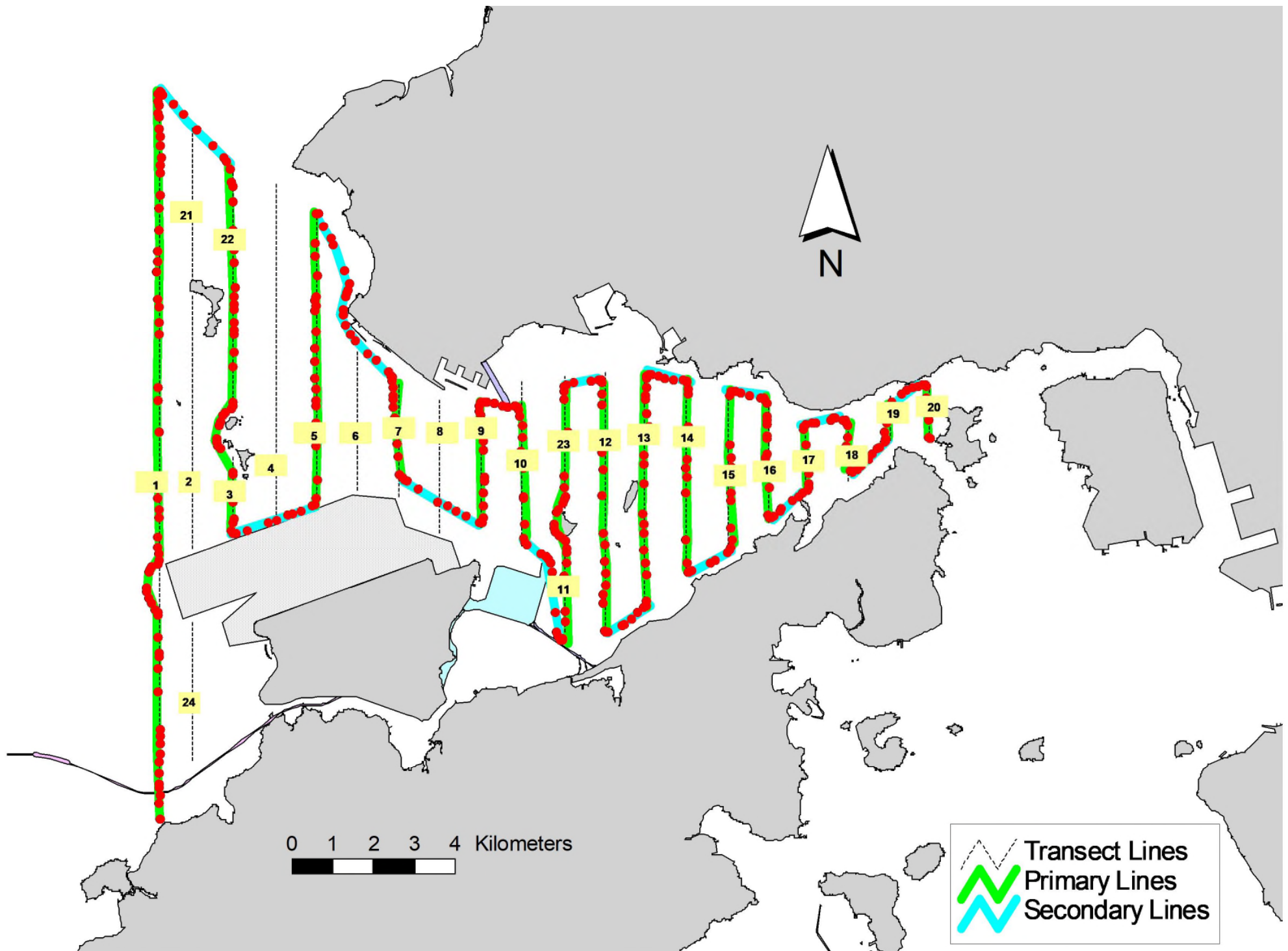


Figure 5. Survey Route on December 11th, 2023

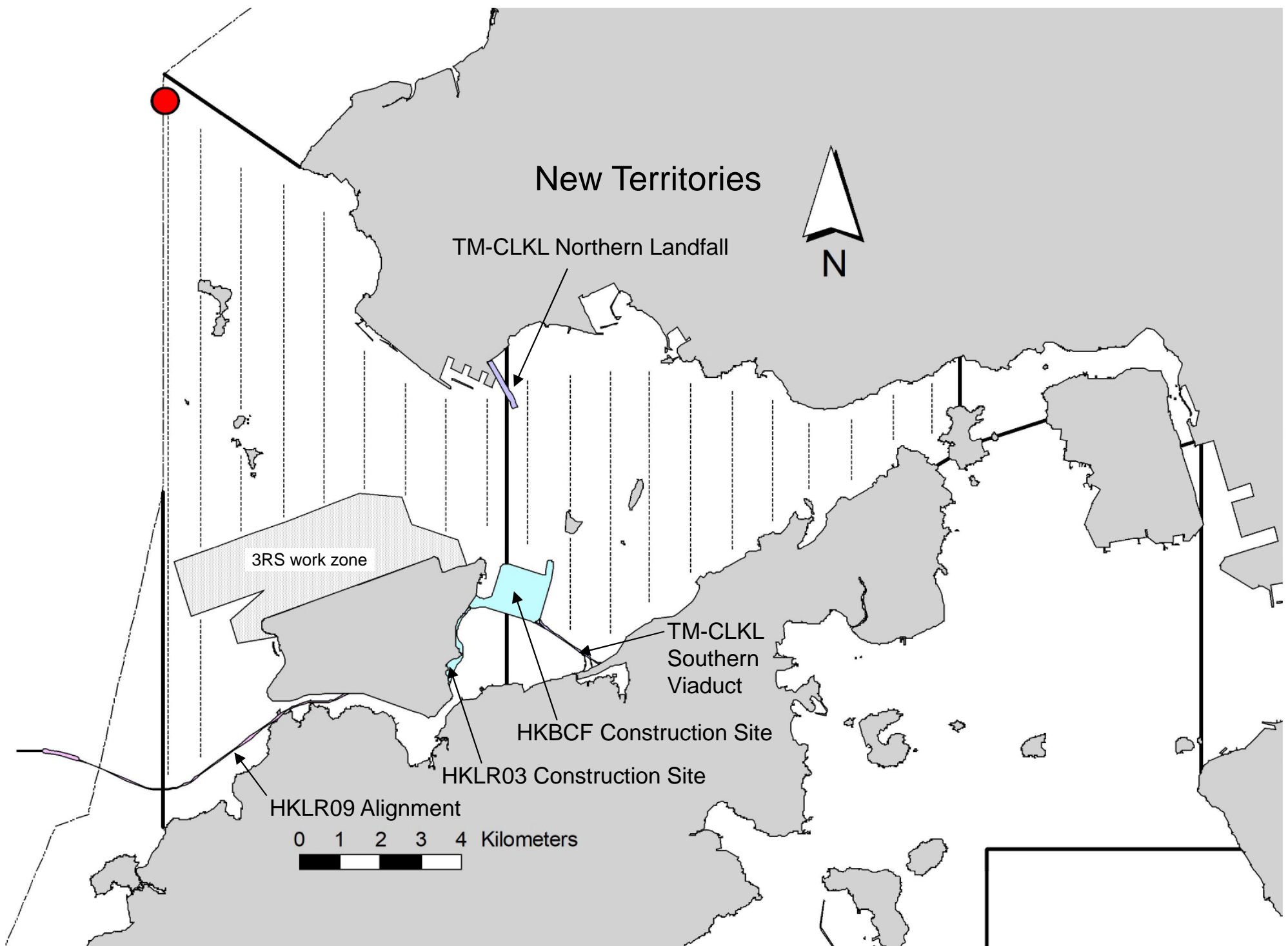


Figure 6. Distribution of Chinese White Dolphin Sightings during December 2023 HKLR03 Monitoring Surveys

Annex I. HKLR03 Survey Effort Database (December 2023)

(Abbreviations: BEAU = Beaufort Sea State; P = Primary Line Effort; S = Secondary Line Effort)

DATE	AREA	BEAU	EFFORT	SEASON	VESSEL	TYPE	P/S
4-Dec-23	NW LANTAU	2	20.93	WINTER	STANDARD25686	HKLR	P
4-Dec-23	NW LANTAU	3	14.90	WINTER	STANDARD25686	HKLR	P
4-Dec-23	NW LANTAU	2	8.17	WINTER	STANDARD25686	HKLR	S
4-Dec-23	NW LANTAU	3	6.70	WINTER	STANDARD25686	HKLR	S
4-Dec-23	NE LANTAU	2	17.36	WINTER	STANDARD25686	HKLR	P
4-Dec-23	NE LANTAU	3	19.44	WINTER	STANDARD25686	HKLR	P
4-Dec-23	NE LANTAU	2	4.00	WINTER	STANDARD25686	HKLR	S
4-Dec-23	NE LANTAU	3	8.50	WINTER	STANDARD25686	HKLR	S
6-Dec-23	NW LANTAU	3	26.13	WINTER	STANDARD25686	HKLR	P
6-Dec-23	NW LANTAU	3	10.57	WINTER	STANDARD25686	HKLR	S
8-Dec-23	NW LANTAU	2	25.03	WINTER	STANDARD25686	HKLR	P
8-Dec-23	NW LANTAU	2	8.57	WINTER	STANDARD25686	HKLR	S
11-Dec-23	NW LANTAU	2	34.16	WINTER	STANDARD25686	HKLR	P
11-Dec-23	NW LANTAU	2	14.94	WINTER	STANDARD25686	HKLR	S
11-Dec-23	NE LANTAU	2	34.99	WINTER	STANDARD25686	HKLR	P
11-Dec-23	NE LANTAU	2	13.51	WINTER	STANDARD25686	HKLR	S

Annex II. HKLR03 Chinese White Dolphin Sighting Database (December 2023)

(Abberviations: STG# = Sighting Number; HRD SZ = Dolphin Herd Size; BEAU = Beaufort Sea State; PSD = Perpendicular Distance; BOAT ASSOC. = Fishing Boat Association; P/S: Sighting Made on Primary/Secondary Lines)

DATE	STG #	TIME	HRD SZ	AREA	BEAU	PSD	EFFORT	TYPE	NORTHING	EASTING	SEASON	BOAT ASSOC.	P/S
4-Dec-23	1	1115	2	NW LANTAU	2	1380	ON	HKLR	831161	804581	WINTER	NONE	P