

Figure 1. Transect Line Layout in Northwest and Northeast Lantau Survey Areas

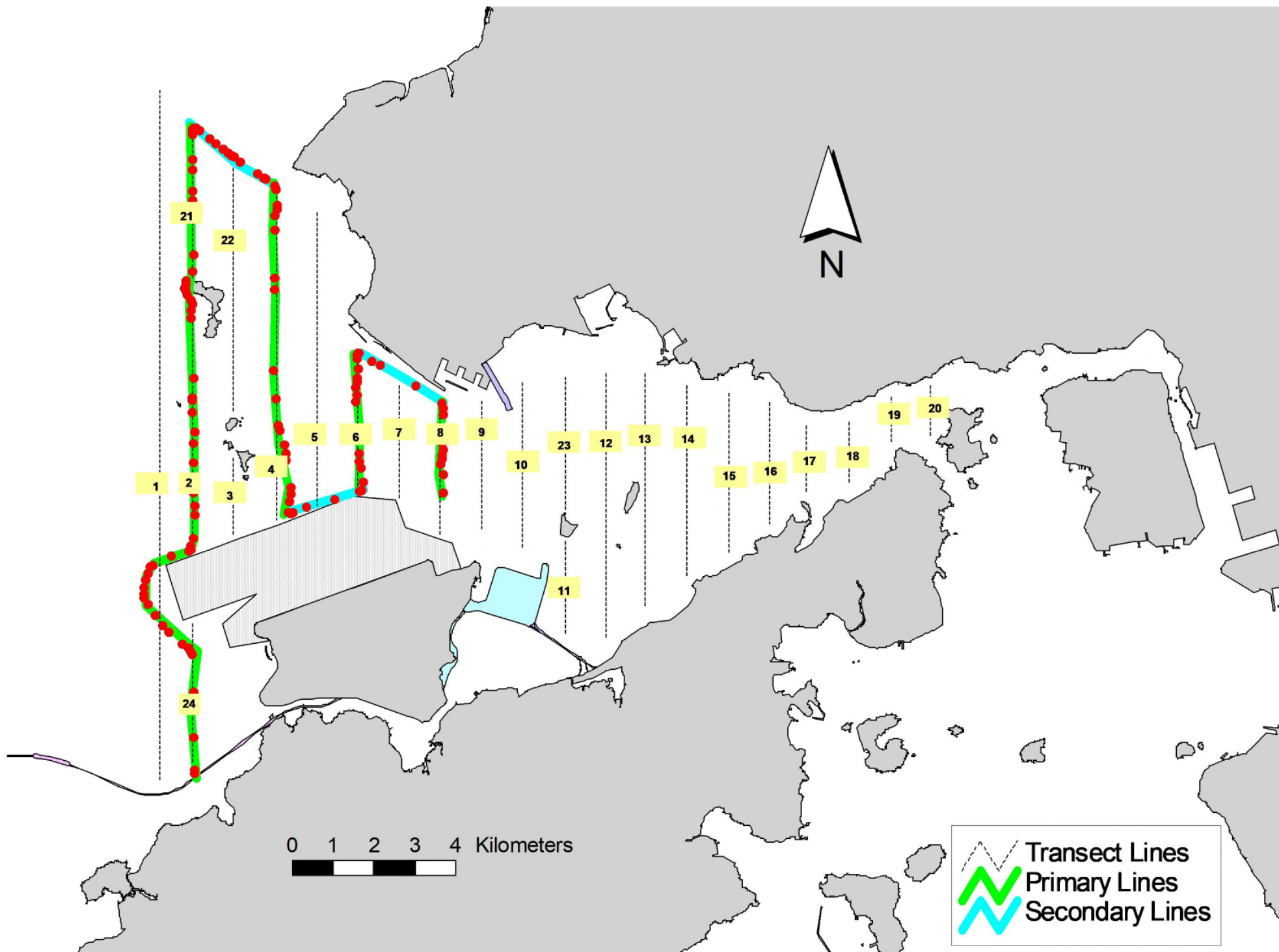


Figure 2. Survey Route on January 9th, 2024

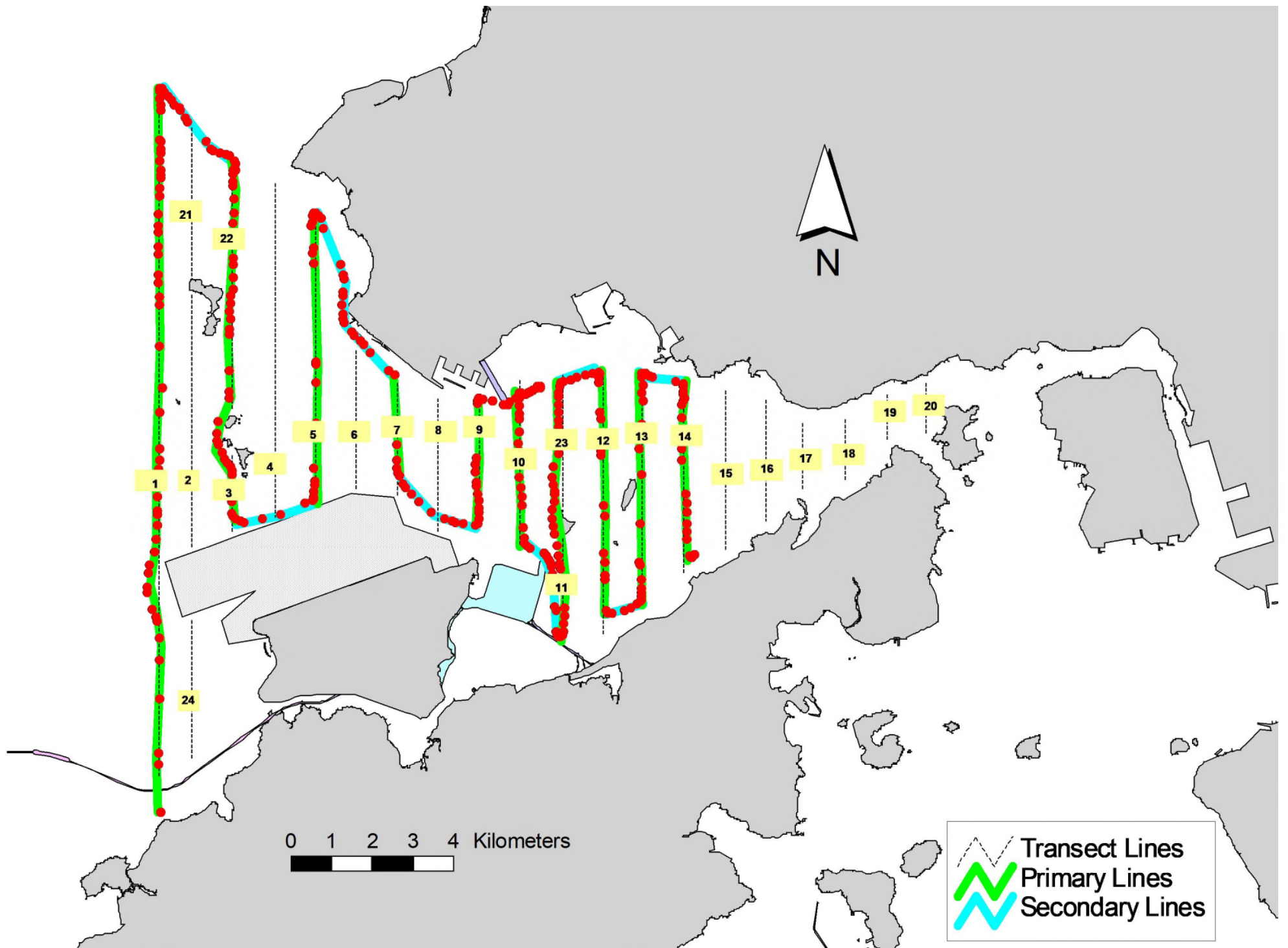


Figure 3. Survey Route on January 12th, 2024

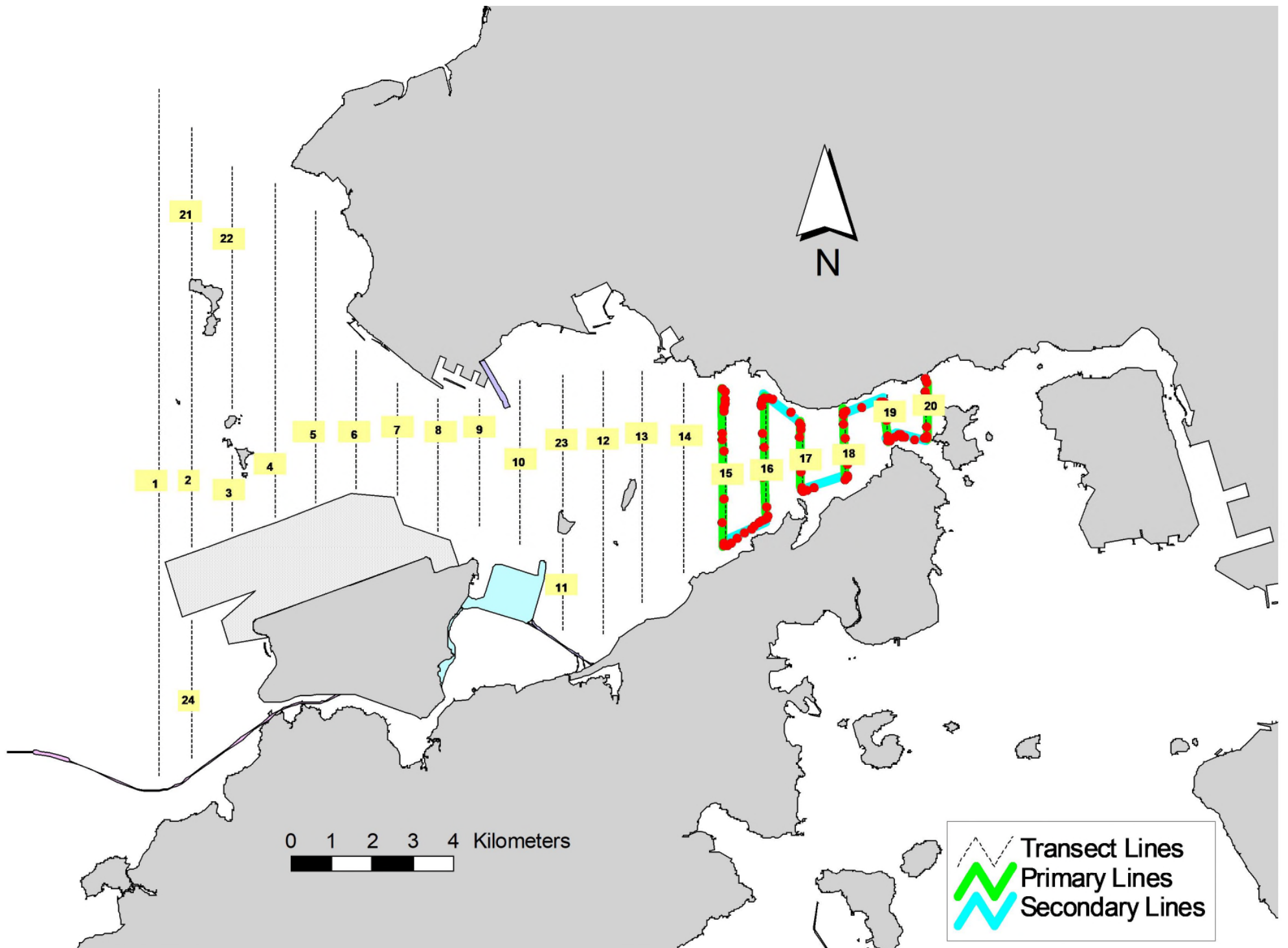


Figure 4. Survey Route on January 18th, 2024

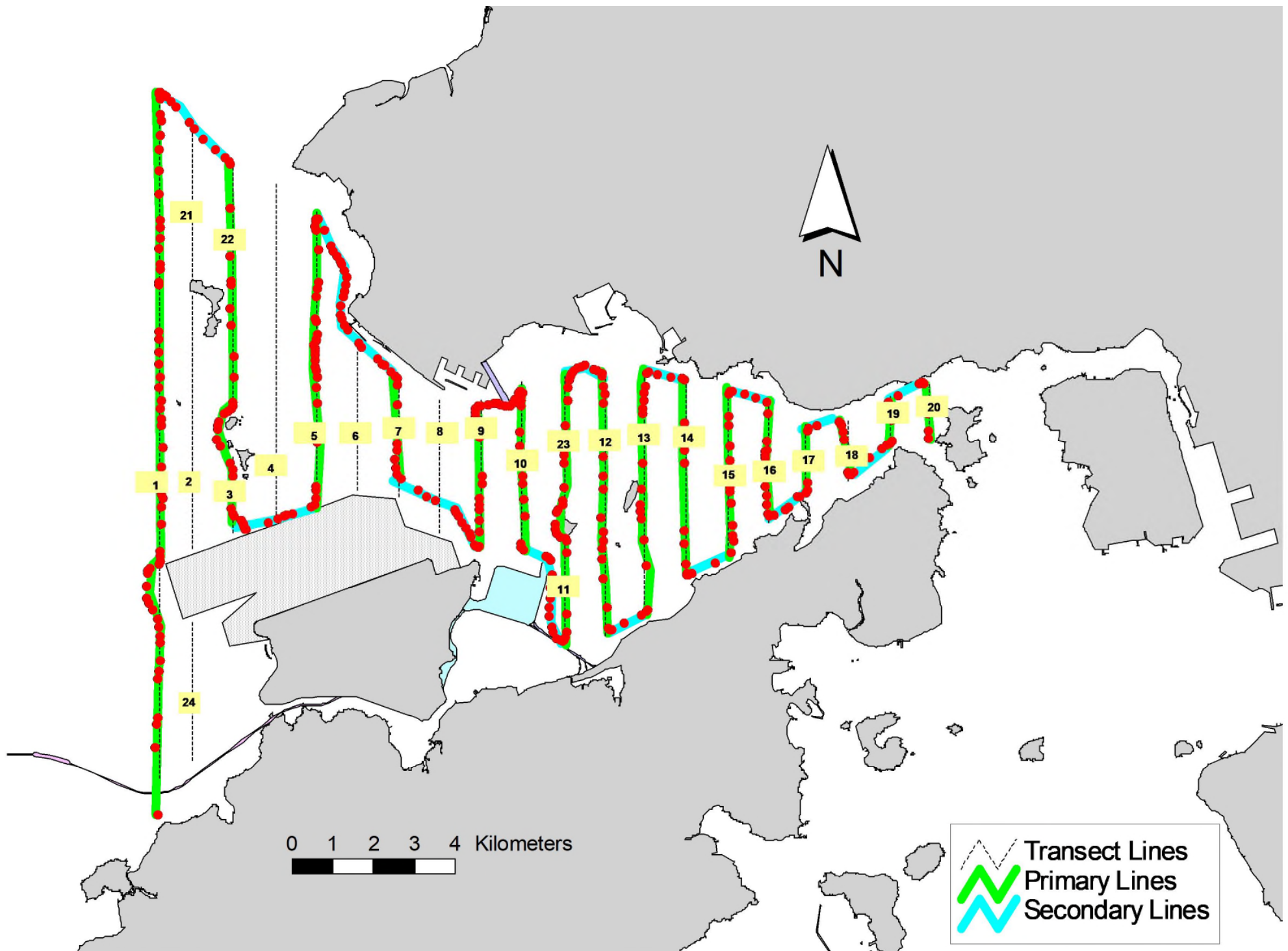


Figure 5. Survey Route on January 19th, 2024

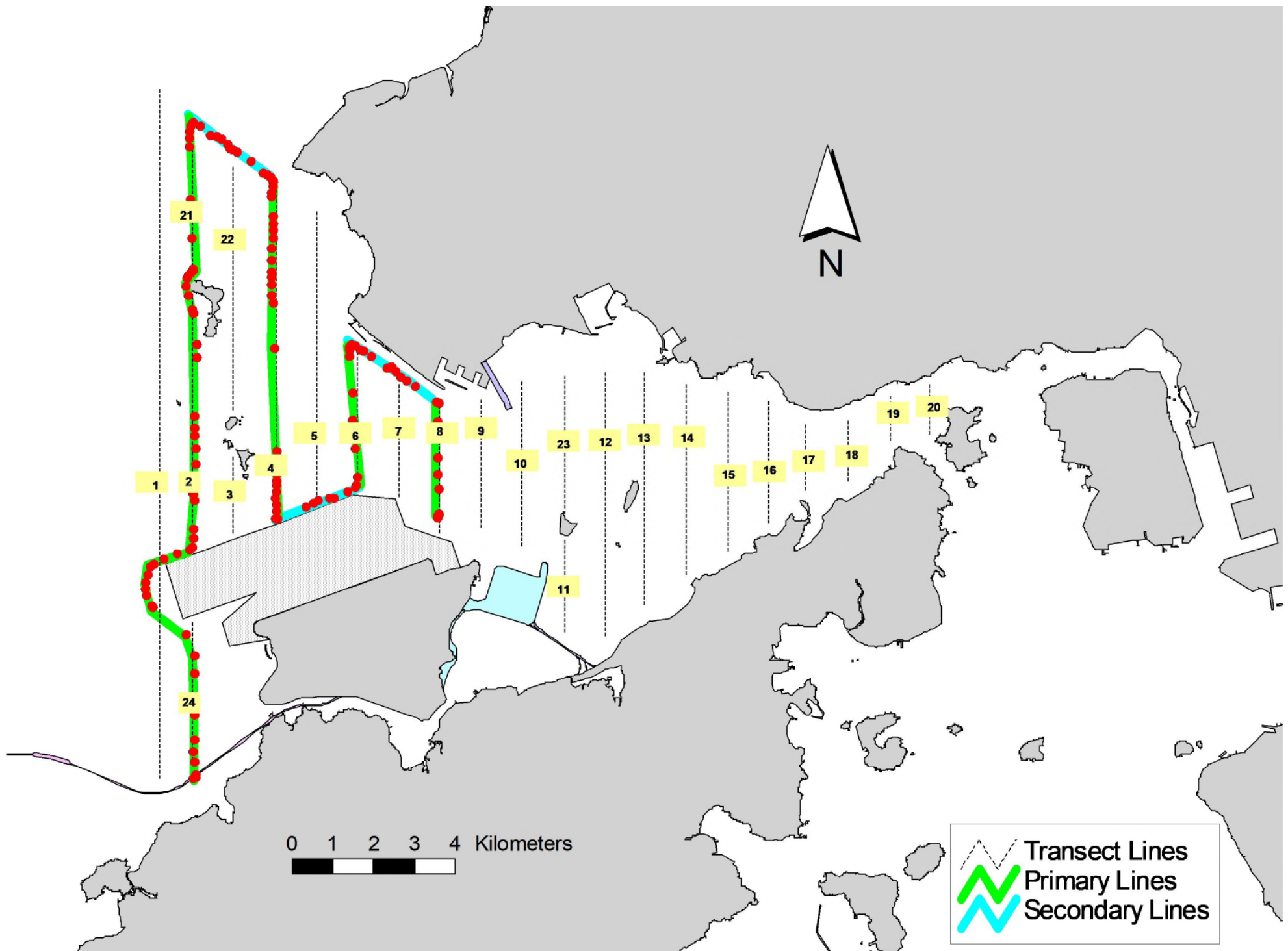


Figure 6. Survey Route on January 25th, 2024

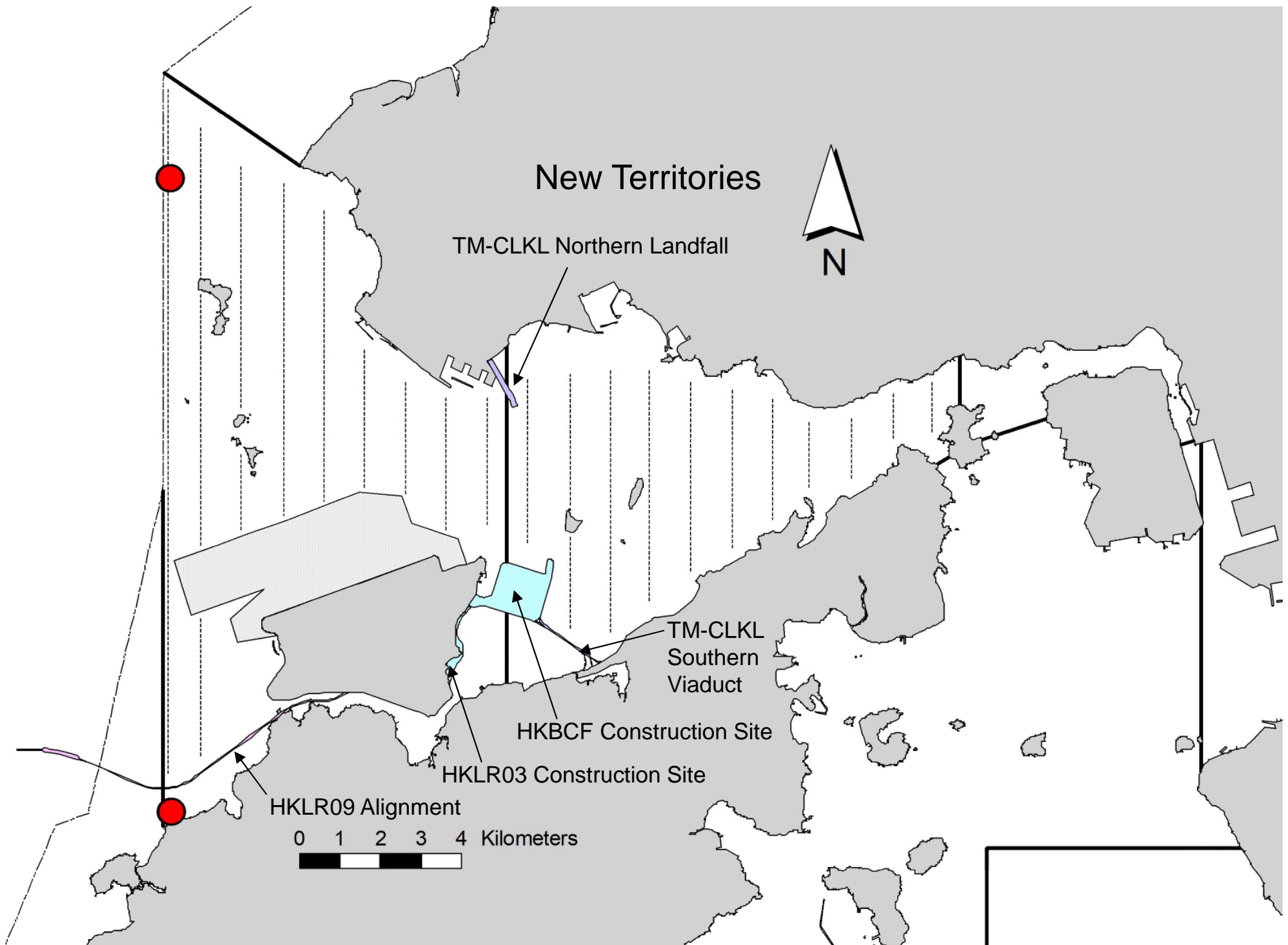


Figure 7. Distribution of Chinese White Dolphin Sightings during January 2024 HKLR03 Monitoring Surveys

Annex I. HKLR03 Survey Effort Database (January 2024)

(Abbreviations: BEAU = Beaufort Sea State; P = Primary Line Effort; S = Secondary Line Effort)

DATE	AREA	BEAU	EFFORT	SEASON	VESSEL	TYPE	P/S
09-Jan-24	NW LANTAU	2	24.94	WINTER	STANDARD36826	HKLR	P
09-Jan-24	NW LANTAU	2	10.96	WINTER	STANDARD36826	HKLR	S
12-Jan-24	NW LANTAU	2	33.69	WINTER	STANDARD36826	HKLR	P
12-Jan-24	NW LANTAU	2	15.22	WINTER	STANDARD36826	HKLR	S
12-Jan-24	NE LANTAU	2	23.39	WINTER	STANDARD36826	HKLR	P
12-Jan-24	NE LANTAU	2	6.81	WINTER	STANDARD36826	HKLR	S
18-Jan-24	NE LANTAU	2	12.09	WINTER	STANDARD25686	HKLR	P
18-Jan-24	NE LANTAU	2	5.41	WINTER	STANDARD25686	HKLR	S
19-Jan-24	NW LANTAU	2	35.13	WINTER	STANDARD25686	HKLR	P
19-Jan-24	NW LANTAU	2	14.27	WINTER	STANDARD25686	HKLR	S
19-Jan-24	NW LANTAU	3	0.40	WINTER	STANDARD25686	HKLR	S
19-Jan-24	NE LANTAU	2	11.99	WINTER	STANDARD25686	HKLR	P
19-Jan-24	NE LANTAU	3	24.62	WINTER	STANDARD25686	HKLR	P
19-Jan-24	NE LANTAU	2	4.40	WINTER	STANDARD25686	HKLR	S
19-Jan-24	NE LANTAU	3	8.59	WINTER	STANDARD25686	HKLR	S
25-Jan-24	NW LANTAU	2	18.62	WINTER	STANDARD25686	HKLR	P
25-Jan-24	NW LANTAU	3	7.80	WINTER	STANDARD25686	HKLR	P
25-Jan-24	NW LANTAU	2	4.68	WINTER	STANDARD25686	HKLR	S
25-Jan-24	NW LANTAU	3	6.40	WINTER	STANDARD25686	HKLR	S

Annex II. HKLR03 Chinese White Dolphin Sighting Database (January 2024)

(Abberviations: STG# = Sighting Number; HRD SZ = Dolphin Herd Size; BEAU = Beaufort Sea State; PSD = Perpendicular Distance; BOAT ASSOC. = Fishing Boat Association; P/S: Sighting Made on Primary/Secondary Lines)

DATE	STG #	TIME	HRD SZ	AREA	BEAU	PSD	EFFORT	TYPE	NORTHING	EASTING	SEASON	BOAT ASSOC.	P/S
12-Jan-24	1	1110	3	NW LANTAU	2	77	ON	HKLR	829323	804700	WINTER	NONE	P
19-Jan-24	1	1007	3	NW LANTAU	2	208	ON	HKLR	814617	804732	WINTER	NONE	P

Annex III. Individual dolphins identified during HKLR03 monitoring surveys in January 2024

ID#	DATE	STG#	AREA
WL79	12/01/24	1	NW LANTAU
WL145	19/01/24	1	NW LANTAU
WL315	19/01/24	1	NW LANTAU



Annex IV. Photograph of Identified Individual Dolphin in January 2024 (HKLR03)