

Figure 1. Transect Line Layout in Northwest and Northeast Lantau Survey Areas

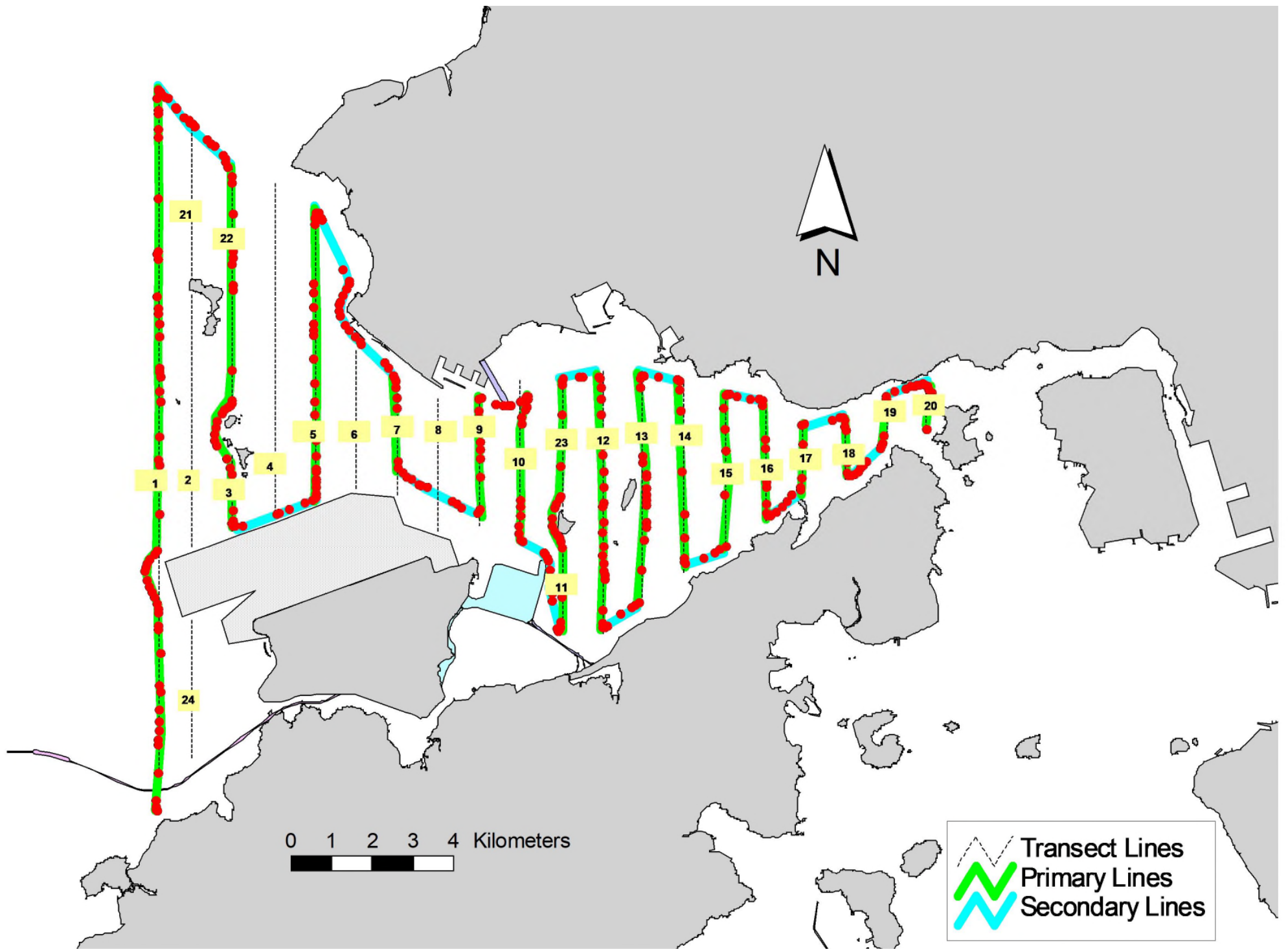


Figure 2. Survey Route on March 4th, 2024

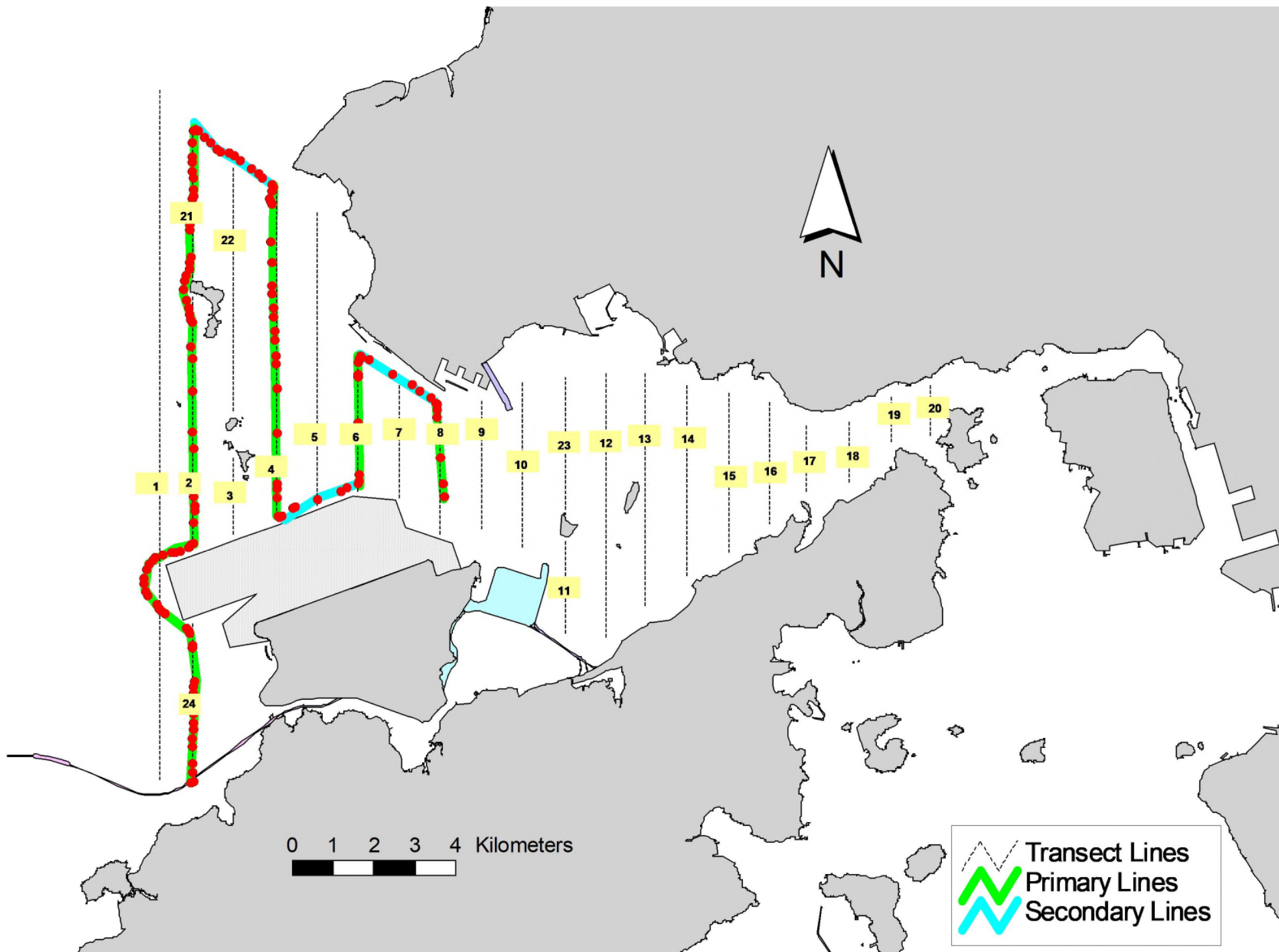


Figure 3. Survey Route on March 5th, 2024

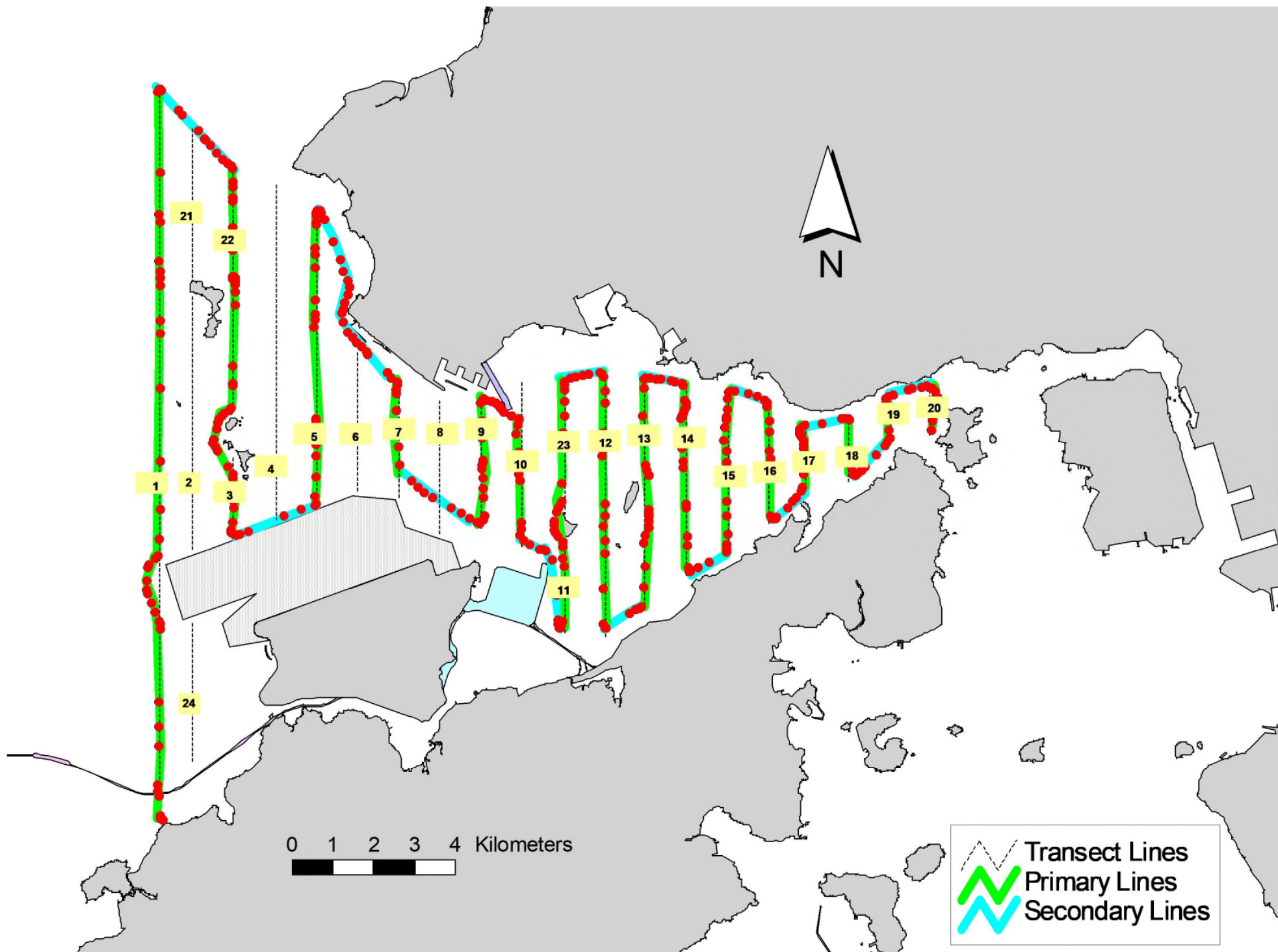


Figure 4. Survey Route on March 15th, 2024

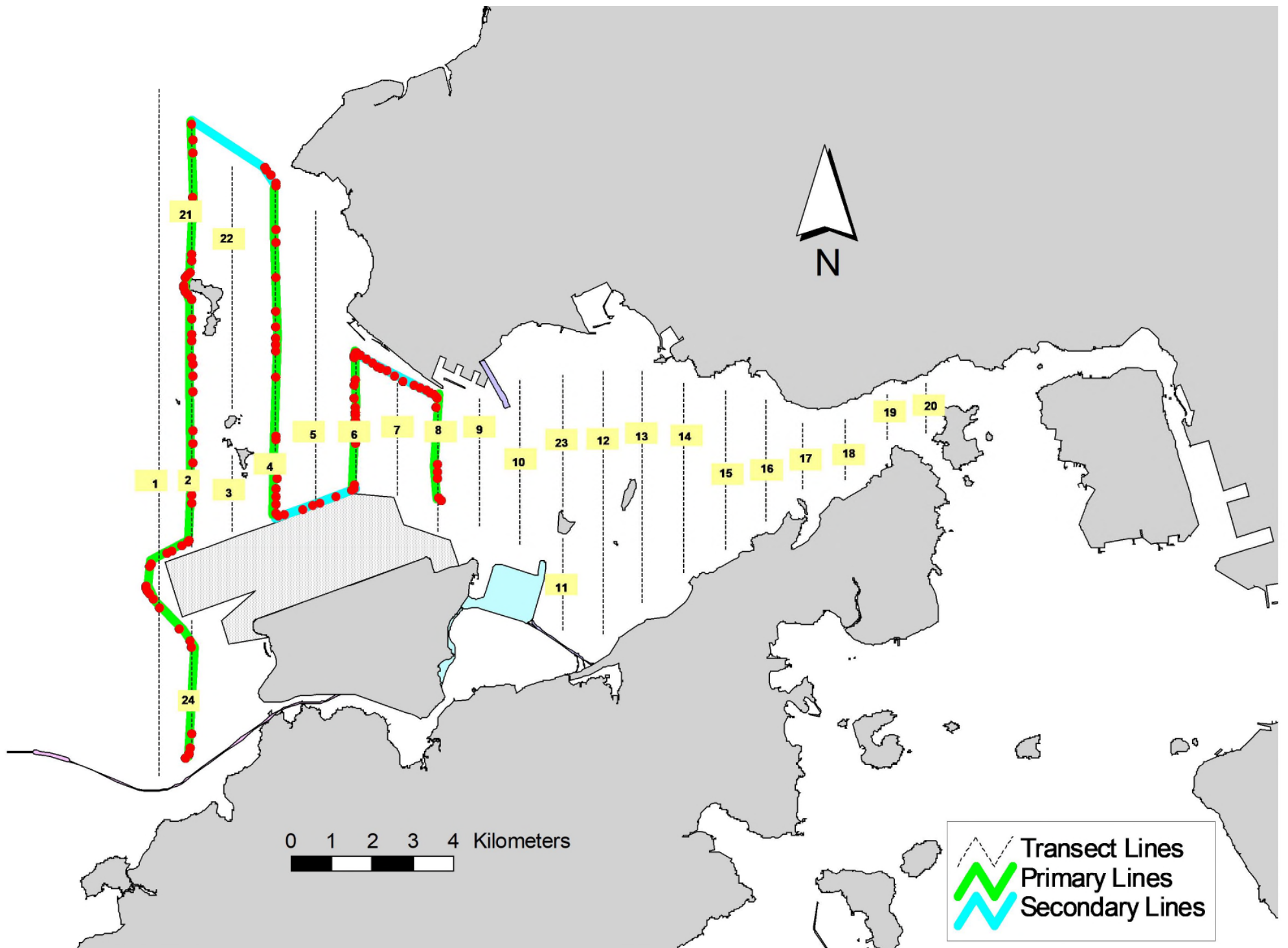


Figure 5. Survey Route on March 20th, 2024

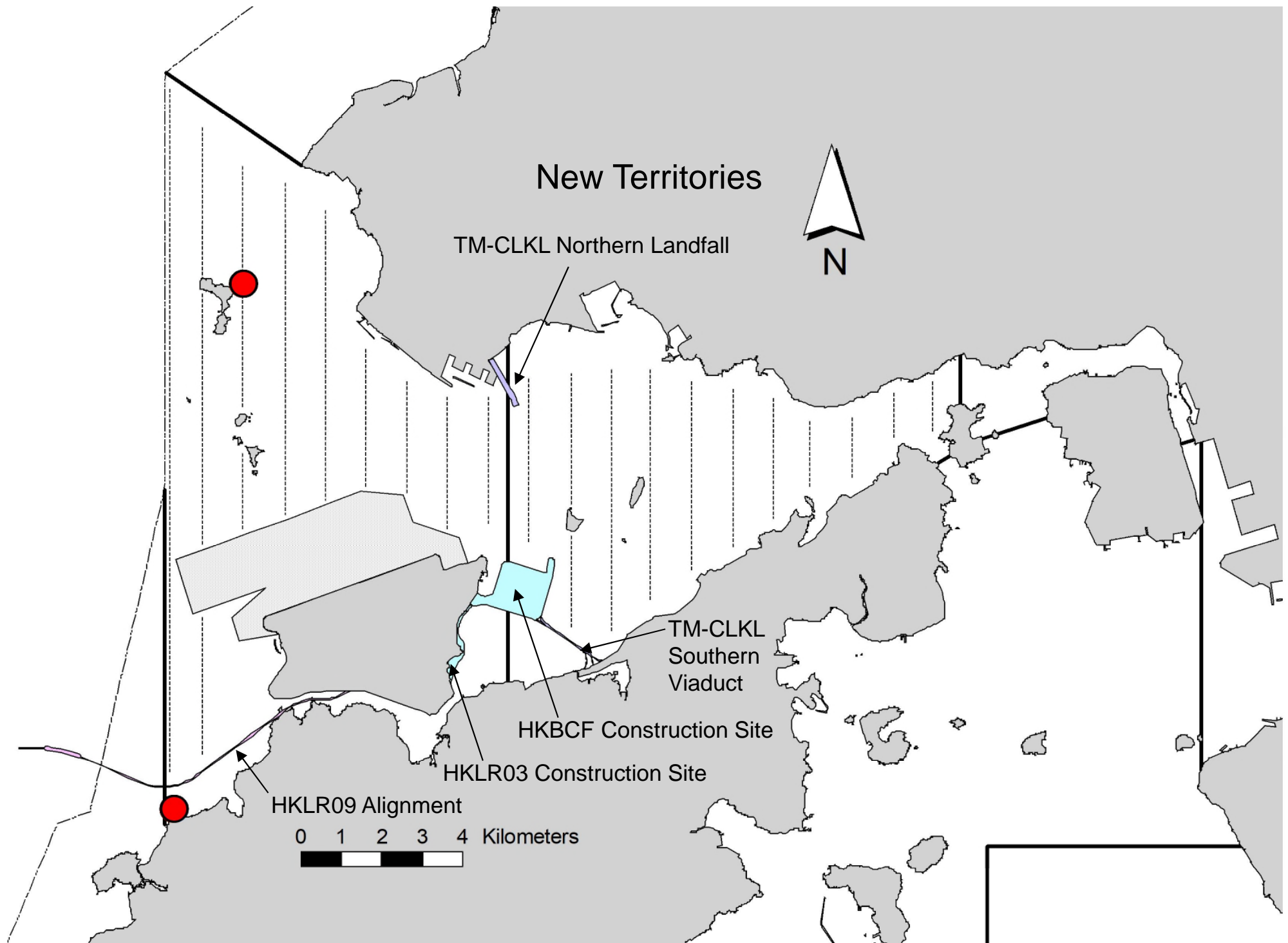


Figure 6. Distribution of Chinese White Dolphin Sightings during March 2024 HKLR03 Monitoring Surveys

Annex I. HKLR03 Survey Effort Database (March 2024)

(Abbreviations: BEAU = Beaufort Sea State; P = Primary Line Effort; S = Secondary Line Effort)

DATE	AREA	BEAU	EFFORT	SEASON	VESSEL	TYPE	P/S
04-Mar-24	NW LANTAU	2	0.89	SPRING	STANDARD36826	HKLR	P
04-Mar-24	NW LANTAU	3	32.32	SPRING	STANDARD36826	HKLR	P
04-Mar-24	NW LANTAU	3	13.39	SPRING	STANDARD36826	HKLR	S
04-Mar-24	NW LANTAU	4	2.00	SPRING	STANDARD36826	HKLR	S
04-Mar-24	NE LANTAU	2	21.49	SPRING	STANDARD36826	HKLR	P
04-Mar-24	NE LANTAU	3	13.54	SPRING	STANDARD36826	HKLR	P
04-Mar-24	NE LANTAU	2	6.41	SPRING	STANDARD36826	HKLR	S
04-Mar-24	NE LANTAU	3	6.36	SPRING	STANDARD36826	HKLR	S
05-Mar-24	NW LANTAU	2	9.83	SPRING	STANDARD36826	HKLR	P
05-Mar-24	NW LANTAU	3	13.80	SPRING	STANDARD36826	HKLR	P
05-Mar-24	NW LANTAU	4	1.50	SPRING	STANDARD36826	HKLR	P
05-Mar-24	NW LANTAU	2	4.27	SPRING	STANDARD36826	HKLR	S
05-Mar-24	NW LANTAU	3	5.00	SPRING	STANDARD36826	HKLR	S
05-Mar-24	NW LANTAU	4	1.70	SPRING	STANDARD36826	HKLR	S
15-Mar-24	NW LANTAU	2	12.92	SPRING	STANDARD36826	HKLR	P
15-Mar-24	NW LANTAU	3	21.19	SPRING	STANDARD36826	HKLR	P
15-Mar-24	NW LANTAU	2	3.50	SPRING	STANDARD36826	HKLR	S
15-Mar-24	NW LANTAU	3	12.09	SPRING	STANDARD36826	HKLR	S
15-Mar-24	NE LANTAU	2	11.40	SPRING	STANDARD36826	HKLR	P
15-Mar-24	NE LANTAU	3	23.18	SPRING	STANDARD36826	HKLR	P
15-Mar-24	NE LANTAU	2	6.44	SPRING	STANDARD36826	HKLR	S
15-Mar-24	NE LANTAU	3	6.68	SPRING	STANDARD36826	HKLR	S
20-Mar-24	NW LANTAU	2	20.80	SPRING	STANDARD36826	HKLR	P
20-Mar-24	NW LANTAU	3	4.96	SPRING	STANDARD36826	HKLR	P
20-Mar-24	NW LANTAU	2	6.33	SPRING	STANDARD36826	HKLR	S
20-Mar-24	NW LANTAU	3	1.72	SPRING	STANDARD36826	HKLR	S

Annex II. HKLR03 Chinese White Dolphin Sighting Database (March 2024)

(Abbreviations: STG# = Sighting Number; HRD SZ = Dolphin Herd Size; BEAU = Beaufort Sea State; PSD = Perpendicular Distance; BOAT ASSOC. = Fishing Boat Association; P/S: Sighting Made on Primary/Secondary Lines)

DATE	STG #	TIME	HRD SZ	AREA	BEAU	PSD	EFFORT	TYPE	NORTHING	EASTING	SEASON	BOAT ASSOC.	P/S
04-Mar-24	1	1011	2	NW LANTAU	2	117	ON	HKLR	814628	804763	SPRING	NONE	P
15-Mar-24	1	1136	2	NW LANTAU	3	154	ON	HKLR	826883	806456	SPRING	NONE	P

Annex III. Individual dolphins identified during HKLR03 monitoring surveys in March 2024

ID#	DATE	STG#	AREA
NL261	15/03/24	1	NW LANTAU
SL67	15/03/24	1	NW LANTAU
WL294	04/03/24	1	NW LANTAU



Annex IV. Photograph of Identified Individual Dolphin in March 2024 (HKLR03)