

Table 3.1. Record of horseshoe crab survey at every sampling zone.

Ind. #	Sub.	GPS coordinate		Record of prosomal width (mm)
<u>Sampling site TC1 (Search hour = 2 hrs)</u>				
<i>Carcinoscorpius rotundicauda</i>				
1	M	22° 17.083' N	113° 56.051' E	45.36
<u>Sampling site TC2 (Search hour = 2 hrs)</u>				
<i>Carcinoscorpius rotundicauda</i>				
1	M	22° 16.915' N	113° 55.879' E	44.61
<u>Sampling site TC3 (Search hour = 2 hrs)</u>				
<i>Carcinoscorpius rotundicauda</i>				
1	S	22° 17.069' N	113° 55.618' E	42.85
1	S	22° 17.044' N	113° 55.636' E	57.88
1	S	22° 17.041' N	113° 55.639' E	48.69

Ind. #: number of Individuals (individuals in a group are shown at the same row)

Sub.: Substratum type; G = Gravel and Boulders, M = Soft mud, S = Sand

Table 3.1 (Cont'd). Record of horseshoe crab survey at every sampling zone.

Ind. #	Sub.	GPS coordinate		Record of prosomal width (mm)				
<u>Sampling site ST (Search hour = 3 hrs)</u>								
<i>Carcinoscorpius rotundicauda</i>								
1	S	22° 17.236' N	113° 55.495' E	38.14				
1	S	22° 17.232' N	113° 55.498' E	35.17				
1	S	22° 17.224' N	113° 55.478' E	35.16				
2	M	22° 17.227' N	113° 55.475' E	34.52	47.62			
1	S	22° 17.216' N	113° 55.479' E	33.81				
5	S	22° 17.203' N	113° 55.489' E	32.8	35.55	40.8	41.17	49.43
1	S	22° 17.212' N	113° 55.496' E	37.56				
1	S	22° 17.231' N	113° 55.519' E	59.69				
1	S	22° 17.195' N	113° 55.510' E	27.12				
1	S	22° 17.191' N	113° 55.508' E	37.68				
1	M	22° 17.151' N	113° 55.489' E	42.25				

Ind. #: number of Individuals (individuals in a group are shown at the same row)

Sub.: Substratum type; G = Gravel and Boulders, M = Soft mud, S = Sand

Table 3.1 (Cont'd). Record of horseshoe crab survey at every sampling zone.

Ind. #	Sub.	GPS coordinate		Record of prosomal width (mm)								
Sampling site ST (Search hour = 3 hrs)												
<i>Tachypleus tridentatus</i>												
3	S	22° 17.231' N	113° 55.498' E	33.91	35.68	48.15						
1	S	22° 17.214' N	113° 55.480' E	51.76								
6	S	22° 17.205' N	113° 55.488' E	45.79	46.57	48.85	49.92	59.63	70.59			
1	S	22° 17.201' N	113° 55.500' E	58.7								
9	S	22° 17.212' N	113° 55.497' E	35.56	36.36	46.45	51.68	48.8	51.13	47.53	50.67	
6	S	22° 17.217' N	113° 55.488' E	43.87	38.94	38.95	46.38	51.4	54.68			
2	S	22° 17.381' N	113° 55.471' E	52.2	54.65							
8	S	22° 17.391' N	113° 55.464' E	50.42	43.41	44.52	53.48	46.37	50.04	32.31	43.21	
1	S	22° 17.344' N	113° 55.503' E	50.32								
1	S	22° 17.213' N	113° 55.507' E	54.99								
1	S	22° 17.194' N	113° 55.510' E	67.61								
3	S	22° 17.189' N	113° 55.508' E	43.23	50.45	52.97						
2	S	22° 17.179' N	113° 55.487' E	46.43	53.02							

Ind. #: number of Individuals (individuals in a group are shown at the same row)

Sub.: Substratum type; G = Gravel and Boulders, M = Soft mud, S = Sand

Table 3.1 (Cont'd). Record of horseshoe crab survey at every sampling zone.

Ind. #	Sub.	GPS coordinate		Record of prosomal width (mm)		
<u>Sampling site ST (Search hour = 3 hrs)</u>						
<i>Tachypleus tridentatus</i>						
1	M	22° 17.154' N	113° 55.492' E	39.75		
<u>Sampling site ST (Search hour = 3 hrs)</u>						
<i>Tachypleus tridentatus</i> (artificially released)						
3	S	\		39.3	44.59	45.72

Ind. #: number of Individuals (individuals in a group are shown at the same row)

Sub.: Substratum type; G = Gravel and Boulders, M = Soft mud, S = Sand

Table 3.2. Summary of horseshoe crab survey at every sampling zone.

	TC1	TC2	TC3	ST
Search duration (hr)	2	2	2	3
<i>Tachypleus tridentatus</i>				
no. of individuals				45
mean prosomal width (mm)	N.A.	N.A.	N.A.	48.42
range of prosomal width (mm)				32.31-70.59
Search record (ind. hr-1 person-1)				7.50
<i>Carcinoscorpius rotundicauda</i>				
no. of individuals	1	1	3	16
mean prosomal width (mm)	45.36	44.61	49.81	39.28
range of prosomal width (mm)	\	\	42.85-57.88	27.12-59.69
Search record (ind. hr-1 person-1)	0.25	0.25	0.75	2.67

TC1 *Carcinoscorpius rotundicauda*



TC2 *Carcinoscorpius rotundicauda*



TC3 *Carcinoscorpius rotundicauda*



ST *Carcinoscorpius rotundicauda*



ST *Tachypleus tridentatus*



Figure 3.1. Examples of photographic records of horseshoe crab *Carcinoscorpius rotundicauda* and *Tachypleus tridentatus* in the present survey (taken on 17 & 20/09/2013)

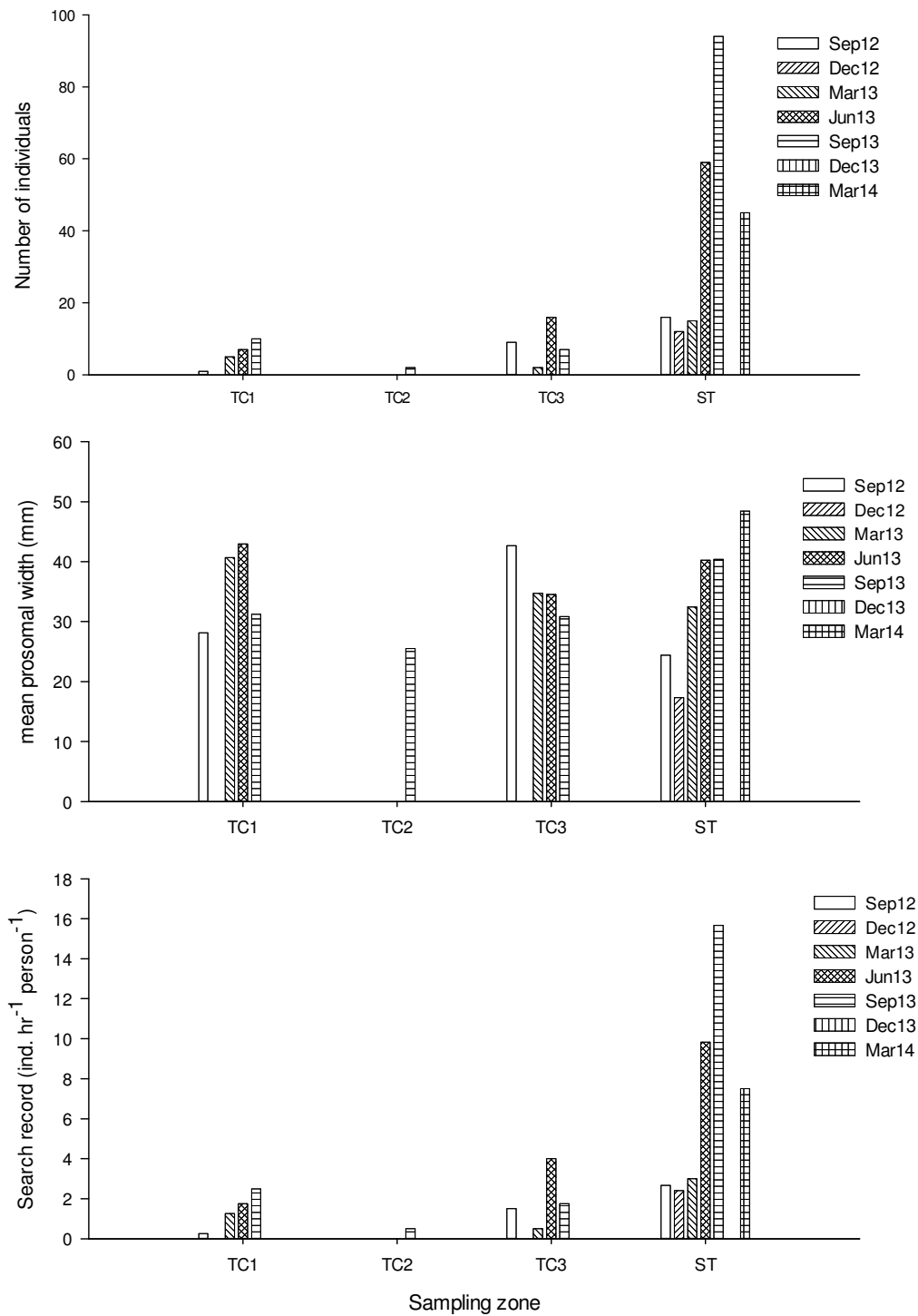


Figure 3.2. Changes of number of individuals, mean prosomal width and search record of horseshoe crab *Tachypleus tridentatus* at the four sampling zones along the sampling months. * No individual was found in the survey of Dec. 2013.

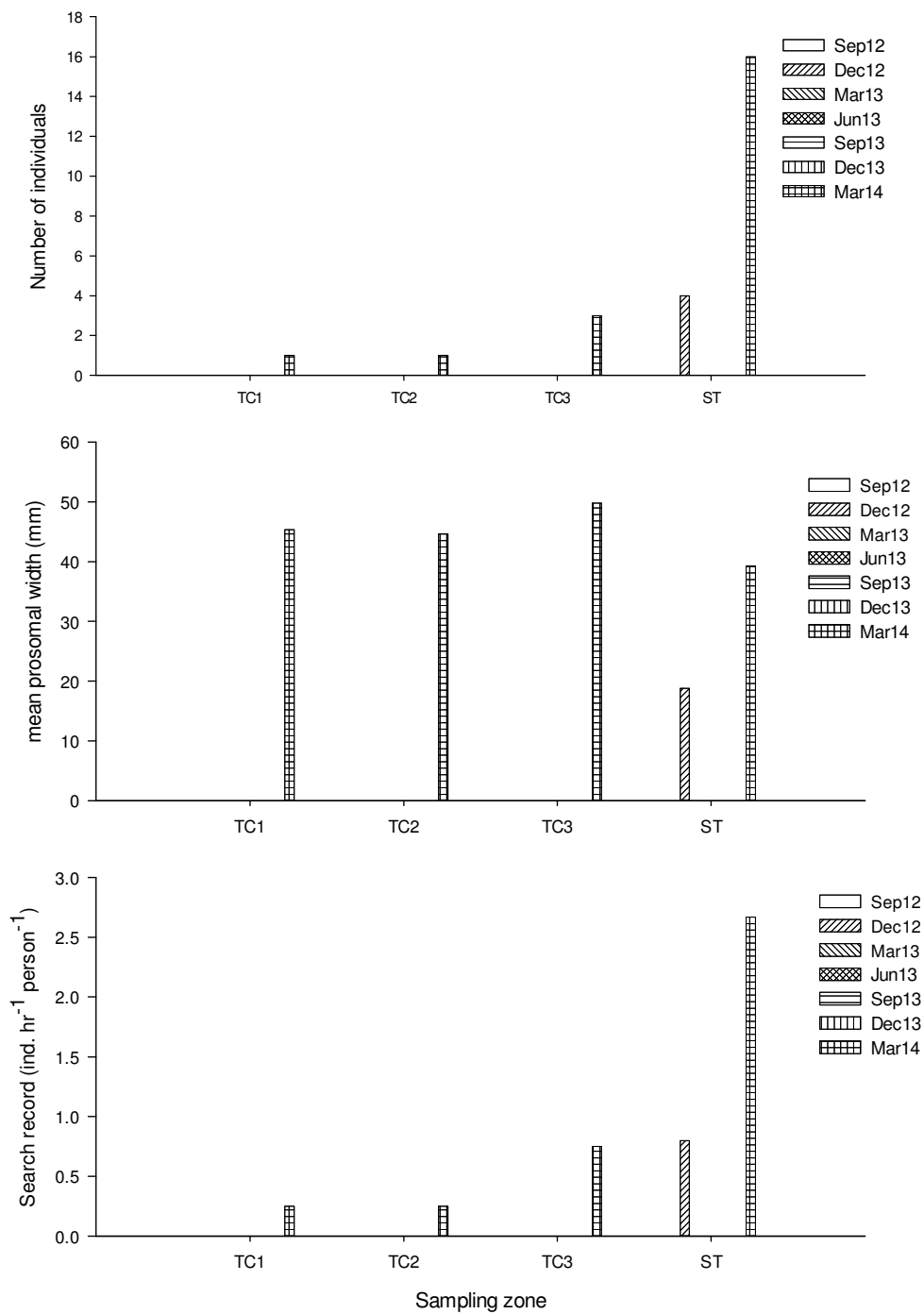


Figure 3.3. Changes of number of individuals, mean prosomal width and search record of horseshoe crab *Carcinoscorpius rotundicauda* at the four sampling zones along the sampling months. * Individuals were found in the surveys of Dec. 2012 and Mar. 2014.

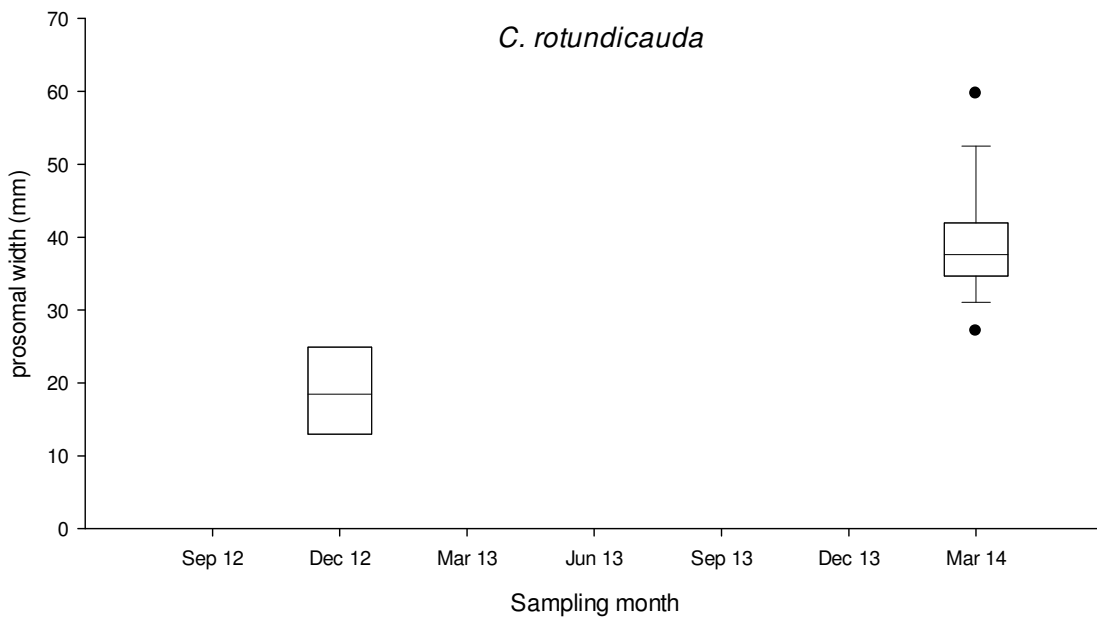
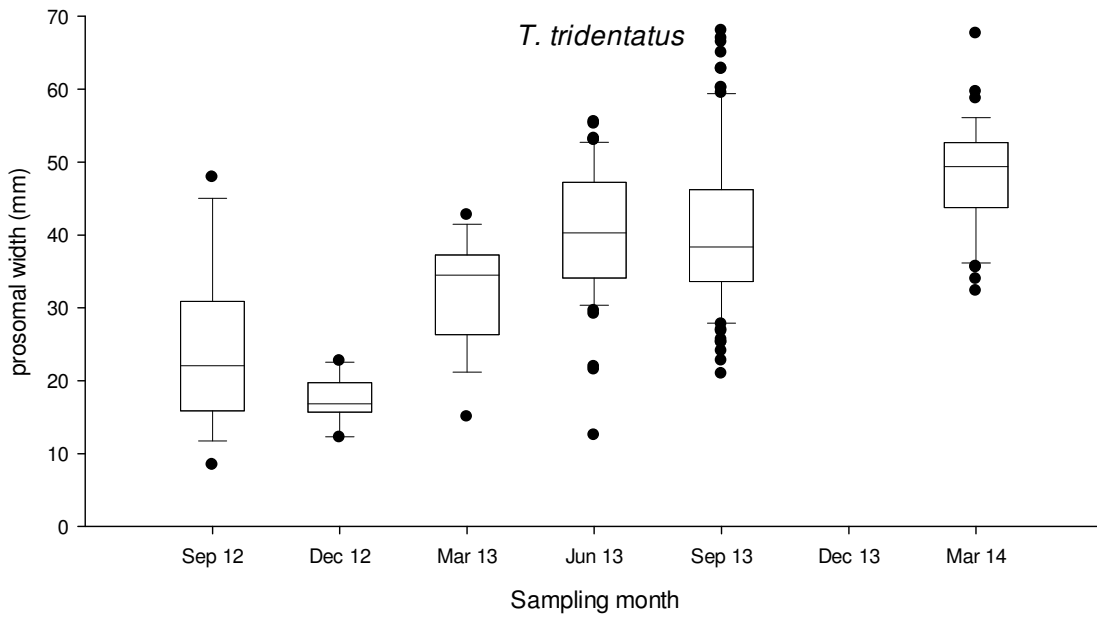


Figure 3.4. Box plot of prosomal width of horseshoe crab *Tachypleus tridentatus* and *Carcinoscorpius rotundicauda* at the sampling zone ST along the sampling months. (The box represents 50% of the sample (upper to lower quartile) with a middle line showing the median value. The upper whisker and lower whisker showed the 25% of sample above upper quartile and below the lower quartile respectively. The black circle dots showed the data of outlier.)

Table 3.3. Record of seagrass beds survey at every sampling zone

Estimated area (m ²)	Estimated coverage (%)	GPS coordinate		Remark
TC1 (search hour = 2 hrs) & TC2 (search hour = 2 hrs) & TC3 (search hour = 2 hrs)				
No record				
ST (search hour = 3 hrs) <i>Halophila ovalis</i>				
54.0	90-100	22° 17.220' N	113° 55.475' E	--
		22° 17.217' N	113° 55.476' E	A medium patch of seagrass bed nearby the seaward side of mangrove area at tidal level
50.5	90-100	22° 17.222' N	113° 55.475' E	--
		22° 17.219' N	113° 55.482' E	2.0m above C.D.
609.0	90-100	22° 17.214' N	113° 55.475' E	--
		22° 17.195' N	113° 55.477' E	A large patch of seagrass bed nearby the seaward side of mangrove area at tidal level 2.0m above C.D.
1.5	10-15	22° 17.206' N	113° 55.499' E	
3.0	20	22° 17.193' N	113° 55.510' E	
5.0	50	22° 17.183' N	113° 55.491' E	
7.5	60	22° 17.187' N	113° 55.489' E	A small patch of seagrass bed on soft mud between 1.0 and 1.5 m above C.D.
7.5	80	22° 17.188' N	113° 55.487' E	
4.0	80	22° 17.185' N	113° 55.485' E	
4.0	80	22° 17.183' N	113° 55.486' E	

Table 3.3 (Cont'd). Record of seagrass beds survey at every sampling zone

Estimated area (m ²)	Estimated coverage (%)	GPS coordinate		Remark
ST (search hour = 3 hrs)		<i>Halophila ovalis</i>		
1.1	50	22° 17.180' N	113° 55.489' E	
2.0	50	22° 17.180' N	113° 55.489' E	
1.0	40	22° 17.181' N	113° 55.488' E	
12.5	50-60	22° 17.180' N	113° 55.491' E	
1.5	40	22° 17.165' N	113° 55.486' E	
4.6	40	22° 17.161' N	113° 55.521' E	
2.4	40	22° 17.161' N	113° 55.524' E	
3.8	50	22° 17.165' N	113° 55.522' E	
15.0	80	22° 17.163' N	113° 55.538' E	A small patch of seagrass bed on soft mud between 1.0 and 1.5 m above C.D.
12.1	80	22° 17.154' N	113° 55.532' E	
8.4	80	22° 17.152' N	113° 55.529' E	
24.5	80	22° 17.137' N	113° 55.536' E	
22.5	80	22° 17.138' N	113° 55.550' E	
38.0	80	22° 17.138' N	113° 55.558' E	
16.7	80	22° 17.119' N	113° 55.551' E	
19.2	80	22° 17.112' N	113° 55.553' E	

Table 3.3 (Cont'd). Record of seagrass beds survey at every sampling zone

Estimated area (m ²)	Estimated coverage (%)	GPS coordinate		Remark
ST (search hour = 3 hrs) <i>Halophila ovalis</i>				
26.4	60	22° 17.106' N	113° 55.564' E	A small patch of seagrass bed on soft mud between 1.0 and 1.5 m above C.D.
72.0	80	22° 17.133' N	113° 55.544' E	
54.6	80	22° 17.123' N	113° 55.547' E	
45.4	80	22° 17.124' N	113° 55.555' E	
41.0	80	22° 17.109' N	113° 55.557' E	A medium patch of seagrass bed on soft mud between 1.0 and 1.5 m above C.D.
48.8	80	22° 17.114' N	113° 55.562' E	
71.3	80	22° 17.108' N	113° 55.576' E	
59.3	60	22° 17.099' N	113° 55.564' E	
ST (search hour = 3 hrs) <i>Zostera japonica</i>				
0.2	10	22° 17.201' N	113° 55.471' E	
0.1	10	22° 17.206' N	113° 55.474' E	
2.9	20	22° 17.211' N	113° 55.476' E	A small patch grown in the co-inhabiting another seagrass species <i>Halophila ovalis</i> .
0.1	60	22° 17.219' N	113° 55.474' E	

Table 3.4. Summary of seagrass survey at sampling zone ST.

Summary	<i>Halophila ovalis</i>	<i>Zostera japonica</i>
no. of patches	34	4
Total area (m²)	1349.94	3.27
Average area (m²)	39.7041176	0.8175

Halophila ovalis



Zostera japonica



Figure 3.5. Examples of photographic records of seagrass beds survey at ST (taken on 20/03/2014)



Figure 3.6. *Photographic records of flower of seagrass bed Halophila ovalis at ST*
(taken on 18/12/2013)

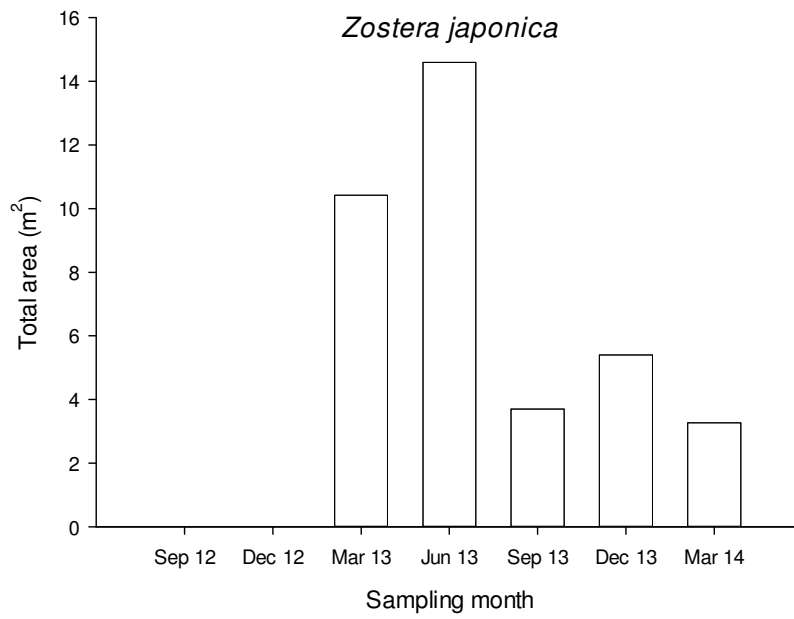
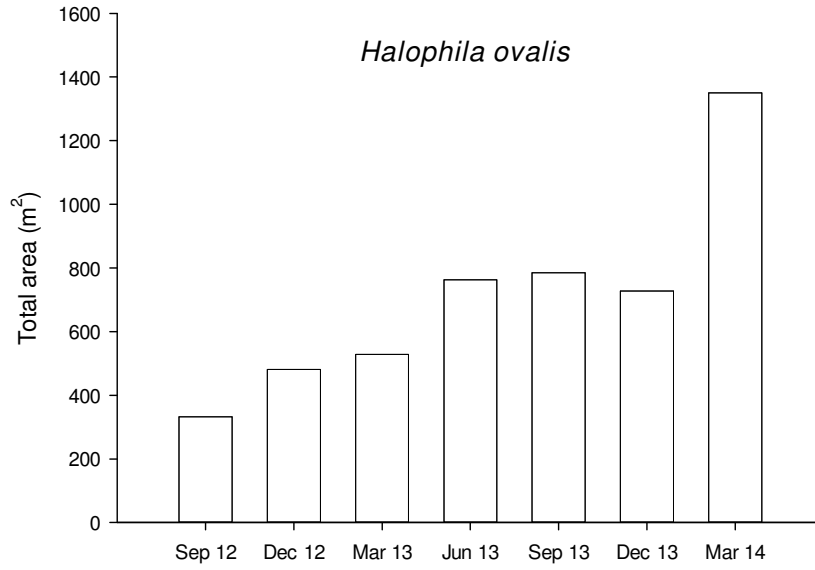


Figure 3.7. Changes of estimated total area of seagrass beds at sampling zone ST along the sampling months

Table 3.5. *Relative distribution (%) of types of substratum along the horizontal transect at every tidal level and sampling zone.*

Sampling zone	Tidal level	Percentage		
		Gravels and Boulders	Sands	Soft mud
TC1	H	70	20	10
	M	70	30	
	L	60	20	20
TC2	H		60	40
	M		100	
	L		30	70
TC3	H		100	
	M		70	30
	L	100		
ST	H	100		
	M	90	10	
	L	20	30	50

H: 2.0 m above C.D.; M: 1.5 m above C.D.; L: 1.0 m above C.D.

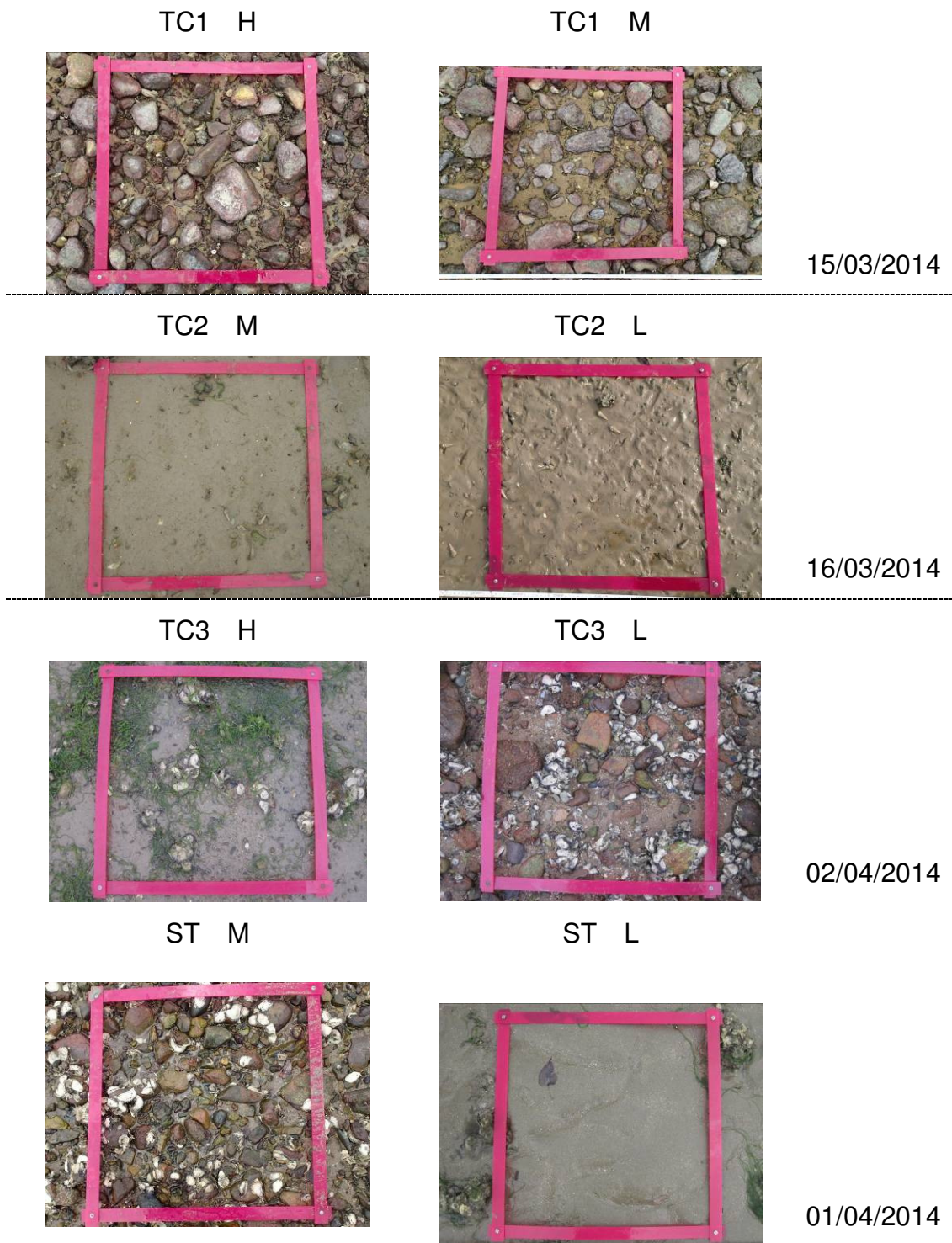


Figure 3.8. *Examples of photographic records of quadrat for intertidal soft shore community survey (H: 2.0 m above C.D.; M: 1.5 m above C.D.; L: 1.0 m above C.D.)*

Table 3.6. *Total abundance, density and number of taxon of every phylum*

Phylum	Total Abundance	%	Density (ind. m⁻²)	Number of taxon
<i>Mar 2014</i>				
Mollusca	14165	98.5	472	40
Arthropoda	113	0.8	4	11
Annelida	57	0.4	2	10
Sipuncula	34	0.2	1	1
Cnidaria	5	0.0	0	1
Echinodermata	5	0.0	0	1
Chordata	2	0.0	0	1
Nemertea	2	0.0	0	1
Total	14383			

0 ind. m⁻²: Density of the phylum is less than 1 ind. m⁻².

0.0 %: Total abundance of the phylum is less than 0.1% of relative abundance.

Table 3.7. *The number of individuals, relative abundance (percentage) and density of each phylum at every sampling zone.*

Phylum	TC1	%	Density (ind. m ⁻²)	TC2	%	Density (ind. m ⁻²)	TC3	%	Density (ind. m ⁻²)	ST	%	Density (ind. m ⁻²)
Annelida	12	0.3	2	26	1.4	3	14	0.3	2	5	0.1	1
Arthropoda	16	0.4	2	44	2.4	6	26	0.5	3	27	0.7	4
Chordata				1	0.1	0				1	0.0	0
Cnidaria										5	0.1	1
Echinodermata	3	0.1	0				2	0.0	0			
Mollusca	3972	99.0	530	1732	95.4	231	4800	98.9	640	3661	98.9	488
Nemertea				2	0.1	0						
Sipuncula	11	0.3	1	11	0.6	1	9	0.2	1	3	0.1	0
Sub-total	4014			1816			4851			3702		

0.0 %: Total abundance of the phylum is less than 0.1% of relative abundance of the sampling zone.

0 ind. m⁻²: Density of the phylum is less than 1 ind. m⁻² of the sampling zone.

Table 3.8. *The abundant species (relative abundance >10%) at every sampling zone.*

Sampling zone TC1	Group	Species	mean density (ind. m ⁻²)	relative abundance (%)	cumulative relative abundance (%)
High	G	<i>Batillaria multiformis</i>	526	80	80
Mid	G	<i>Batillaria multiformis</i>	278	52	52
	Bi	<i>Saccostrea cucullata</i>	84	16	68
	G	<i>Monodonta labio</i>	74	14	82
Low	Bi	<i>Saccostrea cucullata</i>	133	32	32
	G	<i>Batillaria multiformis</i>	108	26	58
	G	<i>Monodonta labio</i>	43	10	68

Bi = Bivalve, G = Gastropod

Table 3.8 (Cont'd). *The abundant species (relative abundance >10%) at every sampling zone.*

Sampling zone TC2	Group	Species	mean density (ind. m ⁻²)	relative abundance (%)	cumulative relative abundance (%)
High	G	<i>Batillaria multiformis</i>	84	34	34
	G	<i>Cerithidea djadjariensis</i>	76	31	65
Mid	Bi	<i>Saccostrea cucullata</i>	86	32	32
	G	<i>Cerithidea djadjariensis</i>	45	17	49
	G	<i>Batillaria zonalis</i>	39	14	63
Low	G	<i>Batillaria zonalis</i>	77	37	37
	Bi	<i>Saccostrea cucullata</i>	33	16	52
	G	<i>Cerithidea djadjariensis</i>	33	16	68
	G	<i>Batillaria multiformis</i>	24	12	79

Bi = Bivalve, G = Gastropod

Table 3.8 (Cont'd). *The abundant species at every sampling zone.*

Sampling zone TC3	Group	Species	mean density (ind. m ⁻²)	relative abundance (%)	cumulative relative abundance (%)
High	G	<i>Batillaria multiformis</i>	444	65	65
	G	<i>Cerithidea djadjariensis</i>	146	21	86
Mid	G	<i>Batillaria multiformis</i>	214	57	57
	G	<i>Monodonta labio</i>	97	26	83
Low	G	<i>Batillaria multiformis</i>	376	43	43
	Bi	<i>Saccostrea cucullata</i>	186	21	64
	G	<i>Cerithidea djadjariensis</i>	162	18	82

Bi = Bivalve, G = Gastropod

Table 3.8 (Cont'd). *The abundant species at every sampling zone.*

Sampling zone ST	Group	Species	mean density (ind. m ⁻²)	relative abundance (%)	cumulative relative abundance (%)
High	G	<i>Batillaria multiformis</i>	585	73	73
	G	<i>Monodonta labio</i>	81	10	83
Mid	Bi	<i>Saccostrea cucullata</i>	162	31	31
	G	<i>Batillaria multiformis</i>	131	25	55
	G	<i>Monodonta labio</i>	62	12	67
Low	Bi	<i>Saccostrea cucullata</i>	49	32	32
	G	<i>Cerithidea djadjariensis</i>	24	16	48
	G	<i>Batillaria zonalis</i>	23	15	64

Bi = Bivalve, G = Gastropod

Table 3.9. Mean values of number of species, density, Shannon-Weaver Diversity Index (H') and Pielou's Species Evenness (J) at every tidal level and sampling zone

Sampling zone	Tidal level	Mean number of species (spp. 0.25 m ⁻²)	Mean density (ind. m ⁻²)	Mean H'	Mean H' across tidal level	Mean J	Mean J across tidal level
TC1	H	6	656	0.63	1.17	0.34	0.53
	M	9	533	1.36		0.61	
	L	11	417	1.52		0.65	
TC2	H	7	245	1.32	1.53	0.73	0.75
	M	10	270	1.69		0.74	
	L	9	211	1.57		0.77	
TC3	H	6	686	0.92	1.13	0.54	0.58
	M	7	376	1.13		0.62	
	L	10	879	1.34		0.58	
ST	H	10	800	1.06	1.31	0.45	0.61
	M	14	528	1.84		0.71	
	L	6	152	1.03		0.68	

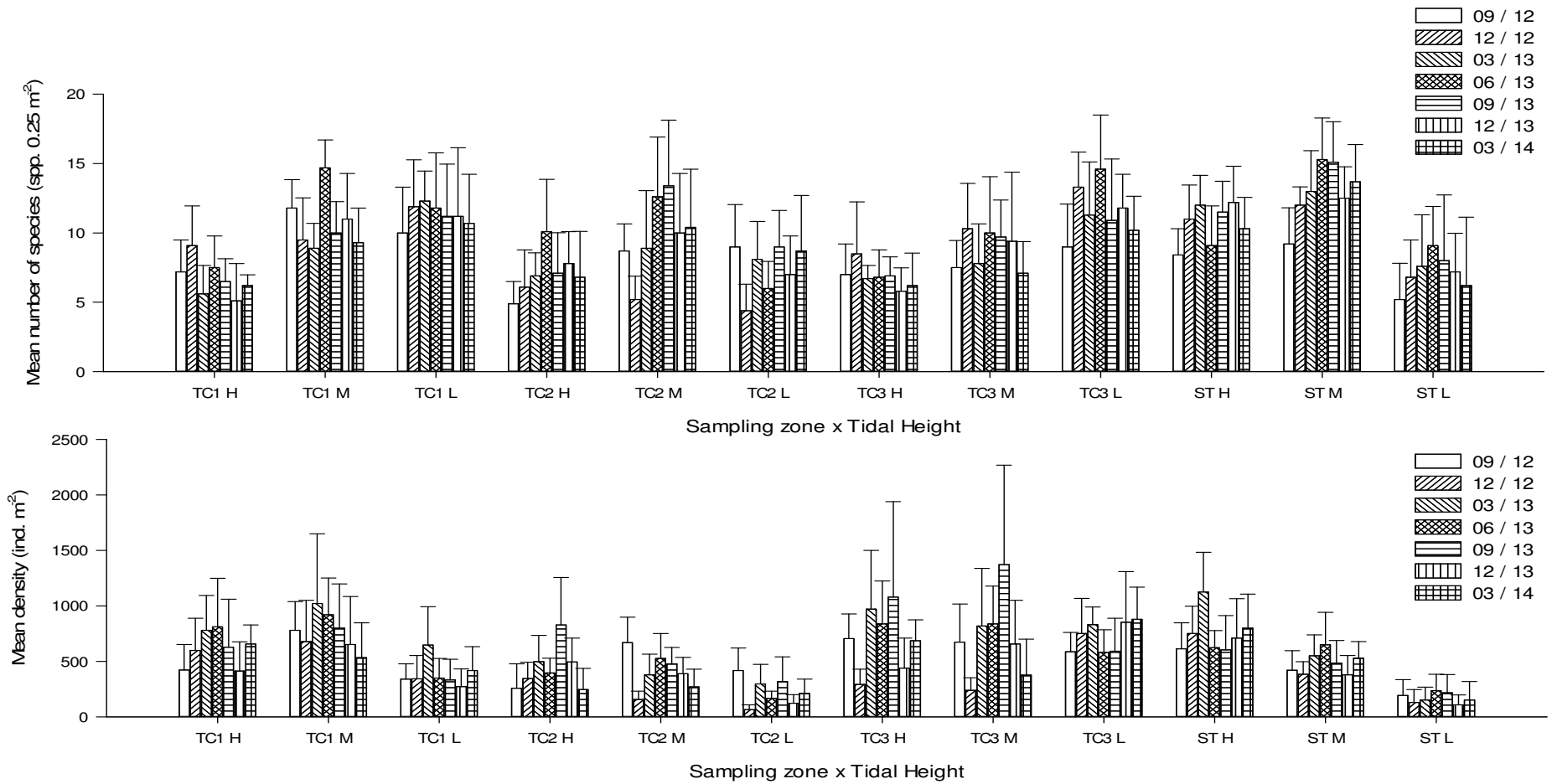


Figure 3.9. Temporal changes of number of species, density, Shannon-Weaver Diversity Index (H') and Pielou's Species Evenness (J) (mean \pm SD) at every tidal level and sampling zone

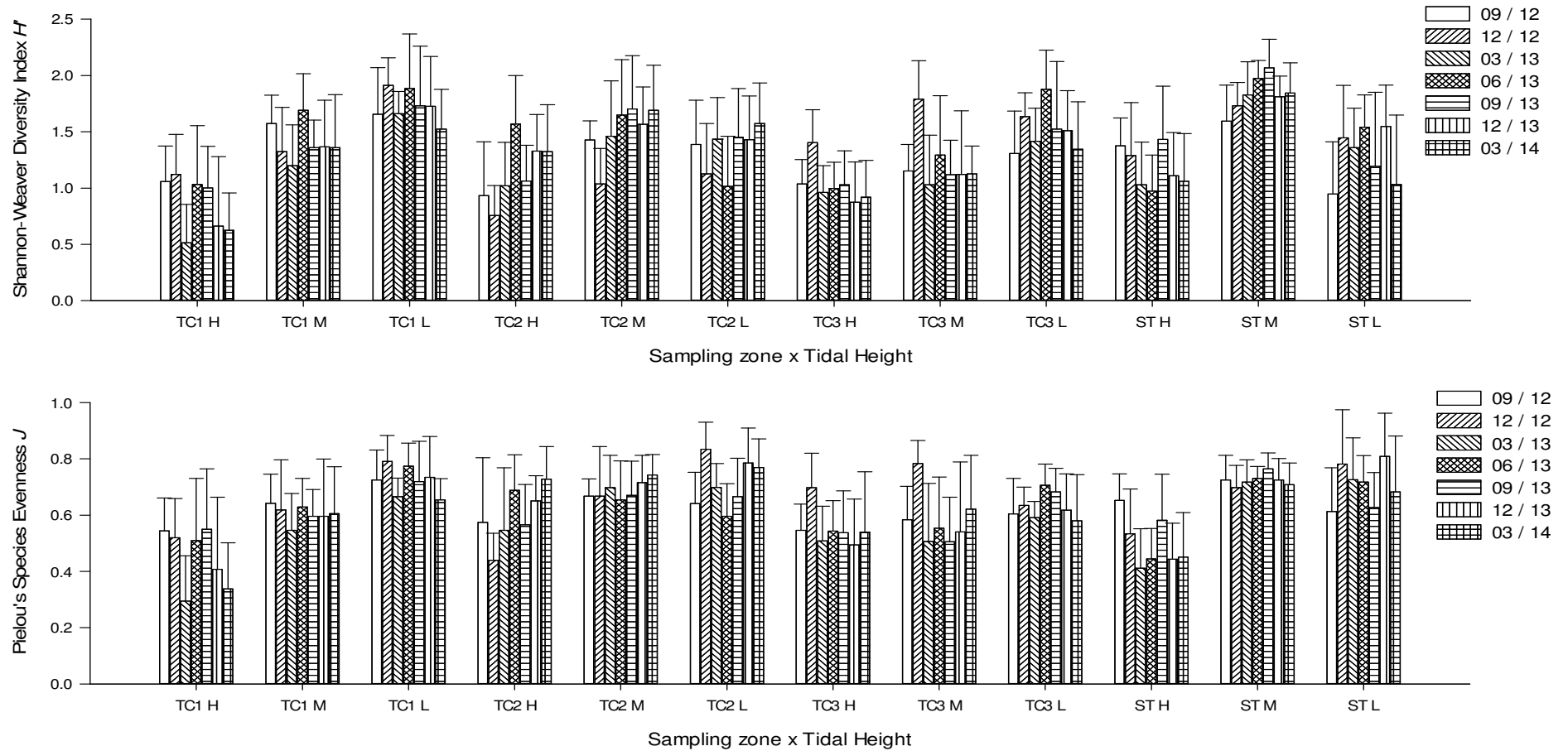


Figure 3.9 (Cont'd). Temporal changes of number of species, density, Shannon-Weaver Diversity Index (H') and Pielou's Species Evenness (J) (mean \pm SD) at every tidal level and sampling zone

Annex I Location of sampling zones (map from ATKINS China Ltd.)



Annex II Taxonomic resolution of every recorded species of intertidal soft shore community survey

Kingdom	Phylum	Class	Order	Family	Species
Animalia	Annelida	Clitellata			Marine oligochaete spp.
Animalia	Annelida	Polychaeta	Eunicida	Onuphidae	Onuphidae spp.
Animalia	Annelida	Polychaeta	Phyllodocida	Glyceridae	Glyceridae spp.
Animalia	Annelida	Polychaeta	Phyllodocida	Goniadidae	Goniadidae spp.
Animalia	Annelida	Polychaeta	Phyllodocida	Nereididae	Nereididae spp.
Animalia	Annelida	Polychaeta	Phyllodocida	Polynoidae	Polynoidae spp.
Animalia	Annelida	Polychaeta	Sabellida	Oweniidae	Oweniidae spp.
Animalia	Annelida	Polychaeta	Terebellida	Ampharetidae	Ampharetidae spp.
Animalia	Annelida	Polychaeta	Terebellida	Pectinariidae	Pectinariidae spp.
Animalia	Annelida	Polychaeta		Maldanidae	Maldanidae spp.
Animalia	Arthropoda	Malacostraca	Amphipoda		Amphipoda spp.
Animalia	Arthropoda	Malacostraca	Decapoda	Grapsidae	<i>Metopograpsus latifrons</i>
Animalia	Arthropoda	Malacostraca	Decapoda	Ocypodidae	<i>Macrophthalmus erato</i>
Animalia	Arthropoda	Malacostraca	Decapoda	Ocypodidae	<i>Uca lactea</i>
Animalia	Arthropoda	Malacostraca	Decapoda	Ocypodidae	<i>Uca</i> sp.
Animalia	Arthropoda	Malacostraca	Decapoda	Paguridae	<i>Pagurus dubius</i>
Animalia	Arthropoda	Malacostraca	Decapoda	Penaeidae	<i>Penaeus</i> sp.
Animalia	Arthropoda	Malacostraca	Decapoda	Sesarmidae	<i>Nanosesarma minutum</i>
Animalia	Arthropoda	Malacostraca	Decapoda	Varunidae	<i>Hemigrapsus penicillatus</i>
Animalia	Arthropoda	Malacostraca	Isopoda		Isopoda spp.
Animalia	Arthropoda	Maxillopoda	Sessilia	Balanidae	<i>Balanus amphitrite</i>
Animalia	Chordata	Actinopterygii	Perciformes	Blenniidae	<i>Omobranchus fasciolatoceps</i>
Animalia	Cnidaria				Sea anemone spp.
Animalia	Echinodermata	Holothuroidea			Sea cucumber spp.
Animalia	Mollusca	Bivalvia	Anomalodesmata	Laternulidae	<i>Laternula anatina</i>
Animalia	Mollusca	Bivalvia	Arcoida	Arcidae	<i>Barbatia signata</i>
Animalia	Mollusca	Bivalvia	Arcoida	Arcidae	<i>Barbatia virescens</i>
Animalia	Mollusca	Bivalvia	Mytiloidea	Mytilidae	<i>Xenostrobus atrata</i>
Animalia	Mollusca	Bivalvia	Ostreoida	Ostreidae	<i>Crassostrea ariakensis</i>
Animalia	Mollusca	Bivalvia	Ostreoida	Ostreidae	<i>Saccostrea cucullata</i>
Animalia	Mollusca	Bivalvia	Veneroida	Corbiculidae	<i>Geloina erosa</i>
Animalia	Mollusca	Bivalvia	Veneroida	Veneridae	<i>Circe</i> sp.
Animalia	Mollusca	Bivalvia	Veneroida	Veneridae	<i>Cyclina sinesis</i>

Annex II (Cont'd) *Taxonomic resolution of every recorded species of intertidal soft shore community survey*

Kingdom	Phylum	Class	Order	Family	Species
Animalia	Mollusca	Bivalvia	Veneroida	Veneridae	<i>Meretrix meretrix</i>
Animalia	Mollusca	Bivalvia	Veneroida	Veneridae	<i>Ruditapes philippinarum</i>
Animalia	Mollusca	Gastropoda	Caenogastropoda	Batillariidae	<i>Batillaria bornii</i>
Animalia	Mollusca	Gastropoda	Caenogastropoda	Batillariidae	<i>Batillaria multiformis</i>
Animalia	Mollusca	Gastropoda	Caenogastropoda	Batillariidae	<i>Batillaria zonalis</i>
Animalia	Mollusca	Gastropoda	Caenogastropoda	Planaxidae	<i>Planaxis sulcatus</i>
Animalia	Mollusca	Gastropoda	Caenogastropoda	Potamididae	<i>Cerithidea cingulata</i>
Animalia	Mollusca	Gastropoda	Caenogastropoda	Potamididae	<i>Cerithidea djarjariensis</i>
Animalia	Mollusca	Gastropoda	Caenogastropoda	Potamididae	<i>Cerithidea rhizophorarum</i>
Animalia	Mollusca	Gastropoda	Caenogastropoda	Potamididae	<i>Terebralia sulcata</i>
Animalia	Mollusca	Gastropoda	Cycloneritimorpha	Neritidae	<i>Clithon faba</i>
Animalia	Mollusca	Gastropoda	Cycloneritimorpha	Neritidae	<i>Clithon oualaniensis</i>
Animalia	Mollusca	Gastropoda	Cycloneritimorpha	Neritidae	<i>Nerita polita</i>
Animalia	Mollusca	Gastropoda	Littorinimorpha	Assimineidae	<i>Assiminea lutea</i>
Animalia	Mollusca	Gastropoda	Littorinimorpha	Littorinidae	<i>Littoraria articulata</i>
Animalia	Mollusca	Gastropoda	Littorinimorpha	Littorinidae	Peasiella spp.
Animalia	Mollusca	Gastropoda	Neogastropoda	Buccinidae	<i>Pisania ignea</i>
Animalia	Mollusca	Gastropoda	Neogastropoda	Muricidae	<i>Thais luteostoma</i>
Animalia	Mollusca	Gastropoda	Neogastropoda	Nassariidae	<i>Nassarius festivus</i>
Animalia	Mollusca	Gastropoda	Neogastropoda	Nassariidae	<i>Nassarius hepaticus</i>
Animalia	Mollusca	Gastropoda	Neogastropoda	Nassariidae	<i>Nassarius</i> sp.
Animalia	Mollusca	Gastropoda		Lottiidae	<i>Nipponacmea concinna</i>
Animalia	Mollusca	Gastropoda		Lottiidae	<i>Patelloida pygmaea</i>
Animalia	Mollusca	Gastropoda		Nacellidae	<i>Cellana grata</i>
Animalia	Mollusca	Gastropoda		Nacellidae	<i>Cellana toreuma</i>
Animalia	Mollusca	Gastropoda		Trochidae	<i>Euchelus scaber</i>
Animalia	Mollusca	Gastropoda		Trochidae	<i>Monodonta labio</i>
Animalia	Mollusca	Gastropoda		Turbinidae	<i>Chlorostoma argyrostoma</i>
Animalia	Mollusca	Gastropoda		Turbinidae	<i>Lunella coronata</i>
Animalia	Mollusca	Polyplacophora	Chitonida	Ischnochitonidae	<i>Lepidozona</i> sp.
Animalia	Mollusca	Scaphopoda	Dentaliida	Dentaliidae	<i>Dentalium sinuosum</i>
Animalia	Nemertea				Nemertea spp.
Animalia	Sipuncula	Sipunculidea	Golfingiida	Sipunculidae	<i>Sipunculus nudus</i>

Annex III List of recorded fauna of intertidal soft shore community survey at every sampling zone

Mar. 2014 Sampling zone TC 1 High tidal level (2.0 m above C.D.)

Gp	Taxon	1		2		3		4		5		6		7		8		9		10		sub-total
		Q	C	Q	C	Q	C	Q	C	Q	C	Q	C	Q	C	Q	C	Q	C	Q	C	
Ba	<i>Balanus amphitrite</i>	1																				1
Bi	<i>Geloina erosa</i>						1													1		2
Bi	<i>Saccostrea cucullata</i>	6				8		2				3							5		6	30
Bi	<i>Xenostrobus atrata</i>	5																	1			6
C	<i>Hemigrapsus penicillatus</i>			1																		1
G	<i>Batillaria multiformis</i>	103		109		50	2	96		230		136		163		78		158		191		1316
G	<i>Batillaria zonalis</i>	1																				1
G	<i>Cerithidea cingulata</i>					26	7							1		3		1				38
G	<i>Cerithidea djadjariensis</i>	7		4		87	5	38		2				1		1		6		1		152
G	<i>Cerithidea rhizophorarum</i>					4	2	2					3			3						14
G	<i>Clithon faba</i>															3		1				4
G	<i>Clithon oualaniensis</i>					1								1		3						5
G	<i>Littoraria articulata</i>			1						1		2										4
G	<i>Monodonta labio</i>	5		11				6		6		4		11		6		3		9		61
G	<i>Nassarius</i> sp.													1								1
G	<i>Patelloida pygmaea</i>																				1	1
OI	Marine oligochaete spp.									1												1

Annex III (Cont'd) *List of recorded fauna of intertidal soft shore community survey at every sampling zone*

Mar. 2014 Sampling zone TC 1 High tidal level (2.0 m above C.D.)

Gp	Taxon	1		2		3		4		5		6		7		8		9		10		sub-total
		Q	C	Q	C	Q	C	Q	C	Q	C	Q	C	Q	C	Q	C	Q	C			
P	Maldanidae spp.									1												1
P	Nereididae spp.			1																		1
																					Total	1640

Annex III (Cont'd) List of recorded fauna of intertidal soft shore community survey at every sampling zone

Mar 2014		Sampling zone TC 1		Mid tidal level (1.5 m above C.D.)																				
				1		2		3		4		5		6		7		8		9		10		sub-total
Gp	Taxon	Q	C	Q	C	Q	C	Q	C	Q	C	Q	C	Q	C	Q	C	Q	C	Q	C	Q	C	sub-total
Bi	<i>Barbatia signata</i>			3						1		2												6
Bi	<i>Barbatia virescens</i>	1																						1
Bi	<i>Geloina erosa</i>																					1		1
Bi	<i>Saccostrea cucullata</i>	45		74		6		2		22		12		12		11		12		15				211
Bi	<i>Xenostrobus atrata</i>			2		2				2		6		2				1						15
C	<i>Hemigrapsus penicillatus</i>	1						1																2
C	<i>Nanosesarma minutum</i>			1						1														2
C	<i>Uca lactea</i>																				1			1
Ec	Sea cucumber spp.	1		1																				2
G	<i>Batillaria multiformis</i>	9		7		15	2	6		50		207		244		81		50		25				696
G	<i>Batillaria zonalis</i>					5	1			1														7
G	<i>Cellana grata</i>															1		1						2
G	<i>Cellana toreuma</i>															2		1						3
G	<i>Cerithidea cingulata</i>					8	3	1										3		1				16
G	<i>Cerithidea djadjariensis</i>	2		1		57	12			1		1		1		7		8		16				106
G	<i>Cerithidea rhizophorarum</i>															5		4		4				13
G	<i>Clithon faba</i>	1														1		10						12
G	<i>Clithon oualaniensis</i>					15	1									4		2						22
G	<i>Lunella coronata</i>	7		2				1		1						5						1		17

Annex III (Cont'd) List of recorded fauna of intertidal soft shore community survey at every sampling zone

Mar 2014		Sampling zone TC 1		Mid tidal level (1.5 m above C.D.)																				
				1		2		3		4		5		6		7		8		9		10		sub-total
Gp	Taxon	Q	C	Q	C	Q	C	Q	C	Q	C	Q	C	Q	C	Q	C	Q	C	Q	C	Q	C	sub-total
G	<i>Monodonta labio</i>	16		19		6		8		38		16		28		31		16		8				186
G	<i>Nassarius</i> sp.																			1				1
G	<i>Nerita polita</i>																			1				1
G	<i>Nipponacmea concinna</i>			1				1																2
G	<i>Patelloida pygmaea</i>													1						1		1		3
Hc	<i>Pagurus dubius</i>							1																1
P	Ampharetidae spp.									1														1
P	Pectinariidae spp.						1																	1
P	Polynoidae spp.			1																				1
																						Total	1332	

Annex III (Cont'd) List of recorded fauna of intertidal soft shore community survey at every sampling zone

Mar 2014 Sampling zone TC 1 Low tidal level (1.0 m above C.D.)

Gp	Taxon	1		2		3		4		5		6		7		8		9		10		sub-total
		Q	C	Q	C	Q	C	Q	C	Q	C	Q	C	Q	C	Q	C	Q	C	Q	C	
Ba	<i>Balanus amphitrite</i>														1							1
Bi	<i>Barbatia signata</i>	5		2				1							2				1		1	12
Bi	<i>Barbatia virescens</i>	2													1						10	13
Bi	<i>Ruditapes philippinarum</i>																		3		2	5
Bi	<i>Saccostrea cucullata</i>	79		42		14		40							50		37		34		36	332
Bi	<i>Xenostrobus atrata</i>	3																				3
C	<i>Hemigrapsus penicillatus</i>			2											1						1	4
C	<i>Nanosesarma minutum</i>														1							1
Ec	Sea cucumber spp.																					1
G	<i>Batillaria multiformis</i>	21		1		3		15		1		3		30		125		31		41		271
G	<i>Batillaria zonalis</i>	2		2		7		1		15												27
G	<i>Cellana grata</i>																		1			1
G	<i>Cellana toreuma</i>																				3	3
G	<i>Cerithidea cingulata</i>									1				2		2						5
G	<i>Cerithidea djadjariensis</i>	1		14				4		28		30	2	6		8					4	97
G	<i>Cerithidea rhizophorarum</i>			1						1												2
G	<i>Clithon faba</i>													2		1					4	7
G	<i>Clithon oualaniensis</i>							2						12		11		1			3	29
G	<i>Dentalium sinuosum</i>									1												1

Annex III (Cont'd) List of recorded fauna of intertidal soft shore community survey at every sampling zone

Mar 2014 Sampling zone TC 1 Low tidal level (1.0 m above C.D.)

Gp	Taxon	1		2		3		4		5		6		7		8		9		10		sub-total
		Q	C	Q	C	Q	C	Q	C	Q	C	Q	C	Q	C	Q	C	Q	C	Q	C	
G	<i>Lepidozona</i> sp.																				1	1
G	<i>Lunella coronata</i>	17		8				10						10		11		2		10		68
G	<i>Monodonta labio</i>	1		1				26		1				17		6		26		29		107
G	<i>Nassarius festivus</i>			1		1								1		2		1				6
G	<i>Nassarius hepaticus</i>									3		5										8
G	<i>Nassarius</i> sp.									4												4
G	<i>Nerita polita</i>	1		2										1				3				7
G	<i>Nipponacmea concinna</i>							1						1				1				3
G	<i>Patelloida pygmaea</i>																			3		3
G	<i>Thais luteostoma</i>	1																				1
Hc	<i>Pagurus dubius</i>	1																		1		2
P	Ampharetidae spp.						1															1
P	Goniadidae spp.						1															1
P	Maldanidae spp.						2						1									3
P	Onuphidae spp.						1															1
Sp	<i>Sipunculus nudus</i>	4		7																		11
																					Total	1042

Annex III (Cont'd) List of recorded fauna of intertidal soft shore community survey at every sampling zone

Mar 2014 Sampling zone TC 2 High tidal level (2.0 m above C.D.)

Gp	Taxon	1		2		3		4		5		6		7		8		9		10		sub-total
		Q	C	Q	C	Q	C	Q	C	Q	C	Q	C	Q	C	Q	C	Q	C	Q	C	
Ba	<i>Balanus amphitrite</i>									1												1
Bi	<i>Barbatia virescens</i>																		1			1
Bi	<i>Saccostrea cucullata</i>							12		21		3		3		13		6				58
C	<i>Metopograpsus latifrons</i>									1												1
C	<i>Nanosesarma minutum</i>									1												1
F	<i>Omobranchus fasciatoceps</i>									1												1
G	<i>Batillaria bornii</i>																	1				1
G	<i>Batillaria multiformis</i>	1		1				2		12		27		2	18	35	1	54		52	4	209
G	<i>Batillaria zonalis</i>											2		1	7	19		8	2	18		57
G	<i>Cerithidea cingulata</i>					1	1	2		1		2	2		3	6	10	3	10	10	6	57
G	<i>Cerithidea djadjariensis</i>	3		7		4	9	6		6		20	9	9	20	39	14	10	11	17	7	191
G	<i>Cerithidea rhizophorarum</i>	1					1															2
G	<i>Euchelus scaber</i>									1												1
G	<i>Lunella coronata</i>									2		1			1			5				9
G	<i>Monodonta labio</i>						1			1		1			3	1						7
G	<i>Nassarius</i> sp.											1		1							1	3
G	<i>Nerita polita</i>							1		2												3
G	<i>Terebralia sulcata</i>	1								1												2
OI	Marine oligochaete spp.	2													1							3

Annex III (Cont'd) List of recorded fauna of intertidal soft shore community survey at every sampling zone

Mar 2014 Sampling zone TC 2 High tidal level (2.0 m above C.D.)

Gp	Taxon	1		2		3		4		5		6		7		8		9		10		sub-total	
		Q	C	Q	C	Q	C	Q	C	Q	C	Q	C	Q	C	Q	C	Q	C				
P	Maldanidae spp.						1															1	
P	Nereididae spp.													1									1
Sp	<i>Sipunculus nudus</i>									2													2
																					Total	612	

Annex III (Cont'd) List of recorded fauna of intertidal soft shore community survey at every sampling zone

Mar 2014 Sampling zone TC 2 Mid tidal level (1.5 m above C.D.)

Gp	Taxon	1		2		3		4		5		6		7		8		9		10		sub-total
		Q	C	Q	C	Q	C	Q	C	Q	C	Q	C	Q	C	Q	C	Q	C	Q	C	
A	<i>Amphipoda</i> spp.																				1	1
Ba	<i>Balanus amphitrite</i>	1								1											2	4
Bi	<i>Barbatia signata</i>																2				1	3
Bi	<i>Barbatia virescens</i>													1		5						6
Bi	<i>Cyclina sinesis</i>			1			1				1										1	4
Bi	<i>Ruditapes philippinarum</i>					1										1						2
Bi	<i>Saccostrea cucullata</i>	36		31				27				7		27		29		16			43	216
Bi	<i>Xenostrobus atrata</i>			1										3		1					1	6
C	<i>Hemigrapsus penicillatus</i>							2						2		1						5
C	<i>Nanosesarma minutum</i>															3						3
G	<i>Batillaria bornii</i>													1				1			1	3
G	<i>Batillaria multiformis</i>			10						1	1	1		7		8		7	1	30		66
G	<i>Batillaria zonalis</i>					2		2		10		7	1	5		25	1	18		26		97
G	<i>Cerithidea cingulata</i>						1			1			2		4	1		2	4	2		17
G	<i>Cerithidea djadjariensis</i>	2		7		5	4	4			3	5	9	7	6	8	3	20	11	13	5	112
G	<i>Cerithidea rhizophorarum</i>																		1			1
G	<i>Clithon oualaniensis</i>					1												5		1		7
G	<i>Lunella coronata</i>			1		2		6		1				6		8		3		8	1	36
G	<i>Monodonta labio</i>	15		24				5						6		9				1		60

Annex III (Cont'd) List of recorded fauna of intertidal soft shore community survey at every sampling zone

Mar 2014 Sampling zone TC 2 Mid tidal level (1.5 m above C.D.)

Gp	Taxon	1		2		3		4		5		6		7		8		9		10		sub-total	
		Q	C	Q	C	Q	C	Q	C	Q	C	Q	C	Q	C	Q	C	Q	C	Q	C		
G	<i>Nassarius festivus</i>																				1	1	2
G	<i>Nassarius</i> sp.			1																			1
G	<i>Nerita polita</i>							1						1		1						2	5
G	<i>Nipponacmea concinna</i>													2									2
G	<i>Patelloida pygmaea</i>															1							1
Hc	<i>Pagurus dubius</i>			1										1									2
Is	Isopoda spp.																				1		1
Ne	Nemertea spp.																			1			1
P	Maldanidae spp.			1			2				1		1		1				1	1			8
P	Onuphidae spp.						1																1
P	Oweniidae spp.						1																1
Sp	<i>Sipunculus nudus</i>							2															2
																					Total	676	

Annex III (Cont'd) List of recorded fauna of intertidal soft shore community survey at every sampling zone

Mar 2014 Sampling zone TC 2 Low tidal level (1.0 m above C.D.)

Gp	Taxon	1		2		3		4		5		6		7		8		9		10		sub-total
		Q	C	Q	C	Q	C	Q	C	Q	C	Q	C	Q	C	Q	C	Q	C	Q	C	
Ba	<i>Balanus amphitrite</i>					12				3				1		3						19
Bi	<i>Barbatia virescens</i>															2		3				5
Bi	<i>Cyclina sinesis</i>													1								1
Bi	<i>Ruditapes philippinarum</i>					2																2
Bi	<i>Saccostrea cucullata</i>	5				18				5		1		6		33		15				83
C	<i>Hemigrapsus penicillatus</i>					2												1				3
G	<i>Batillaria bornii</i>													1		1						2
G	<i>Batillaria multiformis</i>			1		15		5		3		5		15		4		9		4		61
G	<i>Batillaria zonalis</i>	3	1	8		14		8		5		17		27	1	21		46		40	2	193
G	<i>Cellana toreuma</i>													1								1
G	<i>Cerithidea cingulata</i>		1							1		1			1		1			3	1	9
G	<i>Cerithidea djadjariensis</i>		10	3	1	5		5	2	1	3	7	3	1	4	5	1	4		24	3	82
G	<i>Lunella coronata</i>					6								2		18		4				30
G	<i>Monodonta labio</i>															3						3
G	<i>Nassarius festivus</i>								1					3								4
G	<i>Nassarius hepaticus</i>																				1	1
G	<i>Nerita polita</i>					1										1		1				3
G	<i>Patelloida pygmaea</i>													1								1
G	<i>Thais luteostoma</i>													2				1				3

Annex III (Cont'd) List of recorded fauna of intertidal soft shore community survey at every sampling zone

Mar 2014 Sampling zone TC 2 Low tidal level (1.0 m above C.D.)

Gp	Taxon	1		2		3		4		5		6		7		8		9		10		sub-total
		Q	C	Q	C	Q	C	Q	C	Q	C	Q	C	Q	C	Q	C	Q	C			
Hc	<i>Pagurus dubius</i>			1													1					2
Ne	Nemertea spp.																1					1
P	Glyceridae spp.				1																	1
P	Maldanidae spp.				1						1										1	3
P	Nereididae spp.					1															1	2
P	Onuphidae spp.				1						1		1		1				1			5
S	<i>Penaeus</i> sp.																1					1
Sp	<i>Sipunculus nudus</i>					2								3		2						7
																					Total	528

Annex III (Cont'd) List of recorded fauna of intertidal soft shore community survey at every sampling zone

Mar 2014 Sampling zone TC 3 High tidal level (2.0 m above C.D.)

Gp	Taxon	1		2		3		4		5		6		7		8		9		10		sub-total
		Q	C	Q	C	Q	C	Q	C	Q	C	Q	C	Q	C	Q	C	Q	C	Q	C	
Bi	<i>Circe</i> sp.																				1	1
Bi	<i>Cyclina sinesis</i>																		1			1
Bi	<i>Geloina erosa</i>																2				1	3
Bi	<i>Laternula anatina</i>																	1				1
Bi	<i>Saccostrea cucullata</i>	33				5																38
Bi	<i>Xenostrobus atrata</i>	1																				1
C	<i>Hemigrapsus penicillatus</i>													1								1
C	<i>Nanosesarma minutum</i>																				1	1
G	<i>Batillaria multiformis</i>	115	3	90		105	3	52	1	146	2	155		190		147	3	76		22		1110
G	<i>Batillaria zonalis</i>					3																3
G	<i>Cerithidea cingulata</i>	7	3	20	1	41	1	19	1	1	2	5		1		8	4	5	1	20	4	144
G	<i>Cerithidea djadjariensis</i>	17	4	31	2	44		25	6	5	4	66	11	10	2	32	5	29	1	66	5	365
G	<i>Cerithidea rhizophorarum</i>		1	4		3	1				1	5				3		3		2	1	24
G	<i>Clithon faba</i>													2								2
G	<i>Lunella coronata</i>	2				1				1				1		2						7
G	<i>Monodonta labio</i>	2																				2
G	<i>Nassarius</i> sp.	3																				3
G	<i>Nerita polita</i>	1																				1
P	Ampharetidae spp.						3													1		4

Annex III (Cont'd) *List of recorded fauna of intertidal soft shore community survey at every sampling zone*

Mar 2014 Sampling zone TC 3 High tidal level (2.0 m above C.D.)

Gp	Taxon	1		2		3		4		5		6		7		8		9		10		sub-total
		Q	C	Q	C	Q	C	Q	C	Q	C	Q	C	Q	C	Q	C	Q	C			
P	Maldanidae spp.																		1			1
Sp	<i>Sipunculus nudus</i>	1																				1
																				Total	1714	

Annex III (Cont'd) List of recorded fauna of intertidal soft shore community survey at every sampling zone

Mar 2014 Sampling zone TC 3 Mid tidal level (1.5 m above C.D.)

Gp	Taxon	1		2		3		4		5		6		7		8		9		10		sub-total
		Q	C	Q	C	Q	C	Q	C	Q	C	Q	C	Q	C	Q	C	Q	C	Q	C	
Bi	<i>Barbatia virescens</i>												1									1
Bi	<i>Cyclina sinesis</i>									1												1
Bi	<i>Saccostrea cucullata</i>																5					5
Bi	<i>Xenostrobus atrata</i>					1										1						2
C	<i>Metopograpsus latifrons</i>			1																		1
C	<i>Nanosesarma minutum</i>	1		3										1					1			6
Ec	Sea cucumber spp.					1															1	2
G	<i>Batillaria multiformis</i>	29		11		27				4		23		5		238		125		72		534
G	<i>Cerithidea cingulata</i>															1		4				5
G	<i>Cerithidea djadjariensis</i>					1		1				1		1		16		23		6		49
G	<i>Cerithidea rhizophorarum</i>											1								4		5
G	<i>Clithon oualaniensis</i>															1		1		1		3
G	<i>Littoraria articulata</i>			1						1		4		5		1		1				13
G	<i>Lunella coronata</i>	8		2		10		1		1		9		2		2		3		8		46
G	<i>Monodonta labio</i>	43		46		18				22		43		16		13		12		30		243
G	<i>Nassarius festivus</i>					2														1		3
G	<i>Nerita polita</i>			10						1		2										13
G	<i>Patelloida pygmaea</i>																		1			1
G	<i>Peasiella</i> spp.																		1			1

Annex III (Cont'd) List of recorded fauna of intertidal soft shore community survey at every sampling zone

Mar 2014 Sampling zone TC 3 Mid tidal level (1.5 m above C.D.)

Gp	Taxon	1		2		3		4		5		6		7		8		9		10		sub-total
		Q	C	Q	C	Q	C	Q	C	Q	C	Q	C	Q	C	Q	C	Q	C			
G	<i>Planaxis sulcatus</i>			1																		1
Hc	<i>Pagurus dubius</i>												1									1
P	Nereididae spp.					2																2
P	Polynoidae spp.							1														1
																					Total	939

Annex III (Cont'd) List of recorded fauna of intertidal soft shore community survey at every sampling zone

Mar 2014 Sampling zone TC 3 Low tidal level (1.0 m above C.D.)

Gp	Taxon	1		2		3		4		5		6		7		8		9		10		sub-total
		Q	C	Q	C	Q	C	Q	C	Q	C	Q	C	Q	C	Q	C	Q	C	Q	C	
Ba	<i>Balanus amphitrite</i>							15														15
Bi	<i>Barbatia signata</i>	2		9		17								1					1			30
Bi	<i>Barbatia virescens</i>	10		6		3																19
Bi	<i>Geloina erosa</i>	3		1										1								5
Bi	<i>Meretrix meretrix</i>	1																				1
Bi	<i>Saccostrea cucullata</i>	86		134		57		12		37		30		53		10		22		23		464
Bi	<i>Xenostrobus atrata</i>	5		6		19		3				1		8								42
C	<i>Uca</i> sp.		1																			1
G	<i>Assiminea lutea</i>													1								1
G	<i>Batillaria multiformis</i>	29		6		5		75		2	1	24		72		223		231	1	271		940
G	<i>Batillaria zonalis</i>	26		13	1	5		28		8		11	1	2								95
G	<i>Cerithidea cingulata</i>	12			1	23		10		1		4	7	20	1	23	2	5	1	11		121
G	<i>Cerithidea djadjariensis</i>	16	2	4	3	94		39		46	3	48	6	55	1	39	5	30	2	13		406
G	<i>Cerithidea rhizophorarum</i>					2				3		4	1	4		1	1	1		1		18
G	<i>Clithon oualaniensis</i>							1								1				1		3
G	<i>Lunella coronata</i>															3						3
G	<i>Monodonta labio</i>															1		2		1		4
G	<i>Nassarius festivus</i>					2																2
G	<i>Nassarius</i> sp.	2												1			1					4

Annex III (Cont'd) List of recorded fauna of intertidal soft shore community survey at every sampling zone

Mar 2014 Sampling zone TC 3 Low tidal level (1.0 m above C.D.)

Gp	Taxon	1		2		3		4		5		6		7		8		9		10		sub-total
		Q	C	Q	C	Q	C	Q	C	Q	C	Q	C	Q	C	Q	C	Q	C	Q	C	
G	<i>Nipponacmea concinna</i>	2		1						3												6
G	<i>Patelloida pygmaea</i>											1							1		2	4
Ol	Marine oligochaete spp.															1					1	2
P	Maldanidae spp.	1										1										2
P	Nereididae spp.														1							1
P	Polynoidae spp.														1							1
Sp	<i>Sipunculus nudus</i>	2				3		1		2												8
																					Total	2198

Annex III (Cont'd) List of recorded fauna of intertidal soft shore community survey at every sampling zone

Mar 2014		Sampling zone ST		High tidal level (2.0 m above C.D.)																			
Gp	Taxon	1		2		3		4		5		6		7		8		9		10		sub-total	
		Q	C	Q	C	Q	C	Q	C	Q	C	Q	C	Q	C	Q	C	Q	C	Q	C		
Bi	<i>Barbatia signata</i>												1									1	
Bi	<i>Geloina erosa</i>			1																		1	
Bi	<i>Saccostrea cucullata</i>	3		8		1		6		3		40		16		29		5		14		125	
Bi	<i>Xenostrobus atrata</i>	2										3										5	
C	<i>Hemigrapsus penicillatus</i>			1																		1	
C	<i>Macrophthalmus erato</i>						1															1	
C	<i>Metopograpsus latifrons</i>											1										1	
C	<i>Nanosesarma minutum</i>											3		1								4	
Cn	Sea anemone spp.															2						2	
G	<i>Batillaria bornii</i>	6		5		4		1		2		1		1		2		5		3		30	
G	<i>Batillaria multiformis</i>	197		234		148		297		71		73		50		129		69		194		1462	
G	<i>Batillaria zonalis</i>	2		1																		3	
G	<i>Cellana toreuma</i>	1				3						1		8		3						16	
G	<i>Cerithidea cingulata</i>			2						13						1		6				22	
G	<i>Cerithidea djadjariensis</i>	2		2		3				5		4		2		2		3				23	
G	<i>Cerithidea rhizophorarum</i>							1		1								1				3	
G	<i>Clithon faba</i>					1								1		2				1		5	
G	<i>Clithon oualaniensis</i>	3		9						2						3		2		14		33	
G	<i>Littoraria articulata</i>	6											2									8	

Annex III (Cont'd) List of recorded fauna of intertidal soft shore community survey at every sampling zone

Mar 2014		Sampling zone ST		High tidal level (2.0 m above C.D.)																			
Gp	Taxon	1		2		3		4		5		6		7		8		9		10		sub-total	
		Q	C	Q	C	Q	C	Q	C	Q	C	Q	C	Q	C	Q	C	Q	C	Q	C		
G	<i>Lunella coronata</i>			1				2		4		7		4		4		6				28	
G	<i>Monodonta labio</i>	13		13		6		28		13		73		24		8		9		16		203	
G	<i>Nerita polita</i>	4				1				2						2		4				13	
G	<i>Nipponacmea concinna</i>															1				4		5	
G	<i>Patelloida pygmaea</i>									1		1		1				1				4	
G	<i>Peasiella</i> spp.																	1				1	
																					Total	2000	

Annex III (Cont'd) List of recorded fauna of intertidal soft shore community survey at every sampling zone

Mar 2014		Sampling zone ST		Mid tidal level (1.5 m above C.D.)																				
				1		2		3		4		5		6		7		8		9		10		sub-total
Gp	Taxon	Q	C	Q	C	Q	C	Q	C	Q	C	Q	C	Q	C	Q	C	Q	C	Q	C	Q	C	sub-total
Bi	<i>Barbatia signata</i>							3		2										5				10
Bi	<i>Barbatia virescens</i>	1				6		3						1				1		5				17
Bi	<i>Circe</i> sp.																			3				3
Bi	<i>Saccostrea cucullata</i>	49		56		54		21		16		36		40		48		49				35		404
Bi	<i>Xenostrobus atrata</i>	24		1		1				13		1		3						1				44
C	<i>Hemigrapsus penicillatus</i>	1								1						1								3
C	<i>Nanosesarma minutum</i>	1		1										1								1		4
Cn	Sea anemone spp.			1				1												1				3
G	<i>Batillaria bornii</i>	1		2		7		5				4				14		8						41
G	<i>Batillaria multiformis</i>	48		10		17		21		28		94		1		24	1	57				27		328
G	<i>Batillaria zonalis</i>	1		10																				11
G	<i>Cellana grata</i>																			2				2
G	<i>Cellana toreuma</i>					1		1		6		1		1						7				17
G	<i>Cerithidea cingulata</i>	1		4		3		1		1		1		2	1	14	1	2				2		33
G	<i>Cerithidea djadjariensis</i>	7		12		11		5		7		6		31	5	14	1	4				2		105
G	<i>Cerithidea rhizophorarum</i>													2		1								3
G	<i>Clithon faba</i>					2		1																3
G	<i>Clithon oualaniensis</i>			4		4						2				5		2				1		18
G	<i>Euchelus scaber</i>							1																1

Annex III (Cont'd) List of recorded fauna of intertidal soft shore community survey at every sampling zone

Mar 2014		Sampling zone ST		Mid tidal level (1.5 m above C.D.)																				
				1		2		3		4		5		6		7		8		9		10		sub-total
Gp	Taxon	Q	C	Q	C	Q	C	Q	C	Q	C	Q	C	Q	C	Q	C	Q	C	Q	C	Q	C	sub-total
G	<i>Littoraria articulata</i>	1																						1
G	<i>Lunella coronata</i>	7		8		8		8		4		6		13		13		4		6				77
G	<i>Monodonta labio</i>	13		1		28		10		16		13		2		21		39		11				154
G	<i>Nassarius festivus</i>			3				1										1		1				6
G	<i>Nassarius sp.</i>			2																				2
G	<i>Nerita polita</i>									1				2		1		2						6
G	<i>Nipponacmea concinna</i>			1		3		10		1		1						1						17
G	<i>Patelloida pygmaea</i>											2				1								3
Hc	<i>Pagurus dubius</i>			1																				1
P	Glyceridae spp.																			1				1
P	Onuphidae spp.																	1						1
Sp	<i>Sipunculus nudus</i>					1																1		2
																						Total	1321	

Annex III (Cont'd) List of recorded fauna of intertidal soft shore community survey at every sampling zone

Mar 2014		Sampling zone ST																				Low tidal level (1.0 m above C.D.)	
		1		2		3		4		5		6		7		8		9		10		sub-total	
Gp	Taxon	Q	C	Q	C	Q	C	Q	C	Q	C	Q	C	Q	C	Q	C	Q	C	Q	C		
Ba	<i>Balanus amphitrite</i>							6															6
Bi	<i>Barbatia signata</i>	1																	1				2
Bi	<i>Barbatia virescens</i>	2																					2
Bi	<i>Circe</i> sp.										8												8
Bi	<i>Crassostrea ariakensis</i>											1		3									4
Bi	<i>Saccostrea cucullata</i>	42						23				11								47			123
Bi	<i>Xenostrobus atrata</i>	13																					13
C	<i>Hemigrapsus penicillatus</i>	3																					3
C	<i>Nanosesarma minutum</i>													1									1
F	<i>Omobranchus fasciolatoceps</i>																			1			1
G	<i>Batillaria bornii</i>	7										15								1			23
G	<i>Batillaria multiformis</i>	1			2					2	1	2									1		9
G	<i>Batillaria zonalis</i>			17	5			2		3		20		9							2		58
G	<i>Cerithidea cingulata</i>	2						1															3
G	<i>Cerithidea djadjariensis</i>	3										55				1					1	1	61
G	<i>Cerithidea rhizophorarum</i>											5											5
G	<i>Chlorostoma argyrostoma</i>											1											1
G	<i>Euchelus scaber</i>	1																					1
G	<i>Lepidozona</i> sp.											1											1

Annex III (Cont'd) List of recorded fauna of intertidal soft shore community survey at every sampling zone

Mar 2014		Sampling zone ST		Low tidal level (1.0 m above C.D.)																					
				1		2		3		4		5		6		7		8		9		10		sub-total	
Gp	Taxon	Q	C	Q	C	Q	C	Q	C	Q	C	Q	C	Q	C	Q	C	Q	C	Q	C	Q	C		
G	<i>Lunella coronata</i>	5						3						10											36
G	<i>Monodonta labio</i>	2																							2
G	<i>Nassarius festivus</i>	1										1		1		1									5
G	<i>Nerita polita</i>	2																							3
G	<i>Nipponacmea concinna</i>	1																							1
G	<i>Pisania ignea</i>													1											1
G	<i>Thais luteostoma</i>	1																							2
Hc	<i>Pagurus dubius</i>				1											1									2
P	Maldanidae spp.																								2
P	Onuphidae spp.																								1
Sp	<i>Sipunculus nudus</i>																								1
																						Total	381		

Faunal group (Gp) label

Ba: Barnacle; Bi: Bivalve; C: Crab; Cn: Cnidarin; Ec: Echinoderm; F: Fish; G: Gastropod; Hc: Hermit crab; Ne: Nemertean; Ol: Oligochaete;
P: Polychaete; Pl: Platyhelminthes; S: Shrimp & Prawns; Sp: Sipuculan