

Noise Monitoring Data

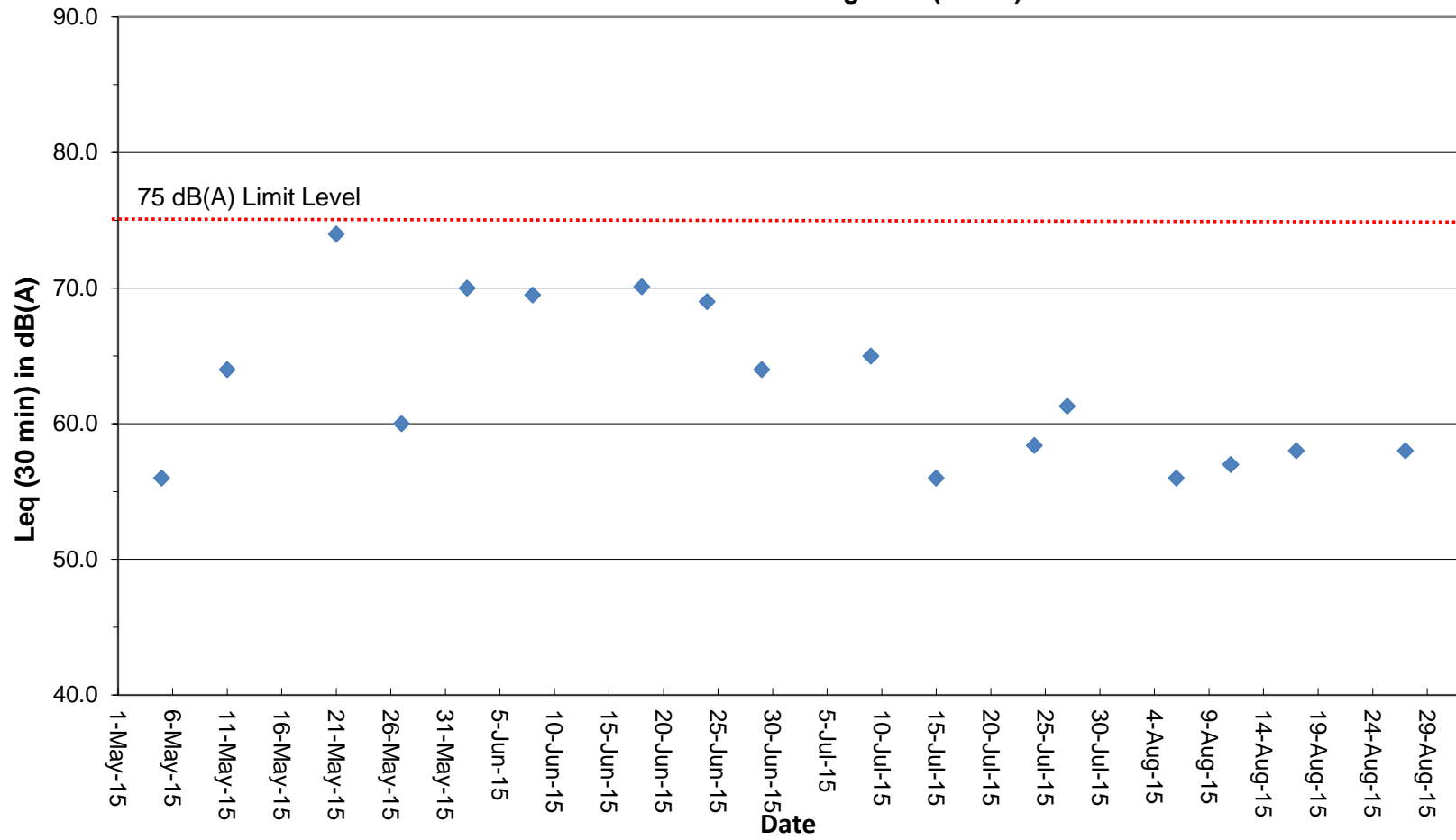
Project	Works	Date (yyyy-mm-dd)	Station	Start Time	Wind Speed, m/s	1st set 5mins	2nd set 5mins	3rd set 5mins	4th set 5mins	5th set 5mins	6th set 5mins	Overall (30mins)*	Unit
HKLR	HY/2011/03	2015-06-02	NMS5	9:52	<5	Leq: 66.8	Leq: 67.6	Leq: 67.7	Leq: 67.9	Leq: 65.6	Leq: 64.2	Leq: 69.8	dB(A)
						L10: 70.0	L10: 70.5	L10: 70.5	L10: 70.5	L10: 69.5	L10: 68.0	L10: 72.9	
						L90: 58.5	L90: 57.0	L90: 58.0	L90: 62.0	L90: 53.5	L90: 52.0	L90: 61.0	
HKLR	HY/2011/03	2015-06-08	NMS5	13:31	<5	Leq: 65.8	Leq: 67.2	Leq: 66.6	Leq: 67.0	Leq: 65.9	Leq: 66.5	Leq: 69.5	dB(A)
						L10: 70.5	L10: 71.5	L10: 71.0	L10: 72.0	L10: 71.5	L10: 71.0	L10: 74.3	
						L90: 52.0	L90: 52.5	L90: 51.5	L90: 50.5	L90: 49.5	L90: 49.5	L90: 54.1	
HKLR	HY/2011/03	2015-06-18	NMS5	13:51	<5	Leq: 68.6	Leq: 68.4	Leq: 66.5	Leq: 63.1	Leq: 67.5	Leq: 66.4	Leq: 70.1	dB(A)
						L10: 72.0	L10: 72.0	L10: 72.0	L10: 68.5	L10: 72.0	L10: 70.0	L10: 74.3	
						L90: 53.0	L90: 51.0	L90: 53.5	L90: 52.0	L90: 53.0	L90: 55.5	L90: 56.2	
HKLR	HY/2011/03	2015-06-24	NMS5	13:01	<5	Leq: 66.2	Leq: 66.4	Leq: 65.6	Leq: 65.1	Leq: 65.1	Leq: 66.7	Leq: 68.9	dB(A)
						L10: 68.5	L10: 70.0	L10: 69.0	L10: 69.5	L10: 69.0	L10: 69.5	L10: 72.3	
						L90: 53.0	L90: 55.5	L90: 57.0	L90: 54.5	L90: 53.0	L90: 55.5	L90: 58.0	
HKLR	HY/2011/03	2015-06-29	NMS5	9:30	<5	Leq: 62.1	Leq: 62.5	Leq: 61.4	Leq: 58.7	Leq: 58.4	Leq: 58.6	Leq: 63.6	dB(A)
						L10: 67.0	L10: 65.5	L10: 64.5	L10: 62.0	L10: 62.0	L10: 62.5	L10: 67.3	
						L90: 52.0	L90: 54.0	L90: 53.5	L90: 53.0	L90: 50.5	L90: 51.5	L90: 55.6	
HKLR	HY/2011/03	2015-07-09	NMS5	10:16	<5	Leq: 62.6	Leq: 62.8	Leq: 60.6	Leq: 61.3	Leq: 61.5	Leq: 61.3	Leq: 64.8	dB(A)
						L10: 64.5	L10: 66.5	L10: 63.5	L10: 63.5	L10: 63.0	L10: 64.5	L10: 67.4	
						L90: 57.0	L90: 56.5	L90: 55.5	L90: 56.5	L90: 58.0	L90: 56.0	L90: 59.7	
HKLR	HY/2011/03	2015-07-15	NMS5	13:35	<5	Leq: 51.0	Leq: 51.9	Leq: 52.3	Leq: 53.5	Leq: 53.7	Leq: 53.9	Leq: 55.8	dB(A)
						L10: 52.0	L10: 54.5	L10: 55.0	L10: 59.0	L10: 56.5	L10: 56.0	L10: 59.0	
						L90: 49.0	L90: 48.5	L90: 49.0	L90: 49.0	L90: 49.0	L90: 50.5	L90: 52.2	
HKLR	HY/2011/03	2015-07-24	NMS5	11:30	<5	Leq: 54.8	Leq: 56.0	Leq: 54.5	Leq: 53.5	Leq: 56.9	Leq: 55.9	Leq: 58.4	dB(A)
						L10: 57.0	L10: 58.0	L10: 56.0	L10: 55.0	L10: 59.0	L10: 58.5	L10: 60.5	
						L90: 52.0	L90: 52.5	L90: 51.5	L90: 51.5	L90: 52.5	L90: 51.5	L90: 54.9	
HKLR	HY/2011/03	2015-07-27	NMS5	13:35	<5	Leq: 52.1	Leq: 50.7	Leq: 53.6	Leq: 60.2	Leq: 61.6	Leq: 60.1	Leq: 61.3	dB(A)
						L10: 54.0	L10: 52.0	L10: 54.0	L10: 65.0	L10: 66.0	L10: 65.5	L10: 65.8	
						L90: 49.5	L90: 49.0	L90: 48.5	L90: 49.0	L90: 49.5	L90: 50.0	L90: 52.3	
HKLR	HY/2011/03	2015-08-06	NMS5	13:40	<5	Leq: 52.6	Leq: 52.1	Leq: 51.3	Leq: 51.8	Leq: 55.9	Leq: 53.2	Leq: 56.1	dB(A)
						L10: 54.0	L10: 53.5	L10: 52.5	L10: 53.5	L10: 57.5	L10: 53.5	L10: 57.4	
						L90: 50.0	L90: 50.0	L90: 49.5	L90: 49.5	L90: 49.0	L90: 48.5	L90: 52.4	
HKLR	HY/2011/03	2015-08-11	NMS5	10:14	<5	Leq: 52.4	Leq: 52.2	Leq: 54.0	Leq: 56.1	Leq: 51.8	Leq: 52.6	Leq: 56.5	dB(A)
						L10: 54.0	L10: 53.5	L10: 57.0	L10: 58.5	L10: 52.5	L10: 54.0	L10: 58.5	
						L90: 50.0	L90: 50.5	L90: 50.5	L90: 52.0	L90: 50.5	L90: 51.0	L90: 53.8	
HKLR	HY/2011/03	2015-08-17	NMS5	13:22	<5	Leq: 54.8	Leq: 56.5	Leq: 56.4	Leq: 56.3	Leq: 53.3	Leq: 53.5	Leq: 58.3	dB(A)
						L10: 58.0	L10: 57.5	L10: 57.0	L10: 57.5	L10: 55.0	L10: 56.0	L10: 59.9	
						L90: 49.5	L90: 55.0	L90: 55.0	L90: 54.0	L90: 50.0	L90: 50.0	L90: 55.9	
HKLR	HY/2011/03	2015-08-27	NMS5	13:37	<5	Leq: 51.0	Leq: 51.2	Leq: 56.5	Leq: 52.5	Leq: 55.8	Leq: 59.2	Leq: 58.4	dB(A)
						L10: 52.0	L10: 52.5	L10: 57.0	L10: 54.0	L10: 56.5	L10: 63.5	L10: 61.0	
						L90: 49.0	L90: 49.0	L90: 49.0	L90: 50.0	L90: 50.0	L90: 50.0	L90: 52.5	

Remark:

(1)* A facade correction of +3 dB(A) was applied to the measured noise level.

Graphical Plot of Noise Levels at NMS5

Continuous Noise Monitoring Data (NMS5)



Remark:

(1) A facade correction of +3 dB(A) was applied to the measured noise level.