

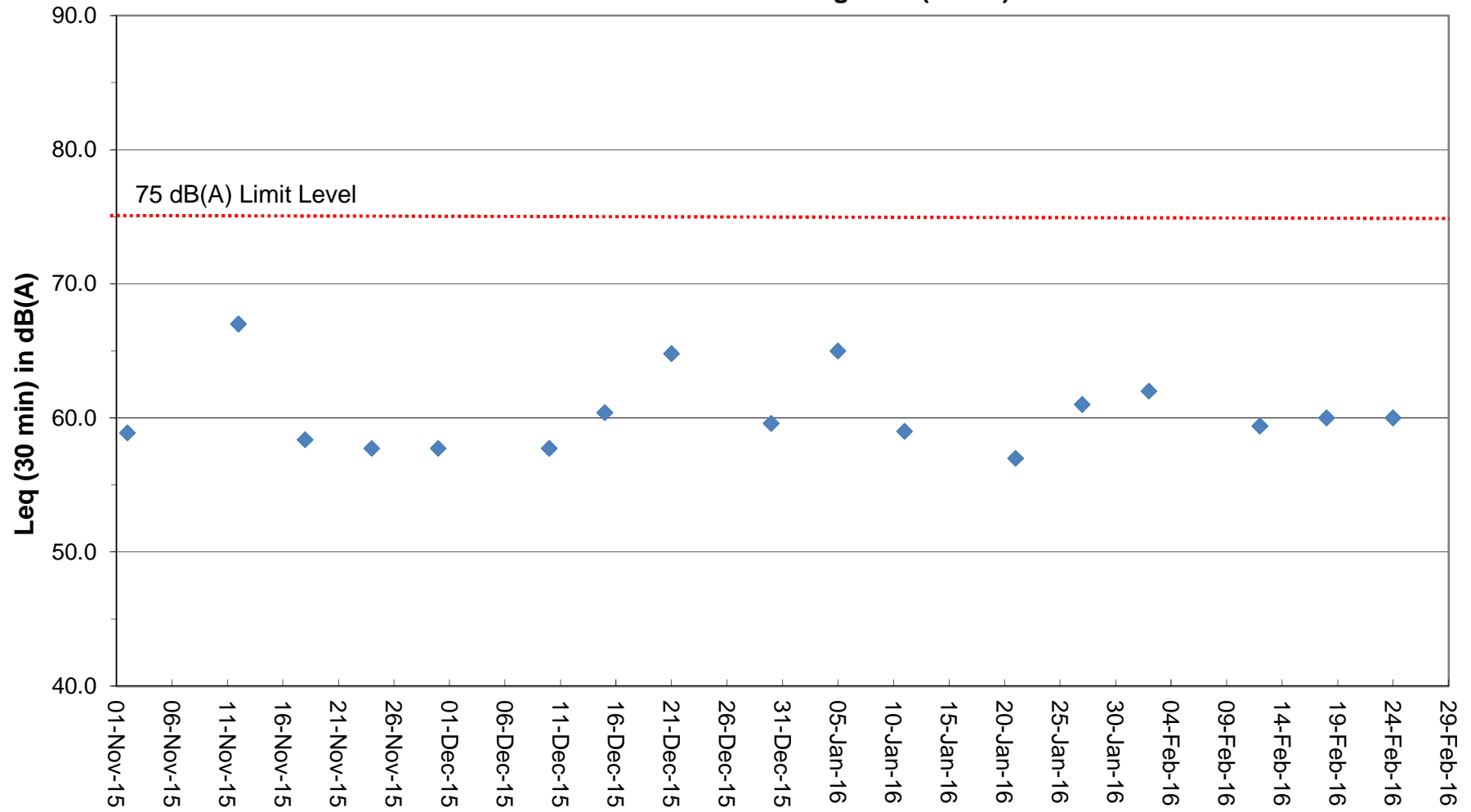
Noise Monitoring Data

Project	Works	Date (yyyy-mm-dd)	Station	Start Time	Wind Speed, m/s	1st set 5mins			2nd set 5mins			3rd set 5mins			4th set 5mins			5th set 5mins			6th set 5mins			Overall (30mins)*	Unit
						Leq:	L10:	L90:	Leq:	L10:	L90:	Leq:	L10:	L90:	Leq:	L10:	L90:	Leq:	L10:	L90:	Leq:	L10:	L90:		
HKLR	HY/2011/03	2015-12-10	NMS5	10:08	<5	Leq:	53.6	Leq:	55.4	Leq:	52.8	Leq:	55.0	Leq:	56.0	Leq:	56.8	Leq:	58.1	dB(A)					
						L10:	56.5	L10:	58.5	L10:	55.5	L10:	59.0	L10:	58.5	L10:	59.5	L10:	61.1						
						L90:	48.5	L90:	48.5	L90:	48.5	L90:	49.0	L90:	51.5	L90:	51.5	L90:	52.8						
HKLR	HY/2011/03	2015-12-15	NMS5	10:24	<5	Leq:	56.6	Leq:	56.7	Leq:	57.8	Leq:	57.3	Leq:	57.3	Leq:	58.6	Leq:	60.4	dB(A)					
						L10:	59.5	L10:	59.5	L10:	60.5	L10:	59.5	L10:	60.0	L10:	62.0	L10:	63.3						
						L90:	50.5	L90:	51.0	L90:	51.5	L90:	52.0	L90:	52.5	L90:	51.0	L90:	54.5						
HKLR	HY/2011/03	2015-12-21	NMS5	10:18	<5	Leq:	62.5	Leq:	61.5	Leq:	61.4	Leq:	61.2	Leq:	62.0	Leq:	62.0	Leq:	64.8	dB(A)					
						L10:	64.5	L10:	63.0	L10:	62.5	L10:	62.5	L10:	64.0	L10:	64.0	L10:	66.5						
						L90:	58.0	L90:	57.5	L90:	57.5	L90:	57.0	L90:	58.0	L90:	57.5	L90:	60.6						
HKLR	HY/2011/03	2015-12-30	NMS5	10:18	<5	Leq:	63.6	Leq:	57.7	Leq:	58.5	Leq:	58.7	Leq:	58.7	Leq:	56.6	Leq:	62.6	dB(A)					
						L10:	65.0	L10:	62.0	L10:	61.5	L10:	61.0	L10:	61.5	L10:	59.5	L10:	65.1						
						L90:	59.5	L90:	50.5	L90:	50.0	L90:	54.5	L90:	52.5	L90:	50.0	L90:	57.4						
HKLR	HY/2011/03	2016-01-05	NMS5	14:41	<5	Leq:	62.3	Leq:	61.6	Leq:	61.7	Leq:	61.3	Leq:	61.0	Leq:	61.2	Leq:	64.5	dB(A)					
						L10:	62.5	L10:	63.0	L10:	63.0	L10:	62.5	L10:	62.5	L10:	62.5	L10:	65.7						
						L90:	56.5	L90:	58.0	L90:	57.5	L90:	57.0	L90:	56.5	L90:	57.0	L90:	60.1						
HKLR	HY/2011/03	2016-01-11	NMS5	13:02	<5	Leq:	56.3	Leq:	55.1	Leq:	55.3	Leq:	53.8	Leq:	57.0	Leq:	57.8	Leq:	59.1	dB(A)					
						L10:	59.0	L10:	58.0	L10:	58.0	L10:	56.5	L10:	60.5	L10:	60.5	L10:	62.0						
						L90:	50.0	L90:	50.5	L90:	50.5	L90:	50.0	L90:	51.5	L90:	51.5	L90:	53.7						
HKLR	HY/2011/03	2016-01-21	NMS5	14:01	<5	Leq:	54.8	Leq:	53.9	Leq:	54.4	Leq:	55.5	Leq:	53.2	Leq:	54.8	Leq:	57.5	dB(A)					
						L10:	57.5	L10:	57.0	L10:	58.5	L10:	59.5	L10:	55.5	L10:	57.5	L10:	60.8						
						L90:	50.5	L90:	49.0	L90:	48.0	L90:	47.5	L90:	49.0	L90:	50.0	L90:	52.1						
HKLR	HY/2011/03	2016-01-27	NMS5	14:01	<5	Leq:	59.3	Leq:	59.3	Leq:	58.8	Leq:	58.6	Leq:	57.1	Leq:	57.3	Leq:	61.5	dB(A)					
						L10:	63.0	L10:	62.5	L10:	61.5	L10:	62.0	L10:	60.5	L10:	60.5	L10:	64.8						
						L90:	51.5	L90:	52.0	L90:	53.5	L90:	53.5	L90:	52.0	L90:	53.0	L90:	55.7						
HKLR	HY/2011/03	2016-02-02	NMS5	13:30	<5	Leq:	58.3	Leq:	59.6	Leq:	60.3	Leq:	59.4	Leq:	57.2	Leq:	58.9	Leq:	62.1	dB(A)					
						L10:	62.0	L10:	63.0	L10:	63.5	L10:	62.0	L10:	60.0	L10:	62.5	L10:	65.3						
						L90:	52.0	L90:	53.0	L90:	53.5	L90:	54.5	L90:	52.0	L90:	54.0	L90:	56.3						
HKLR	HY/2011/03	2016-02-12	NMS5	14:34	<5	Leq:	57.2	Leq:	52.5	Leq:	52.5	Leq:	53.6	Leq:	52.9	Leq:	61.1	Leq:	59.4	dB(A)					
						L10:	57.5	L10:	55.0	L10:	54.5	L10:	55.5	L10:	55.5	L10:	61.0	L10:	60.2						
						L90:	50.0	L90:	48.5	L90:	49.0	L90:	48.5	L90:	48.5	L90:	48.5	L90:	51.9						
HKLR	HY/2011/03	2016-02-18	NMS5	13:11	<5	Leq:	56.3	Leq:	56.2	Leq:	57.2	Leq:	58.5	Leq:	56.5	Leq:	57.0	Leq:	60.0	dB(A)					
						L10:	59.5	L10:	59.0	L10:	60.0	L10:	62.5	L10:	59.5	L10:	61.0	L10:	63.4						
						L90:	50.5	L90:	50.5	L90:	51.5	L90:	50.5	L90:	50.0	L90:	49.5	L90:	53.5						
HKLR	HY/2011/03	2016-02-24	NMS5	13:06	<5	Leq:	56.5	Leq:	54.0	Leq:	56.0	Leq:	57.9	Leq:	60.8	Leq:	54.7	Leq:	60.3	dB(A)					
						L10:	60.0	L10:	56.5	L10:	59.0	L10:	61.5	L10:	64.0	L10:	57.5	L10:	63.5						
						L90:	50.5	L90:	49.5	L90:	51.0	L90:	51.5	L90:	50.5	L90:	50.5	L90:	53.6						

Remark:

(1)* A facade correction of +3 dB(A) was applied to the measured noise level.

Continuous Noise Monitoring Data (NMS5)



Remark:

(1) A facade correction of +3 dB(A) was applied to the measured noise level.