

Noise Monitoring Data

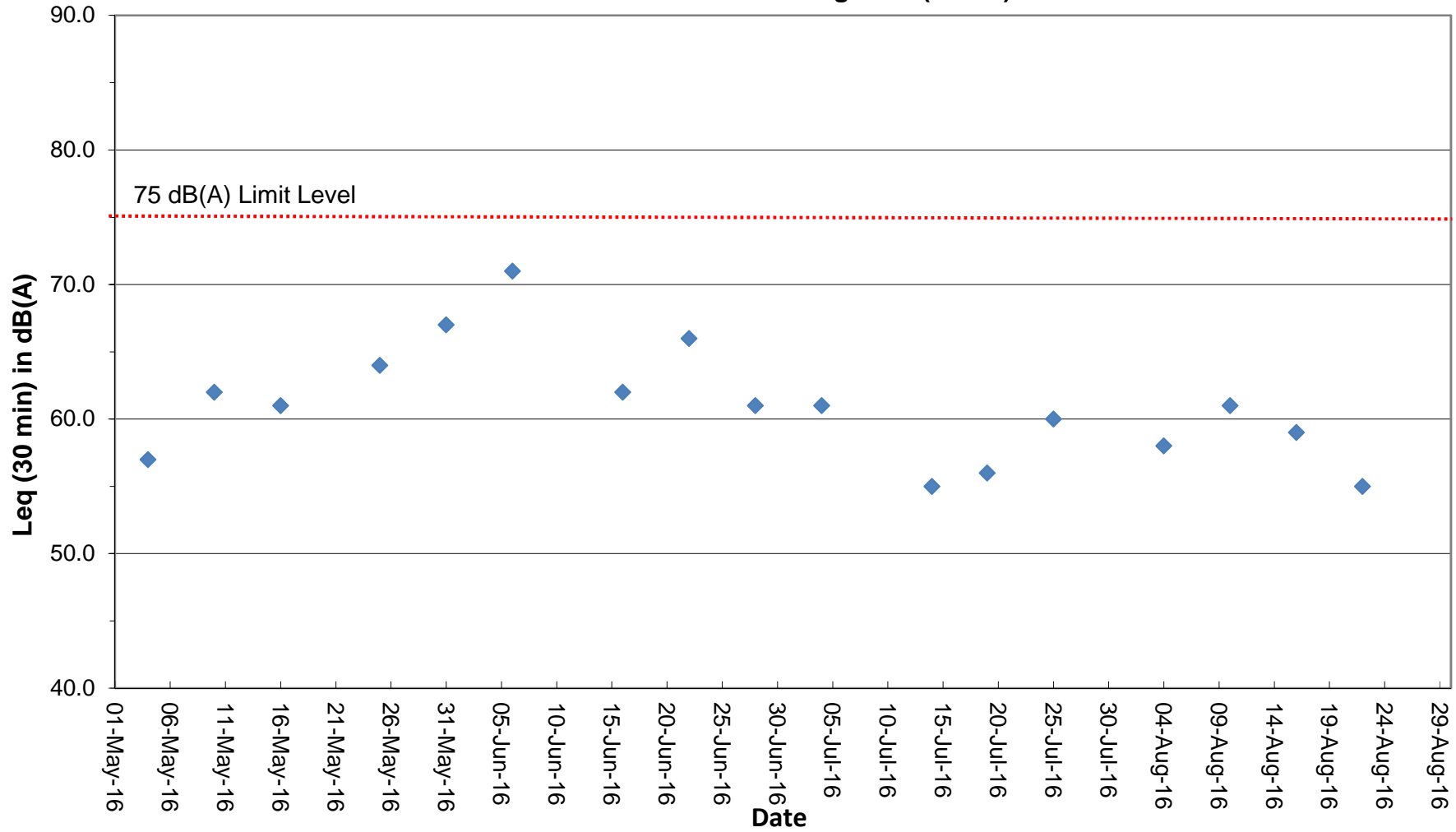
Project	Works	Date (yyyy-mm-dd)	Station	Start Time	Wind Speed, m/s	1st set 5mins	2nd set 5mins	3rd set 5mins	4th set 5mins	5th set 5mins	6th set 5mins	Overall (30mins)*	Unit
HKLR	HY/2011/03	2016-06-06	NMS5	13:14	<5	Leq: 67.9	Leq: 65.8	Leq: 68.5	Leq: 69.0	Leq: 68.8	Leq: 68.1	Leq: 71.1	dB(A)
						L10: 65.0	L10: 69.0	L10: 70.5	L10: 70.5	L10: 70.5	L10: 70.0	L10: 72.6	
						L90: 52.5	L90: 59.0	L90: 62.5	L90: 65.5	L90: 66.5	L90: 64.0	L90: 66.4	
HKLR	HY/2011/03	2016-06-16	NMS5	13:16	<5	Leq: 58.6	Leq: 58.3	Leq: 58.7	Leq: 59.6	Leq: 59.3	Leq: 61.4	Leq: 62.4	dB(A)
						L10: 56.0	L10: 60.5	L10: 63.0	L10: 64.5	L10: 64.0	L10: 65.5	L10: 66.2	
						L90: 49.0	L90: 49.0	L90: 50.0	L90: 49.0	L90: 49.5	L90: 49.5	L90: 52.3	
HKLR	HY/2011/03	2016-06-22	NMS5	13:09	<5	Leq: 65.5	Leq: 61.7	Leq: 62.4	Leq: 62.2	Leq: 60.6	Leq: 61.9	Leq: 65.7	dB(A)
						L10: 65.5	L10: 66.5	L10: 66.5	L10: 66.5	L10: 65.0	L10: 66.0	L10: 69.0	
						L90: 53.0	L90: 53.5	L90: 54.0	L90: 54.0	L90: 51.0	L90: 49.5	L90: 55.8	
HKLR	HY/2011/03	2016-06-28	NMS5	13:00	<5	Leq: 60.1	Leq: 56.9	Leq: 58.7	Leq: 59.0	Leq: 54.4	Leq: 57.7	Leq: 61.1	dB(A)
						L10: 64.0	L10: 63.0	L10: 63.5	L10: 63.5	L10: 56.0	L10: 58.5	L10: 65.3	
						L90: 49.5	L90: 48.5	L90: 49.0	L90: 49.0	L90: 49.5	L90: 56.5	L90: 54.5	
HKLR	HY/2011/03	2016-07-04	NMS5	13:13	<5	Leq: 61.1	Leq: 58.9	Leq: 59.9	Leq: 53.4	Leq: 55.3	Leq: 51.9	Leq: 61.0	dB(A)
						L10: 53.5	L10: 63.5	L10: 65.5	L10: 56.5	L10: 58.5	L10: 53.5	L10: 63.9	
						L90: 48.5	L90: 48.0	L90: 48.5	L90: 49.0	L90: 51.5	L90: 49.5	L90: 52.3	
HKLR	HY/2011/03	2016-07-14	NMS5	14:39	<5	Leq: 54.0	Leq: 49.6	Leq: 50.4	Leq: 49.8	Leq: 53.0	Leq: 53.9	Leq: 55.2	dB(A)
						L10: 54.0	L10: 51.0	L10: 51.5	L10: 51.5	L10: 57.0	L10: 54.0	L10: 56.7	
						L90: 48.0	L90: 47.0	L90: 47.0	L90: 47.5	L90: 47.0	L90: 47.5	L90: 50.3	
HKLR	HY/2011/03	2016-07-19	NMS5	13:48	<5	Leq: 50.1	Leq: 51.0	Leq: 54.0	Leq: 54.6	Leq: 52.9	Leq: 51.8	Leq: 55.7	dB(A)
						L10: 54.5	L10: 54.5	L10: 55.5	L10: 56.0	L10: 55.5	L10: 54.5	L10: 58.1	
						L90: 47.0	L90: 47.0	L90: 47.5	L90: 49.0	L90: 48.5	L90: 49.0	L90: 51.1	
HKLR	HY/2011/03	2016-07-25	NMS5	10:06	<5	Leq: 58.4	Leq: 56.3	Leq: 52.9	Leq: 60.2	Leq: 55.9	Leq: 57.9	Leq: 60.5	dB(A)
						L10: 62.0	L10: 60.0	L10: 55.0	L10: 63.5	L10: 57.5	L10: 61.0	L10: 63.6	
						L90: 50.0	L90: 50.0	L90: 50.0	L90: 51.0	L90: 52.5	L90: 53.0	L90: 54.3	
HKLR	HY/2011/03	2016-08-04	NMS5	14:05	<5	Leq: 55.7	Leq: 55.7	Leq: 55.5	Leq: 55.1	Leq: 52.3	Leq: 53.5	Leq: 57.8	dB(A)
						L10: 60.0	L10: 59.5	L10: 58.5	L10: 57.5	L10: 55.5	L10: 56.5	L10: 61.2	
						L90: 48.5	L90: 49.0	L90: 49.5	L90: 49.0	L90: 49.0	L90: 49.5	L90: 52.1	
HKLR	HY/2011/03	2016-08-10	NMS5	13:58	<5	Leq: 60.9	Leq: 59.6	Leq: 55.3	Leq: 56.6	Leq: 54.4	Leq: 54.4	Leq: 60.6	dB(A)
						L10: 63.0	L10: 63.0	L10: 55.5	L10: 62.5	L10: 58.0	L10: 56.5	L10: 63.8	
						L90: 50.0	L90: 50.5	L90: 50.0	L90: 49.5	L90: 48.0	L90: 48.5	L90: 52.5	
HKLR	HY/2011/03	2016-08-16	NMS5	15:34	<5	Leq: 55.8	Leq: 54.4	Leq: 57.2	Leq: 53.7	Leq: 54.2	Leq: 57.5	Leq: 58.7	dB(A)
						L10: 59.5	L10: 58.0	L10: 61.0	L10: 57.5	L10: 58.0	L10: 62.0	L10: 62.7	
						L90: 47.5	L90: 48.5	L90: 49.0	L90: 47.0	L90: 47.5	L90: 47.5	L90: 50.9	
HKLR	HY/2011/03	2016-08-22	NMS5	10:06	<5	Leq: 53.5	Leq: 53.7	Leq: 49.4	Leq: 47.8	Leq: 52.4	Leq: 51.9	Leq: 54.9	dB(A)
						L10: 57.0	L10: 57.0	L10: 52.5	L10: 48.5	L10: 55.5	L10: 55.0	L10: 58.1	
						L90: 47.5	L90: 47.0	L90: 47.0	L90: 46.5	L90: 47.5	L90: 48.5	L90: 50.4	

Remark:

(1)\* A facade correction of +3 dB(A) was applied to the measured noise level.

# Graphical Plot of Noise Levels at NMS5

## Continuous Noise Monitoring Data (NMS5)



Remark:

(1) A facade correction of +3 dB(A) was applied to the measured noise level.