

Noise Monitoring Data

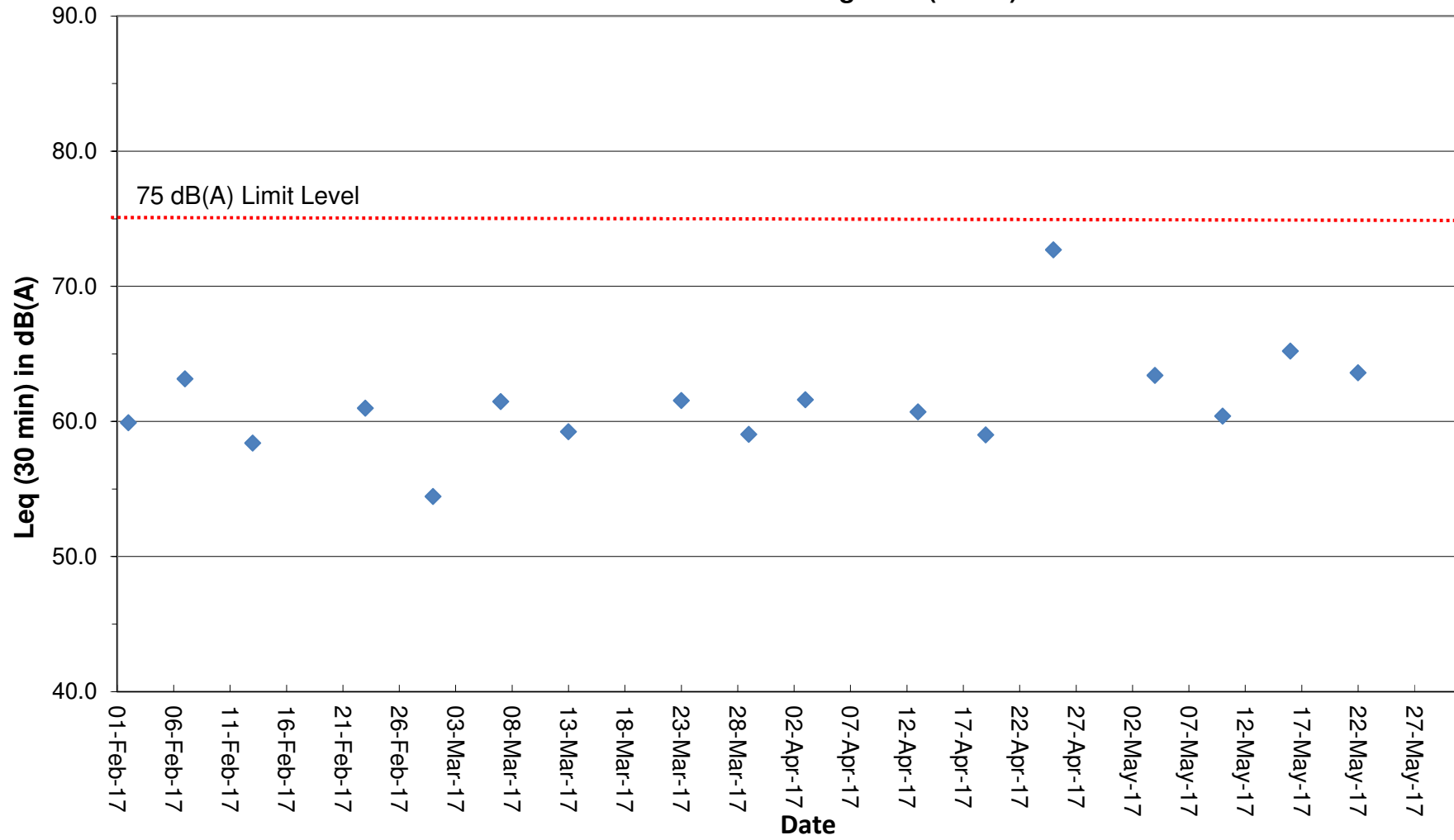
Project	Works	Date (yyyy-mm-dd)	Station	Start Time	Wind Speed, m/s	1st set 5mins			2nd set 5mins			3rd set 5mins			4th set 5mins			5th set 5mins			6th set 5mins			Overall (30mins)*	Unit
						Leq:	L10:	L90:	Leq:	L10:	L90:	Leq:	L10:	L90:	Leq:	L10:	L90:	Leq:	L10:	L90:	Leq:	L10:	L90:		
HKLR	HY/2011/03	2017-03-01	NMS5	14:35	<5	Leq:	50.4	Leq:	50.7	Leq:	50.3	Leq:	53.4	Leq:	51.6	Leq:	51.5	Leq:	54.5		dB(A)				
						L10:	51.3	L10:	52.3	L10:	52.1	L10:	54.3	L10:	52.4	L10:	52.6	L10:	55.6						
						L90:	48.1	L90:	48.6	L90:	47.7	L90:	49.4	L90:	48.6	L90:	48.2	L90:	51.5						
HKLR	HY/2011/03	2017-03-07	NMS5	08:43	<5	Leq:	59.2	Leq:	57.6	Leq:	58.0	Leq:	58.2	Leq:	56.1	Leq:	60.5	Leq:	61.5		dB(A)				
						L10:	61.5	L10:	61.5	L10:	62.0	L10:	62.0	L10:	59.0	L10:	64.0	L10:	64.9						
						L90:	50.5	L90:	50.5	L90:	50.5	L90:	51.0	L90:	49.5	L90:	49.0	L90:	53.2						
HKLR	HY/2011/03	2017-03-13	NMS5	13:08	<5	Leq:	57.0	Leq:	57.4	Leq:	50.7	Leq:	55.8	Leq:	56.6	Leq:	57.2	Leq:	59.3		dB(A)				
						L10:	60.5	L10:	61.0	L10:	52.0	L10:	59.0	L10:	60.0	L10:	60.0	L10:	62.5						
						L90:	50.5	L90:	49.0	L90:	48.0	L90:	49.5	L90:	49.0	L90:	50.5	L90:	52.5						
HKLR	HY/2011/03	2017-03-23	NMS5	09:10	<5	Leq:	54.2	Leq:	58.2	Leq:	55.0	Leq:	55.2	Leq:	55.9	Leq:	63.7	Leq:	61.6		dB(A)				
						L10:	57.0	L10:	62.0	L10:	58.5	L10:	58.0	L10:	59.5	L10:	62.0	L10:	62.9						
						L90:	49.5	L90:	50.5	L90:	49.5	L90:	50.5	L90:	50.5	L90:	51.5	L90:	53.4						
HKLR	HY/2011/03	2017-03-29	NMS5	09:03	<5	Leq:	53.2	Leq:	55.2	Leq:	56.5	Leq:	57.7	Leq:	56.8	Leq:	55.6	Leq:	59.1		dB(A)				
						L10:	56.0	L10:	58.5	L10:	60.0	L10:	60.0	L10:	59.5	L10:	58.0	L10:	61.9						
						L90:	49.0	L90:	49.0	L90:	50.0	L90:	52.0	L90:	51.5	L90:	52.0	L90:	53.8						
HKLR	HY/2011/03	2017-04-03	NMS5	09:35	<5	Leq:	60.3	Leq:	59.4	Leq:	60.1	Leq:	55.6	Leq:	58.1	Leq:	55.9	Leq:	61.6		dB(A)				
						L10:	64.5	L10:	63.5	L10:	64.5	L10:	58.0	L10:	61.0	L10:	59.0	L10:	65.5						
						L90:	51.5	L90:	50.5	L90:	50.0	L90:	50.0	L90:	50.0	L90:	50.0	L90:	53.4						
HKLR	HY/2011/03	2017-04-13	NMS5	08:43	<5	Leq:	61.1	Leq:	55.6	Leq:	54.5	Leq:	56.0	Leq:	55.3	Leq:	59.4	Leq:	60.7		dB(A)				
						L10:	60.0	L10:	60.0	L10:	58.5	L10:	59.5	L10:	58.5	L10:	61.5	L10:	62.8						
						L90:	47.0	L90:	46.5	L90:	48.5	L90:	49.5	L90:	50.0	L90:	50.5	L90:	51.9						
HKLR	HY/2011/03	2017-04-19	NMS5	13:02	<5	Leq:	55.8	Leq:	55.8	Leq:	54.6	Leq:	54.2	Leq:	57.2	Leq:	57.4	Leq:	59.0		dB(A)				
						L10:	57.5	L10:	58.5	L10:	56.5	L10:	56.5	L10:	59.5	L10:	61.0	L10:	61.6						
						L90:	51.0	L90:	52.0	L90:	50.5	L90:	51.0	L90:	52.5	L90:	50.5	L90:	54.3						
HKLR	HY/2011/03	2017-04-25	NMS5	08:55	<5	Leq:	57.1	Leq:	56.6	Leq:	55.1	Leq:	56.2	Leq:	54.5	Leq:	77.3	Leq:	72.7		dB(A)				
						L10:	61.0	L10:	59.5	L10:	57.5	L10:	59.5	L10:	57.0	L10:	81.0	L10:	76.4						
						L90:	50.5	L90:	51.5	L90:	51.5	L90:	50.5	L90:	51.0	L90:	52.0	L90:	54.2						
HKLR	HY/2011/03	2017-05-04	NMS5	16:09	<5	Leq:	59.5	Leq:	59.6	Leq:	58.4	Leq:	59.9	Leq:	60.4	Leq:	63.1	Leq:	63.4		dB(A)				
						L10:	61.0	L10:	61.5	L10:	61.0	L10:	62.0	L10:	62.0	L10:	61.5	L10:	64.5						
						L90:	55.0	L90:	55.0	L90:	54.0	L90:	54.5	L90:	56.5	L90:	56.0	L90:	58.3						
HKLR	HY/2011/03	2017-05-10	NMS5	13:41	<5	Leq:	51.8	Leq:	50.2	Leq:	48.8	Leq:	48.4	Leq:	48.2	Leq:	64.5	Leq:	60.4		dB(A)				
						L10:	51.5	L10:	52.0	L10:	50.5	L10:	49.5	L10:	49.0	L10:	54.5	L10:	54.6						
						L90:	47.5	L90:	47.5	L90:	46.0	L90:	47.0	L90:	46.5	L90:	48.0	L90:	50.1						
HKLR	HY/2011/03	2017-05-16	NMS5	15:03	<5	Leq:	67.6	Leq:	58.3	Leq:	59.4	Leq:	57.1	Leq:	59.2	Leq:	61.1	Leq:	65.2		dB(A)				
						L10:	61.0	L10:	61.0	L10:	62.0	L10:	60.5	L10:	62.5	L10:	63.5	L10:	64.9						
						L90:	50.0	L90:	51.5	L90:	52.5	L90:	51.5	L90:	51.5	L90:	52.0	L90:	54.6						
HKLR	HY/2011/03	2017-05-22	NMS5	13:01	<5	Leq:	52.0	Leq:	51.6	Leq:	55.8	Leq:	53.2	Leq:	54.1	Leq:	67.6	Leq:	63.6		dB(A)				
						L10:	55.0	L10:	54.5	L10:	61.0	L10:	56.0	L10:	58.0	L10:	59.0	L10:	60.9						
						L90:	46.5	L90:	47.0	L90:	47.5	L90:	48.0	L90:	48.0	L90:	47.0	L90:	50.4						

Remark:

(1)\* A facade correction of +3 dB(A) was applied to the measured noise level.

# Graphical Plot of Noise Levels at NMS5

## Continuous Noise Monitoring Data (NMS5)



Remark:

(1) A facade correction of +3 dB(A) was applied to the measured noise level.