

Contract No. HY/2011/03
Hong Kong-Zhuhai-Macao Bridge Hong Kong Link Road –
Section between Scenic Hill and Hong Kong Boundary
Crossing Facilities Dolphin Monitoring

23rd Quarterly Progress Report (March-May 2018)
submitted to China State Construction Engineering (HK) Ltd.

Submitted by
Samuel K.Y. Hung, Ph.D., Hong Kong Cetacean Research Project

June 20, 2018

1. Introduction

- 1.1. The Hong Kong Link Road (HKLR) serves to connect the Hong Kong-Zhuhai-Macao Bridge (HZMB) Main Bridge at the Hong Kong Special Administrative Region (HKSAR) Boundary and the HZMB Hong Kong Boundary Crossing Facilities (HKBCF) located at the northeastern waters of the Hong Kong International Airport. The construction of HKLR is separated into two sections, with the construction for the section between Scenic Hill and Hong Kong Boundary Crossing Facilities being commenced in October 2012.
- 1.2. According to the updated Environmental Monitoring and Audit (EM&A) Manual (for HKLR), monthly line-transect vessel surveys for Chinese White Dolphin should be conducted to cover the Northwest and Northeast Lantau survey areas as in AFCD annual marine mammal monitoring programme.
- 1.3. Since October 2012, Hong Kong Cetacean Research Project (HKCRP) has been commissioned to conduct this 54-month dolphin monitoring study in order to collect data on Chinese White Dolphins during the construction phase (i.e. impact period) of the HKLR03 project in Northwest Lantau (NWL) and Northeast Lantau (NEL) survey areas, and to analyze the collected survey data to monitor distribution, encounter rate, activities and occurrence of dolphin calves. Photo-identification will also be collected from individual Chinese White Dolphins to examine their individual range patterns.

- 1.4. From the monitoring results, any changes in dolphin occurrence within the study area will be examined for possible causes, and appropriate actions and additional mitigation measures will be recommended as necessary.
- 1.5. This report is the 23rd quarterly progress report under the HKLR03 construction phase dolphin monitoring programme submitted to the China State Construction Engineering (HK) Limited, summarizing the results of the survey findings during the period of March to May 2018.

2. Monitoring Methodology

2.1. Vessel-based Line-transect Survey

- 2.1.1. According to the requirement of the updated EM&A manual, dolphin monitoring programme should cover all transect lines in NEL and NWL survey areas (see Figure 1) twice per month throughout the entire construction period. The co-ordinates of all transect lines are shown in Table 1.

Table 1 Co-ordinates of transect lines

Line No.		Easting	Northing		Line No.		Easting	Northing
1	Start Point	804671	815456		13	Start Point	816506	819480
1	End Point	804671	831404		13	End Point	816506	824859
2	Start Point	805476	820800		14	Start Point	817537	820220
2	End Point	805476	826654		14	End Point	817537	824613
3	Start Point	806464	821150		15	Start Point	818568	820735
3	End Point	806464	822911		15	End Point	818568	824433
4	Start Point	807518	821500		16	Start Point	819532	821420
4	End Point	807518	829230		16	End Point	819532	824209
5	Start Point	808504	821850		17	Start Point	820451	822125
5	End Point	808504	828602		17	End Point	820451	823671
6	Start Point	809490	822150		18	Start Point	821504	822371
6	End Point	809490	825352		18	End Point	821504	823761
7	Start Point	810499	822000		19	Start Point	822513	823268

7	End Point	810499	824613		19	End Point	822513	824321
8	Start Point	811508	821123		20	Start Point	823477	823402
8	End Point	811508	824254		20	End Point	823477	824613
9	Start Point	812516	821303		21	Start Point	805476	827081
9	End Point	812516	824254		21	End Point	805476	830562
10	Start Point	813525	821176		22	Start Point	806464	824033
10	End Point	813525	824657		22	End Point	806464	829598
11	Start Point	814556	818853		23	Start Point	814559	821739
11	End Point	814556	820992		23	End Point	814559	824768
12	Start Point	815542	818807		24	Start Point	805476	815900
12	End Point	815542	824882		24	End Point	805476	819100

- 2.1.2. The survey team used standard line-transect methods (Buckland et al. 2001) to conduct the systematic vessel surveys, and followed the same technique of data collection that has been adopted over the last 19 years of marine mammal monitoring surveys in Hong Kong developed by HKCRP (see Hung 2017). For each monitoring vessel survey, a 15-m inboard vessel with an open upper deck (about 4.5 m above water surface) was used to make observations from the flying bridge area.
- 2.1.3. Two experienced observers (a data recorder and a primary observer) made up the on-effort survey team, and the survey vessel transited different transect lines at a constant speed of 13-15 km per hour. The data recorder searched with unaided eyes and filled out the datasheets, while the primary observer searched for dolphins and porpoises continuously through 7 x 50 *Fujinon* marine binoculars. Both observers searched the sea ahead of the vessel, between 270° and 90° (in relation to the bow, which is defined as 0°). One to two additional experienced observers were available on the boat to work in shift (i.e. rotate every 30 minutes) in order to minimize fatigue of the survey team members. All observers were experienced in small cetacean survey techniques and identifying local cetacean species.
- 2.1.4. During on-effort survey periods, the survey team recorded effort data including time, position (latitude and longitude), weather conditions (Beaufort sea state

and visibility), and distance traveled in each series (a continuous period of search effort) with the assistance of a handheld GPS (*Garmin eTrex Legend*).

- 2.1.5. Data including time, position and vessel speed were also automatically and continuously logged by handheld GPS throughout the entire survey for subsequent review.
- 2.1.6. When dolphins were sighted, the survey team would end the survey effort, and immediately record the initial sighting distance and angle of the dolphin group from the survey vessel, as well as the sighting time and position. Then the research vessel was diverted from its course to approach the animals for species identification, group size estimation, assessment of group composition, and behavioural observations. The perpendicular distance (PSD) of the dolphin group to the transect line was later calculated from the initial sighting distance and angle.
- 2.1.7. Survey effort being conducted along the parallel transect lines that were perpendicular to the coastlines (as indicated in Figure 1) was labeled as “primary” survey effort, while the survey effort conducted along the connecting lines between parallel lines was labeled as “secondary” survey effort. According to HKCRP long-term dolphin monitoring data, encounter rates of Chinese white dolphins deduced from effort and sighting data collected along primary and secondary lines were similar in NEL and NWL survey areas. Therefore, both primary and secondary survey effort were presented as on-effort survey effort in this report.

2.2. *Photo-identification Work*

- 2.2.1. When a group of Chinese White Dolphins were sighted during the line-transect survey, the survey team would end effort and approach the group slowly from the side and behind to take photographs of them. Every attempt was made to photograph every dolphin in the group, and even photograph both sides of the dolphins, since the colouration and markings on both sides may not be symmetrical.
- 2.2.2. One to two professional digital cameras (*Canon EOS 7D* and/or *60D* models), each equipped with long telephoto lenses (100-400 mm zoom), were available on board for researchers to take sharp, close-up photographs of dolphins as they surfaced. The images were shot at the highest available resolution and stored

on Compact Flash memory cards for downloading onto a computer.

- 2.2.3. All digital images taken in the field were first examined, and those containing potentially identifiable individuals were sorted out. These photographs would then be examined in greater detail, and were carefully compared to the existing Chinese White Dolphin photo-identification catalogue maintained by HKCRP since 1995.
- 2.2.4. Chinese White Dolphins can be identified by their natural markings, such as nicks, cuts, scars and deformities on their dorsal fin and body, and their unique spotting patterns were also used as secondary identifying features (Jefferson 2000).
- 2.2.5. All photographs of each individual were then compiled and arranged in chronological order, with data including the date and location first identified (initial sighting), re-sightings, associated dolphins, distinctive features, and age classes entered into a computer database.

2.3. *Data analysis*

- 2.3.1. Distribution Analysis – The line-transect survey data was integrated with the Geographic Information System (GIS) in order to visualize and interpret different spatial and temporal patterns of dolphin distribution using sighting positions. Location data of dolphin groups were plotted on map layers of Hong Kong using a desktop GIS (ArcView[®] 3.1) to examine their distribution patterns in details. The dataset was also stratified into different subsets to examine distribution patterns of dolphin groups with different categories of group sizes, young calves and activities.
- 2.3.2. Encounter rate analysis – Encounter rates of Chinese white dolphins (number of on-effort sightings per 100 km of survey effort, and total number of dolphins sighted on-effort per 100 km of survey effort) were calculated in NEL and NWL survey areas in relation to the amount of survey effort conducted during each month of monitoring survey. Dolphin encounter rates were calculated in two ways for comparisons with the HZMB baseline monitoring results as well as to AFCD long-term marine mammal monitoring results.

Firstly, for the comparison with the HZMB baseline monitoring results, the encounter rates were calculated using primary survey effort alone, and only

data collected under Beaufort 3 or below condition would be used for encounter rate analysis. The average encounter rate of sightings (STG) and average encounter rate of dolphins (ANI) were deduced based on the encounter rates from six events during the present quarter (i.e. six sets of line-transect surveys in North Lantau), which was also compared with the one deduced from the six events during the baseline period (i.e. six sets of line-transect surveys in North Lantau).

Secondly, the encounter rates were calculated using both primary and secondary survey effort collected under Beaufort 3 or below condition as in AFCD long-term monitoring study. The encounter rate of sightings and dolphins were deduced by dividing the total number of on-effort sightings (STG) and total number of dolphins (ANI) by the amount of survey effort for the present quarterly period.

- 2.3.3. Quantitative grid analysis on habitat use – To conduct quantitative grid analysis of habitat use, positions of on-effort sightings of Chinese White Dolphins collected during the quarterly impact phase monitoring period were plotted onto 1-km² grids among NWL and NEL survey areas on GIS. Sighting densities (number of on-effort sightings per km²) and dolphin densities (total number of dolphins from on-effort sightings per km²) were then calculated for each 1 km by 1 km grid with the aid of GIS.

Sighting density grids and dolphin density grids were then further normalized with the amount of survey effort conducted within each grid. The total amount of survey effort spent on each grid was calculated by examining the survey coverage on each line-transect survey to determine how many times the grid was surveyed during the study period. For example, when the survey boat traversed through a specific grid 50 times, 50 units of survey effort were counted for that grid. With the amount of survey effort calculated for each grid, the sighting density and dolphin density of each grid were then normalized (i.e. divided by the unit of survey effort).

The newly-derived unit for sighting density was termed SPSE, representing the number of on-effort sightings per 100 units of survey effort. In addition, the derived unit for actual dolphin density was termed DPSE, representing the number of dolphins per 100 units of survey effort. Among the 1-km² grids that were partially covered by land, the percentage of sea area was calculated

using GIS tools, and their SPSE and DPSE values were adjusted accordingly. The following formulae were used to estimate SPSE and DPSE in each 1-km² grid within the study area:

$$\text{SPSE} = ((S / E) \times 100) / \text{SA}\%$$
$$\text{DPSE} = ((D / E) \times 100) / \text{SA}\%$$

where S = total number of on-effort sightings
D = total number of dolphins from on-effort sightings
E = total number of units of survey effort
SA% = percentage of sea area

- 2.3.4. Behavioural analysis – When dolphins were sighted during vessel surveys, their behaviour was observed. Different activities were categorized (i.e. feeding, milling/resting, traveling, socializing) and recorded on sighting datasheets. This data was then input into a separate database with sighting information, which can be used to determine the distribution of behavioural data with a desktop GIS. Distribution of sightings of dolphins engaged in different activities and behaviours would then be plotted on GIS and carefully examined to identify important areas for different activities of the dolphins.
- 2.3.5. Ranging pattern analysis – Location data of individual dolphins that occurred during the 3-month impact phase monitoring period were obtained from the dolphin sighting database and photo-identification catalogue. To deduce home ranges for individual dolphins using the fixed kernel methods, the program Animal Movement Analyst Extension, was loaded as an extension with ArcView[®] 3.1 along with another extension Spatial Analyst 2.0. Using the fixed kernel method, the program calculated kernel density estimates based on all sighting positions, and provided an active interface to display kernel density plots. The kernel estimator then calculated and displayed the overall ranging area at 95% UD level.

3. Monitoring Results

3.1. Summary of survey effort and dolphin sightings

- 3.1.1. During the period of March to May 2018, six sets of systematic line-transect vessel surveys were conducted to cover all transect lines in NWL and NEL survey areas twice per month.
- 3.1.2. From these surveys, a total of 791.83 km of survey effort was collected, with 89.8% of the total survey effort being conducted under favourable weather

conditions (i.e. Beaufort Sea State 3 or below with good visibility). Among the two areas, 290.90 km and 500.93 km of survey effort were conducted in NEL and NWL survey areas respectively.

- 3.1.3. The total survey effort conducted on primary lines was 576.61 km, while the effort on secondary lines was 215.22 km. Survey effort conducted on both primary and secondary lines were considered as on-effort survey data. A summary table of the survey effort is shown in Annex I.
 - 3.1.4. During the six sets of monitoring surveys conducted between March and May 2018, nine groups of 30 Chinese White Dolphins were sighted, with the summary table of the dolphin sightings shown in Annex II. All dolphin sightings were made during on-effort search, while eight of the nine on-effort dolphin sightings were made on primary lines.
 - 3.1.5. In addition, all dolphin groups were sighted in NWL, and no dolphin was sighted at all in NEL. In fact, since August 2014, only two sightings of two lone dolphins were made respectively in NEL during HKLR03 monitoring surveys.
- 3.2. *Distribution*
- 3.2.1. Distribution of dolphin sightings made during HKLR03 monitoring surveys conducted from March to May 2018 is shown in Figure 1. The majority of sightings were made at the western end of the North Lantau region, with slightly higher concentration of sightings near Lung Kwu Chau (Figure 1). Several sightings were also made near Black Point as well as a few kilometres to the west of Sha Chau (Figure 1). As consistently recorded in the previous monitoring quarters, the dolphins were completely absent from the central and eastern portions of North Lantau waters (Figure 1).
 - 3.2.2. All dolphin sightings were located far away from the HKLR03 and HKBCF reclamation sites as well as along the alignments of HKLR09 and Tuen Mun-Chek Lap Kok Link (TMCLKL) (Figure 1).
 - 3.2.3. Sighting distribution of dolphins during the present impact phase monitoring period (March-May 2018) was drastically different from the one during the baseline monitoring period (Figure 1). In the present quarter, dolphins have disappeared from the NEL region, which was in stark contrast to their frequent occurrence around the Brothers Islands, near Shum Shui Kok and in the vicinity of HKBCF reclamation site during the baseline period (Figure 1). The nearly complete abandonment of NEL region by the dolphins has been consistently recorded in the past 20 quarters of HKLR03 monitoring, which has

resulted in zero to extremely low dolphin encounter rates in this area.

3.2.4. In NWL survey area, dolphin occurrence was also significantly different between the baseline and impact phase periods. During the present impact monitoring period, dolphins were less frequently sighted here, and mainly at the western end of the area, which was in contrary to their frequent occurrences throughout the area during the baseline period (Figure 1).

3.2.5. Another comparison in dolphin distribution was made between the six quarterly periods of spring months in 2013-18 (Figure 2). Among the six spring periods, dolphins were sighted regularly in NWL waters in 2013 and 2014, but their usage there was dramatically reduced in the four subsequent spring periods, with their only occurrences mostly concentrated at the western end of the survey area (Figure 2).

3.3. *Encounter rate*

3.3.1. During the present three-month study period, the encounter rates of Chinese White Dolphins deduced from the survey effort and on-effort sighting data from the primary transect lines under favourable conditions (Beaufort 3 or below) for each set of the surveys in NEL and NWL are shown in Table 2. The average encounter rates deduced from the six sets of surveys were also compared with the ones deduced from the baseline monitoring period (September – November 2011) (Table 3).

3.3.2. To facilitate the comparison with the AFCD long-term monitoring results, the encounter rates were also calculated for the present quarter using both primary and secondary survey effort. The encounter rates of sightings (STG) and dolphins (ANI) in NWL were 2.12 sightings and 7.07 dolphins per 100 km of survey effort respectively, while the encounter rates of sightings (STG) and dolphins (ANI) in NEL were both nil for this quarter.

Table 2. Dolphin encounter rates (sightings per 100 km of survey effort) during March-May 2018

SURVEY AREA	DOLPHIN MONITORING DATES	Encounter rate (STG) (no. of on-effort dolphin sightings per 100 km of survey effort)	Encounter rate (ANI) (no. of dolphins from all on-effort sightings per 100 km of survey effort)
		Primary Lines Only	Primary Lines Only
Northeast Lantau	Set 1 (8 & 12 Mar 2018)	0.00	0.00
	Set 2 (20 & 23 Mar 2018)	0.00	0.00
	Set 3 (10 & 17 Apr 2018)	0.00	0.00
	Set 4 (19 & 25 Apr 2018)	0.00	0.00
	Set 5 (7 & 10 May 2018)	0.00	0.00
	Set 6 (16 & 30 May 2018)	0.00	0.00
Northwest Lantau	Set 1 (8 & 12 Mar 2018)	1.73	5.19
	Set 2 (20 & 23 Mar 2018)	12.32	56.69
	Set 3 (10 & 17 Apr 2018)	0.00	0.00
	Set 4 (19 & 25 Apr 2018)	3.24	4.87
	Set 5 (7 & 10 May 2018)	0.00	0.00
	Set 6 (16 & 30 May 2018)	0.00	0.00

Table 3. Comparison of average dolphin encounter rates from impact monitoring period (March-May 2018) and baseline monitoring period (September – November 2011) (Note: encounter rates deduced from the baseline monitoring period have been recalculated based only on survey effort and on-effort sighting data made along the primary transect lines under favourable conditions; ± denotes the standard deviation of the average encounter rates)

	Encounter rate (STG) (no. of on-effort dolphin sightings per 100 km of survey effort)		Encounter rate (ANI) (no. of dolphins from all on-effort sightings per 100 km of survey effort)	
	March – May 2018	September – November 2011	March – May 2018	September – November 2011
Northeast Lantau	0.0	6.00 ± 5.05	0.0	22.19 ± 26.81
Northwest Lantau	2.88 ± 4.81	9.85 ± 5.85	11.12 ± 22.46	44.66 ± 29.85

3.3.3. In NEL, the average dolphin encounter rates (both STG and ANI) in the present three-month impact monitoring period were both zero with no on-effort sighting being made, and such extremely low occurrence of dolphins in NEL have been consistently recorded in the past 20 quarters of HKLR03 monitoring (Table 4). This is a serious concern as the dolphin occurrence in NEL in the past few years (0.0-1.0 for ER(STG) and 0.0-3.9 for ER(ANI)) have remained exceptionally low when compared to the baseline period (Table 4). Dolphins have been virtually absent from NEL waters since January 2014, with only three groups of six dolphins sighted there since then despite consistent and

intensive survey effort being conducted in this survey area.

Table 4. Comparison of average dolphin encounter rates in Northeast Lantau survey area from all quarters of impact monitoring period and baseline monitoring period (September-November 2011) (Note: encounter rates deduced from the baseline monitoring period have been recalculated based only on survey effort and on-effort sighting data made along the primary transect lines under favourable conditions; the encounter rates in **spring** months were highlighted in **blue**; ± denotes the standard deviation of the average encounter rates)

	Encounter rate (STG) (no. of on-effort dolphin sightings per 100 km of survey effort)	Encounter rate (ANI) (no. of dolphins from all on-effort sightings per 100 km of survey effort)
September-November 2011 (Baseline)	6.00 ± 5.05	22.19 ± 26.81
December 2012-February 2013 (Impact)	3.14 ± 3.21	6.33 ± 8.64
March-May 2013 (Impact)	0.42 ± 1.03	0.42 ± 1.03
June-August 2013 (Impact)	0.88 ± 1.36	3.91 ± 8.36
September-November 2013 (Impact)	1.01 ± 1.59	3.77 ± 6.49
December 2013-February 2014 (Impact)	0.45 ± 1.10	1.34 ± 3.29
March-May 2014 (Impact)	0.00	0.00
June-August 2014 (Impact)	0.42 ± 1.04	1.69 ± 4.15
September-November 2014 (Impact)	0.00	0.00
December 2014-February 2015 (Impact)	0.00	0.00
March-May 2015 (Impact)	0.00	0.00
June-August 2015 (Impact)	0.44 ± 1.08	0.44 ± 1.08
September-November 2015 (Impact)	0.00	0.00
December 2015-February 2016 (Impact)	0.00	0.00
March-May 2016 (Impact)	0.00	0.00
June-August 2016 (Impact)	0.00	0.00
September-November 2016 (Impact)	0.00	0.00
December 2016-February 2017 (Impact)	0.00	0.00
March-May 2017 (Impact)	0.00	0.00
June-August 2017 (Impact)	0.00	0.00
September-November 2017 (Impact)	0.00	0.00
December 2017-February 2018 (Impact)	0.00	0.00
March-May 2018 (Impact)	0.00	0.00

3.3.4. On the other hand, the average dolphin encounter rates (STG and ANI) in NWL during the present impact phase monitoring period (reductions of 70.8% and 75.1% respectively) were only small fractions of the ones recorded during the three-month baseline period, indicating a dramatic decline in dolphin usage of

this survey area as well during the present impact phase period (Table 5).

Table 5. Comparison of average dolphin encounter rates in Northwest Lantau survey area from all quarters of impact monitoring period and baseline monitoring period (September-November 2011) (Note: encounter rates deduced from the baseline monitoring period have been recalculated based only on survey effort and on-effort sighting data made along the primary transect lines under favourable conditions; the encounter rates in **spring** months were highlighted in **blue**; \pm denotes the standard deviation of the average encounter rates)

	Encounter rate (STG) (no. of on-effort dolphin sightings per 100 km of survey effort)	Encounter rate (ANI) (no. of dolphins from all on-effort sightings per 100 km of survey effort)
September-November 2011 (Baseline)	9.85 \pm 5.85	44.66 \pm 29.85
December 2012-February 2013 (Impact)	8.36 \pm 5.03	35.90 \pm 23.10
March-May 2013 (Impact)	7.75 \pm 3.96	24.23 \pm 18.05
June-August 2013 (Impact)	6.56 \pm 3.68	27.00 \pm 18.71
September-November 2013 (Impact)	8.04 \pm 1.10	32.48 \pm 26.51
December 2013-February 2014 (Impact)	8.21 \pm 2.21	32.58 \pm 11.21
March-May 2014 (Impact)	6.51 \pm 3.34	19.14 \pm 7.19
June-August 2014 (Impact)	4.74 \pm 3.84	17.52 \pm 15.12
September-November 2014 (Impact)	5.10 \pm 4.40	20.52 \pm 15.10
December 2014-February 2015 (Impact)	2.91 \pm 2.69	11.27 \pm 15.19
March-May 2015 (Impact)	0.47 \pm 0.73	2.36 \pm 4.07
June-August 2015 (Impact)	2.53 \pm 3.20	9.21 \pm 11.57
September-November 2015 (Impact)	3.94 \pm 1.57	21.05 \pm 17.19
December 2015-February 2016 (Impact)	2.64 \pm 1.52	10.98 \pm 3.81
March-May 2016 (Impact)	0.98 \pm 1.10	4.78 \pm 6.85
June-August 2016 (Impact)	1.72 \pm 2.17	7.48 \pm 10.98
September-November 2016 (Impact)	2.86 \pm 1.98	10.89 \pm 10.98
December 2016-February 2017 (Impact)	3.80 \pm 3.79	14.52 \pm 17.21
March-May 2017 (Impact)	0.93 \pm 1.03	5.25 \pm 9.53
June-August 2017 (Impact)	2.20 \pm 2.88	6.58 \pm 8.12
September-November 2017 (Impact)	3.12 \pm 1.91	10.35 \pm 9.66
December 2017-February 2018 (Impact)	4.75 \pm 2.26	15.73 \pm 15.94
March-May 2018 (Impact)	2.88 \pm 4.81	11.12 \pm 22.46

3.3.5. Notably, when comparing the quarterly periods in spring months, the one in 2018 was actually noticeably higher than the ones in the previous three years of 2015-17, while it was lower than the ones in 2013 and 2014. There appeared

to be a rebound in dolphin occurrence in NWL waters during spring months in 2018, and it remained to be seen whether such rebound would be persistent in upcoming spring quarters and other quarters throughout the year. Such temporal trend should be closely monitored in the upcoming monitoring quarters as the construction activities of HZMB works continue to diminish in coming months.

- 3.3.6. A two-way ANOVA with repeated measures and unequal sample size was conducted to examine whether there were any significant differences in the average encounter rates between the baseline and impact monitoring periods. The two variables that were examined included the two periods (baseline and impact phases) and two locations (NEL and NWL).
- 3.3.7. For the comparison between the baseline period and the present quarter (22nd quarter of the impact phase being assessed), the p-values for the differences in average dolphin encounter rates of STG and ANI were 0.0095 and 0.0390 respectively. If the alpha value is set at 0.05, significant differences were detected between the baseline and present quarters in both the average dolphin encounter rates of STG and ANI.
- 3.3.8. For the comparison between the baseline period and the cumulative quarters in impact phase (i.e. the first 22 quarters of the impact phase being assessed), the p-values for the differences in average dolphin encounter rates of STG and ANI were 0.000000 and 0.000000 respectively. Even if the alpha value is set at 0.00001, significant differences were still detected in both the average dolphin encounter rates of STG and ANI (i.e. between the two periods and the locations).
- 3.3.9. As indicated in both dolphin distribution patterns and encounter rates, dolphin usage has been significantly reduced in both NEL and NWL survey areas during the present quarterly period when compared to the baseline period, and such low occurrence of dolphins has also been consistently documented in previous quarters of the past few years.
- 3.3.10. The significant decline in dolphin usage of North Lantau region raises serious concern, as the timing of the decline in dolphin usage in North Lantau waters coincided well with the construction schedule of the HZMB-related projects (Hung 2017). Apparently there was very little sign of recovery of dolphin usage, even though almost all marine works associated with the HZMB construction have been completed.

3.4. *Group size*

3.4.1. Group size of Chinese White Dolphins ranged from one to twelve individuals per group in North Lantau region during March to May 2018. The average dolphin group sizes from these three months were compared with the ones deduced from the baseline period in September to November 2011, as shown in Table 6.

Table 6. Comparison of average dolphin group sizes from impact monitoring period (March – May 2018) and baseline monitoring period (September – November 2011) (Note: ± denotes the standard deviation of the average group size)

	Average Dolphin Group Size	
	March – May 2018	September – November 2011
Overall	3.33 ± 3.39 (n = 9)	3.72 ± 3.13 (n = 66)
Northeast Lantau	---	3.18 ± 2.16 (n = 17)
Northwest Lantau	3.33 ± 3.39 (n = 9)	3.92 ± 3.40 (n = 49)

3.4.2. The average dolphin group size in NWL waters during March to May 2018 was slightly lower than the one recorded during the three-month baseline period, but it should also be noted that the sample size of nine dolphin groups in the present quarter was very small when compared to the 66 groups sighted during the baseline period (Table 6).

3.4.3. Notably, with the exception of a large group of twelve animals, the other eight dolphin groups were composed of 1-4 individuals only (Annex II).

3.4.4. Distribution of the lone larger dolphin group with 12 individuals during the present quarter is shown in Figure 3, with comparison to the one in baseline period. That large dolphin group sighted in the present quarter was located at the western territory border between Sha Chau and Lung Kwu Chau (Figure 3). Such distribution pattern was very different from the baseline period, when the larger dolphin groups were frequently sighted and evenly distributed in NWL waters, and a few were also sighted in NEL waters (Figure 3).

3.5. *Habitat use*

3.5.1. From March to May 2018, the grids that recorded moderately high to high dolphin densities were located to the northeast of Lung Kwu Chau and west of Sha Chau (Figures 4a and 4b). The rest of the grids that recorded dolphin occurrence were low in densities, and scattered near Lung Kwu Chau and at the mouth of Deep Bay (Figures 4a and 4b).

3.5.2. Notably, all grids near HKLR03/HKBCF reclamation sites as well as

TMCLKL/HKLR09 alignments did not record any presence of dolphins at all during on-effort search in the present quarterly period (Figures 4a and 4b).

- 3.5.3. It should be emphasized that the amount of survey effort collected in each grid during the three-month period was fairly low (6-12 units of survey effort for most grids), and therefore the habitat use pattern derived from the three-month dataset should be treated with caution. A more complete picture of dolphin habitat use pattern should be examined when more survey effort for each grid is collected throughout the impact phase monitoring programme.
- 3.5.4. When compared with the habitat use patterns during the baseline period, dolphin usage in NEL and NWL has drastically diminished in both areas during the present impact monitoring period (Figure 5). During the baseline period, many grids between Siu Mo To and Shum Shui Kok in NEL recorded moderately high to high dolphin densities, which was in stark contrast to the complete absence of dolphins there during the present impact phase period (Figure 5).
- 3.5.5. The density patterns were also drastically different in NWL between the baseline and impact phase monitoring periods, with high dolphin usage recorded throughout the area, especially around Sha Chau, near Black Point, to the west of the airport, as well as between Pillar Point and airport platform during the baseline period. In contrast, only several grids with moderately high to high dolphin densities were located within Sha Chau and Lung Kwu Chau Marine Park during the present impact phase period (Figure 5).
- 3.6. *Mother-calf pairs*
 - 3.6.1. During the present quarterly period, no young calf was sighted at all among the nine groups of dolphins.
- 3.7. *Activities and associations with fishing boats*
 - 3.7.1. Only one of the nine dolphin groups were engaged in feeding activity, while no group was engaged in socializing, traveling or milling/resting activity during the three-month study period.
 - 3.7.2. The percentage of sightings associated with feeding activity (11.1%) was very similar to the one recorded during the baseline period (11.6%). However, it should be noted the sample sizes on total numbers of dolphin sightings were very different between the two periods.
 - 3.7.3. Distribution of dolphins engaged in various activities during the present three-month period and baseline period is shown in Figure 6. The only

dolphin group engaged in feeding activity was sighted to the east of Lung Kwu Chau (Figure 6). When compared to the baseline period, distribution of various dolphin activities during the present impact phase monitoring period was very different with a much more restricted area of occurrences (Figure 6).

3.7.4. Notably, none of the dolphin groups was found to be associated with any operating fishing vessel during the present impact phase period.

3.8. *Summary of photo-identification works*

3.8.1. From March to May 2018, over 1,000 digital photographs of Chinese White Dolphins were taken during the impact phase monitoring surveys for the photo-identification work.

3.8.2. In total, 14 individuals sighted 16 times altogether were identified (see summary table in Annex III and photographs of identified individuals in Annex IV). All of these re-sightings were made in NWL. Only two individuals (NL182 and NL226) were re-sighted twice, while the other 12 individuals were re-sighted only once during the three-month period (Annex III).

3.8.3. Notably, five of these 14 individuals (i.e. CH34, NL136, NL182, NL261 and NL286) were also sighted in Northwest Lantau waters during the HKBCF monitoring surveys under the same three-month period. Moreover, two individuals (NL269 and WL179) were also sighted in West Lantau waters during the HKLR09 monitoring surveys from March to May 2018, showing their extensive movements across different survey areas.

3.9. *Individual range use*

3.9.1. Ranging patterns of the 14 individuals identified during the three-month study period were determined by fixed kernel method, and are shown in Annex V.

3.9.2. All identified dolphins sighted in the present quarter were utilizing NWL waters only, but have completely avoided NEL waters where many of them have utilized as their core areas in the past (Annex V). This is in contrary to the extensive movements between NEL and NWL survey areas observed in the earlier impact monitoring quarters as well as the baseline period.

3.9.3. On the other hand, there were several individuals (i.e. WL124, WL145 and WL179) that have consistently utilized WL waters in the past, but have extended their range use to NWL waters during the present quarter.

3.9.4. In the upcoming quarters, individual range use and movements should be continuously monitored to examine whether there has been any consistent shifts

of individual home ranges from North Lantau to West or Southwest Lantau and vice versa, as such shift could possibly be related to the HZMB-related construction works (see Hung 2017).

4. Conclusion

- 4.1. During the present quarter of dolphin monitoring, no adverse impact from the activities of this construction project on Chinese White Dolphins was noticeable from general observations.
- 4.2. Although dolphins rarely occurred in the area of HKLR03 construction in the past and during the baseline monitoring period, it is apparent that dolphin usage has been dramatically reduced in NEL since 2012, and many individuals have shifted away completely from the important habitat around the Brothers Islands.
- 4.3. It is critical to continuously monitor the dolphin usage in North Lantau region in the upcoming quarters, to determine whether the dolphins are continuously affected by the various construction activities in relation to the HZMB-related works, and whether suitable mitigation measure can be applied to revert the situation.

5. References

- Buckland, S. T., Anderson, D. R., Burnham, K. P., Laake, J. L., Borchers, D. L., and Thomas, L. 2001. Introduction to distance sampling: estimating abundance of biological populations. Oxford University Press, London.
- Hung, S. K. 2017. Monitoring of Marine Mammals in Hong Kong waters: final report (2016-17). An unpublished report submitted to the Agriculture, Fisheries and Conservation Department, 162 pp.
- Jefferson, T. A. 2000. Population biology of the Indo-Pacific hump-backed dolphin in Hong Kong waters. Wildlife Monographs 144:1-65.

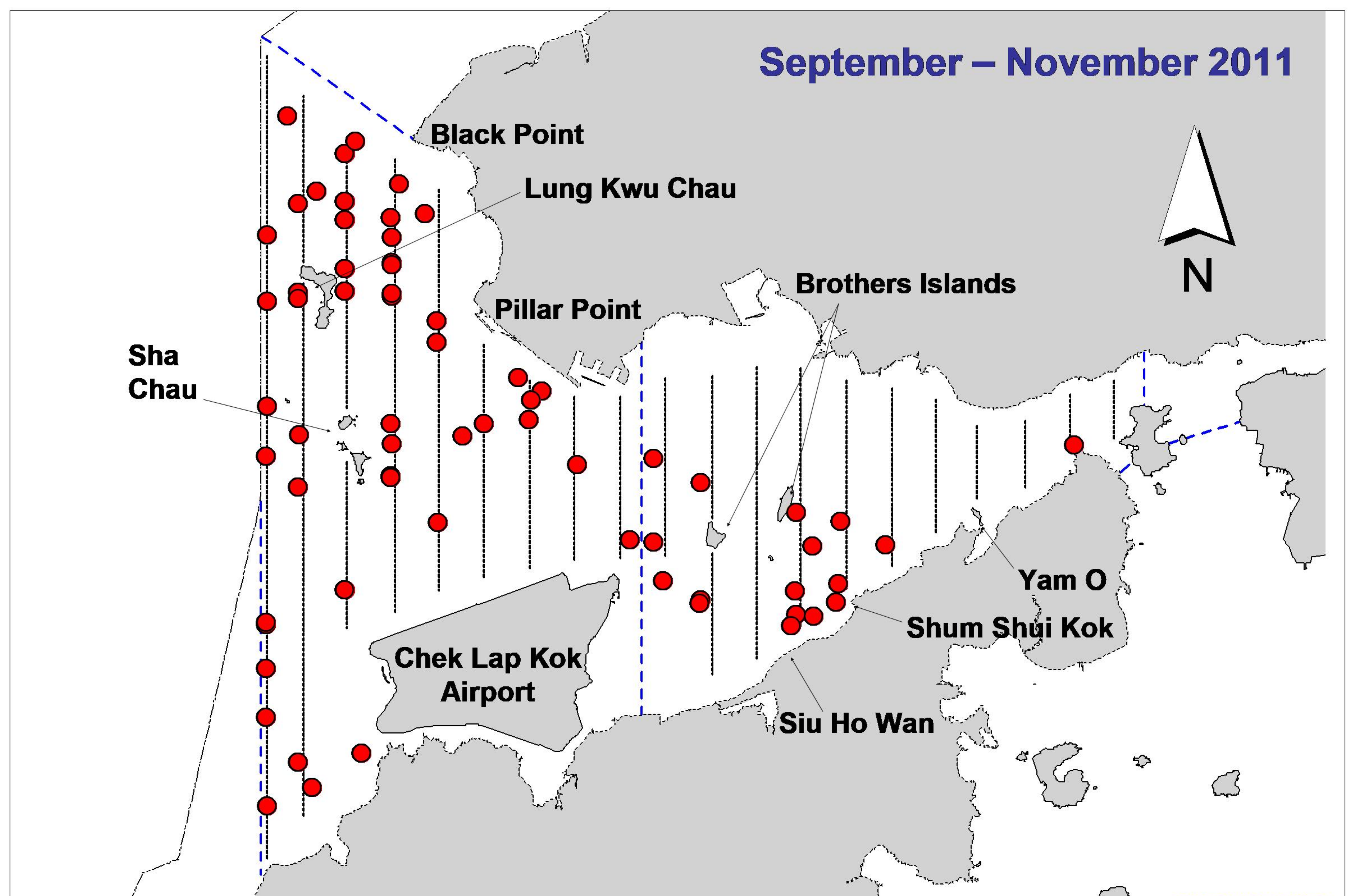
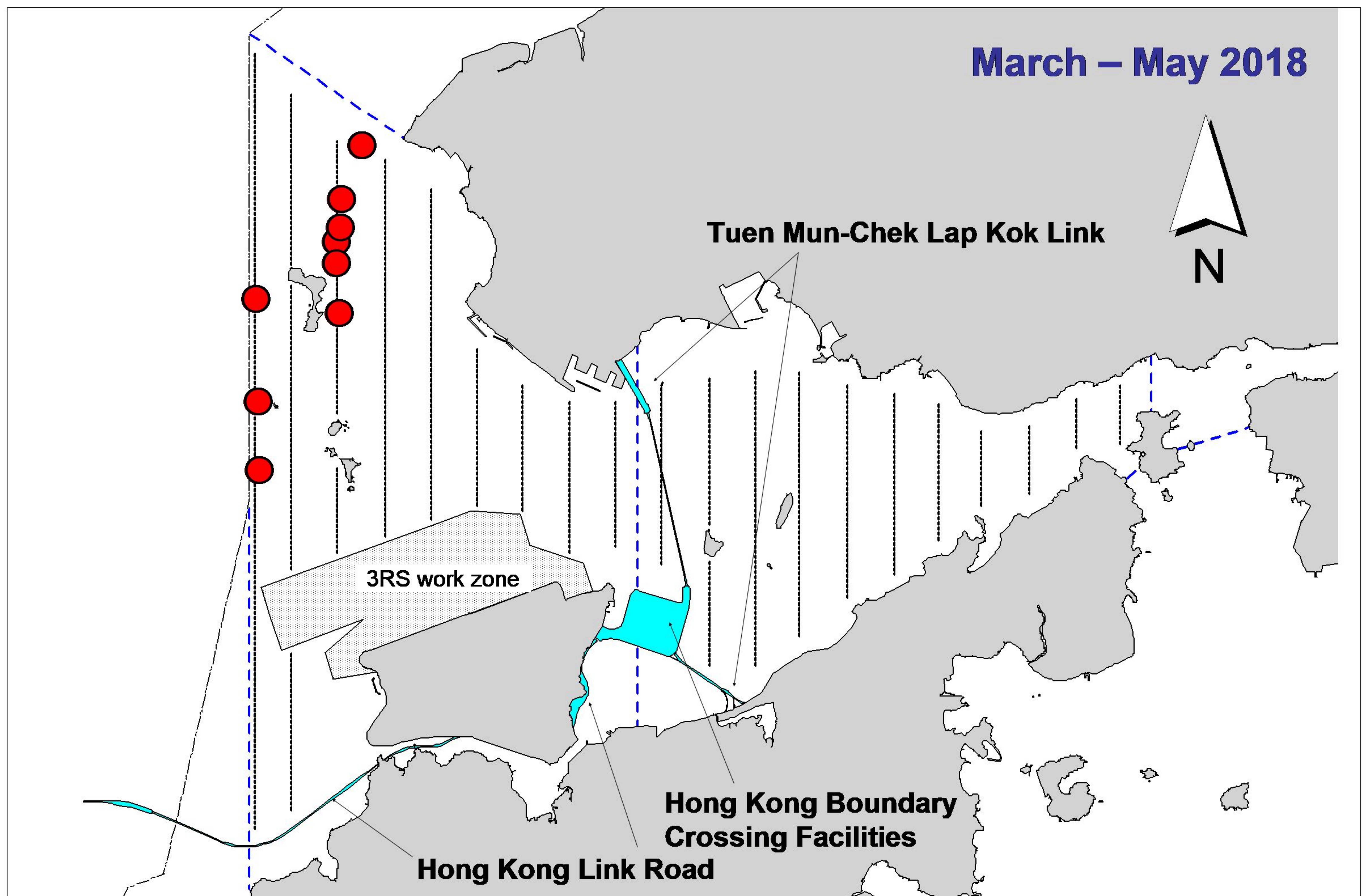


Figure 1. Distribution of Chinese white dolphin sighting in Northwest and Northeast Lantau during HKLR03 impact phase (top) and baseline monitoring surveys (bottom)

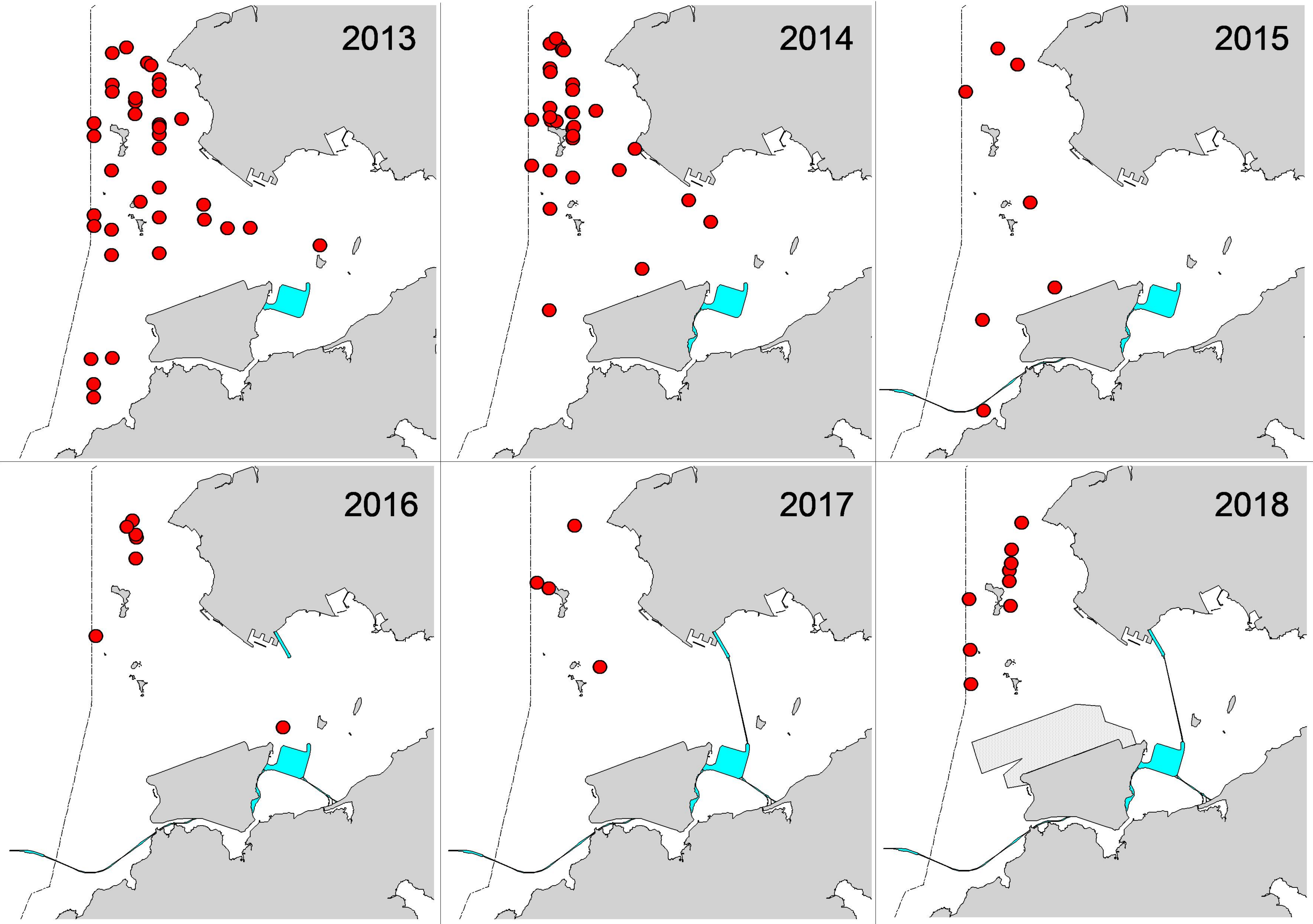


Figure 2. Distribution of Chinese white dolphin sightings in Northwest and Northeast Lantau during the past six spring quarters (March-May) of HKLR03 impact phase in 2013-18

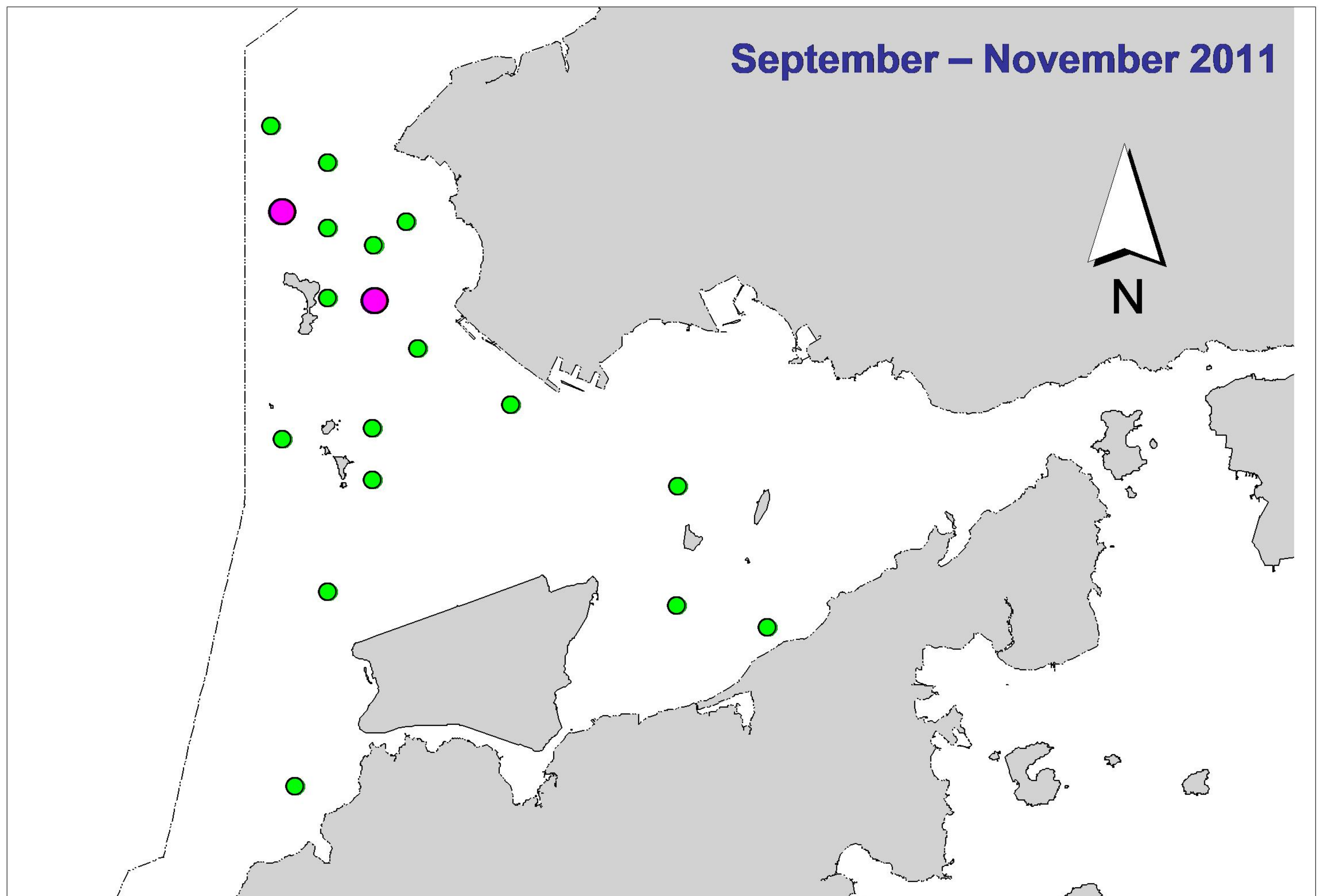
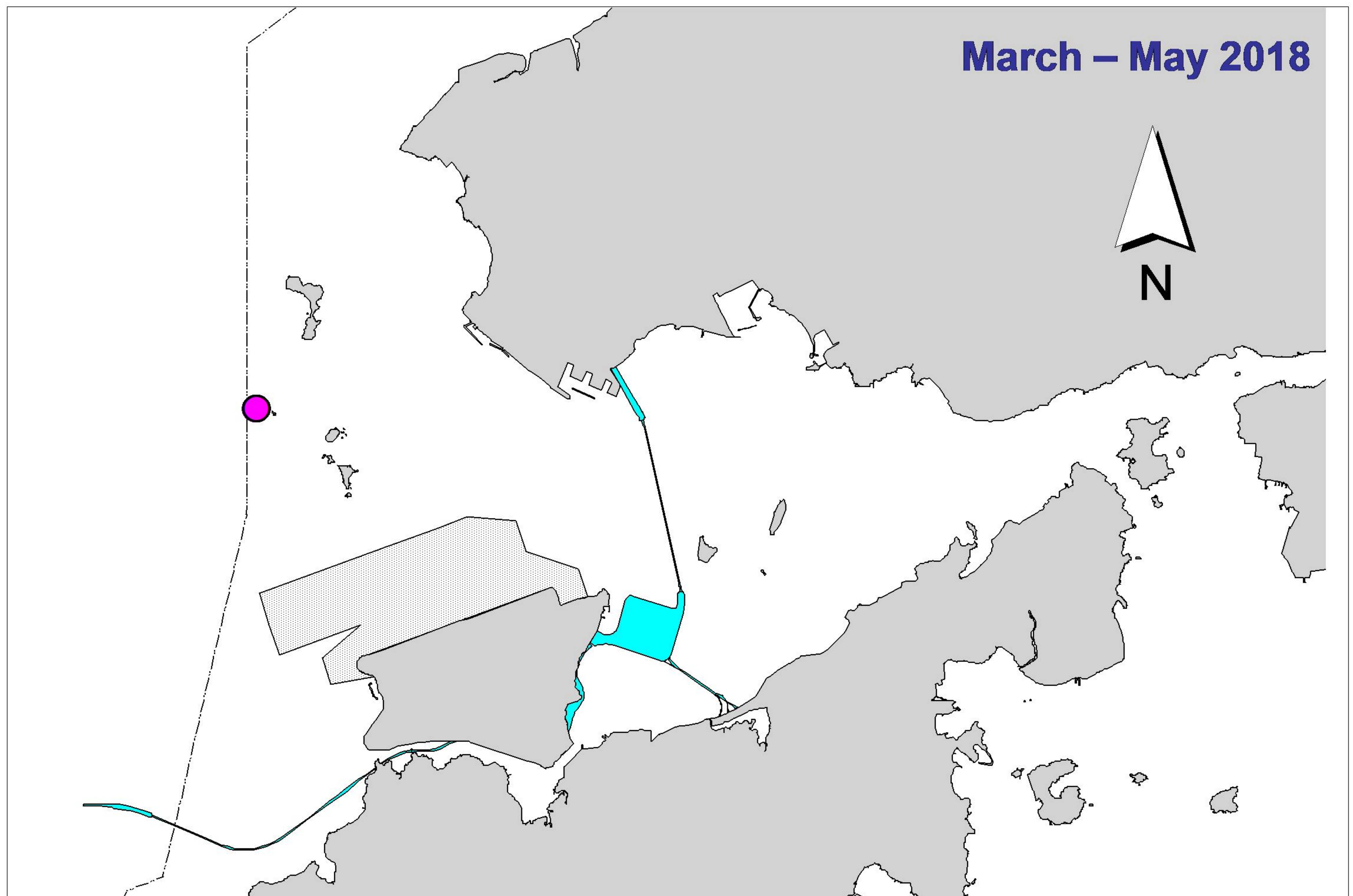


Figure 3. Distribution of Chinese white dolphins with larger group sizes during HKLR03 impact phase (top) and baseline monitoring surveys (bottom) (green dots: group sizes of 5 or more; purple dots: group sizes of 10 or more)

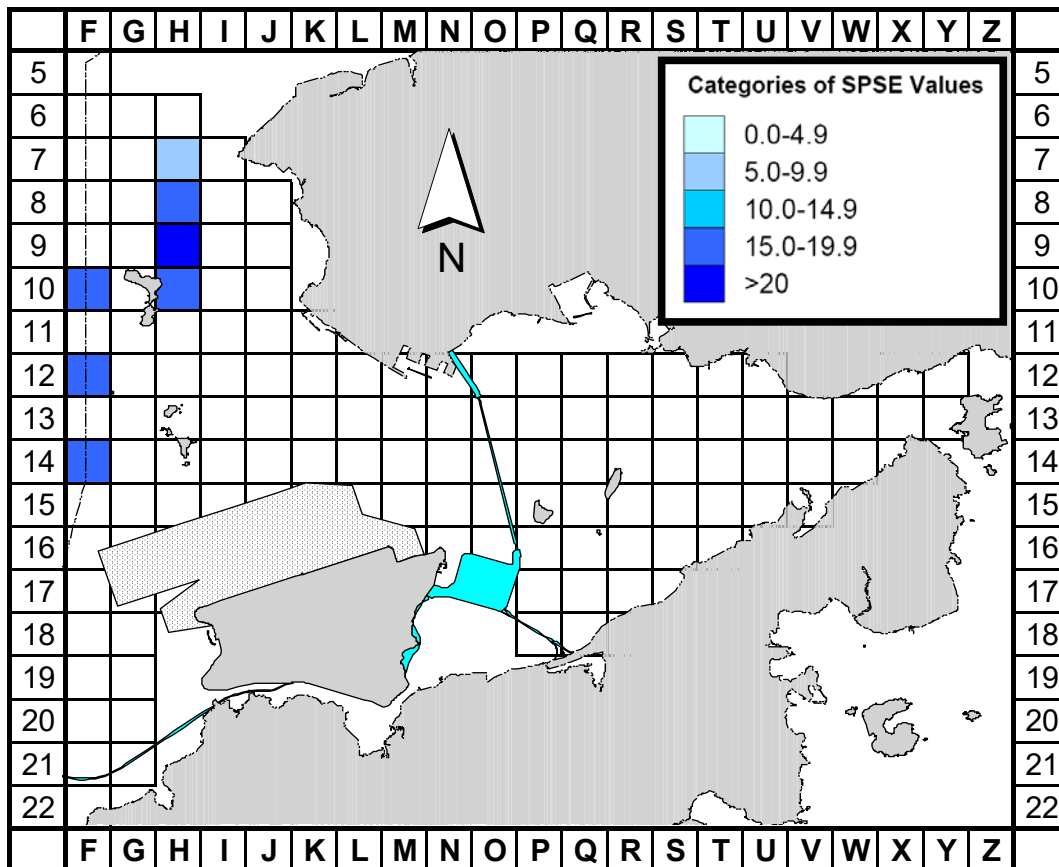


Figure 4a. Sighting density of Chinese white dolphins with corrected survey effort per km² in Northeast and Northwest Lantau survey areas, using data collected during HKLR03 impact monitoring period (March-May 18) (SPSE = no. of on-effort sightings per 100 units of survey effort)

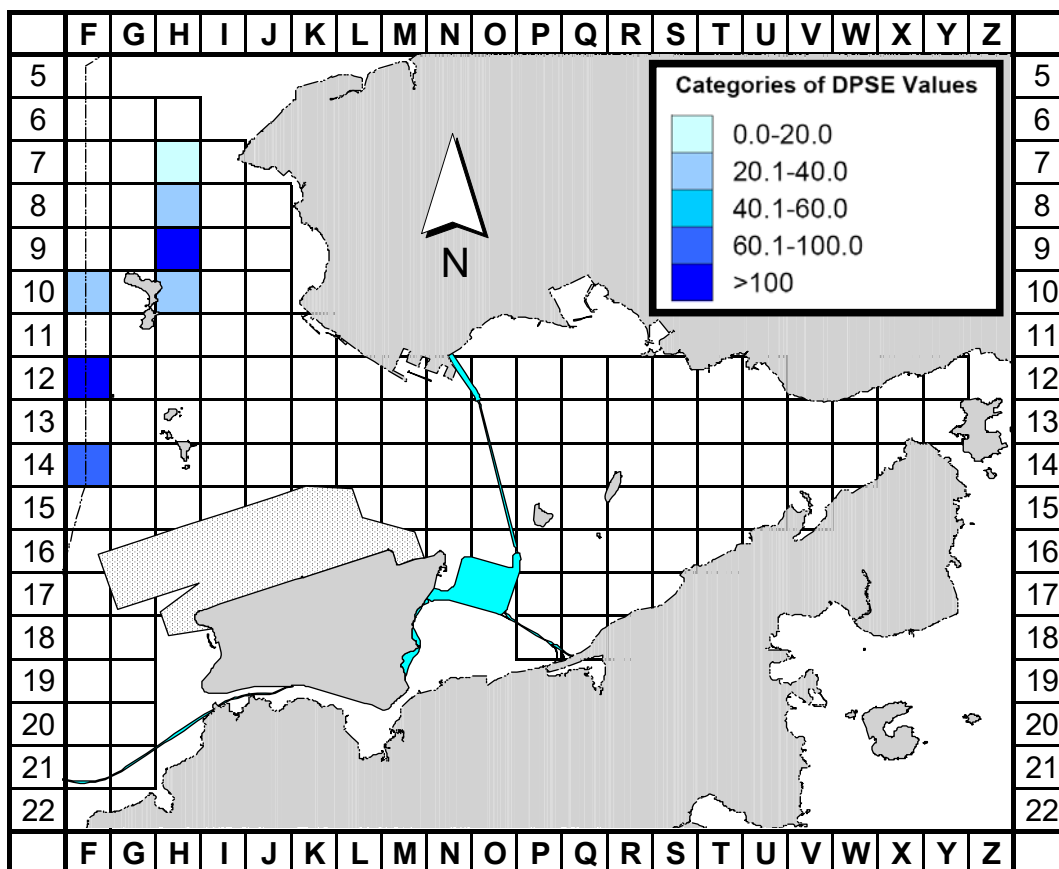


Figure 4b. Density of Chinese white dolphins with corrected survey effort per km² in Northeast and Northwest Lantau survey areas, using data collected during HKLR03 impact monitoring period (March-May 18) (DPSE = no. of dolphins per 100 units of survey effort)

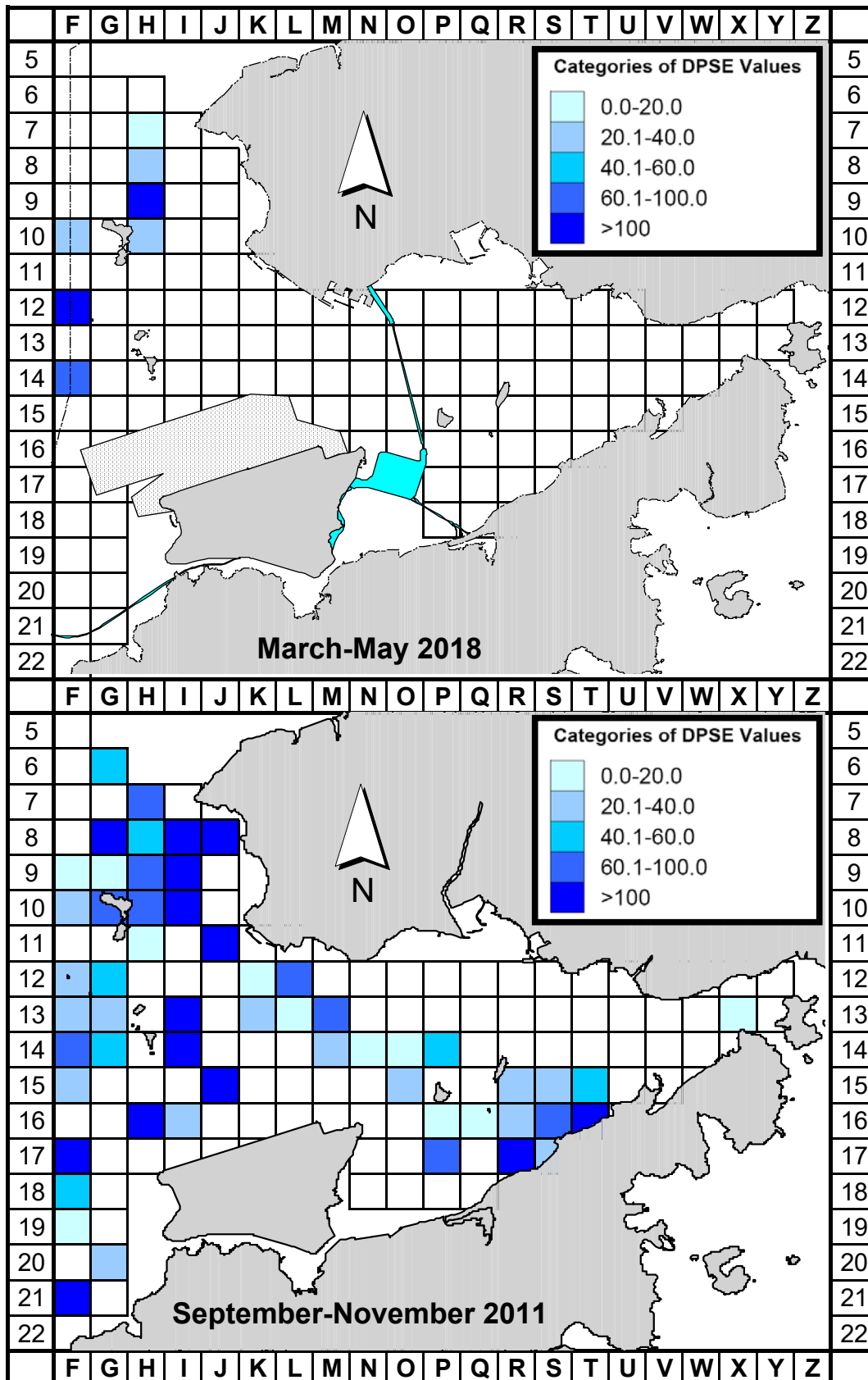


Figure 5. Comparison of density of Chinese white dolphins with corrected survey effort per km² in Northwest and Northeast Lantau survey area between the impact monitoring period (March - May 2018) and baseline monitoring period (September-November 2011) (DPSE = no. of dolphins per 100 units of survey effort)

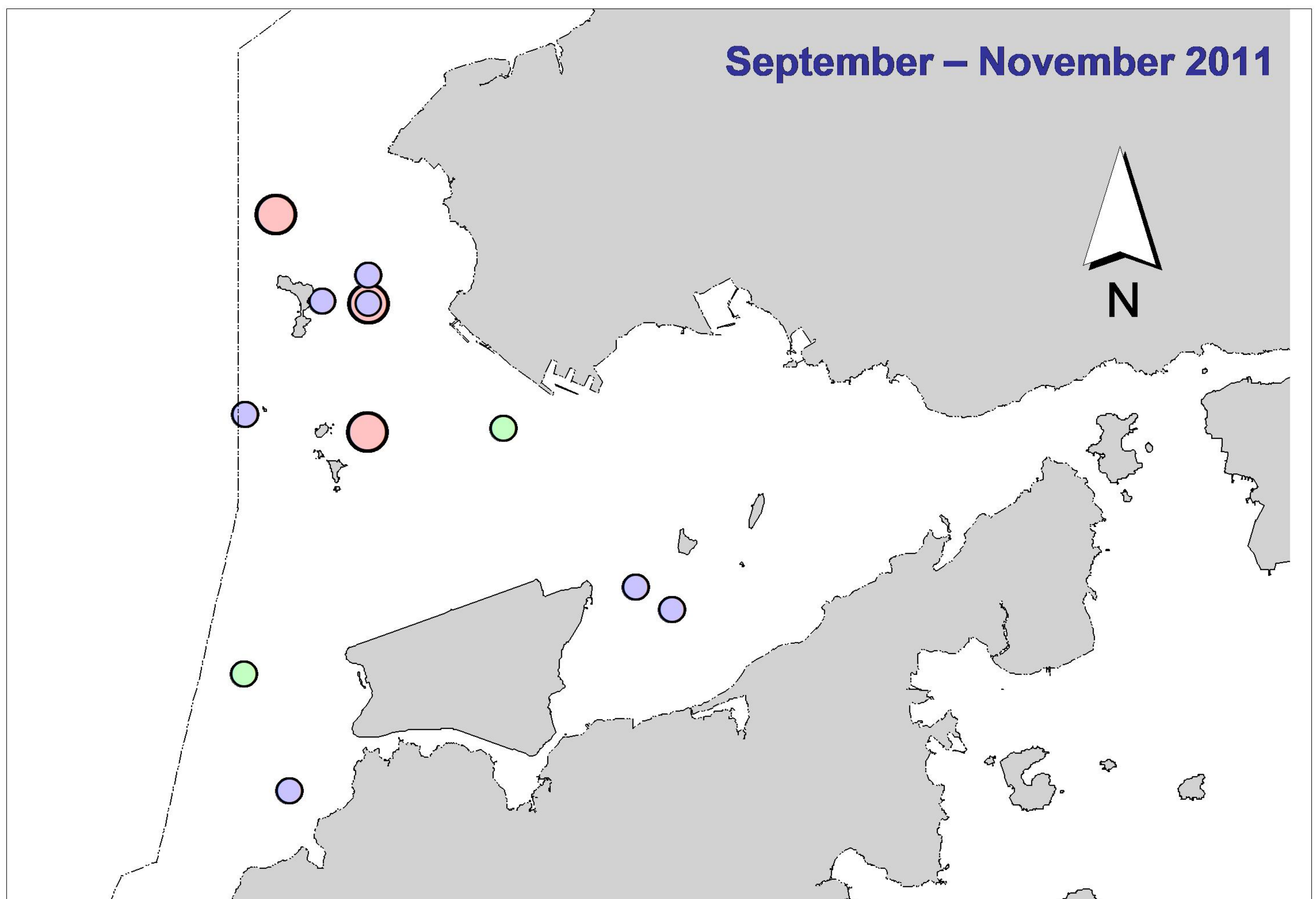
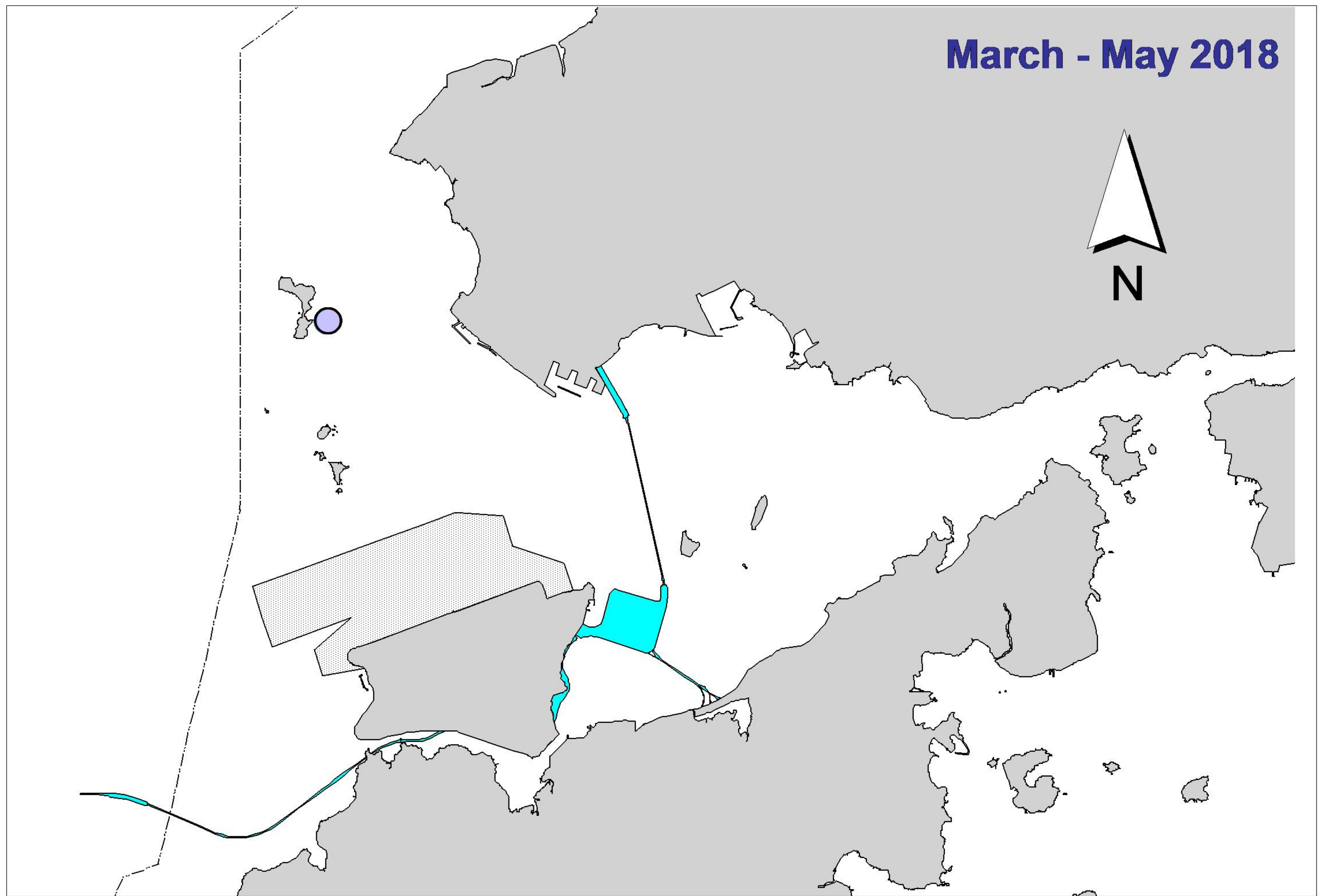


Figure 6. Distribution of Chinese white dolphins engaged in feeding (purple dots), socializing (pink dots) and traveling (green dots) activities during HKLR03 impact phase (top) and baseline monitoring surveys (bottom)

Annex I. HKLR03 Survey Effort Database (March-May 2018)

(Abbreviations: BEAU = Beaufort Sea State; P = Primary Line Effort; S = Secondary Line Effort)

DATE	AREA	BEAU	EFFORT	SEASON	VESSEL	TYPE	P/S
8-Mar-18	NE LANTAU	2	21.56	SPRING	STANDARD36826	HKLR	P
8-Mar-18	NE LANTAU	3	13.44	SPRING	STANDARD36826	HKLR	P
8-Mar-18	NE LANTAU	2	6.79	SPRING	STANDARD36826	HKLR	S
8-Mar-18	NE LANTAU	3	4.71	SPRING	STANDARD36826	HKLR	S
8-Mar-18	NW LANTAU	2	5.20	SPRING	STANDARD36826	HKLR	P
8-Mar-18	NW LANTAU	3	17.08	SPRING	STANDARD36826	HKLR	P
8-Mar-18	NW LANTAU	4	2.40	SPRING	STANDARD36826	HKLR	P
8-Mar-18	NW LANTAU	2	3.42	SPRING	STANDARD36826	HKLR	S
8-Mar-18	NW LANTAU	3	1.60	SPRING	STANDARD36826	HKLR	S
8-Mar-18	NW LANTAU	4	5.60	SPRING	STANDARD36826	HKLR	S
12-Mar-18	NW LANTAU	1	4.88	SPRING	STANDARD36826	HKLR	P
12-Mar-18	NW LANTAU	2	30.68	SPRING	STANDARD36826	HKLR	P
12-Mar-18	NW LANTAU	1	1.00	SPRING	STANDARD36826	HKLR	S
12-Mar-18	NW LANTAU	2	12.34	SPRING	STANDARD36826	HKLR	S
20-Mar-18	NE LANTAU	2	7.92	SPRING	STANDARD36826	HKLR	P
20-Mar-18	NE LANTAU	3	26.28	SPRING	STANDARD36826	HKLR	P
20-Mar-18	NE LANTAU	4	3.00	SPRING	STANDARD36826	HKLR	P
20-Mar-18	NE LANTAU	2	4.82	SPRING	STANDARD36826	HKLR	S
20-Mar-18	NE LANTAU	3	8.18	SPRING	STANDARD36826	HKLR	S
20-Mar-18	NE LANTAU	4	1.30	SPRING	STANDARD36826	HKLR	S
20-Mar-18	NW LANTAU	2	0.77	SPRING	STANDARD36826	HKLR	P
20-Mar-18	NW LANTAU	3	6.09	SPRING	STANDARD36826	HKLR	P
20-Mar-18	NW LANTAU	4	17.10	SPRING	STANDARD36826	HKLR	P
20-Mar-18	NW LANTAU	5	2.10	SPRING	STANDARD36826	HKLR	P
20-Mar-18	NW LANTAU	3	3.40	SPRING	STANDARD36826	HKLR	S
20-Mar-18	NW LANTAU	4	4.54	SPRING	STANDARD36826	HKLR	S
20-Mar-18	NW LANTAU	5	2.60	SPRING	STANDARD36826	HKLR	S
23-Mar-18	NW LANTAU	1	4.22	SPRING	STANDARD36826	HKLR	P
23-Mar-18	NW LANTAU	2	19.38	SPRING	STANDARD36826	HKLR	P
23-Mar-18	NW LANTAU	3	10.11	SPRING	STANDARD36826	HKLR	P
23-Mar-18	NW LANTAU	2	9.28	SPRING	STANDARD36826	HKLR	S
23-Mar-18	NW LANTAU	3	1.55	SPRING	STANDARD36826	HKLR	S
10-Apr-18	NW LANTAU	2	23.74	SPRING	STANDARD36826	HKLR	P
10-Apr-18	NW LANTAU	3	1.23	SPRING	STANDARD36826	HKLR	P
10-Apr-18	NW LANTAU	2	11.73	SPRING	STANDARD36826	HKLR	S
17-Apr-18	NW LANTAU	1	2.20	SPRING	STANDARD36826	HKLR	P
17-Apr-18	NW LANTAU	2	33.50	SPRING	STANDARD36826	HKLR	P
17-Apr-18	NW LANTAU	2	14.10	SPRING	STANDARD36826	HKLR	S
17-Apr-18	NE LANTAU	1	1.20	SPRING	STANDARD36826	HKLR	P
17-Apr-18	NE LANTAU	2	34.52	SPRING	STANDARD36826	HKLR	P
17-Apr-18	NE LANTAU	1	1.10	SPRING	STANDARD36826	HKLR	S
17-Apr-18	NE LANTAU	2	12.58	SPRING	STANDARD36826	HKLR	S
19-Apr-18	NW LANTAU	1	3.85	SPRING	STANDARD36826	HKLR	P
19-Apr-18	NW LANTAU	2	8.59	SPRING	STANDARD36826	HKLR	P
19-Apr-18	NW LANTAU	3	20.48	SPRING	STANDARD36826	HKLR	P
19-Apr-18	NW LANTAU	1	2.26	SPRING	STANDARD36826	HKLR	S
19-Apr-18	NW LANTAU	2	8.21	SPRING	STANDARD36826	HKLR	S
25-Apr-18	NW LANTAU	1	10.61	SPRING	STANDARD36826	HKLR	P
25-Apr-18	NW LANTAU	2	18.13	SPRING	STANDARD36826	HKLR	P
25-Apr-18	NW LANTAU	1	1.60	SPRING	STANDARD36826	HKLR	S

Annex I. (cont'd)

(Abbreviations: BEAU = Beaufort Sea State; P = Primary Line Effort; S = Secondary Line Effort)

DATE	AREA	BEAU	EFFORT	SEASON	VESSEL	TYPE	P/S
25-Apr-18	NW LANTAU	2	9.66	SPRING	STANDARD36826	HKLR	S
25-Apr-18	NE LANTAU	2	36.91	SPRING	STANDARD36826	HKLR	P
25-Apr-18	NE LANTAU	2	10.89	SPRING	STANDARD36826	HKLR	S
7-May-18	NW LANTAU	3	18.59	SPRING	STANDARD36826	HKLR	P
7-May-18	NW LANTAU	4	5.80	SPRING	STANDARD36826	HKLR	P
7-May-18	NW LANTAU	3	9.41	SPRING	STANDARD36826	HKLR	S
7-May-18	NE LANTAU	2	22.70	SPRING	STANDARD36826	HKLR	P
7-May-18	NE LANTAU	3	11.82	SPRING	STANDARD36826	HKLR	P
7-May-18	NE LANTAU	2	7.15	SPRING	STANDARD36826	HKLR	S
7-May-18	NE LANTAU	3	5.23	SPRING	STANDARD36826	HKLR	S
10-May-18	NW LANTAU	3	13.41	SPRING	STANDARD36826	HKLR	P
10-May-18	NW LANTAU	4	21.03	SPRING	STANDARD36826	HKLR	P
10-May-18	NW LANTAU	3	6.20	SPRING	STANDARD36826	HKLR	S
10-May-18	NW LANTAU	4	6.66	SPRING	STANDARD36826	HKLR	S
16-May-18	NE LANTAU	2	19.20	SPRING	STANDARD36826	HKLR	P
16-May-18	NE LANTAU	3	17.50	SPRING	STANDARD36826	HKLR	P
16-May-18	NE LANTAU	2	11.20	SPRING	STANDARD36826	HKLR	S
16-May-18	NE LANTAU	3	0.90	SPRING	STANDARD36826	HKLR	S
16-May-18	NW LANTAU	2	4.80	SPRING	STANDARD36826	HKLR	P
16-May-18	NW LANTAU	3	27.00	SPRING	STANDARD36826	HKLR	P
16-May-18	NW LANTAU	2	4.50	SPRING	STANDARD36826	HKLR	S
16-May-18	NW LANTAU	3	6.50	SPRING	STANDARD36826	HKLR	S
30-May-18	NW LANTAU	2	2.60	SPRING	STANDARD36826	HKLR	P
30-May-18	NW LANTAU	3	18.99	SPRING	STANDARD36826	HKLR	P
30-May-18	NW LANTAU	4	6.00	SPRING	STANDARD36826	HKLR	P
30-May-18	NW LANTAU	2	4.90	SPRING	STANDARD36826	HKLR	S
30-May-18	NW LANTAU	3	6.81	SPRING	STANDARD36826	HKLR	S
30-May-18	NW LANTAU	4	2.50	SPRING	STANDARD36826	HKLR	S

Annex II. HKLR03 Chinese White Dolphin Sighting Database (March-May 2018)

(Abberviations: STG# = Sighting Number; HRD SZ = Dolphin Herd Size; BEAU = Beaufort Sea State; PSD = Perpendicular Distance; BOAT ASSOC. = Fishing Boat Association P/S: Sighting Made on Primary/Secondary Lines)

DATE	STG #	TIME	HRD SZ	AREA	BEAU	PSD	EFFORT	TYPE	NORTHING	EASTING	SEASON	BOAT ASSOC.	P/S
12-Mar-18	1	1207	3	NW LANTAU	1	149	ON	HKLR	827547	806417	SPRING	NONE	P
23-Mar-18	1	1046	4	NW LANTAU	3	705	ON	HKLR	822867	804739	SPRING	NONE	P
23-Mar-18	2	1055	12	NW LANTAU	2	96	ON	HKLR	824284	804721	SPRING	NONE	P
23-Mar-18	3	1122	2	NW LANTAU	2	251	ON	HKLR	826377	804684	SPRING	NONE	P
23-Mar-18	4	1322	2	NW LANTAU	1	515	ON	HKLR	828400	806542	SPRING	NONE	P
23-Mar-18	5	1328	3	NW LANTAU	2	486	ON	HKLR	827846	806510	SPRING	NONE	P
10-Apr-18	1	1125	1	NW LANTAU	2	24	ON	HKLR	829507	806966	SPRING	NONE	S
19-Apr-18	1	1133	2	NW LANTAU	3	363	ON	HKLR	826075	806486	SPRING	NONE	P
19-Apr-18	2	1146	1	NW LANTAU	3	208	ON	HKLR	827093	806426	SPRING	NONE	P

Annex III. Individual dolphins identified during HKLR03 monitoring surveys in March - May 2018

ID#	DATE	STG#	AREA
CH34	12/03/18	1	NW LANTAU
NL98	23/03/18	2	NW LANTAU
NL120	23/03/18	2	NW LANTAU
NL136	12/03/18	1	NW LANTAU
NL182	12/03/18	1	NW LANTAU
	19/04/18	2	NW LANTAU
NL226	23/03/18	2	NW LANTAU
	19/04/18	1	NW LANTAU
NL261	19/04/18	1	NW LANTAU
NL269	23/03/18	2	NW LANTAU
NL286	10/04/18	1	NW LANTAU
NL329	23/03/18	2	NW LANTAU
WL124	23/03/18	2	NW LANTAU
WL145	23/03/18	2	NW LANTAU
WL179	23/03/18	2	NW LANTAU
WL276	23/03/18	2	NW LANTAU

Annex IV. Fourteen individual dolphins that were identified during March to May 2018 under HKLR03 impact phase monitoring surveys



Annex IV. (cont'd)

NL182



NL226



NL261



NL269



Annex IV. (cont'd)

NL286



NL329



WL124



WL145



Annex IV. (cont'd)

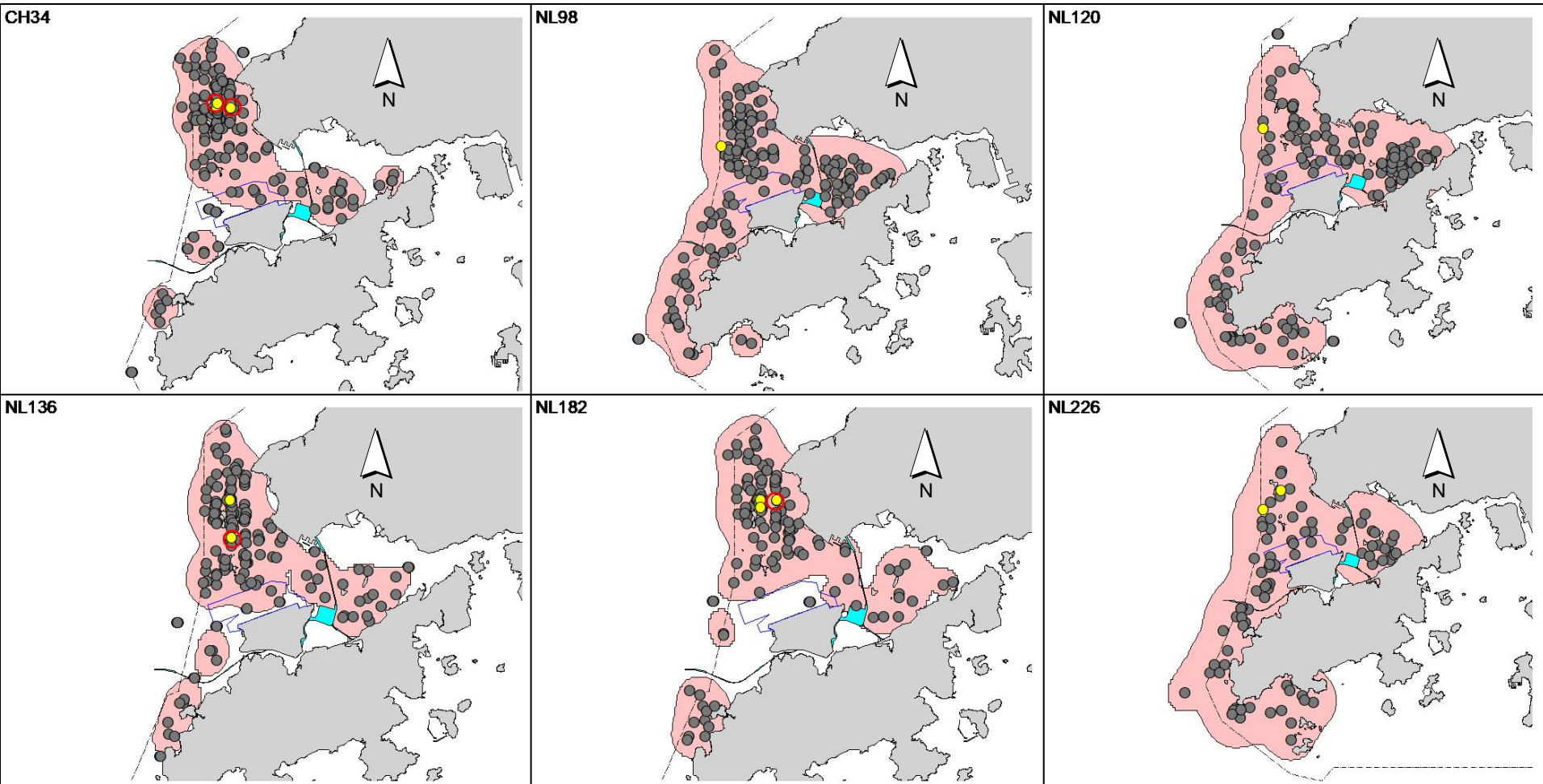
WL179



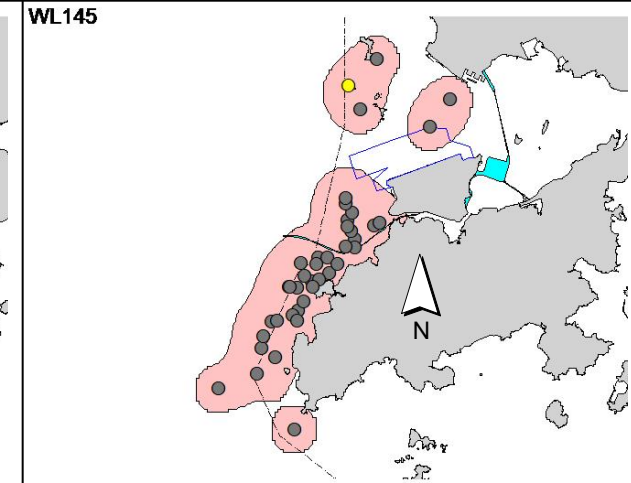
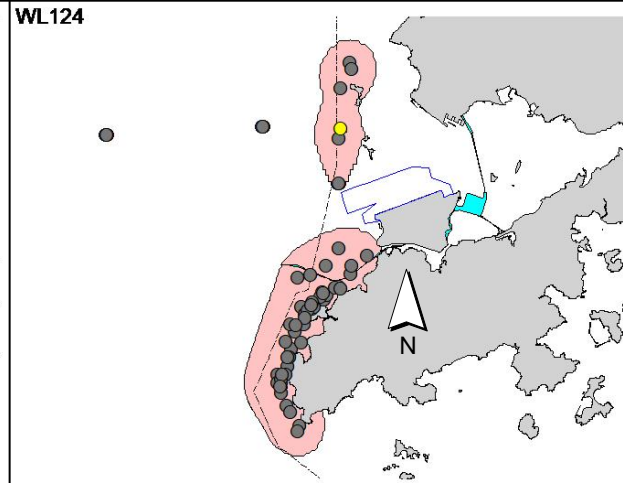
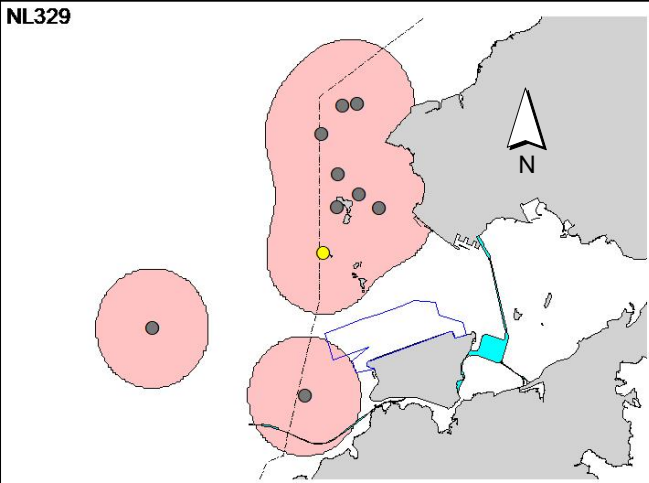
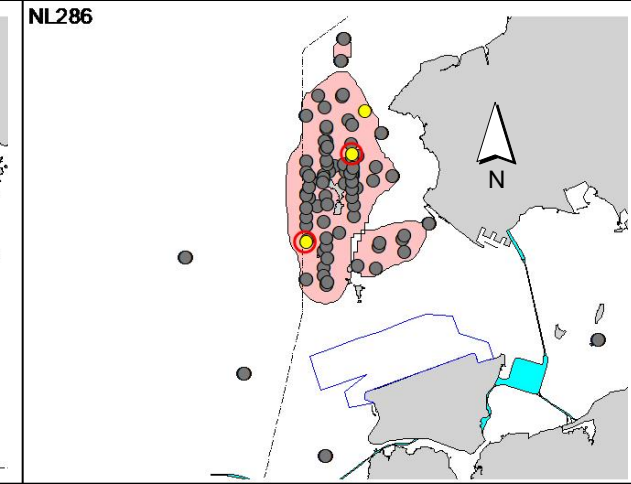
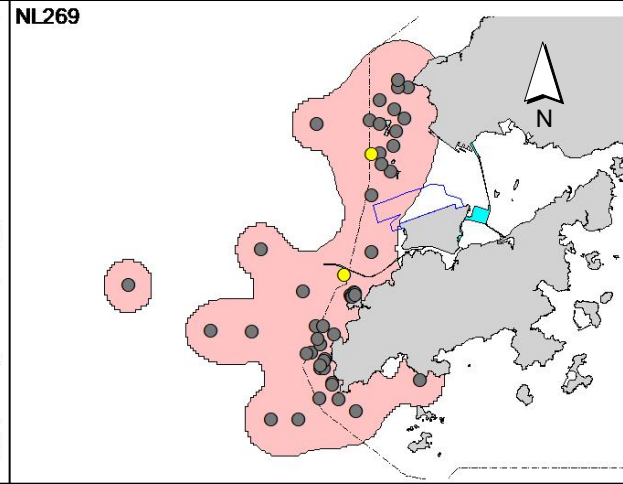
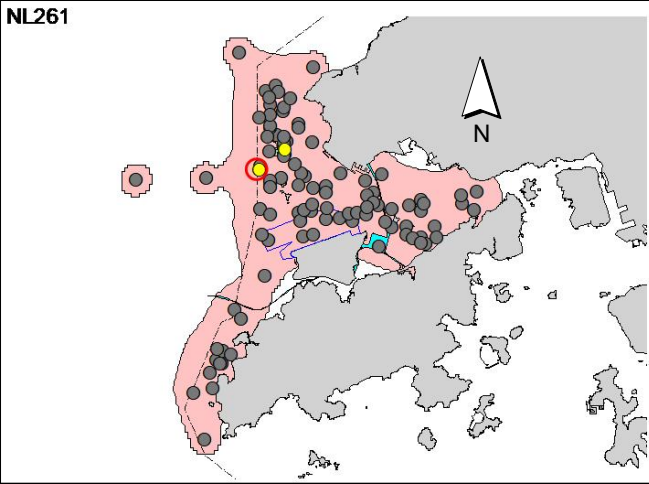
WL276



Annex V. Ranging patterns (95% kernel ranges) of 14 individual dolphins that were sighted during HKLR03 impact phase monitoring period (note: yellow dots indicate sightings made in March-May 2018 during HKLR03 and HKLR09 monitoring surveys; the yellow dots with the red circles indicate the ones made during HKBCF monitoring surveys)



Annex V. (cont'd)



Annex V. (cont'd)

