

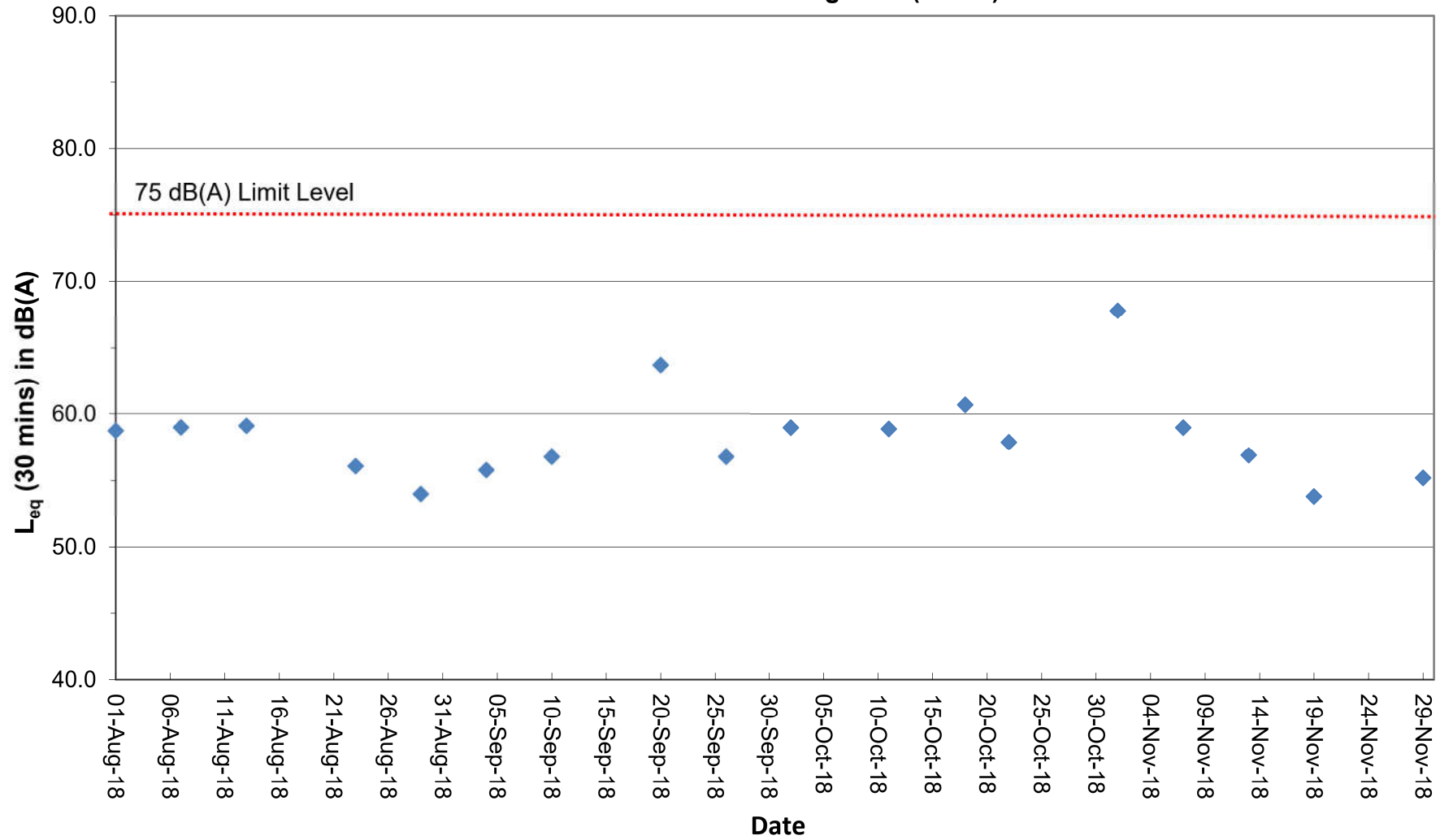
Noise Monitoring Data

Project	Works	Date (yyyy-mm-dd)	Station	Start Time	Wind Speed, m/s	1st set 5mins		2nd set 5mins		3rd set 5mins		4th set 5mins		5th set 5mins		6th set 5mins		Overall (30mins)*	Unit	
						Leq:	L10:	L90:	Leq:	L10:	L90:	Leq:	L10:	L90:	Leq:	L10:	L90:			Leq:
HKLR	HY/2011/03	2018-09-04	NMS5	09:17	<5	Leq:	51.3	Leq:	54.8	Leq:	51.4	Leq:	52.3	Leq:	53.5	Leq:	52.1	Leq:	55.8	dB(A)
						L10:	52.5	L10:	58.0	L10:	53.0	L10:	54.5	L10:	56.0	L10:	54.0	L10:	58.1	
						L90:	49.0	L90:	49.5	L90:	49.0	L90:	49.5	L90:	49.0	L90:	50.0	L90:	52.3	
HKLR	HY/2011/03	2018-09-10	NMS5	09:15	<5	Leq:	56.2	Leq:	53.4	Leq:	52.2	Leq:	54.5	Leq:	52.7	Leq:	52.6	Leq:	56.8	dB(A)
						L10:	60.0	L10:	57.0	L10:	54.5	L10:	58.0	L10:	55.5	L10:	54.0	L10:	60.0	
						L90:	48.0	L90:	48.5	L90:	49.5	L90:	49.5	L90:	48.0	L90:	48.0	L90:	51.6	
HKLR	HY/2011/03	2018-09-20	NMS5	16:12	<5	Leq:	62.1	Leq:	61.6	Leq:	60.5	Leq:	60.9	Leq:	58.3	Leq:	59.8	Leq:	63.7	dB(A)
						L10:	63.0	L10:	60.5	L10:	61.5	L10:	61.5	L10:	58.5	L10:	60.5	L10:	64.1	
						L90:	57.0	L90:	57.0	L90:	57.0	L90:	56.0	L90:	57.0	L90:	57.0	L90:	59.8	
HKLR	HY/2011/03	2018-09-26	NMS5	09:23	<5	Leq:	52.9	Leq:	55.3	Leq:	54.6	Leq:	51.9	Leq:	52.5	Leq:	54.3	Leq:	56.8	dB(A)
						L10:	55.5	L10:	58.0	L10:	57.5	L10:	54.0	L10:	54.0	L10:	56.5	L10:	59.2	
						L90:	49.5	L90:	51.0	L90:	51.0	L90:	49.5	L90:	50.0	L90:	50.5	L90:	53.3	
HKLR	HY/2011/03	2018-10-02	NMS5	09:18	<5	Leq:	54.1	Leq:	54.9	Leq:	56.0	Leq:	56.2	Leq:	56.5	Leq:	57.5	Leq:	59.0	dB(A)
						L10:	57.0	L10:	57.0	L10:	58.0	L10:	58.5	L10:	59.5	L10:	60.5	L10:	61.6	
						L90:	49.5	L90:	51.0	L90:	52.0	L90:	53.0	L90:	52.0	L90:	52.0	L90:	54.7	
HKLR	HY/2011/03	2018-10-11	NMS5	09:06	<5	Leq:	56.1	Leq:	53.8	Leq:	58.9	Leq:	53.6	Leq:	55.3	Leq:	55.2	Leq:	58.9	dB(A)
						L10:	59.0	L10:	56.5	L10:	62.5	L10:	55.5	L10:	57.5	L10:	57.0	L10:	61.7	
						L90:	50.5	L90:	49.5	L90:	51.0	L90:	50.5	L90:	51.5	L90:	52.0	L90:	53.9	
HKLR	HY/2011/03	2018-10-18	NMS5	15:26	<5	Leq:	57.9	Leq:	55.8	Leq:	57.2	Leq:	56.8	Leq:	59.3	Leq:	58.3	Leq:	60.7	dB(A)
						L10:	60.5	L10:	56.5	L10:	59.5	L10:	59.0	L10:	62.0	L10:	60.0	L10:	62.9	
						L90:	55.5	L90:	54.5	L90:	55.0	L90:	54.0	L90:	55.5	L90:	55.0	L90:	57.9	
HKLR	HY/2011/03	2018-11-01	NMS5	09:17	<5	Leq:	59.0	Leq:	52.6	Leq:	52.2	Leq:	56.3	Leq:	51.5	Leq:	51.2	Leq:	67.8	dB(A)
						L10:	58.0	L10:	54.0	L10:	53.5	L10:	60.0	L10:	53.0	L10:	52.5	L10:	69.7	
						L90:	49.0	L90:	50.0	L90:	50.5	L90:	50.0	L90:	49.5	L90:	49.5	L90:	62.8	
HKLR	HY/2011/03	2018-11-07	NMS5	09:09	<5	Leq:	59.0	Leq:	52.6	Leq:	52.2	Leq:	56.3	Leq:	51.5	Leq:	51.2	Leq:	59.0	dB(A)
						L10:	58.0	L10:	54.0	L10:	53.5	L10:	60.0	L10:	53.0	L10:	52.5	L10:	61.6	
						L90:	49.0	L90:	50.0	L90:	50.5	L90:	50.0	L90:	49.5	L90:	49.5	L90:	54.7	
HKLR	HY/2011/03	2018-11-13	NMS5	09:10	<5	Leq:	59.0	Leq:	52.6	Leq:	52.2	Leq:	56.3	Leq:	51.5	Leq:	51.2	Leq:	56.9	dB(A)
						L10:	58.0	L10:	54.0	L10:	53.5	L10:	60.0	L10:	53.0	L10:	52.5	L10:	60.0	
						L90:	49.0	L90:	50.0	L90:	50.5	L90:	50.0	L90:	49.5	L90:	49.5	L90:	51.7	
HKLR	HY/2011/03	2018-11-19	NMS5	09:07	<5	Leq:	59.0	Leq:	52.6	Leq:	52.2	Leq:	56.3	Leq:	51.5	Leq:	51.2	Leq:	53.8	dB(A)
						L10:	58.0	L10:	54.0	L10:	53.5	L10:	60.0	L10:	53.0	L10:	52.5	L10:	56.4	
						L90:	49.0	L90:	50.0	L90:	50.5	L90:	50.0	L90:	49.5	L90:	49.5	L90:	50.2	
HKLR	HY/2011/03	2018-11-29	NMS5	09:08	<5	Leq:	59.0	Leq:	52.6	Leq:	52.2	Leq:	56.3	Leq:	51.5	Leq:	51.2	Leq:	55.2	dB(A)
						L10:	58.0	L10:	54.0	L10:	53.5	L10:	60.0	L10:	53.0	L10:	52.5	L10:	58.2	
						L90:	49.0	L90:	50.0	L90:	50.5	L90:	50.0	L90:	49.5	L90:	49.5	L90:	50.9	

Remark:

(1)* A facade correction of +3 dB(A) was applied to the measured noise level.

Continuous Noise Monitoring Data (NMS5)



Remark:

(1) A facade correction of +3 dB(A) was applied to the measured noise level.