

Noise Monitoring Data

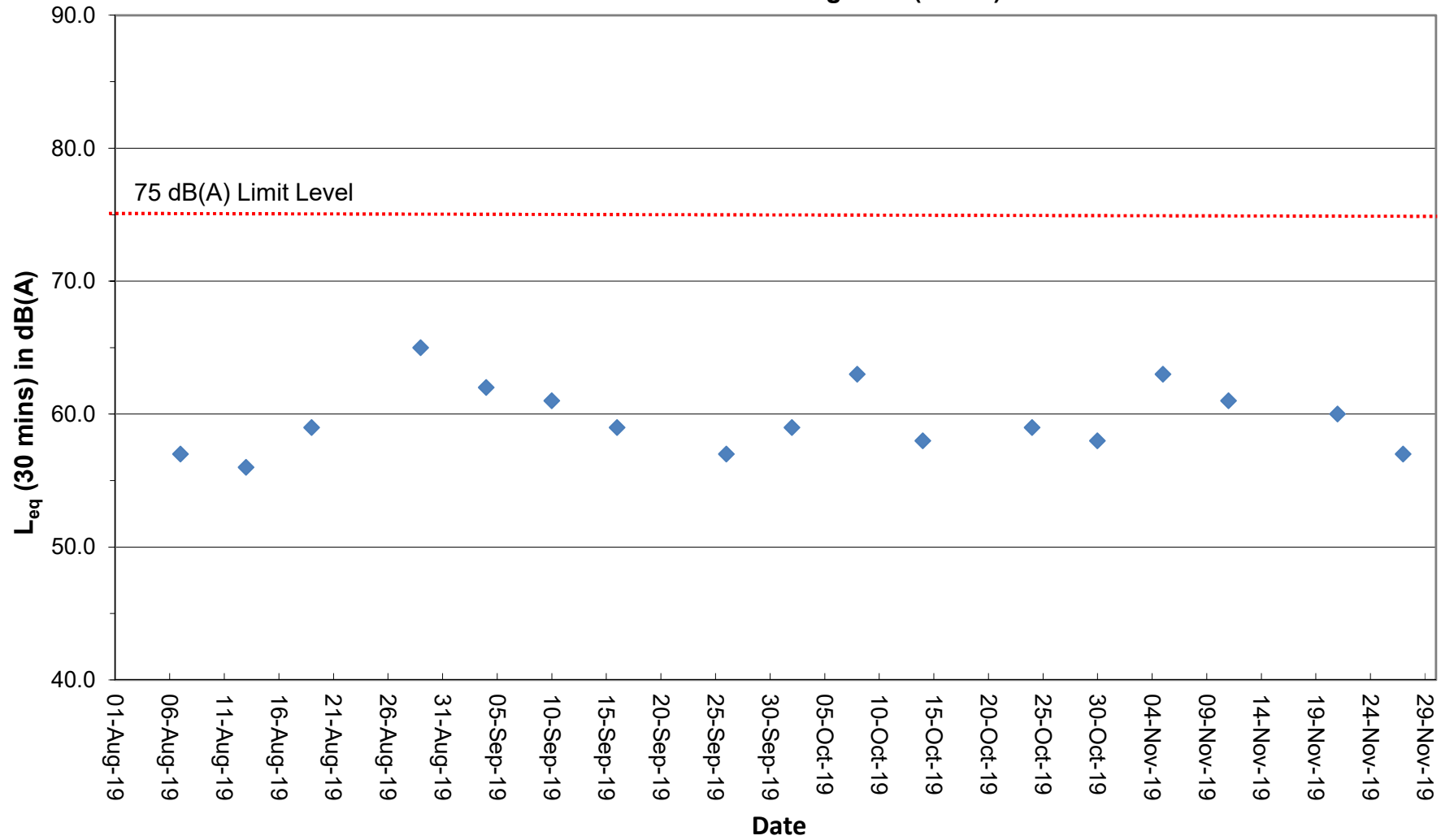
Project	Works	Date (yyyy-mm-dd)	Station	Start Time	Wind Speed, m/s	1st set 5mins	2nd set 5mins	3rd set 5mins	4th set 5mins	5th set 5mins	6th set 5mins	Overall (30mins)*	Unit
						Leq:	L10:	L90:	Leq:	L10:	L90:		
HKLR	HY/2011/03	2019-09-04	NMS5	14:25	<5	Leq: 59.1	Leq: 60.4	Leq: 59.2	Leq: 59.0	Leq: 58.4	Leq: 59.4	Leq: 62	dB(A)
						L10: 60.5	L10: 62.0	L10: 60.0	L10: 60.5	L10: 60.0	L10: 61.5	L10: 64	
						L90: 56.5	L90: 58.0	L90: 58.0	L90: 57.5	L90: 56.5	L90: 57.0	L90: 60	
HKLR	HY/2011/03	2019-09-10	NMS5	13:36	<5	Leq: 59.4	Leq: 59.9	Leq: 57.1	Leq: 56.9	Leq: 57.6	Leq: 57.0	Leq: 61	dB(A)
						L10: 60.5	L10: 59.5	L10: 57.0	L10: 57.0	L10: 58.5	L10: 57.5	L10: 62	
						L90: 56.5	L90: 56.0	L90: 56.0	L90: 56.5	L90: 56.5	L90: 56.0	L90: 59	
HKLR	HY/2011/03	2019-09-16	NMS5	09:07	<5	Leq: 56.9	Leq: 58.8	Leq: 55.7	Leq: 55.4	Leq: 55.1	Leq: 54.3	Leq: 59	dB(A)
						L10: 59.0	L10: 61.5	L10: 58.0	L10: 58.0	L10: 57.0	L10: 56.0	L10: 62	
						L90: 51.0	L90: 51.5	L90: 51.5	L90: 51.0	L90: 52.0	L90: 51.5	L90: 54	
HKLR	HY/2011/03	2019-09-26	NMS5	09:20	<5	Leq: 54.7	Leq: 54.0	Leq: 54.4	Leq: 53.0	Leq: 53.3	Leq: 52.5	Leq: 57	dB(A)
						L10: 57.5	L10: 57.0	L10: 57.5	L10: 55.0	L10: 55.0	L10: 55.5	L10: 59	
						L90: 50.0	L90: 50.0	L90: 50.0	L90: 50.0	L90: 50.0	L90: 49.0	L90: 53	
HKLR	HY/2011/03	2019-10-02	NMS5	09:19	<5	Leq: 52.4	Leq: 53.6	Leq: 52.0	Leq: 52.9	Leq: 60.9	Leq: 51.8	Leq: 59	dB(A)
						L10: 53.0	L10: 57.0	L10: 53.5	L10: 55.5	L10: 60.0	L10: 53.5	L10: 59	
						L90: 49.5	L90: 49.0	L90: 49.5	L90: 49.5	L90: 50.0	L90: 49.5	L90: 53	
HKLR	HY/2011/03	2019-10-08	NMS5	09:40	<5	Leq: 54.8	Leq: 52.2	Leq: 56.3	Leq: 61.5	Leq: 63.3	Leq: 60.5	Leq: 63	dB(A)
						L10: 57.5	L10: 54.5	L10: 59.5	L10: 63.5	L10: 60.0	L10: 62.5	L10: 64	
						L90: 50.5	L90: 49.0	L90: 49.5	L90: 62.0	L90: 53.0	L90: 54.0	L90: 59	
HKLR	HY/2011/03	2019-10-14	NMS5	09:15	<5	Leq: 56.0	Leq: 53.6	Leq: 54.5	Leq: 53.0	Leq: 53.7	Leq: 57.1	Leq: 58	dB(A)
						L10: 60.0	L10: 56.0	L10: 57.0	L10: 56.0	L10: 57.0	L10: 60.5	L10: 61	
						L90: 49.0	L90: 49.0	L90: 49.5	L90: 48.5	L90: 48.5	L90: 49.5	L90: 52	
HKLR	HY/2011/03	2019-10-24	NMS5	09:15	<5	Leq: 55.4	Leq: 55.9	Leq: 55.0	Leq: 55.5	Leq: 55.9	Leq: 56.0	Leq: 59	dB(A)
						L10: 57.0	L10: 58.0	L10: 56.0	L10: 57.0	L10: 58.0	L10: 58.5	L10: 60	
						L90: 53.0	L90: 52.5	L90: 53.0	L90: 53.0	L90: 52.5	L90: 52.5	L90: 56	
HKLR	HY/2011/03	2019-10-30	NMS5	10:36	<5	Leq: 56.6	Leq: 54.6	Leq: 54.1	Leq: 54.2	Leq: 56.3	Leq: 54.7	Leq: 58	dB(A)
						L10: 58.5	L10: 57.0	L10: 57.0	L10: 57.0	L10: 59.5	L10: 57.0	L10: 61	
						L90: 54.0	L90: 51.0	L90: 50.5	L90: 50.5	L90: 51.0	L90: 51.5	L90: 55	
HKLR	HY/2011/03	2019-11-05	NMS5	10:45	<5	Leq: 54.5	Leq: 59.5	Leq: 55.0	Leq: 62.4	Leq: 62.8	Leq: 57.7	Leq: 63	dB(A)
						L10: 56.5	L10: 60.5	L10: 58.0	L10: 68.0	L10: 67.0	L10: 60.0	L10: 67	
						L90: 52.0	L90: 51.0	L90: 51.0	L90: 54.0	L90: 52.5	L90: 52.5	L90: 55	
HKLR	HY/2011/03	2019-11-11	NMS5	09:49	<5	Leq: 54.8	Leq: 55.3	Leq: 61.0	Leq: 59.8	Leq: 54.9	Leq: 54.1	Leq: 61	dB(A)
						L10: 56.5	L10: 56.5	L10: 62.0	L10: 57.0	L10: 56.5	L10: 55.5	L10: 61	
						L90: 51.5	L90: 52.0	L90: 52.5	L90: 53.0	L90: 51.5	L90: 51.0	L90: 55	
HKLR	HY/2011/03	2019-11-21	NMS5	10:30	<5	Leq: 56.5	Leq: 57.4	Leq: 56.5	Leq: 56.7	Leq: 57.0	Leq: 57.0	Leq: 60	dB(A)
						L10: 58.5	L10: 60.5	L10: 58.0	L10: 59.0	L10: 60.0	L10: 59.0	L10: 62	
						L90: 53.5	L90: 52.5	L90: 53.0	L90: 52.5	L90: 53.0	L90: 53.5	L90: 56	
HKLR	HY/2011/03	2019-11-27	NMS5	09:38	<5	Leq: 54.2	Leq: 51.6	Leq: 54.0	Leq: 53.2	Leq: 54.3	Leq: 53.4	Leq: 57	dB(A)
						L10: 57.0	L10: 53.5	L10: 56.5	L10: 56.0	L10: 57.0	L10: 55.5	L10: 59	
						L90: 50.0	L90: 48.5	L90: 49.5	L90: 48.5	L90: 50.0	L90: 50.0	L90: 52	

Remark:

(1)* A facade correction of +3 dB(A) was applied to the measured noise level.

Graphical Plot of Noise Levels at NMS5

Continuous Noise Monitoring Data (NMS5)



Remark:

(1) A facade correction of +3 dB(A) was applied to the measured noise level.