

Noise Monitoring Data

| Project | Works | Date (yyyy-mm-dd) | Station | Start Time | Wind Speed, m/s | 1st set 5mins | 2nd set 5mins | 3rd set 5mins | 4th set 5mins | 5th set 5mins | 6th set 5mins | Overall (30mins)* | Unit |
|---------|------------|-------------------|---------|------------|-----------------|---------------|---------------|---------------|---------------|---------------|---------------|-------------------|-------|
| HKLR | HY/2011/03 | 2020-06-02 | NMS5 | 10:35 | <5 | Leq: 52.0 | Leq: 54.7 | Leq: 57.2 | Leq: 56.2 | Leq: 55.9 | Leq: 53.9 | Leq: 58 | dB(A) |
| | | | | | | L10: 53.0 | L10: 57.5 | L10: 60.0 | L10: 57.5 | L10: 58.0 | L10: 54.0 | L10: 60 | |
| | | | | | | L90: 48.0 | L90: 48.0 | L90: 49.0 | L90: 49.5 | L90: 49.5 | L90: 50.5 | L90: 52 | |
| HKLR | HY/2011/03 | 2020-06-08 | NMS5 | 11:10 | <5 | Leq: 55.8 | Leq: 53.8 | Leq: 56.5 | Leq: 56.2 | Leq: 59.2 | Leq: 55.4 | Leq: 59 | dB(A) |
| | | | | | | L10: 57.0 | L10: 56.0 | L10: 57.4 | L10: 58.5 | L10: 63.0 | L10: 57.5 | L10: 62 | |
| | | | | | | L90: 52.0 | L90: 51.5 | L90: 50.0 | L90: 53.0 | L90: 54.0 | L90: 52.5 | L90: 55 | |
| HKLR | HY/2011/03 | 2020-06-18 | NMS5 | 10:44 | <5 | Leq: 56.7 | Leq: 56.5 | Leq: 56.4 | Leq: 56.1 | Leq: 55.8 | Leq: 56.6 | Leq: 59 | dB(A) |
| | | | | | | L10: 57.5 | L10: 57.0 | L10: 56.5 | L10: 56.0 | L10: 56.0 | L10: 57.5 | L10: 60 | |
| | | | | | | L90: 55.0 | L90: 55.5 | L90: 55.5 | L90: 55.5 | L90: 55.0 | L90: 55.0 | L90: 58 | |
| HKLR | HY/2011/03 | 2020-06-24 | NMS5 | 10:37 | <5 | Leq: 55.8 | Leq: 56.3 | Leq: 56.1 | Leq: 55.9 | Leq: 56.4 | Leq: 55.6 | Leq: 59 | dB(A) |
| | | | | | | L10: 56.0 | L10: 57.0 | L10: 56.5 | L10: 57.0 | L10: 56.0 | L10: 56.0 | L10: 59 | |
| | | | | | | L90: 55.0 | L90: 55.0 | L90: 55.0 | L90: 55.0 | L90: 55.0 | L90: 55.0 | L90: 58 | |
| HKLR | HY/2011/03 | 2020-06-30 | NMS5 | 10:14 | <5 | Leq: 52.6 | Leq: 50.6 | Leq: 51.0 | Leq: 49.3 | Leq: 50.9 | Leq: 50.4 | Leq: 54 | dB(A) |
| | | | | | | L10: 52.5 | L10: 51.5 | L10: 52.0 | L10: 50.0 | L10: 51.5 | L10: 51.5 | L10: 55 | |
| | | | | | | L90: 48.5 | L90: 49.0 | L90: 48.0 | L90: 48.0 | L90: 48.5 | L90: 49.5 | L90: 52 | |

(1)* A facade correction of +3 dB(A) was applied to the measured noise level.

Noise Monitoring Data

| Project | Works | Date (yyyy-mm-dd) | Station | Start Time | Wind Speed, m/s | 1st set 5mins | | | 2nd set 5mins | | | 3rd set 5mins | | | 4th set 5mins | | | 5th set 5mins | | | 6th set 5mins | | | Overall (30mins)* | Unit |
|---------|------------|-------------------|---------|------------|-----------------|---------------|------|------|---------------|------|------|---------------|------|------|---------------|------|------|---------------|------|-------|---------------|------|------|-------------------|------|
| | | | | | | Leq: | L10: | L90: | Leq: | L10: | L90: | Leq: | L10: | L90: | Leq: | L10: | L90: | Leq: | L10: | L90: | Leq: | L10: | L90: | | |
| HKLR | HY/2011/03 | 2020-07-06 | NMS5 | 10:18 | <5 | Leq: | 55.4 | Leq: | 51.5 | Leq: | 54.3 | Leq: | 58.1 | Leq: | 51.8 | Leq: | 52.7 | Leq: | 58 | dB(A) | | | | | |
| | | | | | | L10: | 58.0 | L10: | 53.5 | L10: | 52.0 | L10: | 62.5 | L10: | 52.5 | L10: | 53.5 | L10: | 60 | | | | | | |
| | | | | | | L90: | 48.5 | L90: | 49.0 | L90: | 49.0 | L90: | 49.5 | L90: | 50.0 | L90: | 50.5 | L90: | 52 | | | | | | |
| HKLR | HY/2011/03 | 2020-07-16 | NMS5 | 10:17 | <5 | Leq: | 56.4 | Leq: | 56.7 | Leq: | 57.7 | Leq: | 56.7 | Leq: | 57.3 | Leq: | 56.9 | Leq: | 60 | dB(A) | | | | | |
| | | | | | | L10: | 58.0 | L10: | 57.0 | L10: | 58.5 | L10: | 57.0 | L10: | 58.5 | L10: | 57.5 | L10: | 61 | | | | | | |
| | | | | | | L90: | 55.5 | L90: | 56.0 | L90: | 56.5 | L90: | 56.0 | L90: | 56.0 | L90: | 56.0 | L90: | 59 | | | | | | |
| HKLR | HY/2011/03 | 2020-07-22 | NMS5 | 13:08 | <5 | Leq: | 70.5 | Leq: | 70.4 | Leq: | 70.2 | Leq: | 70.2 | Leq: | 69.2 | Leq: | 70.1 | Leq: | 73 | dB(A) | | | | | |
| | | | | | | L10: | 71.5 | L10: | 71.5 | L10: | 71.0 | L10: | 71.0 | L10: | 69.5 | L10: | 71.0 | L10: | 74 | | | | | | |
| | | | | | | L90: | 69.5 | L90: | 69.0 | L90: | 69.0 | L90: | 69.0 | L90: | 68.5 | L90: | 69.0 | L90: | 72 | | | | | | |
| HKLR | HY/2011/03 | 2020-07-28 | NMS5 | 10:08 | <5 | Leq: | 51.5 | Leq: | 52.4 | Leq: | 51.1 | Leq: | 52.0 | Leq: | 54.7 | Leq: | 57.1 | Leq: | 57 | dB(A) | | | | | |
| | | | | | | L10: | 51.5 | L10: | 51.0 | L10: | 52.5 | L10: | 54.0 | L10: | 57.5 | L10: | 60.0 | L10: | 59 | | | | | | |
| | | | | | | L90: | 49.0 | L90: | 49.0 | L90: | 49.0 | L90: | 49.0 | L90: | 50.5 | L90: | 51.0 | L90: | 53 | | | | | | |

(1)* A facade correction of +3 dB(A) was applied to the measured noise level.

Noise Monitoring Data

| Project | Works | Date (yyyy-mm-dd) | Station | Start Time | Wind Speed, m/s | 1st set 5mins | | 2nd set 5mins | | 3rd set 5mins | | 4th set 5mins | | 5th set 5mins | | 6th set 5mins | | Overall (30mins)* | Unit | |
|---------|------------|-------------------|---------|------------|-----------------|---------------|------|---------------|------|---------------|------|---------------|------|---------------|------|---------------|------|-------------------|------|-------|
| | | | | | | Leq: | L10: | L90: | Leq: | L10: | L90: | Leq: | L10: | L90: | Leq: | L10: | L90: | | | Leq: |
| HKLR | HY/2011/03 | 2020-08-03 | NMS5 | 10:23 | <5 | Leq: | 55.3 | Leq: | 56.4 | Leq: | 54.6 | Leq: | 54.2 | Leq: | 54.4 | Leq: | 57.4 | Leq: | 59 | dB(A) |
| | | | | | | L10: | 57.0 | L10: | 59.0 | L10: | 56.0 | L10: | 55.5 | L10: | 55.5 | L10: | 60.5 | L10: | 61 | |
| | | | | | | L90: | 52.0 | L90: | 53.0 | L90: | 52.5 | L90: | 52.0 | L90: | 52.0 | L90: | 53.0 | L90: | 55 | |
| HKLR | HY/2011/03 | 2020-08-13 | NMS5 | 10:04 | <5 | Leq: | 65.1 | Leq: | 64.9 | Leq: | 65.1 | Leq: | 65.0 | Leq: | 64.1 | Leq: | 70.3 | Leq: | 69 | dB(A) |
| | | | | | | L10: | 65.5 | L10: | 65.5 | L10: | 67.0 | L10: | 65.0 | L10: | 65.0 | L10: | 74.0 | L10: | 72 | |
| | | | | | | L90: | 64.5 | L90: | 63.5 | L90: | 63.0 | L90: | 63.5 | L90: | 62.0 | L90: | 63.0 | L90: | 66 | |
| HKLR | HY/2011/03 | 2020-08-20 | NMS5 | 09:19 | <5 | Leq: | 64.8 | Leq: | 66.9 | Leq: | 66.0 | Leq: | 65.4 | Leq: | 64.8 | Leq: | 64.0 | Leq: | 68 | dB(A) |
| | | | | | | L10: | 66.0 | L10: | 68.0 | L10: | 66.5 | L10: | 65.5 | L10: | 65.0 | L10: | 64.5 | L10: | 69 | |
| | | | | | | L90: | 63.5 | L90: | 66.0 | L90: | 65.0 | L90: | 64.5 | L90: | 63.5 | L90: | 63.0 | L90: | 67 | |
| HKLR | HY/2011/03 | 2020-08-25 | NMS5 | 10:12 | <5 | Leq: | 57.8 | Leq: | 61.1 | Leq: | 60.7 | Leq: | 59.2 | Leq: | 59.7 | Leq: | 58.7 | Leq: | 63 | dB(A) |
| | | | | | | L10: | 58.5 | L10: | 62.5 | L10: | 62.5 | L10: | 60.5 | L10: | 60.5 | L10: | 60.0 | L10: | 64 | |
| | | | | | | L90: | 53.5 | L90: | 57.0 | L90: | 57.5 | L90: | 57.0 | L90: | 57.0 | L90: | 53.5 | L90: | 59 | |
| HKLR | HY/2011/03 | 2020-08-31 | NMS5 | 10:13 | <5 | Leq: | 58.6 | Leq: | 58.6 | Leq: | 58.4 | Leq: | 56.2 | Leq: | 57.0 | Leq: | 54.7 | Leq: | 60 | dB(A) |
| | | | | | | L10: | 59.5 | L10: | 60.0 | L10: | 59.5 | L10: | 58.0 | L10: | 59.0 | L10: | 56.5 | L10: | 62 | |
| | | | | | | L90: | 57.5 | L90: | 57.0 | L90: | 56.5 | L90: | 54.5 | L90: | 55.0 | L90: | 52.0 | L90: | 59 | |

Remarks:

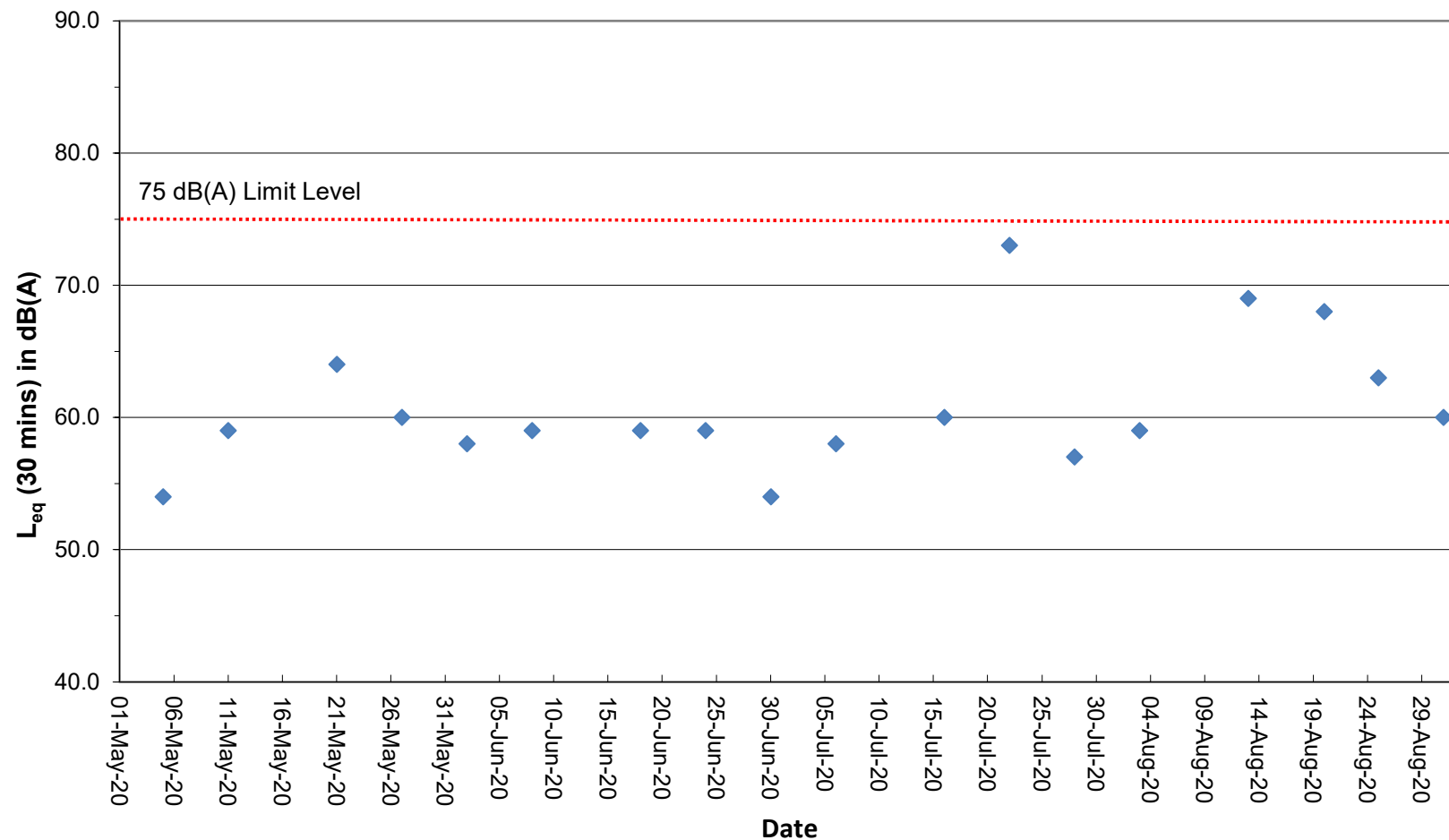
(1)* A facade correction of +3 dB(A) was applied to the measured noise level.

(2) Due to adverse weather condition on 19 August 2020 (Tropical Cyclone Warning Signal No.3 or above was hoisted by HKO), noise monitoring at NMS5 - Ma Wan Chung Village was rescheduled to 20 August 2020.

Noise Monitoring Data

Graphical Plot of Noise Levels at NMS5

Continuous Noise Monitoring Data (NMS5)



Remarks:

- (1) A facade correction of +3 dB(A) was applied to the measured noise level.
- (2) Due to adverse weather condition on 19 August 2020 (Tropical Cyclone Warning Signal No.3 or above was hoisted by HKO), noise monitoring at NMS5 - Ma Wan Chung Village was rescheduled to 20 August 2020.