

Noise Monitoring Data

Project	Works	Date (yyyy-mm-dd)	Station	Start Time	Wind Speed, m/s	1st set 5mins		2nd set 5mins		3rd set 5mins		4th set 5mins		5th set 5mins		6th set 5mins		Overall (30mins)*	Unit	
HKLR	HY/2011/03	2021-12-01	NMS5	9:56	<5	Leq:	52.2	Leq:	54.5	Leq:	53.4	Leq:	56.4	Leq:	54.8	Leq:	53.1	Leq:	57	dB(A)
						L10:	54.0	L10:	57.0	L10:	55.0	L10:	59.0	L10:	56.0	L10:	55.5	L10:	59	
						L90:	50.0	L90:	50.0	L90:	51.5	L90:	51.0	L90:	50.5	L90:	49.5	L90:	53	
HKLR	HY/2011/03	2021-12-07	NMS5	9:34	<5	Leq:	56.8	Leq:	57.4	Leq:	54.7	Leq:	55.5	Leq:	55.5	Leq:	56.2	Leq:	59	dB(A)
						L10:	58.5	L10:	59.0	L10:	56.5	L10:	57.5	L10:	58.0	L10:	59.5	L10:	61	
						L90:	52.5	L90:	51.5	L90:	50.5	L90:	50.5	L90:	49.0	L90:	49.5	L90:	54	
HKLR	HY/2011/03	2021-12-13	NMS5	13:12	<5	Leq:	53.5	Leq:	56.6	Leq:	58.2	Leq:	58.3	Leq:	53.2	Leq:	54.1	Leq:	59	dB(A)
						L10:	55.0	L10:	60.0	L10:	59.0	L10:	60.0	L10:	53.5	L10:	55.0	L10:	61	
						L90:	49.0	L90:	49.5	L90:	55.5	L90:	52.0	L90:	53.0	L90:	53.0	L90:	56	
HKLR	HY/2011/03	2021-12-23	NMS5	8:36	<5	Leq:	61.3	Leq:	58.7	Leq:	58.0	Leq:	57.7	Leq:	57.4	Leq:	56.0	Leq:	62	dB(A)
						L10:	64.5	L10:	60.5	L10:	59.5	L10:	59.5	L10:	60.0	L10:	57.5	L10:	64	
						L90:	57.5	L90:	56.0	L90:	56.0	L90:	55.0	L90:	54.5	L90:	54.0	L90:	59	
HKLR	HY/2011/03	2021-12-29	NMS5	9:00	<5	Leq:	53.7	Leq:	54.1	Leq:	55.2	Leq:	58.2	Leq:	60.4	Leq:	60.1	Leq:	61	dB(A)
						L10:	56.0	L10:	55.5	L10:	57.5	L10:	58.0	L10:	60.0	L10:	59.5	L10:	61	
						L90:	49.5	L90:	51.0	L90:	51.5	L90:	52.5	L90:	54.0	L90:	53.5	L90:	55	

Remark:

(1)\* A facade correction of +3 dB(A) was applied to the measured noise level.

Noise Monitoring Data

Project	Works	Date (yyyy-mm-dd)	Station	Start Time	Wind Speed, m/s	1st set 5mins		2nd set 5mins		3rd set 5mins		4th set 5mins		5th set 5mins		6th set 5mins		Overall (30mins)*		Unit
						Leq:	L10:	Leq:	L10:	Leq:	L10:	Leq:	L10:	Leq:	L10:	Leq:	L10:	Leq:	L10:	
HKLR	HY/2011/03	2022-01-04	NMS5	9:41	<5	Leq:	55.2	Leq:	57.1	Leq:	54.9	Leq:	53.5	Leq:	56.0	Leq:	53.7	Leq:	58	dB(A)
						L10:	57.5	L10:	60.0	L10:	57.0	L10:	56.5	L10:	59.5	L10:	56.5	L10:	61	
						L90:	51.0	L90:	52.0	L90:	50.5	L90:	49.5	L90:	49.5	L90:	49.5	L90:	53	
HKLR	HY/2011/03	2022-01-10	NMS5	10:16	<5	Leq:	50.5	Leq:	50.0	Leq:	53.2	Leq:	50.5	Leq:	50.7	Leq:	53.9	Leq:	55	dB(A)
						L10:	51.5	L10:	51.5	L10:	57.0	L10:	52.0	L10:	52.0	L10:	56.5	L10:	57	
						L90:	49.0	L90:	48.0	L90:	48.5	L90:	48.0	L90:	49.0	L90:	49.0	L90:	52	
HKLR	HY/2011/03	2022-01-19	NMS5	10:14	<5	Leq:	50.8	Leq:	57.4	Leq:	50.5	Leq:	58.7	Leq:	57.0	Leq:	56.3	Leq:	59	dB(A)
						L10:	51.8	L10:	58.0	L10:	51.5	L10:	58.0	L10:	58.0	L10:	57.5	L10:	60	
						L90:	50.4	L90:	50.5	L90:	50.0	L90:	53.5	L90:	54.0	L90:	54.0	L90:	55	
HKLR	HY/2011/03	2022-01-25	NMS5	9:38	<5	Leq:	54.8	Leq:	52.3	Leq:	52.8	Leq:	51.6	Leq:	57.3	Leq:	51.7	Leq:	57	dB(A)
						L10:	58.5	L10:	54.0	L10:	54.5	L10:	52.5	L10:	61.0	L10:	53.5	L10:	60	
						L90:	49.5	L90:	49.5	L90:	50.0	L90:	49.5	L90:	50.0	L90:	49.0	L90:	53	
HKLR	HY/2011/03	2022-01-31	NMS5	9:16	<5	Leq:	50.3	Leq:	53.5	Leq:	51.8	Leq:	50.7	Leq:	53.6	Leq:	52.4	Leq:	55	dB(A)
						L10:	51.5	L10:	57.5	L10:	54.0	L10:	52.5	L10:	56.5	L10:	55.5	L10:	58	
						L90:	46.5	L90:	47.0	L90:	48.0	L90:	48.0	L90:	49.0	L90:	48.5	L90:	51	

Remark:

(1)\* A facade correction of +3 dB(A) was applied to the measured noise level.

Noise Monitoring Data

Project	Works	Date (yyyy-mm-dd)	Station	Start Time	Wind Speed, m/s	1st set 5mins		2nd set 5mins		3rd set 5mins		4th set 5mins		5th set 5mins		6th set 5mins		Overall (30mins)*		Unit
						Leq:	L10:	L90:	Leq:	L10:	L90:	Leq:	L10:	L90:	Leq:	L10:	L90:	Leq:	L10:	
HKLR	HY/2011/03	2022-02-11	NMS5	09:59	<5	Leq:	54.2	Leq:	54.6	Leq:	55.6	Leq:	55.9	Leq:	53.9	Leq:	54.4	Leq:	58	dB(A)
						L10:	55.5	L10:	55.5	L10:	56.5	L10:	56.5	L10:	55.0	L10:	55.5	L10:	59	
						L90:	51.5	L90:	52.0	L90:	51.5	L90:	51.0	L90:	51.5	L90:	52.0	L90:	55	
HKLR	HY/2011/03	2022-02-16	NMS5	09:07	<5	Leq:	54.1	Leq:	54.9	Leq:	53.6	Leq:	55.0	Leq:	54.2	Leq:	54.7	Leq:	57	dB(A)
						L10:	55.5	L10:	57.0	L10:	55.0	L10:	56.5	L10:	55.5	L10:	56.0	L10:	59	
						L90:	51.0	L90:	51.5	L90:	51.0	L90:	51.5	L90:	51.5	L90:	51.5	L90:	54	
HKLR	HY/2011/03	2022-02-24 (see Remark 2)	NMS5	13:33	<5	Leq:	57.2	Leq:	55.1	Leq:	56.3	Leq:	55.4	Leq:	58.2	Leq:	55.3	Leq:	59	dB(A)
						L10:	57.0	L10:	56.5	L10:	58.5	L10:	57.0	L10:	62.0	L10:	57.5	L10:	62	
						L90:	51.0	L90:	51.5	L90:	52.5	L90:	51.5	L90:	52.0	L90:	52.0	L90:	55	
HKLR	HY/2011/03	2022-02-28	NMS5	09:58	<5	Leq:	50.6	Leq:	50.9	Leq:	52.0	Leq:	52.5	Leq:	49.2	Leq:	51.0	Leq:	54	dB(A)
						L10:	52.0	L10:	53.0	L10:	54.0	L10:	55.0	L10:	49.5	L10:	53.0	L10:	56	
						L90:	47.0	L90:	48.0	L90:	48.5	L90:	47.5	L90:	46.5	L90:	48.0	L90:	51	

Remarks:

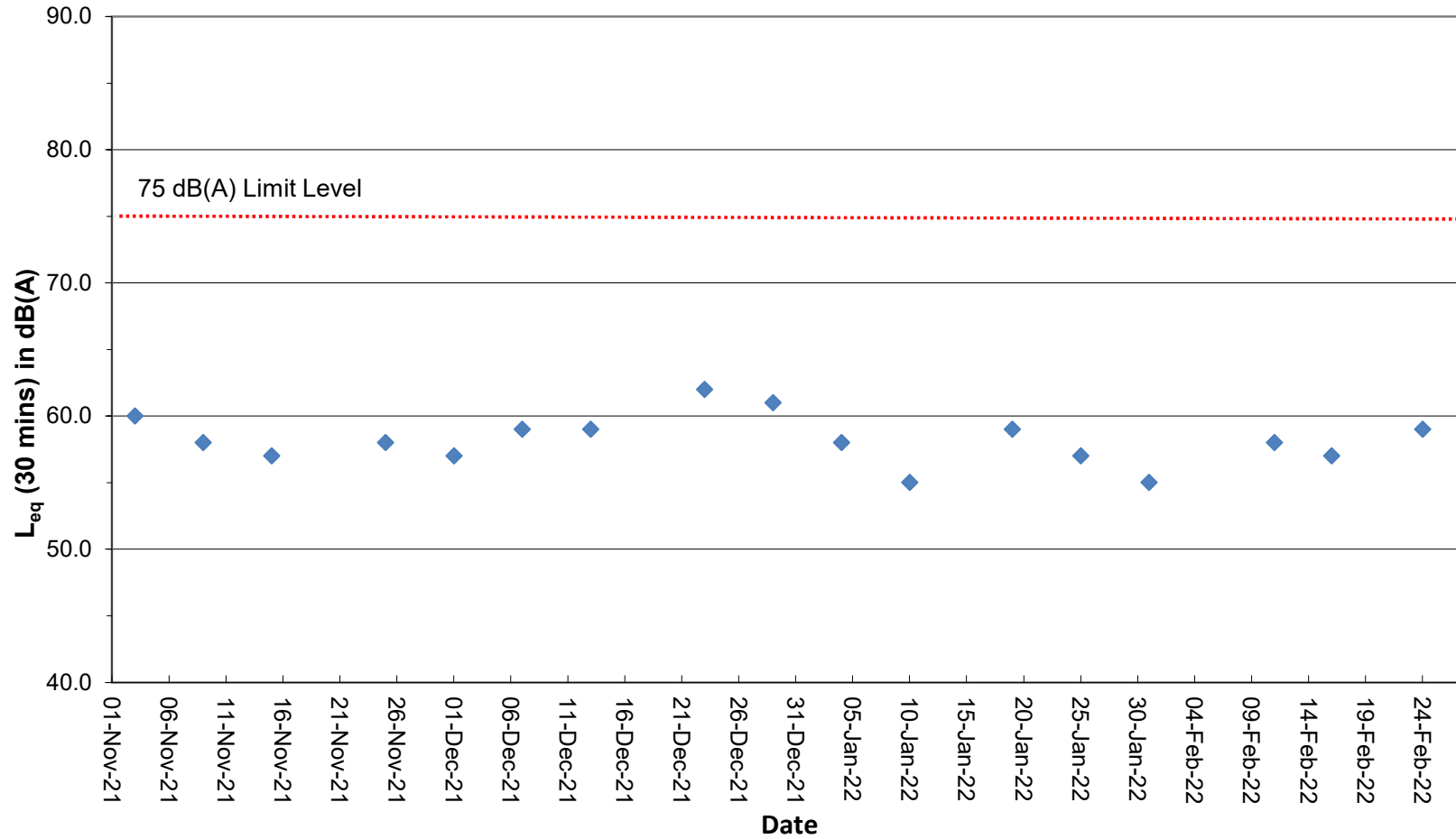
(1)\* A facade correction of +3 dB(A) was applied to the measured noise level.

(2) Due to bad weather condition on 22 February 2022, noise monitoring at NMS5 was rescheduled from 22 February 2022 to 24 February 2022.

# Noise Monitoring Data

## Graphical Plot of Noise Levels at NMS5

### Continuous Noise Monitoring Data (NMS5)



#### Remarks:

- (1) A facade correction of +3 dB(A) was applied to the measured noise level.
- (2) Due to bad weather condition on 22 February 2022, noise monitoring at NMS5 was rescheduled from 22 February 2022 to 24 February 2022.