

Noise Monitoring Data

Project	Works	Date (yyyy-mm-dd)	Station	Start Time	Wind Speed, m/s	1st set 5mins		2nd set 5mins		3rd set 5mins		4th set 5mins		5th set 5mins		6th set 5mins		Overall (30mins)*	Unit	
						Leq:	L10:	L90:	Leq:	L10:	L90:	Leq:	L10:	L90:	Leq:	L10:	L90:			Leq:
HKLR	HY/2011/03	2022-12-07	NMS5	10:50	<5	Leq:	57.2	Leq:	57.8	Leq:	58.0	Leq:	56.4	Leq:	56.8	Leq:	57.5	Leq:	60	dB(A)
						L10:	58.0	L10:	58.0	L10:	59.5	L10:	57.5	L10:	57.5	L10:	58.5	L10:	61	
						L90:	55.5	L90:	56.5	L90:	55.5	L90:	54.0	L90:	55.0	L90:	56.5	L90:	59	
HKLR	HY/2011/03	2022-12-13	NMS5	10:13	<5	Leq:	58.3	Leq:	56.2	Leq:	55.6	Leq:	54.2	Leq:	55.7	Leq:	57.7	Leq:	59	dB(A)
						L10:	61.0	L10:	57.5	L10:	57.0	L10:	56.0	L10:	57.5	L10:	60.0	L10:	62	
						L90:	53.5	L90:	53.0	L90:	52.5	L90:	51.5	L90:	52.0	L90:	54.0	L90:	56	
HKLR	HY/2011/03	2022-12-19	NMS5	09:26	<5	Leq:	55.3	Leq:	52.4	Leq:	53.4	Leq:	51.4	Leq:	54.0	Leq:	52.8	Leq:	56	dB(A)
						L10:	58.0	L10:	54.5	L10:	55.5	L10:	52.5	L10:	57.0	L10:	55.0	L10:	59	
						L90:	49.5	L90:	59.5	L90:	50.0	L90:	49.5	L90:	49.0	L90:	48.5	L90:	56	
HKLR	HY/2011/03	2022-12-29	NMS5	09:15	<5	Leq:	56.6	Leq:	53.5	Leq:	48.9	Leq:	51.0	Leq:	55.1	Leq:	56.3	Leq:	57	dB(A)
						L10:	60.0	L10:	56.0	L10:	49.8	L10:	54.0	L10:	59.0	L10:	58.5	L10:	60	
						L90:	50.0	L90:	49.0	L90:	47.0	L90:	47.5	L90:	49.5	L90:	48.5	L90:	52	

Remark:

(1)\* A facade correction of +3 dB(A) was applied to the measured noise level.

Noise Monitoring Data

Project	Works	Date (yyyy-mm-dd)	Station	Start Time	Wind Speed, m/s	1st set 5mins		2nd set 5mins		3rd set 5mins		4th set 5mins		5th set 5mins		6th set 5mins		Overall (30mins)*	Unit			
						Leq:	L10:	L90:	Leq:	L10:	L90:	Leq:	L10:	L90:	Leq:	L10:	L90:			Leq:	L10:	L90:
HKLR	HY/2011/03	2023-01-04	NMS5	10:02	<5	Leq:	64.2	Leq:	63.6	Leq:	63.0	Leq:	62.9	Leq:	61.5	Leq:	62.0	Leq:	66	dB(A)		
						L10:	66.5	L10:	66.0	L10:	65.0	L10:	65.0	L10:	64.0	L10:	61.0	L10:	61.0		L10:	68
						L90:	61.0	L90:	58.5	L90:	60.0	L90:	59.5	L90:	57.5	L90:	58.5	L90:	58.5		L90:	62
HKLR	HY/2011/03	2023-01-10	NMS5	09:10	<5	Leq:	55.0	Leq:	55.4	Leq:	57.4	Leq:	57.8	Leq:	54.2	Leq:	53.6	Leq:	59	dB(A)		
						L10:	56.7	L10:	57.0	L10:	59.5	L10:	61.0	L10:	56.3	L10:	56.0	L10:	61			
						L90:	52.0	L90:	52.0	L90:	54.0	L90:	52.0	L90:	51.5	L90:	50.5	L90:	55			
HKLR	HY/2011/03	2023-01-16	NMS5	09:37	<5	Leq:	59.8	Leq:	59.0	Leq:	59.1	Leq:	55.6	Leq:	55.4	Leq:	60.1	Leq:	62	dB(A)		
						L10:	63.5	L10:	58.5	L10:	60.5	L10:	58.0	L10:	52.0	L10:	62.0	L10:	63			
						L90:	53.0	L90:	51.5	L90:	51.5	L90:	51.8	L90:	53.5	L90:	51.0	L90:	55			
HKLR	HY/2011/03	2023-01-26	NMS5	09:02	<5	Leq:	59.4	Leq:	60.0	Leq:	59.8	Leq:	61.0	Leq:	59.4	Leq:	59.4	Leq:	63	dB(A)		
						L10:	61.5	L10:	60.0	L10:	61.0	L10:	62.5	L10:	61.5	L10:	61.0	L10:	64			
						L90:	57.5	L90:	57.5	L90:	57.5	L90:	58.0	L90:	58.0	L90:	57.5	L90:	61			
HKLR	HY/2011/03	2023-01-31	NMS5	09:00	<5	Leq:	57.3	Leq:	57.5	Leq:	55.5	Leq:	60.9	Leq:	60.9	Leq:	59.4	Leq:	62	dB(A)		
						L10:	59.0	L10:	56.5	L10:	57.5	L10:	53.5	L10:	63.0	L10:	61.0	L10:	62			
						L90:	50.0	L90:	50.0	L90:	50.0	L90:	49.5	L90:	56.0	L90:	56.0	L90:	56			

Remark:

(1)\* A facade correction of +3 dB(A) was applied to the measured noise level.

Noise Monitoring Data

Project	Works	Date (yyyy-mm-dd)	Station	Start Time	Wind Speed, m/s	1st set 5mins		2nd set 5mins		3rd set 5mins		4th set 5mins		5th set 5mins		6th set 5mins		Overall (30mins)*	Unit	
						Leq:	L10:	L90:	Leq:	L10:	L90:	Leq:	L10:	L90:	Leq:	L10:	L90:			Leq:
HKLR	HY/2011/03	2023-02-06	NMS5	09:00	<5	Leq:	57.0	Leq:	59.2	Leq:	60.0	Leq:	60.4	Leq:	61.4	Leq:	64.7	Leq:	64	dB(A)
						L10:	60.0	L10:	60.0	L10:	63.0	L10:	64.0	L10:	65.0	L10:	66.5	L10:	67	
						L90:	51.5	L90:	50.5	L90:	50.0	L90:	49.5	L90:	47.5	L90:	48.0	L90:	53	
HKLR	HY/2011/03	2023-02-16	NMS5	10:11	<5	Leq:	53.7	Leq:	54.9	Leq:	59.9	Leq:	53.6	Leq:	54.6	Leq:	55.8	Leq:	59	dB(A)
						L10:	54.5	L10:	57.0	L10:	63.5	L10:	54.5	L10:	57.0	L10:	59.0	L10:	62	
						L90:	52.0	L90:	51.5	L90:	51.5	L90:	51.5	L90:	51.0	L90:	51.0	L90:	54	
HKLR	HY/2011/03	2023-02-22	NMS5	09:22	<5	Leq:	59.2	Leq:	55.6	Leq:	55.9	Leq:	56.9	Leq:	56.6	Leq:	58.1	Leq:	60	dB(A)
						L10:	62.1	L10:	57.0	L10:	57.5	L10:	59.0	L10:	58.5	L10:	60.0	L10:	62	
						L90:	54.0	L90:	54.0	L90:	53.5	L90:	53.0	L90:	52.5	L90:	54.0	L90:	57	
HKLR	HY/2011/03	2023-02-28	NMS5	09:25	<5	Leq:	59.8	Leq:	59.0	Leq:	58.0	Leq:	55.6	Leq:	55.4	Leq:	60.1	Leq:	61	dB(A)
						L10:	62.5	L10:	58.5	L10:	60.5	L10:	58.0	L10:	52.0	L10:	62.0	L10:	63	
						L90:	58.0	L90:	50.0	L90:	51.5	L90:	51.5	L90:	53.5	L90:	51.0	L90:	57	

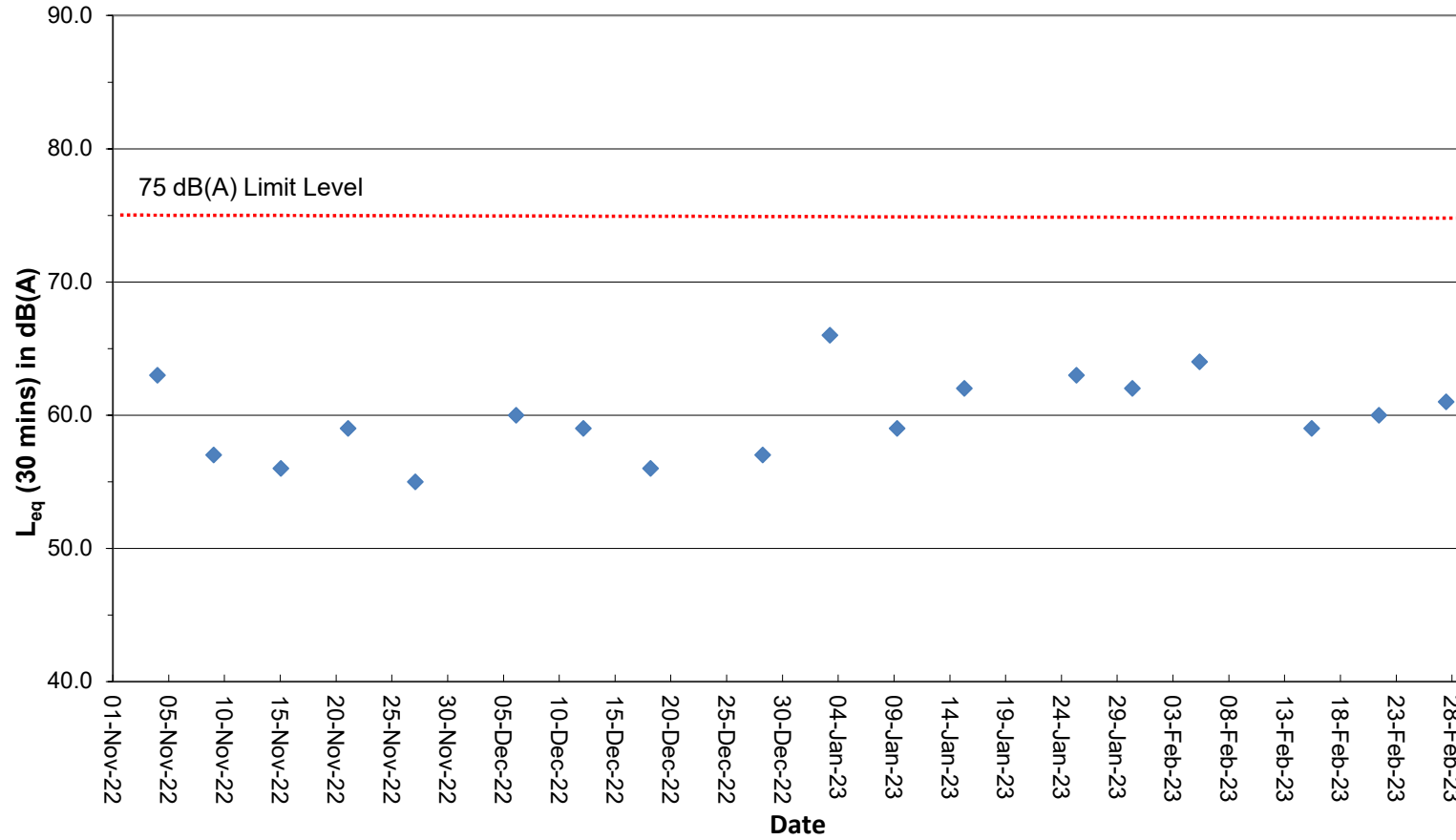
Remark:

(1)\* A facade correction of +3 dB(A) was applied to the measured noise level.

Noise Monitoring Data

Graphical Plot of Noise Levels at NMS5

Continuous Noise Monitoring Data (NMS5)



Remarks:

(1) A facade correction of +3 dB(A) was applied to the measured noise level.