

Noise Monitoring Data

Project	Works	Date (yyyy-mm-dd)	Station	Start Time	Wind Speed, m/s	1st set 5mins		2nd set 5mins		3rd set 5mins		4th set 5mins		5th set 5mins		6th set 5mins		Overall (30mins)*	Unit	
						Leq:	L10:	L90:	Leq:	L10:	L90:	Leq:	L10:	L90:	Leq:	L10:	L90:			Leq:
HKLR	HY/2011/03	2023-06-05	NMS5	13:30	<5	Leq:	57.7	Leq:	55.3	Leq:	54.2	Leq:	55.3	Leq:	59.4	Leq:	55.3	Leq:	60	dB(A)
						L10:	59.5	L10:	57.0	L10:	55.5	L10:	56.5	L10:	58.0	L10:	56.5	L10:	60	
						L90:	55.0	L90:	51.5	L90:	52.5	L90:	53.0	L90:	54.5	L90:	50.5	L90:	56	
HKLR	HY/2011/03	2023-06-15	NMS5	09:21	<5	Leq:	64.2	Leq:	63.6	Leq:	63.0	Leq:	62.9	Leq:	61.5	Leq:	62.0	Leq:	66	dB(A)
						L10:	66.5	L10:	66.0	L10:	65.0	L10:	65.0	L10:	64.0	L10:	64.0	L10:	68	
						L90:	61.0	L90:	58.5	L90:	60.0	L90:	59.5	L90:	57.5	L90:	58.5	L90:	62	
HKLR	HY/2011/03	2023-06-21	NMS5	10:30	<5	Leq:	64.9	Leq:	54.3	Leq:	55.0	Leq:	52.0	Leq:	52.5	Leq:	55.5	Leq:	62	dB(A)
						L10:	56.0	L10:	55.5	L10:	56.5	L10:	53.0	L10:	53.0	L10:	56.0	L10:	58	
						L90:	52.0	L90:	52.0	L90:	52.0	L90:	52.0	L90:	52.0	L90:	53.0	L90:	55	
HKLR	HY/2011/03	2023-06-27	NMS5	13:30	<5	Leq:	55.5	Leq:	55.5	Leq:	58.8	Leq:	56.8	Leq:	59.3	Leq:	57.1	Leq:	60	dB(A)
						L10:	57.0	L10:	56.5	L10:	60.0	L10:	57.5	L10:	59.5	L10:	58.5	L10:	61	
						L90:	52.5	L90:	53.0	L90:	57.5	L90:	55.0	L90:	58.5	L90:	53.5	L90:	59	

Remark:

(1)* A facade correction of +3 dB(A) was applied to the measured noise level.

Noise Monitoring Data

Project	Works	Date (yyyy-mm-dd)	Station	Start Time	Wind Speed, m/s	1st set 5mins		2nd set 5mins		3rd set 5mins		4th set 5mins		5th set 5mins		6th set 5mins		Overall (30mins)*	Unit
						Leq:	L10:	L90:	Leq:	L10:	L90:	Leq:	L10:	L90:	Leq:	L10:	L90:		
HKLR	HY/2011/03	2023-07-03	NMS5	11:30	<5	Leq:	54.0	Leq:	53.2	Leq:	53.8	Leq:	53.0	Leq:	53.7	Leq:	52.0	Leq:	56
						L10:	55.0	L10:	54.5	L10:	55.0	L10:	54.0	L10:	56.5	L10:	53.0	L10:	58
						L90:	49.5	L90:	49.5	L90:	49.5	L90:	48.5	L90:	48.0	L90:	48.0	L90:	52
HKLR	HY/2011/03	2023-07-13	NMS5	11:00	<5	Leq:	57.5	Leq:	55.0	Leq:	52.2	Leq:	52.5	Leq:	55.5	Leq:	57.0	Leq:	58
						L10:	59.5	L10:	57.5	L10:	55.5	L10:	53.5	L10:	56.5	L10:	59.5	L10:	60
						L90:	55.0	L90:	51.5	L90:	50.5	L90:	51.0	L90:	52.0	L90:	55.5	L90:	56
HKLR	HY/2011/03	2023-07-19	NMS5	09:30	<5	Leq:	53.4	Leq:	56.2	Leq:	56.7	Leq:	57.6	Leq:	54.6	Leq:	56.8	Leq:	59
						L10:	55.0	L10:	58.0	L10:	57.5	L10:	58.5	L10:	56.0	L10:	58.0	L10:	60
						L90:	52.5	L90:	54.5	L90:	55.0	L90:	55.5	L90:	53.5	L90:	55.5	L90:	58
HKLR	HY/2011/03	2023-07-25	NMS5	09:30	<5	Leq:	56.0	Leq:	54.2	Leq:	56.4	Leq:	56.4	Leq:	53.8	Leq:	52.3	Leq:	58
						L10:	58.5	L10:	56.0	L10:	57.5	L10:	58.0	L10:	56.0	L10:	55.5	L10:	60
						L90:	53.5	L90:	53.5	L90:	54.5	L90:	55.0	L90:	52.0	L90:	50.5	L90:	56
HKLR	HY/2011/03	2023-07-31	NMS5	10:00	<5	Leq:	58.0	Leq:	55.3	Leq:	55.1	Leq:	56.8	Leq:	61.3	Leq:	52.8	Leq:	60
						L10:	60.5	L10:	58.0	L10:	56.5	L10:	57.5	L10:	63.5	L10:	55.0	L10:	62
						L90:	52.0	L90:	52.0	L90:	52.5	L90:	55.3	L90:	57.0	L90:	50.0	L90:	57

Remark:

(1)* A facade correction of +3 dB(A) was applied to the measured noise level.

Noise Monitoring Data

Project	Works	Date (yyyy-mm-dd)	Station	Start Time	Wind Speed, m/s	1st set 5mins		2nd set 5mins		3rd set 5mins		4th set 5mins		5th set 5mins		6th set 5mins		Overall (30mins)*	Unit	
						Leq:	L10:	L90:	Leq:	L10:	L90:	Leq:	L10:	L90:	Leq:	L10:	L90:			Leq:
HKLR	HY/2011/03	2023-08-04	NMS5	11:00	<5	Leq:	52.0	Leq:	51.0	Leq:	50.3	Leq:	52.2	Leq:	52.9	Leq:	54.9	Leq:	55	dB(A)
						L10:	53.0	L10:	51.5	L10:	51.0	L10:	53.5	L10:	55.5	L10:	58.0	L10:	57	
						L90:	50.5	L90:	50.5	L90:	49.5	L90:	49.4	L90:	49.5	L90:	49.5	L90:	49.5	
HKLR	HY/2011/03	2023-08-10	NMS5	11:00	<5	Leq:	51.2	Leq:	54.9	Leq:	53.9	Leq:	51.0	Leq:	49.1	Leq:	49.6	Leq:	55	dB(A)
						L10:	51.0	L10:	57.5	L10:	55.5	L10:	53.0	L10:	50.5	L10:	50.5	L10:	57	
						L90:	47.5	L90:	49.5	L90:	52.0	L90:	47.0	L90:	46.5	L90:	46.5	L90:	52	
HKLR	HY/2011/03	2023-08-16	NMS5	11:00	<5	Leq:	50.9	Leq:	50.1	Leq:	59.1	Leq:	50.3	Leq:	50.5	Leq:	50.8	Leq:	57	dB(A)
						L10:	52.0	L10:	51.5	L10:	64.0	L10:	52.0	L10:	52.0	L10:	52.5	L10:	60	
						L90:	49.5	L90:	48.0	L90:	50.0	L90:	49.0	L90:	48.5	L90:	49.0	L90:	52	
HKLR	HY/2011/03	2023-08-22	NMS5	11:00	<5	Leq:	50.8	Leq:	51.1	Leq:	54.5	Leq:	50.1	Leq:	51.0	Leq:	51.6	Leq:	55	dB(A)
						L10:	52.5	L10:	52.5	L10:	56.5	L10:	51.0	L10:	52.5	L10:	53.5	L10:	56	
						L90:	48.5	L90:	48.0	L90:	50.0	L90:	49.0	L90:	49.0	L90:	49.5	L90:	52	
HKLR	HY/2011/03	2023-08-28	NMS5	11:00	<5	Leq:	56.8	Leq:	58.4	Leq:	57.0	Leq:	52.3	Leq:	51.2	Leq:	49.8	Leq:	58	dB(A)
						L10:	59.0	L10:	60.0	L10:	59.0	L10:	53.5	L10:	52.5	L10:	51.0	L10:	60	
						L90:	50.0	L90:	56.0	L90:	53.5	L90:	49.5	L90:	49.0	L90:	48.0	L90:	55	

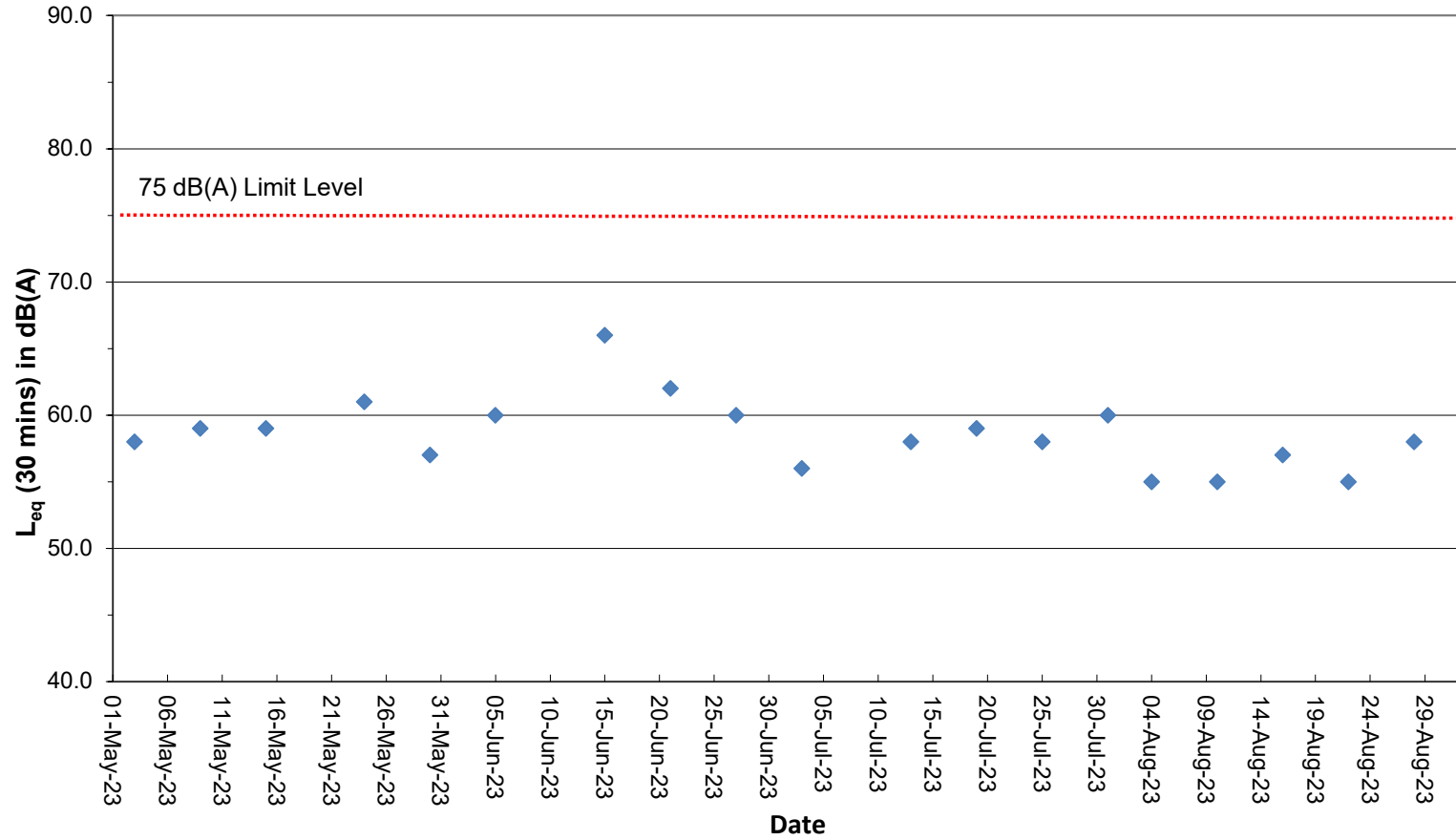
Remark:

(1)* A facade correction of +3 dB(A) was applied to the measured noise level.

Noise Monitoring Data

Graphical Plot of Noise Levels at NMS5

Continuous Noise Monitoring Data (NMS5)



Remarks:

(1) A facade correction of +3 dB(A) was applied to the measured noise level.