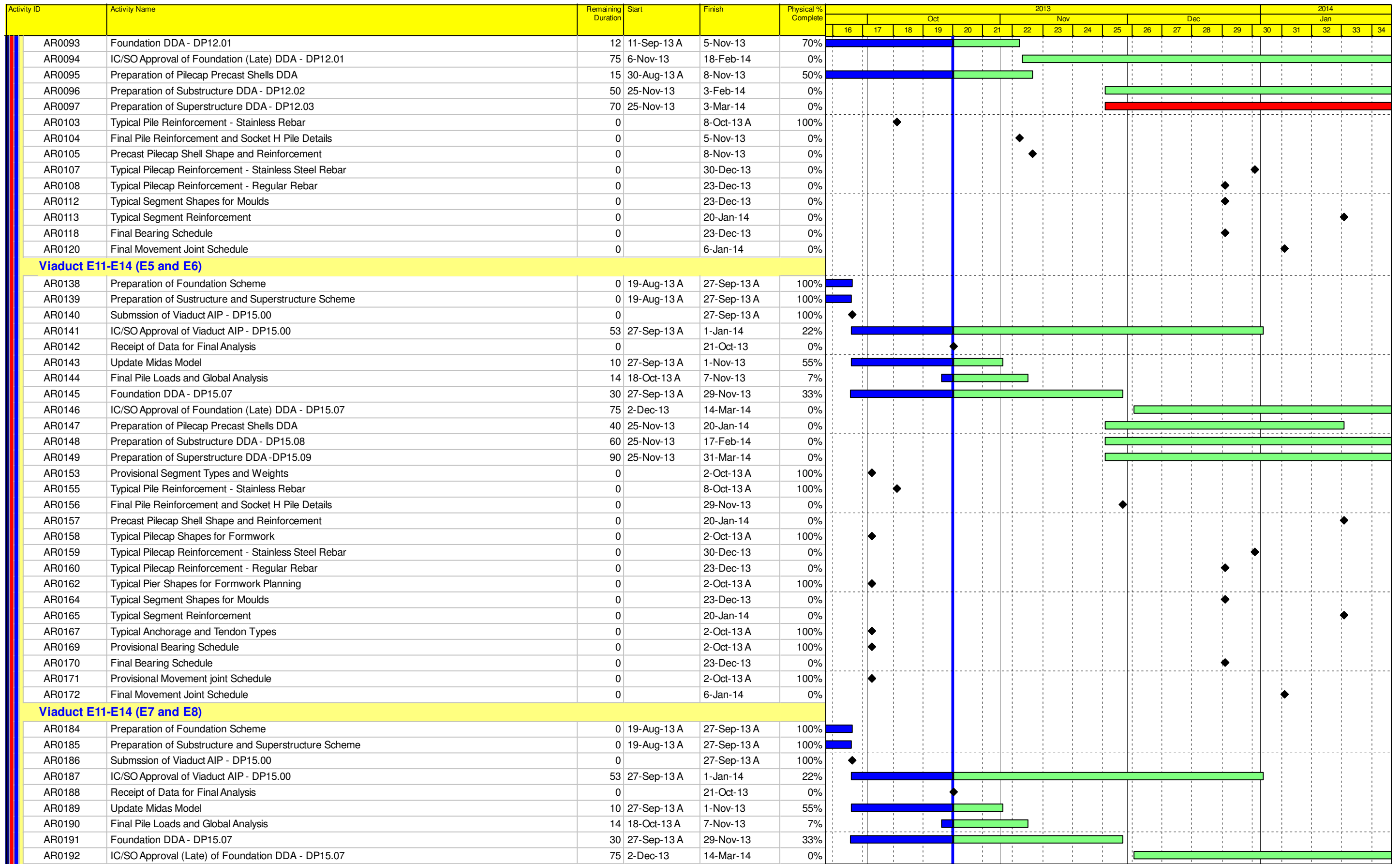






Date	Revision	Checked	Approved
28-Jun-13	3M-Rolling Program...	RT	
21-Aug-13	3M-Rolling Progr Up...	RT	
21-Sep-13	3M-Rolling Progr Up...	RT	
21-Oct-13	3M-Rolling Progr Up...	RT	

**8Tuen Mun - Chek Lap Kok Southern Connection**  
**3-Months Rolling Programme (Page 1 of 8 Pages)**  
**(21-Oct-13 to 20-Jan-14)**



DWG. No.:  
**J3518/GCL/PGM/3MRP-M05**



	Actual Work		
	Planned Bar		
	Critical Bar		
	Milestone		
<b>Date</b>	<b>Revision</b>	<b>Checked</b>	<b>Approved</b>
28-Jun-13	3M-Rolling Program...	RT	
21-Aug-13	3M-Rolling Progr Up...	RT	
21-Sep-13	3M-Rolling Progr Up...	RT	
21-Oct-13	3M-Rolling Progr Up...	RT	

**8Tuen Mun - Chek Lap Kok Southern Connection**  
**3-Months Rolling Programme (Page 2 of 8 Pages)**  
**(21-Oct-13 to 20-Jan-14)**

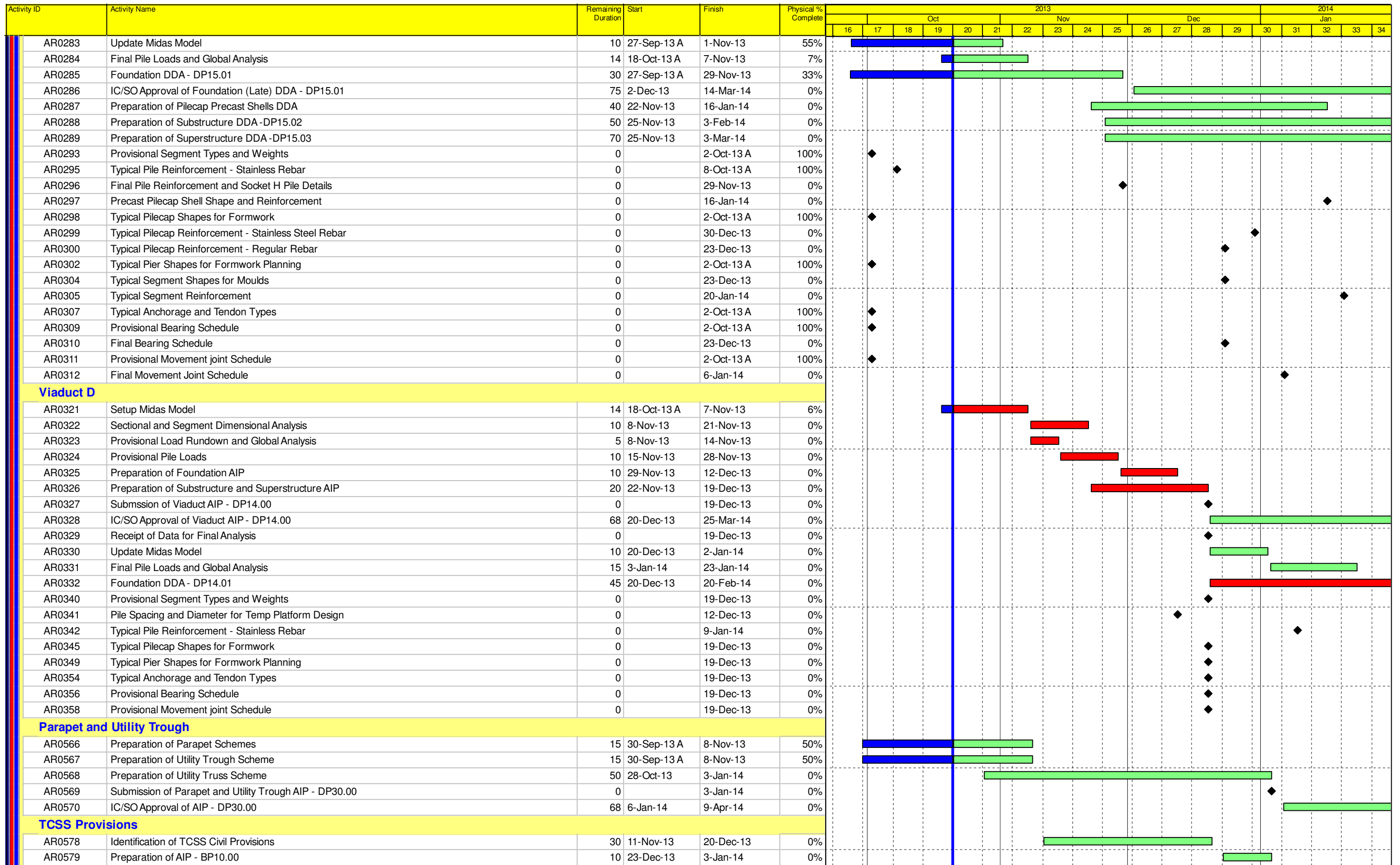






**DWG. No.:**  
**J3518/GCL/PGM/3MRP-M05**

Activity ID	Activity Name	Remaining Duration	Start	Finish	Physical % Complete	2013												2014										
						Oct					Nov					Dec		Jan										
						16	17	18	19	20	21	22	23	24	25	26	27	28	29	30	31	32	33	34				
AR0193	Preparation of Pilecap Precast Shells DDA	40	25-Nov-13	20-Jan-14	0%																							
AR0194	Preparation of Substructure DDA - 15.08	60	25-Nov-13	17-Feb-14	0%																							
AR0195	Preparation of Superstructure DDA - DP15.09	90	25-Nov-13	31-Mar-14	0%																							
AR0199	Provisional Segment Types and Weights	0		2-Oct-13 A	100%																							
AR0201	Typical Pile Reinforcement - Stainless Rebar	0		8-Oct-13 A	100%																							
AR0202	Final Pile Reinforcement and Socket H Pile Details	0		29-Nov-13	0%																							
AR0203	Precast Pilecap Shell Shape and Reinforcement	0		20-Jan-14	0%																							
AR0204	Typical Pilecap Shapes for Formwork	0		2-Oct-13 A	100%																							
AR0205	Typical Pilecap Reinforcement - Stainless Steel Rebar	0		30-Dec-13	0%																							
AR0206	Typical Pilecap Reinforcement - Regular Rebar	0		23-Dec-13	0%																							
AR0208	Typical Pier Shapes for Formwork Planning	0		2-Oct-13 A	100%																							
AR0210	Typical Segment Shapes for Moulds	0		23-Dec-13	0%																							
AR0211	Typical Segment Reinforcement	0		20-Jan-14	0%																							
AR0213	Typical Anchorage and Tendon Types	0		2-Oct-13 A	100%																							
AR0215	Provisional Bearing Schedule	0		2-Oct-13 A	100%																							
AR0216	Final Bearing Schedule	0		23-Dec-13	0%																							
AR0217	Provisional Movement joint Schedule	0		2-Oct-13 A	100%																							
AR0218	Final Movement Joint Schedule	0		6-Jan-14	0%																							
<b>Viaduct E2</b>																												
AR0231	Preparation of Foundation Scheme	0	19-Aug-13 A	27-Sep-13 A	100%																							
AR0232	Preparation of Sustructure and Superstructure Scheme	0	19-Aug-13 A	27-Sep-13 A	100%																							
AR0233	Submission of Viaduct AIP - DP15.00	0		27-Sep-13 A	100%																							
AR0234	IC/SO Approval of Viaduct AIP - DP15.00	53	27-Sep-13 A	1-Jan-14	22%																							
AR0235	Receipt of Data for Final Analysis	0		21-Oct-13	0%																							
AR0236	Update Midas Model	10	27-Sep-13 A	1-Nov-13	55%																							
AR0237	Final Pile Loads and Global Analysis	14	18-Oct-13 A	7-Nov-13	7%																							
AR0238	Foundation DDA - DP15.04	30	27-Sep-13 A	29-Nov-13	33%																							
AR0239	IC/SO Approval of Foundation (Late) DDA - DP15.04	75	2-Dec-13	14-Mar-14	0%																							
AR0240	Preparation of Pilecap Precast Shells DDA	40	25-Nov-13	20-Jan-14	0%																							
AR0241	Preparation of Substructure DDA - DP15.05	60	25-Nov-13	17-Feb-14	0%																							
AR0242	Preparation of Superstructure DDA - DP15.06	90	25-Nov-13	31-Mar-14	0%																							
AR0246	Provisional Segment Types and Weights	0		2-Oct-13 A	100%																							
AR0248	Typical Pile Reinforcement - Stainless Rebar	0		8-Oct-13 A	100%																							
AR0249	Final Pile Reinforcement and Socket H Pile Details	0		29-Nov-13	0%																							
AR0250	Precast Pilecap Shell Shape and Reinforcement	0		20-Jan-14	0%																							
AR0251	Typical Pilecap Shapes for Formwork	0		2-Oct-13 A	100%																							
AR0252	Typical Pilecap Reinforcement - Stainless Steel Rebar	0		30-Dec-13	0%																							
AR0253	Typical Pilecap Reinforcement - Regular Rebar	0		23-Dec-13	0%																							
AR0255	Typical Pier Shapes for Formwork Planning	0		2-Oct-13 A	100%																							
AR0257	Typical Segment Shapes for Moulds	0		23-Dec-13	0%																							
AR0258	Typical Segment Reinforcement	0		20-Jan-14	0%																							
AR0260	Typical Anchorage and Tendon Types	0		2-Oct-13 A	100%																							
AR0262	Provisional Bearing Schedule	0		2-Oct-13 A	100%																							
AR0263	Final Bearing Schedule	0		9-Dec-13	0%																							
AR0264	Provisional Movement joint Schedule	0		2-Oct-13 A	100%																							
AR0265	Final Movement Joint Schedule	0		6-Jan-14	0%																							
<b>Viaduct E1</b>																												
AR0278	Preparation of Foundation Scheme	0	19-Aug-13 A	27-Sep-13 A	100%																							
AR0279	Preparation of Sustructure and Superstructure Scheme	0	19-Aug-13 A	27-Sep-13 A	100%																							
AR0280	Submssion of Viaduct AIP - DP15.00 Update	0		27-Sep-13 A	100%																							
AR0281	IC/SO Approval of Viaduct AIP - DP15.00	53	27-Sep-13 A	1-Jan-14	22%																							
AR0282	Receipt of Data for Final Analysis	0		21-Oct-13	0%																							

- Actual Work
- Planned Bar
- Critical Bar
- Milestone

Date	Revision	Checked	Approved
28-Jun-13	3M-Rolling Program...	RT	
21-Aug-13	3M-Rolling Progr Up...	RT	
21-Sep-13	3M-Rolling Progr Up...	RT	
21-Oct-13	3M-Rolling Progr Up...	RT	

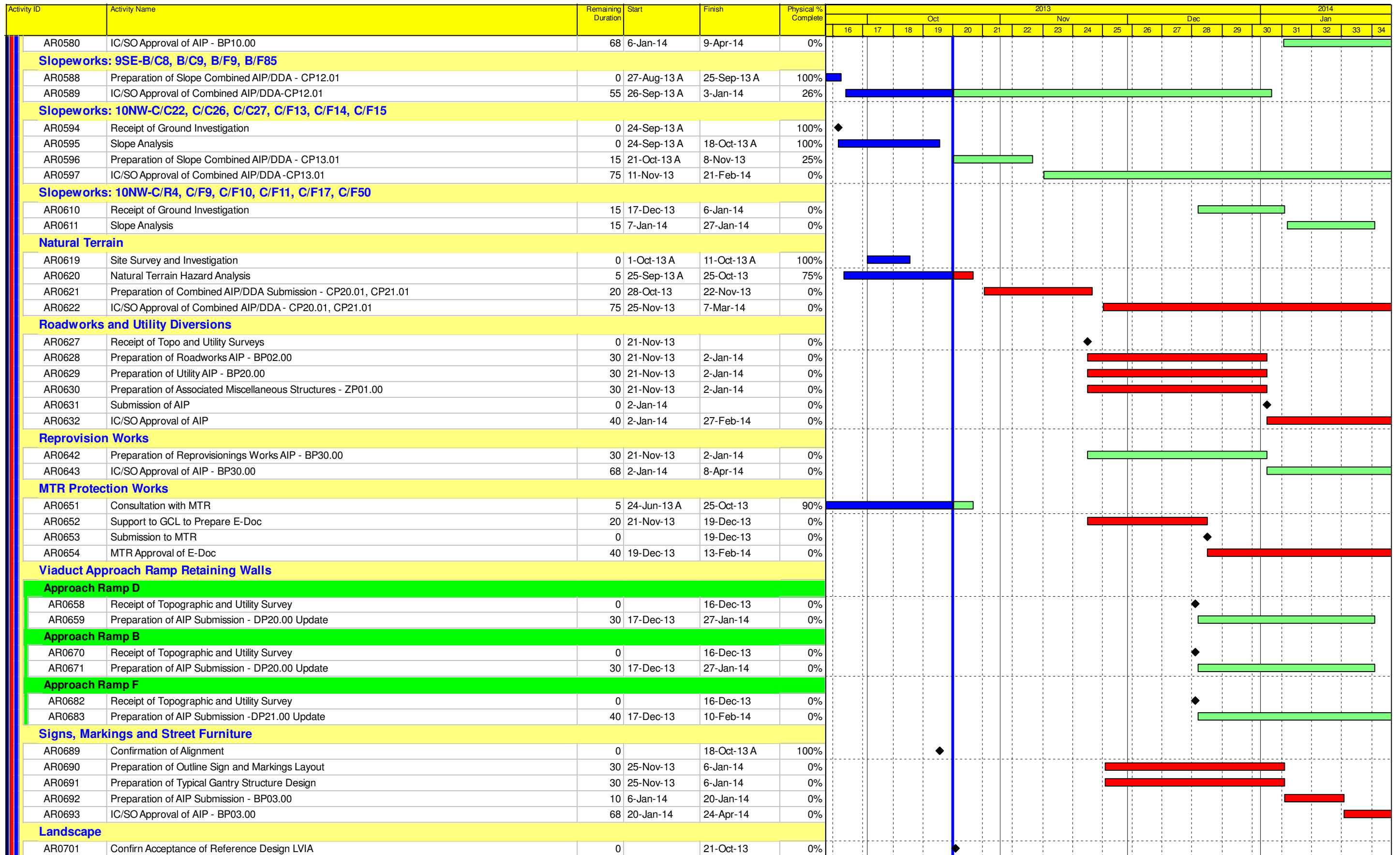






	Actual Work		
	Planned Bar		
	Critical Bar		
	Milestone		
Date	Revision	Checked	Approved
28-Jun-13	3M-Rolling Program...	RT	
21-Aug-13	3M-Rolling Progr Up...	RT	
21-Sep-13	3M-Rolling Progr Up...	RT	
21-Oct-13	3M-Rolling Progr Up...	RT	

**8Tuen Mun - Chek Lap Kok Southern Connection**  
**3-Months Rolling Programme (Page 4 of 8 Pages)**  
**(21-Oct-13 to 20-Jan-14)**



DWG. No.:  
**J3518/GCL/PGM/3MRP-M05**

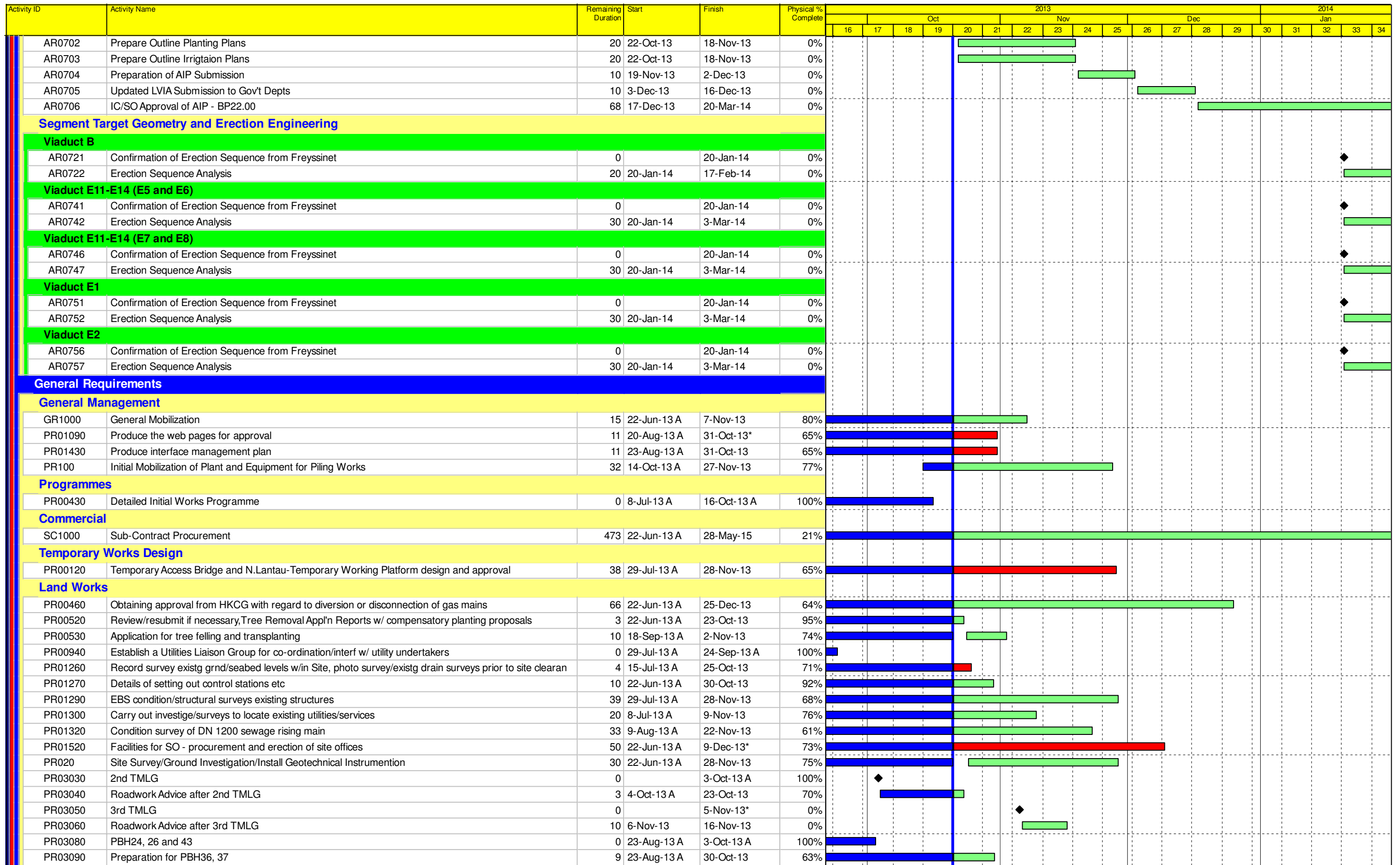


	Actual Work	Date	Revision	Checked	Approved
	Planned Bar	28-Jun-13	3M-Rolling Program...	RT	
	Critical Bar	21-Aug-13	3M-Rolling Progr Up...	RT	
	Milestone	21-Sep-13	3M-Rolling Progr Up...	RT	
		21-Oct-13	3M-Rolling Progr Up...	RT	

**8Tuen Mun - Chek Lap Kok Southern Connection**  
**3-Months Rolling Programme (Page 5 of 8 Pages)**  
**(21-Oct-13 to 20-Jan-14)**



DWG. No.:  
**J3518/GCL/PGM/3MRP-M05**

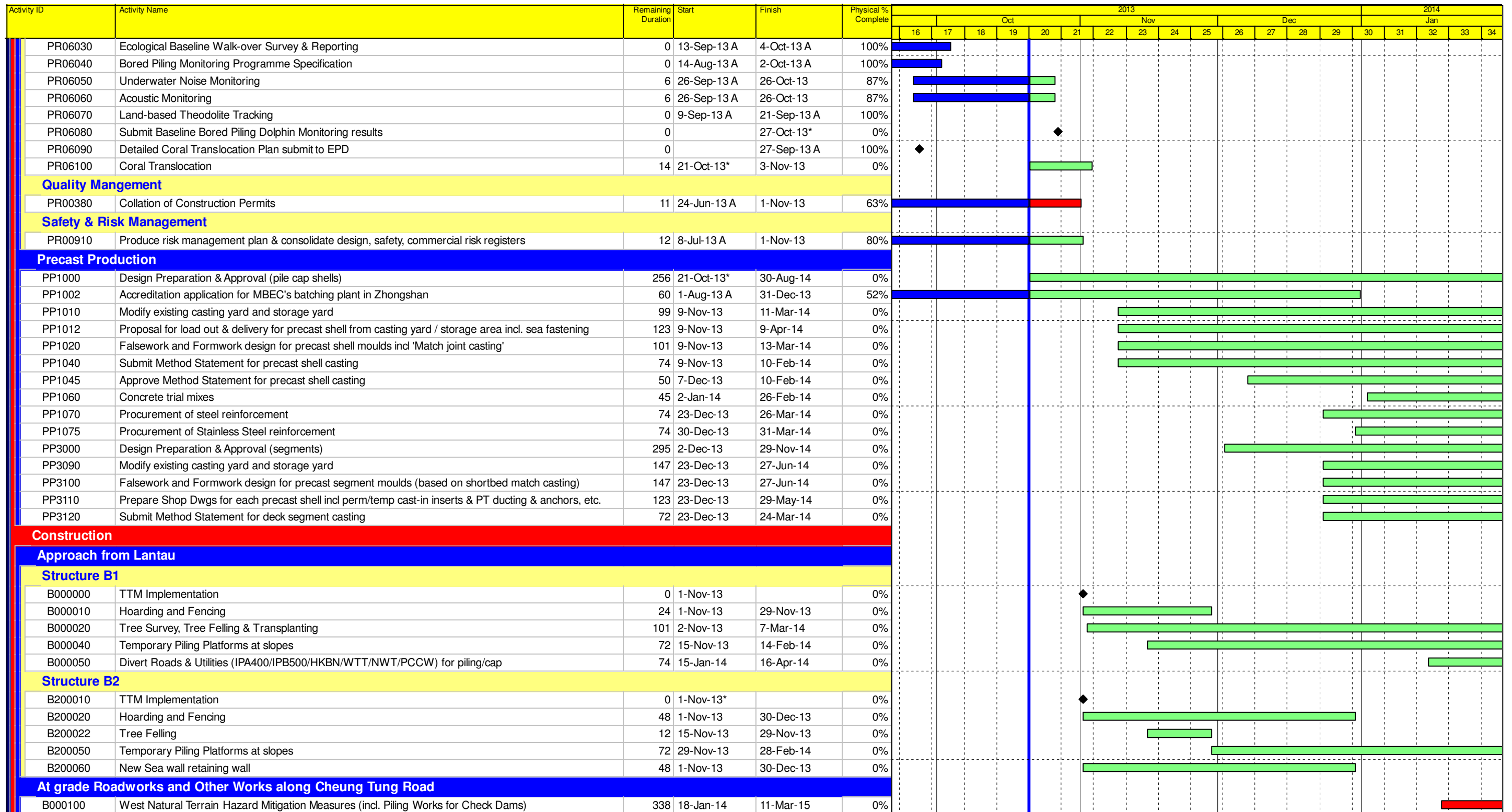


Date	Revision	Checked	Approved
28-Jun-13	3M-Rolling Program...	RT	
21-Aug-13	3M-Rolling Progr Up...	RT	
21-Sep-13	3M-Rolling Progr Up...	RT	
21-Oct-13	3M-Rolling Progr Up...	RT	

**8Tuen Mun - Chek Lap Kok Southern Connection**  
**3-Months Rolling Programme (Page 6 of 8 Pages)**  
**(21-Oct-13 to 20-Jan-14)**

**DWG. No.:**  
**J3518/GCL/PGM/3MRP-M05**





	Actual Work
	Planned Bar
	Critical Bar
	Milestone

Date	Revision	Checked	Approved
28-Jun-13	3M-Rolling Program...	RT	
21-Aug-13	3M-Rolling Progr Up...	RT	
21-Sep-13	3M-Rolling Progr Up...	RT	
21-Oct-13	3M-Rolling Progr Up...	RT	

**8Tuen Mun - Chek Lap Kok Southern Connection**  
**3-Months Rolling Programme (Page 8 of 8 Pages)**  
**(21-Oct-13 to 20-Jan-14)**



**DWG. No.:**  
**J3518/GCL/PGM/3MRP-M05**