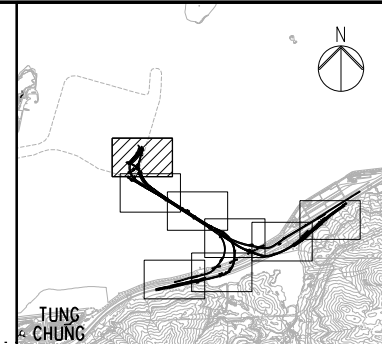


DO NOT SCALE DRAWING. CHECK ALL DIMENSIONS ON SITE.

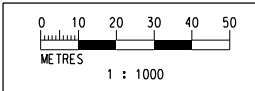


**KEY PLAN**

**NOTES**  
 1. THIS DRAWING SHALL BE READ IN CONJUNCTION WITH DRAWING NO. J3518/P/OAP/04/1000 AND OTHER RELEVANT DRAWINGS.

- LEGEND**
- SITE BOUNDARY
  - GF1 FAULT
  - EXISTING G.I. STATIONS :
  - ⊕ BOREHOLE BY GIU DATA EXCLUDING VC
  - ⊕ BOREHOLE BY GCL CONTRACT HY/2012/04
  - ⊕ BOREHOLE BY GCL CONTRACT NL8/97
  - ⊕ BOREHOLE BY GCL CONTRACT HY/2009/23
  - ⊕ TRIAL PIT BY GCL CONTRACT HY/2012/04
  - SLOPE STRIPPING BY GCL CONTRACT HY/2012/04
  - PROPOSED G.I. STATIONS :
  - ⊕ PBH01 PROPOSED BOREHOLE
  - ⊕ TP01 PROPOSED TRIAL PIT
  - ⊕ CH01 PROPOSED COREHOLE
  - SS01 SS02 PROPOSED SLOPE STRIPPING

MATCH LINE  
 FOR CONTINUATION  
 SEE DRG J3518/P/OAP/04/01101



Printed by : 12/9/2013  
 File name : J:\231499\RECORD\20130912\Ground Investigation Plan\CAOV231499\_P\_OAP\_04\_01100.dgn

Rev	Description	By	Date	Rev	Description	By	Date	Drawn	Date	Client
A	SUBMISSION	RC	07/13					RL	07/13	路政署 <b>HIGHWAYS DEPARTMENT</b> 港珠澳大橋香港工程管理局 Hong Kong - Zhuhai - Macao Bridge Hong Kong Project Management Office
B	SUBMISSION	RC	07/13					Checked	Approved	
C	SUBMISSION	RC	09/13					DS	DOP	
								Scale	1:1000 @ A1 / 1:2000 @ A3	Supervising Officer
										Contractor
										Originator

Client

Project Title  
**Contract No. HY/2012/07**  
**Tuen Mun - Chek Lap Kok Link**  
**Southern Connection Viaduct Section**

Drawing title  
**PROPOSED GROUND INVESTIGATION PLAN**  
**(SHEET 1 OF 8)**  
**Fig 1.4**  
 Drawing no. **J3518/P/OAP/04/01100** Rev. **C**